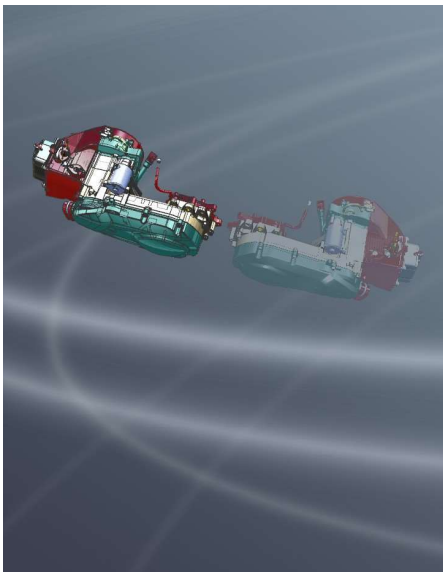


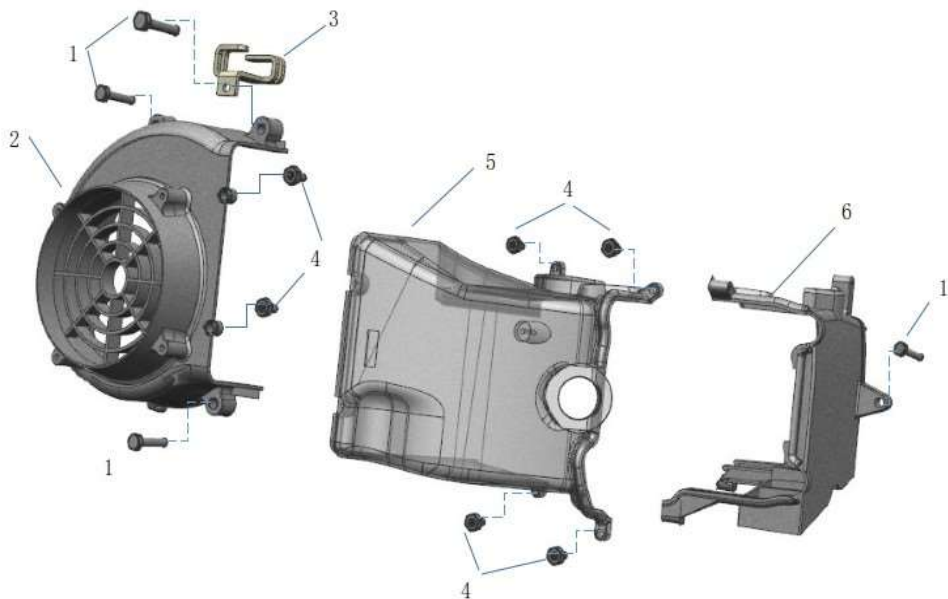
RA125-

RA125-I EFI



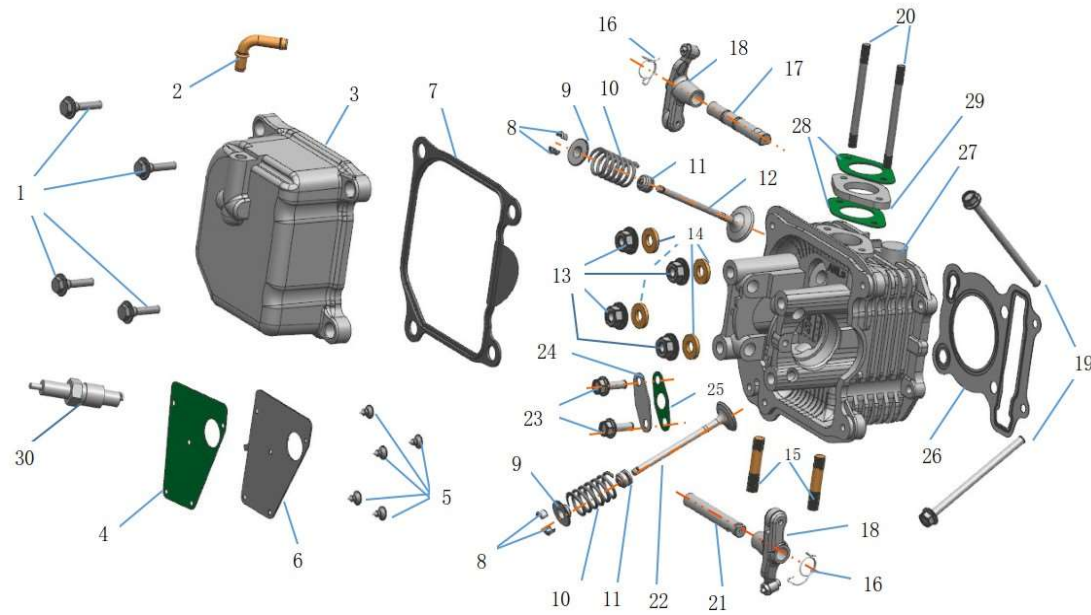
ADAMOTO FLASH 125

E01 SHROUD ASSY (风扇罩总成)



序号 No.	件号 Part No.	英文名称 Description	数量 Qty	备注 Remark
1	8.700-5787-M6×25-CZ	SH. FLANGE BOLT M6×25	4	9103-M6*25-A
2	8.RA-08-002	FAN COVER COMP.	1	3J3-21005-0000
3	8.RA-08-016	MAGNETIC MOTOR OUTLET WIRE CLIP	1	
4	8.700-845-M4.8×16-B	TAPPING SCREW ST4.8×16	6	9168-ST4.8*15-H
5	8.RA-08-003	SHROUD A ASSY.	1	
6	8.RA-08-004	SHROUD B ASSY.	1	

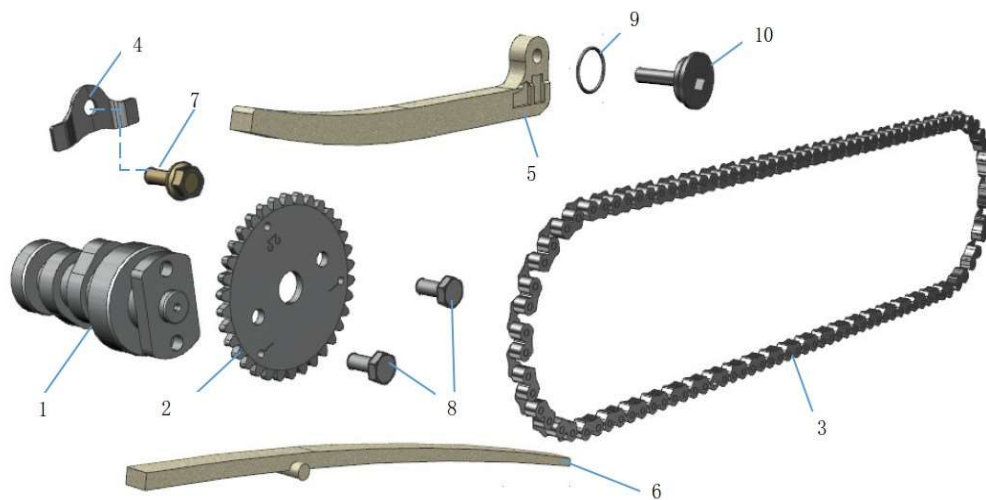
E02 CYLINDER HEAD (缸头总成)



序号 No.	件号 Part No.	英文名称 Description	数量 Qty	备注 Remark
1	8. RA-07-M6×28-CZ	SH.FLANGE BOLT M6X28	4	
2	8. RA-07-008	JOINT	1	
3	8. RA-01-009	CYLINDER HEAD COVER COMP.	1	
4	8. RA-10-011-I	CYOLINDER HEAD PARTITION	1	
5	8. 700-845-M4×8-B	TAPPING SCREW ST4.8×16	5	
6	8. RA-07-009	CYOLINDER HEAD PARTITION	1	
7	8. RA-08-006	HEAD COVER PACKING	1	
8	8. RA-01-008	VALVE COTTER	4	3J3-03006-0000
9	8. RA-01-007	RETAINER VALVE SPRING	2	
10	8. RA-09-001	VALVE SPG.	2	3J3-03004-0000
11	8. RA-08-4.3×7.7×8.4	VALVE STEM SEAL4.3×7.7×8.4	2	3J3-03003-0000
12	8. RA-01-005	IN.VAIVE	1	
13	8. 700-6187-M8-CZ	NUT FLANGE M8	4	9202-M8-C
14	8. RA-07-φ8.5×φ18×2.5	COPPER PLATING	4	

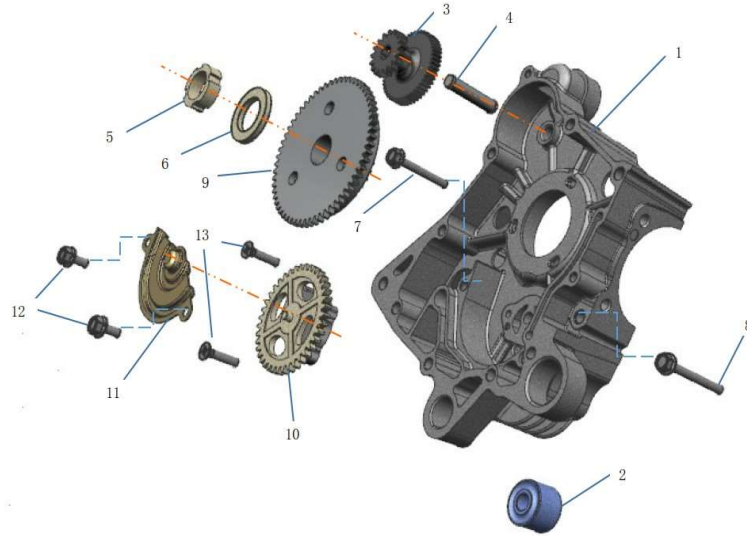
15	8. RA-07-M8×40-WZ	SPECIAL STUD BOLT M8X40	2	7B1-02005-000A
16	8. RA-09-002	RETAINER VALVE SPRING	2	
17	8. RA-01-003	IN.ROCKER ARM SHAFT	1	
18	8. RA-01-002	VALVE ROCKER ARM ASSY.	2	
19	8. 700-5789-M6×95-CZ	SH.FLANGE BOLT M6X95	2	9103-M6*95-A
20	8. RA-07-M6×63-WZ	STUD BOLT M6×63	2	
21	8. RA-01-004	EX.ROCKER ARM SHAFT	1	
22	8. RA-01-006	EX.VALVE	1	
23	8. 700-5789-M6×18-CZ	FLANGE BOLT M6×18	2	
24	8. RA-07-012	AIR PIPE COMP.	1	
25	8. RA-10-005	A/I PIPE GASKET B	1	
26	8. RA-10-009	CYLINDER HEAD GASKET	1	3J3-02005-0000
27	8. RA-01-001-I	CYLINDER HEAD COMP	1	
28	8. RA-10-010-I	CARB.INSULATOR GASKET	2	
29	8. RA-08-007	CARB.INSULATOR	1	
30	8. RA-01-CR7HSA	PLUG.SPARK(NGK CR7HSA)	1	3J3-02004-0000

E03 CAM SHAFT & CYL. HEAD L. SIDE COVER (正时机构)



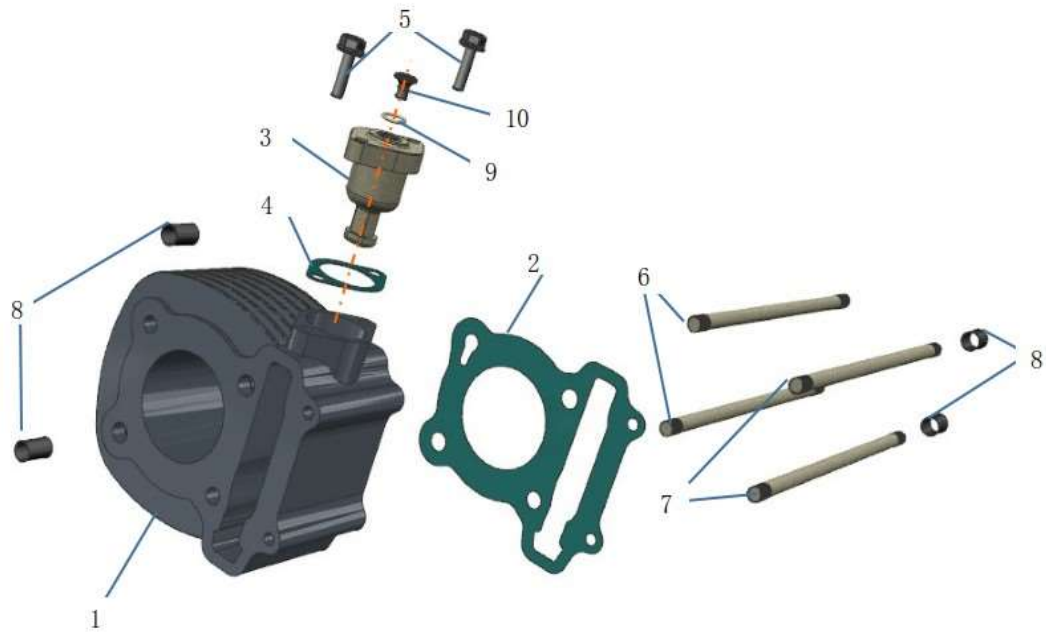
序号 No.	件号 Part No.	英文名称 Description	数量 Qty	备注 Remark
1	8. RA-01-010	CAM SHAFT COMP.	1	
2	8. RA-01-011	CAM SPROCKET	1	3J3-04005-0000
3	8. RA-01-012	CAM CHAIN	1	
4	8. RA-07-002	CAM SHAFT SETTING PLATE	1	
5	8. RA-08-008	CAM CHAIN TENSIONER	1	3J3-04001-0000
6	8. RA-08-009	CAM CHAIN GUIDE	1	3J3-04003-0000
7	8. 700-5789-M6×12-CZ	SH.FLANGE BOLT M6X12	1	9103-M6*16-C
8	8. 700-5783-M6×10-B	KNOCK BOLT	2	3J3-04007-0000
9	8. RA-08-15.5×1.5	O-RING 15.5X1.5	1	
10	8. RA-07-M6×21-CZ	CAM CHAIN TENSIONER PIVOT	1	

E04 R CRANK CASE & OIL PUMP ASSY (右箱总成)



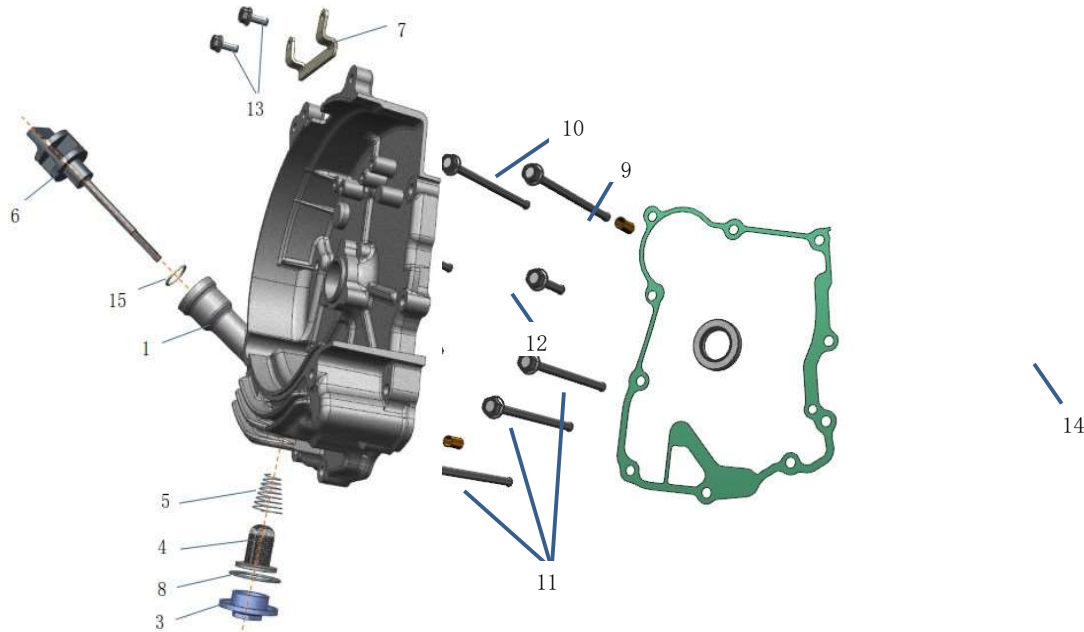
序号 No.	件号 Part No.	英文名称 Description	数量 Qty	备注 Remark
1	8. RA-03-001	R.CRANK CASE COMP.	1	3J3-11002-0000
2	8. RA-08-010	ENG.HANGER RUBBER BUSH	1	
3	8. RA-06-001	STARTER REDUCTION GEAR	1	3J3-18001-0000
4	8. RA-06-002	START.RED.GEAR SHAFT	1	3J3-18002-0000
5	8. 700-M22×1-CZ	LOCK NUT M22	1	9209-M22*1-LH-C
6	8. 700-96-φ22×φ31×2-B	THRUST WASHER Ø22XØ31X2	1	9301-22*31*2-H
7	8. 700-5789-M6×45-Cr	FLANGE BOLT M6X45	1	9103-M6*45-A
8	8. 700-5789-M6×55-Cr	FLANGE BOLT M6X55	1	9103-M6*55-A
9	8. RA-06-003	STARTING CLUTCH FLANGE COMP.	1	3J3-18200-0000
10	8. RA-03-003	OIL PUMP SEPARATOR	1	3J3-08100-0000
11	8. RA-07-003	OIL PUMP COVER	1	3J3-08001-0000
12	8. 700-5787-M6×12-AG	FLANGE BOLT M6X12	2	9103-M6*12-C
13	8. 700-819-M6×25-WZ	HEAVY HEAD SCREW M6×25	2	9143-M6*25-C

E05	CYLINDER (中缸总成)	
-----	-----------------	--



序号 No.	件号 Part No.	英文名称 Description	数量 Qty	备注 Remark
1	8. RA-02-001-125	CYLINDER	1	3J3-05001-0000
2	8. RA-10-004-I	CYLINDER GASKET	1	3J3-05002-0000
3	8. RA-02-002	TENSIONER LIFTER ASSY.	1	3J3-04100-0000
4	8. RA-10-001-I	TENSIONER LIFTER GASKET	1	3J3-04006-0000
5	8. 700-5787-M6×22-CZ	SH.FLANGE BOLT M6X22	2	9103-M6*22-A
6	8. RA-07-M8×207-CZ	CYLINDER STUD BOLT A	2	
7	8. RA-07-M8×213-CZ	CYLINDER STUD BOLT B	2	
8	8. RA-07-10×14	DOWEL PIN 10X14	4	9402-10*14
9	8. RA-08-9.5×1.8	O-RING	1	
10	8. 700-818-M6×10-CZ	PAN SCREW M6×10	1	

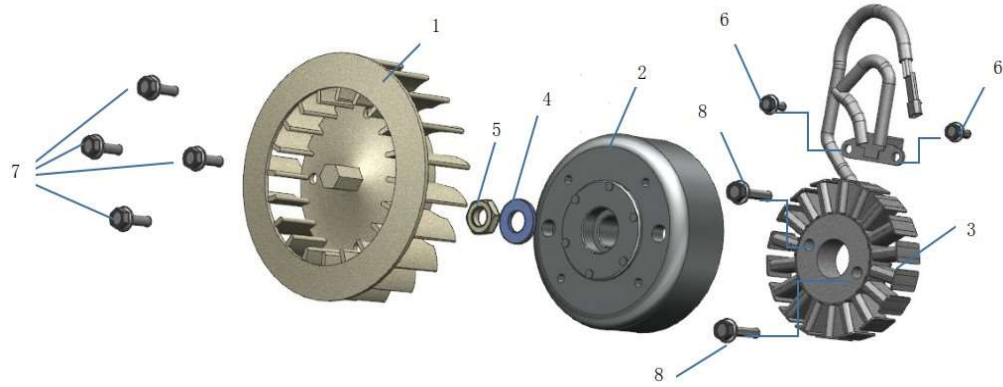
E06 R. CRANK CASE COVER (右盖总成)



序号 No.	件号 Part No.	英文名称 Description	数量 Qty	备注 Remark
1	8. RA-04-001	R.CRANK CASE COVER	1	3J3-12001-0000
2	8. RA-10-008-I	R.COVER GASKET	1	3J3-12002-0000
3	8. RA-04-002	TAPPET ADJUSTING HOLE CAP	1	3J3-12005-0000
4	8. RA-08-012	OIL FILTER SCREEN	1	3J3-12020-0000
5	8. RA-09-003	OIL FILTER SCREEN SPG.	1	3J3-12004-0000
6	8. RA-08-013	OIL LEVEL GAUGE	1	3J3-12006-0000
7	8. RA-07-004	ACG CORD CLAMPER	1	3J3-19002-000C
8	8. RA-08-30×3.2	O-RING 30mm	1	9601-29. 8*3. 1-NB
9	8. RA-07-8×14	DOWEL PIN 8X14	2	9402-8*14
10	8. 700-5789-M6×100-CZ	SH FLANGE BOLT M6X100	2	9103-M6*100-A
11	8. 700-5789-M6×95-CZ	SH FLANGE BOLT M6X95	6	9103-M6*95-A
12	8. 700-5789-M6×28-CZ	SH FLANGE BOLT M6X28	2	9103-M6*30-A
13	8. 700-5783-M5×12-CZ	HEX BOLT M5X12	2	9101-M5*12-A
14	8. RA-08-19.8×30×5	OIL SEAL 19.8×30×5	1	
15	8. RA-08-18×3.3	O-RING 18X3.2	1	



E07 AC GEN. ASSY (风扇总成)



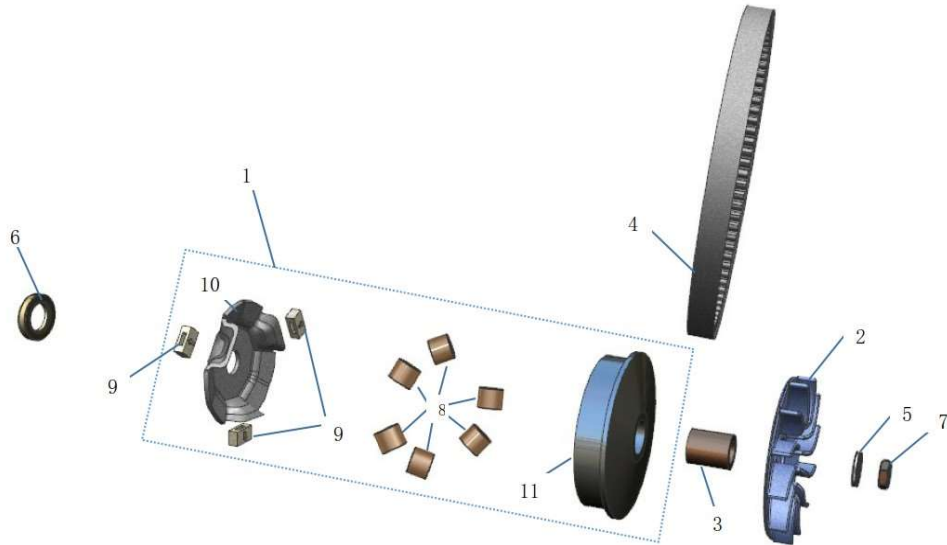
序号 No.	件号 Part No.	英文名称 Description	数量 Qty	备注 Remark
1	8. RA-08-001	COOLING FAN COMP.	1	
2	8. RA-06-004-I	FLYWHEEL COMP	1	full wave
3	8. RA-06-005-I	STATOR COMP.	1	full wave
4	8. 700-97-φ12.5×φ25×2.5-CZ	PLAIN WASHER 12mm	1	9301-12*25*2.5-B
5	8. 700-6177-M12×1.25-11-CZ	FLANGE NUT M12	1	9203-M12*1.25-C, S=17, H=11
6	8. 700-5783-M5×12-CZ	HEX BOLT M5X12	2	9101-M5*12-C
7	8. 700-5787-M6×18-CZ	FLANGE BOLT M6X18	4	9103-M6*18-C
8	8. 700-5787-M6×28-CZ	SH.FLANGE BOLT M6X25	2	

E08 L. CRANK CASE COVER (左盖总成)



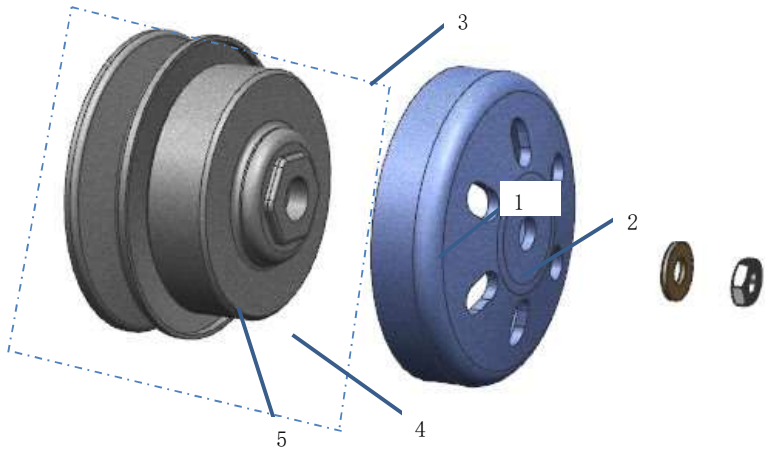
序号 No.	件号 Part No.	英文名称 Description	数量 Qty	备注 Remark
1	8. RA-04-003	L.CRANK CASE COVER	1	Paint, Lettering
2	8. RA-10-006-I	L.SIDE COVER PLATE GASKET	1	3J3-09005-0000
3	8. RA-07-005	L.SIDE COVER PLATE	1	3J3-09002-0000
4	8. RA-10-007-I	L.COVER GASKET	1	3J3-09002-0000
5	8. 700-818-M5×12-CZ	PAN SCREW M5X12	7	9142-M5*12-C
6	8. 700-5787-M6×28-WZ	SH FLANGE BOLT M6X28	6	9103-M6*28-A
7	8. 700-5789-M6×22-WZ	SH FLANGE BOLT M6X22	2	
8	8. RA-08-014	HOSE CLAMP ASSY.	1	3J3-09008-0000
9	8. RA-08-015	AIR CLEANER.COVER L	1	3J3-09007-0000
10	8. RA-07-011-I	STARTING SHAFT PLUG(EFI)	1	

E09 MOVABLE DRIVE FACE ASSY(主动轮总成)



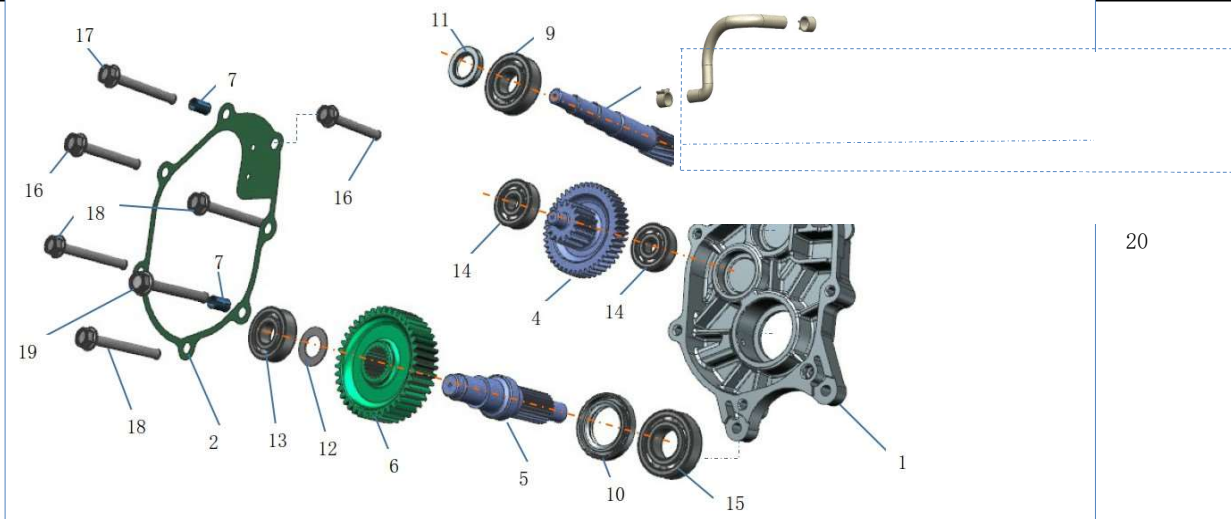
序号 No.	件号 Part No.	英文名称 Description	数量 Qty	备注 Remark
1	8. RA-05-001	MOVABLE DRIVE FACE ASSY	1	3J3-13100-0000
2	8. RA-05-002	DRIVE FACE COMP.	1	3J3-1300F-0000
3	8. RA-05-003-125	DRIVE FACE BOSS	1	3J3-1300E-000E
4	8. RA-05-008	DRIVE BELT	1	3J3-13001-0000
5	8. 700-97- φ 12.5 × φ 25 × 2.5-	PLAIN WASHER 12mm	1	9301-12*25*2.5-B
6	8. RA-08-L 25 × 40 × 7	OIL SEAL Ø25XØ40X7	1	9602-FB25*40*8-VI
7	8. 700-6177-	FLANGE NUT M12×1.25	1	9203-M12*1.25-C, S=17, H=11
8	8. RA-05-001-01S	WEIGHT ROLLER COMP.	6	3J3-1300C-0000
9	8. RA-05-001-02S	SLIDE PIECE	3	3J3-1300H-0000
10	8. RA-05-001-03S	RMAP PLATE	1	3J3-1300B-000F
11	8. RA-05-001-04S	MOVABLE DRIVE FACE COMP.	1	3J3-1300D-0000

E10 DRIVEN PULLEY ASSY (驱动轮总成)



序号 No.	件号 Part No.	英文名称 Description	数量 Qty	备注 Remark
1	8.700-97- φ12.5×φ25×2.5- CZ	PLAIN WASHER 12mm	1	9301-12*25*2.5-B
2	8.700-6177- M12×1.25-11-CZ	PLANG NUT M12×1.25	1	9203-M12*1.25-C, S=17, H=11
3	8.RA-05-011-125	DRIVEN PULLEY SET	1	3J3-13400-0000
4	8.RA-05-011-125-01S	CLUTCH DRUM	1	3J3-13003-0000
5	8.RA-05-011-125-02S	<b>CLUTCH CENTRIFUGAL BLOCK</b>	1	3J3-13010-0000

E11 MISSION CASE & DRIVE SHAFT (齿轮室盖总成)

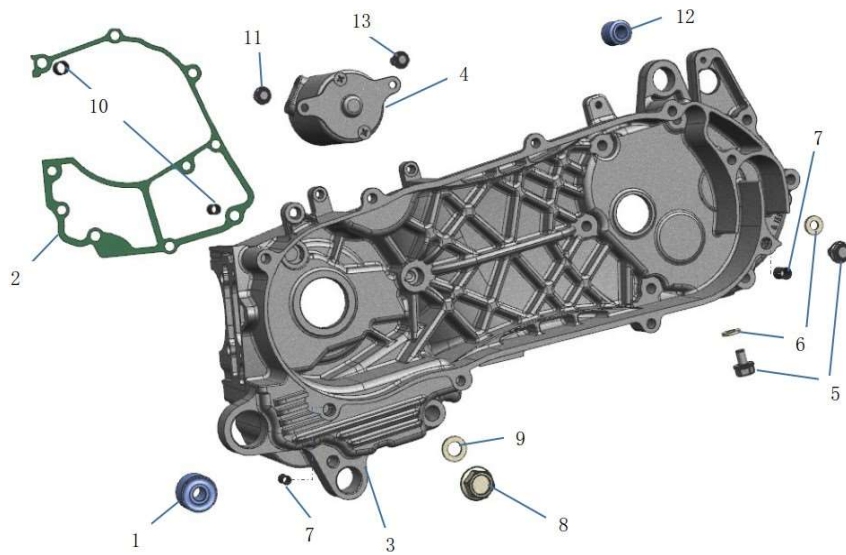


20

序号 No.	件号 Part No.	英文名称 Description	数量 Qty	备注 Remark
1	8. RA-04-004	MISSION CASE COMP.(DISK)	1	
2	8. RA-10-003-I	MISSION COVER GASKET	1	
3	8. RA-05-012	DRIVE SHAFT	1	
4	8. RA-05-013	COUNTER SHAFT COMP.	1	
5	8. RA-05-014	FINAL SHAFT	1	
6	8. RA-05-015	FINAL GEAR	1	
7	8. RA-07-10×14	DOWEL PIN 10X14	2	9402-10*14
8	8. RA-07-6301-TPI	RADIAL BALL BRG. 6301	1	9701-6301/P6
9	8. RA-07-6204	RADIAL BALL BRG.6204E-TD	1	9701-6204E-TD
10	8. RA-08-34×52×8	OIL SEAL 32X47X7	1	
11	8. RA-08-20×32×6	OIL SEAL 20X32X6	1	9602-FB20*32*6-VI
12	8. 700-95-φ17×φ30×1	FINAL SHAFTWASHER φ17×φ30×1	1	
13	8. RA-07-6203	RADIAL BALL BRG.6203	1	9701-6203/P6
14	8. RA-07-6301	RADIAL BALL BRG.6301	2	9701-6301/P6
15	8. RA-07-6205 RS	RADIAL BALL BRG.6205-RS	1	

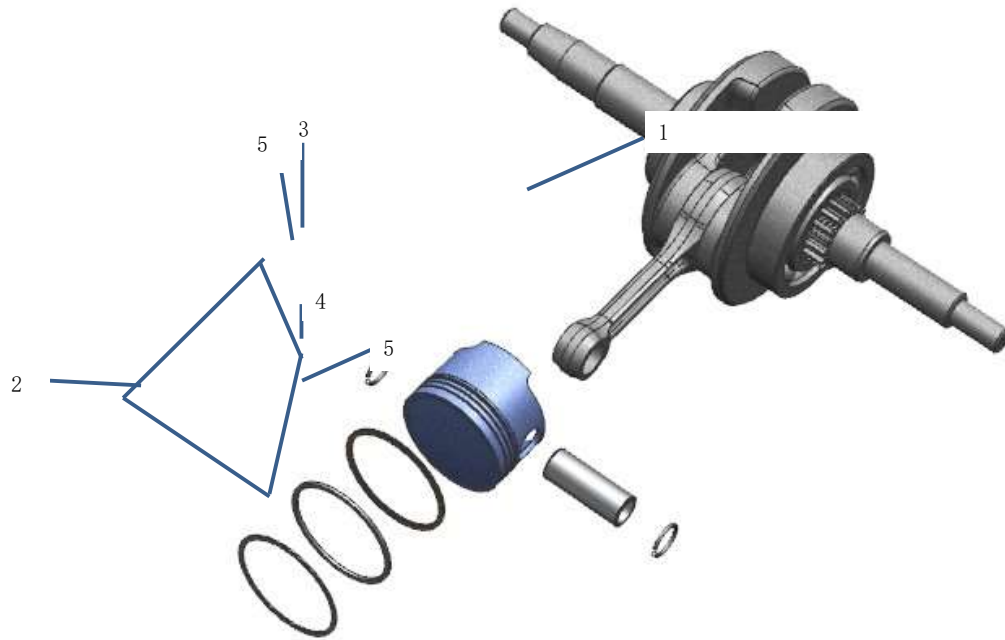
16	8.700-5789-M8×55-WZ	FLANGE BOLT M8X55	2	
17	8.700-5789-M8×60-WZ	FLANGE BOLT M8X60	1	
18	8.700-5789-M8×65-WZ	FLANGE BOLT M8X65	3	
19	8.700-5789-M8×70-WZ	FLANGE BOLT M8X70	1	
20	8.RA-08-018	CONTAIN CLAMP	1	

E12	LCRANK CASE (左箱总成)		
-----	--------------------	--	--



序号 No.	件号 Part No.	英文名称 Description	数量 Qty	备注 Remark
1	8. RA-08-010	ENG.HANGER RUBBER BUSH	1	3J3-11005-0000
2	8. RA-10-002-I	R.CRANK CASE GASKET	1	3J3-11007-0000
3	8. RA-03-002	L.CRANK CASE COMP.	1	
4	8. RA-06-012	START MOTOR ASSY.	1	3J3-18100-0000
5	8. 700-5789-M8×12-CZ	SPECIAL BOLT M8×12	2	
6	8. 700-95-φ8×φ16×2	WASHER 8mm	2	9301-8*16*2-AL
7	8. RA-07-10×14	DOWEL PIN 10X14	2	9402-10*14
8	8. 700-5789-M12×15-CZ	DRAIN PLUG BOLT M12×15	1	9103-M12*15-C

9	8. 700-95-φ12×φ20×2	PLUG DRAIN WASHER 12mm	1	9301-12*20*2-AL
10	8. RA-07-8×14	DOWEL PIN 8X14	2	9402-10*14
11	8. 700-5789-M6×16-CZ	SH.FLANGE BOLT M6X16	1	
12	8. RA-08-011	ENG.HANGER RUBBER BUSH	1	
13	8. 700-5789-M6×18-CZ	DRAIN PLUG BOLT M6×18	1	
E13	CRANK SHAFT (曲轴总成)			





序号 No.	件号 Part No.	英文名称 Description	数量 Qty	备注 Remark
1	8. RA-02-003-125	CRANK SHAFT COMP.	1	3J3-06100-0000
2	8. RA-02-004-125	PISTON RING SET	1	3J3-06200-0000
3	8. RA-02-005-125	PISTON	1	
4	8. RA-02-006-125	PISTON PIN 7X10X29.2	1	3J3-06002-0000
5	8. RA-02-007	PISTON PIN CLIP	2	3J3-06003-0000

