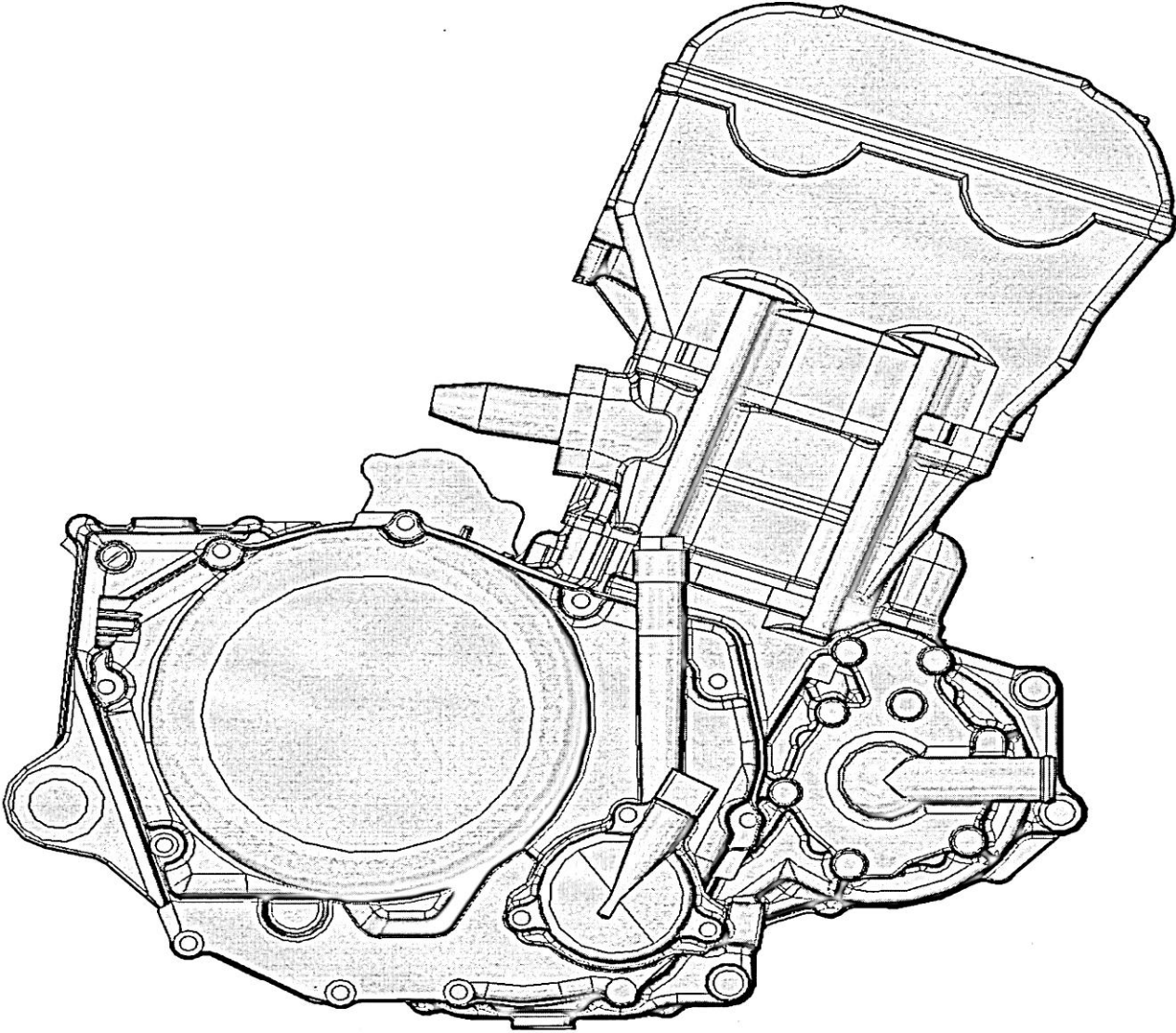


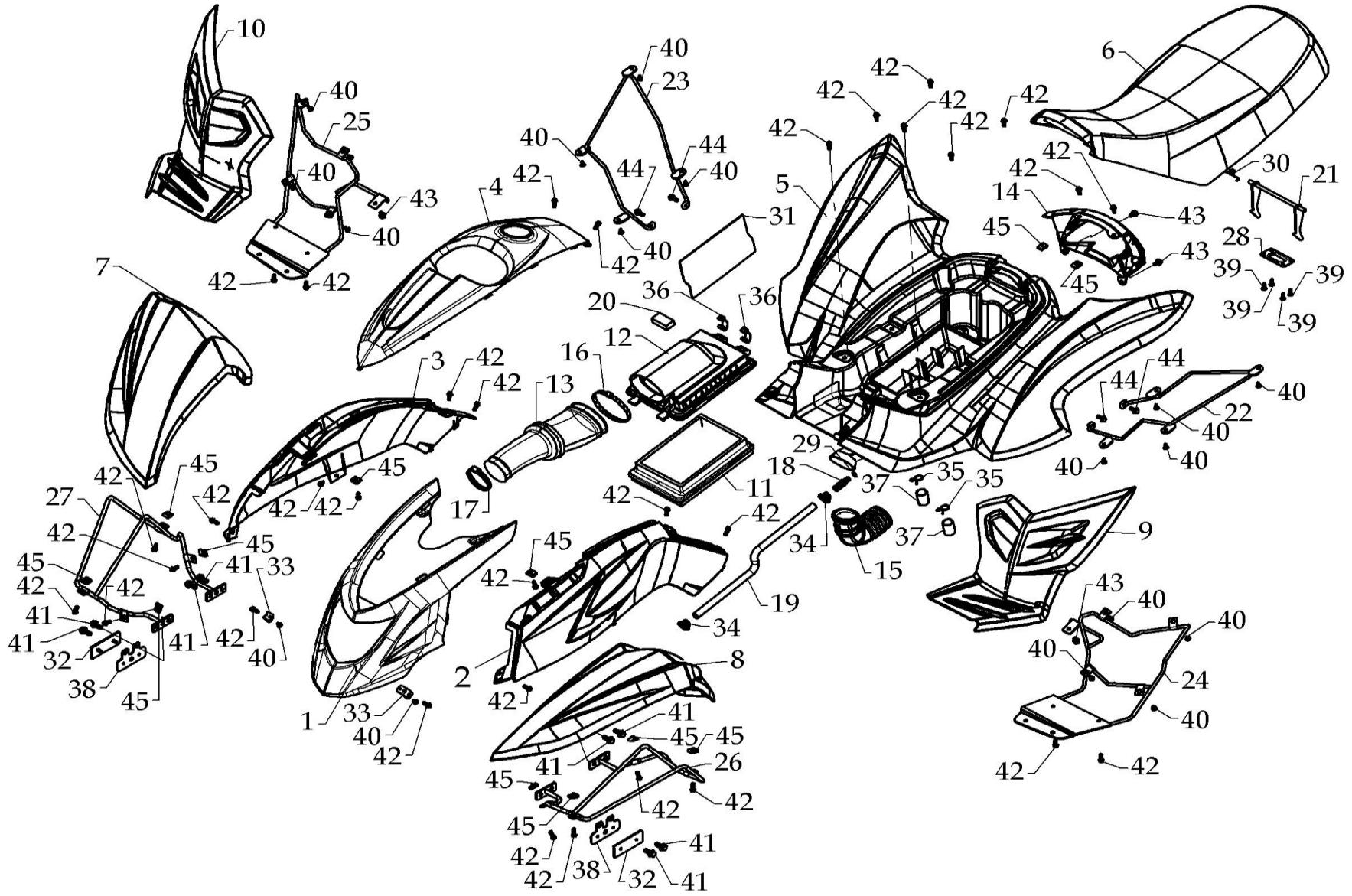
ENGINE



**ENGINE**

Model	Item	Part no	Description	Specification	Quantity
	01	E140000-01	E14 ENGINE	450C.C.	1

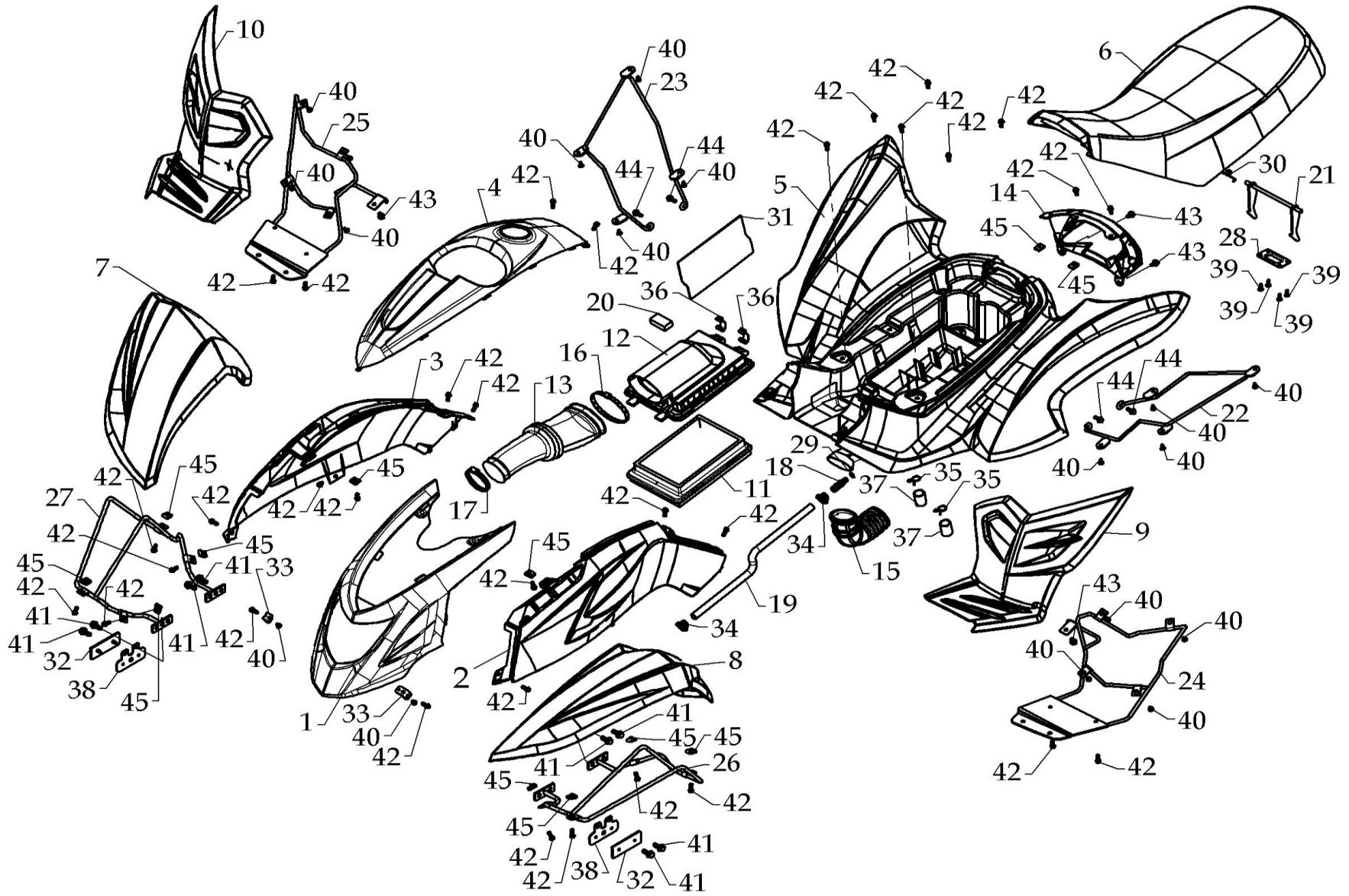
# FENDER, SEAT



**FENDER, SEAT**

<b>Model</b>	<b>Item</b>	<b>Part no</b>	<b>Description</b>	<b>Specification</b>	<b>Quantity</b>
	01	F150195	COVER, HEADLIGHT		1
	02	F150092	LEFT COVER, FRONT FENDER		1
	03	F150093	RIGHT COVER, FRONT FENDER		1
	04	F150194-07	FUEL TANK COVER		1
	05	F150090	REAR FENDER		1
	06	F150089A00	SEAT		1
	07	F150100	LEFT FRONT LEFT FENDER		1
	08	F150101	RIGHT FRONT RIGHT FENDER		1
	09	F150096A15	FOOTBOARD		1
	10	F150097A15	FOOTBOARD		1
	11	F150182-00	FILER ELEMENT, FOAM		1
	12	F150083-15	AIR BOX COVER		1
	13	F150085A00	INTAKE DUCT, CARBURETOR		1
	14	F150157	COVER, TAIL LIGHT		1
	15	F150122A00	INTAKE DUCT, AIRCLEANER		1
	16	F150121-41	CLAMP		1
	17	F150123-41	CLAMP		1
	18	F150126A00	CONNECTOR		1
	19	F150128-01	HOSE	Ø12XØ17X450	1
	20	F150131-00	ELEMENT		1
	21	F150149-42	SEAT FIXED HOOK		1
	22	F150191A50	REAR FENDER BRACKET		1
	23	F150192A50	REAR FENDER BRACKET		1
	24	F150221-50	FOOT BOARD BRACKET		1
	25	F150222-50	FOOT BOARD BRACKET		1
	26	F150228-50	FRONT LEFT FENDER BRACKET		1
	27	F150229-50	FRONT RIGHT FENDER BRACKET		1
	28	F030021-42	PLATE, SEAT HOOK		1

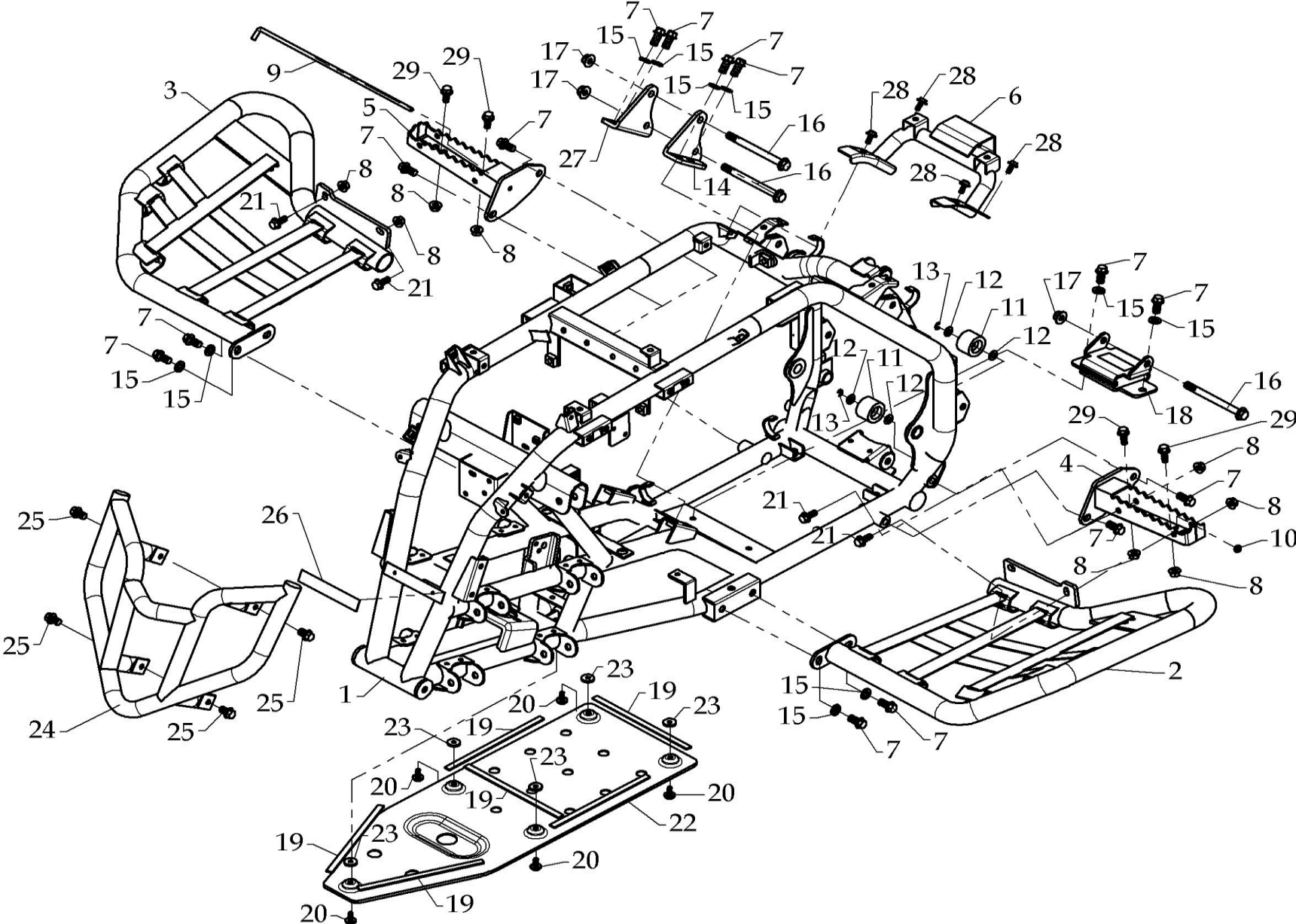
# FENDER, SEAT



**FENDER、 SEAT**

<b>Model</b>	<b>Item</b>	<b>Part no</b>	<b>Description</b>	<b>Specification</b>	<b>Quantity</b>
	29	A100015-43	CIRCLIP	Ø10	1
	30	A110043-00	TWIST SPRING		1
	31	F140197-00	HEAT INSULATE		1
	32	F020266-00	REFLECTER	Yellor,CE	2
	33	A230034-50	BRACKET		2
	34	F150127-41	CLAMP		2
	35	F150129-00	CLAMP		2
	36	F150169-41	CLIP		2
	37	F150130-00	DRAINAGE PLUG		2
	38	F150179A50	REFLECTER BRACKET		2
	39	A130005-43	TAPPING SCREW	5mmx16L	4
	40	A130018-43	TAPPING SCREW	5mmx12L	18
	41	A050049-41	HEXAGONAL FLANGE BOLT	M8xP1.25x16L	8
	42	A050023-41	HEX BOLT	M6xP1.0x16L	34
	43	A050017-41	HEXAGONAL FLANGE BOLT	M6xP1.0x12L	4
	44	A050024-41	HEXAGONAL FLANGE BOLT	M6xP1.0x16L	4
	45	F020195-43	CLIP NUT	M6x1.0	12

FORNT FRAME

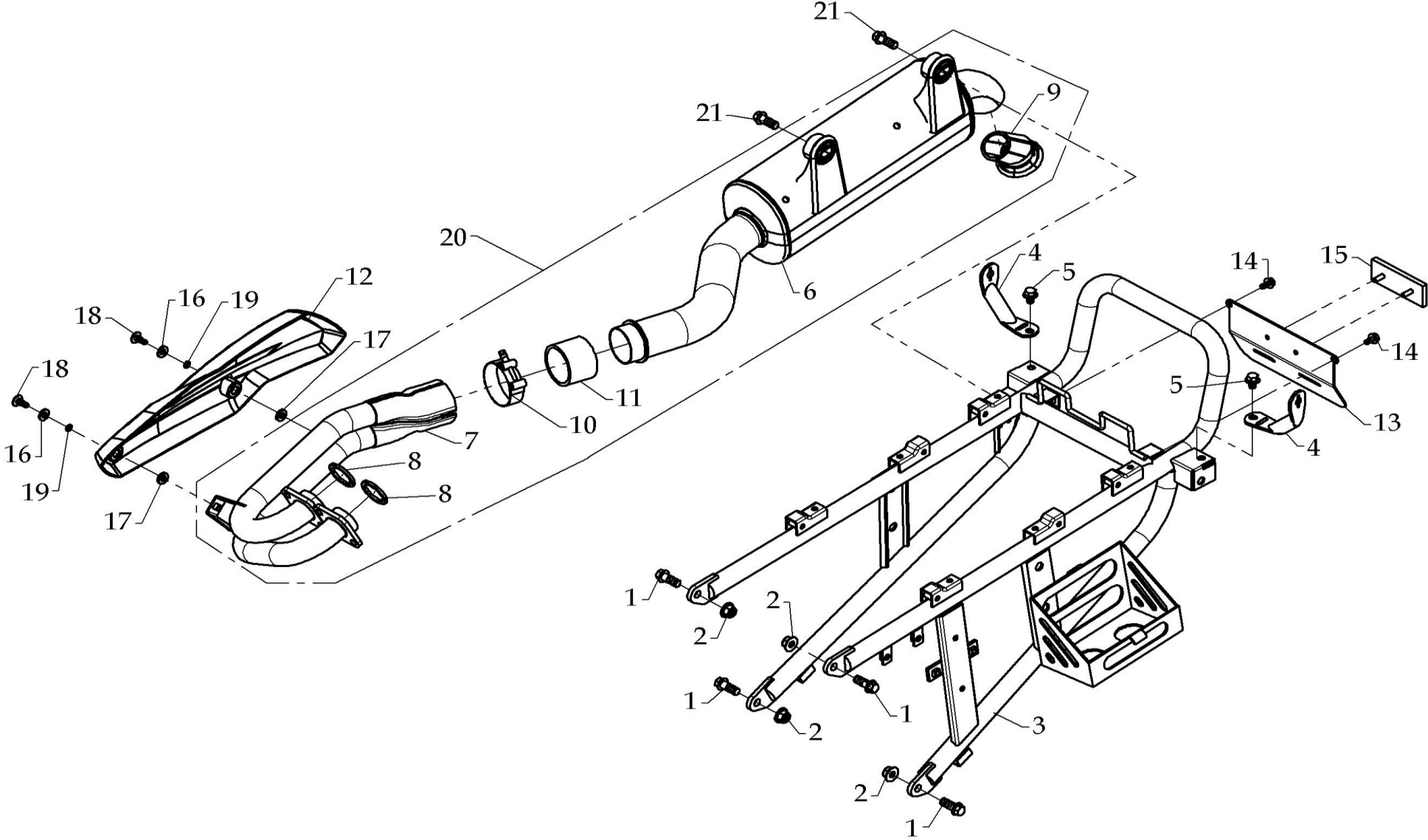


## FORNT FRAME

Model	Item	Part no	Description	Specification	Quantity
	01	F190048E48	FRAME		1
	02	F150071-98	FOOT PROTECT NET BRACKET	LEFT	1
	03	F150072-98	FOOT PROTECT NET BRACKET	RIGHT	1
	04	F150075B48	FOOTREST	LEFT SIDE	1
	05	F150076B48	FOOTREST	RIGHT SIDE	1
	06	F150168A48	SEAT BRACKET		1
	07	A050109-41	HEXAGONAL FLANGE BOLT	M10X1.25X20L	14
	08	A060014-41	LOCK NUT	M8X1.25	8
	09	F150160-42	L-TYPE BOLT	M6X1.0X320L	1
	10	A060053-41	LOCK NUT	M6X1.0	1
	11	F150132-00	CHAIN PASSIVE ROLLER		2
	12	A080095-41	PLAIN WASHER	Ø8.2XØ16X1t	4
	13	A100014-43	E CLIP	Ø6	2
	14	F190045A50	LEFT ENGINE BRACKET		1
	15	A080009-41	SPRING WASHER	Ø10.2XØ3.7X2.5t	10
	16	A050068A41	HEXAGONAL FLANGE BOLT	M10X1.25X115L	3
	17	A060007-41	LOCK NUT	M12X1.25	3
	18	F190044-50	ENGINE DAMPER		1
	19	F020096-00	DAMPER		6
	20	A050017-41	HEXAGONAL FLANGE BOLT	M6xP1.0x12L	5
	21	A050084-41	HEXAGONAL FLANGE BOLT	M6XP1.0X20L	4
	22	F150162-48	PROTECT PLATE		1
	23	A080102-00	RUBBER WASHER	Ø6XØ19X3t	5
	24	F150087-54	BUMPER		1
	25	A050005-41	HEXAGONAL FLANGE BOLT	M10X1.25X15L	4
	26	A990209-00	VIN PLATE	e3x2002/24x0337x00	1
	27	F190046A50	RIGHT ENGINE BRACKET		1
	28	A050023-41	HEXAGONAL FLANGE BOLT	M6x1.0x16L	4
	29	A050049-41	HEXAGONAL FLANGE BOLT	M8xP1.25x16L	4



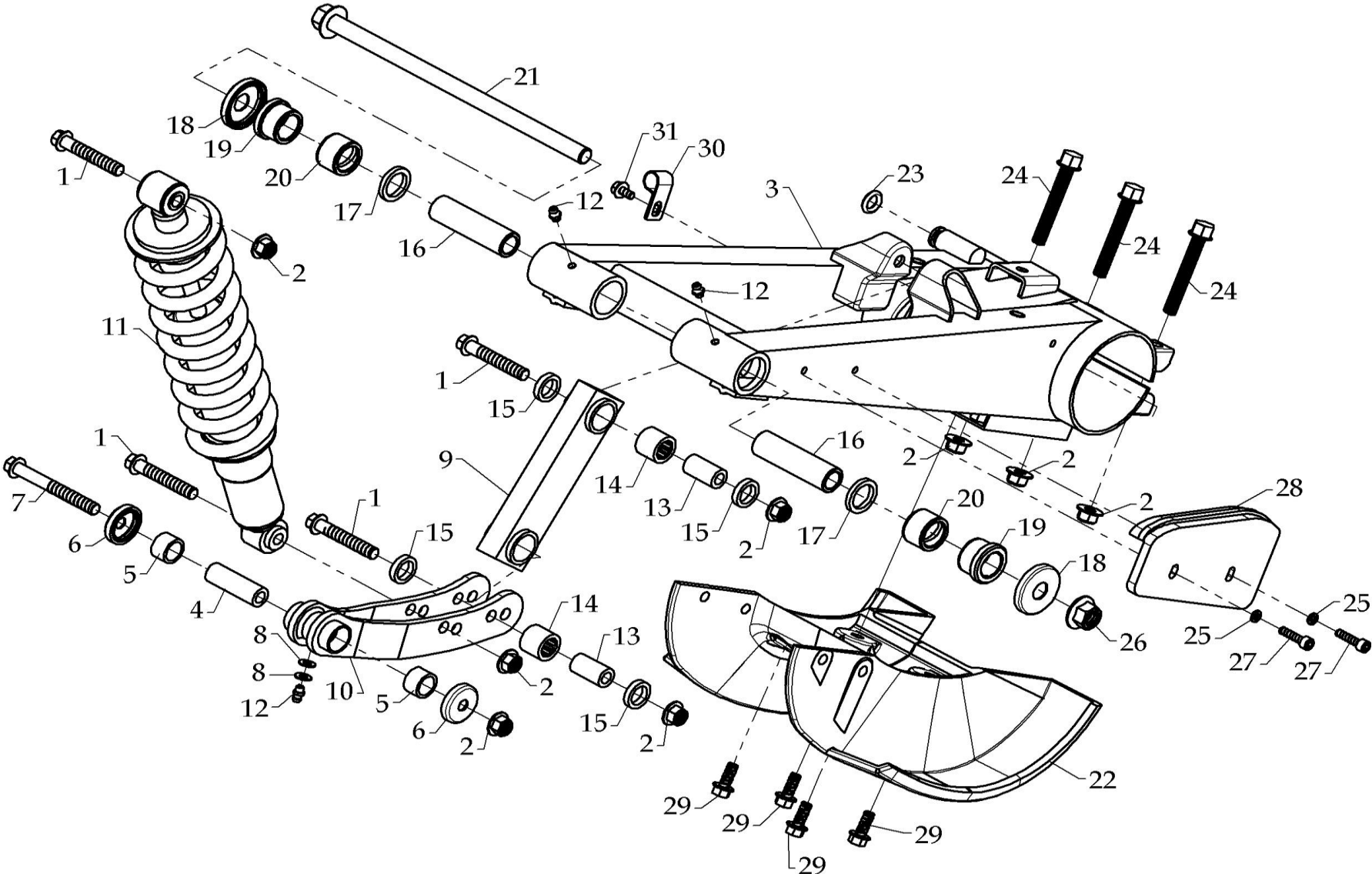
REAR FRAME(E-MARK)



**REAR FRAME(E-MARK)**

<b>Model</b>	<b>Item</b>	<b>Part no</b>	<b>Description</b>	<b>Specification</b>	<b>Quantity</b>
	01	A050201-41	HEXAGONAL FLANGE BOLT	M10x1.25x25L	6
	02	A060007-41	LOCK NUT	M10x1.25	4
	03	F150088C48	SUB FRAME		1
	04	F150196-50	BERACKET,DIRECTIONAL LIGHT		2
	05	A050020-41	HEXAGONAL FLANGE BOLT	M8x1.25x12L	2
	06	F150233-01	EXHAUST SILENCER		1
	07	F150232-01	EXHAUST PIPE		1
	08	F150082-00	GASKET CP,EX PIPE		2
	09	F150078-00	AFTER BURNET		1
	10	F150180-00	CLAMP	Ø2 1/8"~Ø2 1/6"	1
	11	F150181-00	GHAPHITE RING	Ø60xØ51x40L	1
	12	F150224-00	PROTECTIVE COVER		1
	13	F150154B50	LICENSE PLATE		1
	14	A050017-41	HEXAGONAL FLANGE BOLT	M6x1.0x12L	2
	15	F020265-00	REFLECTER	red,CE	1
	16	A080109-00	HEAT INSULATE WASHER	Ø7.8xØ16x2t	2
	17	A080108-00	HEAT INSULATE WASHER	Ø7.8xØ16x3t	2
	18	A050233-00	HEXAGONAL SOCKET BOLT	M6x1.0x16L	2
	19	A040042-00	O RING	Ø1.9XØ5.8	2
	20	F150230-01	EXHAUST PIPE ASSY	M6x1.0x20L	1
	21	A050001-41	HEXAGONAL FLANGE BOLT	M10x1.25x40L	2

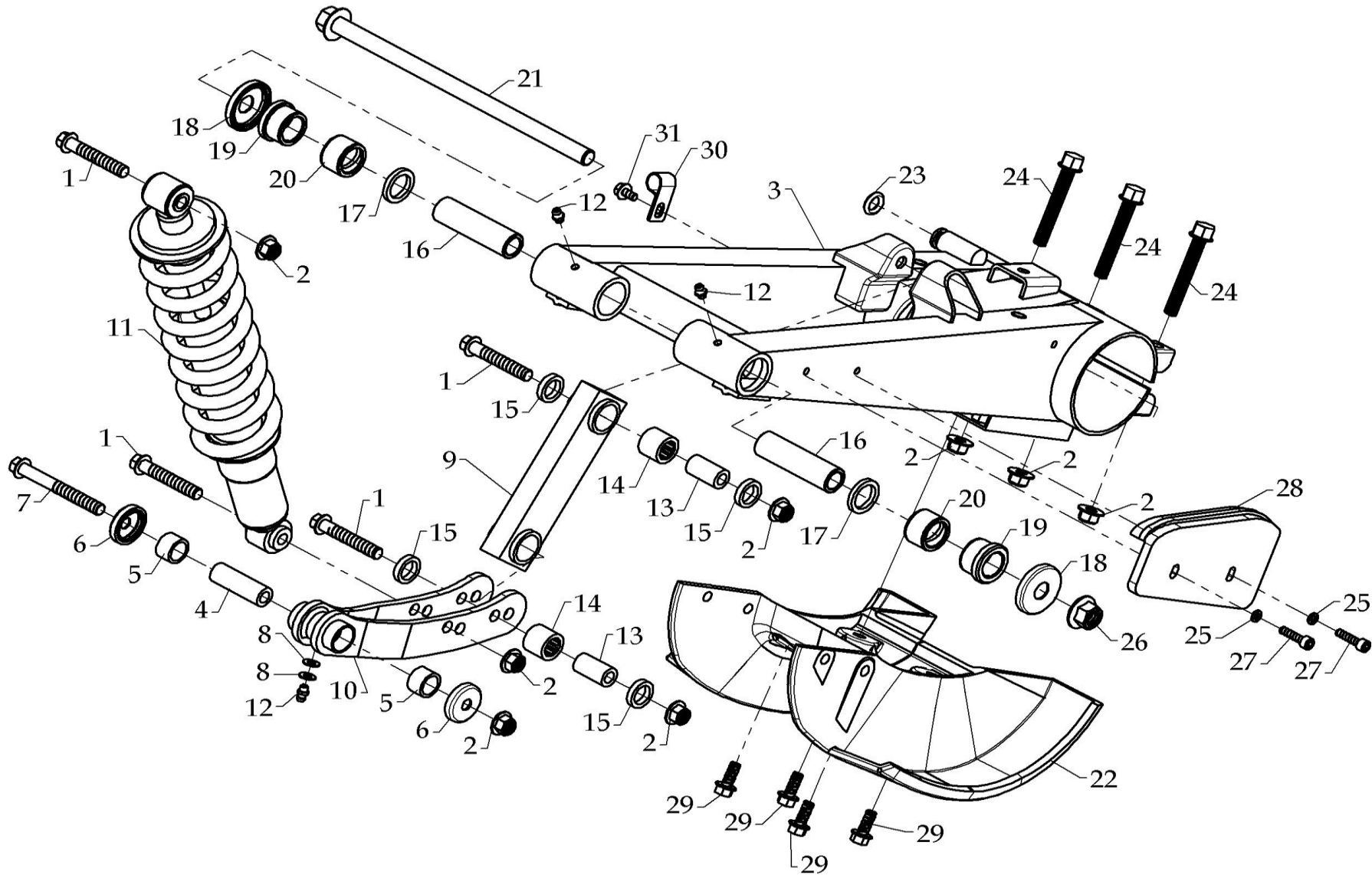
SWING ARM SUB ASS'Y



**SWING ARM SUB ASS'Y**

<b>Model</b>	<b>Item</b>	<b>Part no</b>	<b>Description</b>	<b>Specification</b>	<b>Quantity</b>
	01	A050230-41	HEXAGONAL FLANGE BOLT	M10X1.25X60L-10T	4
	02	A060007-41	INSERT LOCK NUT	M10X1.25	8
	03	F150024F48	SWING ARM		1
	04	A090024B00	SPACER	Ø10XØ17X51.3L	1
	05	A020001-00	BUSH		2
	06	F090041-00	SEAL COVER		2
	07	A050229-41	HEXAGONAL FLANGE BOLT	M10X1.25X85L-10T	1
	08	A080036-41	PLAIN WASHER	Ø6.5XØ13X1.0t	2
	09	F190050-48	REAR LINKAGE		1
	10	F150142B48	FRONT LINKAGE		1
	11	F150043A00	REAR SUSPENSION		1
	12	F020140-00	GREASE VALVE		3
	13	A090023A00	SPACER	Ø10XØ17X31L	2
	14	A010054-00	NEEDLE BEARING	TA1720,Ø24XØ17X20t	2
	15	A030033-00	SEAL	VCØ24XØ17X5t	4
	16	A090030-00	SPACER	Ø15.5XØ22X77L	2
	17	A030030-00	SEAL	TCX4 22X30X4, OS-3704	2
	18	A030035-00	DUST COVER	Ø15.5XØ34.2XØ44X6.2t	2
	19	A020008-00	BUSHING		2
	20	A020009-00	BUSHING	Ø22XØ30X20L	2
	21	A050187-41	HEXAGONAL FLANGE BOLT	M14X1.5LX274L	1
	22	F150109-00	PROTECTOR		1
	23	A040034-00	O RING	Ø12X4	1
	24	A050185-41	HEXAGONAL FLANGE BOLT	M10X1.25X70L	3
	25	A080026-41	PLAIN WASHER	Ø6.5XØ19X2t	2
	26	A060006-41	LOCK NUT	M14X1.5	1
	27	A050029-43	HEX SOCKET BOLT	M6X1.0X25L	2
	28	F150110-00	CHAIN GUIDE		1

# SWING ARM SUB ASS'Y

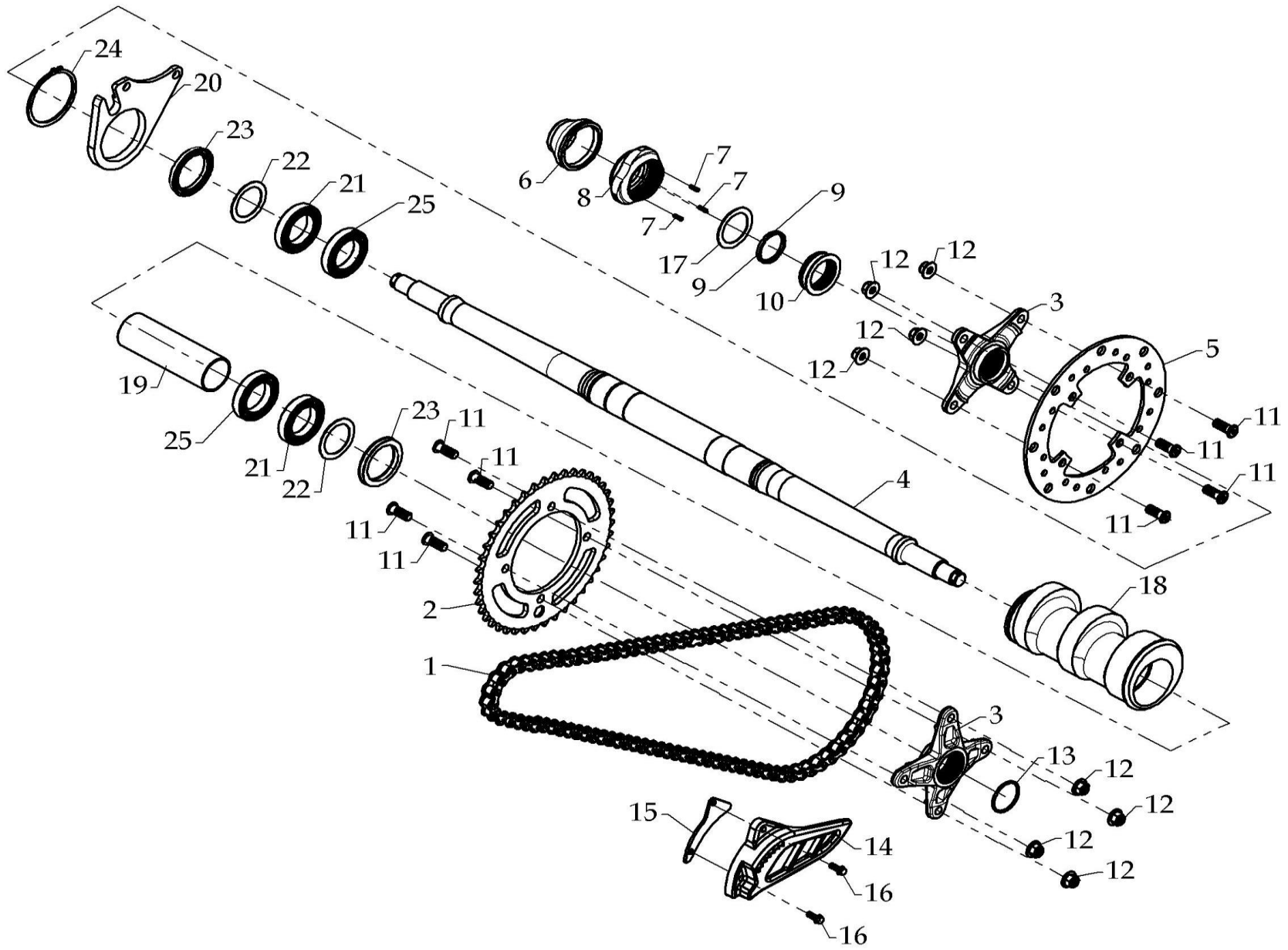


D1027-051A

**SWING ARM SUB ASS'Y**

<b>Model</b>	<b>Item</b>	<b>Part no</b>	<b>Description</b>	<b>Specification</b>	<b>Quantity</b>
	29	A050084-41	HEXAGONAL FLANGE BOLT	M8X1.25X20L	4
	30	A220011-00	CLIP		1
	31	A050017-43	HEXAGONAL FLANGE BOLT	M6xP1.0x12L	1

# REAR AXLE



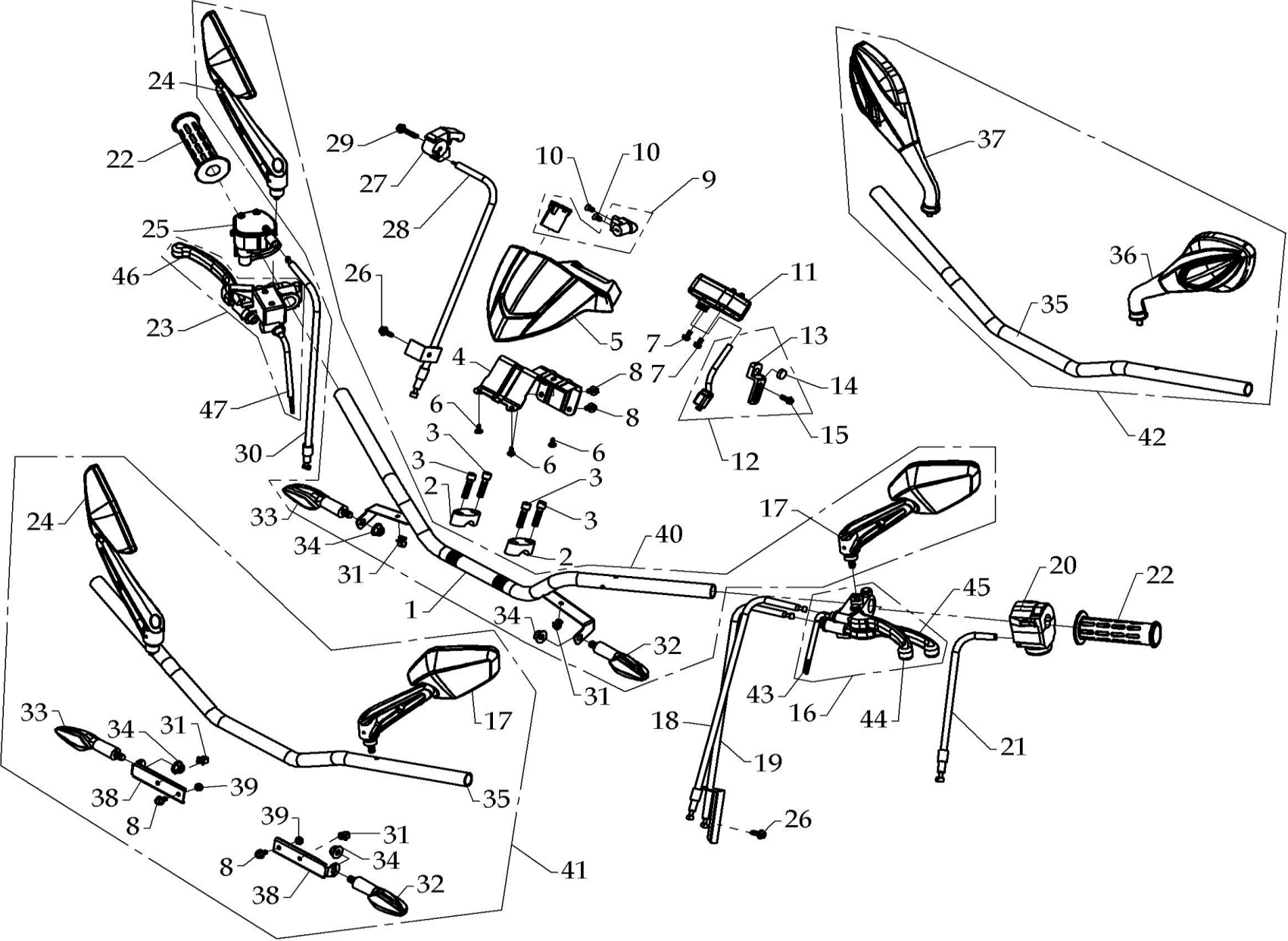
D1027-061A

**REAR AXLE**

<b>Model</b>	<b>Item</b>	<b>Part no</b>	<b>Description</b>	<b>Specification</b>	<b>Quantity</b>
	01	F150041-00	DRIVE CHAIN	520-96 LINKS	1
	02	F150029-43	SPROCKET	42TX130	1
	03	F150030-44	HOLDER		2
	04	F150028-44	REAR AXLE		1
	05	F150039-01	DISK,BRAKE	Ø220	1
	06	F150033-00	PROTECT COVER		1
	07	F150034-43	HEXAGONAL SOCKET BOLT	M4X0.7X12L	3
	08	F150035-44	REGULATOR NUT		1
	09	F150036-43	REGULATOR RING		1
	10	F150037-44	REGULATOR BOLT		1
	11	A050203A41	SOCKET BOLT	M10X1.25X26L	8
	12	A060007-41	LOCK NUT	M10X1.25	8
	13	A100026-41	CIRCLIP		1
	14	F150107-00	CHAIN COVER		1
	15	F150148-00	CHAIN COVER BRACKET		1
	16	A050130-41	HEXAGONAL FLANGE BOLT	M6X1.0X16L	2
	17	F150038-41	REGULATOR WASHER		1
	18	F150026-00	AXLE ECCENTRIC		1
	19	F150025-41	SPACER		1
	20	F190060-50	CALIPER HODER		1
	21	A010051-02	BEARING	6908ZZ(40x62x12)	2
	22	A080084-41	PLAIN WASHER	54X40X1.0t	2
	23	A030031-00	SEAL	48X62X7 mm	2
	24	A100022-43	C TYPE CIRCLIP	Ø79.5XØ64X2.5t	1
	25	A010051-04	BEARING,RADIAL BALL	6908LLU(40x62x12)	2



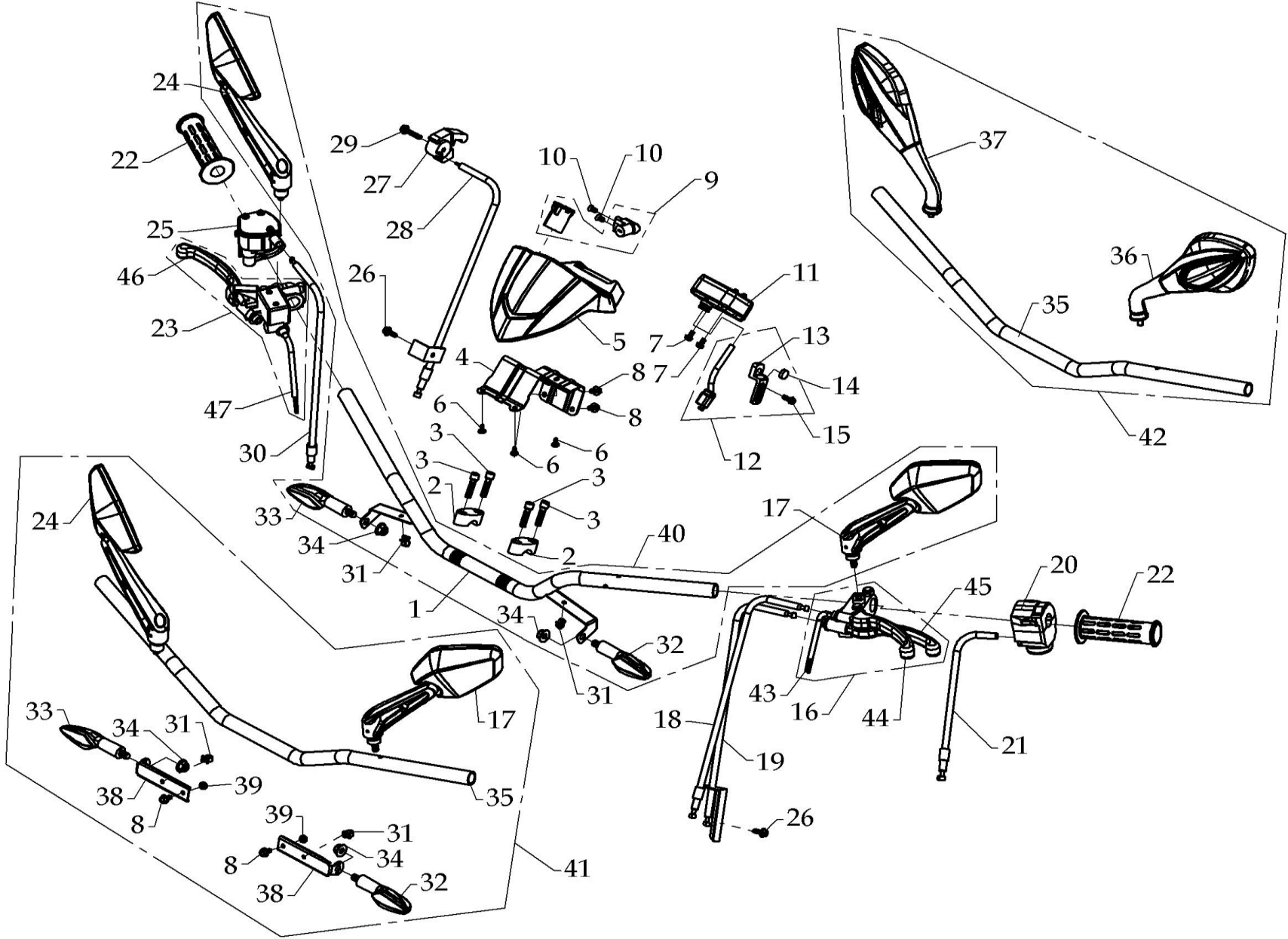
HANDLEBAR



## HANDLEBAR

Model	Item	Part no	Description	Specification	Quantity
	01	F140018A48	HANDLEBAR		1
	02	F150219-00	UPPER HANDLEBAR CLAMP		2
	03	A050189-41	SHCS	M8x1.25x30L	4
	04	F140042A48	BRACKET,SPEEDOMETER COVER		1
	05	F140004	SPEEDOMETER COVER		1
	06	A130018-43	TAPPING SCREW	5mmx12L	3
	07	A050095-41	PHILIPS SCREW & WASHER	M5X0.8X12L	2
	08	A050017-43	HEXAGONAL FLANGE BOLT	M6X1.0X12L	2
	09	F150105-00	MAIN POWER SWITCH		1
	10	A050090-41	MACHINE SCREW	M6X1.0X8L	2
	11	F150104A00	SPEEDOMETER	DINLI LOGO	1
	12	F150103-00	SPEEDOMETER WIRE ASSY'		1
	13	F150209-00	SENSOR BRACKET		1
	14	F150211-00	MAGNET SENSOR		1
	15	A050023-41	HEXAGONAL BOLT & WASHER	M6x1.0x16L	1
	16	A190087-00	LEFT LEVER ASSY		1
	17	A160005-00	REAR-VIEW MIRROR	LEFT SIDE	2
	18	F190062A00	PARKING BRAKE CABLE		1
	19	F150065-00	CLUTCH CABLE		1
	20	A190056A00	LEFT SWITCH ASSY'		1
	21	F150066-00	CHOKE CABLE		1
	22	F150120-00	HANDLE GRIP		2
	23	A190089-00	RIGHT LEVER ASSY	Ø14	1
	24	A160006-00	REAR-VIEW MIRROR	RIGHT SIDE	2
	25	F150161-00	THROTTLE	CE	1
	26	A050024-41	HEXAGONAL FLANGE BOLT	M6x1.0x16L	2
	27	F150068-00	REVERSE SWITCH		1
	28	F150070-00	REVERSE SWITCH CABLE		1

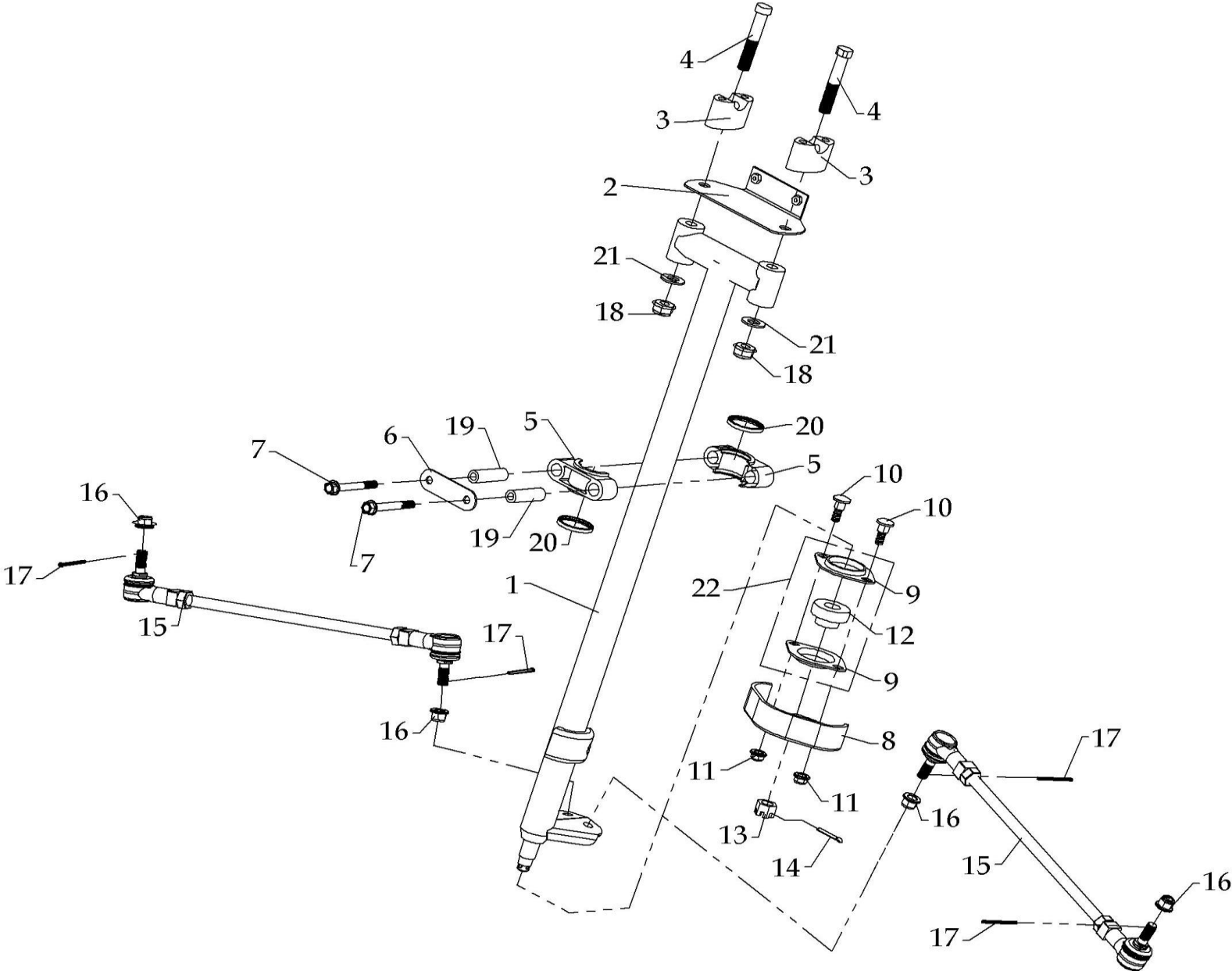
HANDLEBAR



## HANDLEBAR

Model	Item	Part no	Description	Specification	Quantity
	29	A050134-41	HEXAGONAL FLANGE BOLT	M6x1.0x32L	1
	30	F150063-00	THROTTLE CABLE		1
	31	F020578-15	CLIP		4
	32	A180078-00	DIRECTIONAL SIGNAL	(FR/RL)	2
	33	A180079-00	DIRECTIONAL SIGNAL	(FL/RR)	2
	34	A060010-41	HEXAGONAL FLANGE NUT	M10x1.25	4
	35	F150067A50	HANDLEBAR		2
	36	A180059-00	REAR-VIEW MIRROR	L=15mm	1
	37	A180060-00	REAR-VIEW MIRROR	L=15mm	1
	38	F150234-50	BRACKET,DIRECTIONAL		2
	39	A060053-41	LOCK NUT	M6x1.0	2
	40	F150235-01	DIRECTIONAL STYLE 1		1
	41	F150235-02	DIRECTIONAL STYLE 2		1
	42	F150235-03	DIRECTIONAL STYLE 3		1
	43	A190057-00	CLUTCH SENSOR		1
	44	A190096-00	MANUAL LEVER		1
	45	A190097-00	MANUAL LEVER		1
	46	F020268-00	MANUAL LEVER		1
	47	A190029-00	LIMIT SWITCH		1

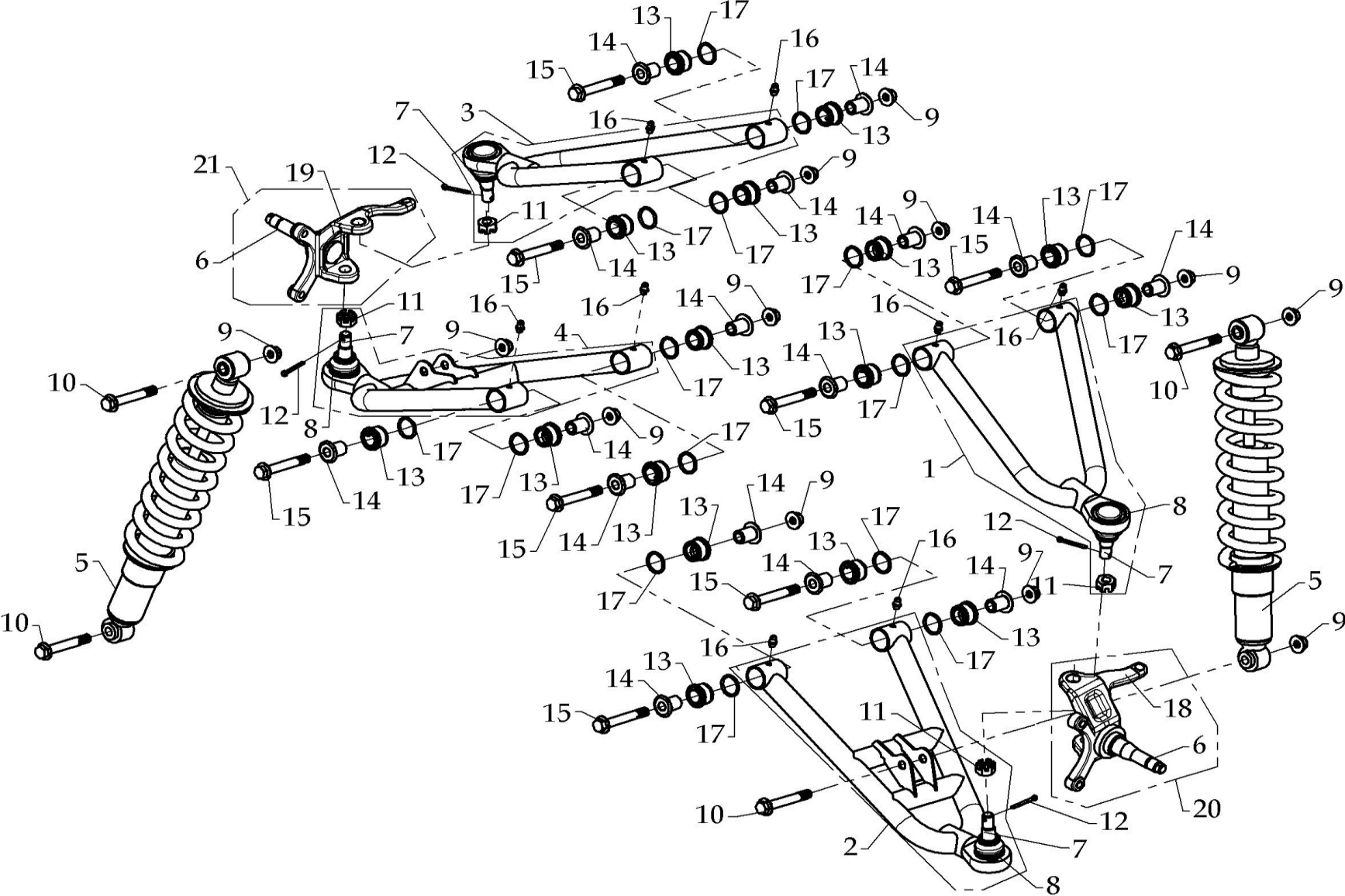
STEERING



## STEERING

Model	Item	Part no	Description	Specification	Quantity
	01	F150047C48	STEERING		1
	02	F150164A50	BRACKET,SPEEDOMETER COVER		1
	03	F150220-00	LOWER HANDLEBAR CLAMP		2
	04	A050228-41	LOCATION BOLT	M12X1.75X70L	2
	05	F140019-00	STEERING CLAMP		2
	06	F140082-41	FIXED PLATE		1
	07	A050010-41	HEXAGONAL FLANGE BOLT	M8x1.25x65L	2
	08	F150152-48	CHANGE DIRECTION LIMIT		1
	09	F150049-41	BEARING HOLDING		2
	10	A050212-41	FLANGE-HEAD BOLT	M8X1.25X25L	2
	11	A060014-41	LOCK NUT	M8X1.25	2
	12	A010053-00	BEARING	SB203-17	1
	13	A060026B42	CADTLE NUT	M14 X1.5	1
	14	A070002-41	COTTER PIN	Ø3.2X32L	1
	15	F150206-00	STEERING TIE-ROD ASSY.		2
	16	A060007-41	LOCK NUT	M10x1.25	4
	17	A070038-00	COTTER PIN	Ø1.8xØ10	4
	18	A060008-41	LOCK NUT	M12x1.25	2
	19	F140145-42	SPACER		2
	20	A030034-00	SEAL COVER		2
	21	A080106-41	WASHER	Ø13.2XØ25X2t	2
	22	F150048-41	BEARING HOLDING ASSY		1

FRONT SUSPENSIONE

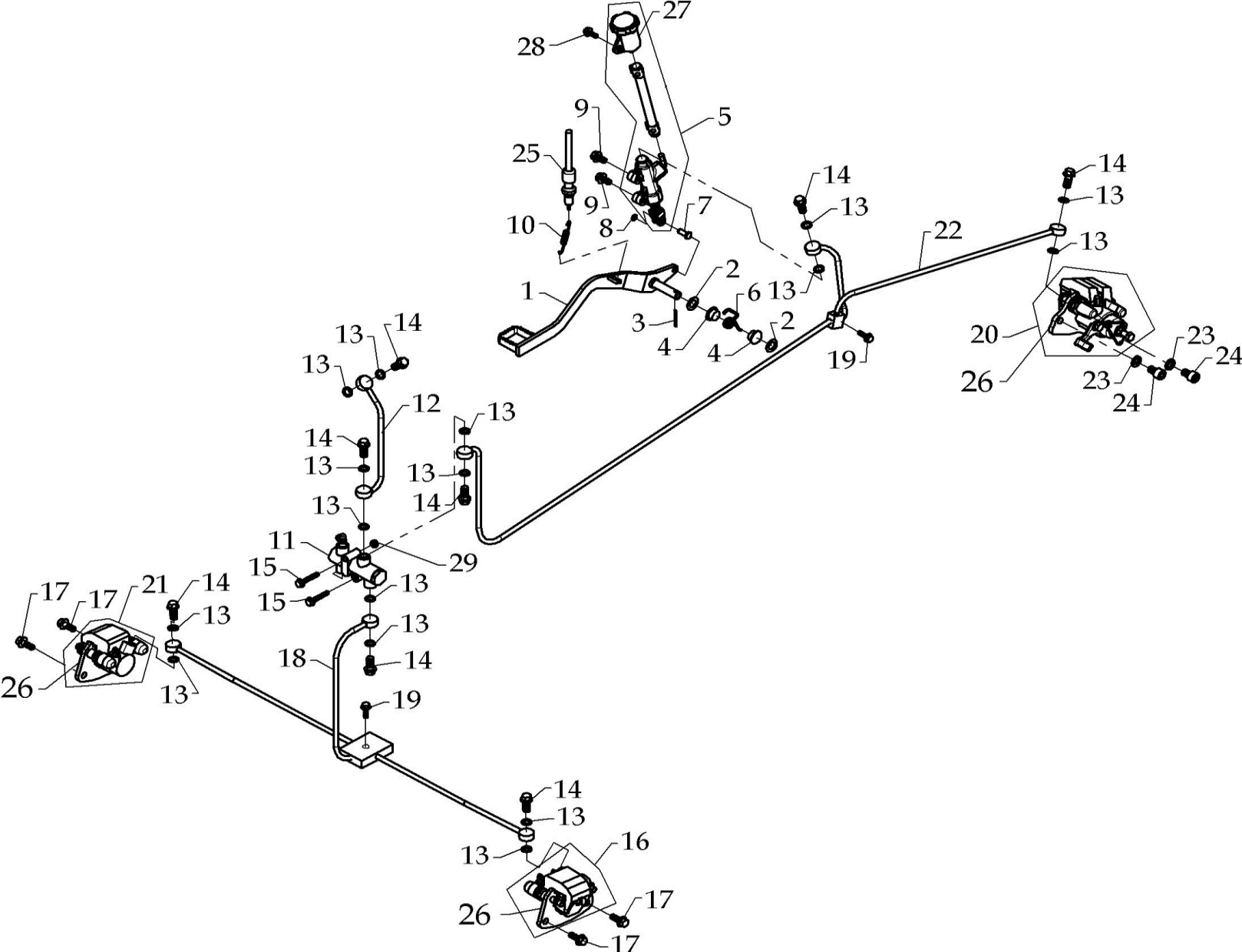


## FRONT SUSPENSIONE

Model	Item	Part no	Description	Specification	Quantity
	01	F150014-48	UPPER-LEFT A-ARM		1
	02	F150012-48	LOWER-LEFT A-ARM		1
	03	F150015-48	UPPER-RIGHT A-ARM		1
	04	F150013-48	LOWER-RIGHT A-ARM		1
	05	F150042-00	SUSPENSIONE		2
	06		KNUCKLE,STEERING		2
	07		BALL JOINT		4
	08		CIRCLIP	Ø30mm	4
	09	A060007-41	LOCK NUT	M10X1.25	12
	10	A050213-41	HEXAGONAL FLANGE BOLT	M10x1.25x50L-8T	4
	11	A060068-41	CASTLE NUT	M10X1.25	4
	12	A070002-41	COTTER PIN	Ø3.2X32L	4
	13	A090031A00	INTERNAL BUSH		16
	14	A090032A43	EXTERIOR BUSH		16
	15	A050185-41	HEXAGONAL FLANGE BOLT	M10X1.25X70L	8
	16	F020140-00	GREASE VALVE		8
	17	A040040-00	O RING	P22	16
	18		LEFT KNUCKLE		1
	19		RIGHT KNUCKLE		1
	20	F150019A46	LEFT KNUCKLE ASSY		1
	21	F150020A46	RIGHT KNUCKLE ASSY		1



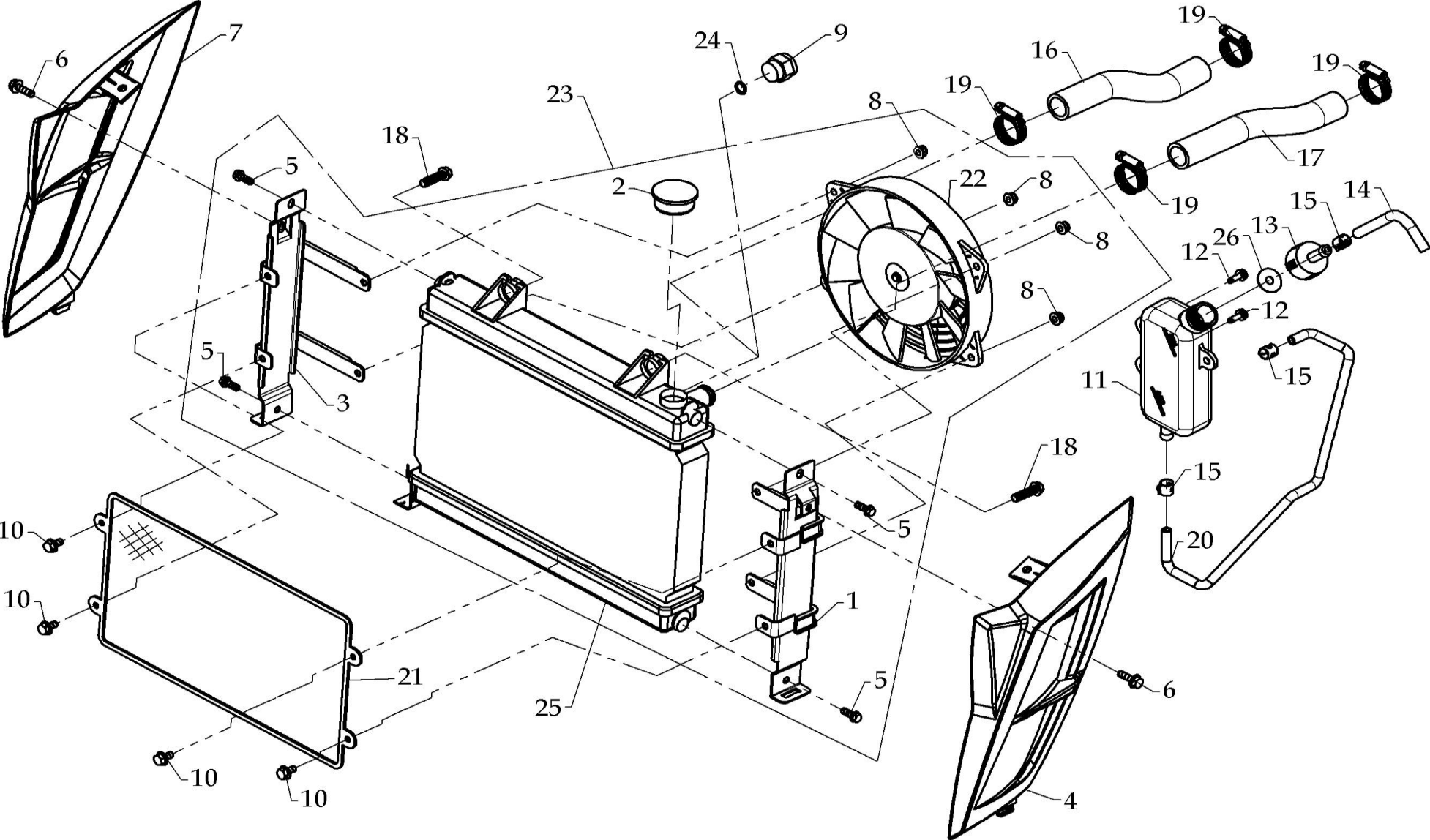
**BRAKE SYSTEM**



## BRAKE SYSTEM

Model	Item	Part no	Description	Specification	Quantity
	01	F150044B48	BRAKE PEDAL		1
	02	A080086-41	WASHER	Ø13xØ22x0.8t	2
	03	A070011-41	COTTER PIN	Ø2.8X32L	1
	04	F150046-00	BUSH		2
	05	F150158-02	BRAKE CYLINDER ASSY		1
	06	A110035-42	TORSION SPRING		1
	07	A070021-42	PIN	Ø7x15	1
	08	A100016-43	E CLIP		1
	09	A050049-41	HEXAGONAL FLANGE BOLT	M8X1.25X16L	2
	10	A110034-00	SPRING,BRAKE SENSOR		1
	11	A220015-00	DISTRIBUTION CYLINDER	Ø14	1
	12	F150200-01	BRAKING HOSE		1
	13	A080011-00	PLAIN WASHER	Ø10.3xØ15x1.5	16
	14	A050009-44	HEXAGONAL FLANGE BOLT	M10X1.25X22L	8
	15	A050069-41	BOLT, FLANGE	M6X1.0X40L	2
	16	F150010-00	CALIPER,LEFT		1
	17	A050197-41	HEXAGONAL FLANGE BOLT	M8X1.0X21L	4
	18	F190056-01	DISTRIBUTION,THREE-WAY		1
	19	A050030-43	HEXAGONAL FLANGE BOLT	M6X1.0X20L	2
	20	F190059-00	REAR CALIPER		1
	21	F150011-00	CALIPER,RIGHT		1
	22	F190058-01	DISTRIBUTION,THREE-WAY		1
	23	A080082-41	PLAIN WASHER	Ø10.5xØ18x2t	2
	24	A050216-41	SOCKET BOLT	M10x1.25x15L	2
	25	A190054-00	BRAKE SENSOR		1
	26	F140239-00	PAD ,DISK BRAKE		3
	27	A160008-00	BROKE RESERVOIR		1
	28	A050024-41	HEXAGONAL FLANGE BOLT	M6x1.0x16L	1
	29	A060053-41	INSERT LOCK NUT	M6X1.0	1

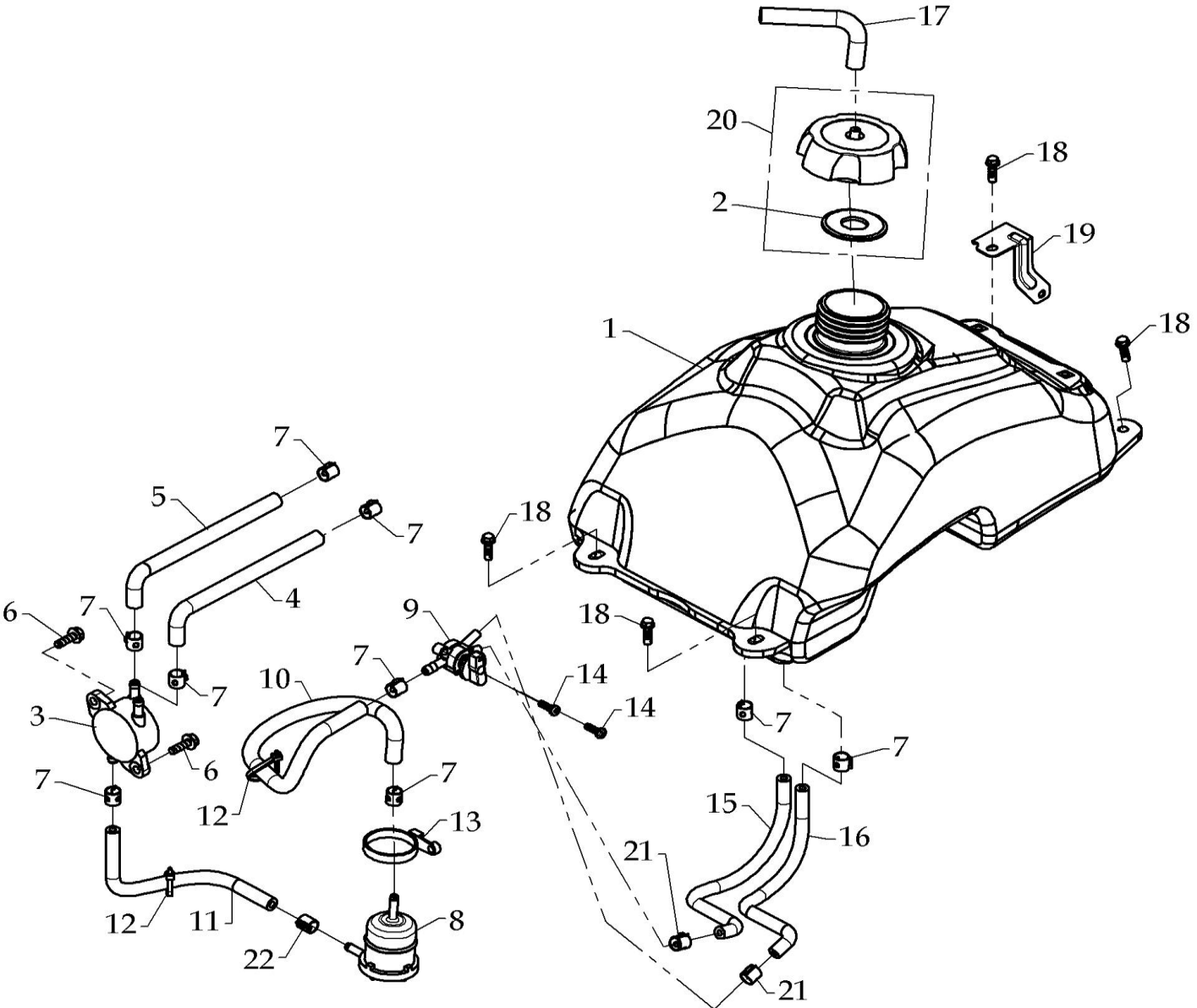
COOLING SYSTEM



## COOLING SYSTEM

Model	Item	Part no	Description	Specification	Quantity
	01	F150188-50	LEFT COVER BRACKET		1
	02	F150059-00	PRESSURE CAP		1
	03	F150189-50	RIGHT COVER BRACKET		1
	04	F150098	LEFT COVER,PROTECT		1
	05	A050023-41	HEX BOLT	M6X1.0X16L	4
	06	A050030-43	HEXAGONAL FLANGE BOLT	M6X1.0X20L	2
	07	F150099	RIGHT COVER,PROTECT		1
	08	A060053-41	INSERT LOCK NUT	M6X1.0	4
	09	A190055-00	TEMP SENSOR		1
	10	A050017-43	HEXAGONAL FLANGE BOLT	M6X1.0X12L	4
	11	F140080-00	COOLANT RESERVOIR		1
	12	A050156-43	PANHEAD SCREW & WASHER	M6X1.0X16L	2
	13	F140087A15	RESERVOIR CAP		1
	14	F020145-00	HOSE		1
	15	A220010-00	FUEL TUBE	Ø11X8X0.7t	3
	16	F150118-00	COOLANT HOSE	Ø12XØ19X170	1
	17	F150058-00	COOLANT HOSE	Ø12XØ19X215	1
	18	A050186-41	HEXAGONAL FLANGE BOLT	M8X1.25X28L	2
	19	F150146-00	CLAMP	Ø30~Ø40	4
	20	A220035-00	HOSE	Ø7XØ11X520L	1
	21	F150185-50	RADIATOR PROTECTOR		1
	22	F170070-00	FAN ASSY		1
	23	F150167B00	RADIATOR ASSY		1
	24	A040041-00	O RING	P10	1
	25	F150057A00	COOLER		1
	26	F140223-00	WATER TANK RUBBER		1

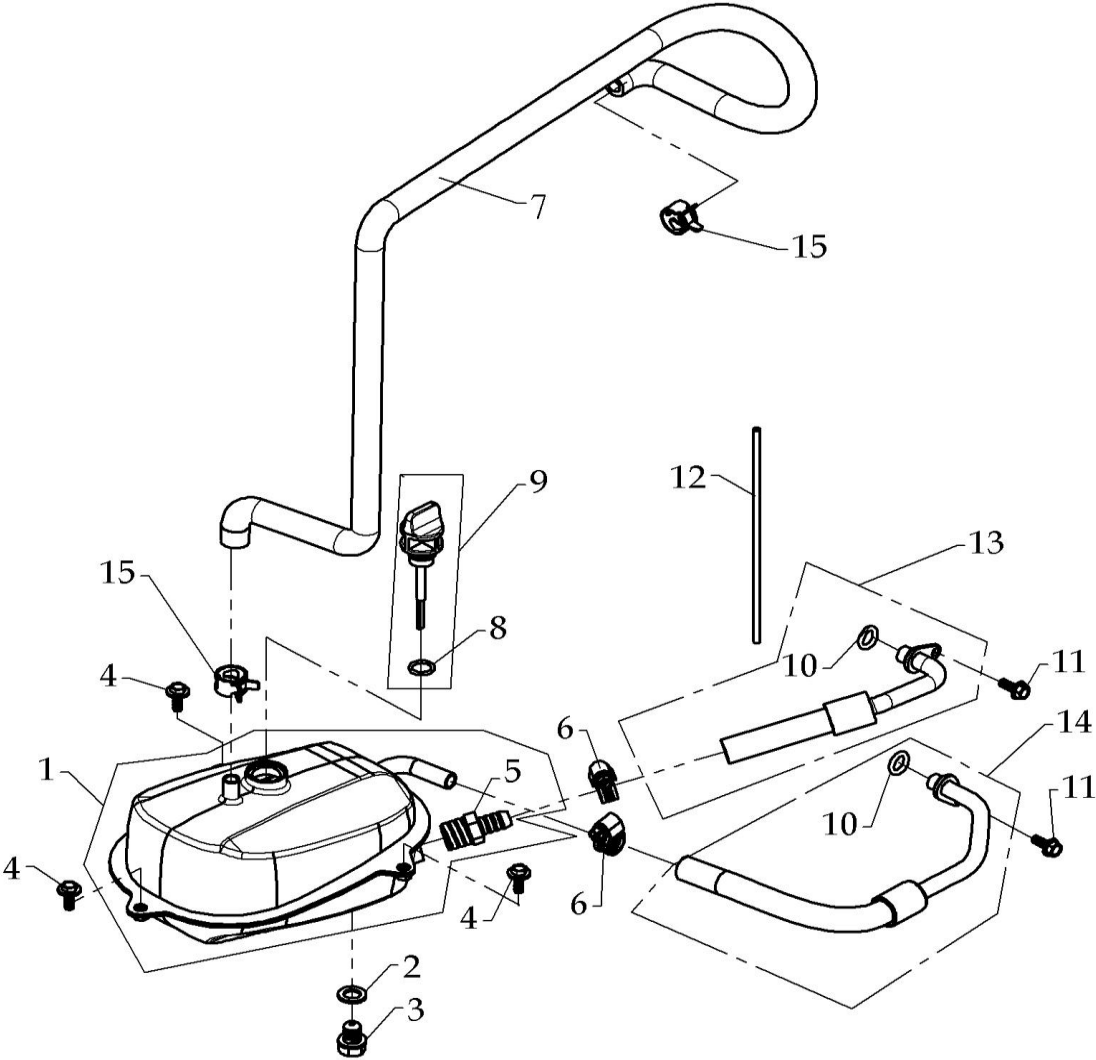
# FUEL TANK



## FUEL TANK

Model	Item	Part no	Description	Specification	Quantity
	01	F150212-00	FULE TANK		1
	02	F140229-00	GASKET		1
	03	290-62201-00	FUEL PUMP ASSY		1
	04	F150114-00	TUBE	Ø6XØ13X640L	1
	05	F150117-00	TUBE	Ø6XØ13X450L	1
	06	A050030-43	HEXAGONAL FLANGE BOLT	M6X1.0X20L	2
	07	F020196-00	FUEL TUBE	Ø12X0.8t	9
	08	F150223-00	FUEL FILTER ASSEMBLY		1
	09	F140190-00	FUEL VALVE		1
	10	F150138-00	TUBE		1
	11	A220026-00	TUBE		1
	12	F020188-00	STRAP		2
	13	A160007-00	STRAP	TCV-400	1
	14	A050031-41	PAN HEAD BOLT	M5X0.8X16L	2
	15	F020047-00	TUBE	250L	1
	16	F020046-00	TUBE	270L	1
	17	F020145-00	BREATHE TUBE	190L	1
	18	A050063-41	HEX BOLT	M6X1.0X20L	4
	19	F150214-48	BRACKET		1
	20	F140030-00	FUEL TANK CAP		1
	21	F020197-00	FUEL TUBE	9.2X0.6	2
	22	A220010-00	FUEL TUBE	Ø11X8X0.7t	1

OIL TANK

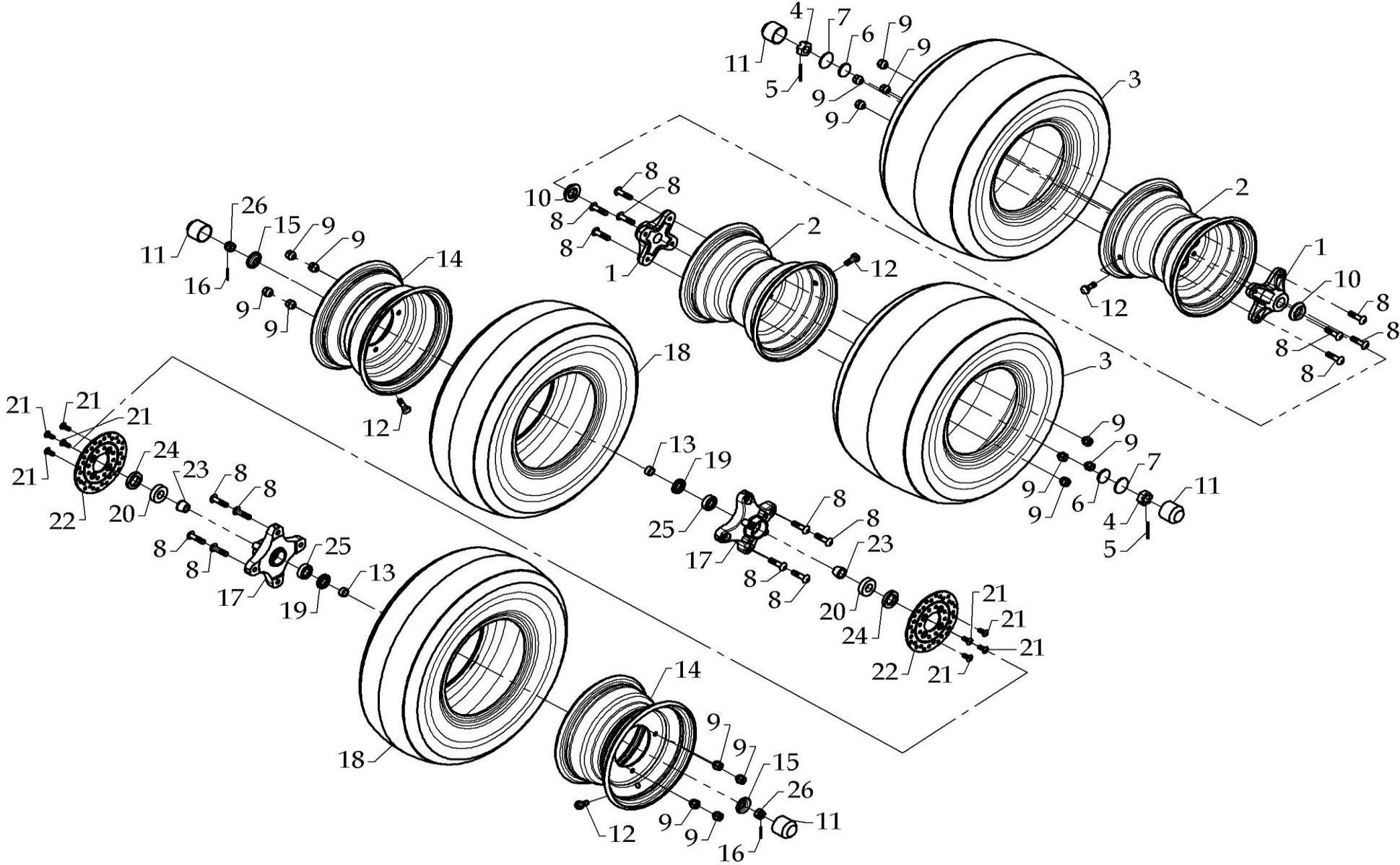


**OIL TANK**

<b>Model</b>	<b>Item</b>	<b>Part no</b>	<b>Description</b>	<b>Specification</b>	<b>Quantity</b>
	01	F150054-50	OIL TANK		1
	02	A080052-00	PLAIN WASHER	Ø12.2XØ20X2t	1
	03	A050071-41	DRAINAGE PLUG	M12X1.5X15L	1
	04	A050022-41	HEX BOLT	M6X1.0X18L	3
	05	F150056-00	OIL FILTER	#40	1
	06	F150127-41	TUBE CLIP	Ø13-26mm	2
	07	F150135B00	TUBE	Ø12XØ20X1230L	1
	08	A040005-00	O RING	P14	1
	09	E020074-00	OIL LEVEL GAUGE		1
	10	A040027-00	O RING	Ø12XØ3.6	2
	11	A050024-41	HEXAGONAL FLANGE BOLT	M6X1.0X16L	2
	12	F150116-00	TUBE	Ø6XØ10X350	1
	13	F150136-01	OIL TUBE	Ø12xØ19	1
	14	F150213-00	OIL TUBE	Ø12xØ19	1
	15	A220020-41	TUBE CLIP	Ø17x12X1.0t	2



WHEEL



**WHEEL**

<b>Model</b>	<b>Item</b>	<b>Part no</b>	<b>Description</b>	<b>Specification</b>	<b>Quantity</b>
	01	F150006-53	SHAFT CONNECTER		2
	02	F150002-49	RIM	9X8.5	2
	03	F150009-01	TIRE	20X11-9"	2
	04	A060058-42	CADTLE NUT	M20 X1.5	2
	05	A070031-41	COTTER PIN	Ø3.5X45L	2
	06	A080091-41	PLAIN WASHER	Ø21XØ34X4t	2
	07	A080092-41	PLAIN WASHER	Ø20.2XØ40X2.5t	2
	08	A050208-41	BOLT	M10X1.25X40L	16
	09	A060061-41	LOCK NUT	M10X1.25	16
	10	F150032-44	SPACER		2
	11	F020153-00	RUBBER CAP		4
	12	F020154-00	RIM VALVE		4
	13	A090027-45	SPACER	Ø15XØ20X10.5t	2
	14	F150001-49	RIM	10X5.5	2
	15	F020478-42	SEAT, RUBBER CAP		2
	16	A070002-41	COTTER PIN	Ø3.2X32L	2
	17	F150005A53	SHAFT CONNECTER		2
	18	F150008-01	FRONT WHEEL	21X7-10"	2
	19	A030016-00	SEAL	TC 20X35X7	2
	20	A010025-04	SEALED BEARING	6004LU	2
	21	A050183-41	FHSC	M8X1.25X17L,防鬆膠	8
	22	F150003A00	DISK,BRAKE	Ø160	2
	23	F150004-41	SPACER		2
	24	A030029-00	SEAL	TCY 28X42X7t	2
	25	A010021-04	BEARING	6202LU	2
	26	A060004-42	CASTLE NUT	M14X1.5-II	2



## ELECTRIC SYSTEM

Model	Item	Part no	Description	Specification	Quantity
	01	A190061-00	STARTER RELAY		1
	02	F170042-50	BRACKET, STARTER RELAY		1
	03	A050043-41	PANHEAD SCREW	M6X1.0X12L	1
	04	A180066-00	RELAY CONNECTOR CABLE		1
	05	A190092-00	FLASH RELAY		1
	06	A190083-00	HORN		1
	07	A050024-41	HEXAGONAL FLANGE BOLT	M6x1.0x16L	11
	08		IGNITION COIL	see engine parts manual	1
	09		CDI	see engine parts manual	1
	10	A190088-00	REGULATION		1
	11	A190062-00	BATTERY	14Ah	1
	12	A180079-00	DIRECTIONAL SIGNAL	(FL/RR)	1
	13	A180078-00	DIRECTIONAL SIGNAL	(FR/RL)	1
	14	A060010-41	HEXAGONAL FLANGE NUT	M10x1.25	2
	15	A180080-00	HEADLIGHT		1
	16	F150204-50	HEADLIGHT BRACKET, UP		2
	17	F150205-50	HEADLIGHT BRACKET, DOWN		2
	18	A130018-43	TAPPING SCREW	5mmx12L	4
	19	F150102A00	MAIN CABLE ASSY'		1
	20	F030044-00	TAILLIGHT	CE	1
	21	A130003-00	TAPPING SCREW	4mmx10L	4
	22	F150155-00	TOOL KIT		1
	23	A930004-00	RUBBER STRIP		1
	24	A180049-00	BULB	12V-5W,CE	1
	25	A180055-00	BULB	12V-35/35W HIS(E-Mark)	1
	26	A180053-00	BULB	P21/5W(E-Mark)	1
	27	F150238-00	LEAD,STARTER MOTOR		1
	28	F150239-00	WIRE,NOGETIVE POLE		1

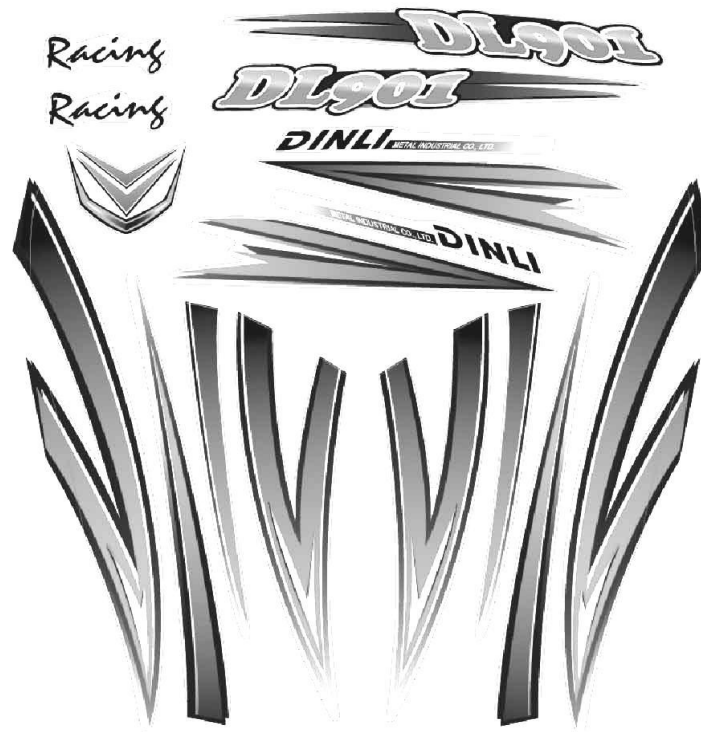
# STICKERS



3



2



1

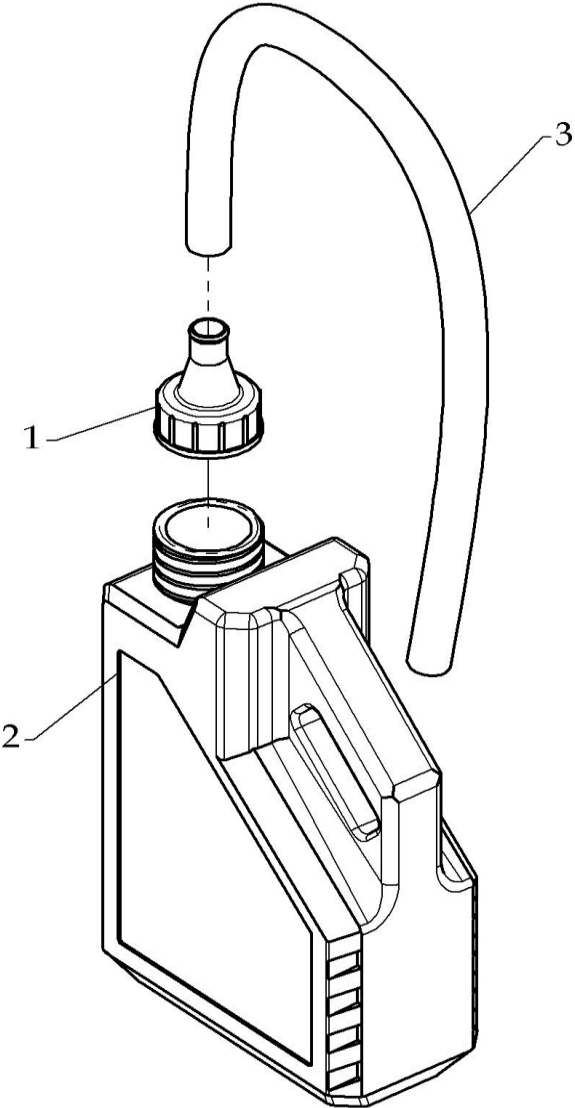


4

**STICKERS**

<b>Model</b>	<b>Item</b>	<b>Part no</b>	<b>Description</b>	<b>Specification</b>	<b>Quantity</b>
	01	A990228-98	STYLING STICKERS		1
	02	A990234-00	STICKER, TIRE PRESSURE		1
	03	A990214-00	STICKER, WARNING SIGN		1
	04	A990210-00	STICKER, RESERVOIR		1

COOLING WATER



**COOLING WATER**

<b>Model</b>	<b>Item</b>	<b>Part no</b>	<b>Description</b>	<b>Specification</b>	<b>Quantity</b>
	01	F140262-00	TULL CAP		1
	02	F150203-00	COOLANT(BOTTLED)	2L	2
	03	F140264-00	TUBE	Ø15xØ18x680L	1