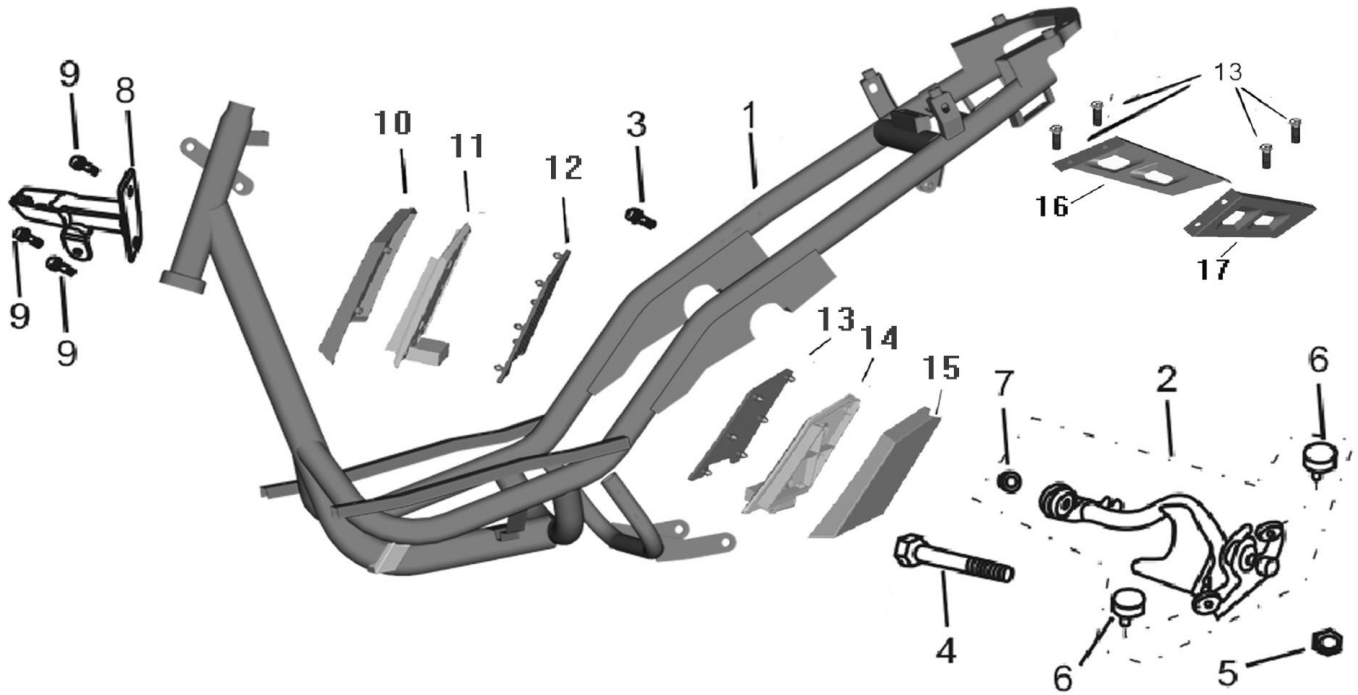


ARDOUR JJ125T-23 PARTS LIST

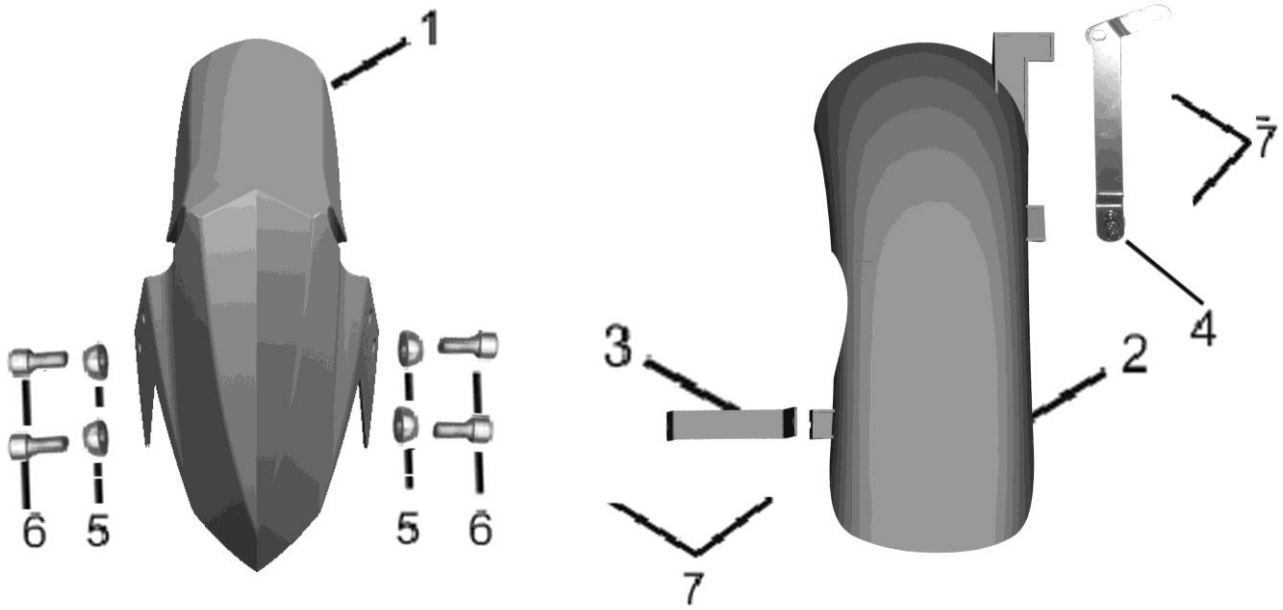


NO.	PART CODE	DESCRIPTION	QTY
1	50100-GP10-0000B	FRAME BODY(50CC 4T)	1
1	50100-GP10-0000A	FRAME BODY(50CC 2T)	1
1	50100-GP10-0000C	FRAME BODY(125CC)	1
2	50350-GP10-000A	HANGER OF ENGINE(50CC 2T)	1
2	50350-GP10-000B	HANGER OF ENGINE(50CC 4T)	1
2	50350-GP10-000C	HANGER OF ENGINE(125CC)	1
3	92301-10050	BOLT FLANGE SH	2
4	90117-GP20-9000	FLANGE BOLT M10×1.25×235	1
5	95401-10000	NUT U FLANGE	1
6	50352-GT10-0000	CUSHION OF ENGINE HANGER	2
7	50356-GT10-0000	BUSH,ENGINE HANGER	2
8	64315-GP10-0000	BRACKET,COVER ASSY FR GRILL	1
9	92301-06014	BOLT FLANGE SH	2
10	64317-GP10-0000	COVER RIGHT FOOTREST	1
11	5071A-GP10-0000	RIGHT FOOTREST	1
12	50720-GP10-0000	RUBBER RIGHT FOOTREST	1
13	50730-GP10-0000	RUBBER LEFT FOOTREST	1
14	5071B-GP10-0000	LEFT FOOTREST	1
15	64318-GP10-0000	COVER LEFT FOOTREST	1

16	50911-GP10-0000	STAY RIGHT FENDER RR	1
17	50912-GP10-0000	STAY LEFTFENDER RR	1

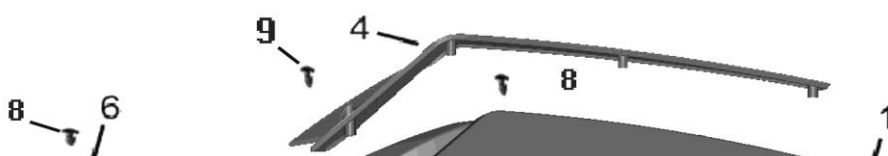
1

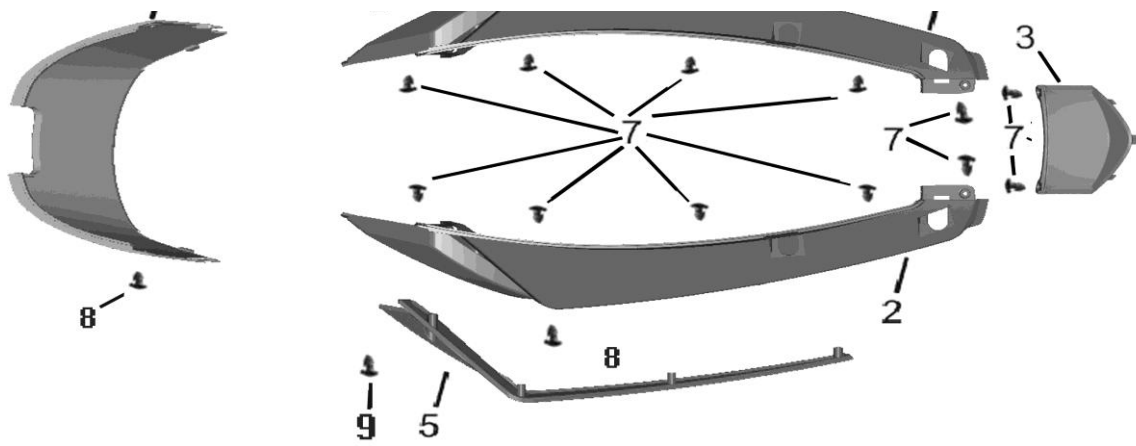
FENDER



NO.	PART CODE	DESCRIPTION	QTY
1	61100-GP10-0000OR	FRONT FENDER	1
2	80100-GP10-000A	FENDER RR TIRE(2T)	1
2	80100-GP10-000B	FENDER RR TIRE(4T-50CC)	1
2	80100-GP10-000C	FENDER RR TIRE(4T-125CC)	1
3	80102-GP10-0000	LEFT BRACKET,FENDER RR TIRE	1
4	80101-GP10-0000	RIGHT BRACKET,FENDER RR TIRE	1
5	90303-GP10-9000	WASHER SPECIAL M6	4
6	92501-06020-09	BOLT SPECILA 6*20	4
7	92301-06016	BOLT FLANGE SH	4

2

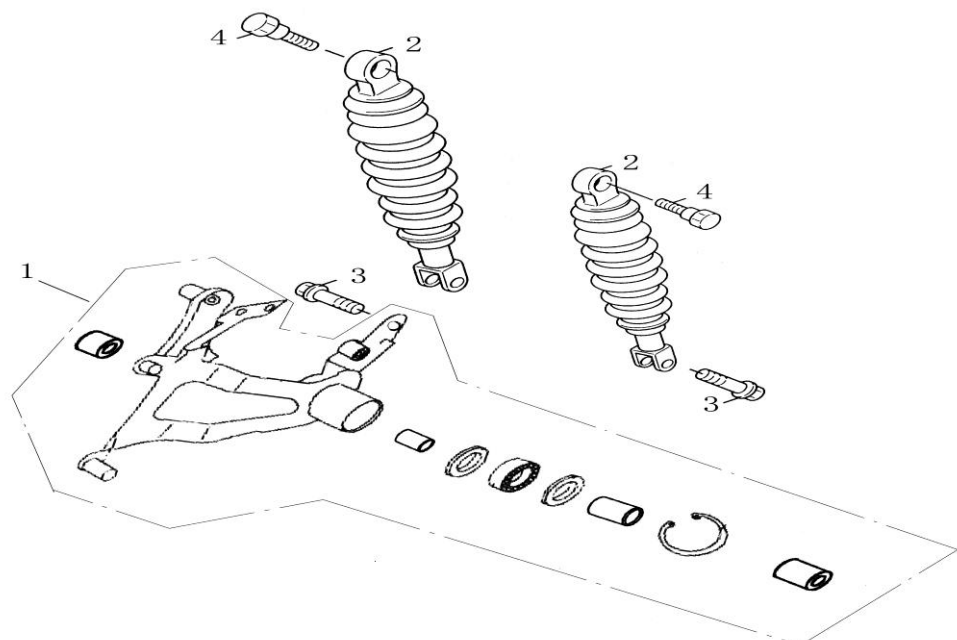




NO.	PART CODE	DESCRIPTION	QTY
1	83500-GP10-0000OR	COVER R BODY	1
2	83600-GP10-0000OR	COVER L BODY	1
3	83750-GP10-0000	COVER RR CENTER	1
4	83610-GP10-0000OR	DECORATED BOARD,COVER R BODY	1
5	83510-GP10-0000OR	DECORATED BOARD,COVER L BODY	1
6	80151-GP10-0000	COVER CENTER	1
7	93401-04010	SCREW TAPPING	12
8	93401-04016	SCREW TAPPING	2
9	93401-04016	SCREW TAPPING	2

3

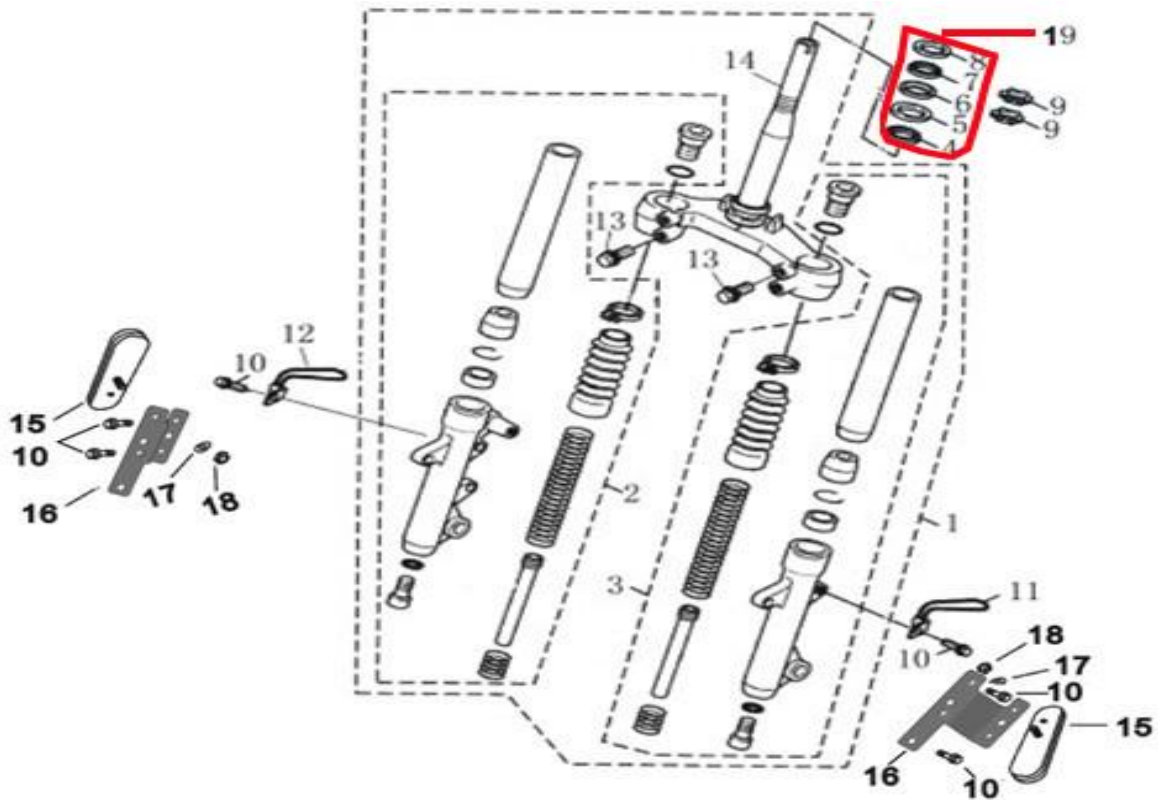
REAR SHOCK ABSORBER



NO.	PART CODE	DESCRIPTION	QTY
1	52000-GP10-000A	RR.ARM COMP.(50CC 2T)	1
1	52000-GP10-000B	RR.ARM COMP.(50CC 4T)	1
1	52000-GP10-000C	RR.ARM COMP.(125CC)	1
2	52400-GP10-000A	RR.SHOCK ABSORBER ASSY.(50CC 2T)	2
2	52400-GP10-000B	RR.SHOCK ABSORBER ASSY.(50CC 4T)	2
2	52400-GP10-000C	RR.SHOCK ABSORBER ASSY.(125CC)	2
3	92001-GP10-9000	BOLT HEX 8*27	2
4	92301-10040	BOLT FLANGE SH	2

4

FRONT FORK

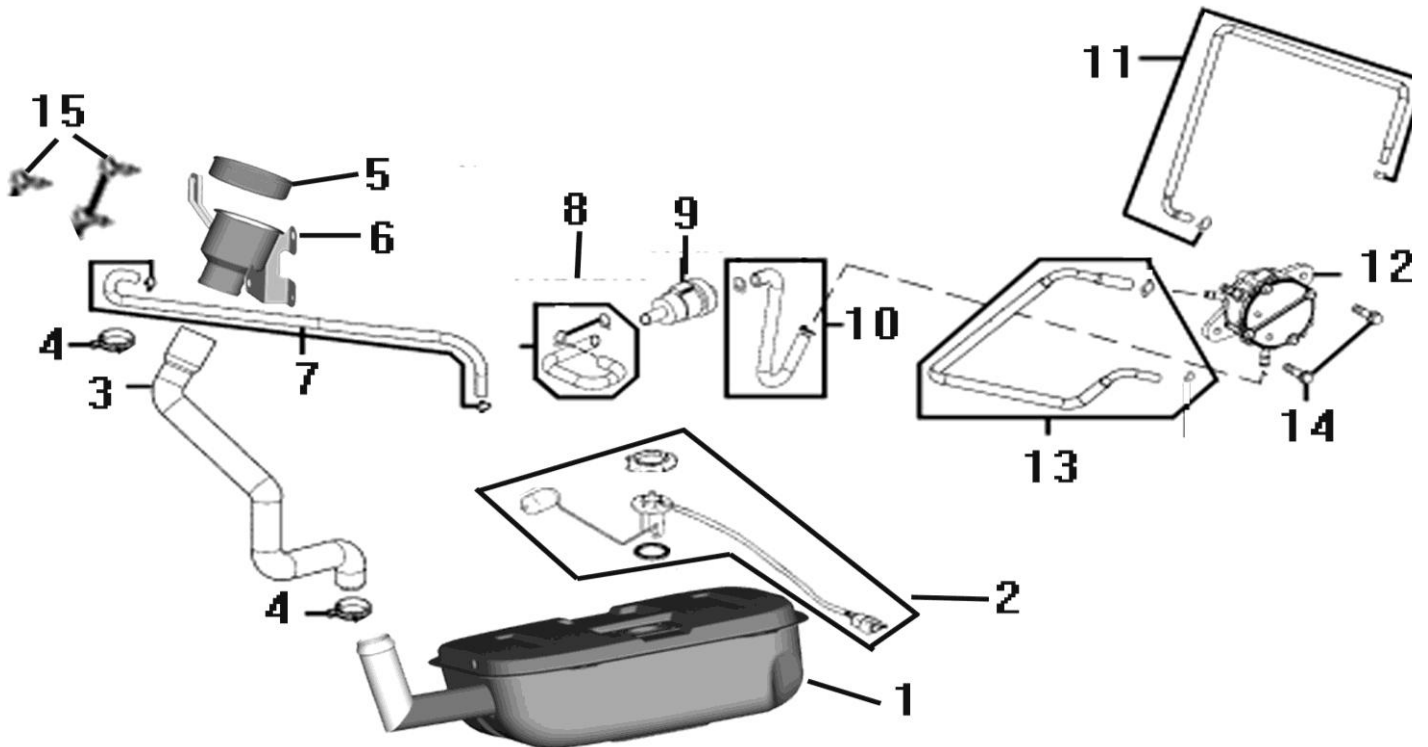


NO.	PART CODE	DESCRIPTION	QTY
1	51000-GP10-0000	FR.FORK ASSY.	1
2	51400-GP10-0000	R.FR.FORK ASSY.	1
3	51500-GP10-0000	L.FR.FORK ASSY.	1
4	96211-08000-000	BALL ASSY.,LOWER	17

5	53221-GP10-0000	BOWL 2	1
6	53222-GP10-0000	BOWL 2	1
7	96211-05000-000	BALL ASSY.,UPPER	22
8	53223-GP10-0000	BOWL 1	1
9	50306-GP10-0000	TOP NUT,STEERING STEM	2
10	92301-06012	FLANGE BOLT M6*12	2
11	53156-GP10-0000	CLAMP	1
12	53157-GP10-0000	FUEL LINE CLIP,DISK BRAKE	1
13	92301-08042	HEXAGONAL BOLT M8*40	4
14	53200-GP10-0000	STEERING STEM	1
15	33742-GP10-0000	FRONT REFLECTOR	2
16	33743-GP10-0000	BRACKET,FRONT REFLECTOR	2
17	95801-06000	WASHER	2
18	95101-06000	NUT M6	2
19	53220-GP10-0000	STEERING bearing	1

5

FUEL TANK

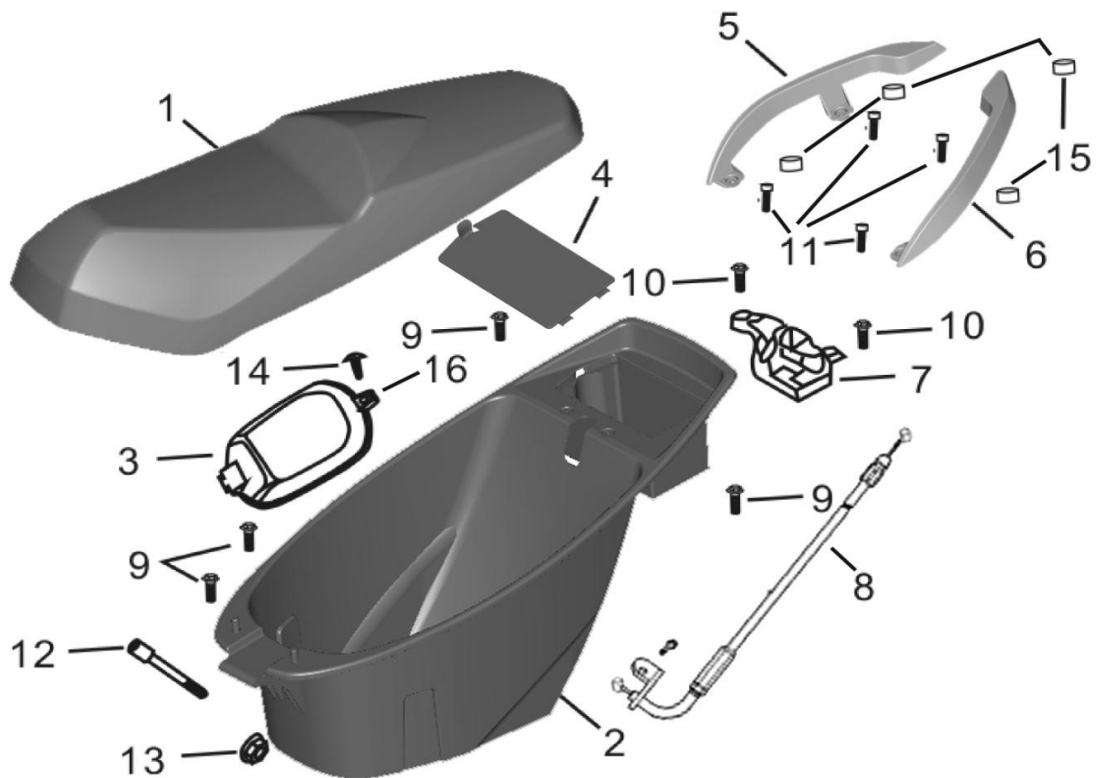


NO.	PART CODE	DESCRIPTION	QTY
-----	-----------	-------------	-----

1	17500-GP10-0000	FUEL TANK	1
2	3780A-GP10-0000	FUEL SENSOR ASSY	1
3	17502-LAD9-9000	TUBE FUEL	1
4	90656-GP10-9110	BAND HOSE	2
5	17623-GP10-0000	RUBBER FUEL FILLER	1
6	17504-GP10-0000	PIPE COMP FUEL FILLER	1
7	17689-GP10-0000	TUBE ASSY FILLER	1
8	16911-GP10-0000	FUEL TUBE A	1
9	1691A-GT10-0000	STRAINER ASSY FUEL	1
10	16912-GP10-0000	FUEL TUBE B	1
11	16913-GP10-0000	FUEL TUBE C	1
12	16700-GP10-0000	FUEL PUMP ASSY	1
13	1768A-GP10-0000	TUBE ASSY VACUUM	1
14	92301-06012	BOLT FLANGE SH	2
15	93401-04016	SCREW TAPPING	3

6

SEAT ASSEMBLY

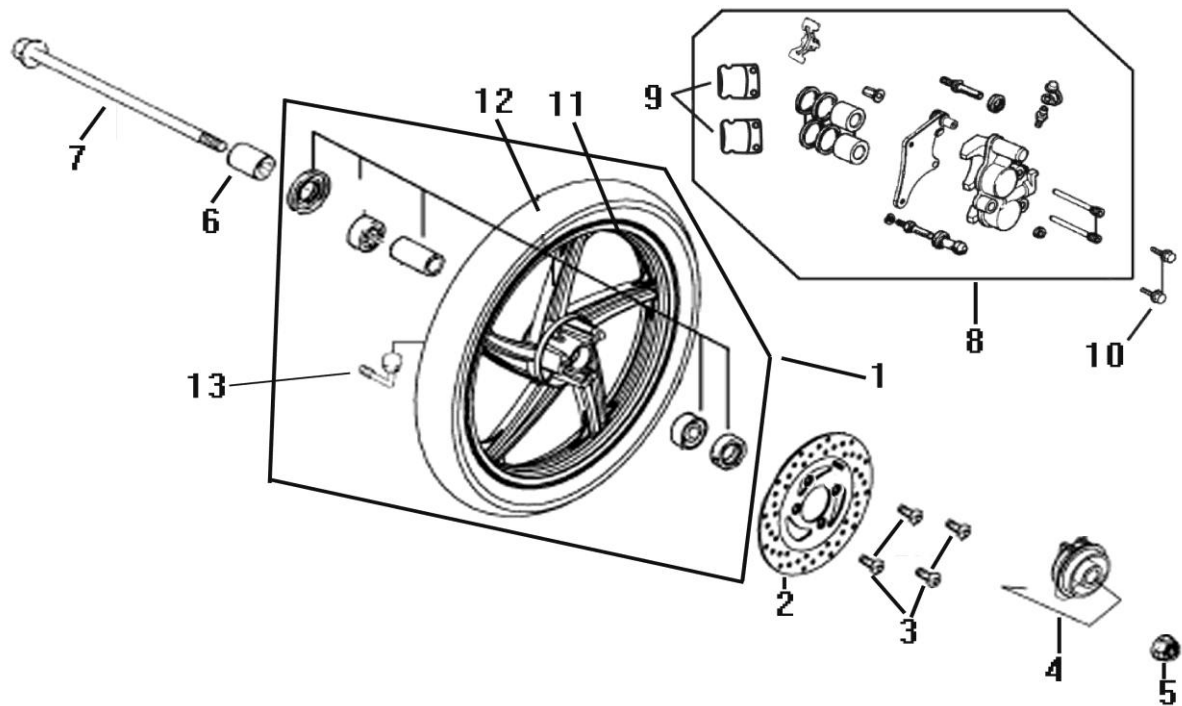


NO.	PART CODE	DESCRIPTION	QTY
1	77200-GP10-0000	SEAT	1
2	81260-GP10-0000	LUGGAGE BOX ASSY	1
3	81251-GP10-0000	LID CARB MAINT	1
4	50326-GP10-0000	COVER BATTERY	1

5	8121A-GP10-0000	RIGHT REAR HANDRAIL	1
6	8121B-GP10-0000	LEFT REAR HANDRAIL	1
7	77235-GP10-0000	LOCK BASE OF SEAT	1
8	77240-GP10-0000	CABLE OF SEAT LOCK	1
9	92301-06014	BOLT FLANGE SH	4
10	92301-06012	BOLT FLANGE SH	2
11	92501-08025-03	BOLT SPECILA 8*25	4
12	77210-GP10-0000	SEAT PIN	1
13	95101-06000	NUT FANGE	1
14	92701-06014	SCREW SPECIAL	1
15	81206-GP10-0000	COLLAR,CARRIER ASSY	1
16	90701-GT10-9000	NUT CLIP	1

7

FRONT WHEEL

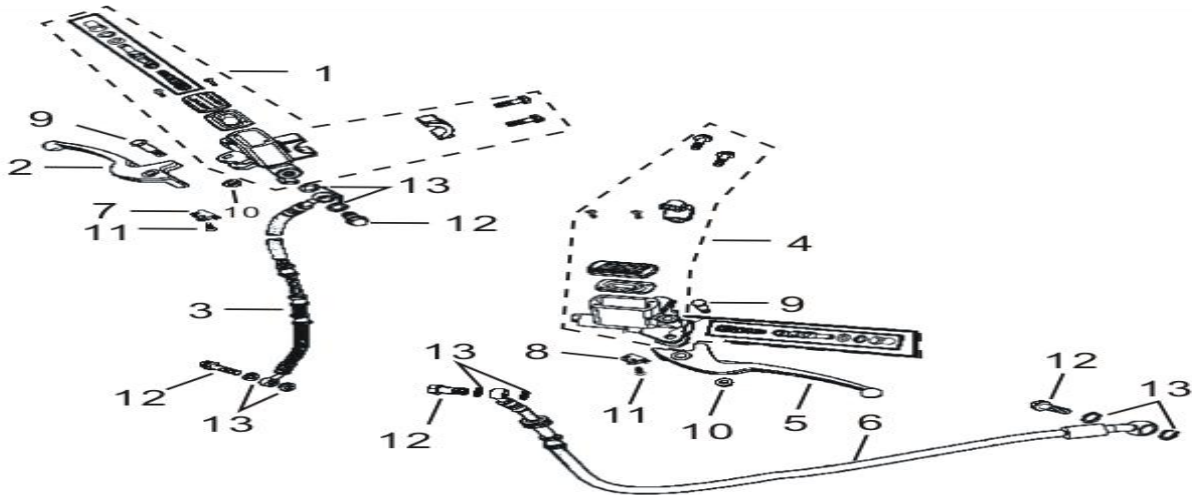


NO.	PART CODE	DESCRIPTION	QTY
1	44700-GP10-0000	FRONT WHEEL	1
2	45351-GP10-0000	DISK FR BRAKE	1
3	90105-GT10-9000	BOLT FR DISK 8*24	3
4	44800-GP10-0000	GEAR BOX ASSY FOR CALCULATE SPEED	1
5	95401-12000	NUT U FLANGE	1
6	44311-GP10-0000	COLLAR RR AXLE	1
7	44301-GP10-0000	AXLE FR WHEEL	1

8	45200-GP10-0000	CALIPER ASSY FR	1
9	45150-GP10-0000	RR.BRAKE PAD	1
10	92301-08035	BOLT FLANGE SH	2
11	44650-GP10-0000	FRONT RIM	1
12	44710-GP10-0000	FRONT TIRE	1
13	42753-GP10-0000	VALVE RIM	1

8

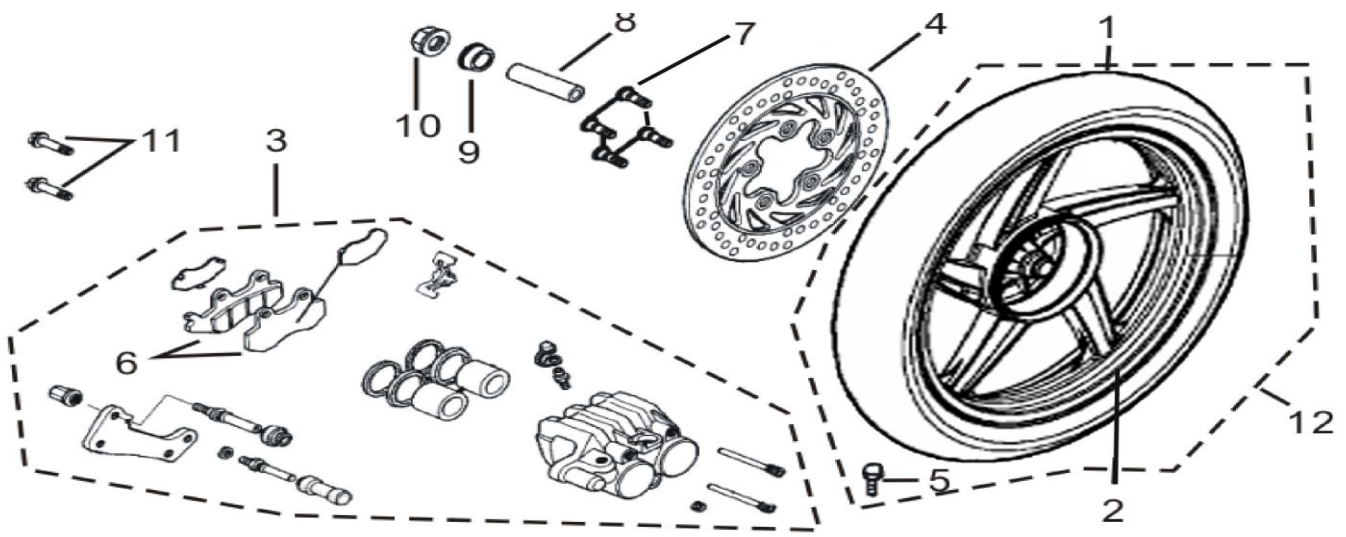
BRAKE SYSTEM



NO.	PART CODE	DESCRIPTION	QTY
1	45530-GP10-0000	CYLINDER SET FR MASTER	1
2	53175-GP10-0000	LEVER R	1
3	45126-GP10-0000	HOSE ASSY FR BRAKE	1
4	43530-GP10-0000	CYLINDER SET RR MASTER	1
5	53178-GP10-0000	LEVER L	1
6	43126-GP10-0000	HOSE ASSY RR BRAKE	1
7	35340-GP10-0000	SWITCH ASSY FR BRAKE	1
8	35350-GP10-0000	SWITCH ASSY RR BRAKE	1
9	90114-GP10-0000	BOLT HANDLE LEVER	2
10	94050-06000-000	FLANGE NUT M6	2
11	93893-04012-000	SCREW WASHER M4*12	2
12	90145-10022-000	OIL BOLT M10*22	4
13	90545-GP10-0000	WASHER,OIL BOLT	8

9

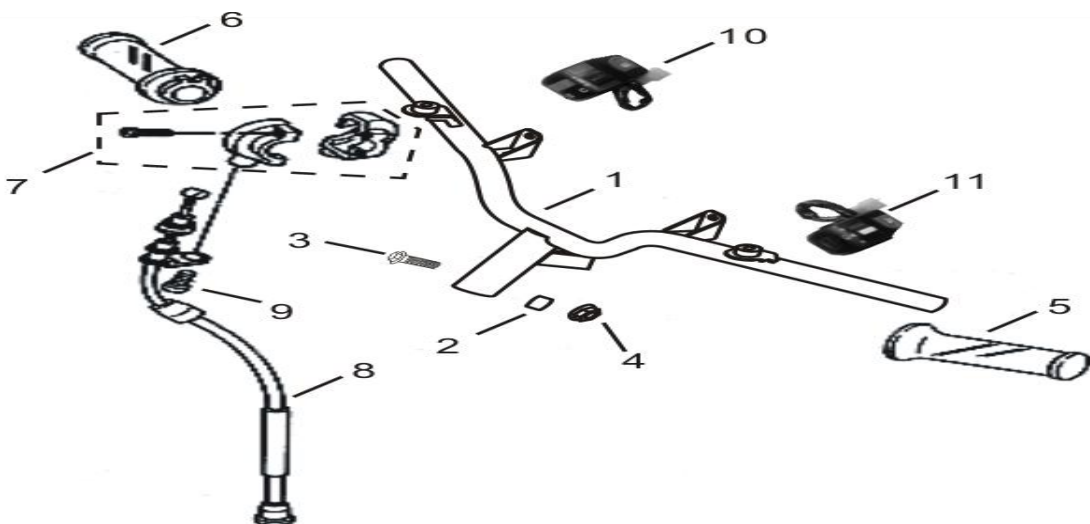
REAR WHEEL



NO.	PART CODE	DESCRIPTION	QTY
1	42710-GP10-0000	REAR TIRE	1
2	42601-GP10-000A	REAR RIM(50CC 2T)	1
2	42601-GP10-000B	REAR RIM(50CC 4T)	1
2	42601-GP10-000C	REAR RIM(125CC)	1
3	43100-GP10-0000	CALIPER ASSY RR	1
4	43351-GP10-0000	REAR BRAKE DISK	1
5	42753-GP10-0000	VALVE RIM	1
6	43150-GP10-0000	RR.BRAKE PAD	1
7	90105-GT10-9000	BOLT FR DISK 8*24	3
8	42311-GP10-0000	COLLAR RR AXLE A	1
9	42312-GP10-0000	COLLAR RR AXLE SIDE	1
10	95401-14000	NUT U FLANGE	1
11	92401-08012	BOLT FLANGE SH	2

10

HANDLE BAR

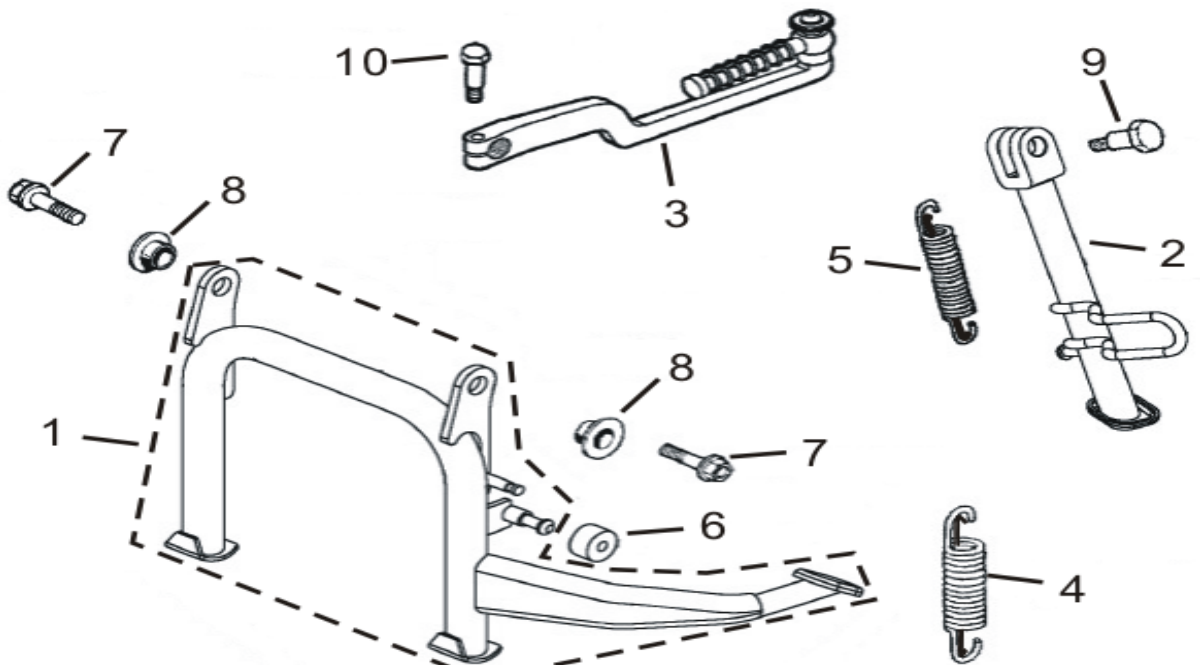




NO.	PART CODE	DESCRIPTION	QTY
1	53100-GP10-0000	HANDLE BAR	1
2	53125-GP10-0000	BUSH,HANDLE BAR	1
3	90106-GT10-9010	BOLT FLANGE 10*55	1
4	95401-10000	NUT U FLANGE	1
5	53166-GP10-0000	L.GRIP,HANDLE	1
6	53140-GP10-0000	THROTTLE GRIP,HANDLE	1
7	53160-GP10-0000	THROTTLE BRACKET	1
8	17910-GP10-000A	THROTTLE CABLE(50CC 2T)	1
8	17910-GP10-000B	THROTTLE CABLE(50CC 4T)	1
8	17910-GP10-000C	THROTTLE CABLE(125CC)	1
9	93500-05010-000	CROSS ROUNDHEAD SCREW M5*10	1
10	3515A-GP10-0000	SWITCH,HANDLEBAR R.	1
11	3520A-GP10-0000	SWITCH,HANDLEBAR L.	1

11

STAND ASSY

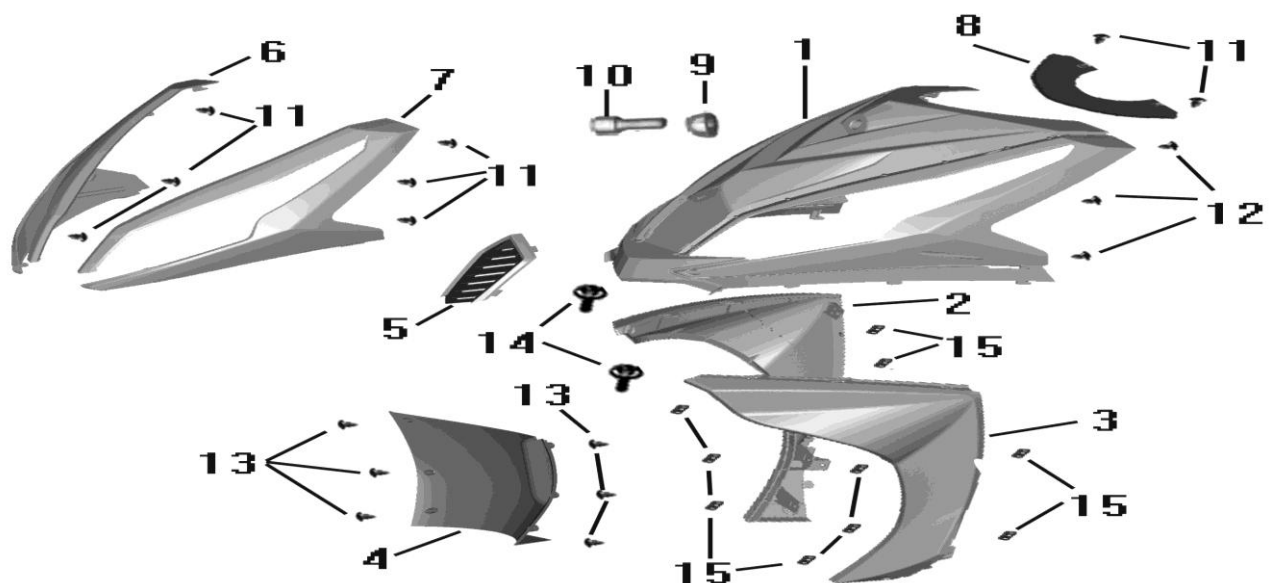


NO.	PART CODE	DESCRIPTION	QTY
1	5050A-GP10-000A	STAND ASSY MAIN(50CC 2T)	1
1	5050A-GP10-000B	STAND ASSY MAIN(50CC 4T)	1
1	5050A-GP10-000C	STAND ASSY MAIN(125CC)	1
2	50530-GP10-0000	BAR SIDE STAND	1

3	28300-GY57-000A	ARM ASSY KICK STARTER(50CC 2T)	1
3	28300-GY57-000B	ARM ASSY KICK STARTER(50CC 4T)	1
3	28300-GY57-000C	ARM ASSY KICK STARTER(125CC)	1
4	50550-GP10-000A	SPRING OF MAIN STAND(50CC 2T)	1
4	50550-GP10-0000	SPRING OF MAIN STAND (50CC 4T&125CC)	1
5	95014-GP10-0000	SPRING OF SIDE STAND	1
6	50505-GP10-000A	RUBBER STOPPER MAIN(50CC 2T)	1
6	50505-GP10-000B	RUBBER STOPPER MAIN(50CC 4T)	1
6	50505-GP10-000C	RUBBER STOPPER MAIN(125CC)	1
7	95801-10025-000	FLANGE BOLT M10*25	2
8	50502-GP10-000A	COLLAR MAIN STAND(50CC 2T)	2
8	50502-GP10-000B	COLLAR MAIN STAND(50CC 4T)	2
8	50502-GP10-000C	COLLAR MAIN STAND(125CC)	2
9	90108-GP10-0000	SCREW SIDE STAND PIVOT	1
10	95701-06022-000	FLANGE BOLT M6*22	1

12

FRONT COVER

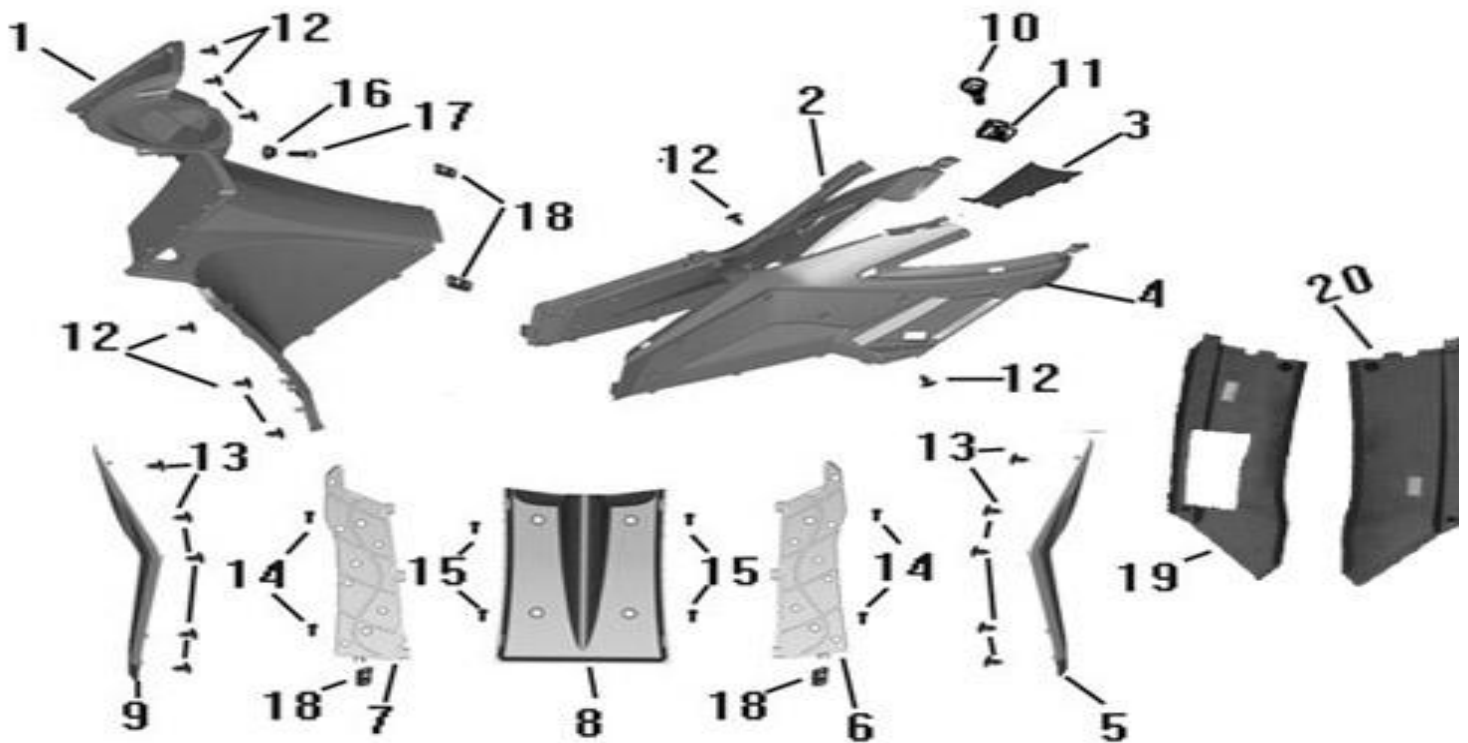


NO			Y
1	04302-GP10-0000	FRONT COVER	1
2	64303-GP10-0000OR	MOLD RIGHTFR	1
3	64304-GP10-0000OR	MOLD LEFT FR	1
4	64400-GP10-0000	FRONT FENDER INNER	1

5	64307-GP10-0000	DECORATED BOARD FRONT COVER	1
6	64315-GP10-0000OR	DECORATED BOARD R FRONT COVER	1
7	64316-GP10-0000OR	DECORATED BOARD L FRONT COVER	1
8	64302-GP10-0000	LID COVER FR	1
9	90303-GP10-9000	WASHER SPECIAL M6	1
10	92501-06020-09	BOLT SPECILA 6*20	1
11	93401-04012	SCREW TAPPING	8
12	93401-04016	SCREW TAPPING	6
13	93401-05016	SCREW TAPPING	6
14	92705-06016	SCREW SPECIAL	4
15	90601-GT10-9000	NUT SPING	10

13

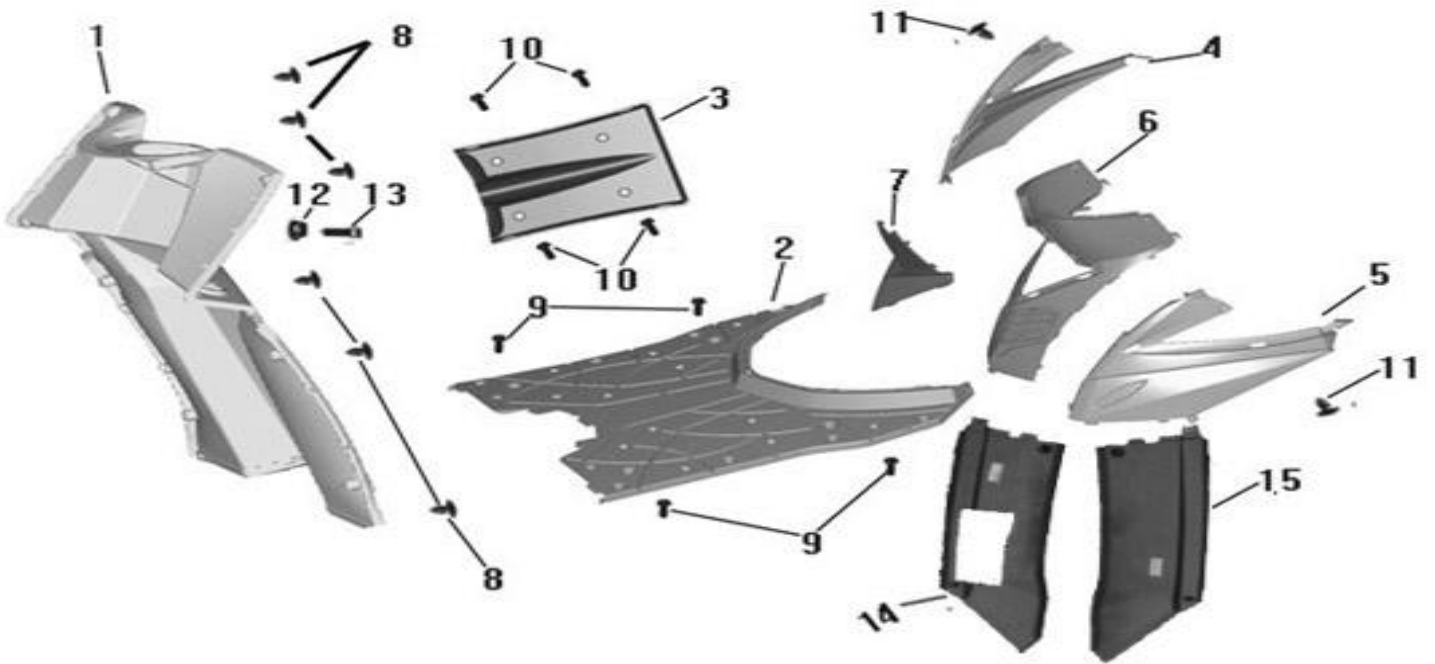
FLOOR PANEL---VANGUARD 125CC ARDOUR A



NO.	PART CODE	DESCRIPTION	QTY
1	81131-GP10-0000	LEG SHIELD	1
2	83520-GP10-0000	COVER R SIDE	1
3	83750-GP10-0000	COVER RR CENTER	1
4	83620-GP10-0000	COVER L SIDE	1
5	64312-GP10-0000	FLOOR PANEL LEFT GUARD PLATE	1
6	64320-GP10-0000	FLOOR R PANEL	1
7	64321-GP10-0001	FLOOR L PANEL	1
8	50613-GP10-0000	COVER UNDER	1
9	64311-GP10-0000	FLOOR PANEL RIGHT GUARD PLATE	1

10	93401-05016	SCREW TAPPING	2
11	90601-GT10-9000	NUT SPING	2
12	93401-04016	SCREW TAPPING	8
13	93401-04010	SCREW TAPPING	10
14	92301-06016	BOLT FLANGE SH	4
15	92301-06012	BOLT FLANGE SH	4
16	90303-GP10-9000	WASHER SPECIAL M6	1
17	92501-06020-09	BOLT SPECILA 6*20	1
18	90601-GT10-9000	NUT SPING	4
19	64306-GP10-00GR	SKIRT L SIDE(GREY)	1
20	64305-GP10-00GR	SKIRT R SIDE(GREY)	1

FLOOR PANEL---VANGUARD 125CC ARDOUR B

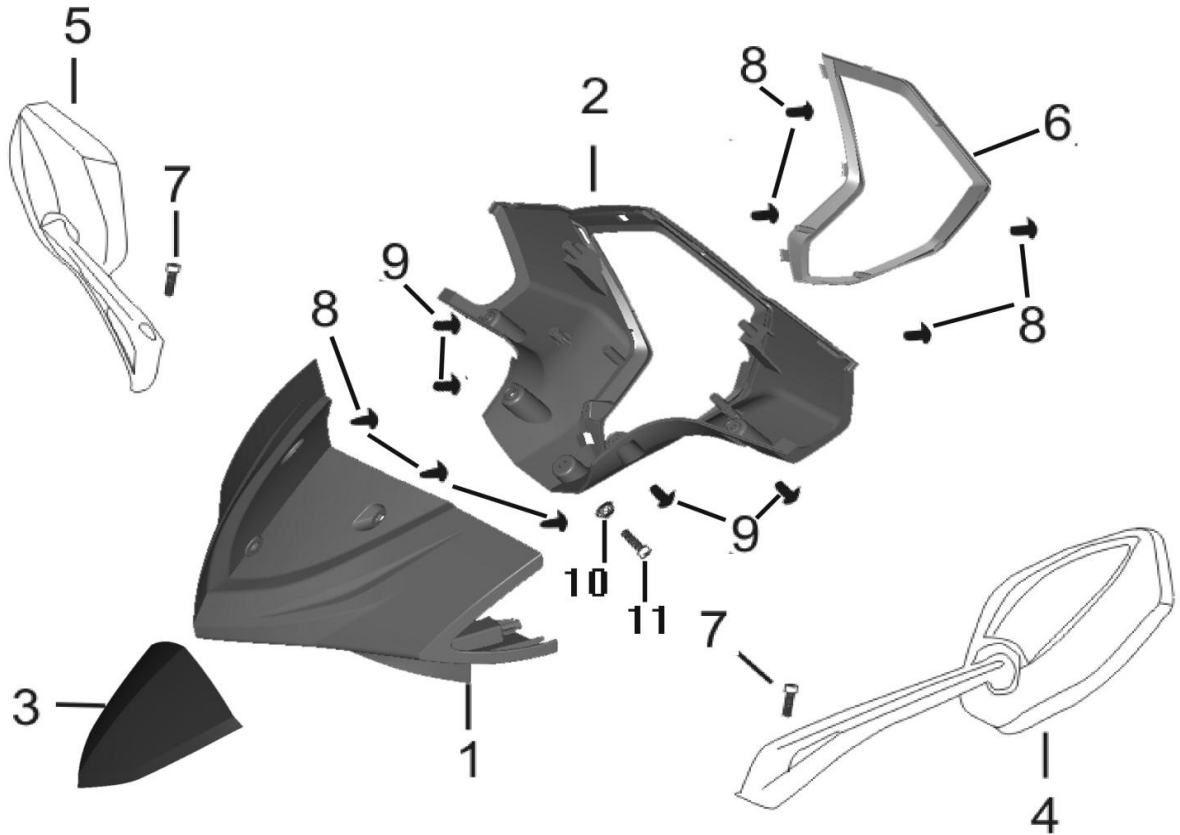


NO.	PART CODE	DESCRIPTION	QTY
1	81131-GP20-0000	LEG SHIELD	1
2	64320-GP20-0000	FLOOR R PANEL	1
3	50613-GP10-0000	COVER UNDER	1
4	83520-GP20-0000	COVER R SIDE	1
5	83620-GP20-0000	COVER L SIDE	1
6	64320-GP20-0000	COVER CENTER A	1
7	80151-GP20-0000	COVER CENTER B	1
8	93401-04016	SCREW TAPPING	6
9	92301-06016	BOLT FLANGE SH	4
10	92301-06012	BOLT FLANGE SH	4

11	93401-04012	SCREW TAPPING	2
12	90303-GP10-9000	WASHER SPECIAL M6	1
13	92501-06020-09	BOLT SPECILA 6*20	1
14	64306-GP10-00GR	SKIRT L SIDE(GREY)	1
15	64305-GP10-00GR	SKIRT R SIDE(GREY)	1

14

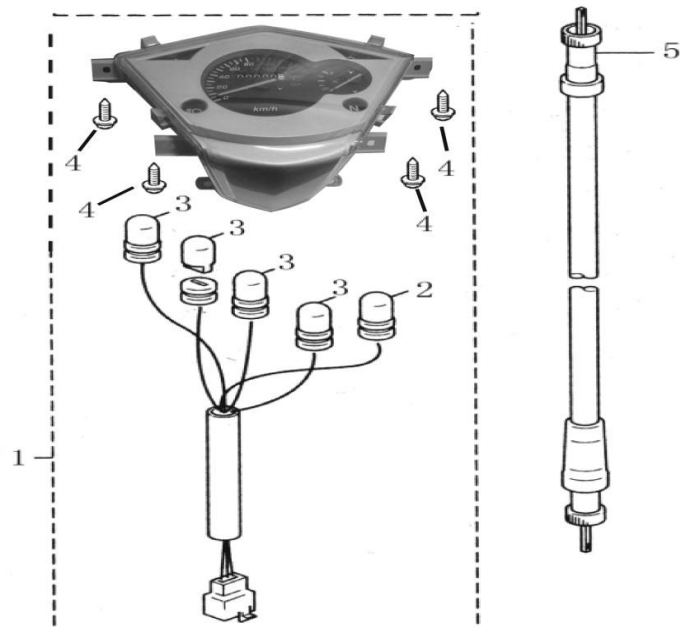
HANDLE BAR PANEL



NO.	PAR		QTY
1	53205-GP10-0000OR	COVER FR HANDLE(YELLOW940)	1
1	53205-GP10-0000BK	COVER FR HANDLE(BLACK920)	1
1	53205-GP10-0000WH	COVER FR HANDLE(WHITE925)	1
2	53206-GP10-0000	COVER RR HANDLE	1
3	53208-GP10-0000	DECORATED BOARD FR HANDLE	1
4	88120-GP10-0000	MIRROR ASSY L BACK	1
5	88110-GP10-0000	MIRROR ASSY R BACK	1
6	53209-GP10-0000	DECORATED BOARD RR HANDLE	1
7	92501-08040-03	BOLT SPECILA 8*40	2
8	93401-04010	SCREW TAPPING	4
9	93401-04016	SCREW TAPPING	4
10	90303-GP10-9000	WASHER SPECIAL M6	1
11	92501-06020-09	BOLT SPECILA 6*20	1

15

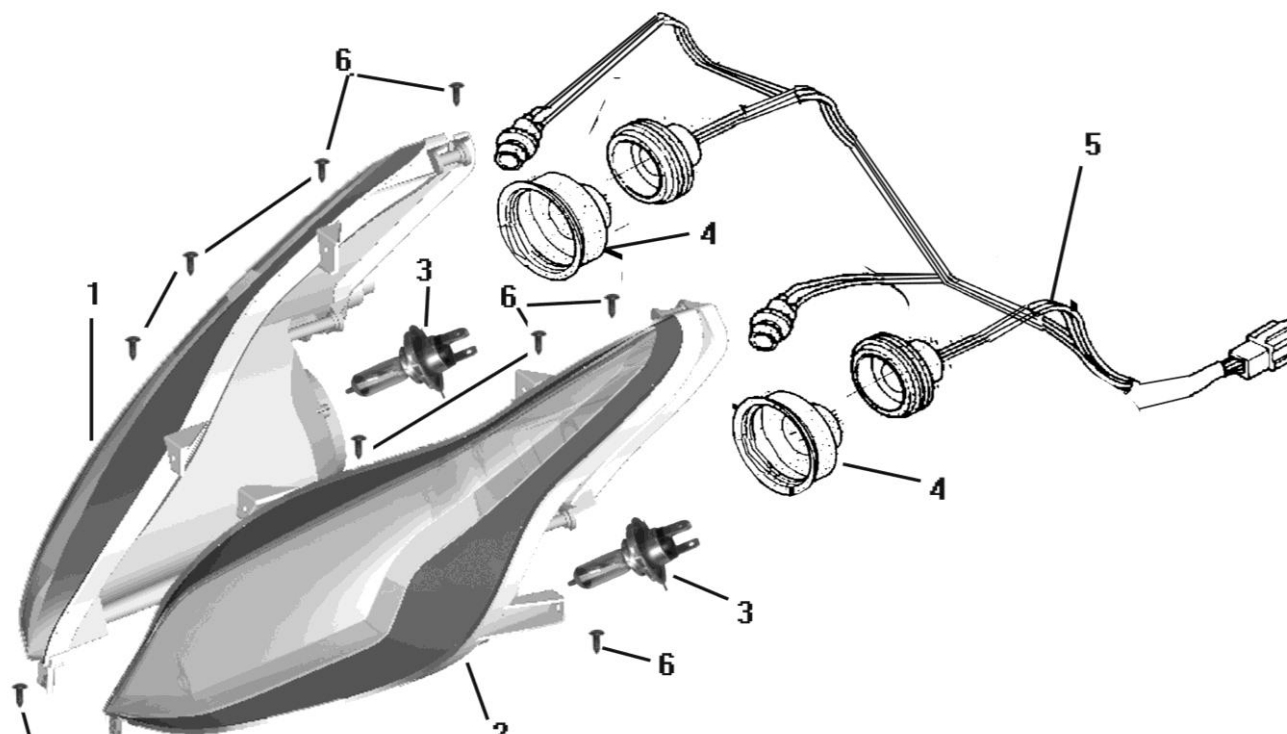
SPEEDOMETER



NO.	PART CODE	DESCRIPTION	QTY
1	37200-GP10-0000A	SPEEDOMETER ASSY.(50CC 2T)	1
1	37200-GP10-0000B	SPEEDOMETER ASSY.(50CC 4T)	1
1	37200-GP10-0000C	SPEEDOMETER ASSY.(125CC)	1
2	37272-GP10-0000	SIGNAL INDICATOR LIGHT 12V,3W	1
3	37271-GP10-0000	SIGNAL INDICATOR LIGHT 12V,3W	4
4	93401-04016	SCREW TAPPING	4
5	44831-GP10-0000	MILEAGE CABLE	1

16

HEADLIGHT

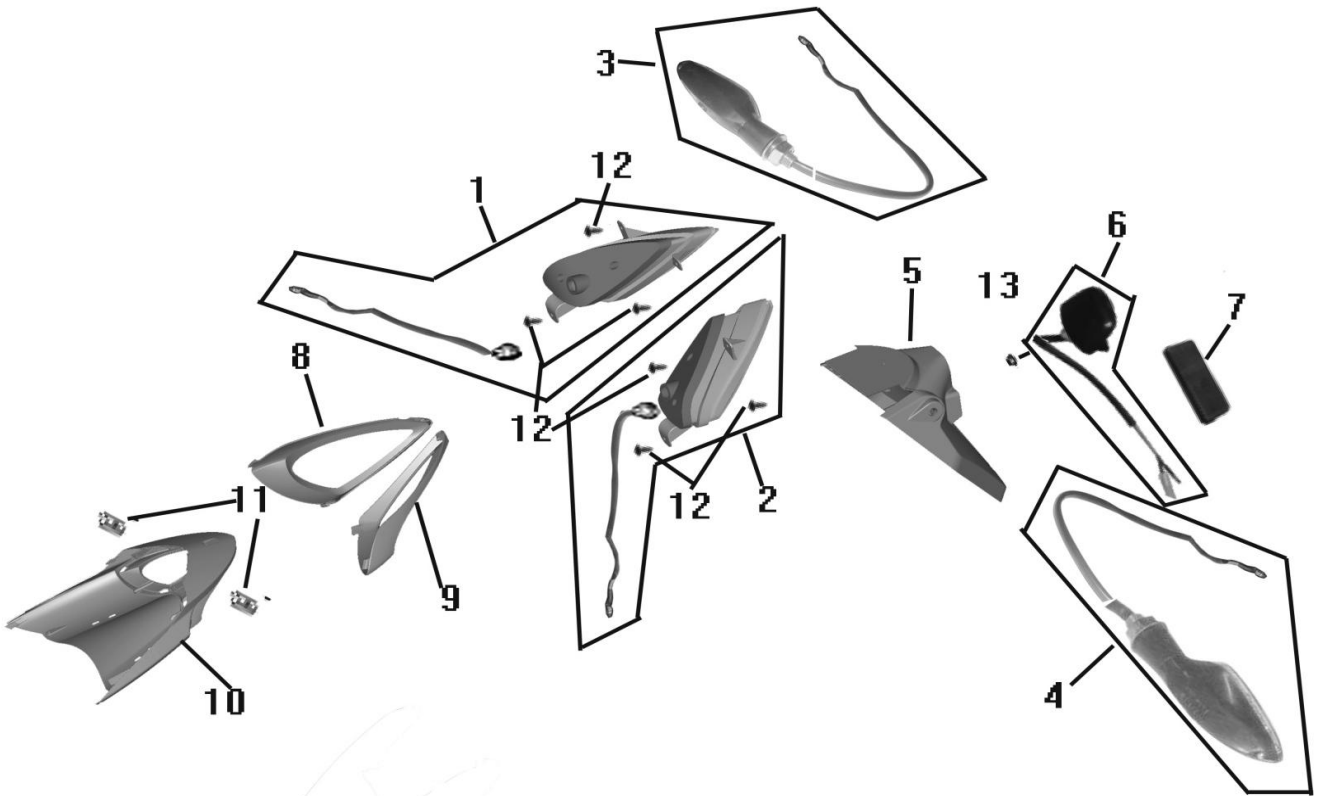


6

NO.	PART CODE	DESCRIPTION	QTY
1	33101-GP10-0000	RIGHT HEADLIGHT	1
2	33102-GP10-0000	LEFT HEADLIGHT	1
3	34901-GP10-0000	BULB OF HEADLIGHT 12V 35/35W	2
4	33120-GP10-0000	RUBBER BULB OF HEADLIGHT	1
5	33130-GP10-0000	SOCKET COMP	1
6	93401-04016	SCREW TAPPING	10

17

TAILLIGHT

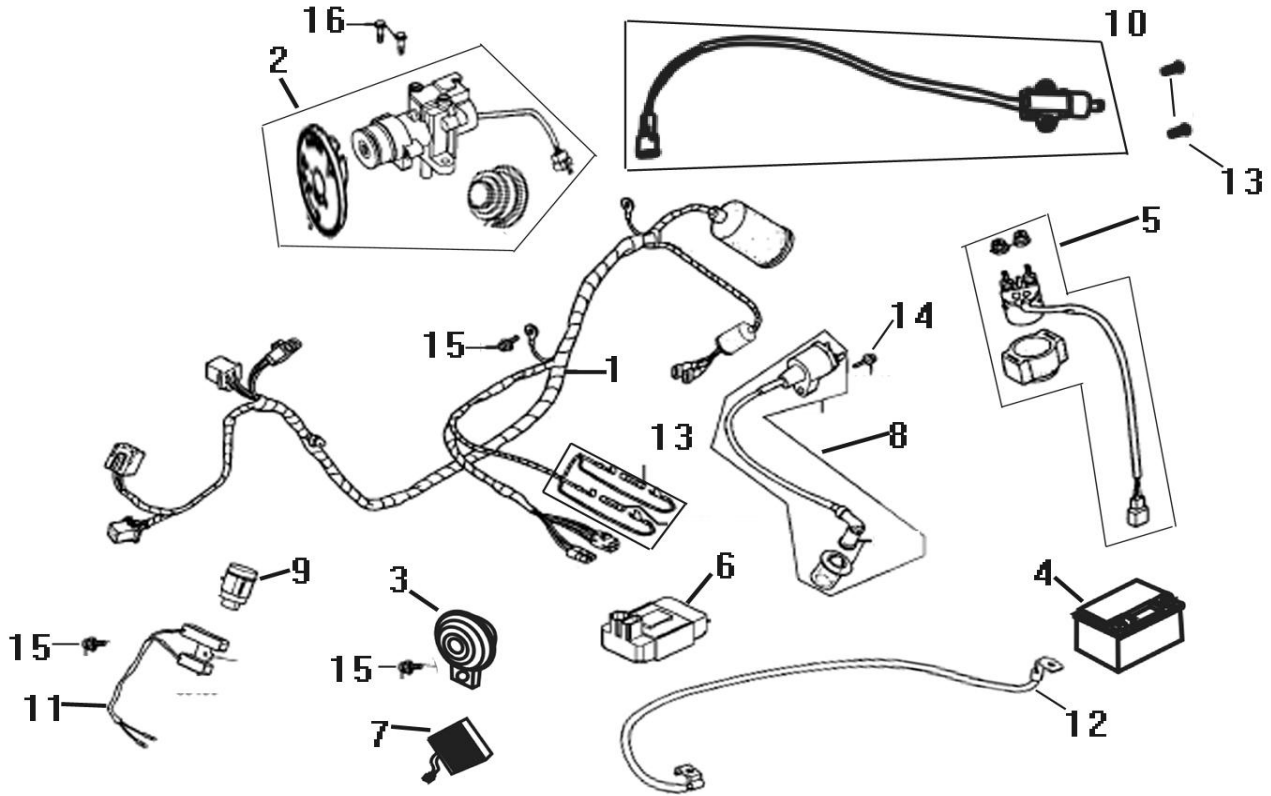


NO.	PART CODE	DESCRIPTION	QTY
1	33700-GP10-0000	RIGHT TAILLIGHT ASSY	1
2	33800-GP10-0000	LEFT TAILLIGHT ASSY	1
3	33600-GP10-0000	R.RR.TURNING LIGHT ASSY	1
4	33650-GP10-0000	L.RR.TURNING LIGHT ASSY	1
5	80105-GP10-0000	REAR FENDER	1
6	33750-GP10-0000	LICENSE PLATE LAMP	1
7	33741-GP10-0000	REAR REFLECTOR	1
8	33701-GP10-0000	DECORATED BOARD R TAILLIGHT	1
9	33702-GP10-0000	DECORATED BOARD L TAILLIGHT	1
10	33703-GP10-0001	FITTING SEAT OF TAILLIGHT	1
11	90601-GT10-9000	NUT SPING	2

12	93401-04016	SCREW TAPPING	6
13	95101-06000	NUT FANGE	1

18

ELECTRICAL SYSTEM

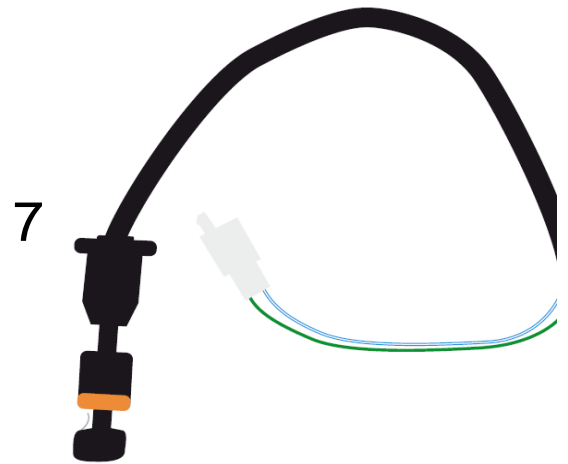
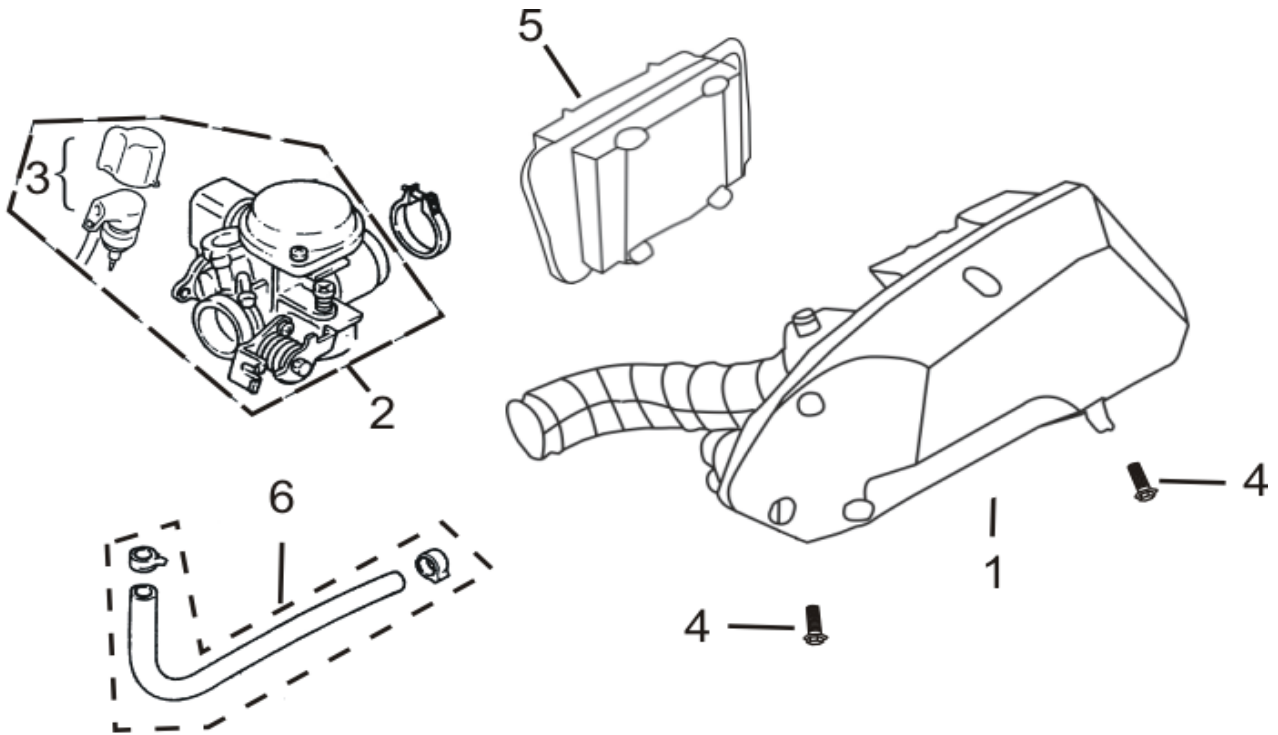


1	32100-GP10-000A	MAIN WIRE HARNESS(50CC 2T)	1
1	32100-GP10-000B	MAIN WIRE HARNESS(50CC 4T)	1
1	32100-GP10-000C	MAIN WIRE HARNESS(125CC)	1
2	35101-GP10-0000	MAIN LOCK ASSY	1
3	38110-GT0-0000	HORN	1
4	31500-GP10-0000	BATTERY	1
5	35850-GP10-0000	START RELAY	1
6	30400-GP10-0000A	CDI(50CC 2T) 25KMH	1
6	30400-GP10-0000A1	CDI(50CC 2T) 45KMH	1
6	30400-GP10-0000B	CDI (50CC 4T) 25KMH	1
6	30400-GP10-0000B1	CDI (50CC 4T) 45KMH	1
6	30400-GP10-0000C	CDI(125CC)	1
7	31600-GP10-0000	RECTIFIER	1
8	30510-GP10-000A	IGNITION COIL COMP. (50CC 2T)	1
8	30510-GP10-00BC	IGNITION COIL COMP. (50CC 4T AND 125CC)	1
9	38300-GP10-0000	FLASHER	1
10	35370-GP10-0000	KILL SWITCH	1

11	35400-GP10-000A	RESISTOR COMP (50CC 2T)	1
12	3241-GP10-0000	CATHODE LINE	1
13	98200-11000	FUSE 10A	2
14	90112-GT10-9000	BOLT FLANGE 5*22	1
15	92301-06012	BOLT FLANGE SH	3
16	92301-08012	BOLT FLANGE SH	3

19

AIR FILTER

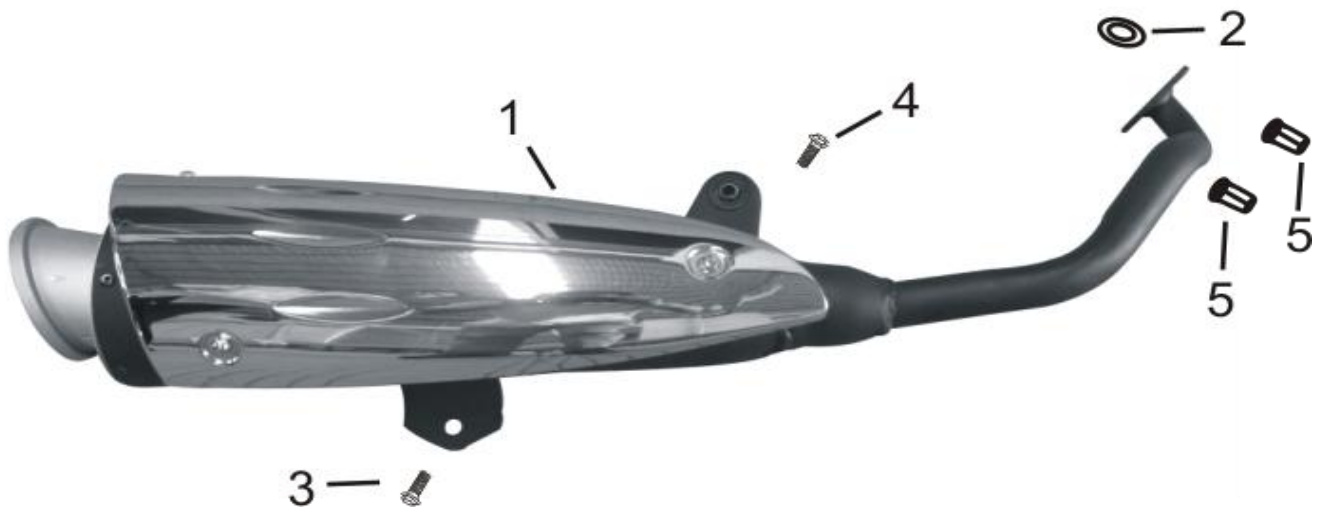


NO.	PART CODE	DESCRIPTION	QTY
1	17200-GP10-000A	AIR FILTER I(50CC 2T)	1
1	17200-GP10-000B	AIR FILTER (50CC 4T)	1
1	17200-GP10-000C	AIR FILTER (125CC)	1

2	16100-GP10-000A	CARBURETOR (50CC 2T)	1
2	16100-GP10-000B	CARBURETOR (50CC 4T)	1
2	16100-GP10-000C	CARBURETOR (125CC)	1
3	16035-GP10-000A	CONTROLLER TO INCREASE AIR THICKNESS (50CC 2T)	1
3	16035-GP10-000B	CONTROLLER TO INCREASE AIR THICKNESS(50CC 4T)	1
3	16035-GP10-000C	CONTROLLER TO INCREASE AIR THICKNESS(125CC)	1
4	90114-06025-000	FLANGE BOLT M6*35	1
5	1721A-GP10-000A	ELEMENT,AIR FILTER (50CC 2T)	1
5	1721A-GP10-000B	ELEMENT,AIR FILTER(50CC 4T)	1
5	1721A-GP10-000C	ELEMENT,AIR FILTER(125CC)	1
6	11211-GP10-0000	TUBE MISSION BREATHER	1
7	11211-MT10-0001	oil tank	
8	11211-MT10-0002	oil level gauge	

20

EXHAUST SYSTEM



NO.	PART CODE	DESCRIPTION	QTY
1	1830A-GP10-000B	EXHAUST MUFFLER ASSY.(50CC 4T)	1
1	1830A-GP10-000C	EXHAUST MUFFLER ASSY.(125CC)	1
2	18291-GM10-0000	GASKET OF EXHAUST PIPE	1
3	92301-08025	BOLT FLANGE SH	1
4	92301-08038	BOLT FLANGE SH	1
5	90301-GT10-9000	NUT CAP 8MM	2

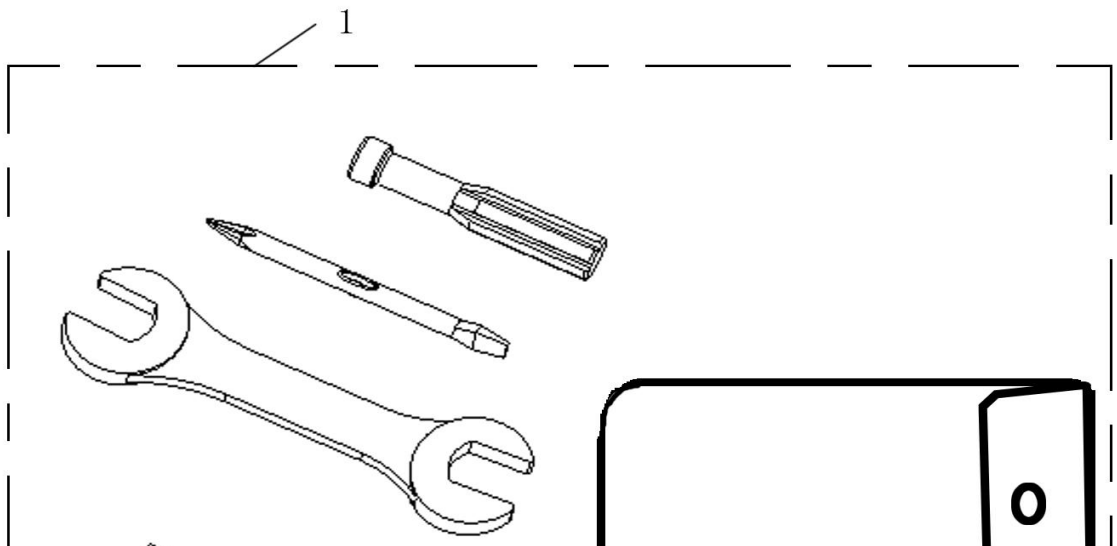
EXHAUST SYSTEM

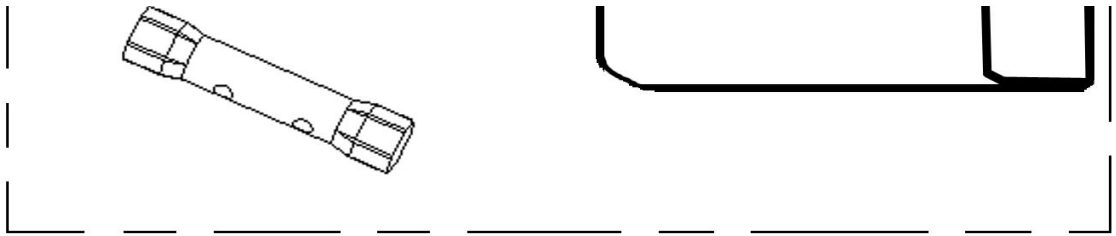


NO.	PART CODE	DESCRIPTION	QTY
1	1830A-GP10-000A	EXHAUST MUFFLER ASSY. (50CC 2T)	1
2	18291-GP10-000A	GASKET OF EXHAUST PIPE	1
3	96001-08040-000A	FLANGE BOLT M8*25	1
4	96001-08050-000A	FLANGE BOLT M8*37	1
5	90301-08000-000A	NUT M8,EXHAUST PIPE	2
6	90301-09000-000A	valve for the catalytic converter	

21

TOOLS





NO.	PAF	QTY
1	89010-GP10-0000	DRIVER'S TOOLS
22		1

7

:

1

AR
DO

UR
A

ARD
OU
R B

|



