

PRICE(USD)
PRICE(USD)

JL125-11 PARTS EXPLODE DRAWING

Edition No.: 01, Year: 2007



CIXI KINGRING MOTORCYCLE CO.,LTD.

INDEX

E-1 Cylinder Head Cover1
 E-2 Cylinder Head2
 E-3 Camshaft&Valves3
 E-4 Timing Chain&Tensioning Device4
 E-5 Cylinder5
 E-6 Right Crankcase Cover.....6
 E-7 Clutch7
 E-8 Starting clutch assy8
 E-9 Left Crankcase Cover.....9
 E-10 Magneto Comp10
 E-11 Rt-L Crankcase Cover11
 E-12 Starting Motor12
 E-13 Oil Pump13
 E-14 Crankcase.....14
 E-15 Crankshaft&Piston15
 E-16 Transmission17
 E-17 Transmission Drum19
 E-18 Carburetor.....20
 E-19 Kick Starter22
 F-1 FRONT ARM SUSPENSION.....23
 F-2 FRONT ABSORBER.....24
 F-3 FRONT WHEEL26
 F-4 REAR WHEEL27
 F-5 FRAME.....28
 F-6 FUEL TANK.....29
 F-7 AIR CLEANER.....30
 F-8 EXHAUST MUFFLER.....31
 F-9 LOWER PUMP ASSY.....32
 F-10 UPPER PUMP ASSY.....33
 F-11 BRAKE PEDAL·FOOTREST.....34
 F-12 BODY COVER.....35
 F-13 HANDLE BAR37
 F-14 WINDSHIED GIASS.....39
 F-15 REAR ARM SUSPENSION.....40
 F-16 REAR ABSORBER ASSY41
 F-17 REAR GOODS BOX42
 F-18 SEAT.....43
 F-19 POWER WIRE.....44
 F-20 GNITION SYSTEM.....45
 F-21 LIGHTING·LIGHT·SIGNALLING.....46
 F-22 SPEEDOMETER.....48

Address: Kingring Developing Zone, Cixi,Ningbo, Zhejiang 315301, P.R.China

Tel:0086 574 63219030, 63218692,63218196;63218672

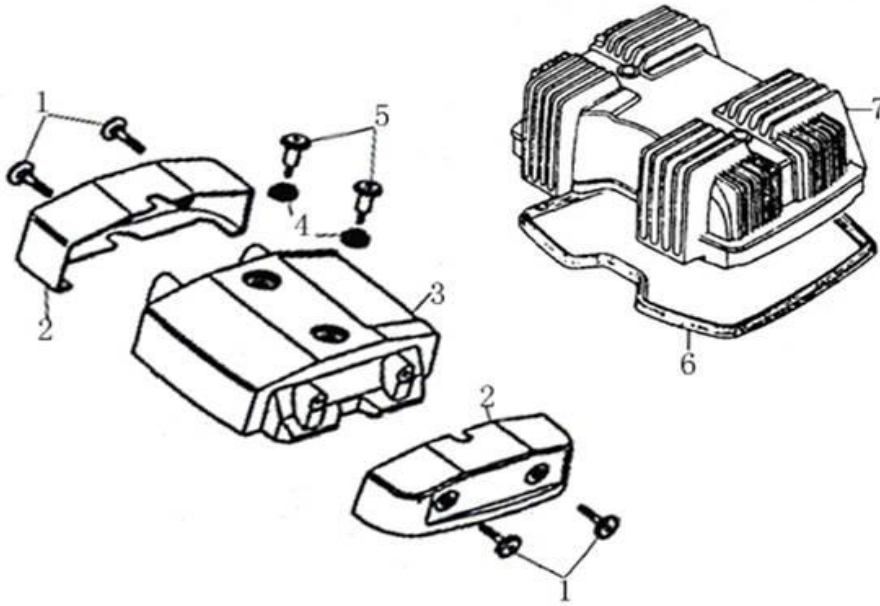
Fax: 0086 574 63218193

E-mail: motor@kingring.com

Website:www.kingringmotor.com; kingring.en.alibaba.com

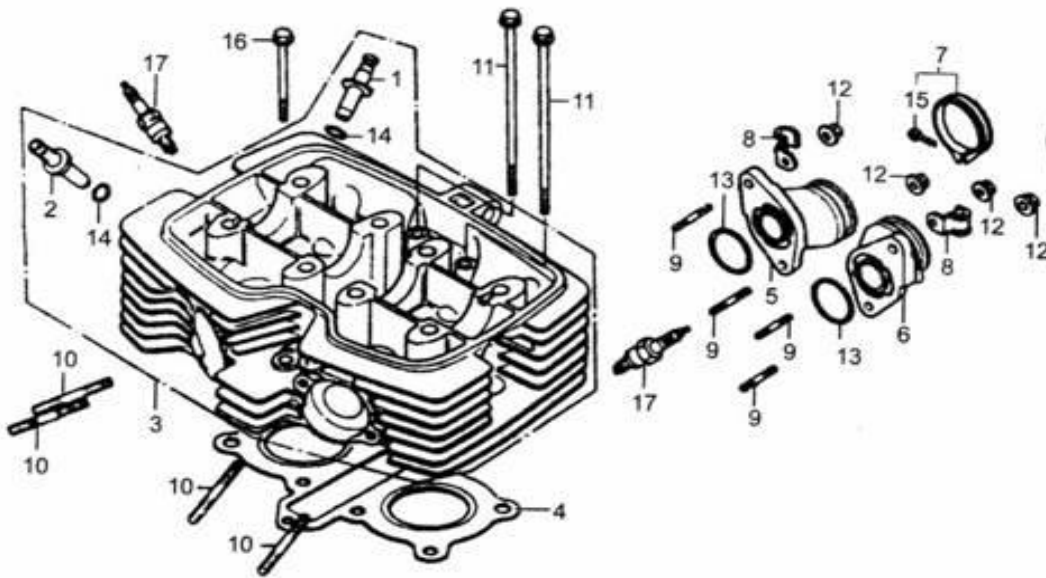
Attention: Please kindly note the latest unit prices (usd) in the below charts are updated every month according to the latest exchange

MONTH - YEAR:	March . 2014
Current exchange rate:	7,8073



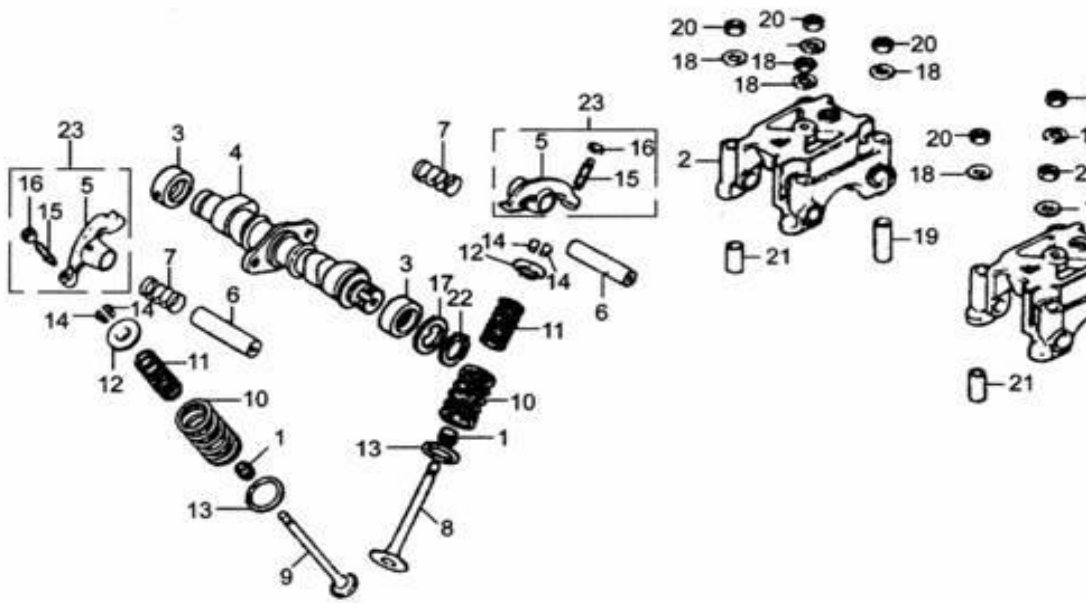
E-1 Cylinder Head Cover

REF. NO.	PART NO.	DESCRIPTION	Q.T.Y	
1	E0101	Connect screw ,cover	4	
2	E0102	Side cover , cylinder head	2	
3	E0103	Cover , cylinder head	1	
4	E0104	Washer , mounting	2	
5	E0105	Bolt , special	2	
6	E0106	Sealed washer, cylinder Head Cover	20	
7	E0107	Cover cylinder head	1	



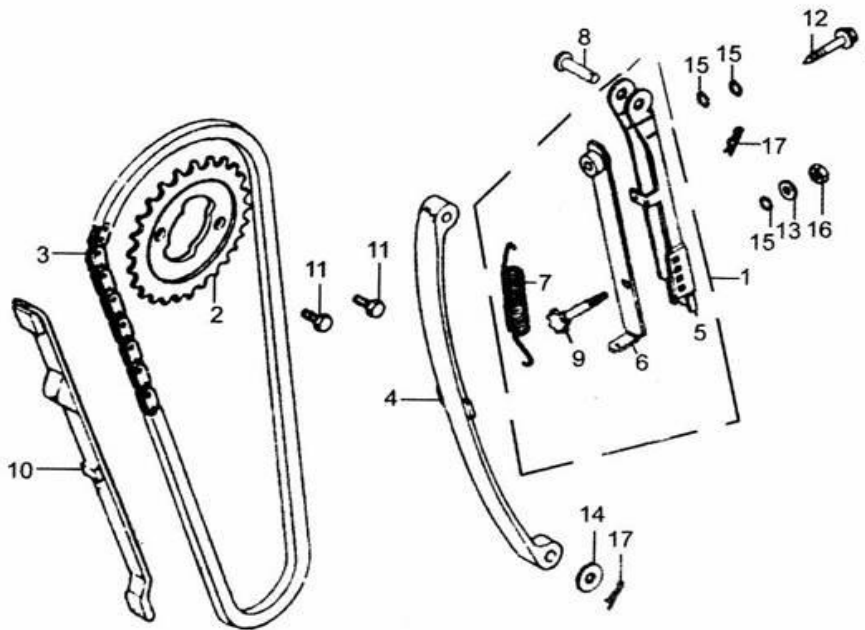
E-2 Cylinder Head

REF. NO.	PART NO.	DESCRIPTION	Q.T.Y	
1	E0201	Pipe, air Intake	2	
2	E0202	Pipe, air exhaust	2	
3	E0203	Head Comp., Cylinder	2	
4	E0204	Gasket, Cylinder Head	10	
5	E0205	Inlet Pipe Comp. RH	10	
6	E0206	Inlet Pipe Comp.LH	10	
7	E0207	Band, Inlet Pipe	2	
8	E0208	Wire Clamp	2	
9	E0209	Stud M6X28	20	
10	E0210	Stud M6X50	20	
11	E0211	Bolt M6X135	2	
12	E0212	Nut M6	4	
13	E0213	O-ring 25.8X2.65	2	
14	E0214	O-ring 10X1.8	4	
15	E0215	Screw M4X30	2	
16	E0216	Bolt M6X65	1	
17	E0217	Spark Plug A7TC	2	



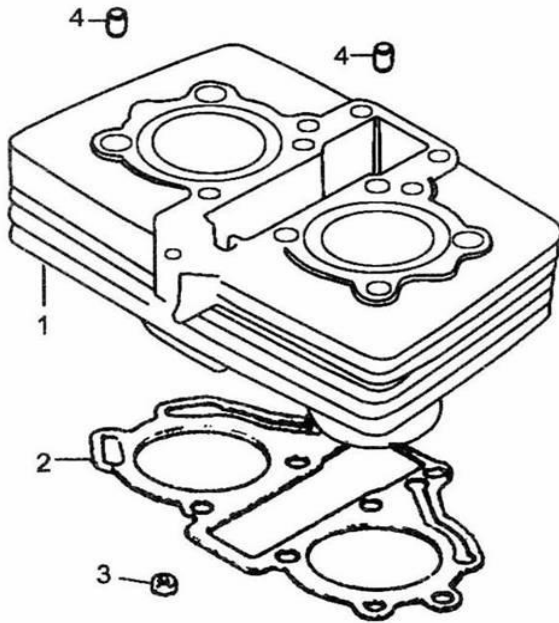
E-3 Camshaft&Valves

REF. NO.	PART NO.	DESCRIPTION	Q.T.Y	
1	E0301	Seal, Oil prevention	20	
2	E0302	Holder, Rocker Arm	20	
3	E0303	Bush, Camshaft	10	
4	E0304	Camshaft	4	
5	.E0305	Rocker Arm, Valve	8	
6	E0306	Shaft, Valve Rocker Arm	4	
7	E0307	Spring, Rocker Arm	4	
8	E0308	Inlet Valve	10	
9	E0309	Exhaust Valve	10	
10	E0310	Outer Spring, Valve	4	
11	E0311	Inner Spring, Valve	4	
12	E0312	Retainer, Valve Spring upper	4	
13	E0313	Seat, valve Outer Spring	4	
14	.E0314	Clip, Valve	24	
15	E0315	Adjusting Screw, Valve Clearance	4	
16	E0316	Adjusting Nut, Valve Clearance	4	
17	E0317	Washer 20,Camshaft	1	
18	E0318	Washer 8	8	
19	E0319	Dowel Pin 10X28.7	2	
20	E0320	Nut M8	8	
21	E0321	Dowel Pin 10X16	2	
22	E0322	Circlip 20	1	
23	E0323	Rocker Arm install assy.	4	



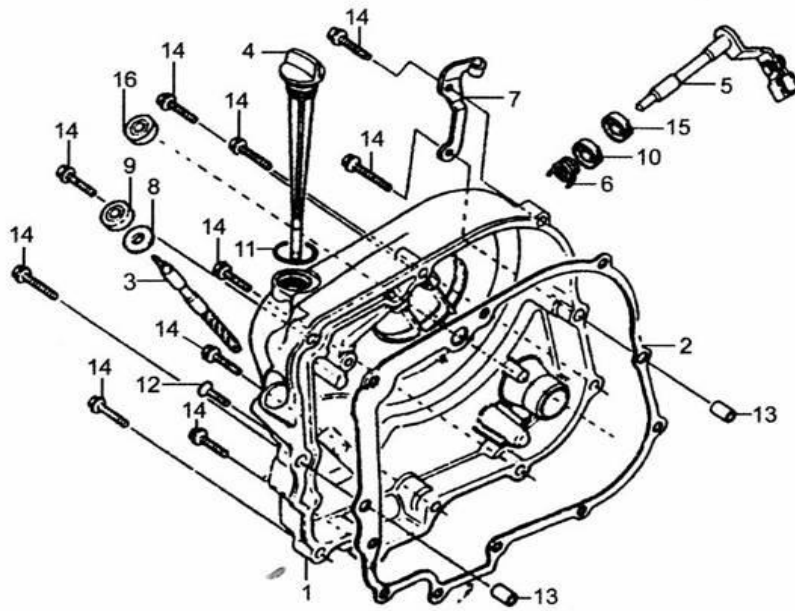
E-4 Timing Chain&Tensioning Device

REF. NO.	PART NO.	DESCRIPTION	Q.T.Y	
1	E0401	Tensioning Device assy.	10	
2	E0402	Driven Sprocket, Timing	2	
3	E0403	Timing Chain	5	
4	E0404	Tensioning Plate	5	
5	E0405	Tensioning Rod	1	
6	E0406	Tensioning Body assy.	1	
7	E0407	Spring, Tensioning Rod	1	
8	E0408	Pin	1	
9	E0409	Adjuster Screw	1	
10	E0410	Guide board	5	
11	E0411	Bolt M7X12	2	
12	E0412	Lock Screw M6X28	1	
13	E0413	Copper Washer 6	1	
14	E0414	Washer	1	
15	E0415	O-ring 5.8X1.9	3	
16	E0416	Nut M6	1	
17	E0417	Safety Pin 6	2	



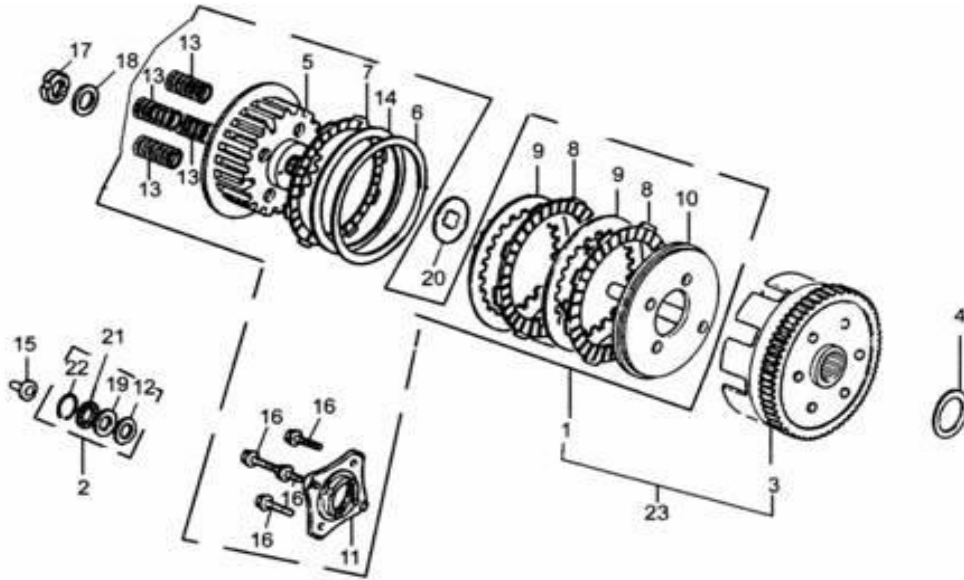
E-5 Cylinder

REF. NO.	PART NO.	DESCRIPTION	Q.T.Y	
1	E0501	Cylinder Comp	3	
2	E0502	Gasket, Cylinder	20	
3	E0503	Nut M6	1	
4	E0504	Dowel Pin 10X16	2	



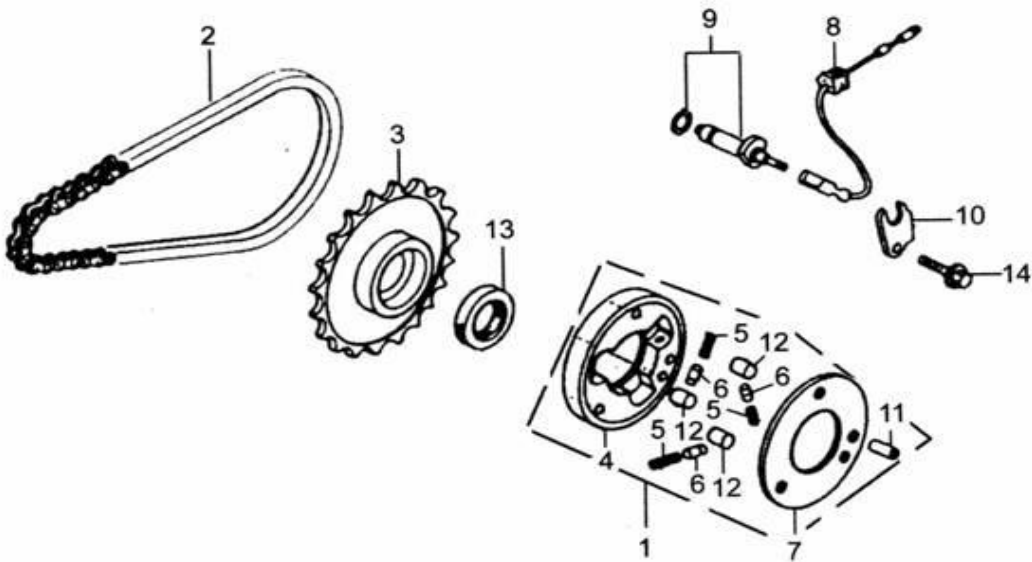
E-6 Right Crankcase Cover

REF. NO.	PART NO.	DESCRIPTION	Q.T.Y	
1	E0601	Cover, Crankcase RH	2	
2	E0602	Gasket,RH Crankcase Cover	20	
3	E0603	Output Shaft, Tachometer	1	
4	E0604	Dipstick	10	
5	E0605	Lever Assy., Clutch operation	5	
6	E0606	Spring, Clutch Lever	1	
7	E0607	Holder ,clutch cable	1	
8	E0608	Washer 6	1	
9	E0609	Oil Seal 6.5X14.5X7	20	
10	E0610	Oil Seal 12X18X5	20	
11	E0611	O-ring 18X3	1	
12	E0612	Screw M5X25	1	
13	E0613	Dowel Pin 8X14	2	
14	E0614	Bolt M6X40	10	
15	E0615	Ball Bearing HK 12	2	
16	E0616	Oil Seal 16X28X7	20	



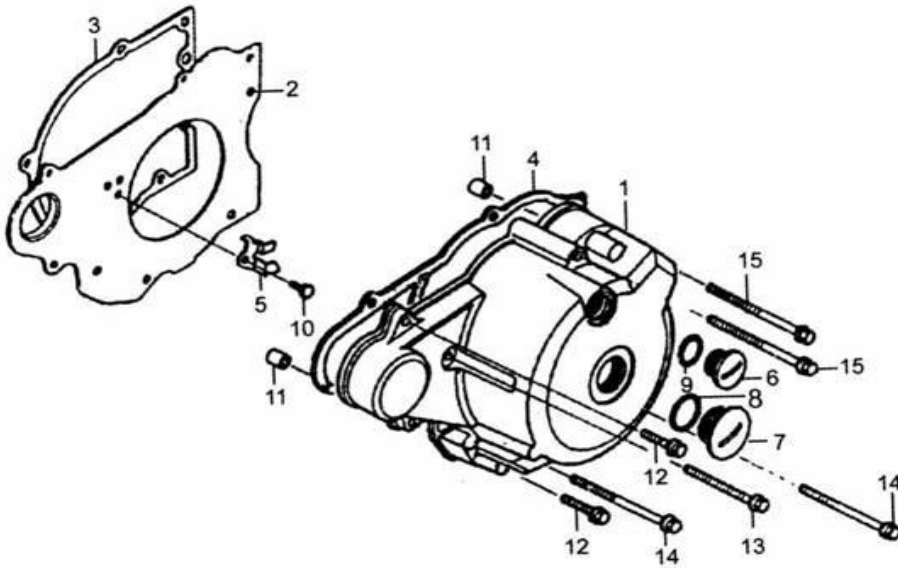
E-7 Clutch

REF. NO.	PART NO.	DESCRIPTION	Q.T.Y	
1	E0701	Driven Disc Comp. Clutch	5	
2	E0702	Thrust Bearing Comp.	1	
3	E0703	Drive Disc Comp., Clutch	1	
4	E0704	Washer 30X36X3.4	1	
5	E0705	Driven Disc Comp., Clutch	1	
6	E0706	Spring ,Clutch	1	
7	E0707	Drive Plate Comp.(2), Clutch	10	
8	E0708	Drive Plate Comp.(1), Clutch	20	
9	E0709	Driven Plate	20	
10	E0710	Pressure Panel, Clutch	1	
11	E0711	End Cover, Clutch	1	
12	E0712	Thrust Bearing,Clutch	1	
13	E0713	Ring	4	
14	E0714	Separating Spring	1	
15	E0715	Pusher, Clutch	1	
16	E0716	Bolt M6X22	4	
17	E0717	Lock Nut M16	1	
18	E0718	Washer 16	1	
19	E0719	Washer 12	1	
20	E0720	Spline Washer 20	1	
21	E0721	Needle Bearing 1226	1	
22	E0722	Collar 12	1	
23	E0723	Clutch Body Comp.	5	



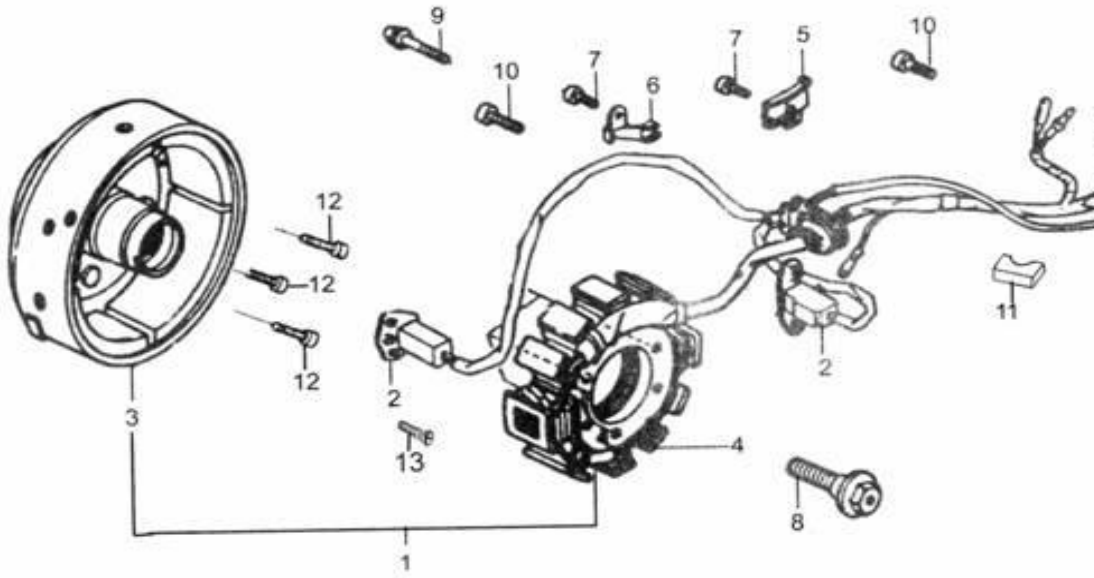
E-8 Starting Clutch Assy

REF. NO.	PART NO.	DESCRIPTION	Q.T.Y	
1	E0801	Starting Clutch Assy.	10	
2	E0802	Starting Chain	5	
3	E0803	Sprocket Comp.	1	
4	E0804	Starting Clutch Body	1	
5	E0805	Spring	3	
6	E0806	Sleeve, Spring	3	
7	E0807	Cover, Starting Clutch	1	
8	E0808	Neutral speed Wire assy.	10	
9	E0809	Neutral speed Indicator assy.	10	
10	E0810	Keep Board, Gearshift Indicator	1	
11	E0811	Pin 6X13.5 ,clutch	1	
12	E0812	Roller 10.2X9.5	3	
13	E0813	Oil Seal 22X31X5, Crankshaft LH	20	
14	E0814	Blot M6X12	1	



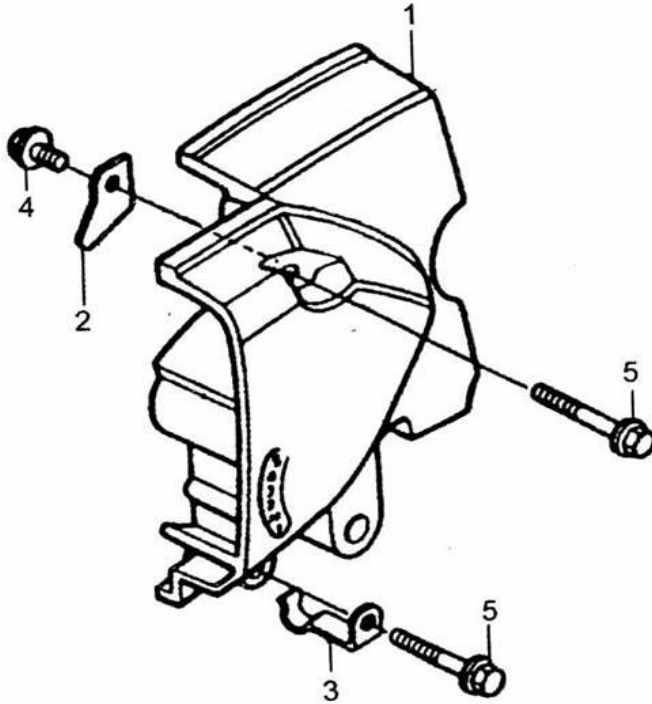
E-9 Left Crankcase Cover

REF. NO.	PART NO.	DESCRIPTION	Q.T.Y
1	E0901	Cover, LH Crankcase	1
2	E0902	Spacer Comp	5
3	E0903	Gasket, Spacer	20
4	E0904	Gasket, L Crankcase Cover	20
5	E0905	Located Plate, Starting Sprocket	1
6	E0906	Plug, Watch Hole M14	10
7	E0907	Plug 30mm	10
8	E0908	O-ring 27X2.5	10
9	E0909	O-ring 13.5X2.5	10
10	E0910	Bolt M6X8	1
11	E0911	Dowel Pin 8X16	2
12	E0912	Bolt M6X20	2
13	E0913	Bolt M6X40	1
14	E0914	Bolt M6X50	2
15	E0915	Bolt M6X65	2



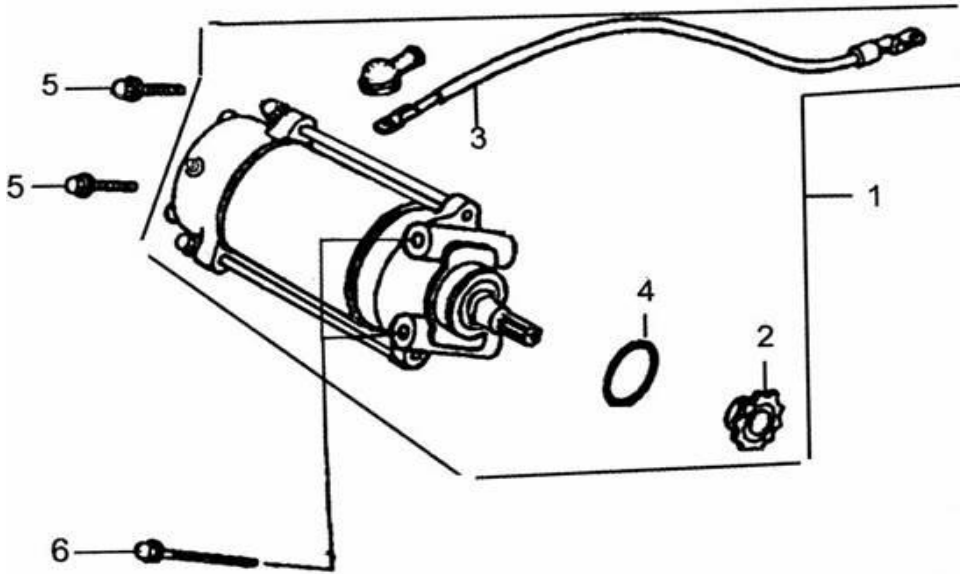
E-10 Magneto

REF. NO.	PART NO.	DESCRIPTION	Q.T.Y	
1	E1001	Magneto Assy.	1	
2	E1002	Induced Coil	1	
3	E1003	Rotor Comp., Magneto	10	
4	E1004	Stator Comp., Magneto	10	
5	E1005	Wire Clip, Magneto	1	
6	E1006	Wire Clip, Induced Coil	1	
7	E1007	Bolt M5X10	2	
8	E1008	Bolt M10X32.5	1	
9	E1009	Screw M5X28	3	
10	E1010	Screw M6X20	2	
11	E1011	Located part, Wire Harness	1	
12	E1012	Screw M6X16	3	
13	E1013	Screw M6X14	1	



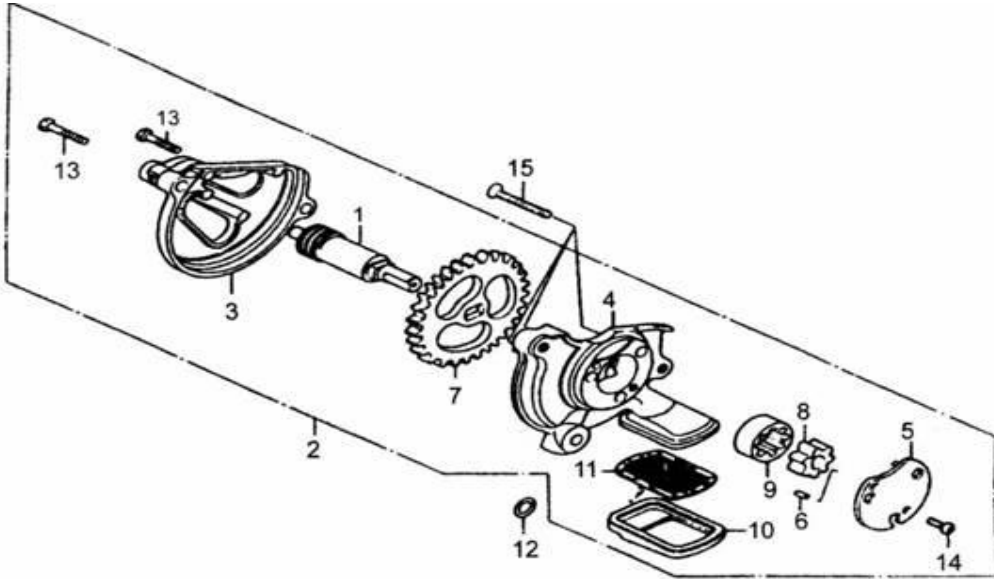
E-11 Rt-L Crankcase Cover

REF. NO.	PART NO.	DESCRIPTION	Q.T.Y	
1	E1101	Cover,RR-LH	2	
2	E1102	Guided plate, Drive Chain	1	
3	E1103	Clip, Starter Motor Cable	1	
4	E1104	Bolt M6X12	1	
5	E1105	Bolt M6X40	2	



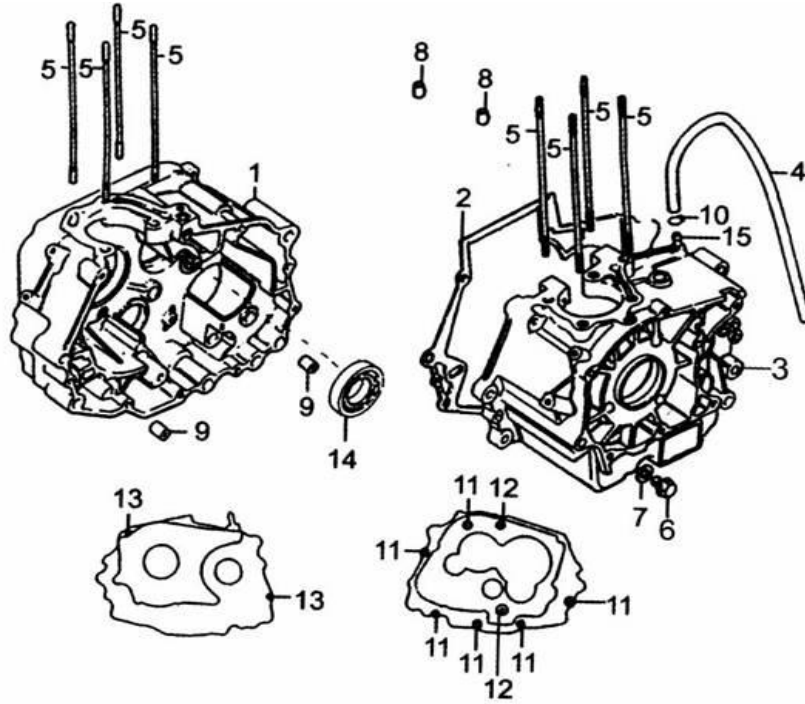
E-12 Starting Motor

REF. NO.	PART NO.	DESCRIPTION	Q.T.Y	
1	E1201	Starting Motor Assy.	5	
2	E1202	Small Sprocket	1	
3	E1203	Wire Harness, Starting Motor	1	
4	E1204	O-ring 32.5X2.0	1	
5	E1205	Bolt M6X25	2	
6	E1206	Bolt M6X65	2	



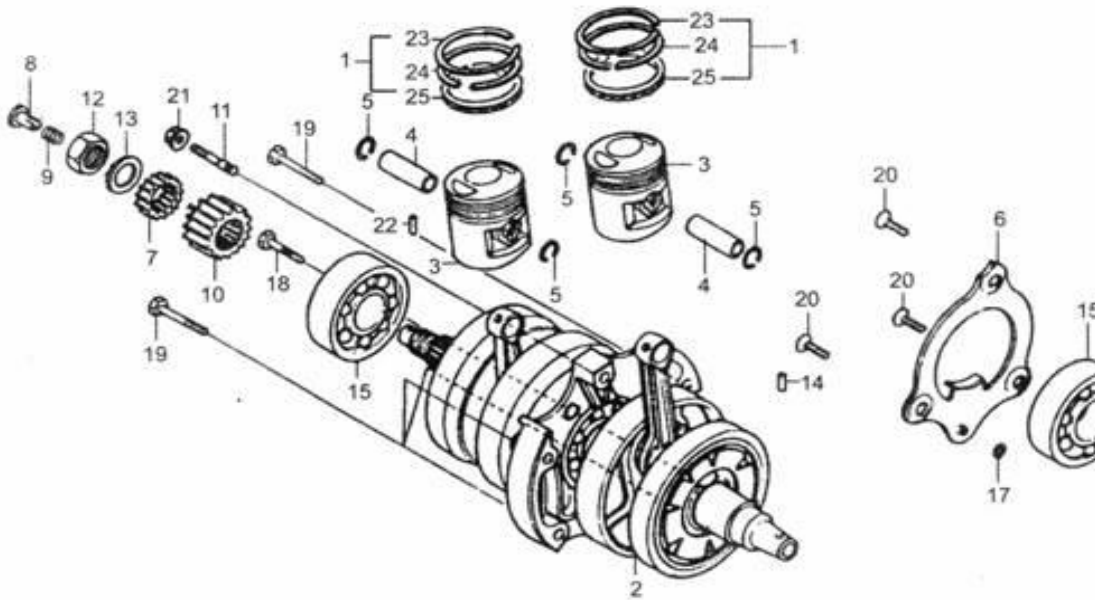
E-13 Oil Pump

REF. NO.	PART NO.	DESCRIPTION	Q.T.Y	
1	E1301	Shaft.Oil Pump	1	
2	E1302	Oil Pump Assy.	5	
3	E1303	Sleeve, Oil Pump Gear	1	
4	E1304	Oil Pump Body	1	
5	E1305	Cover, Oil Pump	1	
6	E1306	Set Pin C4X6.5	1	
7	E1307	Driven Gear,Oil Pump	1	
8	E1308	Inner Rotor, Oil Pump	1	
9	E1309	Outer Rotor, Oil Pump	1	
10	E1310	Holder, Filtering web	1	
11	E1311	Oil Filtering web assy.	1	
12	E1312	O-ring 6X3	1	
13	E1313	Bolt M5X20	2	
14	E1314	Screw M5X10	1	
15	E1315	Screw M6X32	3	



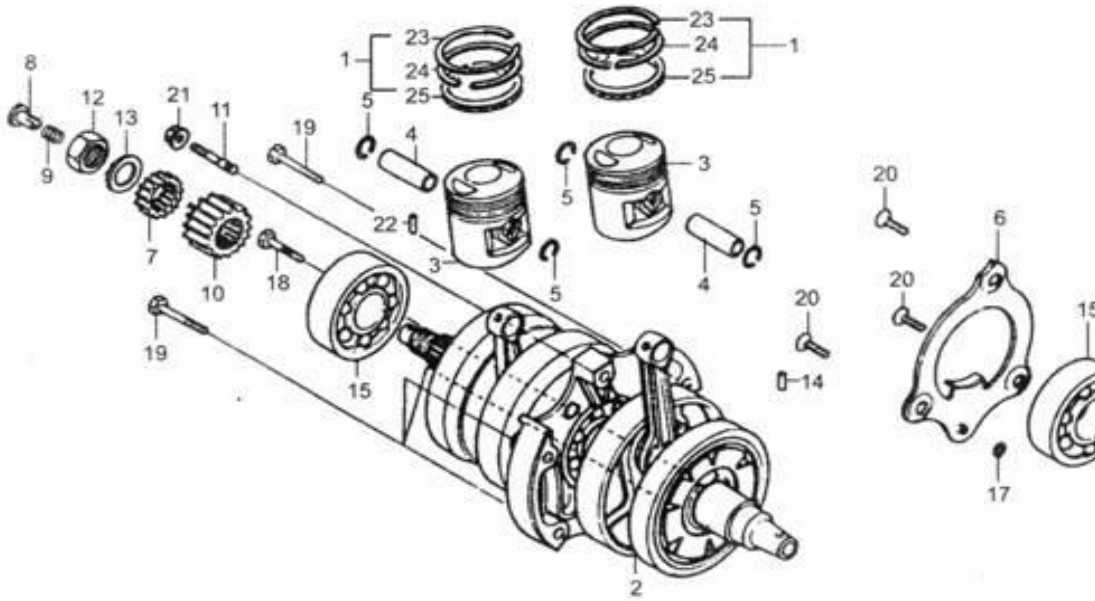
E-14 Crankcase

REF. NO.	PART NO.	DESCRIPTION	Q.T.Y	
1	E1401	Crankcase Comp., Rt.	1	
2	E1402	Gasket, Crankcase	20	
3	E1403	Crankcase Comp., LH.	1	
4	E1404	Exhaust Tube	1	
5	E1405	Stud M8X197, Cylinder	24	
6	E1406	Drain Plug M12	1	
7	E1407	Washer, Drain Plug12	1	
8	E1408	Dowel Pin 8X14	2	
9	E1409	Dowel Pin 12X20	2	
10	E1410	Tube Clip B12	1	
11	E1411	Bolt M6X40	7	
12	E1412	Bolt M6X65	2	
13	E1413	Bolt M6X40	1	
14	E1414	Bearing 39741/15/12	1	
15	E1415	Exhaust Tube Mouth	1	



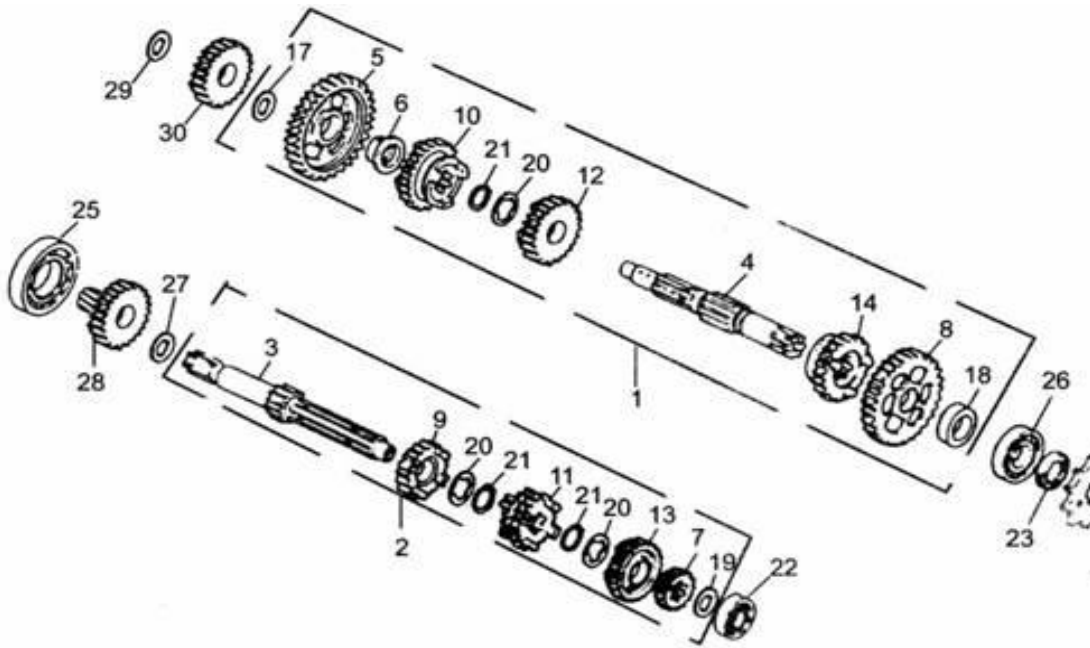
E-15 Crankshaft&Piston

REF. NO.	PART NO.	DESCRIPTION	Q.T.Y	
1	E1501	Piston Ring Set	5	
2	E1502	Crankshaft Comp.	2	
3	E1503	Piston.	6	
4	E1504	Piston Pin	6	
5	E1505	Clip, Piston Pin	12	
6	E1506	Plate, Oil Through	1	
7	E1507	Drive Gear , Oil Pump	1	
8	E1508	Oil Pipe, Crankshaft	1	
9	E1509	Spring Oil Pipe	1	
10	E1510	Primary Drive Gear	1	
11	E1511	Stud M7X34	1	
12	E1512	Lock Nut M16	1	
13	E1513	Washer	1	
14	E1514	Dowel Pin 4X4.6	1	
15	E1515	Bearing 6305	2	



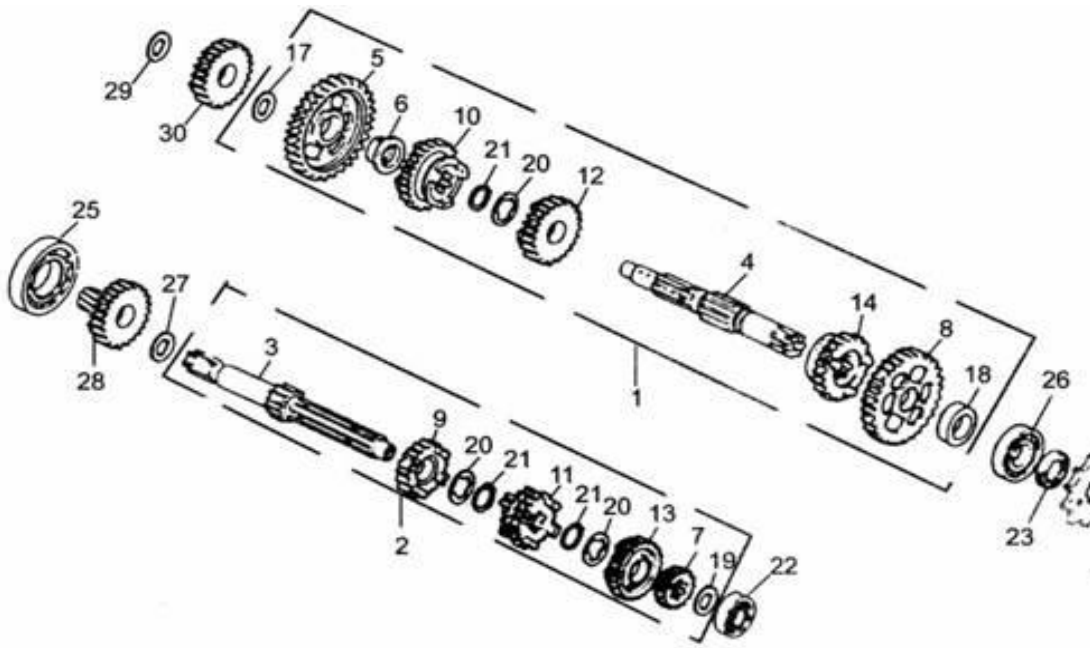
E-15 Crankshaft&Piston

REF. NO.	PART NO.	DESCRIPTION	Q.T.Y	
16	E1516	Oil Seal 35X52X7	10	
17	E1517	O-ring 6X3	1	
18	E1518	Bolt M6X28	1	
19	E1519	Bolt M6X32	4	
20	E1520	Screw M6X16	3	
21	E1521	Nut M6	1	
22	E1522	Roller 2X13.8	1	
23	E1523	Piston Ring (1)	2	
24	E1524	Piston Ring (2)	2	
25	E1525	Oil Ring Set	2	



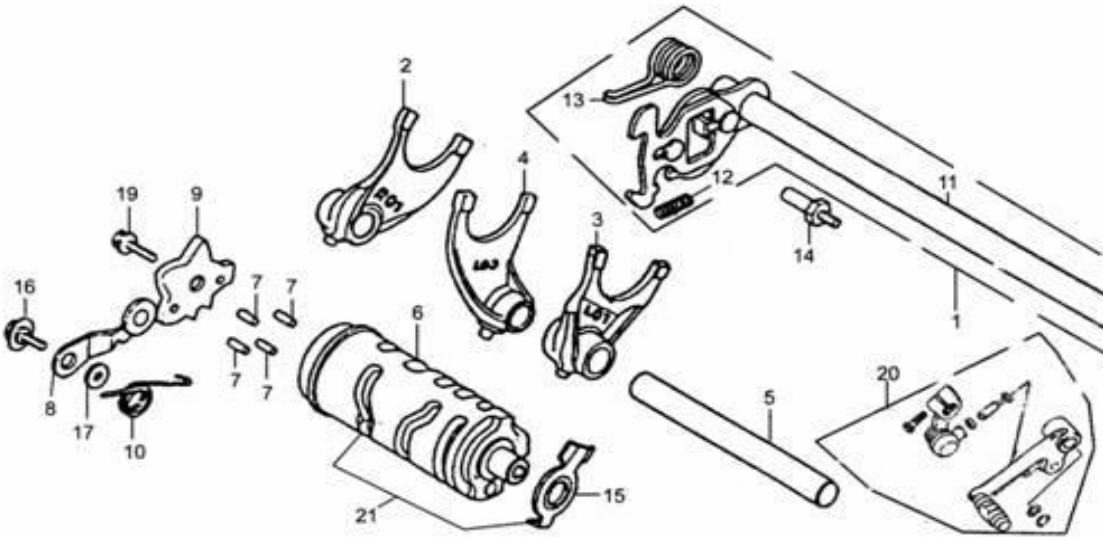
E-16 Transmission

REF. NO.	PART NO.	DESCRIPTION	Q.T.Y	
1	E1601	Countershaft Comp.	1	
2	E1602	Main Shaft Comp.	1	
3	E1603	Main Shaft	1	
4	E1604	Countershaft	1	
5	E1605	Gear, Countershaft First	1	
6	E1606	Bush	1	
7	E1607	Gear, Main Shaft Second	1	
8	E1608	Gear,Coutershaft Second	1	
9	E1609	Gear,Main Shaft Third	1	
10	E1610	Gear, Coutershaft Third	1	
11	E1611	Gear,Main Shaft Fourth	1	
12	E1612	Gear, Coutershaft Fourth	1	
13	E1613	Gear,Main Shaft Fifth	1	
14	E1614	Gear, Coutershaft Fifth	1	
15	E1615	Sprocket, Output	5	



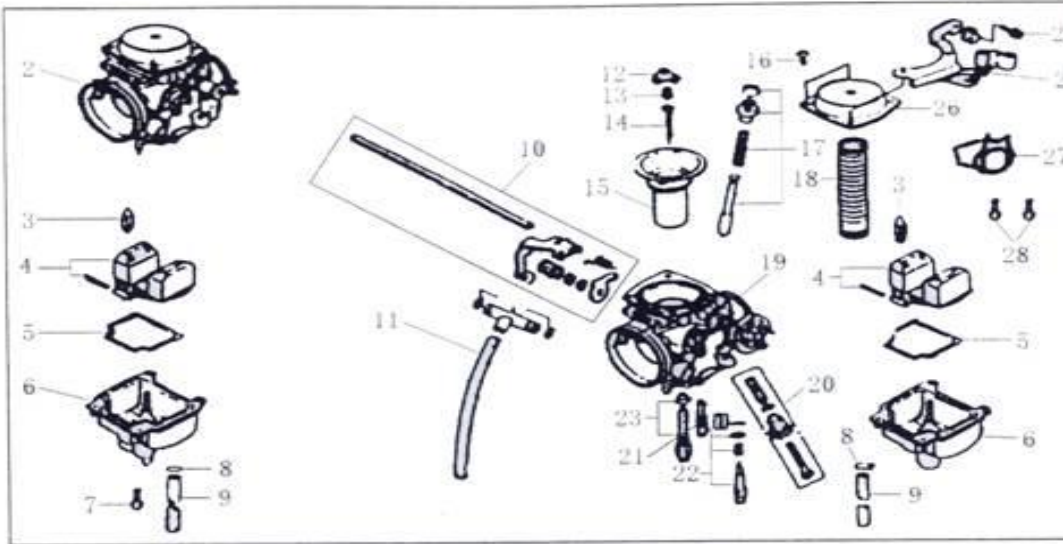
E-16 Transmission

REF. NO.	PART NO.	DESCRIPTION	Q.T.Y	
16	E1616	Fixing Plate, Sprocket	1	
17	E1617	Circlip	1	
18	E1618	Shaft Collar 20X29	1	
19	E1619	Washer 15	1	
20	E1620	Washer A20	3	
21	E1621	Collar 20	3	
22	E1622	Bearing 6202	1	
23	E1623	Oil Seal 20X34X7, Countershaft	10	
24	E1624	Bolt M6X10	2	
25	E1625	Bearing 6006	1	
26	E1626	Bearing 6204U	1	
27	E1627	Washer driven gear	1	
28	E1628	Gear Comp. Driven gear	1	
29	E1629	Washer, midium gear	1	
30	E1630	Gear Comp. Midium gear	1	



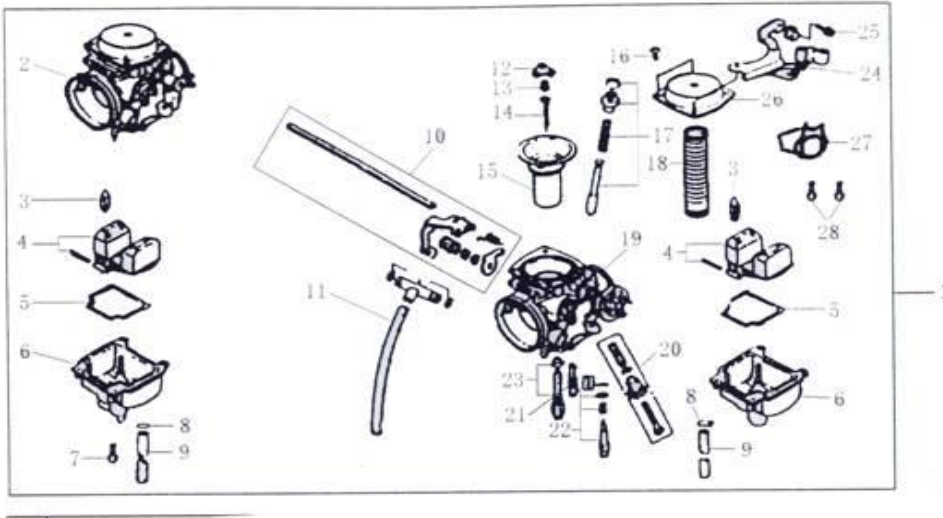
E-17 Transmission Drum

REF. NO.	PART NO.	DESCRIPTION	Q.T.Y	
1	E1701	Gearshift Spindle Assy.	2	
2	E1702	Fork(1)	1	
3	E1703	Fork(3)	1	
4	E1704	Fork(2)	1	
5	E1705	Shaft, Fork	1	
6	E1706	Gearshift cam	1	
7	E1707	Pin, Gearshift Indicating	7	
8	E1708	Stopper Comp., Gearshift Drum	1	
9	E1709	Gearshift Wheel	1	
10	E1710	Spring, located board	1	
11	E1711	Gearshift Spindle Comp.	1	
12	E1712	Spring, Gearshift Arm	1	
13	E1713	Returned Spring, Gearshift Spindle	1	
14	E1714	Thrust Screw, Returned Spring	1	
15	E1715	Contactora, neutral speed indicator	1	
16	E1716	Pin M6X12	1	
17	E1717	Washer 6, Stopper	1	
18	E1718	Oil Seal 12X24X10	1	
19	E1719	Bolt M6X22	1	
20	E1720	Gearshift Rod Assy.	1	
21	E1721	Gearshift Drum Comp.	1	



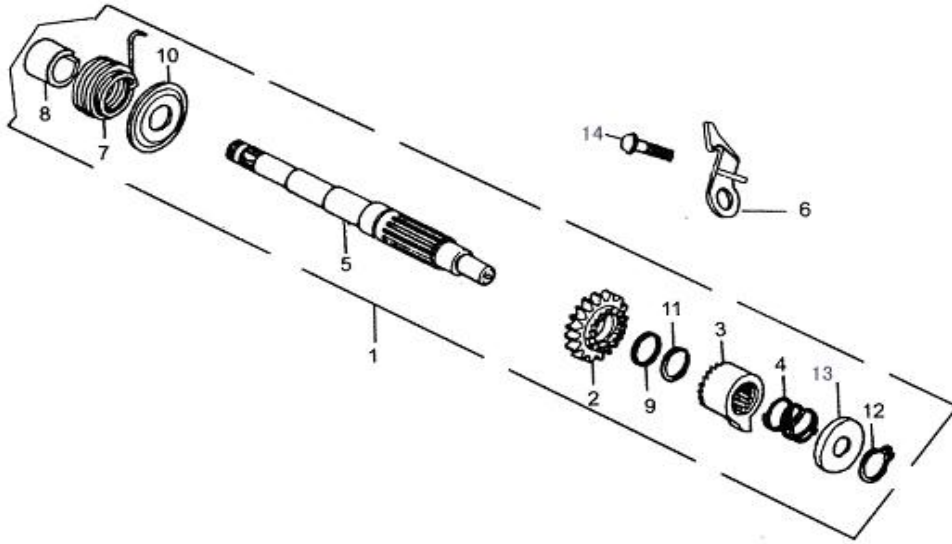
E-18 Carburetor

REF. NO.	PART NO.	DESCRIPTION	Q.T.Y	
1	E1801	Carburetor,assy	5	
2	E1802	Left carburetor comp	1	
3	E1803	Float pin	2	
4	E1804	Float set	2	
5	E1805	Gasket , float chamber	2	
6	E1806	Chamber set , float	2	
7	E1807	Screw M4×14	8	
8	E1808	Clip , tube	2	
9	E1809	Over petrol tube	2	
10	E1810	Starter control rob comp	1	
11	E1811	Connecting petrol pipe comp	1	
12	E1812	Plate, Limited	2	
13	E1813	Spring	2	
14	E1814	Pin , petrol	2	
15	E1815	Vacuum piston, valve	2	
16	E1816	Screw M4×8	8	
17	E1817	Starter thicken valve set	1	
18	E1818	Reset spring	2	
19	E1819	Right carburetor comp	1	
20	E1820	Screw set	1	
21	E1821	Jet , slow	2	
22	E1822	Jet , main	2	
23	E1823	Screw set	2	



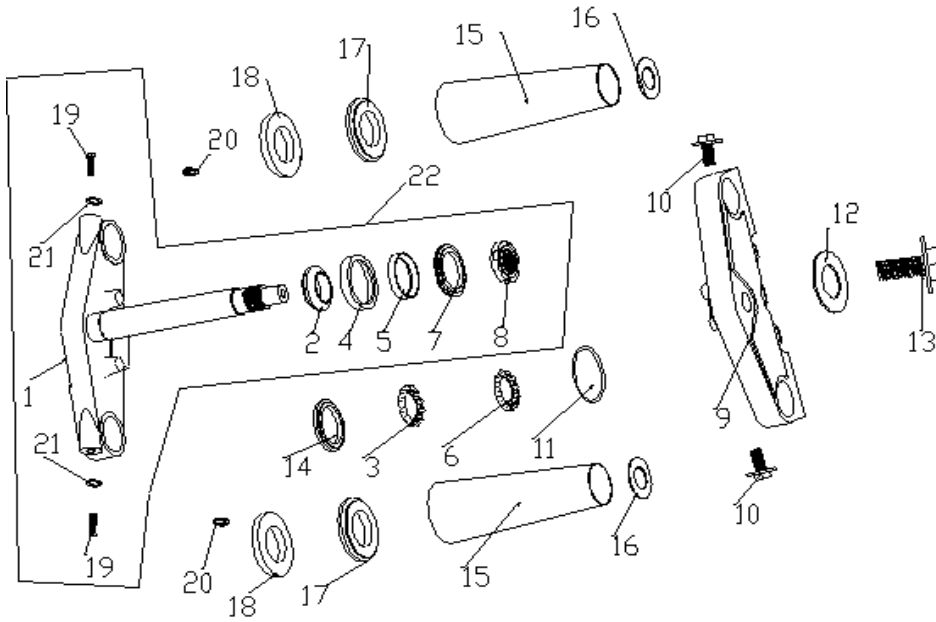
E-18 Carburetor

REF. NO.	PART NO.	DESCRIPTION	Q.T.Y	
24	E1824	Bracket	1	
25	E1825	Screw M4×10	2	
26	E1826	Vacuum piston valve cover	2	
27	E1827	Decorative cover , carburetor	1	
28	E1828	Bolt M4×6	2	



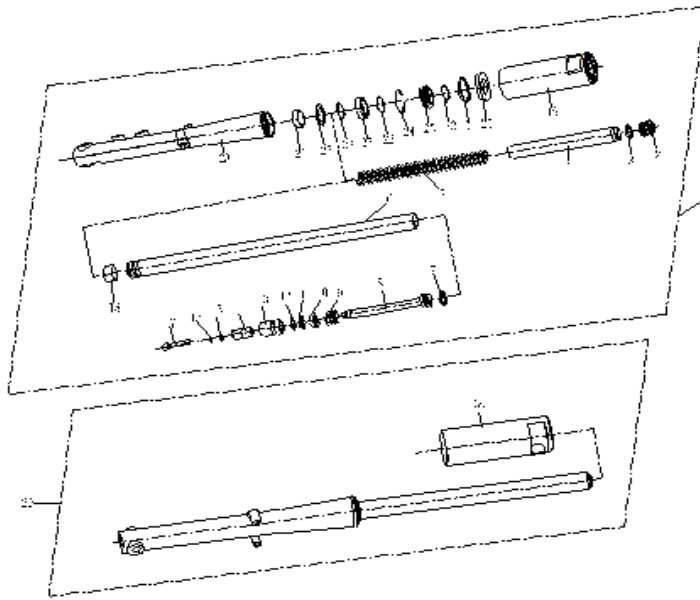
E-19 Kick Starter

REF. NO.	PART NO.	DESCRIPTION	Q.T.Y	
1	E1901	Start Spindle Assy.	1	
2	E1902	Start Gear Comp.	1	
3	E1903	Ratchet wheel	1	
4	E1904	Spring, Ratchet	1	
5	E1905	Start Spindle	1	
6	E1906	Guide board, Ratchet	1	
7	E1907	Reset Spring	1	
8	E1908	Collar	1	
9	E1909	Washer	1	
10	E1910	holder ,Spring	1	
11	E1911	Circler	1	
12	E1912	Circler	1	
13	E1913	Seat, Ratchet Spring	1	
14	E1914	Screw M6X16	1	



F-1 FRONT ARM SUSPENSION

REF. NO. NO.	PART NO.	DESCRIPTION	Q.T.Y .T	
1	F0101	Steering Comp	1	
2	F0102	Socket, bearing lower	1	
3	F0103	Bracket, ball lower	1	
4	F0104	Socket, frame	1	
5	F0105	Socket, frame	1	
6	F0106	Bracket, ball upper	1	
7	F0107	Socket, bearing upper	1	
8	F0108	locknut	1	
9	F0109	Holder, upper	1	
10	F0110	Bolt M8×45	2	
11	F0111	Cover, protecting	1	
12	F0112	Plain Washer 10	1	
13	F0113	Bolt M10×1.25×25	1	
14	F0114	Washer, rubber	1	
15	F0115	Tube, upper	2	
16	F0116	Amortize washer, upper	2	
17	F0117	Amortize washer, Lower	2	
18	F0118	Rubber, tube	2	
19	F0119	Bolt M8×40	2	
20	F0120	Washer 8	2	
21	F0121	Plain Washer 8	2	
22	F0122	HOLDER LOWER	1	

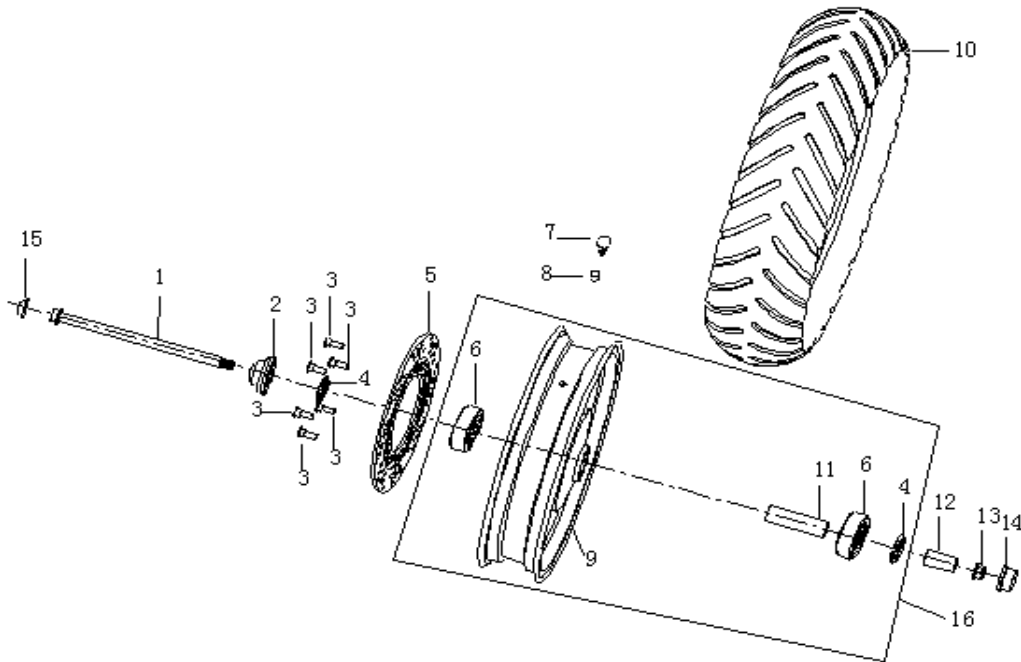


F-2 FRONT ABSORBER

REF. NO .	PART NO.	DESCRIPTION	Q.T.Y	
1	F0201	Shock absorber assy.RH	1	
2	F0202	Bolt ,absorber	1	
3	F0203	O ring seal	1	
4	F0204	Extra steel tube	1	
5	F0205	Amortize spring,FR	1	
6	F0206	Tube, fork FR	1	
7	F0207	Piston ring	1	
8	F0208	Tube	1	
9	F0209	Returned spring	1	
10	F0210	Limit socket upper	1	
11	F0211	Limit socket lower	1	
12	F0212	Washer	1	
13	F0213	Outside jacket	1	
14	F0214	Part,Oil blocked	1	
15	F0215	Rubber washer	1	
16	F0216	Small washer	1	
17	F0217	Bolt M10x50	1	
18	F0218	Circlip,outside	1	
19	F0219	Sleeve, Fork FR	1	
20	F0220	Washer, Sleeve, Fork FR	1	
21	F0221	Circlip inside	1	
22	F0222	Hoop ,fork FR.	3	

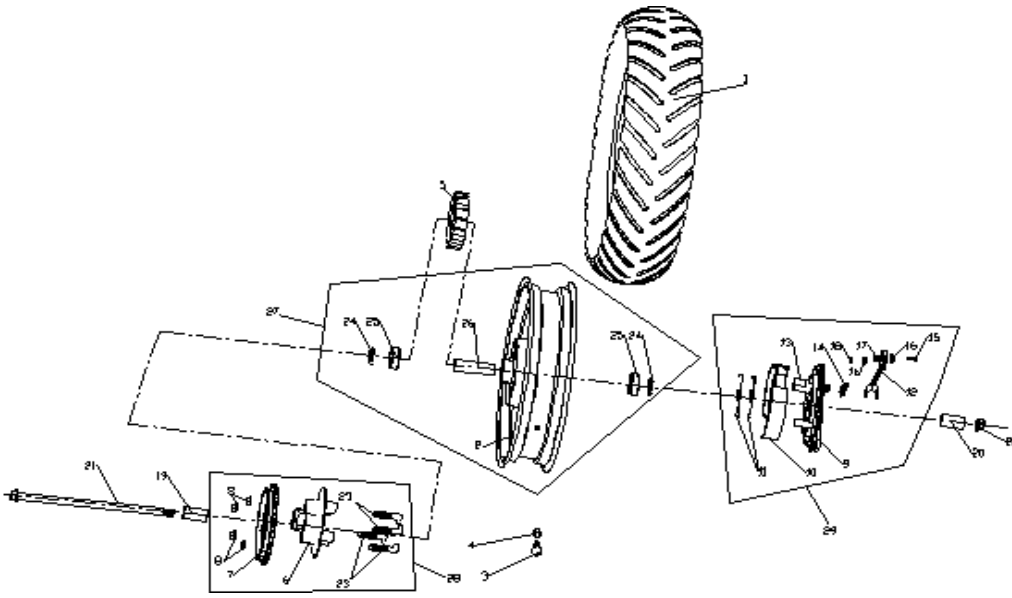
F-2 FRONT ABSORBER

23	F0223	Rubber washer,fork FR	1	
24	F0224	Thrust ring,oil seal	1	
25	F0225	Oil seal,fork FR	1	
26	F0226	Washer, oil seal	1	
27	F0227	Circlip,inside	1	
28	F0228	Sleeve,absorber RH	1	
29	F0229	Absorber assy. LH	1	
30	F0230	Sleeve,fork front, LH	1	



F-3 FRONT WHEEL

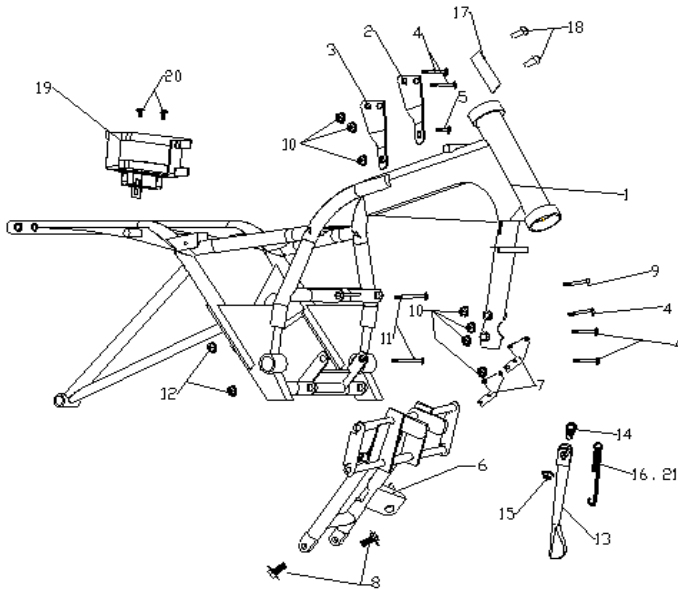
REF. NO.	PART NO.	DESCRIPTION	Q.T.Y	.T
1	F0301	Axle, front wheel	1	
2	F0302	Counter	1	
3	F0303	Screw M8×24,disk	6	
4	F0304	Oil seal, front wheel	2	
5	F0305	Disk brake	1	
6	F0306	Bearing	2	
7	F0307	Cap,Valve	1	
8	F0308	Breather, valve	1	
9	F0309	Rim, front wheel	1	
10	F0310	Tire Comp, front	1	
11	F0311	Sleeve	1	
12	F0312	Bushing	1	
13	F0313	Nut M14×1.5	1	
14	F0314	Rubber cap RH	1	
15	F0315	Rubber cap LH	1	
16	F0316	FRONT RIM ASSY.	1	



F- 4 REAR WHEEL

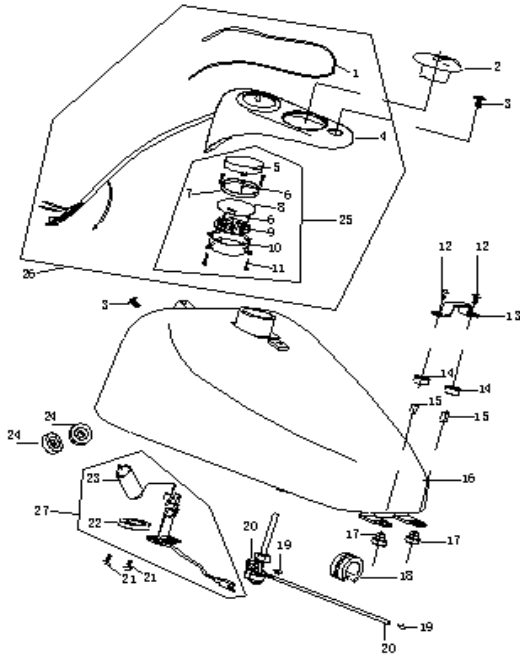
REF. NO. NO.	PART NO.	DESCRIPTION	Q.T.Y	T
1	F0401	Tire, rear wheel	1	
2	F0402	Rim, rear wheel	1	
3	F0403	Cap ,Valve	1	
4	F0404	Breather, valve	1	
5	F0405	Amortize part	4	
6	F0406	Sprocket socket	1	
7	F0407	Sprocket, rear	10	
8	F0408	Nut M10×1.25	4	
9	F0409	Panel, rear brake	1	
10	F0410	Pad, rear brake	2	
11	F0411	Spring, rear brake	2	
12	F0412	Lever, brake cam	1	
13	F0413	Camshaft, rear brake	1	
14	F0414	Indicator	1	
15	F0415	Bolt M6×35	1	
16	F0416	Plain Washer 6	2	
17	F0417	Spring Washer 6	1	
18	F0418	Nut M6	1	
19	F0419	Spacer, rear axle LH	1	
20	F0420	Spacer, rear axle RH	1	
21	F0421	Axle, rear wheel	1	
22	F0422	Nut M14	1	
23	F0423	Bolt ,sprocket	4	
24	F0424	Oil seal	2	
25	F0425	Bearing	2	
26	F0426	Middle spacer	1	

27	F0427	REAR RIM ASSY.	1	
28	F0428	Sprocket seat assy.	1	
29	F0429	Rear brake assy.	1	



F-5 FRAME

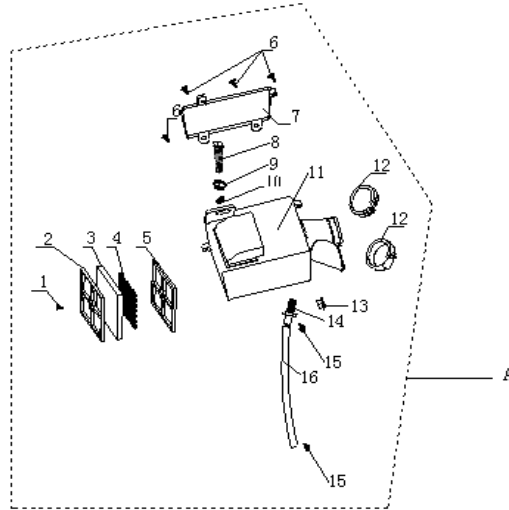
REF. NO.	PART NO.	DESCRIPTION	Q.T.Y .T	
1	F0501	Frame	1	
2	F0502	Plate, upper LH	1	
3	F0503	Plate, upper RH	1	
4	F0504	Bolt M8×65	5	
5	F0505	Bolt M8×40	1	
6	F0506	Holder, engine	1	
7	F0507	Plate, front	2	
8	F0508	Bolt M8×25	2	
9	F0509	Bolt M8×60	1	
10	F0510	Nut M8	7	
11	F0511	Bolt M10×1.25×110	2	
12	F0512	Nut M10×1.25	2	
13	F0513	Prop	1	
14	F0514	Screw, prop	1	
15	F0515	Nut M10×1.25	1	
16	F0516	Spring, inside	1	
17	F0517	Plate, frame	1	
18	F0518	Rivet ϕ 3.2×9	2	
19	F0519	Holder, battery	1	
20	F0520	Bolt M6×14	2	
21	F0521	Spring, outside	1	



F-6 FUEL TANK

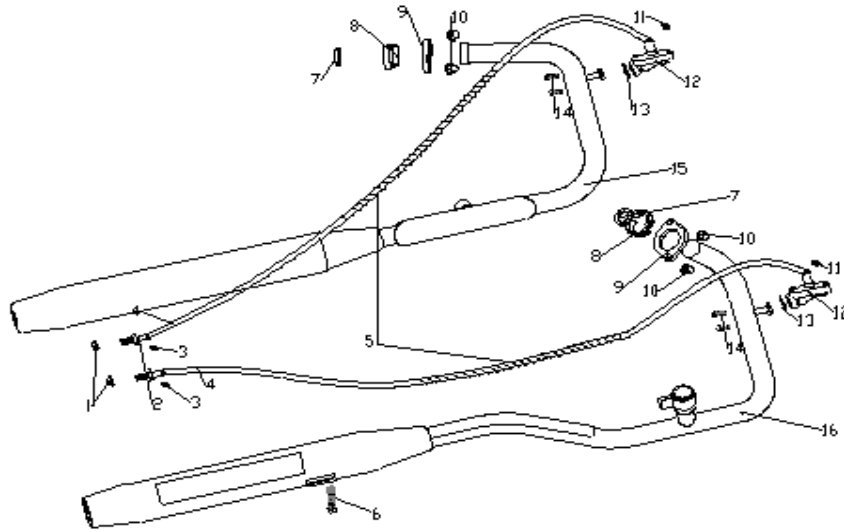
REF. NO.	PART NO.	DESCRIPTION	Q.T.Y	
1	F0601	Plastic Cover , oil meter	1	
2	F0602	Cap,fuel tank	1	
3	F0603	Screw M6×12	2	
4	F0604	Protected cover, meter	1	
5	F0605	Cover, fuel indicator	1	
6	F0606	Screw ST2.9X8	7	
7	F0607	Circlip	1	
8	F0608	Base, fuel meter	1	
9	F0609	Electronic parts assy.	1	
10	F0610	Cover, fuel meter	1	
11	F0611	Screw ST4.9X13	3	
12	F0612	Bolt M6×40	2	
13	F0613	Plate, fuel tank	1	
14	F0614	Rubber Ring	2	
15	F0615	Spacer	2	
16	F0616	Fuel Tank Comp	1	
17	F0617	Cushion	2	
18	F0618	Rubber washer,center	1	
19	F0619	Clip	2	
20	F0620	Hose	1	
21	F0621	Bolt M6×16	2	
22	F0622	Rubber, Seal	1	
23	F0623	Fuel level sensor	1	
24	F0624	Cushion	2	
25	F0625	Fuel meter Comp.	1	
26	F0626	OIL METER	1	

27	F0627	FUEL SENSOR	1
----	-------	-------------	---



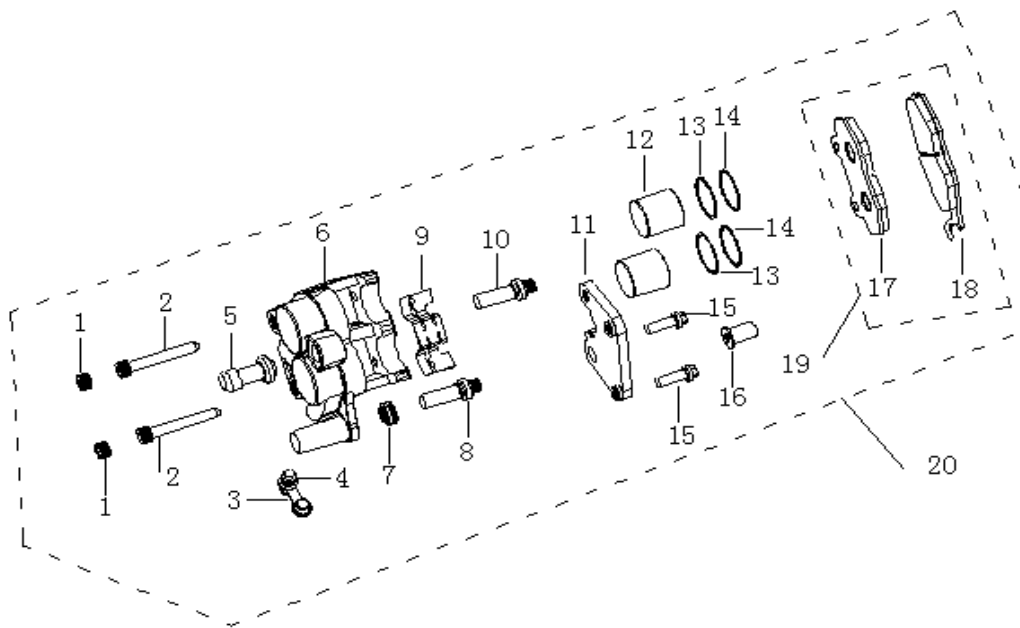
F-7 AIR CLEANER

REF. NO.	PART NO.	DESCRIPTION	Q.T.Y .T
A	F07A	Air Filter assy.	1
1	F0701	Screw st3.9x16	20
2	F0702	Filter core	20
3	F0703	Bracket,Filter core	20
4	F0704	Filter web	20
5	F0705	Bracket,filter web	20
6	F0706	Screw ST4.8X16	4
7	F0707	Cover, air filter	1
8	F0708	Bolt M6×25	1
9	F0709	Nut M6	1
10	F0710	Washer 6	1
11	F0711	Air Cleaner	1
12	F0712	Hoop	2
13	F0713	Nut M10×1.25	1
14	F0714	BoltM10x20, 2 nd air in	3
15	F0715	Clamp φ 10	2
16	F0716	Pipe, intake air,engine	1



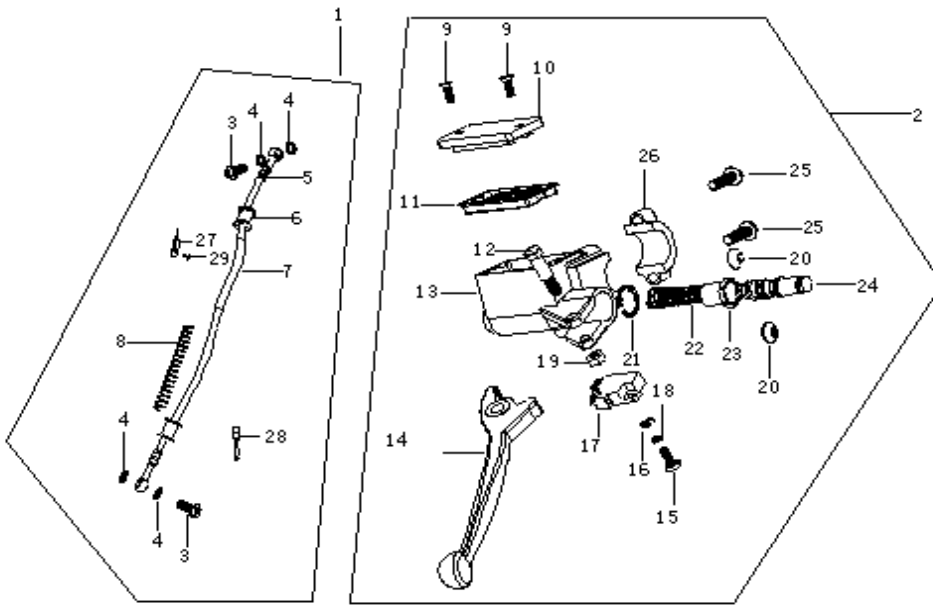
F-8 EXHAUST MUFFLER

REF. NO.	PART NO.	DESCRIPTION	Q.T.Y	.T
1	F0801	Nut M10×1.25	2	
2	F0802	Bolt M10x20	2	
3	F0803	Clamp ϕ 10	2	
4	F0804	Rubber pipe, 2 nd air in	2	
5	F0805	Spring,decoration	2	
6	F0806	Bolt M10x1.25x30	1	
7	F0807	Washer, copper	40	
8	F0808	Clamp	2	
9	F0809	Flange	2	
10	F0810	Nut M8	4	
11	F0811	Clamp ϕ 12	2	
12	F0812	Valve, 2 nd air in	2	
13	F0813	Gasket	2	
14	F0814	Bolt M6×16	4	
15	F0815	Vent-pipe RH	6	
16	F0816	Vent-pipe LH	6	



F-9 LOWER PUMP ASSY

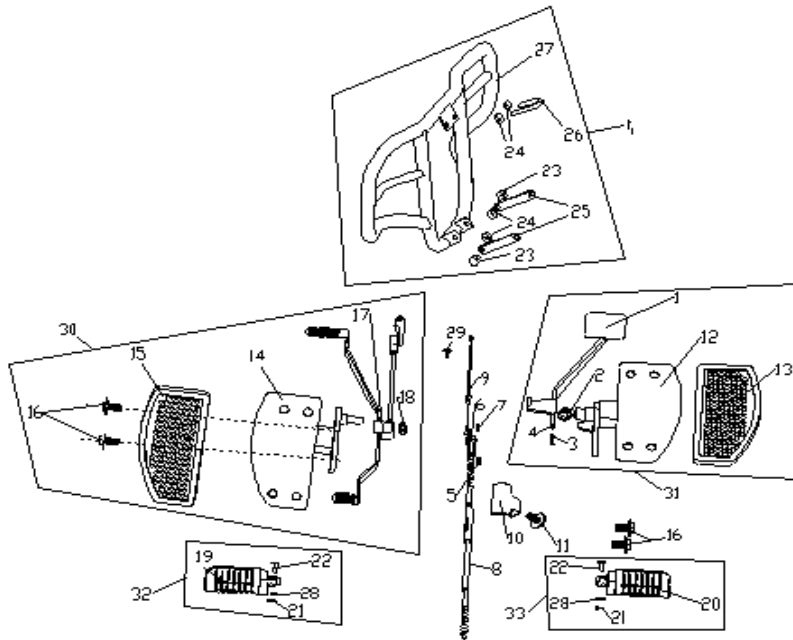
REF. NO.	PART NO.	DESCRIPTION	Q.T.Y	T
1	F0901	Plug	1	
2	F0902	Bolt,brake	1	
3	F0903	Screw ,oil drain pump	1	
4	F0904	Rubber, oil drain	1	
5	F0905	Amortize jacket	1	
6	F0906	Pump body	1	
7	F0907	Seal ring,install bar	1	
8	F0908	Slide axle,lower	1	
9	F0909	Located sheet	1	
10	F0910	Slide axle,upper	1	
11	F0911	Board	1	
12	F0912	Piston	2	
13	F0913	Seal ring, piston inside	2	
14	F0914	Seal ring,piston outside	2	
15	F0915	Bolt M8x30	2	
16	F0916	Nut	1	
17	F0917	Pad,brake LH	1	
18	F0918	Pad,brake RH	1	
19	F0919	PAD assy.brake,	40	
20	F0920	Pump Assy.lower	1	



F-10 UPPER PUMP ASSY

REF. NO.	PART NO.	DESCRIPTION	Q.T.Y	
1	F1001	Brake pipe, assy.	15	
2	F1002	Pump assy., brake	1	
3	F1003	Bolt, oil tube	2	
4	F1004	Washer, copper	4	
5	F1005	Oil pipe assy. Brake	1	
6	F1006	Rubber ring	2	
7	F1007	Jacket, oil pipe	2	
8	F1008	Spring,brake pipe	2	
9	F1009	Screw M4X10	2	
10	F1010	Cover, general pump	1	
11	F1011	Mold, pump cover	1	
12	F1012	Bolt	1	
13	F1013	Pump, upper brake	1	
14	F1014	Brake handle	20	
15	F1015	Screw M4x10	1	
16	F1016	Circlip	1	
17	F1017	Switch,brake	1	
18	F1018	Circlip	1	
19	F1019	Nut	1	
20	F1020	Rubber socket, total pump	1	
21	F1021	Circlip	1	
22	F1022	Spring	1	
23	F1023	Seal jacket	1	
24	F1024	Piston ,Total pump	1	
25	F1025	Bolt M6x22	2	
26	F1026	Socket Install	1	

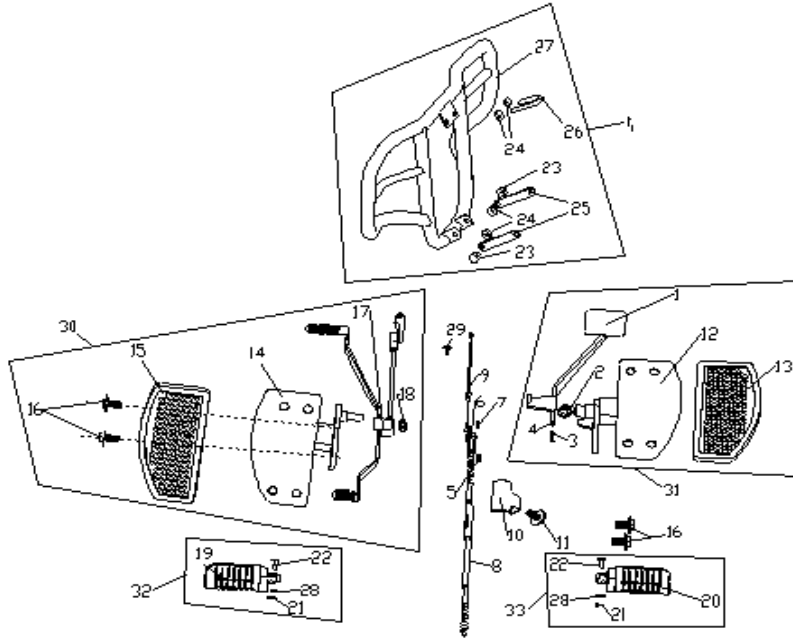
27	F1027	Clamp, upper	1	
28	F1028	Clamp, lower	1	
29	F1029	Bolt M6x12	1	



F-11 BRAKE PEDAL FOOTREST

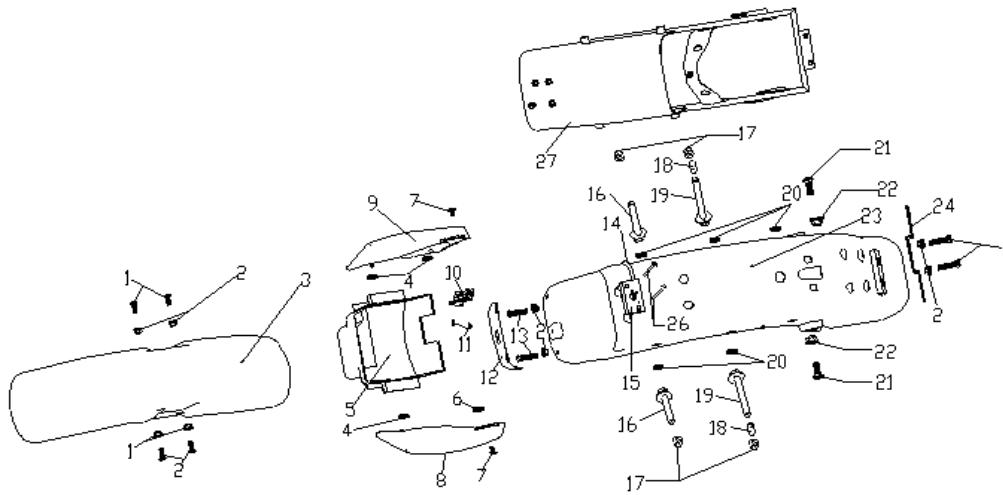
REF. NO.	PART NO.	DESCRIPTION	Q.T.Y	
A	F11A	Bumper Assy.	1	
1	F1101	Middle Pedal, brake RH	1	
2	F1102	Spring, pedal	1	
3	F1103	Bolt M8x25	1	
4	F1104	Nut M8	1	
5	F1105	"E" Rings 15	1	
6	F1106	Pin 6x16	1	
7	F1107	Cotter pin 2.0x16	1	
8	F1108	Brake Control Caple, rear	1	
9	F1109	Switch Caple, RR Brake	1	
10	F1110	Protecting Jacket, brake RR	1	
11	F1111	Bolt M6x12	1	
12	F1112	Front Footrest, RH	1	
13	F1113	Rubber, RH Pedal	1	
14	F1114	Pedal, LH	1	
15	F1115	Rubber, LH pedal	1	
16	F1116	Bolt M8x20	4	
17	F1117	Gearshift Control Lever	10	
18	F1118	Uncork circlip 12	1	
19	F1119	Rear Footrest, LH	1	
20	F1120	Rear Footrest, RH	1	
21	F1121	Cotter pin 2.0x16	2	
22	F1122	Pin 6x35	2	

23	F1123	Bolt M8×12	2	
24	F1124	Nut M8	4	
25	F1125	Connecting Plate	2	
26	F1126	Bracket Fixture	1	
27	F1127	Bumper	1	
28	F1128	Flat washer 6	2	
29	F1129	Bolt M6x20	1	



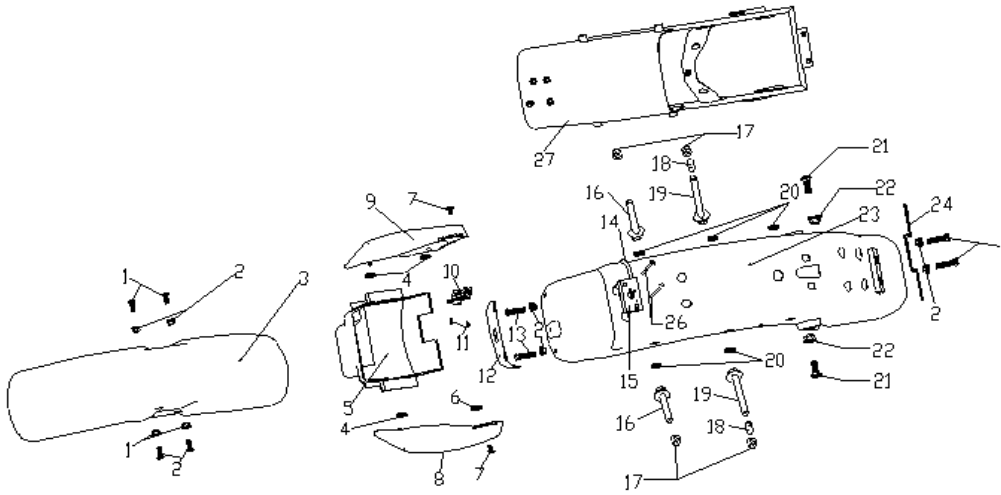
F-11 BRAKE PEDAL-FOOTREST

REF. NO.	PART NO.	DESCRIPTION	Q.T.Y	
30	F1130	GEAR FOOTPLATE	1	
31	F1131	Rear brake footplate	1	
32	F1132	Footrest,RL	1	
33	F1133	Footresr,RR	1	



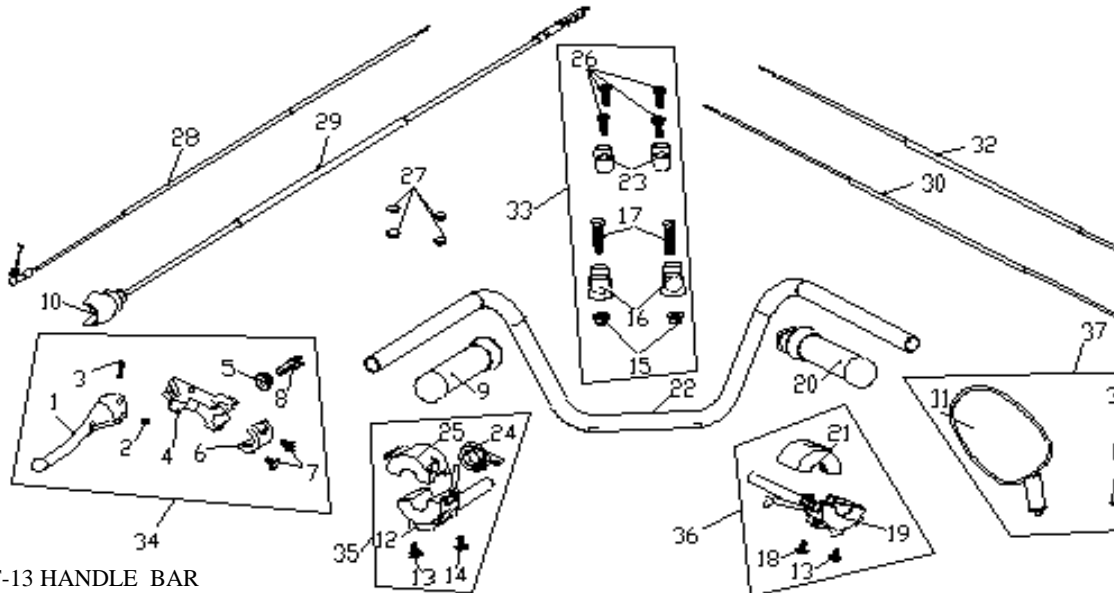
F-12 BODY COVER

REF. NO.	PART NO.	DESCRIPTION	Q.T.Y	.T
1	F1201	Bolt M6×35	4	
2	F1202	Nut M6	8	
3	F1203	Fender, front	1	
4	F1204	Rubber Washer, side cover	3	
5	F1205	Box, tools	1	
6	F1206	Rubber Washer, side cover lower	1	
7	F1207	Screw M6×12	2	
8	F1208	Cover, side LH	1	
9	F1209	Cover, side RH	1	
10	F1210	Lock, seat	1	
11	F1211	Screw ST3.9×9.5	2	
12	F1212	Flap	1	
13	F1213	Bolt M6×14	2	
14	F1214	Cable, seat lock	1	
15	F1215	Holder, seat lock	1	
16	F1216	Screw M8×60	2	
17	F1217	Nut M8	4	



F-12 BODY COVER

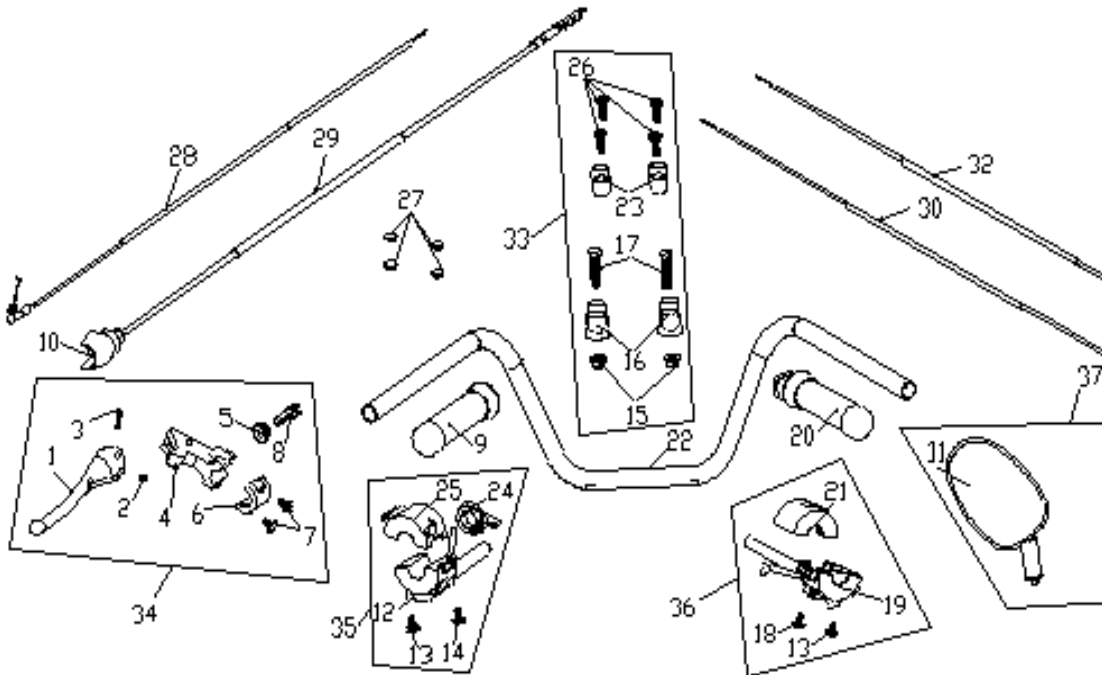
REF. NO.	PART NO.	DESCRIPTION	Q.T.Y	.T
18	F1218	Bushing	2	
19	F1219	Screw M8×80	2	
20	F1220	Rubber Washer, rear fender	5	
21	F1221	Bolt M10×15	2	
22	F1222	Nut M10	2	
23	F1223	Fender, rear	1	
24	F1224	Holder, rear number plate	1	
25	F1225	Bolt M6×12	2	
26	F1226	Screw M6×40	2	
27	F1227	Holder, rear fender	1	



F-13 HANDLE BAR

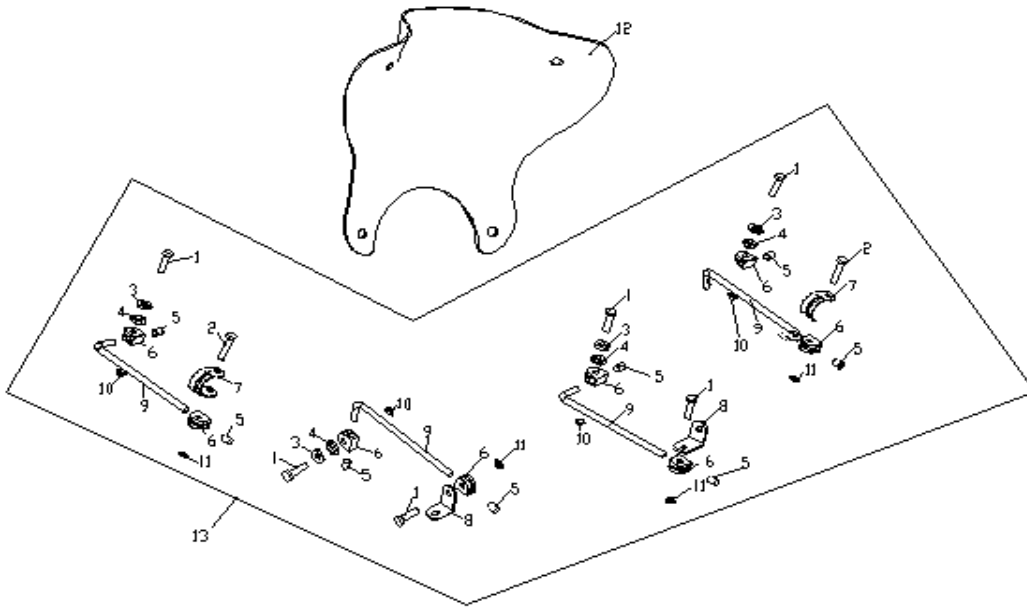
REF. NO.	PART NO.	DESCRIPTION	Q.T.Y	T
1	F1301	Grip, LH	1	
2	F1302	Scrw M6x28	1	
3	F1303	Nut M6	1	
4	F1304	Base , grip LH	1	
5	F1305	Adjust nut	1	
6	F1306	Cover, holder LH	1	
7	F1307	Bolt M6×25	2	
8	F1308	Adjusted bolt	1	
9	F1309	Grip jacket, LH	1	
10	F1310	Cable cover, clutch	1	
11	F1311	Mirror, LH	1	
12	F1312	Base, handle LH lower	1	
13	F1313	Screw M5×32	2	
14	F1314	Screw M5×45	1	
15	F1315	Nut	2	
16	F1316	Fixed base, steering rod lower	2	
17	F1317	Bolt M10×1.25×40	2	
18	F1318	Screw M5×20	1	
19	F1319	Base, handle RH lower	1	
20	F1320	Grip Cover, throttle	1	
21	F1321	Base, handle RH upper	1	
22	F1322	Handle Bar	1	
23	F1323	Clamp, handle bar	2	
24				
28				
29	F1324	Spanner, throttle	1	
30				
25	F1325	Base, handle LH upper	1	
26	F1326	Bolt M8×25	4	

27	F1327	Cover, waterproof	4	
28	F1328	Cable, throttle valve	1	
29	F1329	Cable, clutch	30	



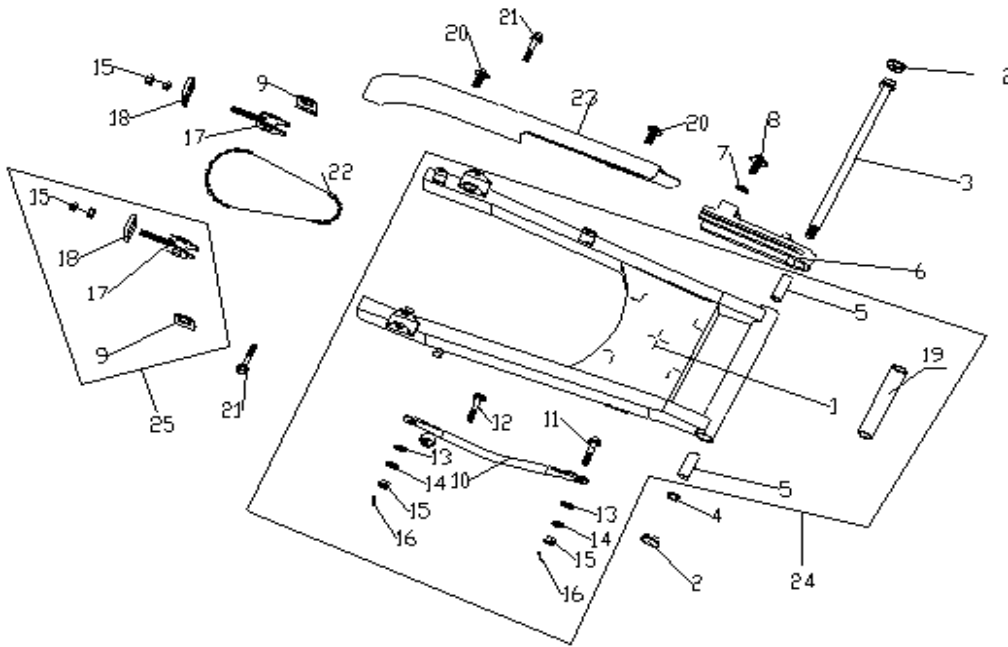
F-13 HANDLE BAR

REF. NO.	PART NO.	DESCRIPTION	Q.T.Y	.T
30	F1330	Cable, throttle upper M10×1.25	20	
31	F1331	Mirror Assy rear view RH	1	
32	F1332	Cable, throttle lower M12×1	20	
33	F1333	Clamp,front holder	1	
34	F1334	Handle bar,LH	1	
35	F1335	Brake handle,LH	1	
36	F1336	Brake handle,RH	1	
37	F1337	Rear view mirroe	1	



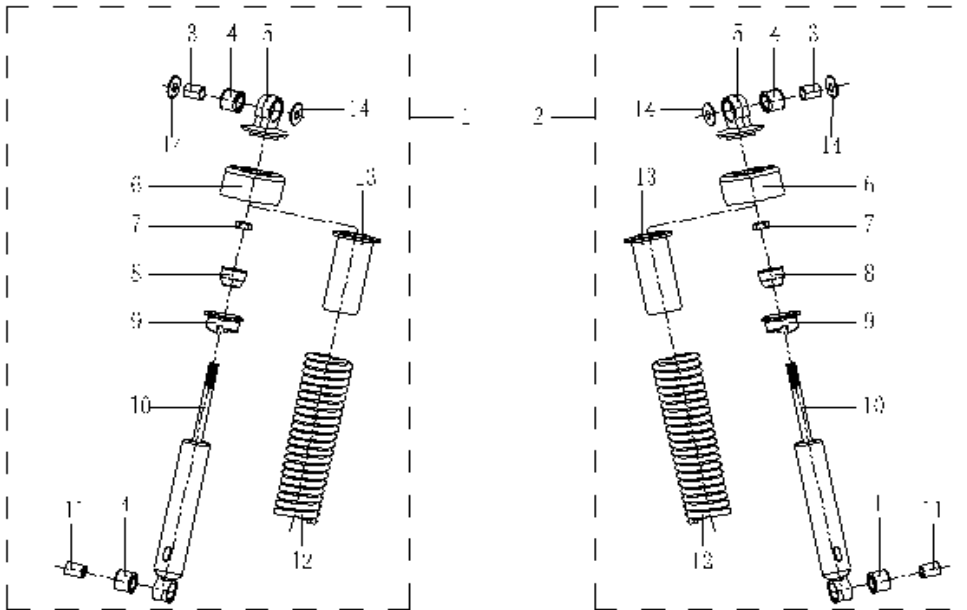
F-14 WINDSHIED GIASS

REF. NO.	PART NO.	DESCRIPTION	Q.T.Y	
1	F1401	Bolt M8x30	6	
2	F1402	Bolt M8x40	2	
3	F1403	Rubber I	4	
4	F1404	Rubber II	4	
5	F1405	Cap ,decorated	8	
6	F1406	Block	8	
7	F1407	Installed rod	2	
8	F1408	Joint bar	2	
9	F1409	Install pole, windglass	4	
10	F1410	Nut M8	4	
11	F1411	Nut M8	4	
12	F1412	Windshield	1	
13	F1413	Parts,windshield	1	



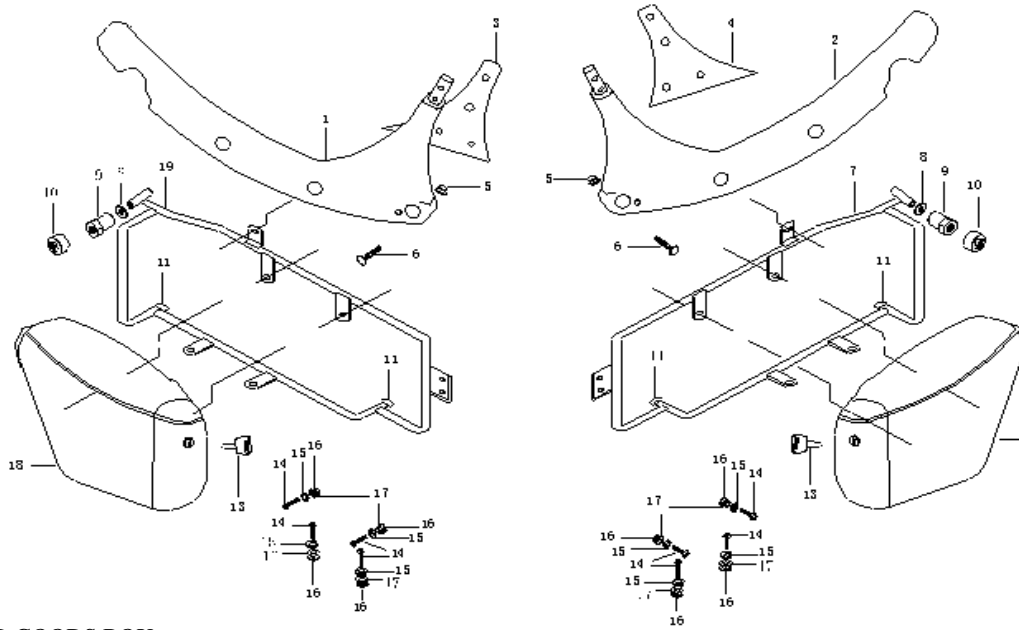
F-15 REAR ARM SUSPENSION

REF. NO.	PART NO.	DESCRIPTION	Q.T.Y	T
1	F1501	Swinging Arm, rear	1	
2	F1502	Cover, swinging arm shaft	2	
3	F1503	Shaft, swinging arm	1	
4	F1504	Nut M14×1.25	1	
5	F1505	Bush	2	
6	F1506	Rubber, chain	1	
7	F1507	Washer 6	1	
8	F1508	Bolt M6×8	1	
9	F1509	Scale-plate	2	
10	F1510	Torque Link, rear	1	
11	F1511	Bolt	1	
12	F1512	Bolt	1	
13	F1513	Washer 8	2	
14	F1514	Spring Washer 8	2	
15	F1515	Nut M8	6	
16	F1516	Cotter pin 2.0×16	2	
17	F1517	Adjustor, chain	2	
18	F1518	Plate, chain adjustor	2	
19	F1519	Tube, fork	1	
20	F1520	Bolt M6×8	2	
21	F1521	Bolt M10×1.25×35	2	
22	F1522	Chain, 10ANH-106	10	
23	F1523	Case, chain	1	
24	F1524	Swinging arm, rear	10	
25	F1525	Chain adjust	2	



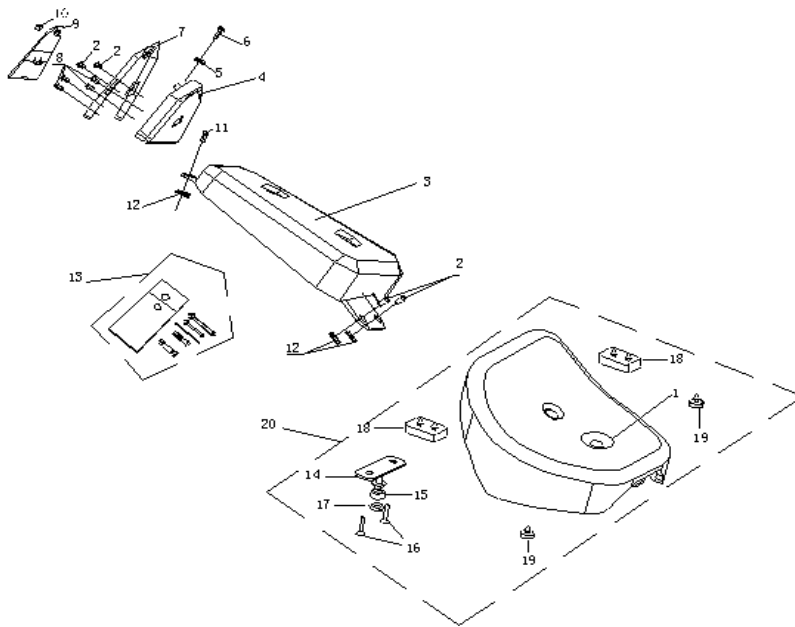
F-16 REAR ABSORBER

REF. NO.	PART NO.	DESCRIPTION	Q.T.Y	.T
1	F1601	Shock absorber assy.LH	1	
2	F1602	Shock absorber assy.RH	1	
3	F1603	Tube, shock absorber upper	2	
4	F1604	Bushing, absorber RR	4	
5	F1605	Joint upper	2	
6	F1606	Cover, Dirtproof	2	
7	F1607	NUT M10X1.5	2	
8	F1608	Rubber	2	
9	F1609	Adjustor	2	
10	F1610	Damper	2	
11	F1611	Tube,rear shock absorber	2	
12	F1612	Spring	2	
13	F1613	Joint	2	
14	F1614	Washer 8	4	



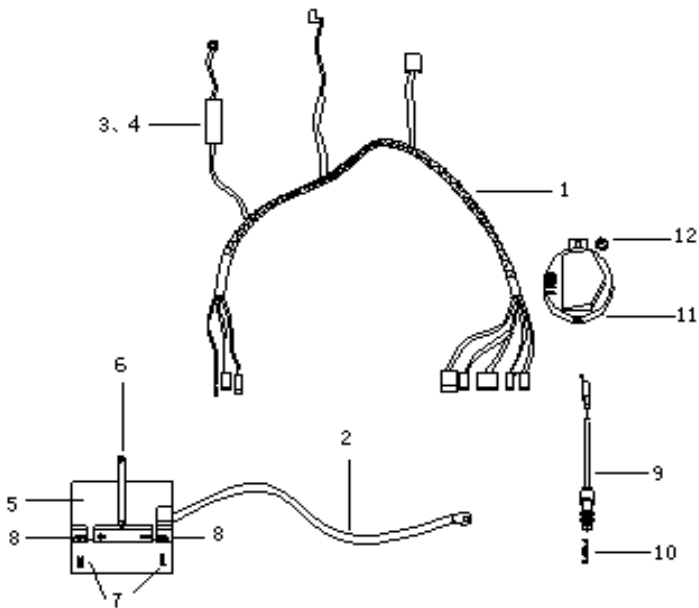
F-17 REAR GOODS BOX

REF. NO.	PART NO.	DESCRIPTION	Q.T.Y	T
1	F1701	Holder, back backrest LH	1	
2	F1702	Holder, back backrest RH	1	
3	F1703	Rubber washer ,holder LH	1	
4	F1704	Rubber washer, holder RH	1	
5	F1705	Nut M8	2	
6	F1706	Bolt M8x8	2	
7	F1707	Holder, goods box RH	1	
8	F1708	Washer		
9	F1709	Front fixed cover, side box	2	
10	F1710	Cap, rubber	2	
11	F1711	Block ,side box holder	4	
12	F1712	Goods Box RH	1	
13	F1713	Key	2	
14	F1714	Screw M6x24	8	
15	F1715	Washer 6	8	
16	F1716	Bushing	8	
17	F1717	Rubber Washer	8	
18	F1718	Goods Box LH	1	
19	F1719	Holder, goods box LH	1	



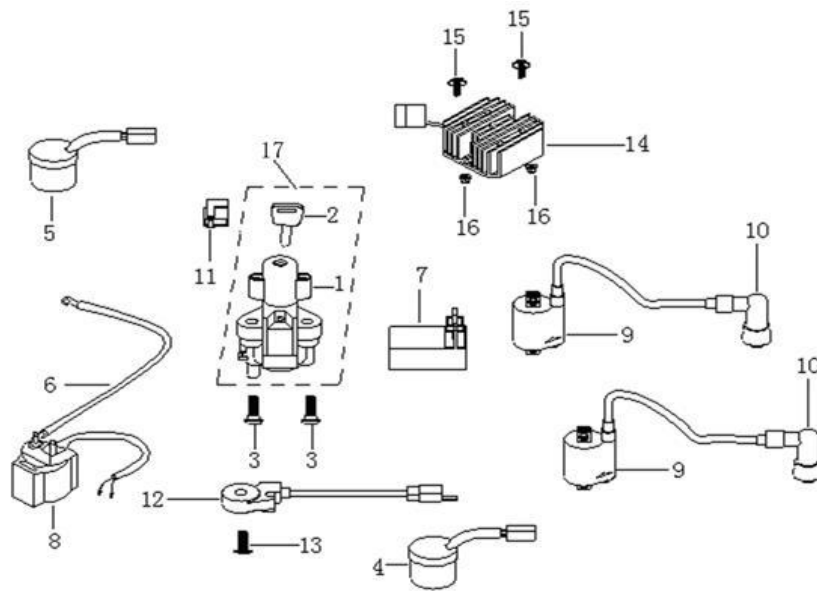
F-18 SEAT

REF. NO.	PART NO.	DESCRIPTION	Q.T.Y	T
1	F1801	Cushion , front	1	
2	F1802	Bolt M6×16	4	
3	F1803	Seat, rear	1	
4	F1804	Backrest, rear	1	
5	F1805	Clamp	1	
6	F1806	Screw ST4.8X16	1	
7	F1807	Holder	1	
8	F1808	Bolt M6×12	4	
9	F1809	Cover, small backrest	1	
10	F1810	Nut M6	1	
11	F1811	Bolt M8×16	1	
12	F1812	Pad, rubber	3	
13	F1813	Box, tool	1	
14	F1814	lockup	1	
15	F1815	Rubber	1	
16	F1816	Screw M6X16	2	
17	F1817	Flat washer	1	
18	F1818	Rubber,rectangle	2	
19	F1819	Rubber ,round	2	
20	F1820	Front seat	1	



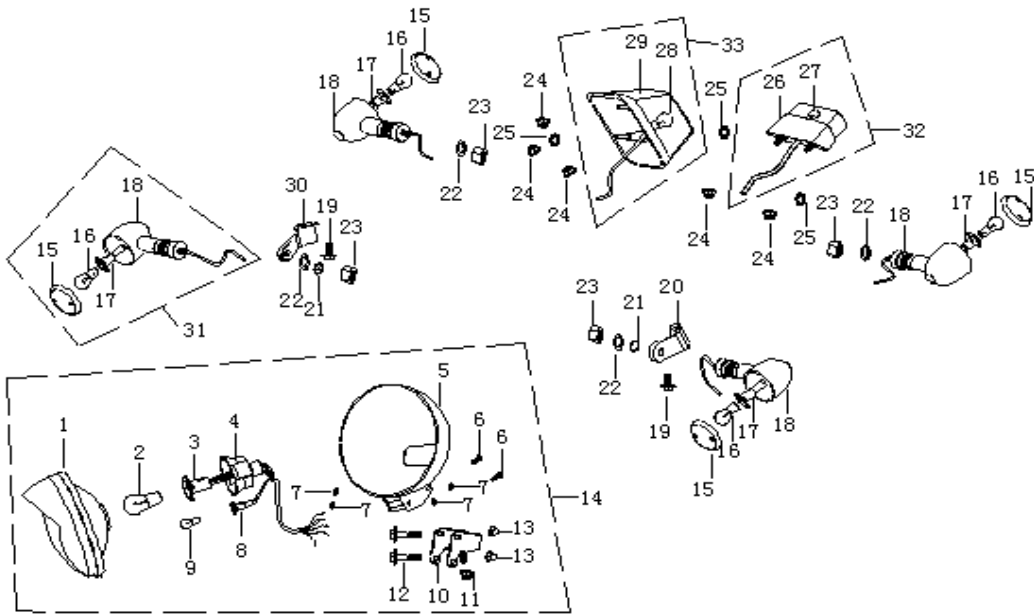
F-19 POWER WIRE

REF. NO.	PART NO.	DESCRIPTION	Q.T.Y	
1	F1901	Wire, power	5	
2	F1902	Wire, earth	1	
3	F1903	Fuse	2	
4	F1904	Box, fuse	1	
5	F1905	Battery	1	
6	F1906	Band, battery	1	
7	F1907	Bolt M6×12	2	
8	F1908	Nut M6	2	
9	F1909	Switch, rear brake	1	
10	F1910	Spring, rear brake	1	
11	F1911	Horn	1	
12	F1912	Bolt M8×12	1	



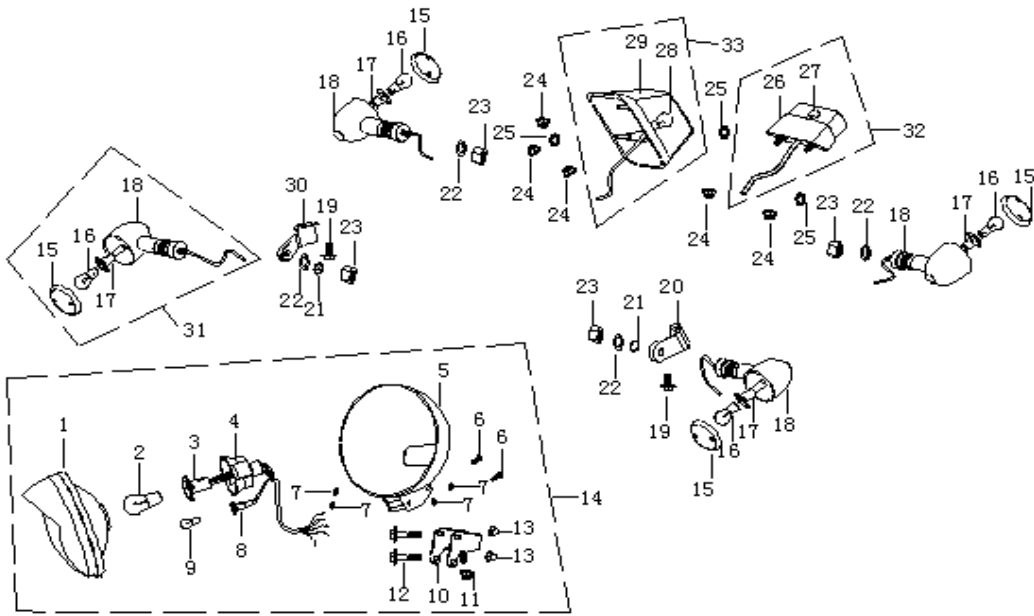
F-20 IGNITION SYSTEM

REF. NO.	PART NO.	DESCRIPTION	Q.T.Y	
1	F2001	Main switch	1	
2	F2002	Key	2	
3	F2003	Screw M8×30	2	
4	F2004	Relay, protection	10	
5	F2005	Relay, protect	10	
6	F2006	Wire, power	1	
7	F2007	CDI unit	6	
8	F2008	Relay,start	1	
9	F2009	Coil, ignition	10	
10	F2010	Cap, high pressure	20	
11	F2011	Diode	1	
12	F2012	Switch, side standing	1	
13	F2013	Screw M6×20	1	
14	F2014	Rectifier	10	
15	F2015	Bolt M6×16	2	
16	F2016	Nut M6	2	
17	F2017	IGNITION SWITCH	1	



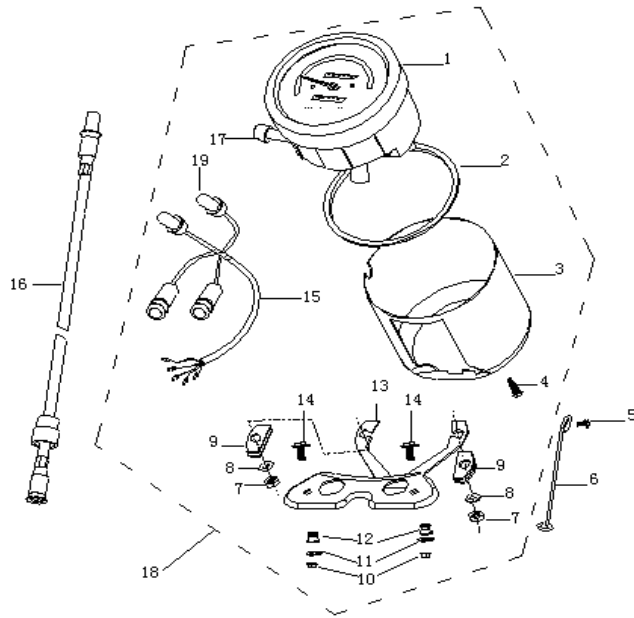
F-21 LIGHTING-LIGHT-SIGNALLING

REF. NO.	PART NO.	DESCRIPTION	Q.T.Y	T
1	F2101	Cover assy. Head lamp	1	
2	F2102	Bulb	1	
3	F2103	Socket, bulb	1	
4	F2104	Rubber, lamp	1	
5	F2105	Rear cover, headlamp	1	
6	F2106	Screw M4X12	1	
7	F2107	Rubber washer	1	
8	F2108	Faucet, position lamp	1	
9	F2109	Bulb ,position lamp	1	
10	F2110	Holder, head lamp	1	
11	F2111	Nut M10×1.5	1	
12	F2112	Bolt M6×50	2	
13	F2113	Nut M6	2	
14	F2114	Headlamp assy.	1	
15	F2115	Protect cover, turning lamp	4	
16	F2116	Bulb, turning lamp	4	
17	F2117	Socket, turn lamp	4	
18	F2118	Shell, turn lamp	4	
19	F2119	Bolt M6×12	2	
20	F2120	Holder, directionlight LH	1	
21	F2121	Washer 10	2	
22	F2122	Plain Washer 10	4	



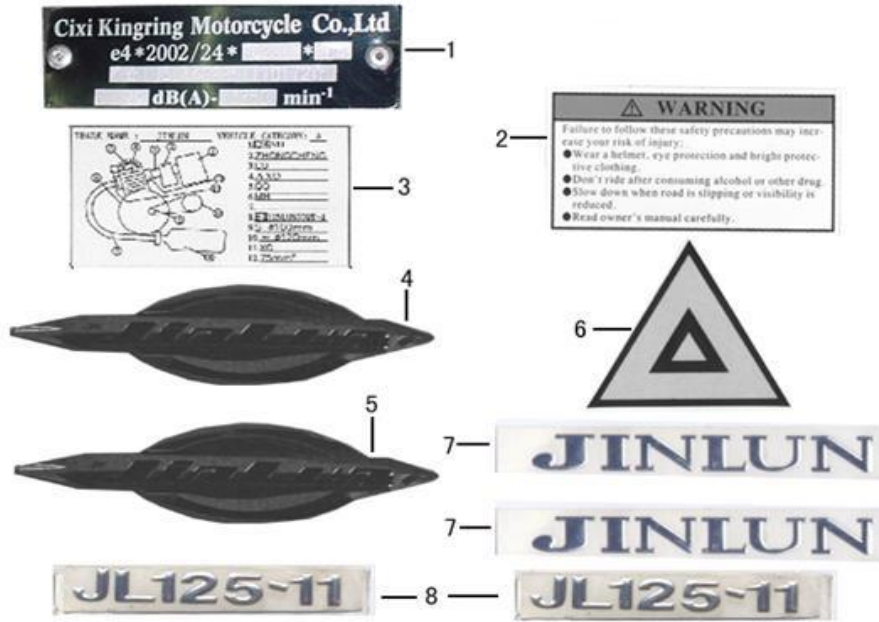
F-21 LIGHTING-LIGHT-SIGNALLING

REF. NO.	PART NO.	DESCRIPTION	Q.T.Y	.T
23	F2123	Nut M10×1.5	4	
24	F2124	Nut M6	5	
25	F2125	Washer 6	3	
26	F2126	Rear Number-plate Light	1	
27	F2127	Bulb ,rear license	1	
28	F2128	Tail Light	1	
29	F2129	Bulb ,rear lamp	1	
30	F2130	Holder, turn lamp RH FR	1	
31	F2131	Turning light assy.	4	
32	F2132	Licence light	1	
33	F2133	Tail light	1	



F-22 SPEEDOMETER

REF. NO.	PART NO.	DESCRIPTION	Q.T.Y	
1	F2201	Cover inside, meter	1	
2	F2202	Bushing ,meter	1	
3	F2203	Cover, meter	1	
4	F2204	Screw	1	
5	F2205	Bolt M6×8	1	
6	F2206	Clip, speedometer	1	
7	F2207	Nut M5	2	
8	F2208	Washer 5	2	
9	F2209	Rubber	2	
10	F2210	Nut M6	2	
11	F2211	Plain Washer 6	2	
12	F2212	Cushion	2	
13	F2213	Bracket, meter	1	
14	F2214	Bolt M6×30	2	
15	F2215	Wire, meter	1	
16	F2216	Cable, shaft	1	
17	F2217	Button, meter	20	
18	F2218	Meter assy.	1	
19	F2219	Bulb ,indication	4	



F-23 Mark

REF.NO.	PART NO.	DESCRIPTION	Q.T.Y	
1	F2301		1	
2	F2302		1	
3	F2303		1	
4	F2304	Marauder (inscription)	20	
5	F2305	Marauder (inscription)	20	
6	F2306		1	
7	F2307		20	
8	F2308		20	