

PARTS CATALOGUE

JL125T-13 MOTORCYCLE

CIXI KINGRING MOTORCYCLE CO.,LTD.

INDEX

E-1	CRANK CASE	1
E-2	CYLINDER HEAD COVER	2
E-3	CYLINDER	3
E-4	RIGHT CRANKCASE COVER	4
E-5	CARBURETOR	5
E-6	DRIVE PULLEY	7
E-7	STARTING MOTOR	8
E-8	FAN COVER·SHROUD	9
E-9	TRANSMISSION.....	10
E-10	CYLINDER HEAD	11
E-11	CAMSHAFT·VALVE	12
E-12	CAM CHAIN·TENSIONER	13
E-13	GENERATOR	14
E-14	OIL PUMP	15
E-15	LEFT CRANKCASE COVER	16
E-16	DRIVEN PULLY	17
E-17	CRANK SHAFT·PISTON	18
F-1	HEADLIGHT.....	19
F-2	SPEEDOMETER	20
F-3	HANDLE STEERING	21

F-4	FRONT BRAKE ASSY.....	24
F-5	FRONT FORK·FLOOR PANEL	25
F-6	FRONT FORK WHEEL	28
F-7	FRONT WHEEL	29
F-8	REAR WHEEL	30
F-9	SEAT	31
F-10	FUEL TANK	32
F-11	BATTERY	33
F-12	BODY COVER·LUGGAGE BOX.....	34
F-13	AIR CLEANER.....	37
F-14	EXHAUST MUFFLER.....	38
F-15	KICK START ARM·STAND.....	39
F-16	REAR CUSHION.....	40
F-17	TALL LIGHT·POSTLION LIGHT.....	41
F-18	TAIL LIGHT	42
F-19	WIRE HARNESS.....	43
F-20	FRAME BODY.....	44

Address: Kingring Development Zone, Cixi City, Zhejiang, P.R.China

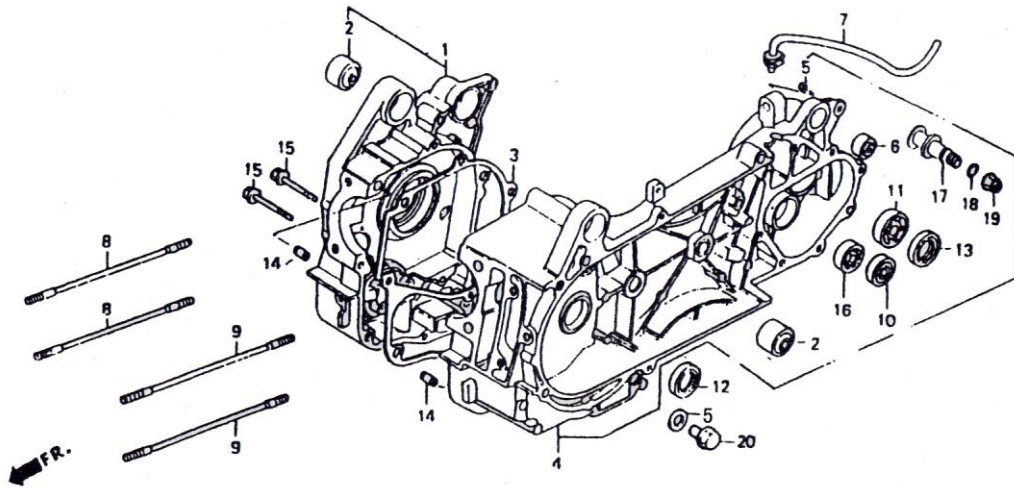
Tel: 86-574-63218692

Fax: 86-574-63218193

Code: 315301

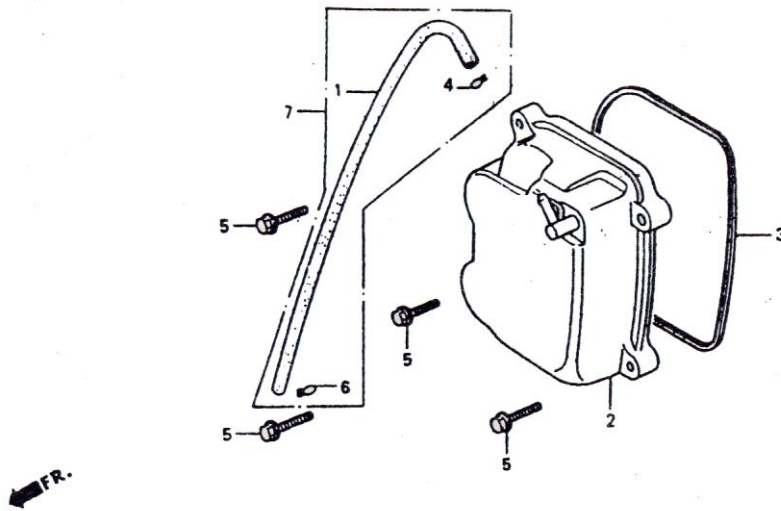
Http: www.kingringmotor.com

Email: motor@kingring.com



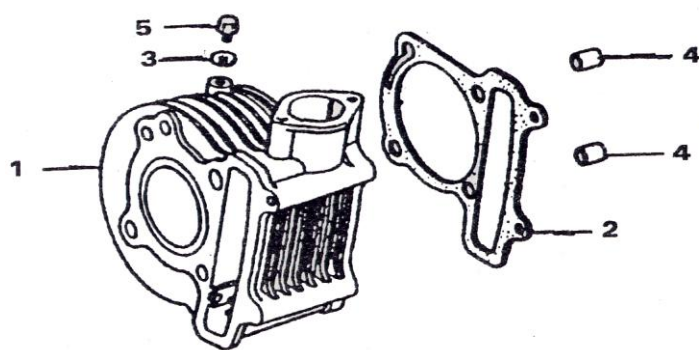
E-1 Crank case

REF.NO.	PART NO.	DESCRIPTION	Q.T.Y
1	E0101	CRANKCASE ASSY R	1
2	E0102	BUSH ENGINE HANGER RUBBER	2
3	E0103	GASKET CRANKCASE	1
4	E0104	CRANKCASE ASSY L	1
5	E0105	WASHER DRAIN PLUG 12MM	1
6	E0106	BUSH RR CUSHION UNDER RUBBER	1
7	E0107	TUBE BREATHER	1
8	E0108	BOLT STUD 8X187.5	2
9	E0109	BOLT STUD 8X195.5	2
10	E0110	BEARING RADIAL BALL 6201	1
11	E0111	BEARING RADIAL BALL 6004UU	1
12	E0112	OIL SEAL 19.8X30X5	1
13	E0113	OIL SEAL 27X42X7	1
14	E0114	PIN DOWEL 8X14	2
15	E0115	BOLT FLANGE 6X50	2
16	E0116	BEARING RADIAL BALL 6002	1
17	E0117	PIN BRAKE SHOE ANCHOR	1
18	E0118	O-RING 7.5X1.5	1
19	E0119	NUT FLANGE 8MM	1
20	E0120	BOLT DRAIN PLUG 12MM	1



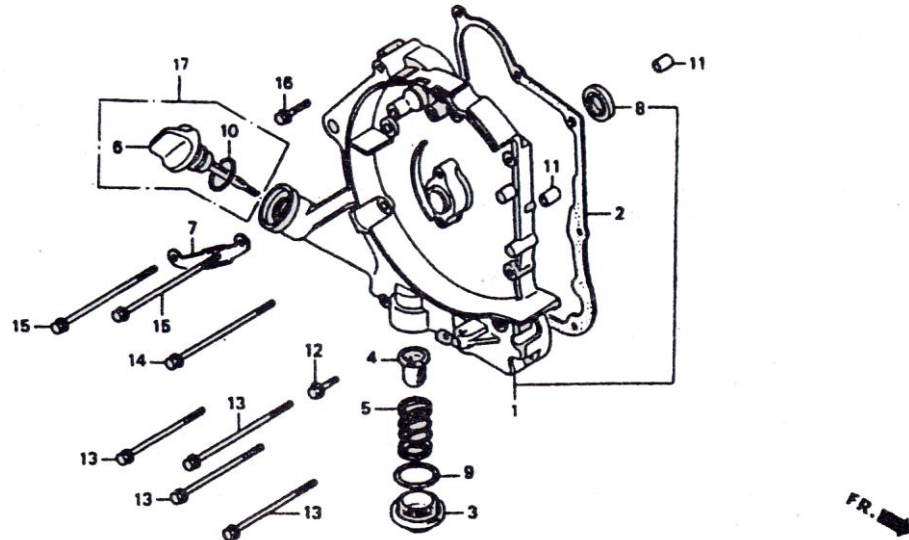
E-2 Cylinder Head Cover

REF.NO.	PART NO.	DESCRIPTION	Q.T.Y
1	E0201	TUBE BREATHER	1
2	E0202	COVER COMP CYLINDER HEAD	1
3	E0203	CASKET HEAD COVER	1
4	E0204	CLAMP TUBE(D8.5)	2
5	E0205	BOLT FLANGE 6X25	4
6	E0206	CLAMP HEAD COVER	1
7	E0207	TUBE BREATHER ASSY	1



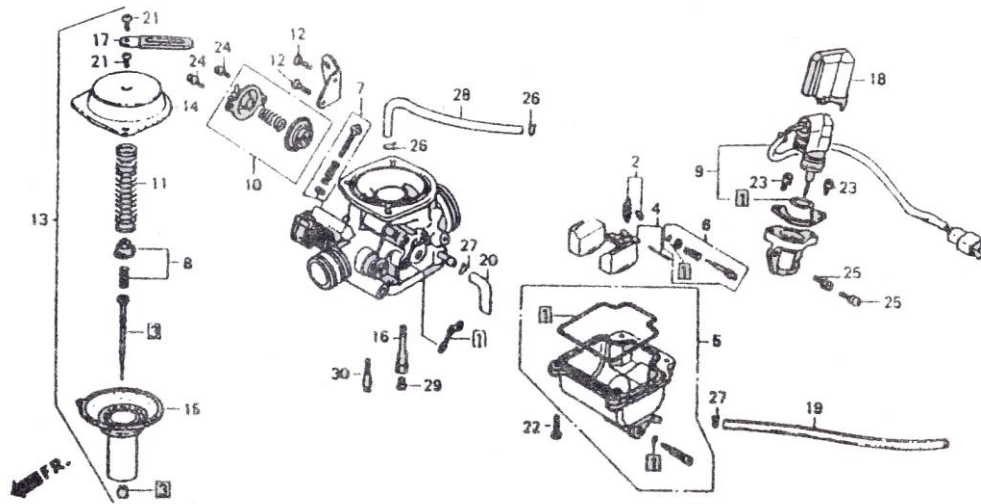
E-3 Cylinder

REF.NO.	PART NO.	DESCRIPTION	Q.T.Y
1	E0301	CYLINDER COMP	1
2	E0302	GASKET CYLINDER	1
3	E0303	WASHER SEALING 6.5MM	1
4	E0304	PIN DOEWL 10X16	2
5	E0305	BOLT FLANG 6X12	1



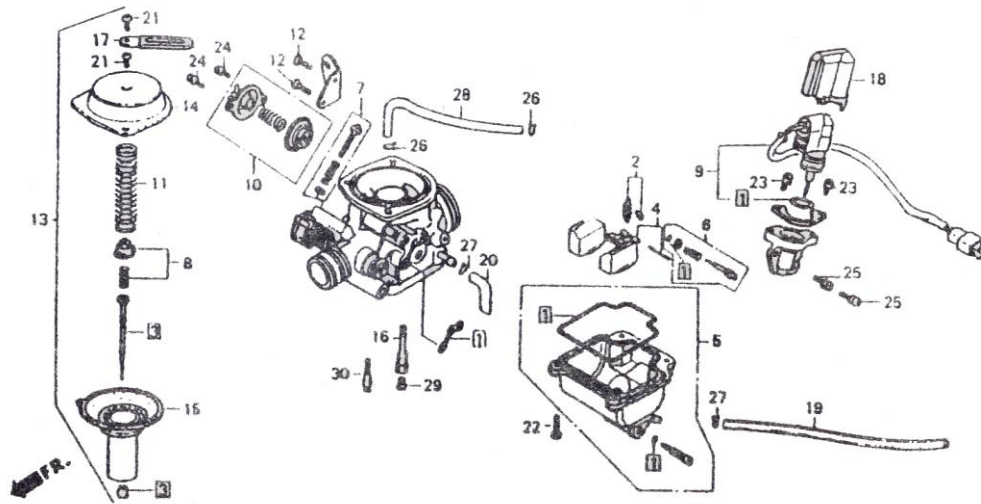
E-4 Right Crankcase Cover

REF.NO.	PART NO.	DESCRIPTION	Q.T.Y
1	E0401	COVER R CRANKCASE COMP	1
2	E0402	GASKET R CRANKCASE COVER	1
3	E0403	COVER OIL FILTER	1
4	E0404	SCREEN OIL FILTER	1
5	E0405	SPRING OIL FILTER SCREEN	1
6	E0406	GAUGE OIL LEVEL	1
7	E0407	CLAMPER A.C.GENERATOR CORD	1
8	E0408	OIL SEAL 19.8X30X5	1
9	E0409	O-RING 30.8MM	1
10	E0410	O-RING 18X3	1
11	E0411	PIN DOWEL 8X14	2
12	E0412	BOLT FLANGE 6X32	1
13	E0413	BOLT FLANGE 6X95	4
14	E0414	BOLT FLANGE 6X100	1
15	E0415	BOLT FLANGE 6X110	2
16	E0416	BOLT FLANGE 6X40	1



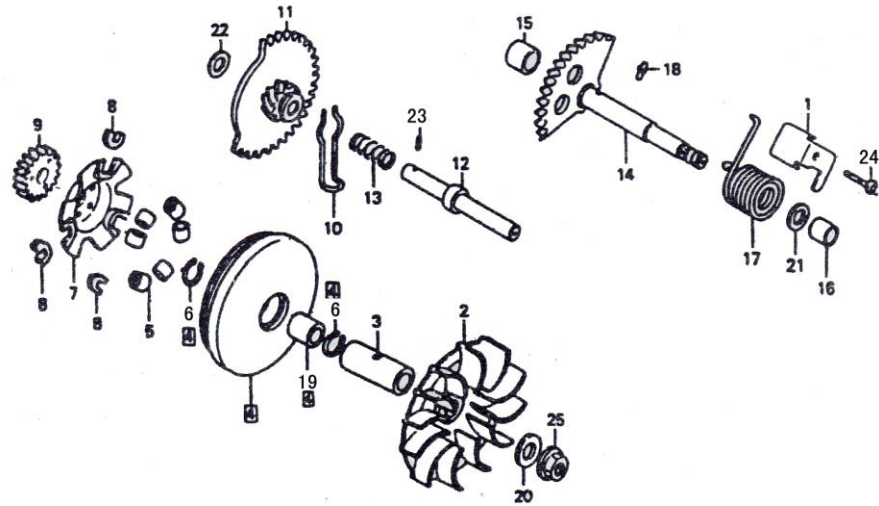
E-5 Carburetor

REF.NO.	PART NO.	DESCRIPTION	Q.T.Y
1	E0501	GASKET SET	1
2	E0502	VALVE SET FLDAT	1
3	E0503	NEEDLE SET JET	1
4	E0504	SET FLDAT	1
5	E0505	CHAMBER SET FLDAT	1
6	E0506	SCREW SET A	1
7	E0507	SCREW SET B	1
8	E0508	PLATE SET VALVE	1
9	E0509	VALVE SET STARTER	1
10	E0510	VALVE SET AIR CUT	1
11	E0511	SPRING COMPRESSION COIL	1
12	E0512	SCREW PAN 5X12	2
13	E0513	CARBURETOR ASSY	1
14	E0514	TOP COMP	1
15	E0515	PISTON COMP VACUUM	1
16	E0516	HOLDER NEEDLE JET	1
17	E0517	CLIP PLATE	1
18	E0518	CAP HOLDER	1
19	E0519	TUBE	1
20	E0520	TUBE	1
21	E0521	SCREW PAN 4X8	2
22	E0522	SCREW PAN 4X14	4
23	E0523	SCREW WASHER 4X8	2
24	E0524	SCREW WASHER 4X10	2
25	E0525	SCREW WASHER 5X12	2
26	E0526	CLIP B7 TUBE	2
27	E0527	CLIP B8 TUBE	2



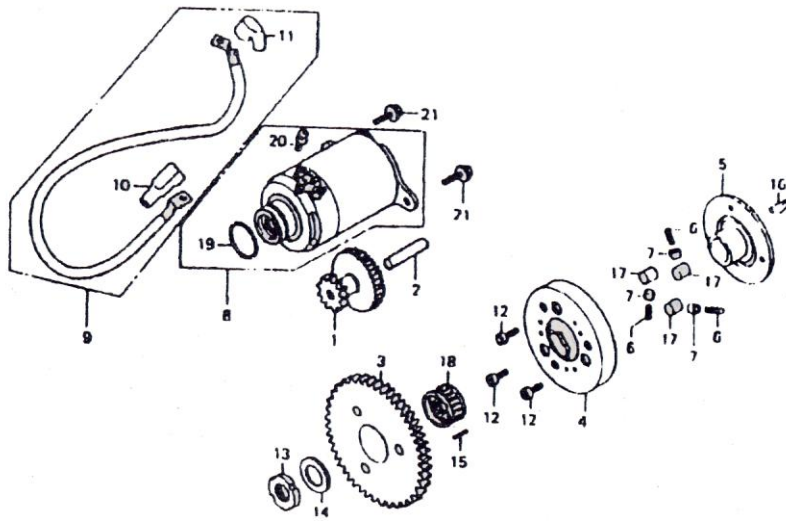
E-5 Carburetor

REF.NO.	PART NO.	DESCRIPTION	Q.T.Y
28	E0528	TUBE 3.5X210	1
29	E0529	JET MAIN #112	1
30	E0530	JET SLOW #35	1



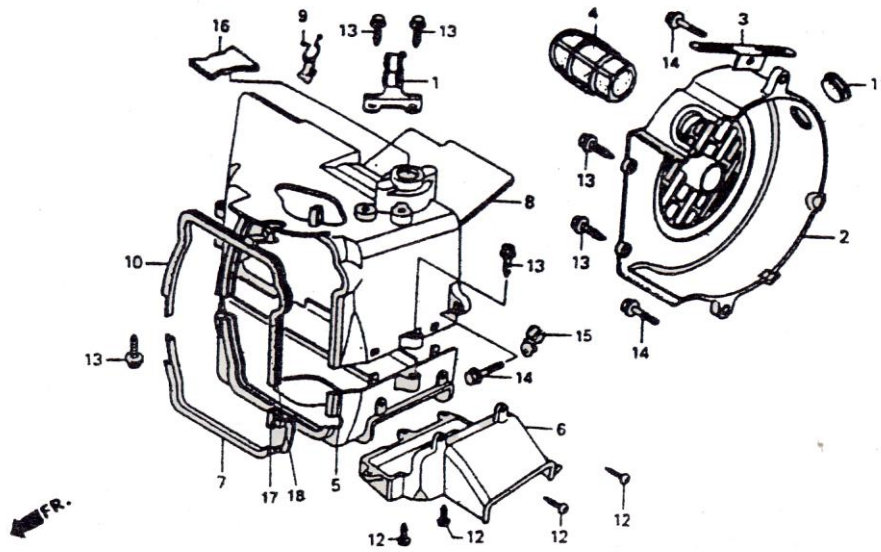
E-6 Drive Pulley

REF.NO.	PART NO.	DESCRIPTION	Q.T.Y
1	E0601	PLATE KICK RETURN STOPPER	1
2	E0602	FACE DRIVE	1
3	E0603	BOSS DRIVE FACE	1
4	E0604	FACE COMP MOVABLE DRIVE	1
5	E0605	ROLLER SET WEIGHT	6
6	E0606	CLIP 28MM	2
7	E0607	PLATE RAMP	1
8	E0608	POECE SLIDE	3
9	E0609	GEAR KICK DRIVEN(20T)	1
10	E0610	SPRING STARTER GEAR FRICTION	1
11	E0611	GRAR COMP STARTER IDLE(13T/49T)	1
12	E0612	SHAFT STARTER IDEL	1
13	E0613	SPRING STARTER IDEL	1
14	E0614	SPINDLE COMP KICK STARTER	1
15	E0615	BUSH 12X16X12	1
16	E0616	BUSH KICK SPINDLE 14X18X16	1
17	E0617	SPRING KICK STARTER	1
18	E0618	PIN SPECIAL 4.5MM	1
19	E0619	COLLAR DRIVE FACE	1
20	E0620	WASHER PLAIN 12MM	1
21	E0621	WASHER 14MM	1
22	E0622	WASHER 12.5MM	1
23	E0623	ROLLER 3X8.5	1
24	E0624	BOLT FLANGE 6X14	1
25	E0625	NUT FLANGE 12MM	1



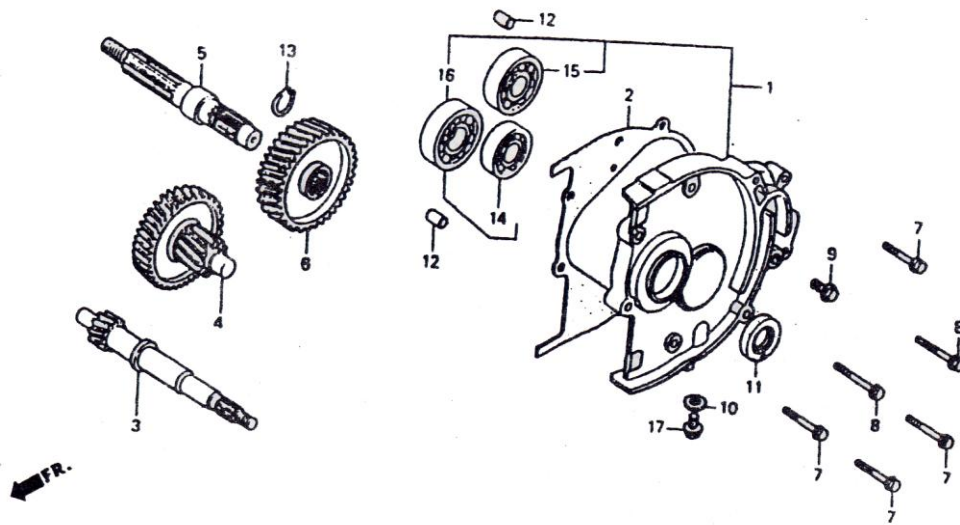
E-7 Starting Motor

REF.NO.	PART NO.	DESCRIPTION	Q.T.Y
1	E0701	GEAR STARTER REDUCTION	1
2	E0702	SHAFT STARTER REDUCTION GEAR	1
3	E0703	GEAR COMP STARTING CLUTCH	1
4	E0704	OUTER COMP STARTING CLUTCH	1
5	E0705	FLANGE STARTING CLUTCH	1
6	E0706	SPRING STARTING CLUTCH ROLLER	3
7	E0707	CAP STARTINGCLUTCH ROLLER SPRING	3
8	E0708	MOTOR ASSY STARTER	1
9	E0709	CABLE STARTER MOTOR	1
10	E0710	CAP RUBBER	1
11	E0711	CAP RUBBER	1
12	E0712	BOLT SOCKET 6X12	3
13	E0713	NUT LOCK 22MM	1
14	E0714	WASHER THRUST 18X31X1	1
15	E0715	PIN DOWEL 5X6	1
16	E0716	KEY WOODRUFF 15X14X4	1
17	E0717	ROLLER 10X10	3
18	E0718	BEARING NEEDLE 28X32X17	1
19	E0719	O-RING 24.4X3.1	1
20	E0720	SCREW-WASHER 6X12	3
21	E0721	BOLT FLANGE 6X20	2



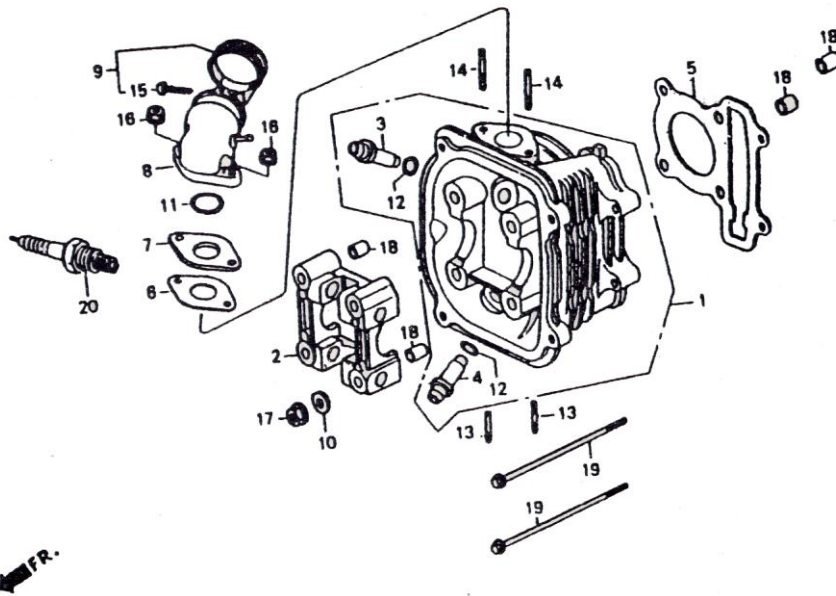
E-8 Fan Cover Shroud

REF.NO.	PART NO.	DESCRIPTION	Q.T.Y
1	E0801	CLAMPER BREATHER TUBE	1
2	E0802	COVER COMP FAN	1
3	E0803	CLAMPER STARTER CABLE	1
4	E0804	DUCT CARBURETOR COOLING	1
5	E0805	SHROUD A	1
6	E0806	DUCT SHROUD	1
7	E0807	SEAL SHROUD(A)	1
8	E0808	SHROUD COMP B	1
9	E0809	CLIP HIGH TENSTON CORD	1
10	E0810	SEAL SHROUD(B)	1
11	E0811	CROMMET B SIDE PANEL	1
12	E0812	SCREW TAPPING 5X12	5
13	E0813	SCREW TAPPING 5X16	6
14	E0814	BOLT FLANGE 6X25	3
15	E0815	CLAMPER OVER FLOW HOSE	1
16	E0816	GROMMET SHROUD(B)	1
17	E0817	SEAL SHROOD	1
18	E0818	SEAL SHROOD	1



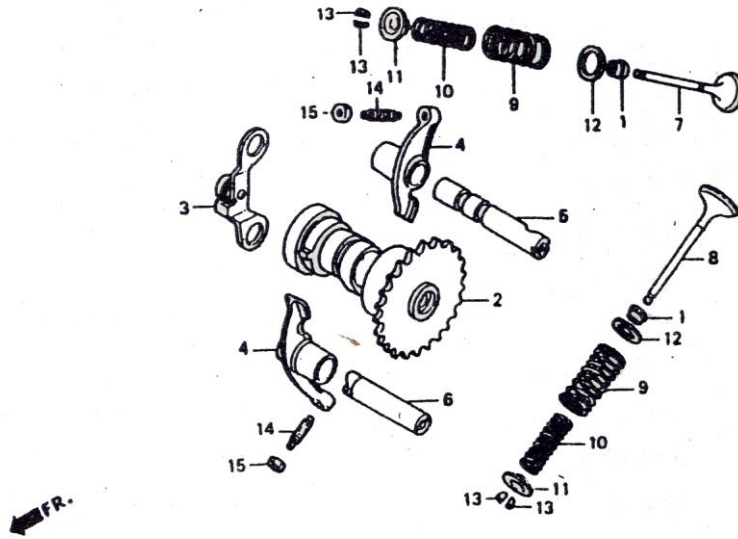
E-9 Transmission

REF.NO.	PART NO.	DESCRIPTION	Q.T.Y
1	E0901	COVER MISSION ASSY	1
2	E0902	GASKET MISSION COVER	1
3	E0903	SHAFT DRIVE	1
4	E0904	SHAFT COMP COUNTER	1
5	E0905	SHAFT FINAL	1
6	E0906	GEAR FINAL	1
7	E0907	BOLT FLANGE 6X28	3
8	E0908	BOLT FLANGE 6X35	3
9	E0909	BOLT SPECIAL 8MM	2
10	E0910	WASHER 8MM	1
11	E0911	OIL SEAL 20X32X6	1
12	E0912	PIN DOWEL 8X14	2
13	E0913	CIR CLIP EXTERNAL 20MM	1
14	E0914	BEARING RADIAL BALL 6202	1
15	E0915	BRARING RADIAL BALL 6203	1
16	E0916	BRARING RADIAL BALL 6204	1



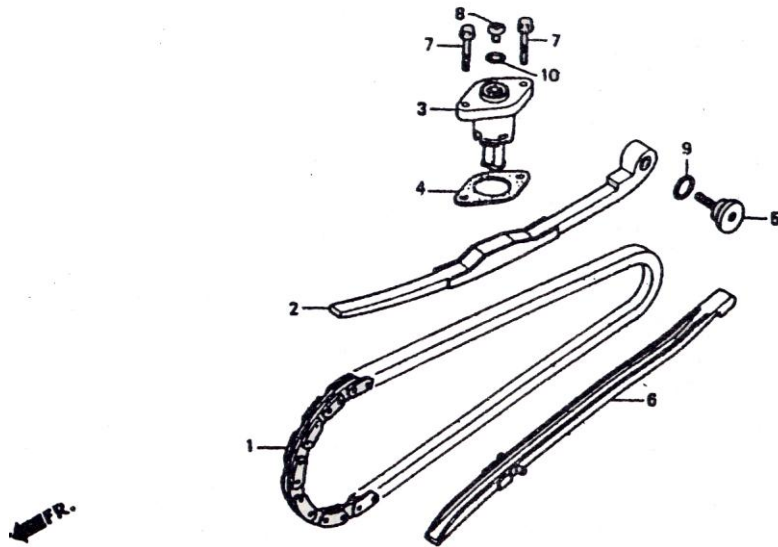
E-10 Cylinder Head

REF.NO.	PART NO.	DESCRIPTION	Q.T.Y
1	E1001	HEAD COMP CYLINDER	1
2	E1002	HOLDER CAMSHAFT	1
3	E1003	GUIDE IN VALVE	1
4	E1004	GUIDE EX VALVE	1
5	E1005	GASKER CYLINDER HEAD	1
6	E1006	GASKRT CARBURETOR INSULATOR	1
7	E1007	INSULATOR CARBURETOR	1
8	E1008	PIPE COMP IN	1
9	E1009	BAND INSULATOR	1
10	E1010	WASHER 8MM	4
11	E1011	O-RING $\phi 27 \times 2.0$	1
12	E1012	O-RING $\phi 9 \times 1.6$	2
13	E1013	BOLT 2 STUD 6X18	2
14	E1014	BOLT STUD 6X50	2
15	E1015	BOLT FLANGE 4X25	1
16	E1016	NUT FLANGE 6MM	2
17	E1017	NUT FLANGE 8MM	4
18	E1018	PON DOWEL 10X16	4
19	E1019	BOLT FLANGE 6X10	2
20	E1020	PLUG SPARK(C7HSA NGK)	1



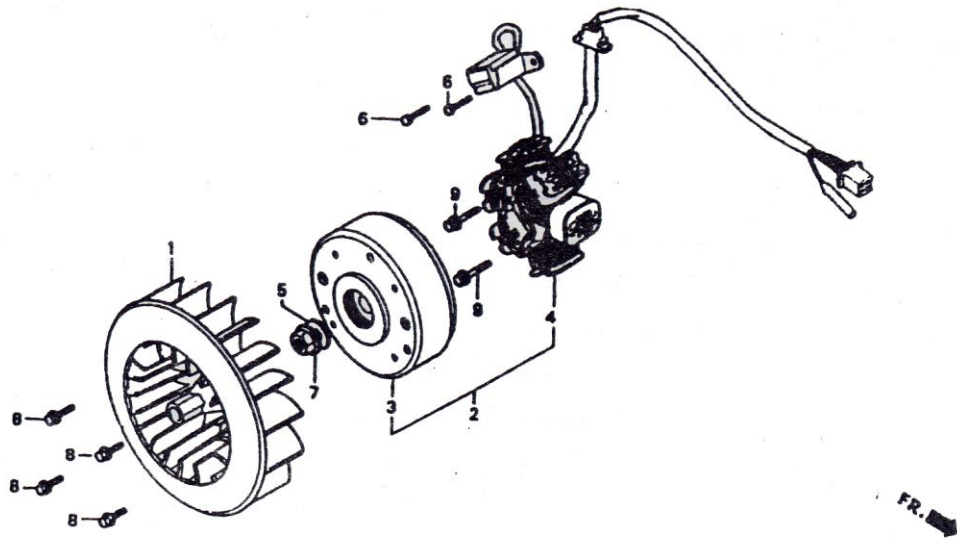
E-11 Camshaft·Valve

REF.NO.	PART NO.	DESCRIPTION	Q.T.Y
1	E1101	SEAL VALVE STEM	2
2	E1102	CAMSHAFT COMP	1
3	E1103	PLATE COMP STOPPER	1
4	E1104	ARM VALVE ROCKER	2
5	E1105	SHAFT COMP IN ROCKER ARM	1
6	E1106	SHAFT EX ROCKER ARM	1
7	E1107	VALVE IN	1
8	E1108	VALVE EX	1
9	E1109	SPRING VALVE OUTER	2
10	E1110	APRING VALVE INNER	2
11	E1111	RETAINER VALVE SPRING	2
12	E1112	SEAT VALVE SPRING OUTER	2
13	E1113	COTTER VALVE	4
14	E1114	SCREW TAPPET AD JUSTING	2
15	E1115	NUT TAPPET AD JUSTING	2



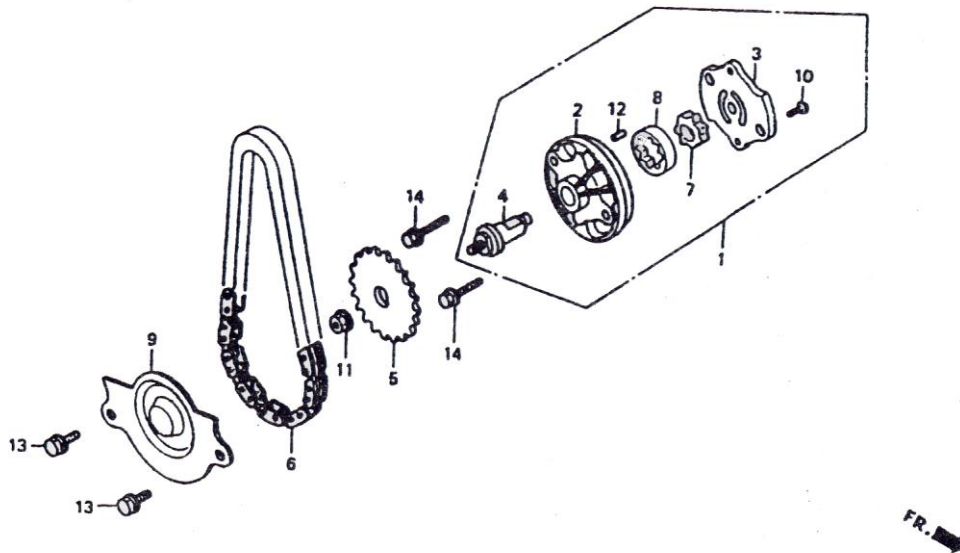
E-12 Cam Chain Tensioner

REF.NO.	PART NO.	DESCRIPTION	Q.T.Y
1	E1201	CHAIN CAM	1
2	E1202	TENSIDNER CAM CHAIN	1
3	E1203	LIFTER ASSY TENSIONER	1
4	E1204	GASKET TENSIONER LIFTER	1
5	E1205	PIVOT CAM CHAIN TENSIONER	1
6	E1206	GUIDE COMP CAM CHAIN	1
7	E1207	BOLT FLANG 6X22	2
8	E1208	SCREW PAN 6X6	1
9	E1209	O-RING 15.2X1.5	1
10	E1210	O-RING 1.5-9.5	1



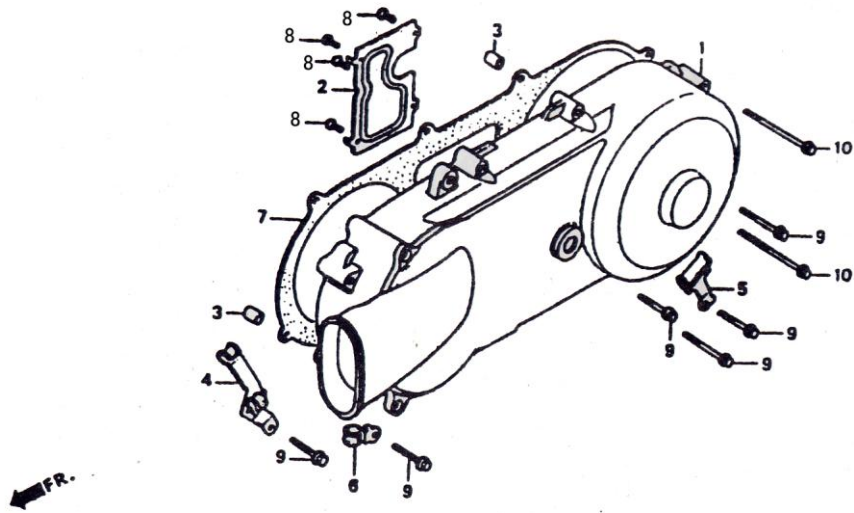
E-13 Generator

REF.NO.	PART NO.	DESCRIPTION	Q.T.Y
1	E1301	PAN COMP COOLING	1
2	E1302	GENERATOR ASSY FLYWHEEL TYPE D.C	1
3	E1303	FLYWHEEL COMP	1
4	E1304	STATOR COMP	1
5	E1305	WASHER PLAIN 12MM	1
6	E1306	BOLT HEX 5X12	2
7	E1307	NUT FLANGE 12MM	1
8	E1308	BOLT FLANGE 6X18	4
9	E1309	BOLT FLANGE 6X20	2



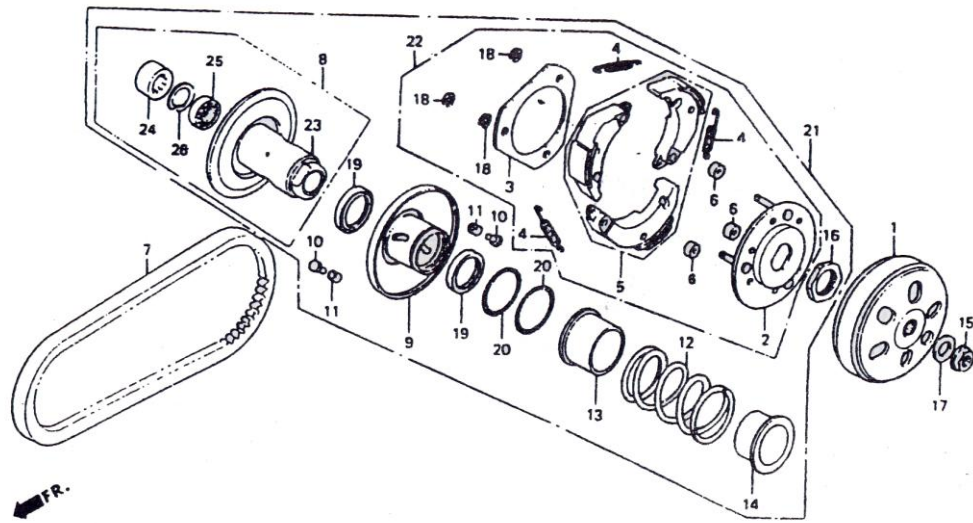
E-14 Oil pump

REF.NO.	PART NO.	DESCRIPTION	Q.T.Y
1	E1401	PUMP ASSY OIL	1
2	E1402	BODY OIL PUMP	1
3	E1403	PLATE OIL PUMP	1
4	E1404	SHAFT OIL PUMP	1
5	E1405	SPROCKET OIL PUMP DRIVEN	1
6	E1406	CHAIN OIL PUMP	1
7	E1407	ROTOR OIL PUMP INNER	1
8	E1408	ROTOR OIL PUMP OUTER	1
9	E1409	SEPARTOR OIL	1
10	E1410	SCREW PAN 3X10	1
11	E1411	NUT FLANGE 6MM	1
12	E1412	PON C DOWEL 4X6.5	1
13	E1413	BOLT FLANGE 6X12	2
14	E1414	BOLT FLANGE 6X25	2



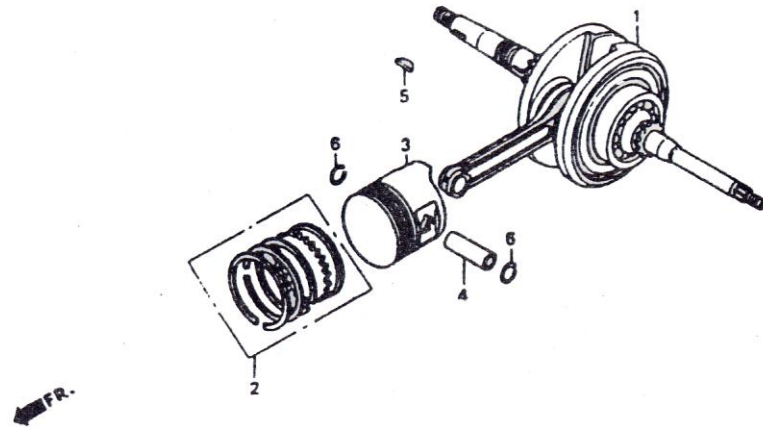
E-15 Left Crankcase Cover

REF.NO.	PART NO.	DESCRIPTION	Q.T.Y
1	E1501	COVER L	1
2	E1502	PLATE L COVER	1
3	E1503	PIN DOWEL 8X14	2
4	E1504	CLAMPER THROTTLE CABLE	1
5	E1505	CLAMPER BRAKE CABLE	1
6	E1506	CLAMPER BREATHER DRAIN TUBE	1
7	E1507	GASKET L COVER	1
8	E1508	SCREW TAPPING 4X8	4
9	E1509	BOLT FLANGE 6X40	6
10	E1510	BOLT FLANGE 6X65	2



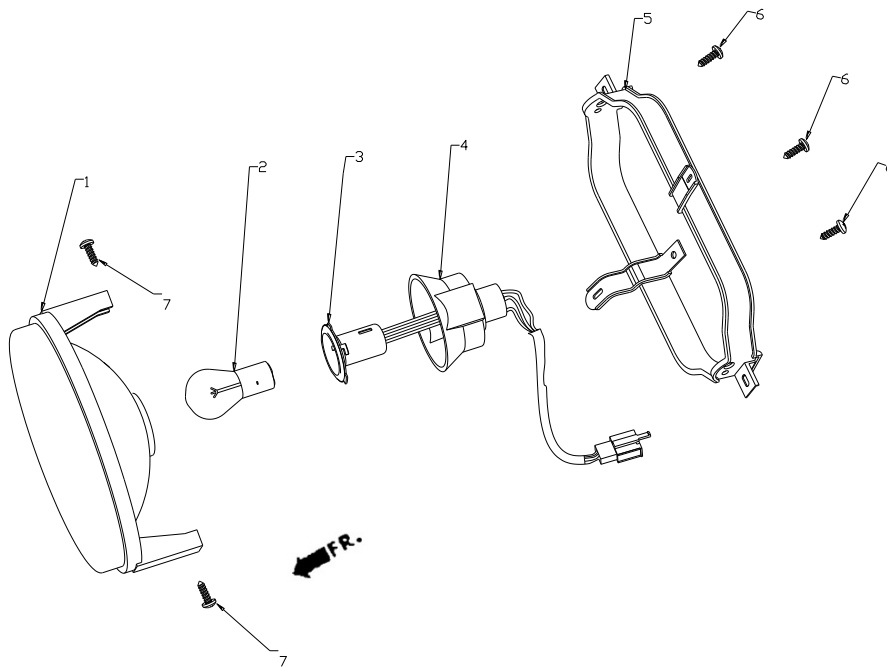
E-16 Driven Pully

REF.NO.	PART NO.	DESCRIPTION	Q.T.Y
1	E1601	OUTER CLUTCH	1
2	E1602	PLATE COMP DRIVE	1
3	E1603	PLATE CLUTCH SIDE	1
4	E1604	SPRING CLUTCH	1
5	E1605	WEIGHT SET CLUTCH	1
6	E1606	RUBBER CLUTCH DAMPER	3
7	E1607	BELT DRIVE	1
8	E1608	FACE ASSY DRIVEN	1
9	E1609	FACE COMP MOVABLE DRIVEN	1
10	E1610	PIN ROLLER GUIDE	3
11	E1611	ROLLER GUIDE	3
12	E1612	SPRING DRIVEN FACE	1
13	E1613	COLLAR SEAL	1
14	E1614	COLLAR SPRING	1
15	E1615	NUT COMPRESSOR FLANGE 12MM	1
16	E1616	NUT SPECIAL 28MM	1
17	E1617	WASHER PLAIN 12MM	3
18	E1618	CIRCLIP 7MM	1
18	E1618	PIN SPECIAL 4.5MM	1
19	E1619	SEAL DRIVER FACE 34X41X4	2
20	E1620	O-RING	2
21	E1621	PULLEY ASSY DRIVEN	1
22	E1622	PLATE ASSY DRIVEN	1
23	E1623	FACE COMP DRIVEN	1
24	E1624	BEARING NEEDLE 20X29X18	1
25	E1625	BEARING BALL REDLAL 6920U	1
26	E1626	CIRCLIP IN 28MM	1



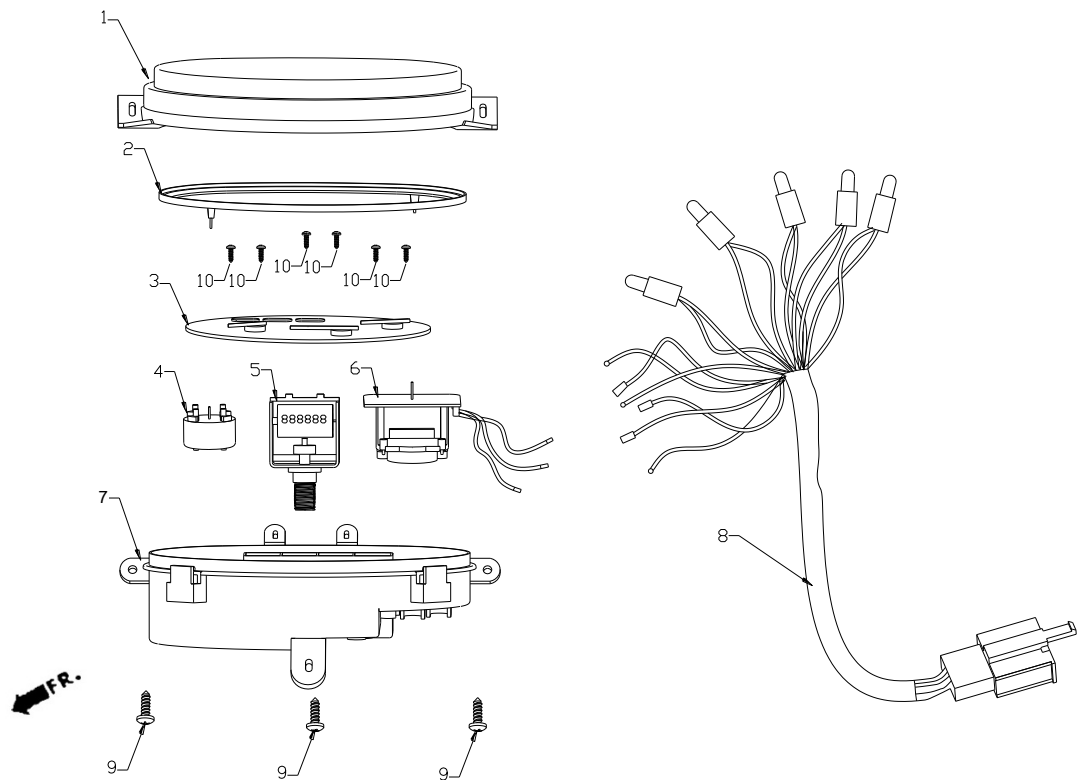
E-17 Crank Shaft-Piston

REF.NO.	PART NO.	DESCRIPTION	Q.T.Y
1	E1701	CRANKSHAFT COMP	1
2	E1702	RING SET PISTON (STD)	1
3	E1703	PISTON (STD)	1
4	E1704	PIN PISTON	1
5	E1705	KEY WOODRUFF 25X14X4	1
6	E1706	CLIP PISTON PIN 15MM	2



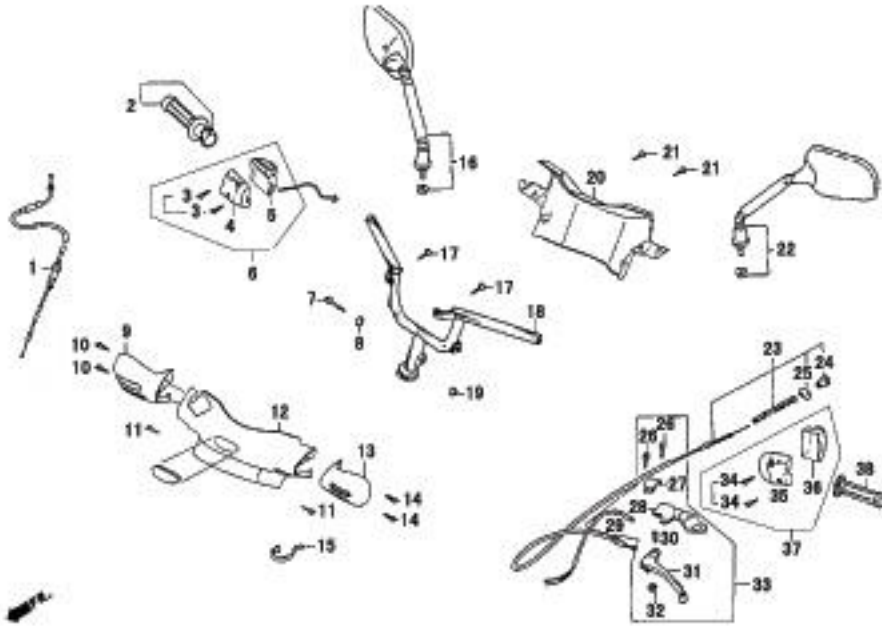
F-1 Head Light

REF.NO.	PART NO.	DESCRIPTION	Q.T.Y
1	F0101	LENS COMP	1
2	F0102	BULB	1
3	F0103	CAP SOCKET	1
4	F0104	CAP SOCKET	1
5	F0105	BRACKET HEAD LAMP	1
6	F0106	SCREW ST 4.8X13	3
7	F0107	BOLT M5X12	2



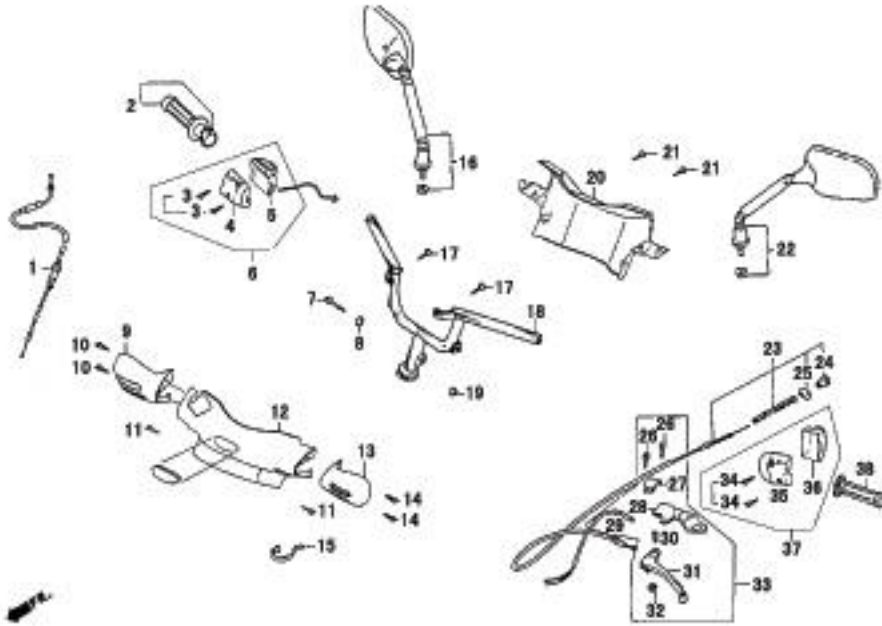
F-2 Speedometer

REF.NO.	PART NO.	DESCRIPTION	Q.T.Y
1	F0201	LENS	1
2	F0202	HOLDER SPEEDOMETER	1
3	F0203	SPEEDOMETER	1
4	F0204	COIL COMP OIL METER	1
5	F0205	TRANSMISSION COMP SPEEDOMETER	1
6	F0206	COIL COMP TACHOMETER	1
7	F0207	CASE ASSY	1
8	F0208	SOCKET COMP METER	1
9	F0209	SCREW ST 4.8X16	3
10	F0210	BOLT 2.5X5	6



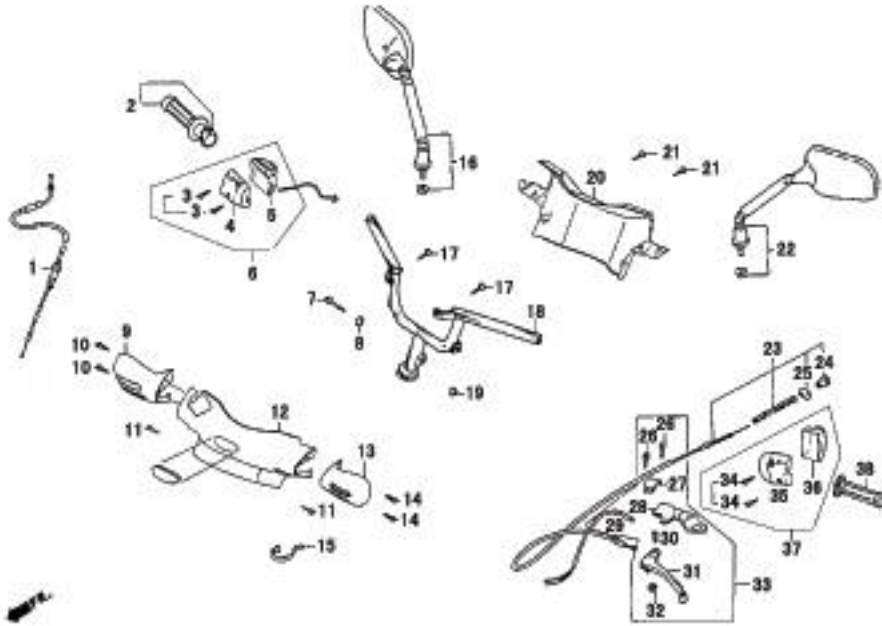
F-3 Handle Steering

REF.NO.	PART NO.	DESCRIPTION	Q.T.Y
1	F0301	CABLE ASSY THRATTLE	1
2	F0302	GRIP ASSY THRATTLE	1
3	F0303	SCREW M5X25	2
4	F0304	HOLDER SWITCH ASSY RH	1
5	F0305	HOLDER SWITCH ASSY RH	1
6	F0306	SWITCH ASSY RH HANDLE COMP	1
7	F0307	BOLT M10X40	1
8	F0308	GASKET 10	1
9-1	F0309-01	COVER HANDLE RH (SILVER WHITE)	1
9-2	F0309-02	COVER HANDLE RH (GINGKO-BLUE)	1
9-3	F0309-03	COVER HANDLE RH (BLACK)	1
9-4	F0309-04	COVER HANDLE RH (DARK GREEN DOUBLE COLOR)	1
9-5	F0309-05	COVER HANDLE RH (JEWEL BLUE DOUBLE COLOR)	1
9-6	F0309-06	COVER HANDLE RH (DARK RED DOUBLE COLOR)	1
9-7	F0309-07	COVER HANDLE RH (BLACK DOUBLE COLOR)	1
9-8	F0309-08	COVER HANDLE RH (GREY DOUBLE COLOR)	1
10	F0310	SCREW ST3.9X12	2
11	F0311	BOLT M6X14	2
12-1	F0312-01	COVER HANDLE FR (SILVER WHITE)	1
12-2	F0312-02	COVER HANDLE FR (GINGKO-BLUE)	1
12-3	F0312-03	COVER HANDLE FR (BLACK)	1
12-4	F0312-04	COVER HANDLE FR (DARK GREEN DOUBLE COLOR)	1
12-5	F0312-05	COVER HANDLE FR (JEWEL BLUE DOUBLE COLOR)	1
12-6	F0312-06	COVER HANDLE FR (DARK RED DOUBLE COLOR)	1
12-7	F0312-07	COVER HANDLE FR (BLACK DOUBLE COLOR)	1



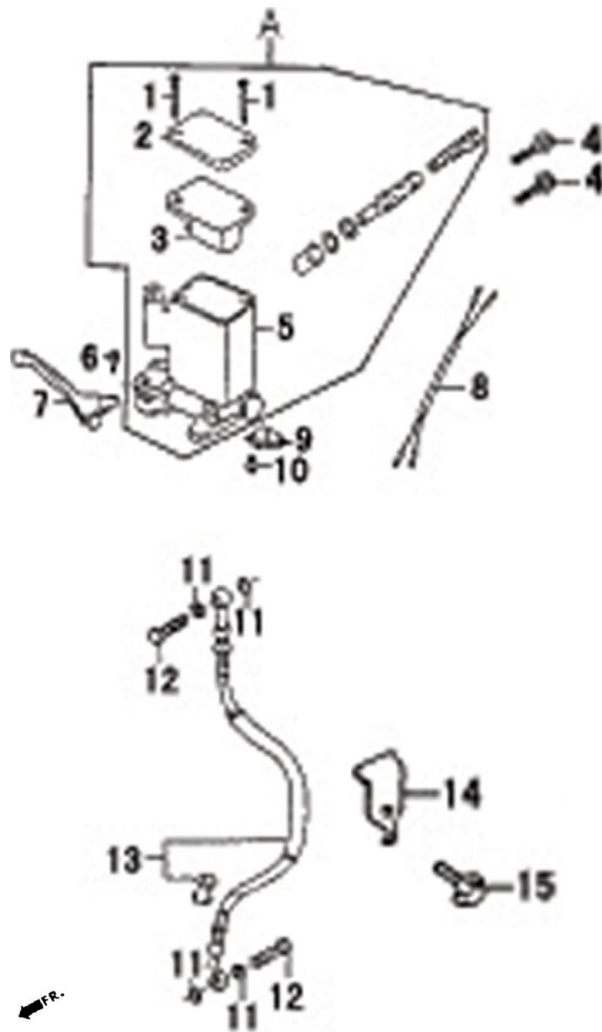
F-3 Handle Steering

REF.NO.	PART NO.	DESCRIPTION	Q.T.Y
12-8	F0312-08	COVER HANDLE FR (GREY DOUBLE COLOR)	1
13-1	F0313-01	COVER HANDLE LH (SILVER WHITE)	1
13-2	F0313-02	COVER HANDLE LH (GINGKO-BLUE)	1
13-3	F0313-03	COVER HANDLE LH (BLACK)	1
13-4	F0313-04	COVER HANDLE LH (DARK GREEN DOUBLE COLOR)	1
13-5	F0313-05	COVER HANDLE LH (JEWEL BLUE DOUBLE COLOR)	1
13-6	F0313-06	COVER HANDLE LH (DARK RED DOUBLE COLOR)	1
13-7	F0313-07	COVER HANDLE LH (BLACK DOUBLE COLOR)	1
13-8	F0313-08	COVER HANDLE LH (GREY DOUBLE COLOR)	1
14	F0314	SCREW ST3.9X12	2
15	F0315	CLAMPER	1
16	F0316	MIRROR ASSY R BACK	1
17	F0317	SCREW ST3.9X12	2
18	F0318	HANDLE BAR	1
19	F0319	NUT M10	1
20	F0320	COVER HANDLE RR	1
21	F0321	SCREW ST4.2X12	2
22	F0322	MIRROR ASSY L BACK	1
23	F0323	CABLE ASSY REAR BRAKE	1
24	F0324	NUT	1
25	F0325	PIN	1
26	F0326	BOLT M6X25	2
27	F0327	UPPER BRACKET REAR BRAKE LEVER	1
28	F0328	LOWER BRACKET REAR BRAKE LEVER	1
29	F0329	SWITCH REAR BRAKE	1



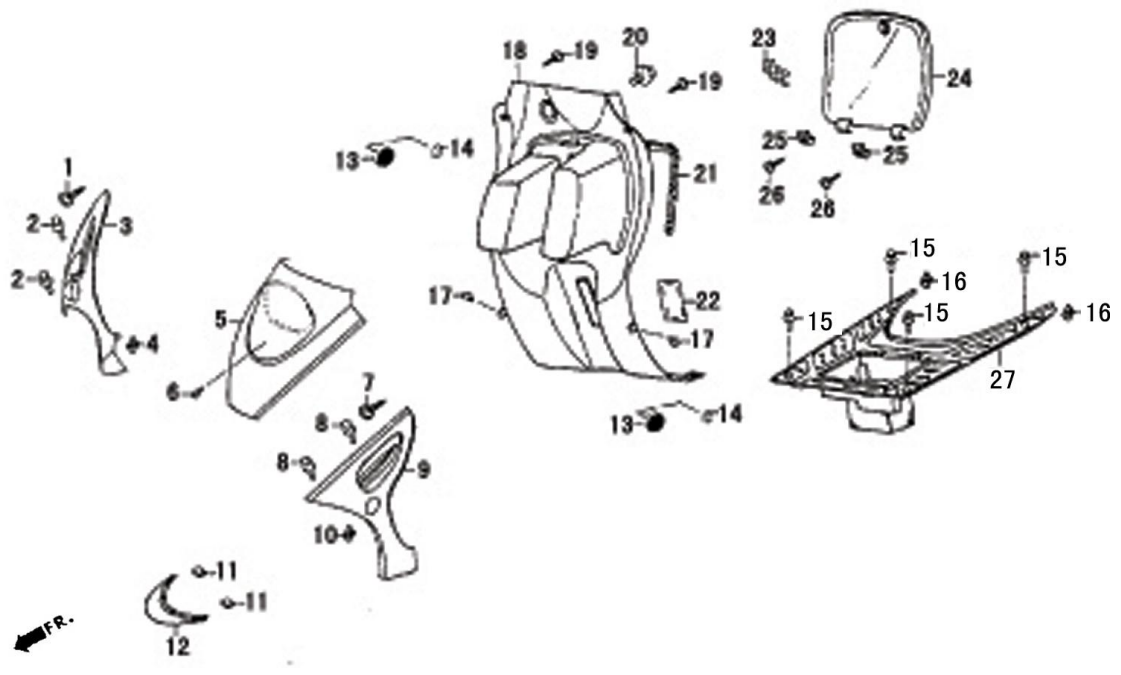
F-3 Handle Steering

REF.NO.	PART NO.	DESCRIPTION	Q.TY
30	F0330	SCREW	1
31	F0331	LEVER	1
32	F0332	NUT	1
33	F0333	BRAKE LEVER ASSY REAR	1
34	F0334	SCREW M5X25	2
35	F0335	HOLDER SWITCH ASSY LH	1
36	F0336	HOLDER SWITCH ASSY LH	1
37	F0337	SWITCH ASSY LH HANDLE COMP	1
38	F0338	GRIP ASSY L HANDLE	1



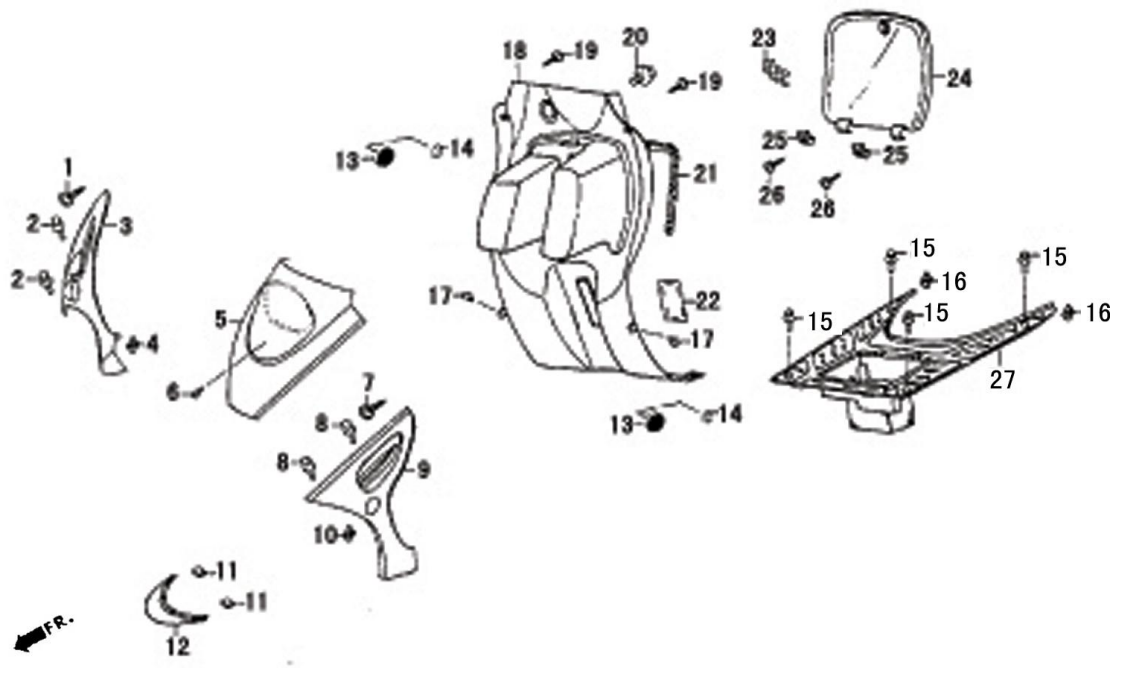
F-4 Front Brake Assy.

REF.NO.	PART NO.	DESCRIPTION	Q.T.Y
A	F04A	BRAKE MASTER CYLINDER ASSY	1
1	F0401	SCREW M4X12	2
2	F0402	CAP	1
3	F0403	DIAPHRAGM	1
4	F0404	BOLT M6X22	2
5	F0405	BODY MASTER CYLINDER	1
6	F0406	SCREW	1
7	F0407	LEVER BRAKE FR	1
8	F0408	LABLE BRAKE SWITCH	1
9	F0409	SWITCH BRAKE FR	1
10	F0410	SCREW M4X12	1
11	F0411	WASHER	4
12	F0412	BOLT M10X22	2
13	F0413	BRAKE HOSE ASSY	1
14	F0414	CLAMP BRAKE HOSE	1
15	F0415	BOLT M6X12	1



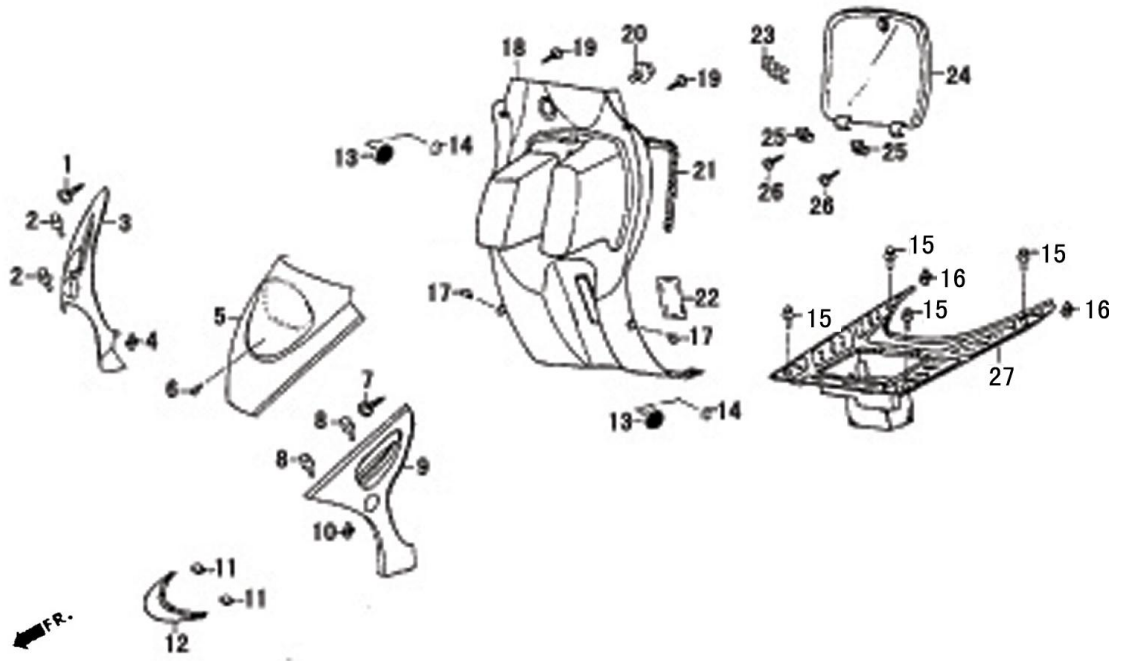
F-5 Front Fork Floor Panel

REF.NO.	PART NO.	DESCRIPTION	Q.T.Y
1	F0501	SCREW ST 3.9X12	1
2	F0502	NUT M6X12	2
3-1	F0503-01	SIDE MOLD RH (SILVER WHITE)	1
3-2	F0503-02	SIDE MOLD RH (GINGKO-BLUE)	1
3-3	F0503-03	SIDE MOLD RH (BLACK)	1
3-4	F0503-04	SIDE MOLD RH (DARK GREEN DOUBLE COLOR)	1
3-5	F0503-05	SIDE MOLD RH (JEWEL BLUE DOUBLE COLOR)	1
3-6	F0503-06	SIDE MOLD RH (DARK RED DOUBLE COLOR)	1
3-7	F0503-07	SIDE MOLD RH (BLACK DOUBLE COLOR)	1
3-8	F0503-08	SIDE MOLD RH (GREY DOUBLE COLOR)	1
4	F0504	NUT CLIP	1
5-1	F0505-01	COVER SET FRONT (SILVER WHITE)	1
5-2	F0505-02	COVER SET FRONT (GINGKO-BLUE)	1
5-3	F0505-03	COVER SET FRONT (BLACK)	1
5-4	F0505-04	COVER SET FRONT (DARK GREEN DOUBLE COLOR)	1
5-5	F0505-05	COVER SET FRONT (JEWEL BLUE DOUBLE COLOR)	1
5-6	F0505-06	COVER SET FRONT (DARK RED DOUBLE COLOR)	1
5-7	F0505-07	COVER SET FRONT (BLACK DOUBLE COLOR)	1
5-8	F0505-08	COVER SET FRONT (GREY DOUBLE COLOR)	1
6	F0506	SCREW M6X12	1
7	F0507	SCREW ST3.9X12	1
8	F0508	BOLT M6X12	2
9-1	F0509-01	FRONT SIDE MOLD LH (SILVER WHITE)	1
9-2	F0509-02	FRONT SIDE MOLD LH (GINGKO-BLUE)	1



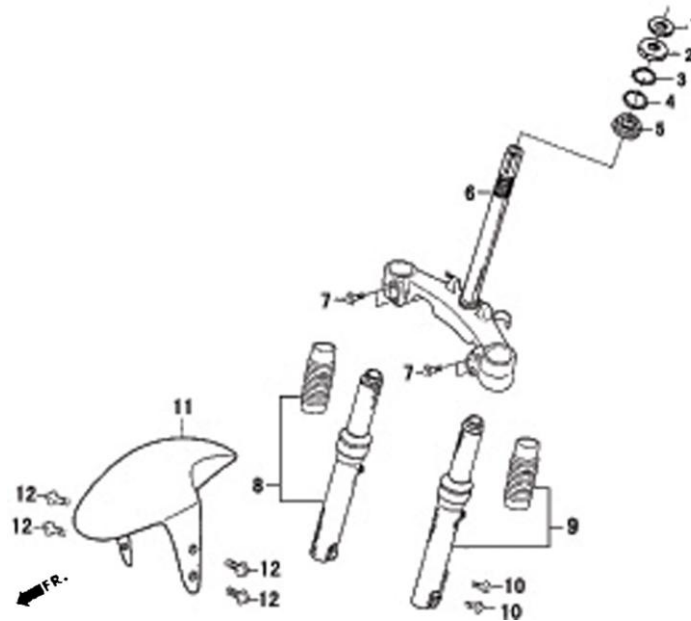
F-5 Front Fork Floor Panel

REF.NO.	PART NO.	DESCRIPTION	Q.T.Y
9-3	F0509-03	FRONT SIDE MOLD LH (BLACK)	1
9-4	F0509-04	FRONT SIDE MOLD LH (DARK GREEN DOUBLE COLR)	1
9-5	F0509-05	FRONT SIDE MOLD LH (JEWEL BLUE DOUBLE COLOR)	1
9-6	F0509-06	FRONT SIDE MOLD LH (DARK RED DOUBLE COLOR)	1
9-7	F0509-07	FRONT SIDE MOLD LH (BLACK DOUBLE COLOR)	1
9-8	F0509-08	FRONT SIDE MOLD LH (GREY DOUBLE COLOR)	1
10	F0510	NUT CLIP	1
11	F0511	CLIP	3
12-1	F0512-01	COVER DECORATION FRONT (SILVER WHITE)	1
12-2	F0512-02	COVER DECORATION FRONT (GINGKO-BLUE)	1
12-3	F0512-03	COVER DECORATION FRONT (BLACK)	1
12-4	F0512-04	COVER DECORATION FRONT (DARK GREEN DOUBLE COLOR)	1
12-5	F0512-05	COVER DECORATION FRONT (JEWEL BLUE DOUBLE COLOR)	1
12-6	F0512-06	COVER DECORATION FRONT (DARK RED DOUBLE COLOR)	1
12-7	F0512-07	COVER DECORATION FRONT (BLACK DOUBLE COLOR)	1
12-8	F0512-08	COVER DECORATION FRONT (GREY DOUBLE COLOR)	1
13	F0513	LID LEG SHIELD	2
14	F0514	BOLT M6X12	2
15	F0515	BOLT M6X12	2
16	F0516	NUT CLIP	2
17	F0517	BOLT M6X16	2
18	F0518	FRONT LUGGAGE	1
19	F0519	SCREW ST3.9X12	2
20	F0520	BOLT M6X16	1



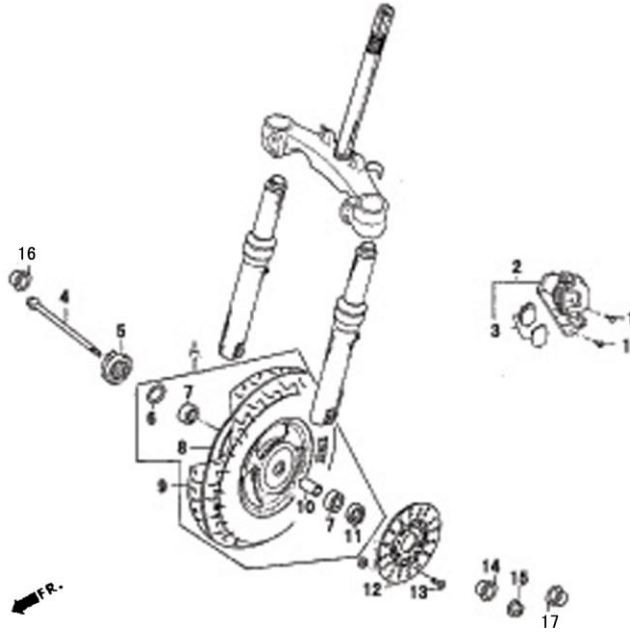
F-5 Front Fork Floor Panel

REF.NO.	PART NO.	DESCRIPTION	Q.T.Y
21	F0521	SEAL DUST	1
22	F0522	LID LEG SHIELD	1
23	F0523	SET SPRING LUGGAGE COVER	1
24	F0524	COVER FRONT LAGGAGE	1
25	F0525	BRACKET	2
26	F0526	SCREW ST 3.9X12	2
27	F0527	PEDAL FLOOR	1



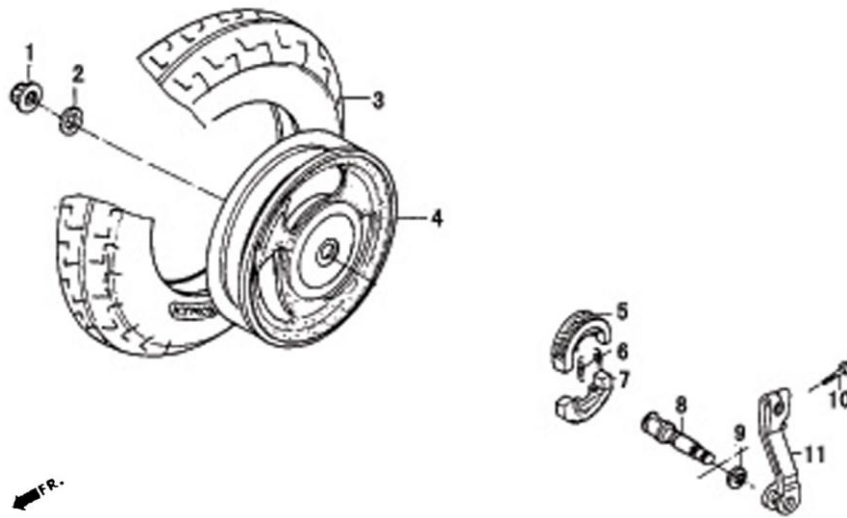
F-6 Front Fork Wheel

REF.NO.	PART NO.	DESCRIPTION	Q.T.Y
1	F0601	NUT	1
2	F0602	BOLL RACE	1
3	F0603	BOLL ϕ 4.763	1
4	F0604	BOLL ϕ 4.763	1
5	F0605	BOLL RACE	1
6	F0606	STEERING	1
7	F0607	BOLT M8X40	4
8	F0608	FORK ASSY R FR	1
9	F0609	FORK ASSY L FR	1
10	F0610	BOL M8X32	2
11-1	F0611-01	FENDER FR (SILVER WHITE)	1
11-2	F0611-02	FENDER FR (GINGKO-BLUE)	1
11-3	F0611-03	FENDER FR (BLACK)	1
11-4	F0611-04	FENDER FR (DARK GREEN DOUBLE COLOR)	1
11-5	F0611-05	FENDER FR (JEWEL BLUE DOUBLE COLOR)	1
11-6	F0611-06	FENDER FR (DARK RED DOUBLE COLOR)	1
11-7	F0611-07	FENDER FR (BLACK DOUBLE COLOR)	1
11-8	F0611-08	FENDER FR (GREY DOUBLE COLOR)	1
12	F0612	BOLT M6X14	4



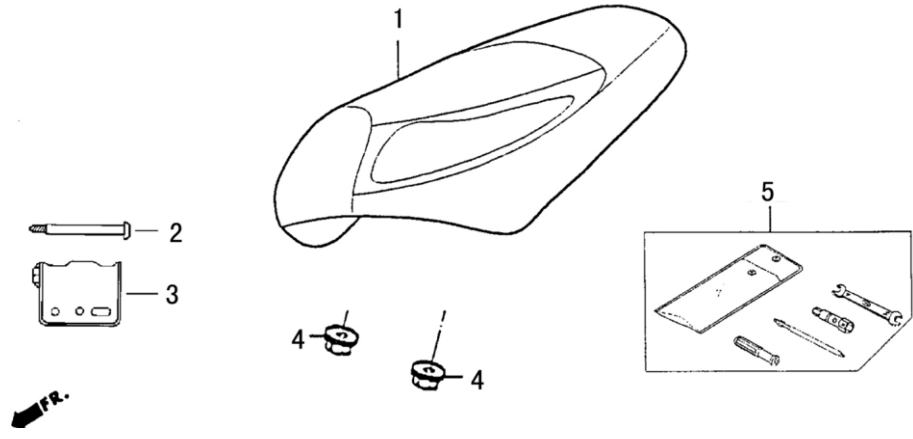
F-7 Front Wheel

REF.NO.	PART NO.	DESCRIPTION	Q.T.Y
A	F07A	FRONT WHEEL ASSY	1
1	F0701	BOLT M8X35	2
2	F0702	LALIPER BRAKE	1
3	F0703	PAD	1
4	F0704	AXLE FRONT WHEEL	1
5	F0705	BOX ASSY SPEEDOMETER GEAR	1
6	F0706	SEAL	1
7	F0707	BEARING 6201	2
8	F0708	WHEEL COMP FR	1
9	F0709	TIRE COMP FRONT 3.50-10	1
10	F0710	SPACER	1
11	F0711	SEAL20X32X5	1
12	F0712	DISC BRAKE	1
13	F0713	SCREW M8X25	3
14	F0714	COLLAR FRONT WHEEL	1
15	F0715	BOLT M12X1.25	1
16	F0716	CAP RUBBER ϕ 12	1
17	F0717	CAP RUBBER ϕ 14	1



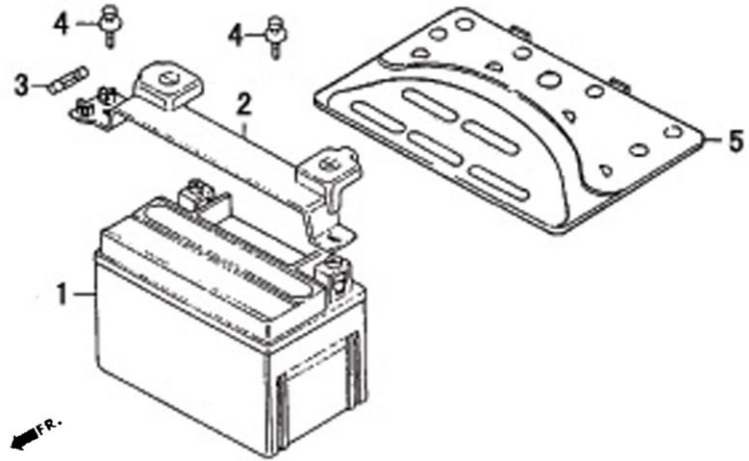
F-8 Rear Wheel

REF.NO.	PART NO.	DESCRIPTION	Q.T.Y
1	F0801	NUT M16X1.5	1
2	F0802	WASHER	1
3	F0803	TIRE ASSY 3.50-10	1
4	F0804	RIN COMP WHEEL	1
5	F0805	SHOE COMP RR BRAKE	1
6	F0806	SPRING BRAKE SHOE	2
7	F0807	SHOE COMP RR BRAKE	1
8	F0808	CAM BRAKE	1
9	F0809	WASHER	1
10	F0810	BOLT M6X20	1
11	F0111	ARM COMP RR BRAKE	1



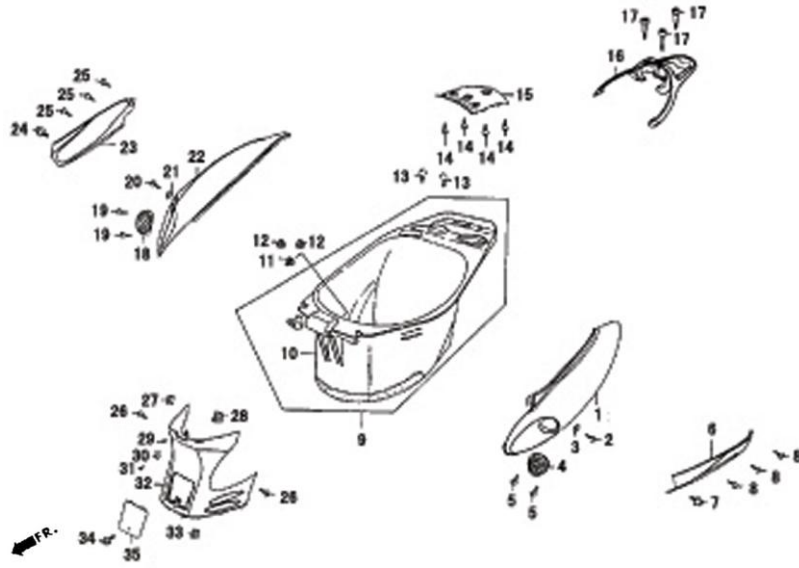
F-9 Seat

REF.NO.	PART NO.	DESCRIPTION	Q.T.Y
1	F0901	SEAT COMP	1
2	F0902	AXLE	1
3	F0903	BRACKET SEAT	1
4	F0904	NUT M6	2
5	F0905	TOOLS	1



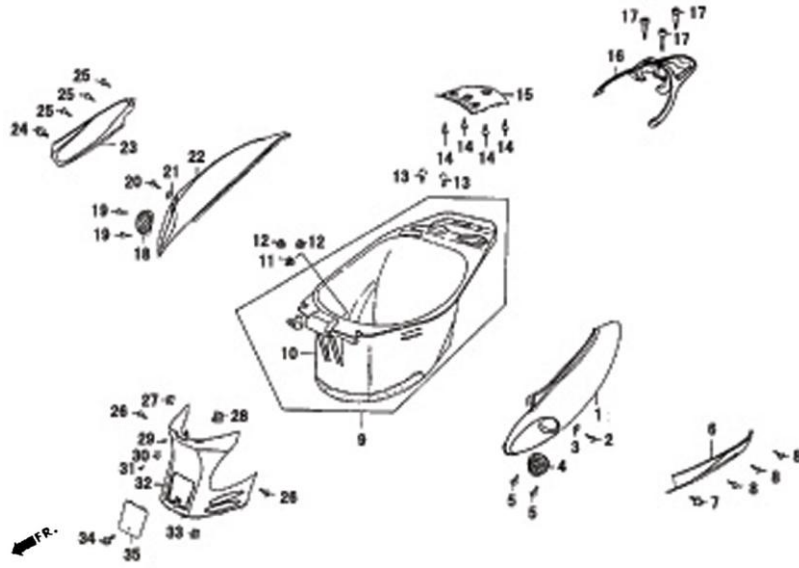
F-11 Battery

REF.NO.	PART NO.	DESCRIPTION	Q.T.Y
1	F1101	BATTERY	1
2	F1102	BAND BATTERY	1
3	F1103	FUSE 15A	1
4	F1104	SCREW M5X12	2
5	F1105	COVER BATTERY	1



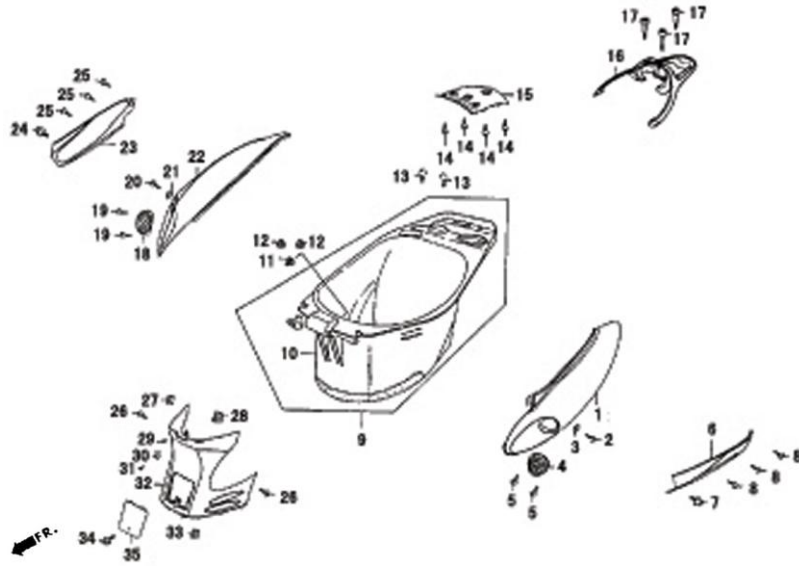
F-12 Body Cover-Luggage Box

REF.NO.	PART NO.	DESCRIPTION	Q.T.Y
1-1	F1201-01	COVER LH BODY (SILVER WHITE)	1
1-2	F1201-02	COVER LH BODY (GINGKO-BLUE)	1
1-3	F1201-03	COVER LH BODY (BLACK)	1
1-4	F1201-04	COVER LH BODY (DARK GREEN DOUBLE COLOR)	1
1-5	F1201-05	COVER LH BODY (JEWEL BLUE DOUBLE COLOR)	1
1-6	F1201-06	COVER LH BODY (DARK RED DOUBLE COLOR)	1
1-7	F1201-07	COVER LH BODY (BLACK DOUBLE COLOR)	1
1-8	F1201-08	COVER LH BODY (GREY DOUBLE COLOR)	1
2	F1202	SCREW ST3.9X12	1
3	F1203	NUT CLIP	1
4	F1204	COVER BREATHER LH	1
5	F1205	SCREW ST3.9X12	2
6-1	F1206-01	REAR SIDE MOLD LH (SILVER WHITE)	1
6-2	F1206-02	REAR SIDE MOLD LH (GINGKO-BLUE)	1
6-3	F1206-03	REAR SIDE MOLD LH (BLACK)	1
6-4	F1206-04	REAR SIDE MOLD LH (DARK GREEN DOUBLE COLOR)	1
6-5	F1206-05	REAR SIDE MOLD LH (JEWEL BLUE DOUBLE COLOR)	1
6-6	F1206-06	REAR SIDE MOLD LH (DARK RED DOUBLE COLOR)	1
6-7	F1206-07	REAR SIDE MOLD LH (BLACK DOUBLE COLOR)	1
6-8	F1206-08	REAR SIDE MOLD LH (GREY DOUBLE COLOR)	1
7	F1207	BOLT M6X14	1
8	F1208	SCREW ST3.9X12	2
9	F1209	BOX ASSY LUGGAGE	1
10	F1210	BOX LUGGAGE	1
11	F1211	SCREW M6X12	1
12	F1212	NUT M6	2
13	F1213	BOLT M6X12	2



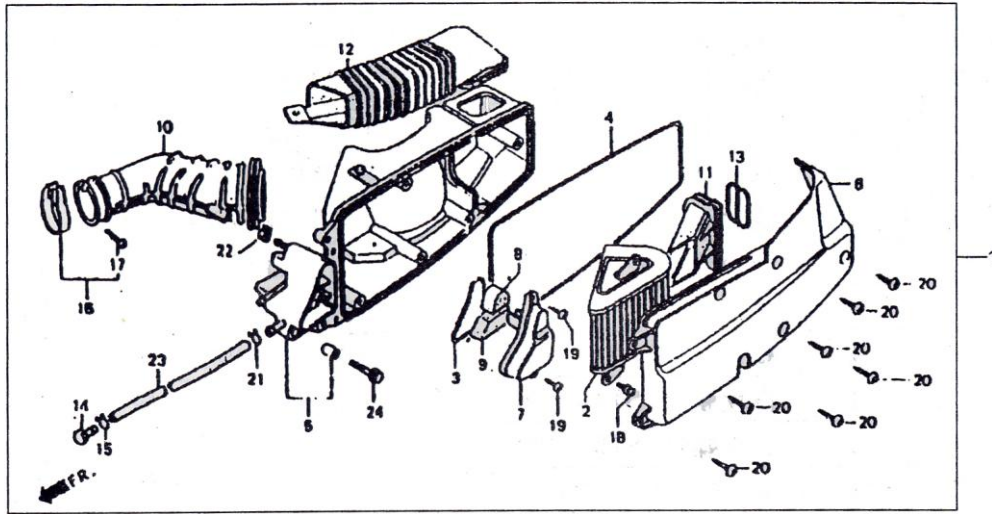
F-12 Body Cover Luggage Box

REF.NO.	PART NO.	DESCRIPTION	Q.T.Y
14	F1214	SCREW ST3.9X12	4
15-1	F1215-01	COVER RR CENTER (SILVER WHITE)	1
15-2	F1215-02	COVER RR CENTER (GINGKO-BLUE)	1
15-3	F1215-03	COVER RR CENTER (BLACK)	1
15-4	F1215-04	COVER RR CENTER (DARK GREEN DOUBLE COLOR)	1
15-5	F1215-05	COVER RR CENTER (JEWEL BLUE DOUBLE COLOR)	1
15-6	F1215-06	COVER RR CENTER (DARK RED DOUBLE COLOR)	1
15-7	F1215-07	COVER RR CENTER (BLACK DOUBLE COLOR)	1
15-8	F1215-08	COVER RR CENTER (GREY DOUBLE COLOR)	1
16	F1216	LARRIER LUGGAGE	1
17	F1217	BOLT M8X40	3
18	F1218	COVER BREATHER RH	1
19	F1219	SCREW ST3.9X12	2
20	F1220	SCREW ST3.9X12	1
21	F1221	NUT CLIP	1
22-1	F1222-01	COVER RH BODY (SILVER WHITE)	1
22-2	F1222-02	COVER RH BODY (GINGKO-BLUE)	1
22-3	F1222-03	COVER RH BODY (BLACK)	1
22-4	F1222-04	COVER RH BODY (DARK GREEN DOUBLE COLOR)	1
22-5	F1222-05	COVER RH BODY (JEWEL BLUE DOUBLE COLOR)	1
22-6	F1222-06	COVER RH BODY (DARK RED DOUBLE COLOR)	1
22-7	F1222-07	COVER RH BODY (BLACK DOUBLE COLOR)	1
22-8	F1222-08	COVER RH BODY (GREY DOUBLE COLOR)	1
23-1	F1223-01	REAR SIDE MOLD RH (SILVER WHITE)	1
23-2	F1223-02	REAR SIDE MOLD RH (GINGKO-BLUE)	1
23-3	F1223-03	REAR SIDE MOLD RH (BLACK)	1
23-4	F1223-04	REAR SIDE MOLD RH (DARK GREEN DOUBLE COLOR)	1



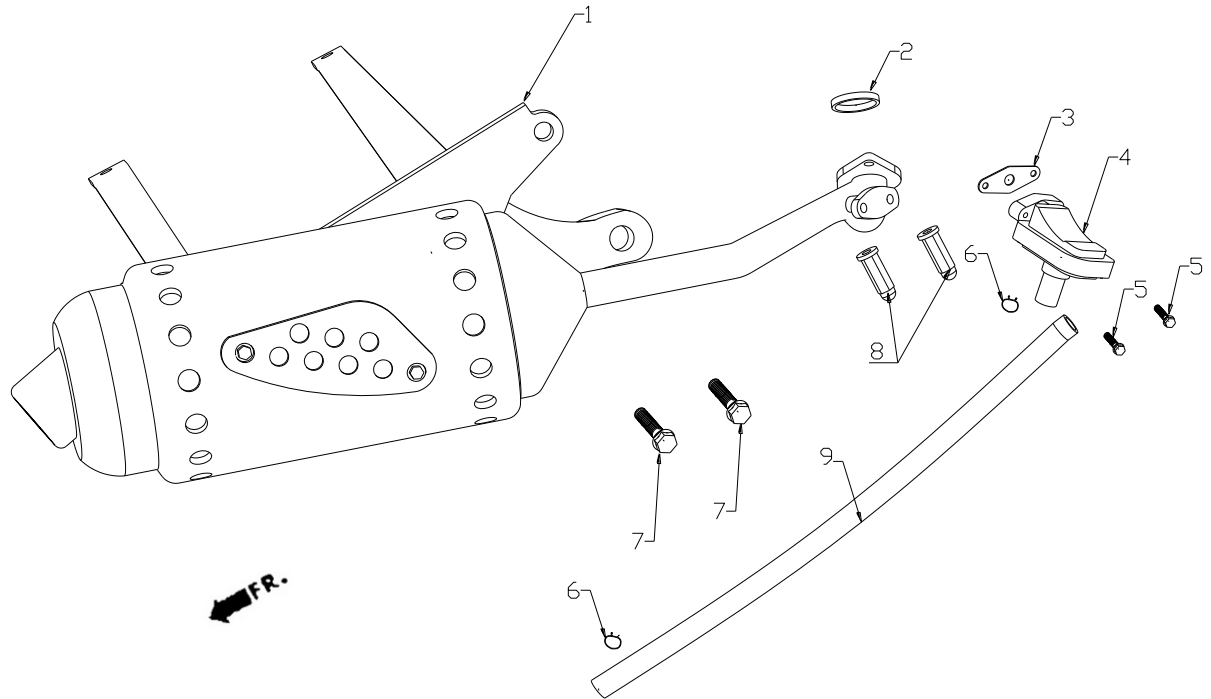
F-12 Body Cover-Luggage Box

REF.NO.	PART NO.	DESCRIPTION	Q.T.Y
23-5	F1223-05	REAR SIDE MOLD RH (JEWEL BLUE DOUBLE COLOR)	1
23-6	F1223-06	REAR SIDE MOLD RH (DARK RED DOUBLE COLOR)	1
23-7	F1223-07	REAR SIDE MOLD RH (BLACK DOUBLE COLOR)	1
23-8	F1223-08	REAR SIDE MOLD RH (GREY DOUBLE COLOR)	1
24	F1224	BOLT M6X14	1
25	F1225	SCREW ST3.9X12	2
26	F1226	SCREW ST3.9X12	2
27	F1227	NUT CLIP	1
28	F1228	NUT CLIP M6	1
29	F1229	SCREW ST3.9X12	1
30	F1230	NUT CLIP	1
31	F1231	SCREW ST3.9X12	1
32	F1232	COVER CENTER	1
33	F1233	NUT CLIP M5	1
34	F1234	SCREW M5X12	1
35	F1235	WINDOW COVER CENTER	1



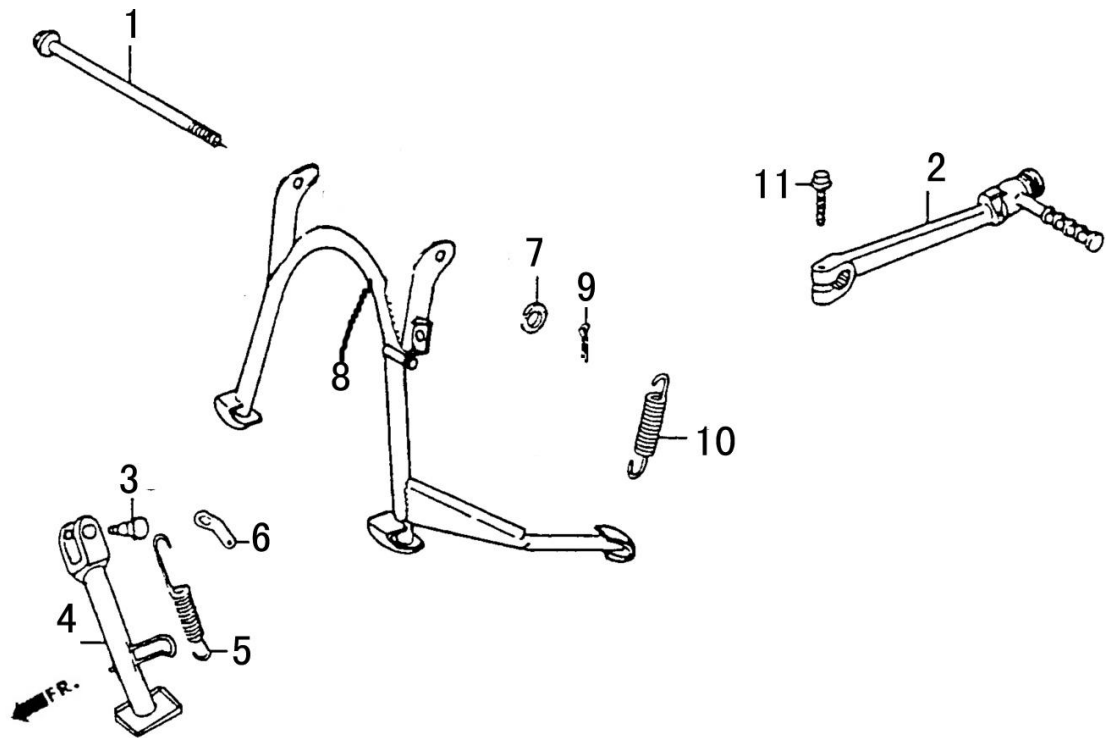
F-13 Air Cleaner

REF.NO.	PART NO.	DESCRIPTION	Q.T.Y
1	F1301	AIR CLEANER	1
2	F1302	ELEMENT COMP.,AIR CLEANER	1
3	F1303	SEAL,OIL CATCH	1
4	F1304	SEAL,AIR CLEANER COVER	1
5	F1305	CASE,AIR CLEANER	1
6	F1306	COVER,AIR CLEANER	1
7	F1307	COVER ASSY,OIL CATCH	1
8	F1308	FILTER BREATHER	1
9	F1309	FILTER OIL CATCH	1
10	F1310	TUBE,AIR CLEANER CONNECTING	1
11	F1311	DUCT,AIR CLEANER IN	1
12	F1312	DUCT,AIR CLEANER CASE	1
13	F1313	SPRING,IN DUCT	1
14	F1314	PLUG,BREATHER TUBE	1
15	F1315	CLIP,BREATHER TUBE	1
16	F1316	BAND,AIR CLEANER CONNECTING TUBE	1
17	F1317	BOLT FLANGE 4X25	1
18	F1318	SCEW-WASHER 5X10	2
19	F1319	SCREW,TAPPING 4X12	2
20	F1320	SCREW,TAPPING 5X20	1
21	F1321	CLIP,BREATHER TUBE	1
22	F1322	CLAMP,TUBE (D10 5)	3
23	F1323	TUBE,BREATHER 8X12X240	1



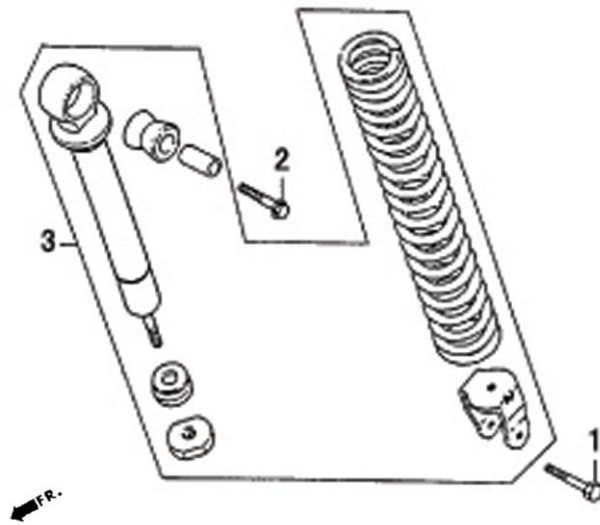
F-14 Exhaust Muffler

REF.NO.	PART NO.	DESCRIPTION	Q.T.Y
1	F1401	MUFFLER ASSY EXHAUST	1
2	F1402	GASKET EXH PIPE	1
3	F1403	GASKET	1
4	F1404	VALVE SECOND AIR IN	1
5	F1405	BOLT M6X12	2
6	F1406	CLAMP	2
7	F1407	BOLT M8X40	2
8	F1408	NUT CAP M6	2
9	F1409	RUBBER PIPE SECOND AIR IN	1



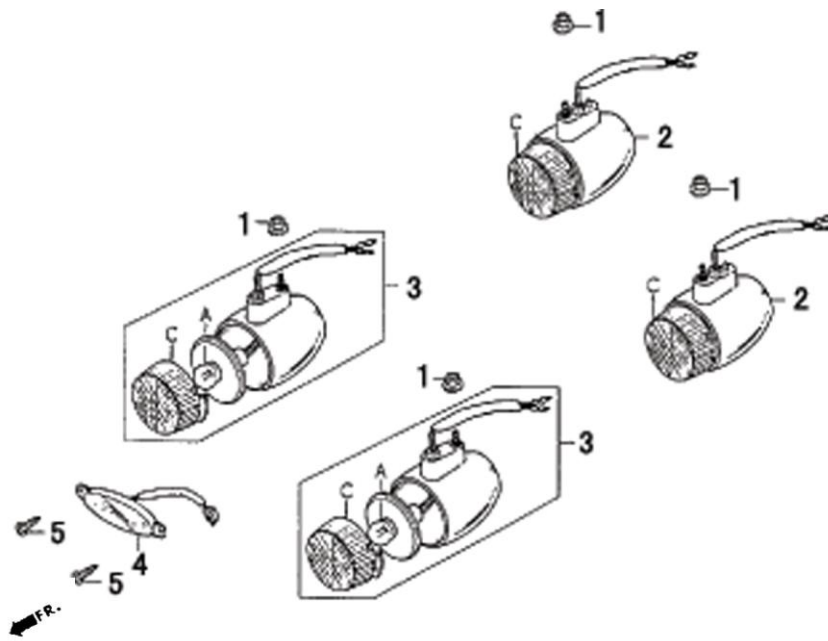
F-15 Kick Start Arm Stand

REF.NO.	PART NO.	DESCRIPTION	Q.T.Y
1	F1501	SHAFT MAIN STAND	1
2	F1502	ARM ASSY KICK STARTER	1
3	F1503	SCREW SIDE STAND PIVOT	1
4	F1504	SIDE STAND	1
5	F1505	SPRING SIDE STAND	1
6	F1506	HOOK SIDE STAND	1
7	F1507	WASHER 8	1
8	F1508	MAIN STAND	1
9	F1509	PIN LOCK 2X16	1
10	F1510	SPRING MAIN STAND	1
11	F1511	BOLT M6X22	1



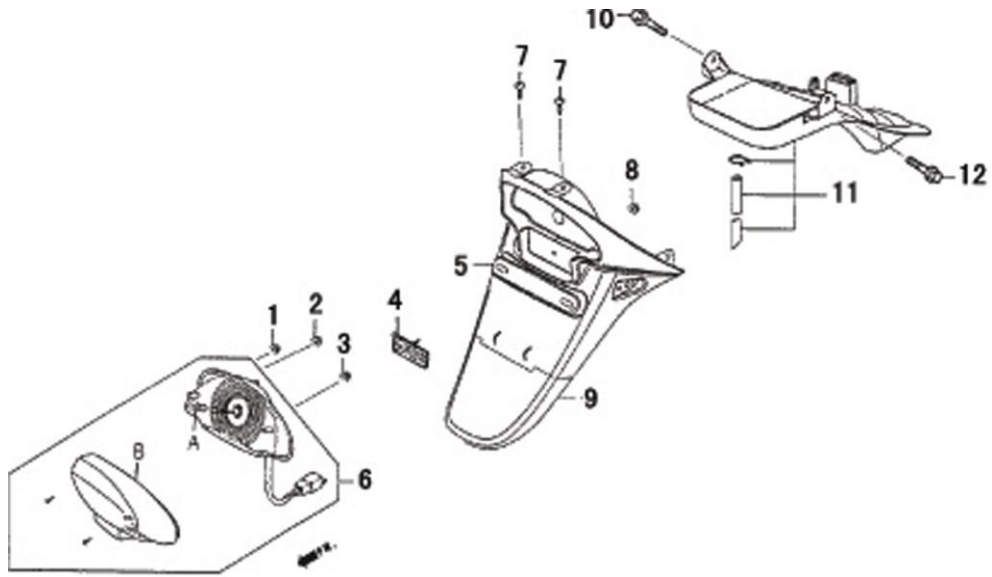
F-16 Rear Cushion

REF.NO.	PART NO.	DESCRIPTION	Q.T.Y
1	F1601	BOLT M8X32	1
2	F1602	BOLT M10X40	1
3	F1603	CUSHION ASSY REAR	1



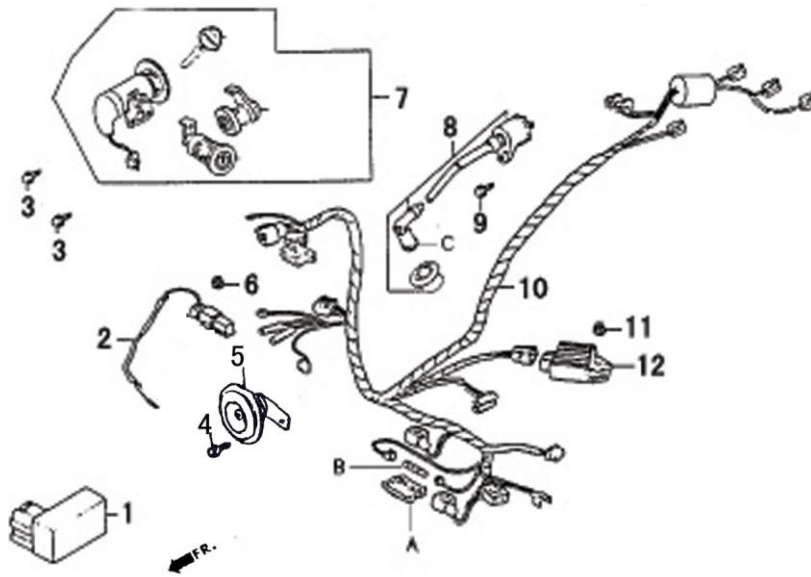
F-17 Position Light

REF.NO.	PART NO.	DESCRIPTION	Q.T.Y
A	F17A	BULB WINKER 12V-10W	4
C	F17C	LENS WINKER	4
1	F1701	NUT M5	4
2	F1702	LIGHT ASSY REAR WINKER	2
3	F1703	LIGHT ASSY FRONT WINKER	2
4	F1704	LIGHT ASSY FRONT POSITION	1
5	F1705	SCREW ST3.9X12	2



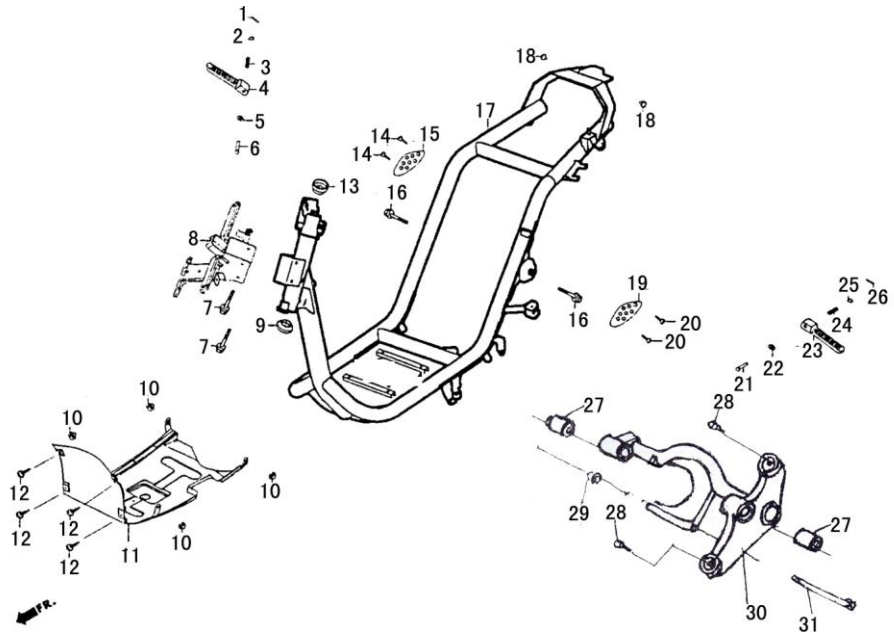
F-18 Tail Light

REF.NO.	PART NO.	DESCRIPTION	Q.T.Y
A	F18A	BULB TAIL LIGHT 12V 21/5W	1
B	F18B	LENS COMP TAIL LIGHT	1
1	F1801	NUT M5	3
2	F1802	NUT M5	3
3	F1803	NUT M5	3
4	F1804	REFLEX REFLECTOR	1
5	F1805	FENDER B RR ASSY	1
6	F1806	TAIL LINGT	1
7	F1807	BOLT M6X12	2
8	F1808	NUT M6	1
9	F1809	FENDER C RR ASSY	1
10	F1810	BOLT M6X16	1
11	F1811	FENDER A RR ASSY	1
12	F1812	BOLT M6X16	1



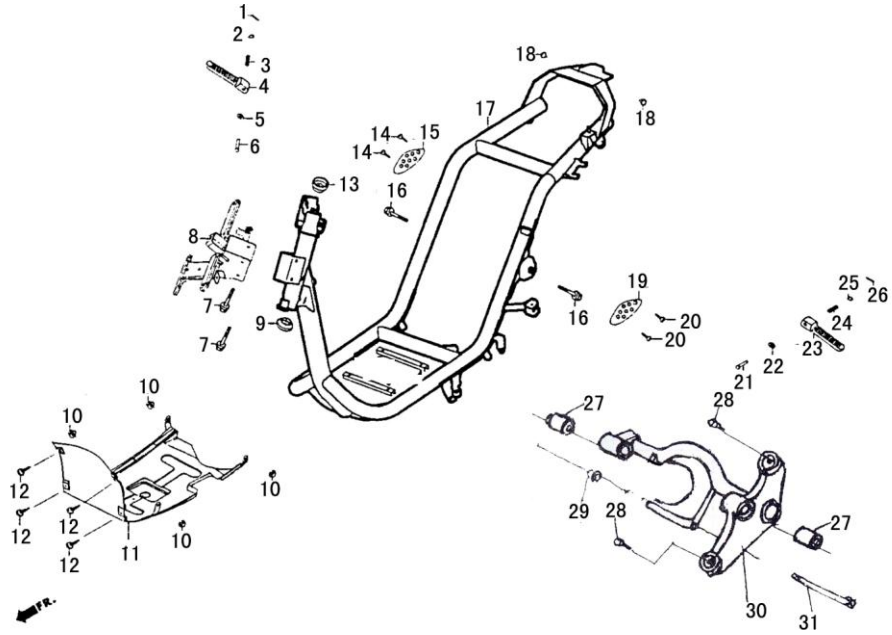
F-19 Wire Harness

REF.NO.	PART NO.	DESCRIPTION	Q.T.Y
A	F19A	CASE FUSE	1
B	F19B	FUSE 15A	2
C	F19C	COIL ASSY IGNITION	1
1	F1901	UNIT COMP CDI	1
2	F1902	RESISTOR COMP	1
3	F1903	BOLT M6X12	2
4	F1904	BOLT M6X16	1
5	F1905	HORN	1
6	F1906	NUT M6	1
7	F1907	KEY SET	1
8	F1908	COIL ASSY IGNITION	1
9	F1909	SCREW M5X22	1
10	F1910	HARNESS WIRE	1
11	F1911	BOLT M6X16	1
12	F1912	RECTIFIER ASSY	1



F-20 Frame Body

REF.NO.	PART NO.	DESCRIPTION	Q.T.Y
1	F2001	COTTER 1.6X20	1
2	F2002	BALL ϕ 6.35	1
3	F2003	SRRING	1
4	F2004	FOOTREST RH RR	1
5	F2005	WASHER	1
6	F2006	PIN	1
7	F2007	BOLT M6X50	2
8	F2008	STAY FRONT COVER	1
9	F2009	BALL RACE LOWER	1
10	F2010	NUT M6	4
11	F2011	COVER UNDER	1
12	F2012	SCREW ST3.9X12	4
13	F2013	BALL RACE UPPER	1
14	F2014	BOLT M6X12	1
15	F2015	PLATE DECORATION RH	1
16	F2016	BOLT M10X1.25X55	2
17	F2017	BODY COMP FRAME	1
18	F2018	NUT M6	2
19	F2019	PLATE DECORATION LH	1
20	F2020	BOLT M6X12	1
21	F2021	PIN	1
22	F2022	WASHER	1
23	F2023	FOOTREST LH RR	1
24	F2024	SPRING	1
25	F2025	BALL ϕ 6.35	1



F-20 Frame Body

REF.NO.	PART NO.	DESCRIPTION	Q.T.Y
26	F2026	COTTER 1.6X20	1
27	F2027	BUSH	2
28	F2028	RUBBER	2
29	F2029	NUT M10	1
30	F2030	LINK ASSY ENG HANGER	1
31	F2031	BOLT FLANGE M10X180	1