

JL125T-13 (13" wheel) PARTS EXPLODE DRAWING

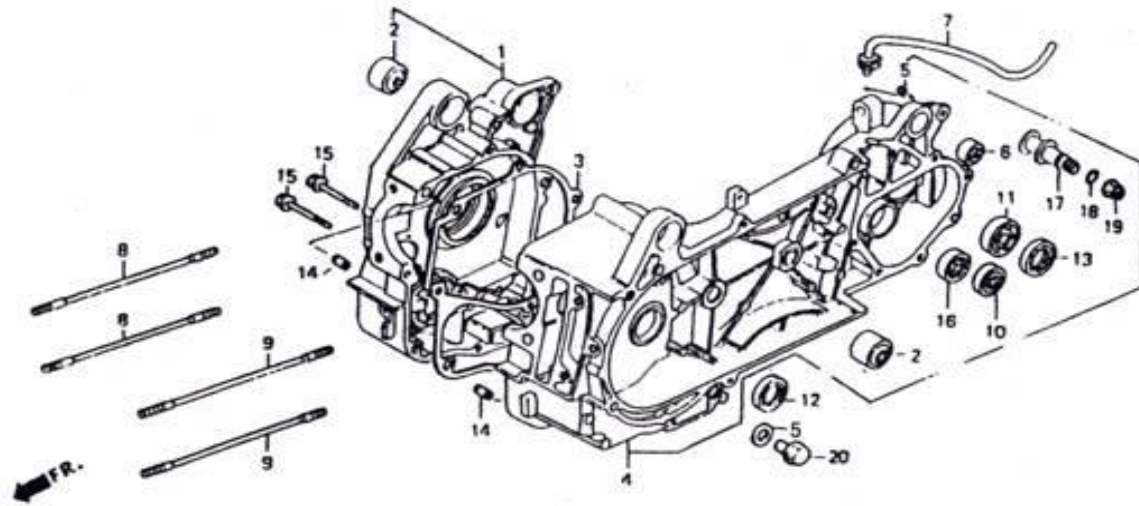
Edition No.: 01 , Year: 2007



CIXI KINGRING MOTORCYCLE CO.,LTD.

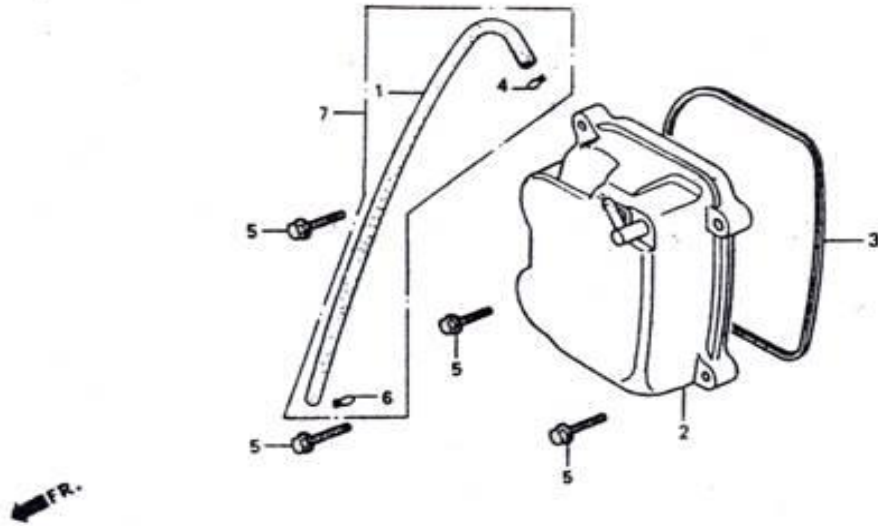
INDEX

E-1 CRANK CASE1
 E-2 CYLINDER HEAD COVER2
 E-3 CYLINDER3
 E-4 RIGHT CRANKCASE COVER4
 E-5 CARBURETOR5
 E-6 DRIVE PULLEY7
 E-7 STARTING MOTOR8
 E-8 FAN COVER·SHROUD9
 E-9 TRANSMISSION.....10
 E-10 CYLINDER HEAD11
 E-11 CAMSHAFT·VALVE12
 E-12 CAM CHAIN·TENSIONER13
 E-13 GENERATOR14
 E-14 OIL PUMP15
 E-15 LEFT CRANKCASE COVER16
 E-16 DRIVEN PULLY17
 E-17 CRANK SHAFT·PISTON18
 F-1 HEADLIGHT.....19
 F-2 SPEEDOMETER20
 F-3 HANDLE STEERING21
 F-4 FRONT BRAKE ASSY.....23
 F-5 FRONT BODY COVER·FLOOR PANEL25
 F-6 FRONT FORK27
 F-7 FRONT WHEEL29
 F-8 REAR WHEEL30
 F-9 SEAT31
 F-10 FUEL TANK32
 F-11 BATTERY33
 F-12 BODY COVER·LUGGAGE BOX.....34
 F-13 AIR CLEANER.....36
 F-14 EXHAUST MUFFLER.....37
 F-15 KICK START ARM·STAND.....38
 F-16 REAR CUSHION.....39
 F-17 SIGNAL LIGHT.....40
 F-18 REAR FENDER41
 F-19 WIRE HARNESS.....42
 F-20 FRAME BODY.....43
 F-21 REAR CARRIER.....45



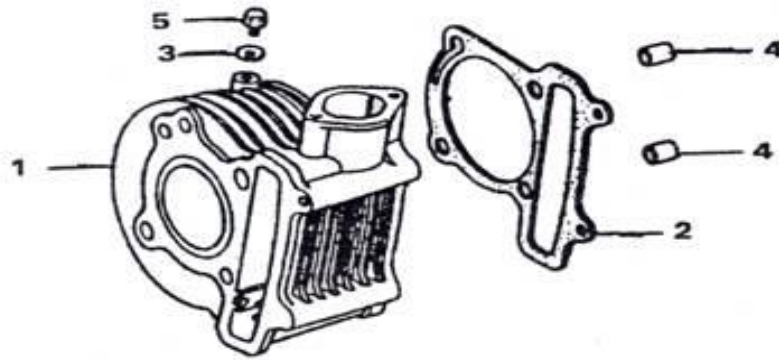
E-1 Crank case

REF.NO.	PART NO.	DESCRIPTION	Q.T.Y	
1	E0101	CRANKCASE ASSY RH	2	
2	E0102	TUBE, ABSORBER FR	2	
3	E0103	GASKET ,CRANKCASE	1	
4	E0104	CRANKCASE ASSY, LH	2	
5	E0105	WASHER	2	
6	E0106	TUBE, ABSORBER RAER	1	
7	E0107	TUBE BREATHER ASSY	1	
8	E0108	BOLT STUD B M8X187.5	1	
9	E0109	BOLT STUD A M8X187.5	2	
10	E0110	BEARING 6301	2	
11	E0111	BEARING 6004MM	1	
12	E0112	OIL SEAL 19.8X30X5	1	
13	E0113	OIL SEAL 27X42X7	1	
14	E0114	PIN DOWEL 8X14	1	
15	E0115	BOLT FLANGE M6X50	2	
16	E0116	BEARING 6002	2	
17	E0117	PIN, BRAKE SHOE ANCHOR	1	
18	E0118	O-RING	1	
19	E0119	NUT FLANGE M8	1	
20	E0120	BOLT, OIL DRAIN	1	



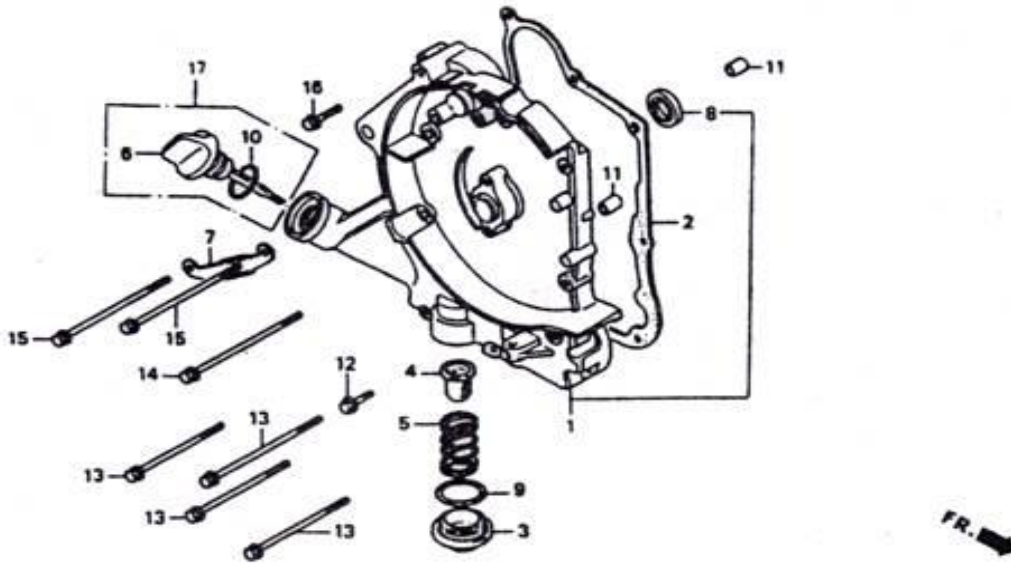
E-2 Cylinder Head Cover

REF.NO.	PART NO.	DESCRIPTION	Q.T.Y	
1	E0201	TUBE BREATHER	1	
2	E0202	CYLINDER HEAD COVER	1	
3	E0203	CASKET, CULINDER HEAD	1	
4	E0204	CLAMP TUBE	1	
5	E0205	BOLT FLANGE 6X25	4	
6	E0206	CLAMP	1	
7	E0207	TUBE ASSY	1	



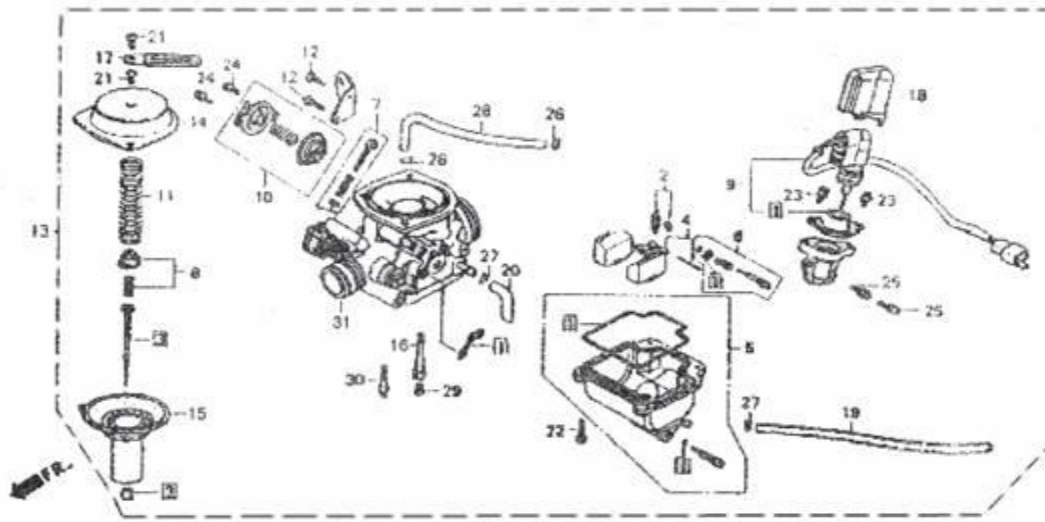
E-3 Cylinder

REF.NO.	PART NO.	DESCRIPTION	Q.T.Y	
1	E0301	CYLINDER COMP	1	
2	E0302	GASKET. CYLINDER	1	
3	E0303	WASHER 6.5	1	
4	E0304	PIN DOEWL 10X16	2	
5	E0305	BOLT FLANGE 6X12	1	



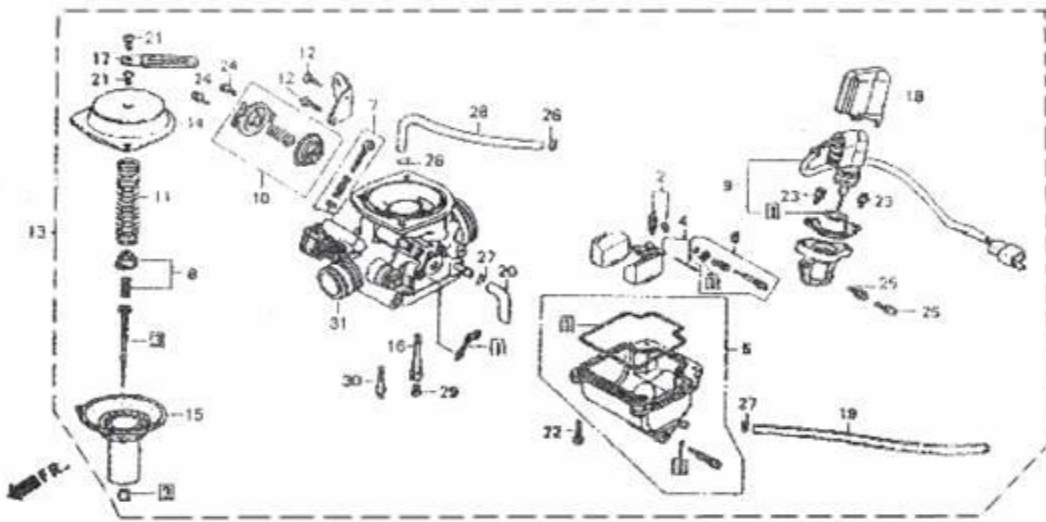
E-4 Right Crankcase Cover

REF.NO.	PART NO.	DESCRIPTION	Q.T.Y	
1	E0401	COVER, RH CRANKCASE	1	
2	E0402	GASKET, RH CRANKCASE COVER	1	
3	E0403	BOLT , OIL DRAIN	1	
4	E0404	OIL FILTER WEB ASSY.	1	
5	E0405	SPRING ,OIL FILTER SCREEN	1	
6	E0406	LUBOIL LEVEL	1	
7	E0407	CLAMPER, MAGNETO	1	
8	E0408	OIL SEAL 19.8X30X5	1	
9	E0409	O-RING	1	
10	E0410	O-RING	1	
11	E0411	PIN DOWEL 8X14	2	
12	E0412	BOLT FLANGE 6X32	1	
13	E0413	BOLT FLANGE 6X95	4	
14	E0414	BOLT FLANGE 6X100	1	
15	E0415	BOLT FLANGE 6X110	2	
16	E0416	BOLT FLANGE 6X40	1	
17	E0417	CAP ASSY.	1	



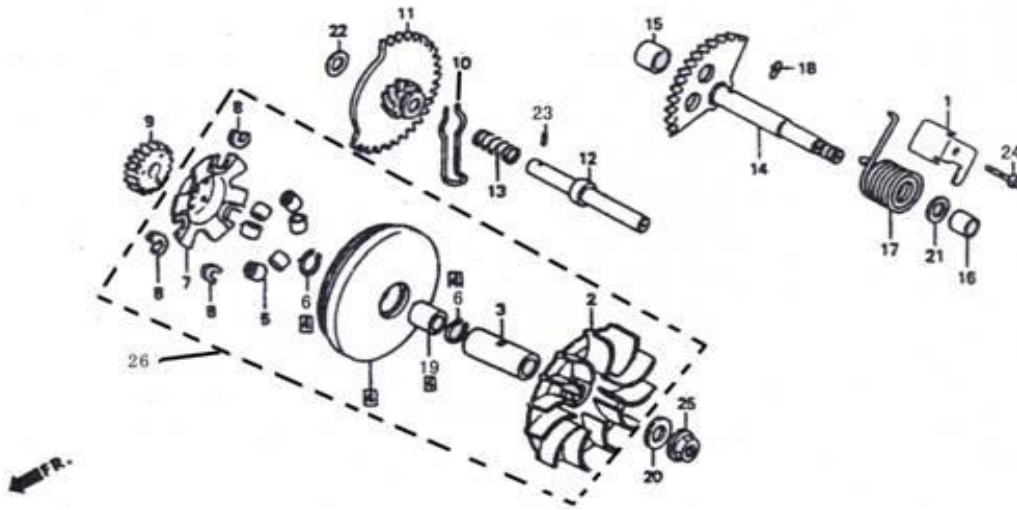
E-5Carburetor

REF.NO.	PART NO.	DESCRIPTION	Q.T.Y	
1	E0501	GASKET SET	1	
2	E0502	VALVE SET FLDAT	1	
3	E0503	NEEDLE SET JET	1	
4	E0504	FLOAT SET	1	
5	E0505	CHAMBER SET, FLDAT	1	
6	E0506	SCREW SET A	1	
7	E0507	SCREW SET B	1	
8	E0508	PLATE SET	1	
9	E0509	VALVE SET, STARTER	1	
10	E0510	VALVE SET HINDERAIR	1	
11	E0511	SPRING	1	
12	E0512	SCREW PAN 5X12	2	
13	E0513	CARBURETOR ASSY	1	
14	E0514	COVER, PISTON VALVE	1	
15	E0515	PISTON VALVE, VACUUM	1	
16	E0516	HOLDER, NEEDLE JET	1	
17	E0517	CLIP PLATE	1	
18	E0518	CAP HOLDER	1	
19	E0519	COVER,FLOODING	1	
20	E0520	TUBE	1	
21	E0521	SCREW M4X8	2	
22	E0522	SCREW M 4X14	4	
23	E0523	SCREW M4X8	2	
24	E0524	SCREW M4X10	2	
25	E0525	SCREW M5X12	2	
26	E0526	CLIP TUBE	2	
27	E0527	CLIP TUBE	2	



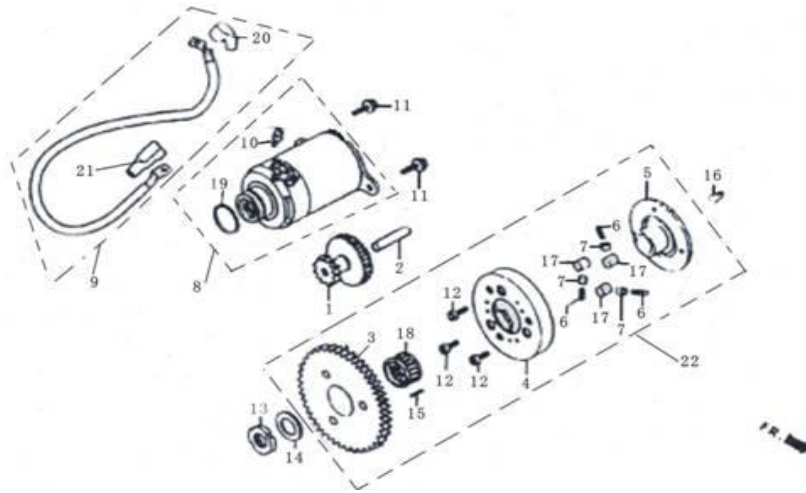
E-5 Carburetor

REF.NO.	PART NO.	DESCRIPTION	Q.T.Y	
28	E0528	TUBE 3.5X210	1	
29	E0529	JET MAIN #112	1	
30	E0530	JET SLOW #35	1	
31	E0531	CARBURETOR BODY	1	



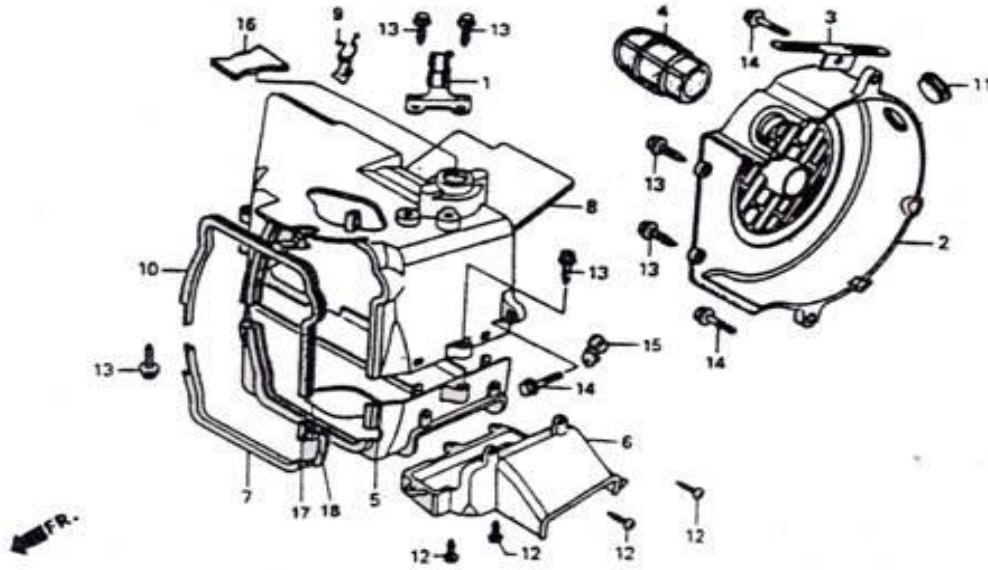
E-6 Drive Pulley

REF.NO.	PART NO.	DESCRIPTION	Q.T.Y
1	E0601	LIMIT PLATE, RETURN BACK	1
2	E0602	GEAR DRIVE	1
3	E0603	BUSHING	1
4	E0604	FACE COMP MOVABLE DRIVE	1
5	E0605	ROLLER SET,WEIGHT	6
6	E0606	CLIP 28	2
7	E0607	PLATE RAMP	1
8	E0608	PIECE SLIDE	3
9	E0609	GEAR KICK DRIVEN (20T)	1
10	E0610	SPRING STARTER	1
11	E0611	GRAR COMP, STARTER	1
12	E0612	SHAFT, STARTER AXEL	1
13	E0613	SPRING, STARTER AXEL	1
14	E0614	AXLE, STARTER	1
15	E0615	BUSH 12X16X12	1
16	E0616	BUSH KICK SPINDLE 14X18X16	1
17	E0617	SPRING ,KICK STARTER	1
18	E0618	PIN SPECIAL 4.5	1
19	E0619	COLLAR, DRIVE GEAR	1
20	E0620	WASHER 12	1
21	E0621	WASHER 14	1
22	E0622	WASHER 12.5	1
23	E0623	ROLLER 3X8.5	1
24	E0624	BOLT FLANGE 6X14	1
25	E0625	NUT FLANGE M12	1
26	E0626	DRIVER ASSY	PAGE 10 OF 98



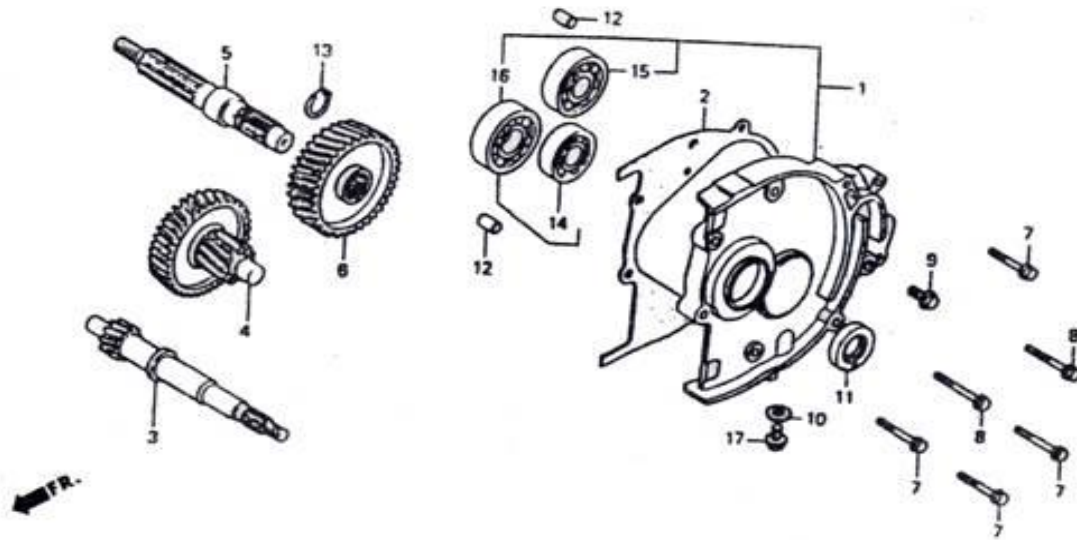
E-7 Starting Motor

REF.NO.	PART NO.	DESCRIPTION	Q.T.Y	
1	E0701	GEAR STARTER REDUCTION	1	
2	E0702	SHAFT STARTER REDUCTION GEAR	1	
3	E0703	GEAR COMP STARTING CLUTCH	1	
4	E0704	OUTER COMP STARTING CLUTCH	1	
5	E0705	FLANGE STARTING CLUTCH	1	
6	E0706	SPRING STARTING CLUTCH ROLLER	3	
7	E0707	CAP STARTINGCLUTCH ROLLER SPRING	3	
8	E0708	MOTOR ASSY STARTER	1	
9	E0709	CABLE STARTER MOTOR	1	
10	E0710	SCREW-WASHER 6X12	1	
11	E0711	BOLT FLANGE 6X20	2	
12	E0712	BOLT SOCKET 6X12	3	
13	E0713	NUT LOCK 22MM	1	
14	E0714	WASHER THRUST 18X31X1	1	
15	E0715	PIN DOWEL 5X6	1	
16	E0716	KEY WOODRUFF 15X14X4	1	
17	E0717	ROLLER 10X10	3	
18	E0718	BEARING NEEDLE 28X32X17	1	
19	E0719	O-RING 24.4X3.1	1	
20	E0720	UPPER RUBBER SOCKET	1	
21	E0721	DOWN RUBBER SOCKET	1	
22	E0722	TRANSCEND CLUTCH	1	



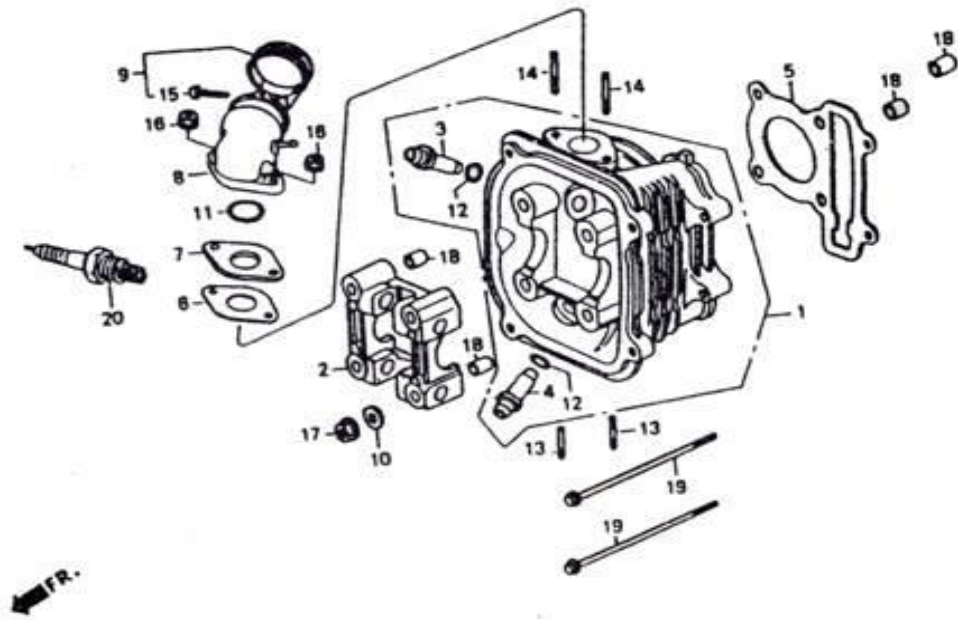
E-8 Fan Cover-Shroud

REF.NO.	PART NO.	DESCRIPTION	Q.T.Y	
1	E0801	CLAMPER , BREATHER TUBE	1	
2	E0802	COVER, COOLING FAN	6	
3	E0803	CABLE CLAMPER, STARTER MOTOR	1	
4	E0804	DUCT, CARBURETOR COOLING	6	
5	E0805	SHROUD A	6	
6	E0806	COVER, FLOW GUIDING	6	
7	E0807	SEAL BAR	1	
8	E0808	COVER B	6	
9	E0809	CORD CLIP, HIGH TENSTON	1	
10	E0810	SEAL BAR	1	
11	E0811	PLUG RUBBER	1	
12	E0812	SCREW TAPPING ST4.8X12-F	5	
13	E0813	SCREW TAPPING ST4.8X16-F	6	
14	E0814	BOLT FLANGE 6X25	3	
15	E0815	CLAMP , OVER FLOW HOSE	1	
16	E0816	PLUG RUBBER	1	
17	E0817	SEAL BAR	1	
18	E0818	SEAL BAR	1	



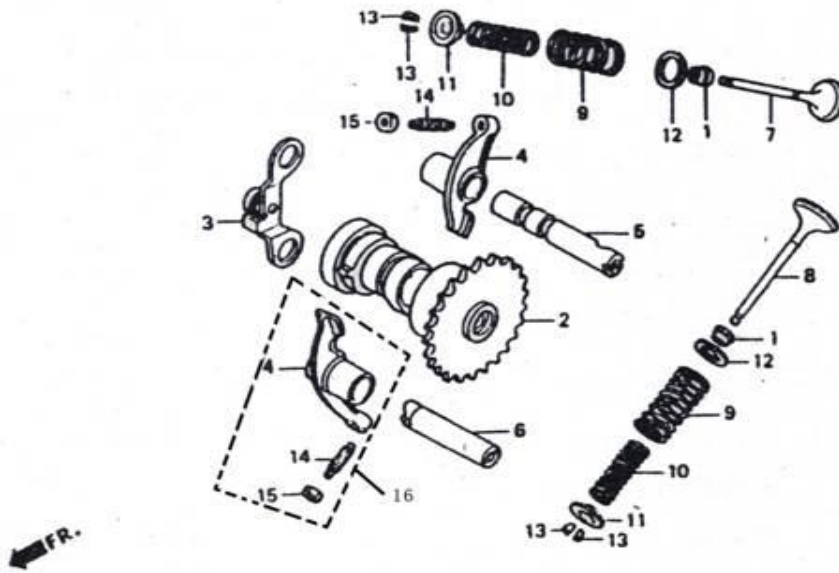
E-9 Transmission

REF.NO.	PART NO.	DESCRIPTION	Q.T.Y	
1	E0901	COVER ASSY GEAR CASE	1	
2	E0902	SEAL GASKET, GEAR CASE	1	
3	E0903	SHAFT DRIVE	1	
4	E0904	COMP, LAYSHAFT	1	
5	E0905	SHAFT FINAL	5	
6	E0906	GEAR FINAL	1	
7	E0907	BOLT FLANGE M6X28	3	
8	E0908	BOLT FLANGE M6X35	3	
9	E0909	BOLT SPECIAL M8 X12	2	
10	E0910	WASHER 8	1	
11	E0911	OIL SEAL 20X32X6	1	
12	E0912	PIN DOWEL 8X14	2	
13	E0913	CIR CLIP 20	1	
14	E0914	BEARING 6202	1	
15	E0915	BRARING 6203	1	
16	E0916	BRARING 6204	1	
17	E0917	BOLT SPECIAL 8X10	1	



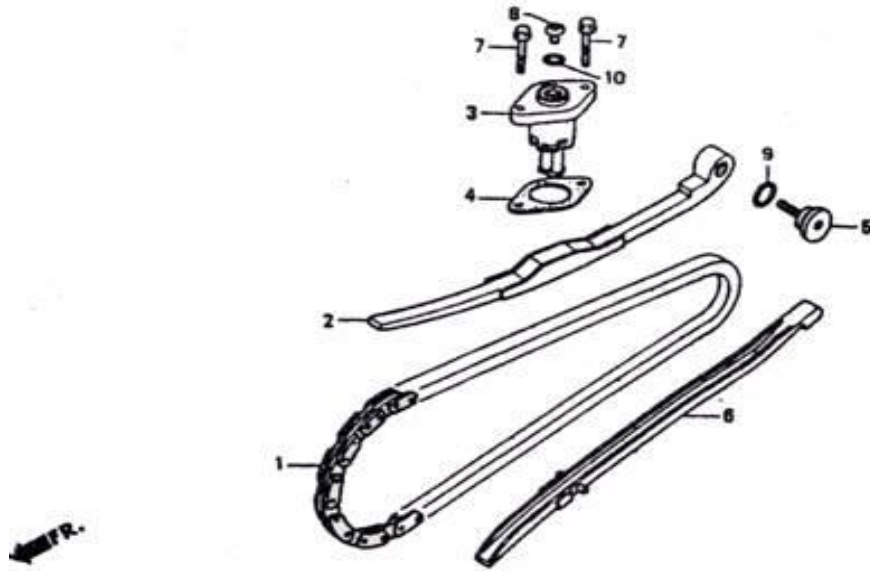
E-10 Cylinder Head

REF.NO.	PART NO.	DESCRIPTION	Q.T.Y	
1	E1001	HEAD COMP, CYLINDER	1	
2	E1002	HOLDER CAMSHAFT	1	
3	E1003	PIPE INLET VALVE	1	
4	E1004	PIPE OUTLET VALVE	1	
5	E1005	GASKET, CYLINDER HEAD	1	
6	E1006	GASKRT, INSULATOR	1	
7	E1007	WASHER, CARBURETOR	1	
8	E1008	INLET PIPE COMP	1	
9	E1009	CLAMP ASSY, INLET PIPE	1	
10	E1010	WASHER 8	4	
11	E1011	O-RING $\phi 27 \times 2.0$	1	
12	E1012	O-RING $\phi 9 \times 1.6$	2	
13	E1013	BOLT 2 STUD	2	
14	E1014	BOLT STUD	2	
15	E1015	BOLT FLANGE 4X25	1	
16	E1016	NUT FLANGE M6	2	
17	E1017	NUT FLANGE M8	4	
18	E1018	PON DOWEL 10X16	4	
19	E1019	BOLT FLANGE 6X100	2	
20	E1020	SPARK PLUG NGK	1	



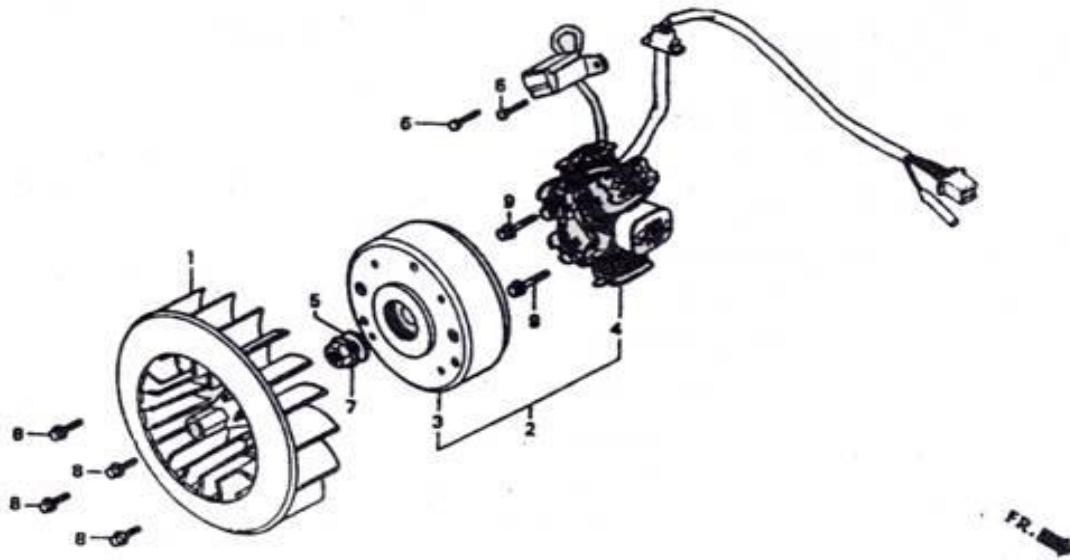
E-11 Camshaft-Valve

REF.NO.	PART NO.	DESCRIPTION	Q.T.Y	
1	E1101	OIL HINDERING COVER COMP	2	
2	E1102	CAMSHAFT COMP	1	
3	E1103	PLATE COMP, STOPPER	1	
4	E1104	ROCKER ARM ,VALVE	2	
5	E1105	SHAFT , COMP IN ROCKER ARM	1	
6	E1106	SHAFT , EX ROCKER ARM	1	
7	E1107	VALVE IN	1	
8	E1108	VALVE EX	1	
9	E1109	SPRING, VALVE OUTER	2	
10	E1110	SPRING, VALVE INNER	2	
11	E1111	RETAINER, VALVE SPRING	2	
12	E1112	SEAT, VALVE SPRING OUTER	2	
13	E1113	CLAMP, VALVE	4	
14	E1114	SCREW, ADJUSTING	2	
15	E1115	NUT, ADJUSTING	2	
16	E1116	VALUE ROCKER ASSY.	2	



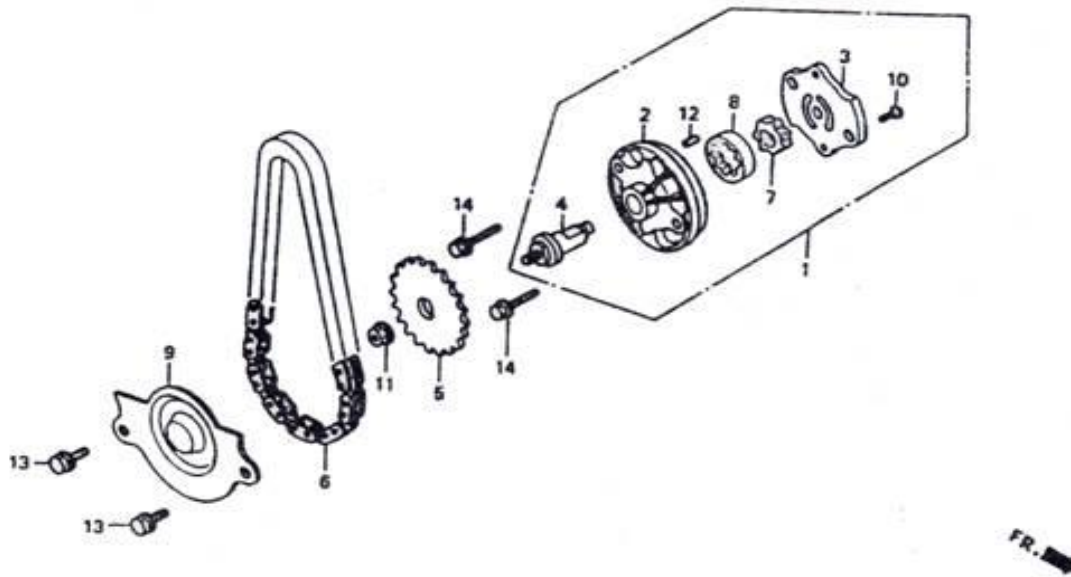
E-12 Cam Chain Tensioner

REF.NO.	PART NO.	DESCRIPTION	Q.T.Y	
1	E1201	CHAIN	1	
2	E1202	HOLD BAR, CHAIN TENSION	1	
3	E1203	HOLD BLOCK,CHAIN TENSION	1	
4	E1204	SEAL WASHER,CHAIN ADJUSTOR	40	
5	E1205	SCREW, PULL POLE	1	
6	E1206	PROTECTOR, CHAIN	1	
7	E1207	BOLT M6X22	2	
8	E1208	BLOCKED SCREW	1	
9	E1209	O-RING	1	
10	E1210	O-RING	1	



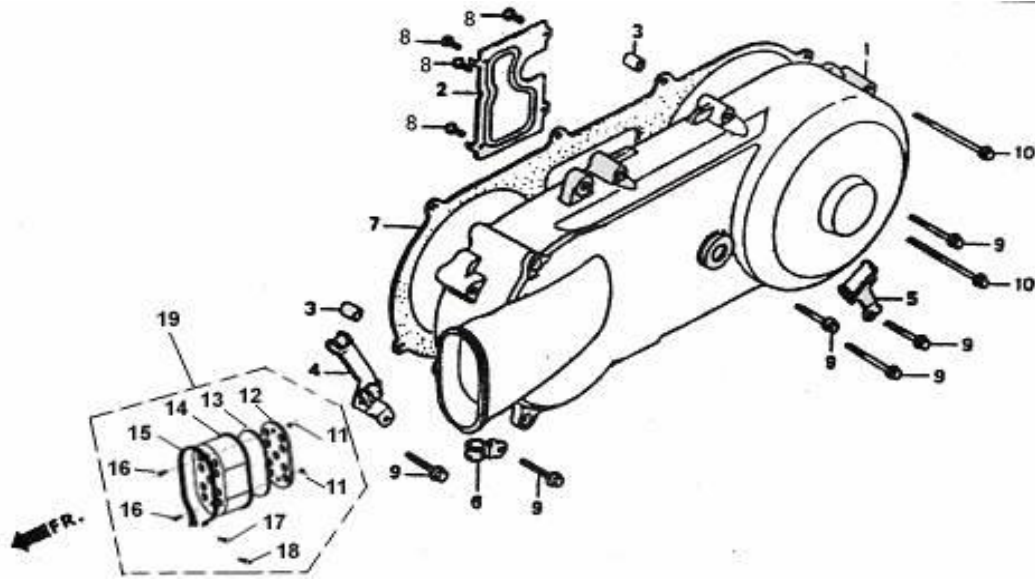
E-13 MAGNETO

REF.NO.	PART NO.	DESCRIPTION	Q.T.Y	
1	E1301	COOLING FAN	1	
2	E1302	MAGNETO	1	
3	E1303	ROTOR	1	
4	E1304	STATOR	1	
5	E1305	WASHER 12MM	1	
6	E1306	BOLT M5X12	2	
7	E1307	NUT 12MM	1	
8	E1308	BOLT M6X18	4	
9	E1309	BOLT M6X20	2	



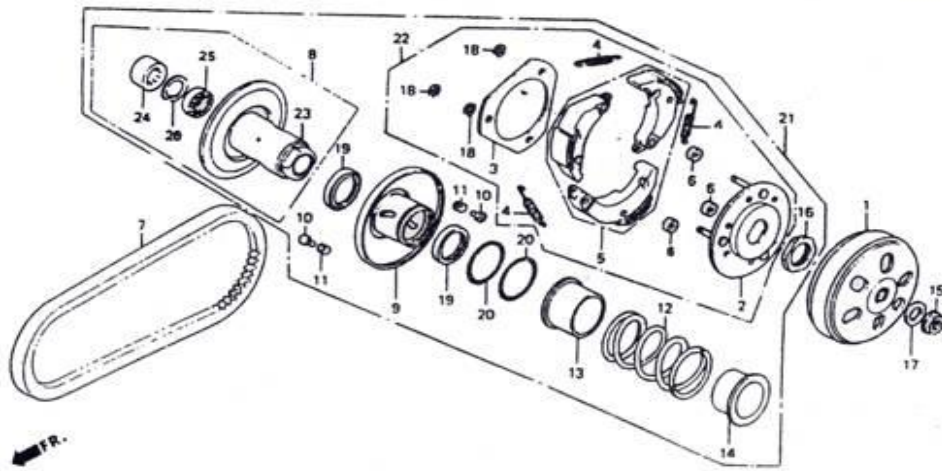
E-14 Oil pump

REF.NO.	PART NO.	DESCRIPTION	Q.T.Y	
1	E1401	PUMP ASSY	1	
2	E1402	PUMP BODY	1	
3	E1403	COVER, PUMP	1	
4	E1404	AXEL, PUMP	1	
5	E1405	SPROCKET WHEEL, PUMP	1	
6	E1406	CHAIN, PUMP DRIVE	1	
7	E1407	ROTOR, INNDER	1	
8	E1408	ROTOR, OUTER	1	
9	E1409	SEPARATE BAR, LUBOIL	1	
10	E1410	SCREW M3X10	1	
11	E1411	NUT M6	1	
12	E1412	PIN 4X6.5	1	
13	E1413	BOLT M6X12	2	
14	E1414	BOLT M6X25	2	



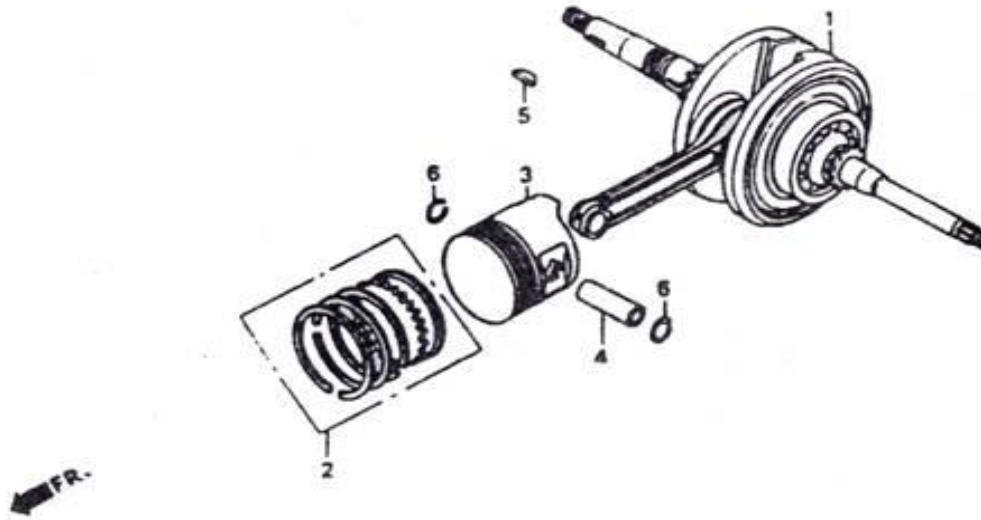
E-15 Left Crankcase Cover

REF.NO.	PART NO.	DESCRIPTION	Q.T.Y	
1	E1501	COVER,CRANKCASE LH	1	
2	E1502	BOARD, VENTILATION	1	
3	E1503	LOCATION PIN	2	
4	E1504	CABLE CLAMP, THROTTLE	1	
5	E1505	CABLE CLAMP, BRAKE	1	
6	E1506	CLAMP, FLOW PIPE	1	
7	E1507	SEAL WASHER, CRANKCASE LH	1	
8	E1508	SCREW M4X8	4	
9	E1509	BOLT M6X40	6	
10	E1510	BOLT M6X65	2	
11	E1511	NUT M4	2	
12	E1512	INNER COVER,VENTILATION	1	
13	E1513	FILTER WEB	1	
14	E1514	OUTER COVER,VENTILATION	1	
15	E1515	HOOP	1	
16	E1516	NUT M4X16	2	
17	E1517	FLAT WASHER 4	1	
18	E1518	SCREW M4X35	1	
19	E1519	COVER ASSY, Ventilation	1	



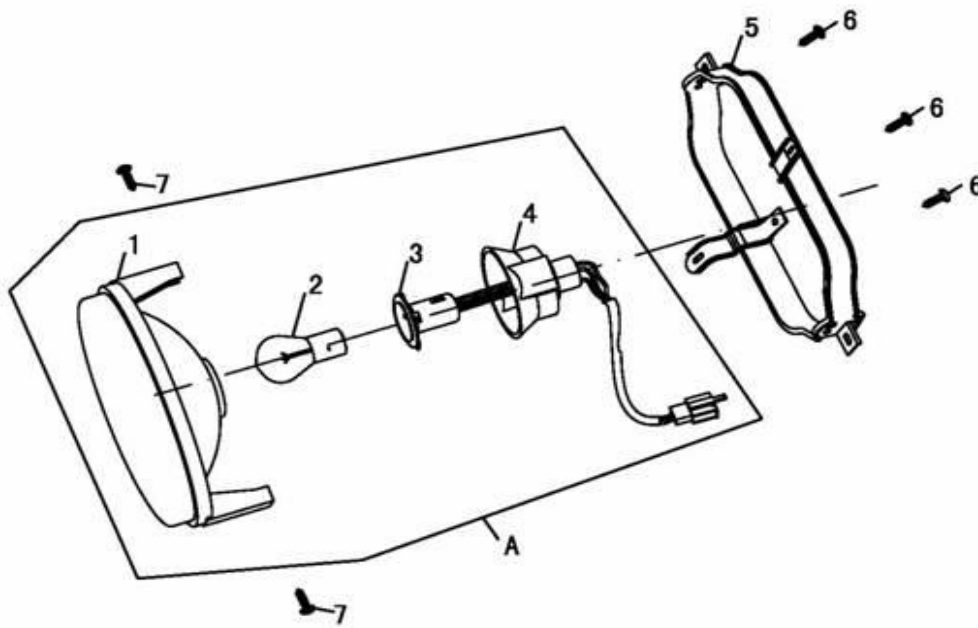
E-16 Driven Pully

REF.NO.	PART NO.	DESCRIPTION	Q.T.Y	
1	E1601	OUTER COVER ASSY,CLUTCH	1	
2	E1602	DRIVE BOARD, CLUTCH	1	
3	E1603	SIDE-BOARD, CLUTCH	1	
4	E1604	SPRING, CLUTCH	1	
5	E1605	WEIGHT, CLUTCH	1	
6	E1606	WASHER, CLUTCH	3	
7	E1607	BELT, DRIVE	1	
8	E1608	DISK ASSY, DRIVEN	1	
9	E1609	DISK ASSY, DRIVE	1	
10	E1610	PIN, ROLLER	3	
11	E1611	ROLLER	3	
12	E1612	SPRING, DRIVE	1	
13	E1613	OIL SEAL, TUBE	1	
14	E1614	TUBE	1	
15	E1615	NUT	1	
16	E1616	SPECIAL NUT M28	1	
17	E1617	WASHER	3	
18	E1618	CLAMP	3	
19	E1619	OIL SEAL 34X41X4	2	
20	E1620	O-RING	2	
21	E1621	STRAP WHEEL ASSY, DRIVEN	1	
22	E1622	DRIVE BOARD ASSY	1	
23	E1623	STRAP DISK, DRIVEN	1	
24	E1624	BEARING 20X29X18	1	
25	E1625	BEARING 6902U	1	
26	E1626	CLAMP 28		



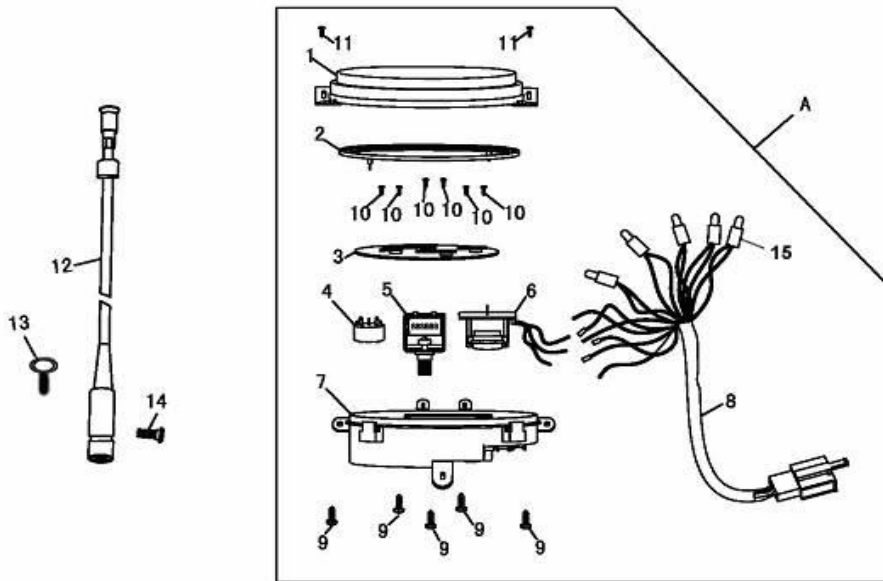
E-17 Crank Shaft·Piston

REF.NO.	PART NO.	DESCRIPTION	Q.T.Y	
1	E1701	CRANKSHAFT	1	
2	E1702	PISTON RING ASSY	1	
3	E1703	PISTON	1	
4	E1704	PIN, PISTON	1	
5	E1705	CLIP	1	
6	E1706	CIRCLIP, PISTON PIN	2	



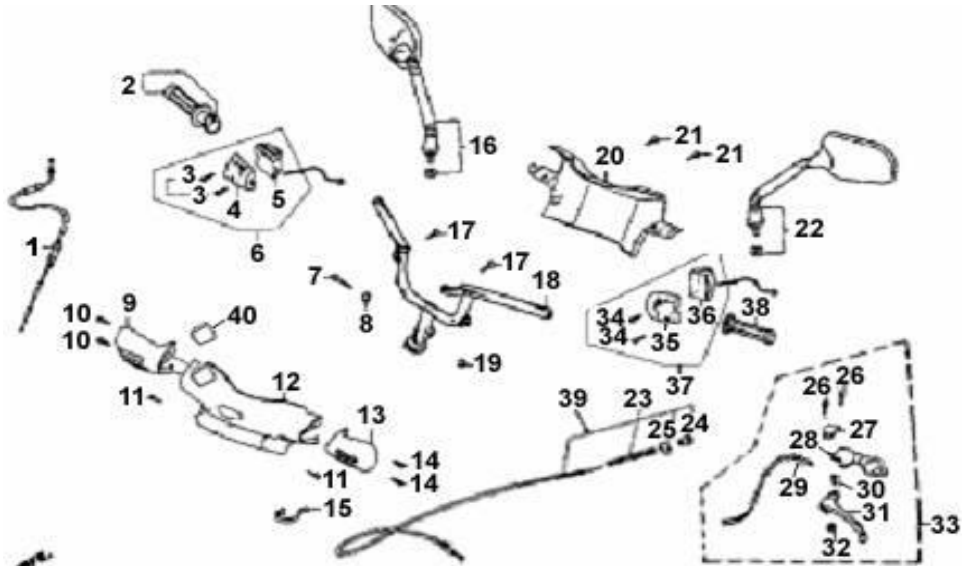
F-1 Head Light

REF.NO.	PART NO.	DESCRIPTION	Q.T.Y	
A	F01A	HEAD LAMP ASSY	1	
1	F0101	FRONT COVER, HEADLAMP	1	
2	F0102	BULB	1	
3	F0103	SOCKET	1	
4	F0104	RUBBER,SOCKET	1	
5	F0105	BRACKET, HEAD LAMP	1	
6	F0106	SCREW ST4.8X13	3	
7	F0107	BOLT M5X8	2	



F-2 Speedometer

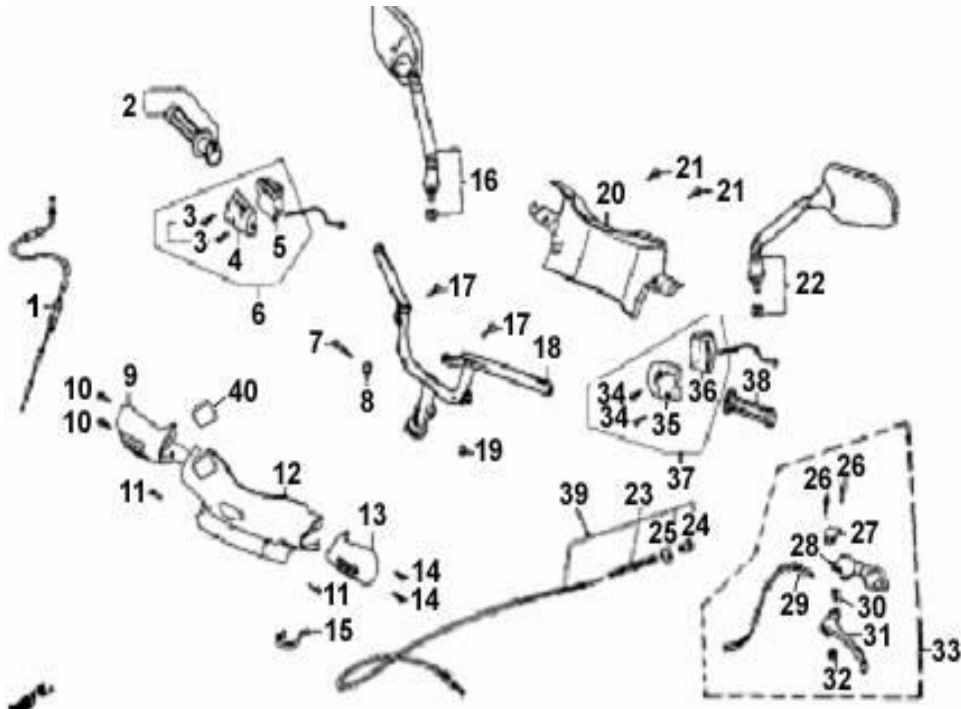
REF.NO.	PART NO.	DESCRIPTION	Q.T.Y	
A	F02A	METER ASSY	1	
1	F0201	COVER, METER	1	
2	F0202	CLIP, METER DIAL	1	
3	F0203	METER DIAL	1	
4	F0204	SPEEDOMETER	1	
5	F0205	MILEAGE METER	1	
6	F0206	FUEL METER	1	
7	F0207	LOW SHELL, METER	1	
8	F0208	CABLE, METER	1	
9	F0209	SCREW ST4.8X16	5	
10	F0210	SCREW ST2.5X5	6	
11	F0211	SCREW ST3.9X12	2	
12	F0212	TUBE, MILEAGE METER	1	
13	F0213	CLAMP, MILEAGE CABLE	1	
14	F0214	SCREW M5X18	1	
15	F0215	INDICATION BULB	5	



F-3 Handle Steering

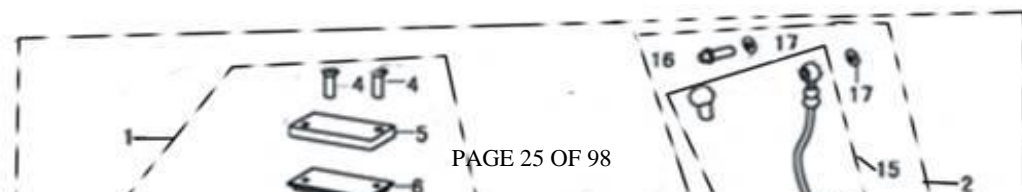
REF.NO.	PART NO.	DESCRIPTION	Q.T.Y	
1	F0301	CABLE,THROTTLER	30	
2	F0302	JACKET, THROTTLER	1	
3	F0303	SCREW M5X25	2	
4	F0304	UPPER SOCKET, BRAKE RH	1	
5	F0305	LOWER SOCKET, BRAKE RH	1	
6	F0306	BRAKE ASSY, RH	1	
7	F0307	BOLTM M10X45	1	
8	F0308	BUSHING	1	
9	F0309	COVER, GRIP RH HONDA RED	20	
	F0309	COVER, GRIP RH SUZUKI RED	20	
10	F0310	SCREW ST3.9X12	2	
11	F0311	BOLT M6X10	2	
12	F0312	FRONT COVER,FACE	1	
13	F0313	HANDLE COVER(LH) HONDA RED	20	
	F0313	HANDLE COVER(LH) SUZUKI RED	20	
14	F0314	SCREW ST3.9X12	2	
15	F0315	CLAMP	1	
16	F0316	MIRROR, RH	1	
17	F0317	SCREW ST3.9X12	2	
18	F0318	STEERING GRIP	1	
19	F0319	LOCKNUT M10	1	
20	F0320	COVER METER	1	
21	F0321	SCREW ST3.9X12	2	
22	F0322	MIRROR LH	1	
23	F0323	RETURNED SPRING	1	
24	F0324	ADJUST NUT	1	

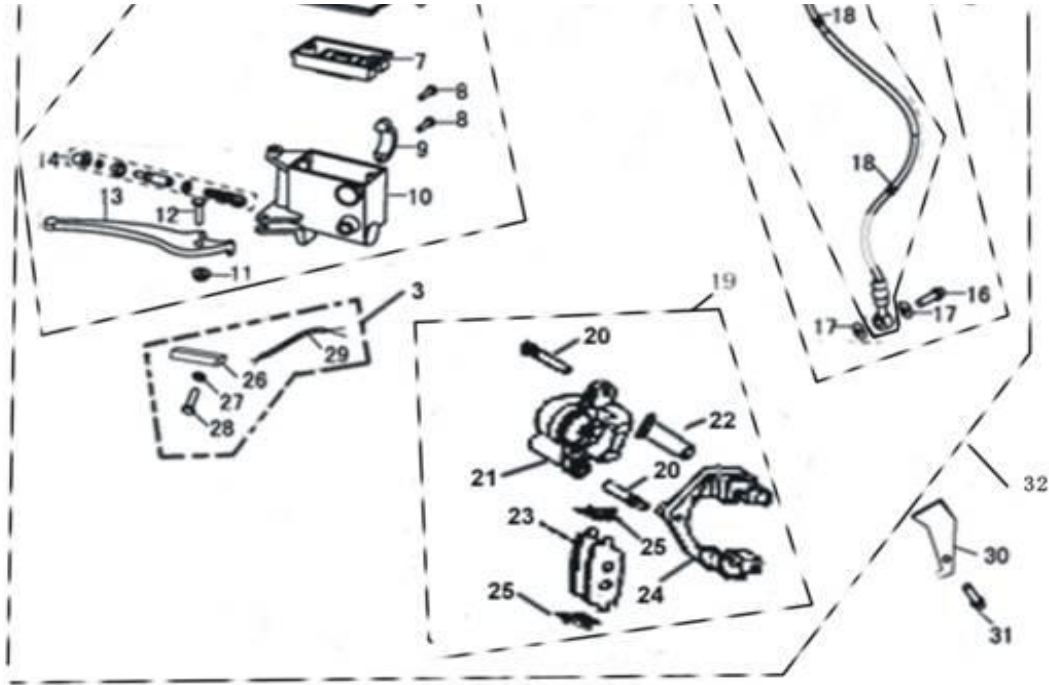
25	F0325	JOINT PIPE	1	
----	-------	------------	---	--



F-3 Handle Steering

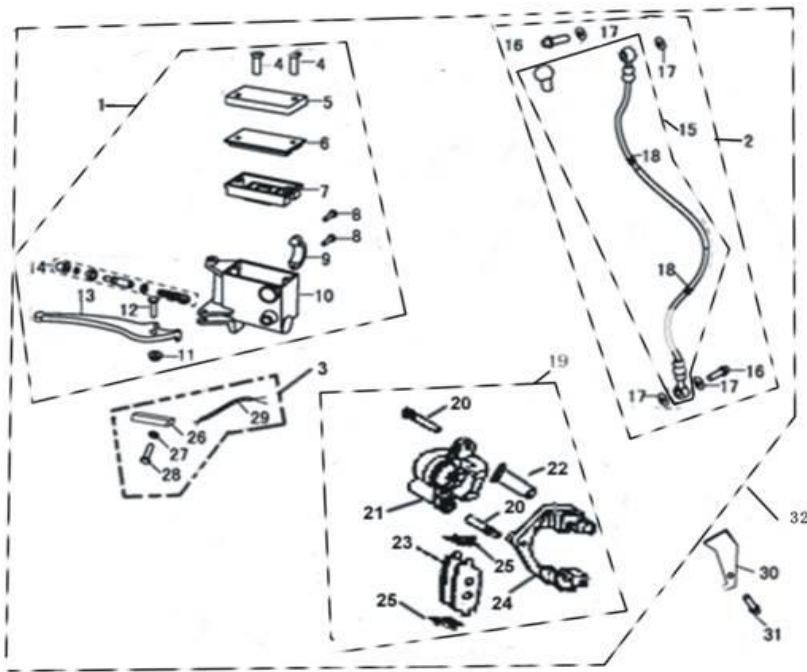
REF.NO.	PART NO.	DESCRIPTION	Q.T.Y	
26	F0326	NUT M6X25	2	
27	F0327	HOLDER, UPPER STEERING GRIP	1	
28	F0328	HOLDER, LOWER STEERING GRIP	1	
29	F0329	CABLE, BRAKE	1	
30	F0330	BOLT M5X25	1	
31	F0331	GRIP, RH BRAKE	1	
32	F0332	NUT M5	1	
33	F0333	HANDLE ASSY, LH	1	
34	F0334	SCREW M5X35	2	
35	F0335	SOCKET UPPER,LH BRAKE	1	
36	F0336	SOCKET UPPER,LH BRAKE	1	
37	F0337	ASSY, BRAKE LH	1	
38	F0338	HANDLE, LH	1	
39	F0339	CABLE, BRAKE RR	1	
40	F0340	WINDOW, DISK BRAKE	1	





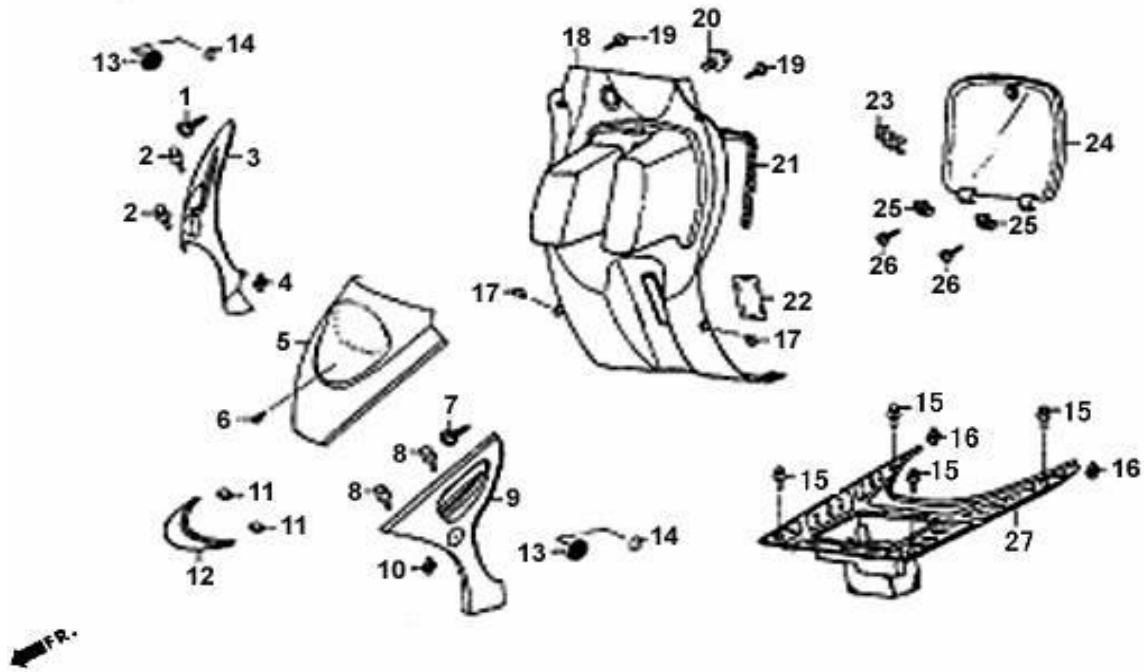
F-4 Front Brake Assy.

REF.NO.	PART NO.	DESCRIPTION	Q.T.Y	
1	F0401	PUMP ASSY, BRAKE FR	1	
2	F0402	PIPE ASSY, FR BRAKE	1	
3	F0403	SWITCH ASSY, BRAKE	1	
4	F0404	SCREW M4X10	2	
5	F0405	LID, LIQUID CASE	1	
6	F0406	BRACKET, SEAL FILM	1	
7	F0407	SEAL FILM	1	
8	F0408	Bolt M6×22	2	
9	F0409	HOLDER, SOCKET	1	
10	F0410	PUMP, BRAKE	1	
11	F0411	Nut M6	1	
12	F0412	NUT M6X30	1	
13	F0413	GRIP, BRAKE	1	
14	F0414	PISTON ASSY	1	
15	F0415	PIPE ASSY, BRAKE	1	
16	F0416	BOLT	2	
17	F0417	WASHER	4	
18	F0418	RING	2	
19	F0419	PUMP ASSY, LOWER	1	



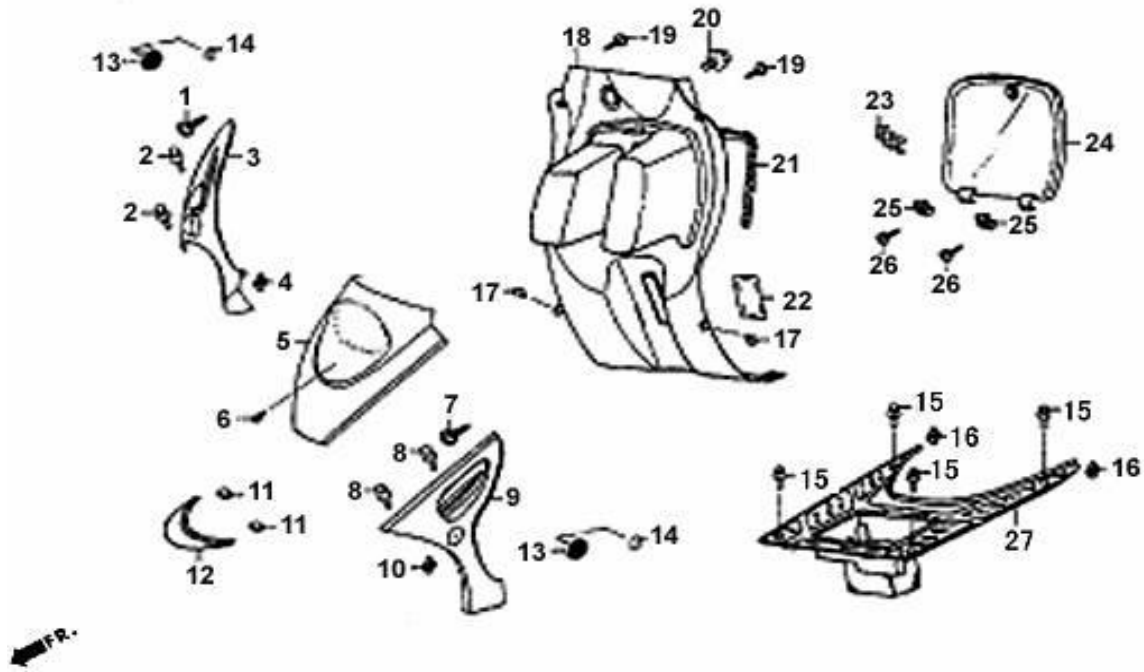
F-4 Front Brake Assy.

REF.NO.	PART NO.	DESCRIPTION	Q.T.Y	
20	F0420	SCREW M8X35	2	
21	F0421	PUMP LOWER	1	
22	F0422	LOCATION PIN	1	
23	F0423	PAD, BRAKE	40	
24	F0424	CLAMP, BRAKE	1	
25	F0425	FIXATION SHEET, BRAKE PAD	2	
26	F0426	SWITCH, BRAKE	1	
27	F0427	WASHER 4	1	
28	F0428	SCREW M4X12	1	
29	F0429	CABLE, BRAKE	1	
30	F0430	CLAMP,OIL TUBE	1	
31	F0431	SCREW M6X10	1	
32	F0432	DISK BRAKE	1	



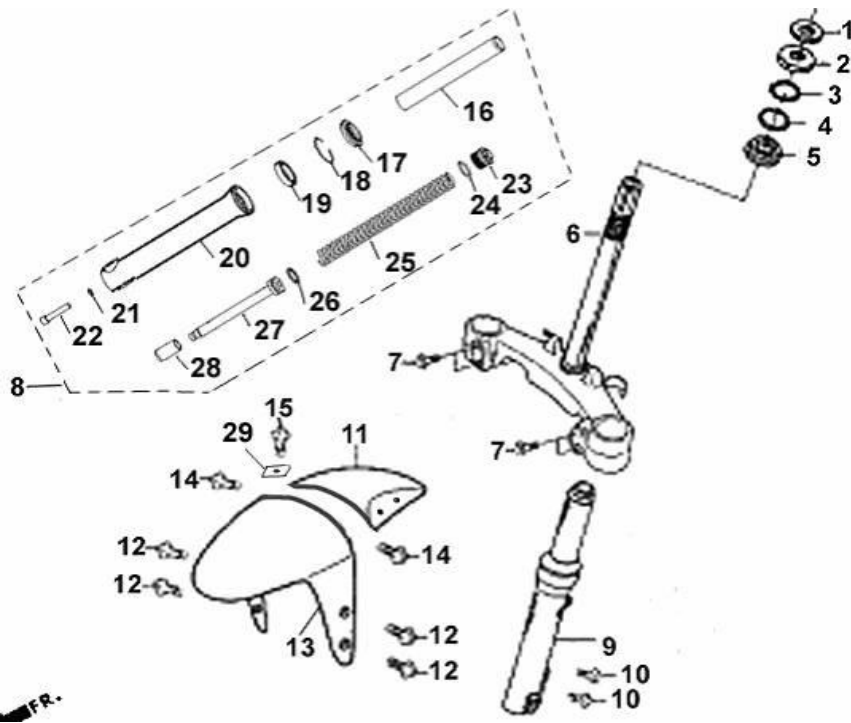
F-5 Front Body cover-Floor Panel

REF.NO.	PART NO.	DESCRIPTION	Q.T.Y	
1	F0501	SCREW ST3.9X13	1	
2	F0502	BOLT M6X12	2	
3	F0503	SAFE BAR, RH FR	1	
4	F0504	REED	1	
5	F0505	COVER , FACE FR	1	
6	F0506	SCREW M6X12	1	
7	F0507	SCREW ST3.9X12	1	
8	F0508	BOLT M6X12	2	
9	F0509	SAFE BAR , LH FR	1	
10	F0510	REED	1	
11	F0511	CLIP, FLOW-GUIDE COVER	3	
12	F0512	FLOW GUIDE COVER ,FR	1	
13	F0513	REFLECTOR LH & RH	2	
14	F0514	NUT M6	2	
15	F0515	BOLT M6X16	4	
16	F0516	REED	2	
17	F0517	BOLT M6X16	2	
18	F0518	LUGGAGE BOX FR	1	
19	F0519	SCREW ST3.9X12	2	
20	F0520	BOLT M6X16	1	



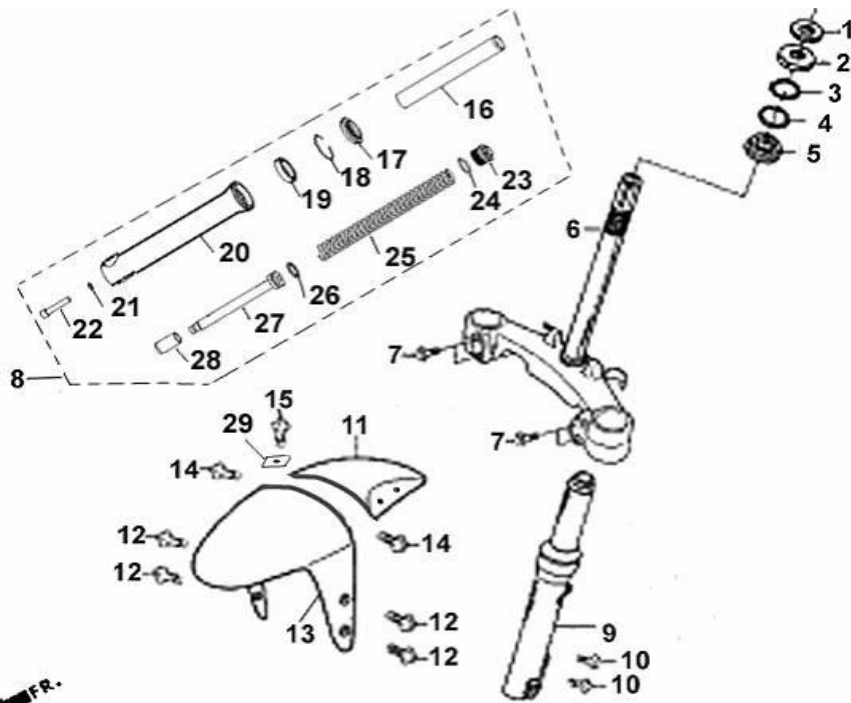
F-5 Front Body Cover/Floor Panel

REF.NO.	PART NO.	DESCRIPTION	Q.T.Y	
21	F0521	SPONGE	1	
22	F0522	BOARD , LUAAGE BOX	1	
23	F0523	HOOK	1	
24	F0524	COVER, LUAAGE BOX FR	1	
25	F0525	ROCKER, LUAAGE BOX FR	2	
26	F0526	SCREW ST 3.9X12	2	
27	F0527	PEDAL	1	



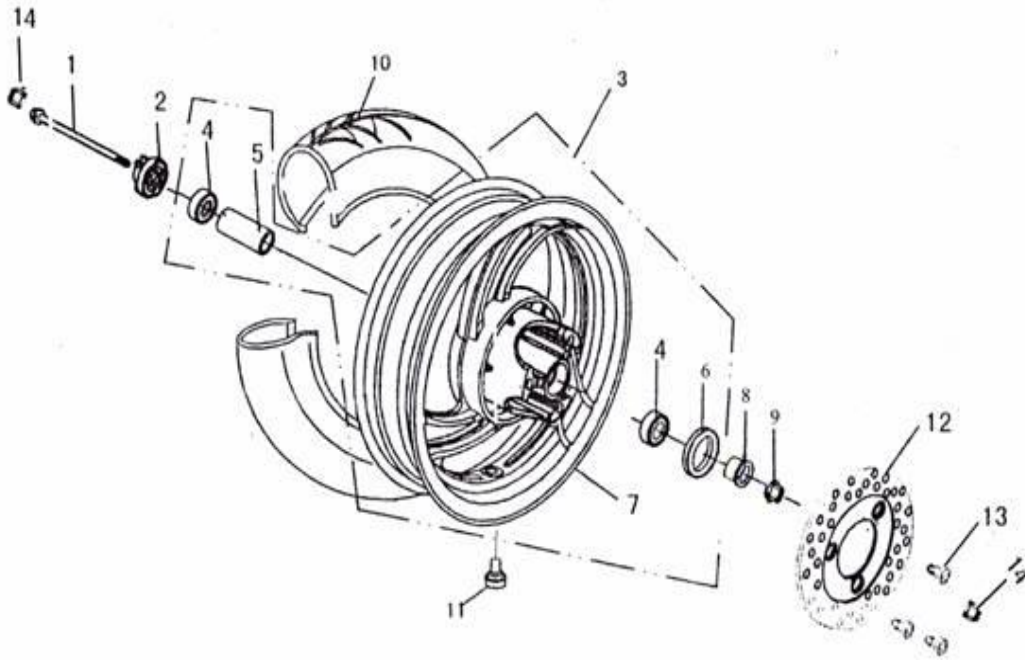
F-6 Front Absorber

REF.NO.	PART NO.	DESCRIPTION	Q.T.Y	
1	F0601	LOCKNUT	1	
2	F0602	STEEL-SOCKET	1	
3	F0603	STEELBALL UPPER	26	
4	F0604	STEELBALL LOW	30	
5	F0605	STEEL-SOCKET	1	
6	F0606	DIRECTION POLE	1	
7	F0607	BOLT M8X40	4	
8	F0608	ABSORBER FR RH	1	
9	F0609	ABSORBER FR LH	1	
10	F0610	BOLT M8X32	2	
11	F0611	REAR PART,FENDER FR	1	
12	F0612	BOLT M6X14	4	
13	F0613	FR PART, FR FENDER	1	
14	F0614	SEAL, BOLT M6X12	1	
15	F0615	BOLT M6X16	1	
16	F0616	INNER TUBE, FORK FR	1	



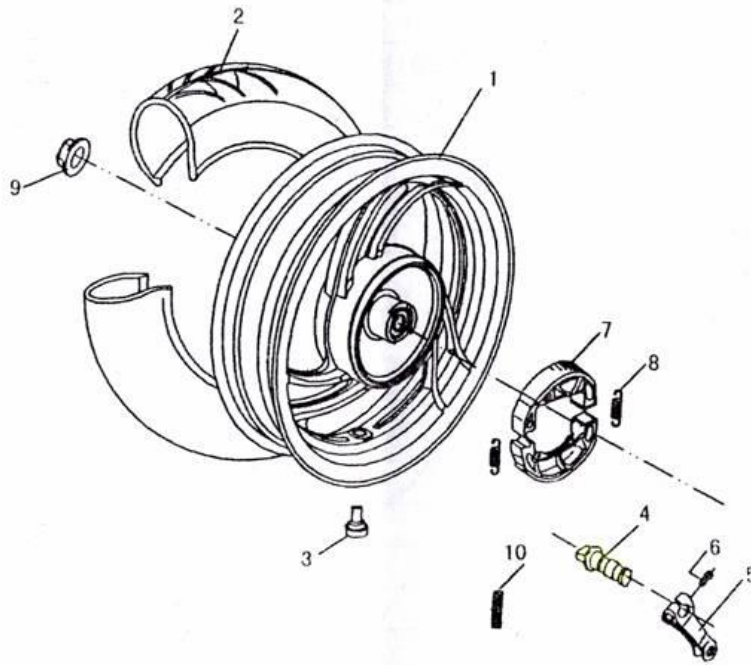
F-6 Front Absorber

REF.NO.	PART NO.	DESCRIPTION	Q.T.Y	
17	F0617	SEAL, FR FORK	1	
18	F0618	CIRCLIP, FR FORK	1	
19	F0619	OIL SEAL, FR FORK	1	
20	F0620	TUBE,FORK FR	1	
21	F0621	WASHER, SEAL	1	
22	F0622	BOLT	1	
23	F0623	SPECIAL NUT	1	
24	F0624	O-RING	1	
25	F0625	MAIN SPRING	1	
26	F0626	RING, PISTON	1	
27	F0627	PLUG, POLE	1	
28	F0628	JOINT, OIL BLOCKED	1	
29	F0629	REED	1	



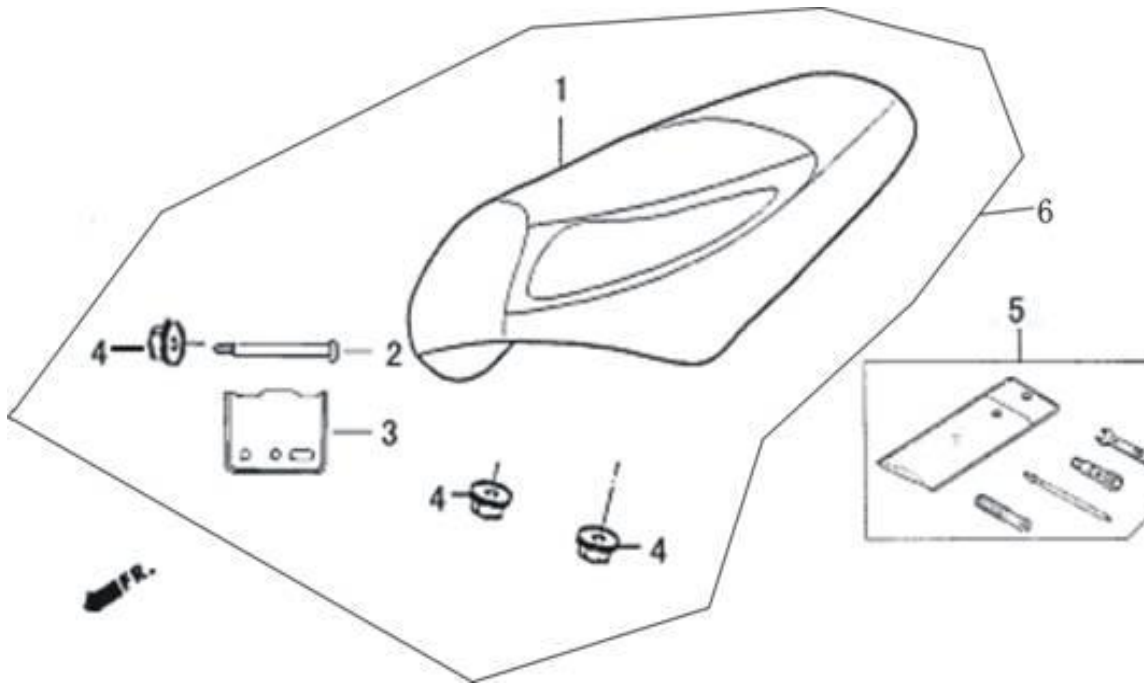
F-7 Front Wheel

REF.NO.	PART NO.	DESCRIPTION	Q.T.Y	
1	F0701	AXEL, FR WHEEL	1	
2	F0702	COUNTER	1	
3	F0703	RIM ASSY, FR 130/60-13	1	
4	F0704	BEARING 6201	2	
5	F0705	MIDDLE BUSH	1	
6	F0706	OIL SEAL	1	
7	F0707	RIM FR	5	
8	F0708	BUSH	1	
9	F0709	NUT M12	1	
10	F0710	TIRE	1	
11	F0711	VALVE	1	
12	F0712	DISK BRAKE	1	
13	F0713	BOLT DISK BRAKE	3	
14	F0714	CAP φ14	2	



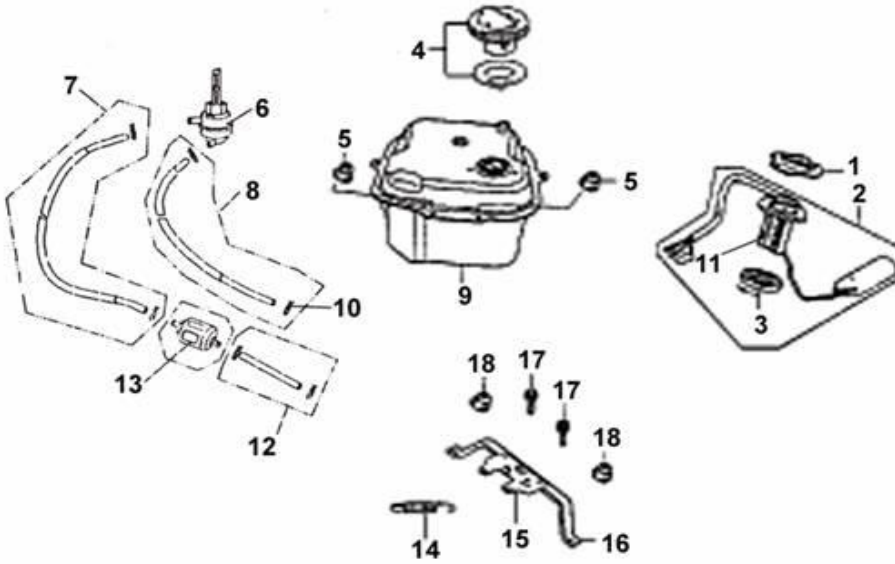
F-8 Rear Wheel

REF.NO.	PART NO.	DESCRIPTION	Q.T.Y	
1	F0801	REAR RIM	5	
2	F0802	TIRE 130/60-13	1	
3	F0803	VALVE	1	
4	F0804	CAMSHAFT REAR BRAKE	1	
5	F0805	ROCKER, REAR BRAKE	1	
6	F0806	BOLT M6X20	1	
7	F0807	PAD, REAR BRAKE	20	
8	F0808	SPRING	2	
9	F0809	NUT M16X1.5	1	
10	F0810	SPRING	1	



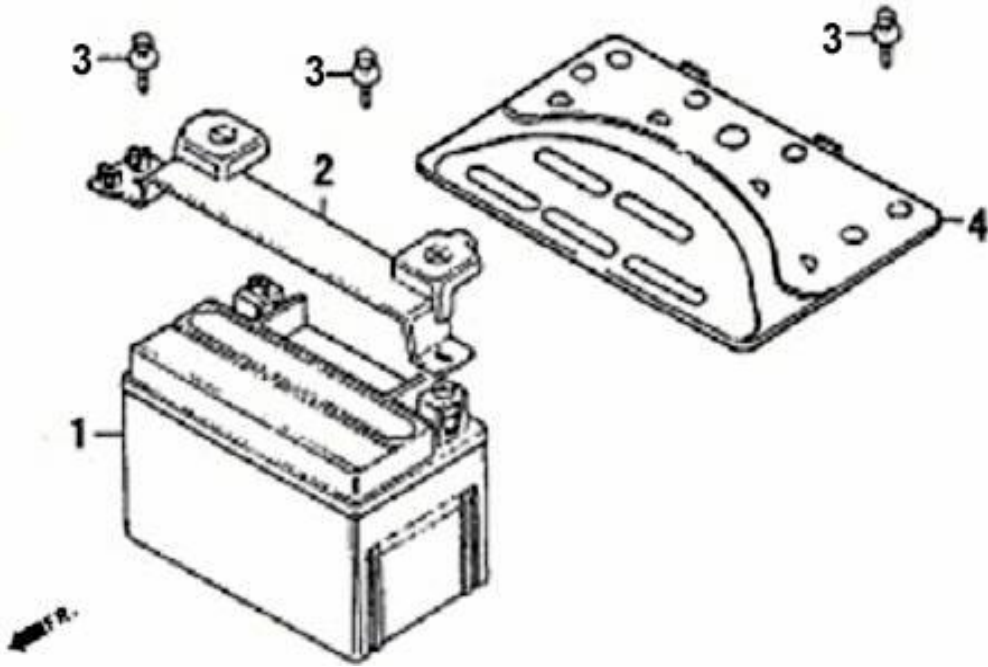
F-9 Cushion

REF.NO.	PART NO.	DESCRIPTION	Q.T.Y	
1	F0901	CUSHION	1	
2	F0902	AXEL	1	
3	F0903	REAR PLATE, CUSHION	1	
4	F0904	NUT M6	3	
5	F0905	USUAL TOOLS	1	
6	F0906	SEATS	1	



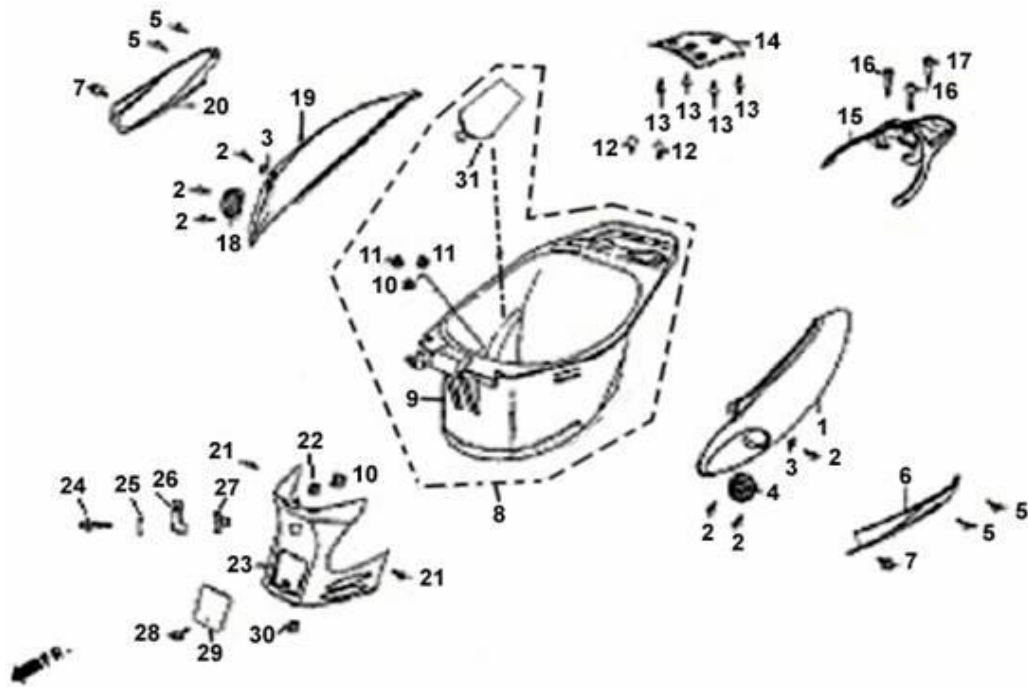
F-10 Fuel Tank

REF.NO.	PART NO.	DESCRIPTION	Q.T.Y	
1	F1001	HOLDER, OIL SENSOR	1	
2	F1002	OIL SENSOR ASSY	1	
3	F1003	SEAL WASHER	1	
4	F1004	OIL TANK COVER	1	
5	F1005	NUT M6	2	
6	F1006	SWITCH , OIL DRAIN	1	
7	F1007	OIL PIPE	1	
8	F1008	PIPE, VACUUM	1	
9	F1009	OIL TANK	1	
10	F1010	CLIP	1	
11	F1011	OIL SENSOR		
12	F1012	MINOR OIL PIPE	1	
13	F1013	FILTER	1	
14	F1014	SPRING,CUSHION LOCK	1	
15	F1015	BASE, CUSHION LOCK	1	
16	F1016	INSTALL BOARD, CUSHION LOCK BASE	1	
17	F1017	BOLT M6X16	2	
18	F1018	NUT M6	2	



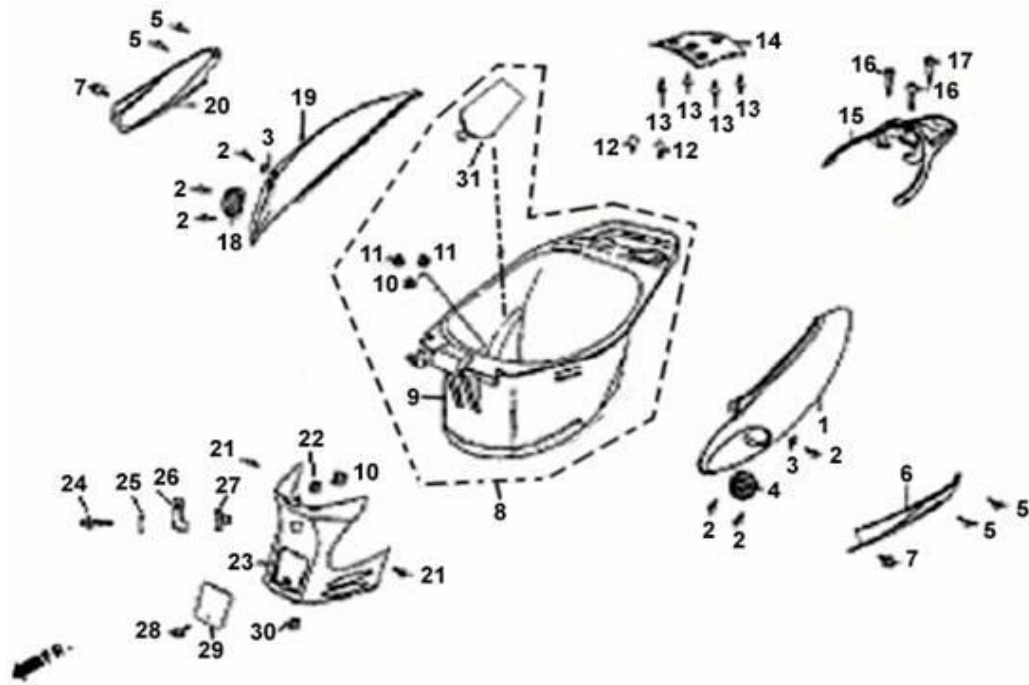
F-11 Battery

REF.NO.	PART NO.	DESCRIPTION	Q.T.Y	
1	F1101	BATTERY	1	
2	F1102	HOLDER,BATTERY	1	
3	F1103	NUT M5X12	3	
4	F1104	LID, BATTERY	1	



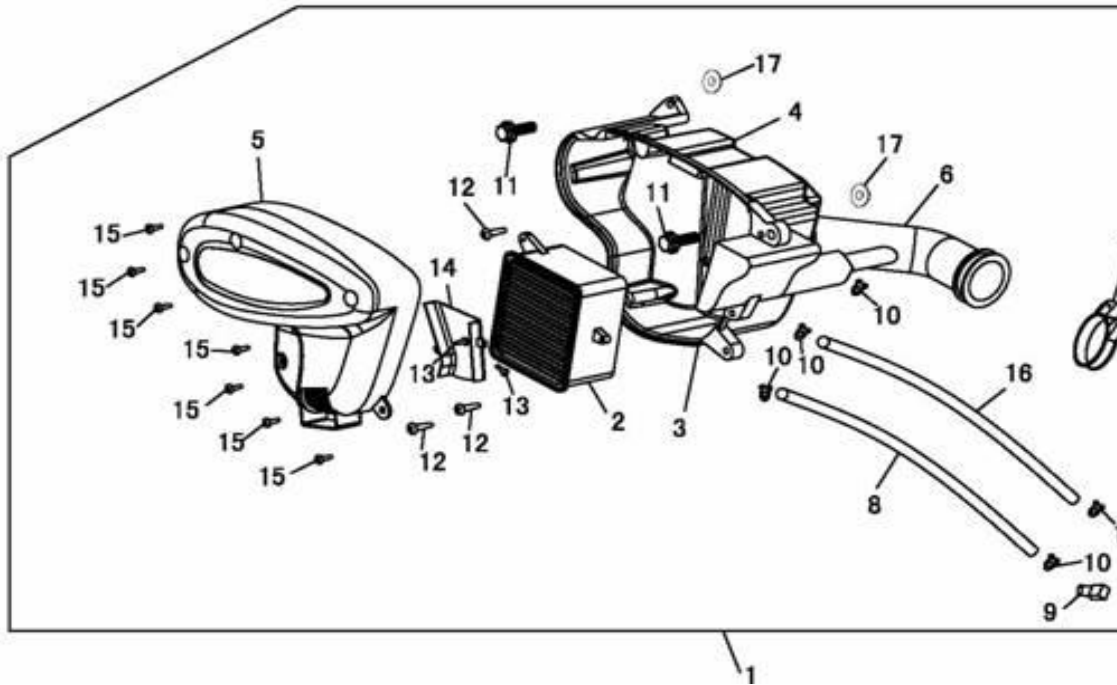
F-12 Body Cover Luggage Box

REF.NO.	PART NO.	DESCRIPTION	Q.T.Y	
1	F1201	SIDEBOARD, LH HR	1	
2	F1202	SCREW ST 3.9X13	6	
3	F1203	CLIP	2	
4	F1204	COVER, LH SIDEBOARD VENTILATION	1	
5	F1205	SCREW ST4.8X16	4	
6	F1206	SAFEBAR REAR LH HR	1	
7	F1207	BOLT M6X12	2	
8	F1208	CARGO BOX ASSY	1	
9	F1209	CARGO BOX	1	
10	F1210	SCREW M6X20	2	
11	F1211	NUT M6	2	
12	F1212	BOLT M6X12	2	
13	F1213	SCREW ST3.9X13	4	
14	F1214	CENTER SAFEBAR HR	1	
15	F1215	BRACKET	1	
16	F1216	BOLT M8X45	2	
17	F1217	BOLT M8X40	1	
18	F1218	COVER, VENTILATION	1	



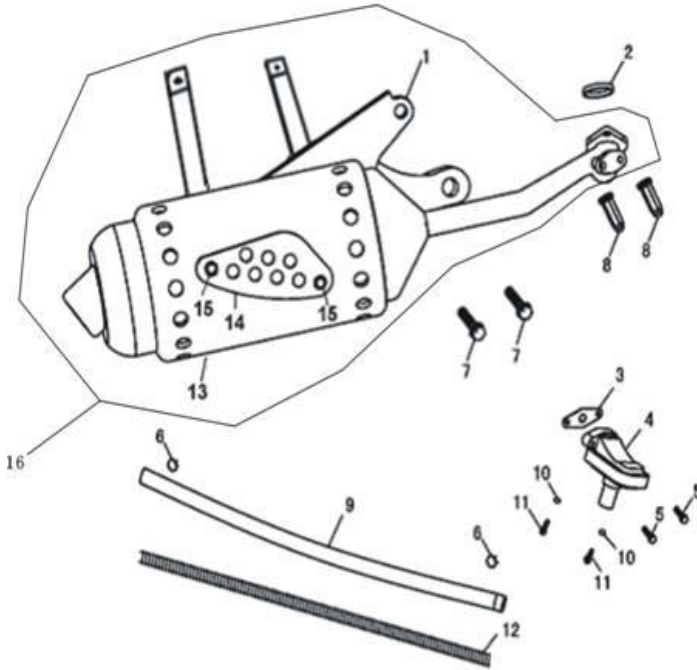
F-12 Body Cover:Luggage Box

REF.NO.	PART NO.	DESCRIPTION	Q.T.Y	
19	F1219	SIDEBOARD, RH HR	1	
20	F1220	SAFE BAR, RH HR	1	
21	F1221	SCREW ST3.9X13	2	
22	F1222	NUT M6	1	
23	F1223	COVER, GOODS BOX FR	1	
24	F1224	NUT M6X16	1	
25	F1225	WASHER	1	
26	F1226	HOOK	1	
27	F1227	NUT M6	1	
28	F1228	SCREW ST4.8X13	1	
29	F1229	WINDOW, CYLINDER HEAD	1	
30	F1230	CLIP	1	
31	F1231	INNER COVER,GOODS BOX	1	



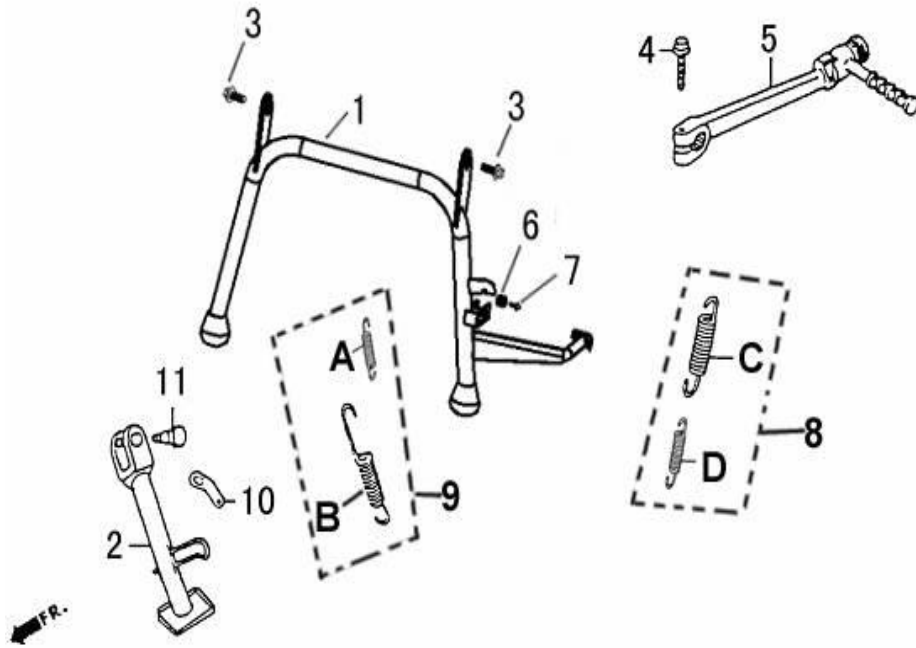
F-13 AIR CLEANER

REF.NO.	PART NO.	DESCRIPTION	Q.T.Y	
1	F1301	AIR CLEANER ASSY.	10	
2	F1302	CORE, AIR CLEANER	1	
3	F1303	CELL, FUEL	1	
4	F1304	SHELL, AIR CLEANER	1	
5	F1305	COVER, AIR CLEANER	1	
6	F1306	PIPE, OUTLET	1	
7	F1307	HOOP	1	
8	F1308	OIL PIPE	1	
9	F1309	PLUG, PIPE	1	
10	F1310	RING	5	
11	F1311	BOLT M6X35	2	
12	F1312	SCREW ST4.5X19	3	
13	F1313	SCREW ST3.9X13	2	
14	F1314	TUBE , VENTILATION	1	
15	F1315	SCREW ST4.8X16	7	
16	F1316	VENT-PIPE	1	
17	F1317	NUT M6	2	



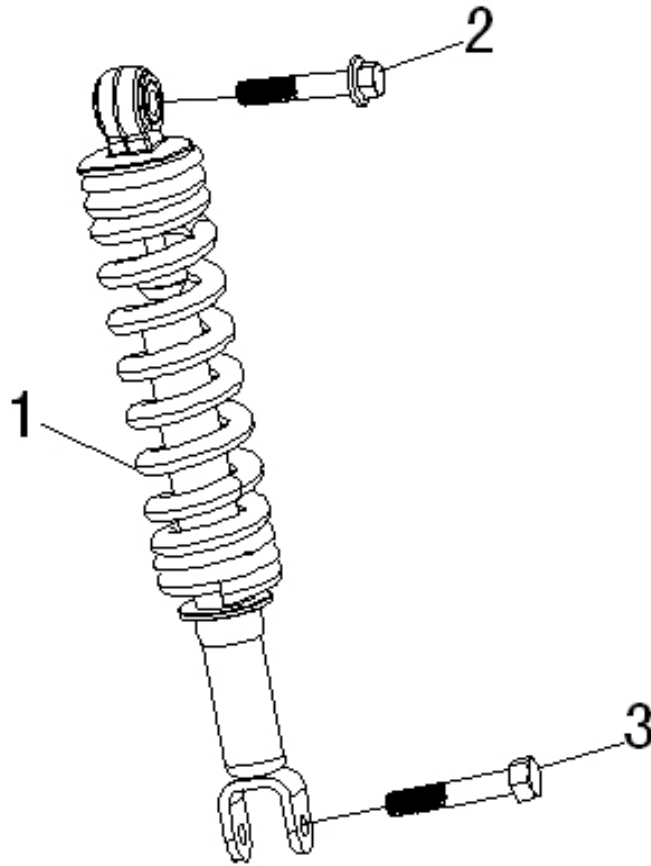
F-14 Exhaust Muffler

REF.NO.	PART NO.	DESCRIPTION	Q.T.Y	
1	F1401	WELDING ASSY, MUFFLER	1	
2	F1402	WASHER, SPONGE	1	
3	F1403	WASHER, 2ND AIR SUPPLY VALVE	1	
4	F1404	2ND AIR SUPPLY VALVE	1	
5	F1405	BOLT M6X12	2	
6	F1406	CLIP	2	
7	F1407	BOLT M8X35	2	
8	F1408	NUT M6	2	
9	F1409	2ND AIR SUPPLY VALVE	1	
10	F1410	WASHER	2	
11	F1411	BOLT M6X20	2	
12	F1412	SPRING,ADORN	1	
13	F1413	COVER, ADORN INNER	1	
14	F1414	COVER,ADORN OUTER	1	
15	F1415	BOLT M6X12	2	
16	F1416	EXHAUST ASSY.	1	



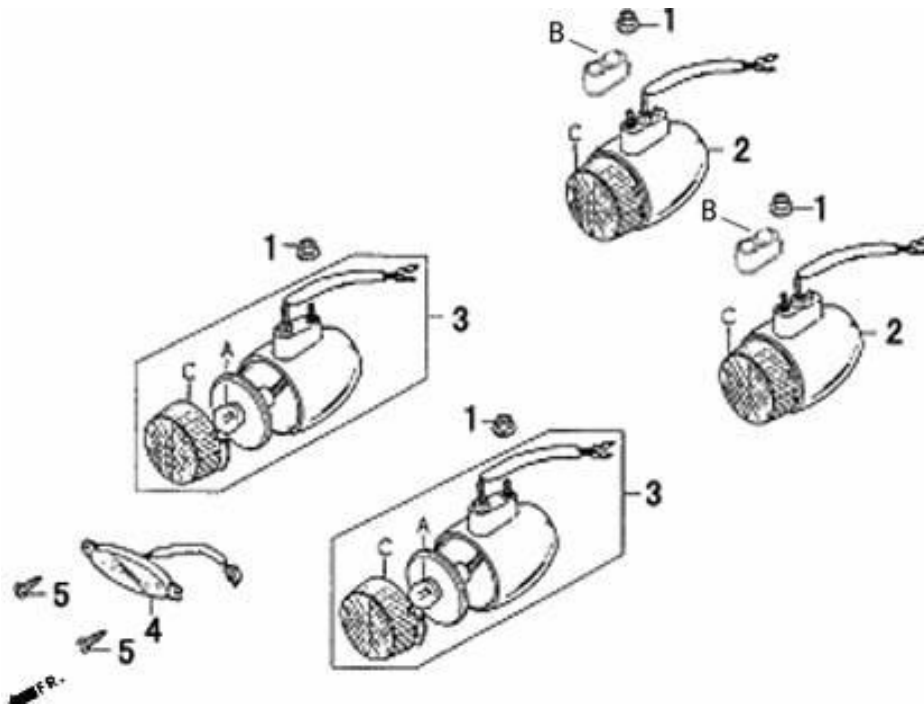
F-15 Kick Start Arm Stand

REF.NO.	PART NO.	DESCRIPTION	Q.T.Y	
1	F1501	MAIN STAND	1	
2	F1502	SINGLE STAND	1	
3	F1503	BOLT M10X30	2	
4	F1504	BOLT M6X25	1	
5	F1505	LEVER, START	1	
6	F1506	AMORTIZE BLOCK	1	
7	F1507	BOLT M6X25	1	
8	F1508	DOUBLE SPRING ,MAIN STAND	1	
9	F1509	DOUBLE SPRING ,SINGLE STAND	1	
10	F1510	SPRING JOINT,SINGLE STAND	1	
11	F1511	AXEL, SINGLE STAND	1	
A	F15A	SPRING, SINGLE STAND INNER	1	
B	F15B	SPRING, SINGLE STAND OUTER	1	
C	F15C	SPRING, MAIN STAND OUTER	1	
D	F15D	SPRING, MAIN STAND INNER	1	



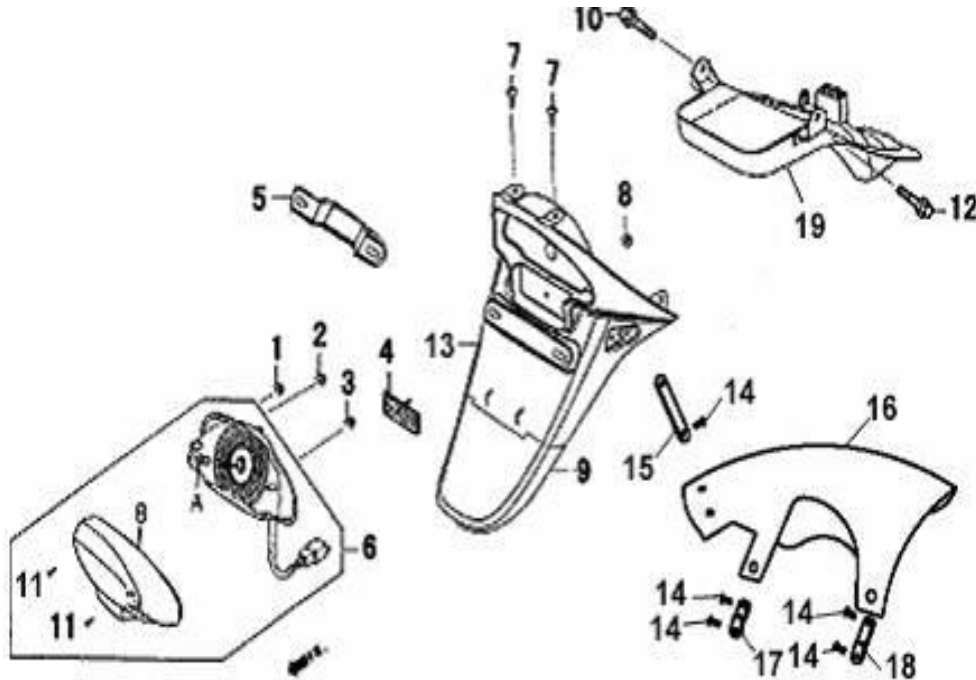
F-16 Rear Cushion absorber

REF.NO.	PART NO.	DESCRIPTION	Q.T.Y	
1	F1601	ASSY, ABSORBER REAR	10	
2	F1602	BOLT	1	
3	F1603	BOLT	1	



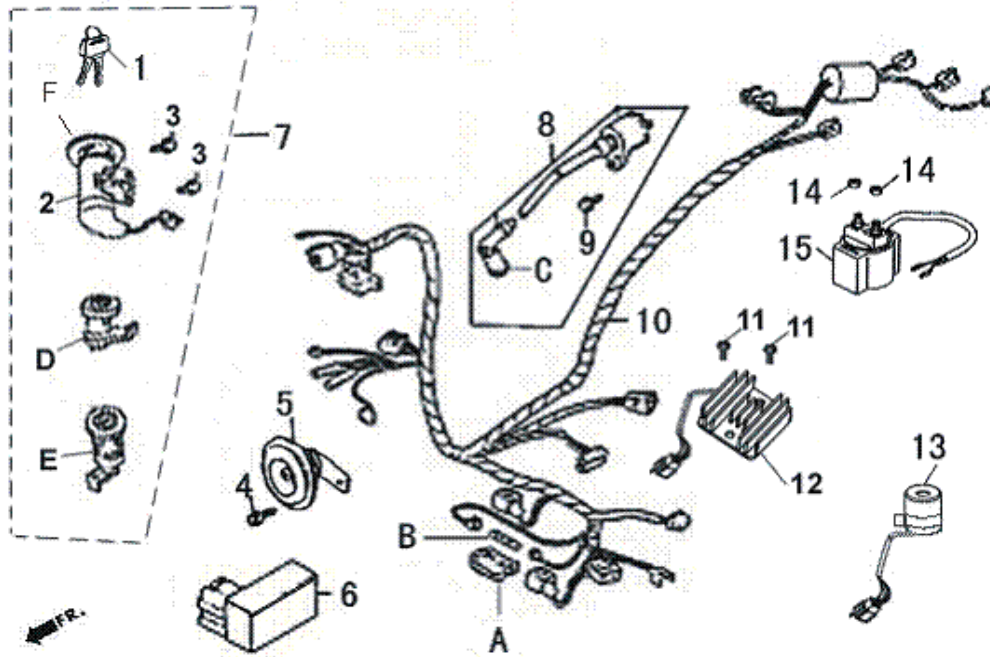
F-17 Signal Light

REF.NO.	PART NO.	DESCRIPTION	Q.T.Y	
A	F17A	BULB 12V-10W	4	
B	F17B	WASHER, TURN LAMP REAR	2	
C	F17C	WINKER, LAMP	4	
1	F1701	NUT M5	4	
2	F1702	TURNINGLAMP LH&RH REAR	2	
3	F1703	TURNINGLAMP LH&RH FR	2	
4	F1704	MIST-DEFENSIVE LAMP	1	
5	F1705	SCREW ST3.9X13	2	



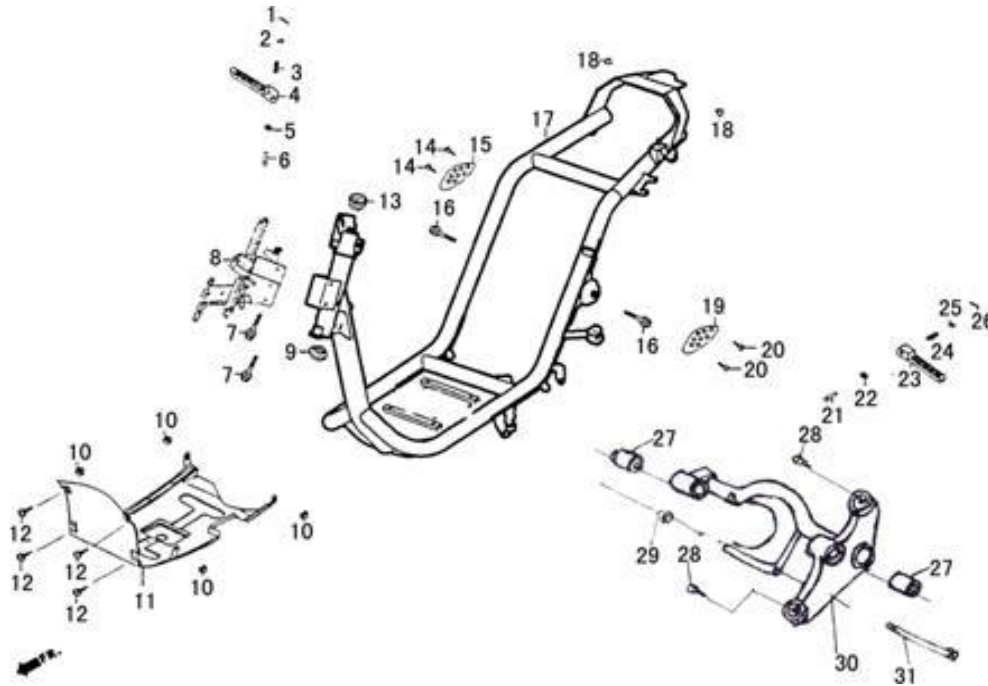
F-18 REAR FENDER

REF.NO.	PART NO.	DESCRIPTION	Q.T.Y	
A	F18A	BULB, TAIL LAMP	1	
B	F18B	WINKER, TAIL LAMP	10	
1	F1801	NUT M5	1	
2	F1802	NUT M5	1	
3	F1803	NUT M5	1	
4	F1804	REFLECTOR, RR	10	
5	F1805	BRACKET, LICENSE	1	
6	F1806	ASSY, TAIL LAMP	1	
7	F1807	SCREW M6X12	2	
8	F1808	NUT M5	1	
9	F1809	LOWER PART, FENDER	1	
10	F1810	BOLT M6X16	1	
11	F1811	SCREW ST4.2X12	2	
12	F1812	BOLT M6X16	1	
13	F1813	UPPER PART, FENDER	1	
14	F1814	NUT M6	5	
15	F1815	FIXED BRACKET	1	
16	F1816	SMALL FENDER	20	
17	F1817	FIXED BRACKET	1	
18	F1818	FIXED BRACKET	1	
19	F1819	SPLINT , FUEL TANK	1	



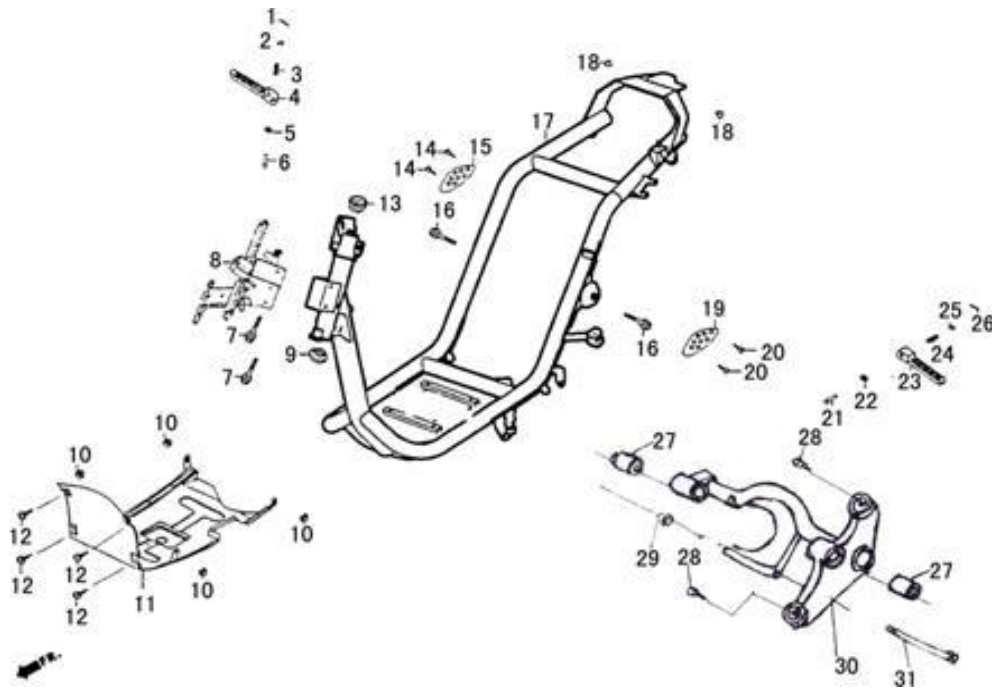
F-19 Wire Harness

REF.NO.	PART NO.	DESCRIPTION	Q.T.Y	
A	F19A	BOX, FUSE	1	
B	F19B	FUSE	2	
C	F19C	CAP, HIGH VOLTAGE	1	
D	F19D	LOCK, CUSHION	1	
E	F19E	LOCK, BOX FR	1	
F	F19F	COVER, KEY	1	
1	F1901	KEY	1	
2	F1902	SWITCH , IGNITION	1	
3	F1903	BOLT M6X16	2	
4	F1904	BOLT M6X12	1	
5	F1905	HORN	1	
6	F1906	IGNITION	10	
7	F1907	LOCK SET	10	
8	F1908	COIL ASSY. IGNITION	1	
9	F1909	BOLT M6X20	1	
10	F1910	CABLE ASSY.	1	
11	F1911	BOLT M6X 16	2	
12	F1912	RECTIFIER	1	
13	F1913	FLASHER	1	
14	F1914	NUT	2	
15	F1915	RELAY	1	



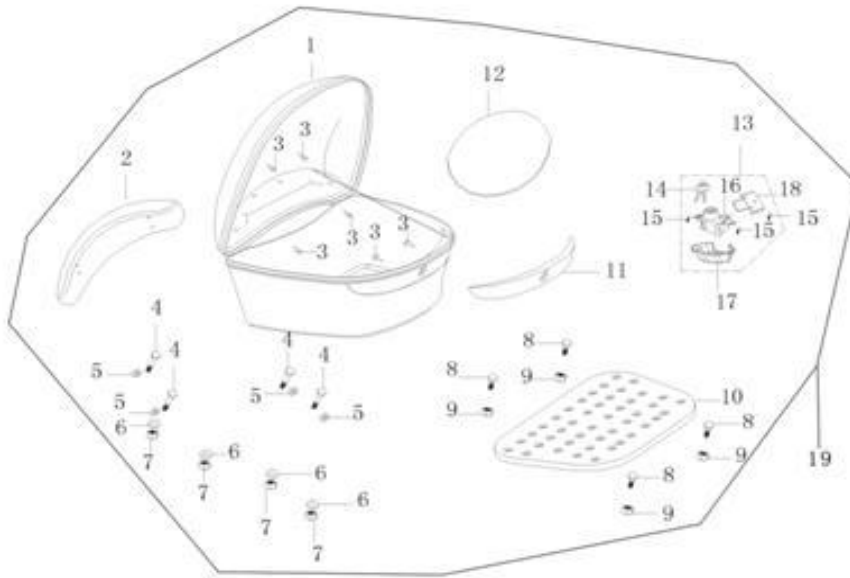
F-20 Frame Body

REF.NO.	PART NO.	DESCRIPTION	Q.T.Y	
1	F2001	UNCORK PIN	1	
2	F2002	STEELBALL ϕ 6.35	1	
3	F2003	SPRING	1	
4	F2004	PEDAL, RH	1	
5	F2005	PLAIN WASHER	1	
6	F2006	PIN	1	
7	F2007	BOLT M6X50	2	
8	F2008	BRACKET, FR	1	
9	F2009	STEELBALL LOWER	1	
10	F2010	NUT M6	4	
11	F2011	FENDER,	1	
12	F2012	NUT ST 3.9X12	4	
13	F2013	STEEL-SOCKET, UPPER	1	
14	F2014	BOLT M6X12	1	
15	F2015	ADORN BOARD, RH	1	
16	F2016	BOLT M10X1.25X55	2	
17	F2017	FRAME	1	
18	F2018	NUT M6	2	
19	F2019	ADORN BOARD, LH	1	
20	F2020	BOLT M6X12	1	
21	F2021	PIN	1	
22	F2022	PLAIN WASHER	1	
23	F2023	PEDAL LH	1	



F-20 Frame Body

REF.NO.	PART NO.	DESCRIPTION	Q.T.Y	
24	F2024	SPRING	1	
25	F2025	STEELBALL ϕ 6.35	1	
26	F2026	UNCORK PIN 1.6X20	1	
27	F2027	BUSH	40	
28	F2028	WASHER	2	
29	F2029	NUT M10	1	
30	F2030	SWING ,ENGINE	6	
31	F2031	SWING AXEL	1	



F-21 REAR CARRIER

REF.NO.	PART NO.	DESCRIPTION	Q.T.Y	
1	F2101	LUGGAGE BOX HONDA RED	10	
	F2101	LUGGAGE BOX SUZUKI RED	10	
	F2101	LUGGAGE BOX BLACK	10	
2	F2102	BACKREST	1	
3	F2103	BOLT ST4.8×19	6	
4	F2104	SCREW M8X35	4	
5	F2105	GASKET	4	
6	F2106	WASHER 8	4	
7	F2107	NUT M8	4	
8	F2108	SCREW M8X24	4	
9	F2109	NUT M8	4	
10	F2110	FASTEN BOARD	1	
11	F2111	REFLECTOR	1	
12	F2112	TOOLBOX WASHER	1	
13	F2113	LOCK ASSY, BOX	1	
14	F2114	KEY	2	
15	F2115	BOLT M6X20	3	
16	F2116	LOCK BODY	1	
17	F2117	COVER, LOCK	1	
18	F2118	HOOK	1	
19	F2119	LUGGAGE BOX ASSY.	1	



F-22 Mark

REF.NO.	PART NO.	DESCRIPTION	Q.T.Y	
1	F2201		1	
2	F2202		1	
3	F2203		1	
4	F2204		1	
5	F2205		1	
6	F2206		2	





