

# PARTS CATALOGUE

JL150-5 MOTORCYCLE

CIXI KINGRING MOTORCYCLE CO.,LTD.

## INDEX

E-1 Cylinder Head Cover.....	1
------------------------------	---

E-2	Cylinder Comp .....	2
E-3	Clutch Cover Comp .....	3
E-4	Crankcase Comp .....	4
E-5	Magneto Cover Assy .....	6
E-6	Crank·Connecting Rod·Piston.....	7
E-7	Camshaft·Valve .....	8
E-8	Carburetor .....	9
E-9	Oil Pump·Oil Filter.....	11
E-10	Clutch.....	12
E-11	Transmission.....	13
E-12	Gearshaft.....	15
E-13	Magneto.....	16
E-14	Electricity starting assembly.....	17
F-1	FRONT ARM SUSPENSION .....	18
F-2	FRONT WHEEL .....	19
F-3	REAR WHEEL .....	20
F-4	FRAME.....	21
F-5	FUEL TANK .....	22
F-6	CARBURETOR·AIR CLEANER·MUFFLER.....	23
F-7	FRONT BRAKE .....	24
F-8	BRAKE PEDAL·FOOTREST.....	25
F-9	COVER.....	26
F-10	HANDLE BAR .....	28
F-11	REAR ARM SUSPENSION .....	29
F-12	REAR GOODS BOX.....	30

F-13 SEAT.....	31
F-14 POWER WIRE .....	32
F-15 IGNITION SYSTEM .....	33
F-16 LIGHTING·LIGHT·SIGNALLING.....	34
F-17 SPEEDOMETER .....	35

Address: Kingring Development Zone, Cixi City, Zhejiang, P.R.China

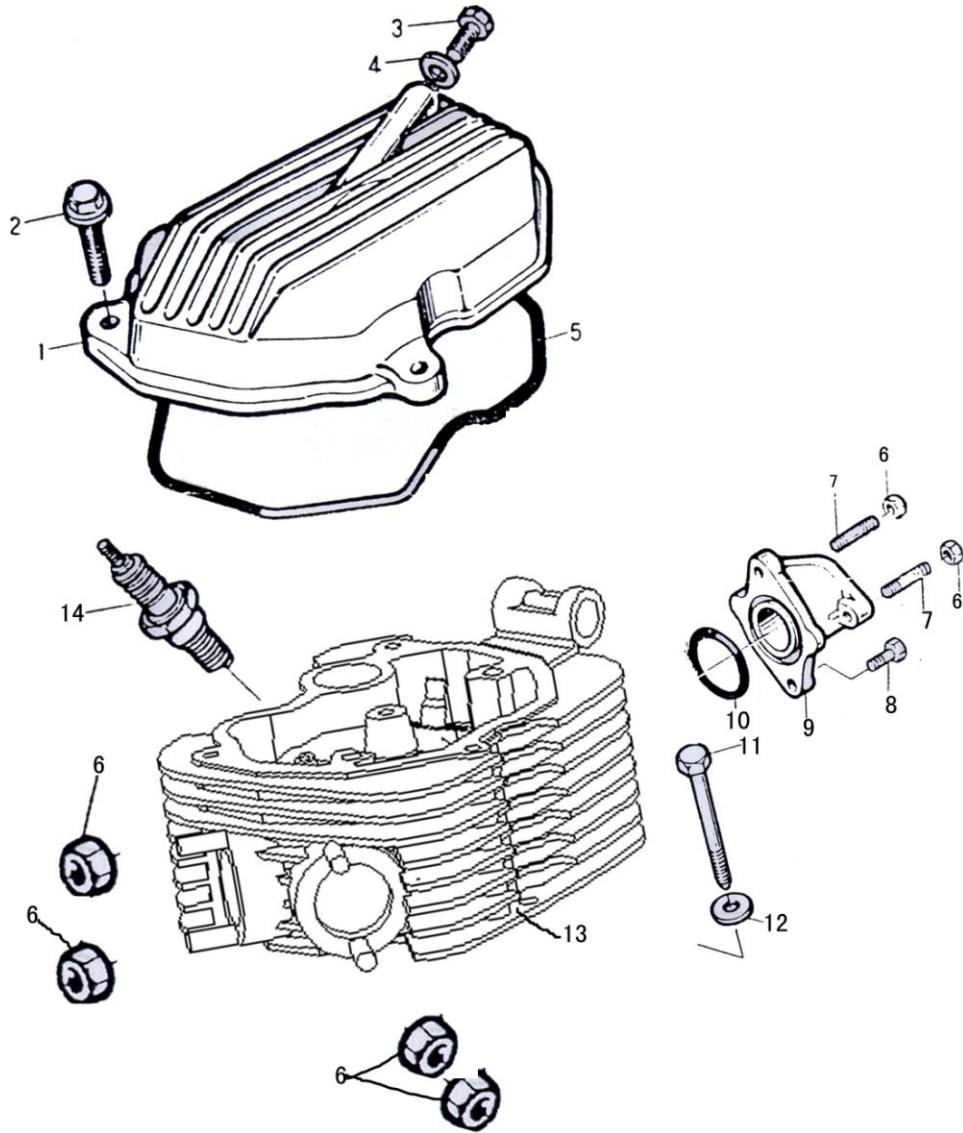
Tel: 86-574-63218692

Fax: 86-574-63218193

Code: 315301

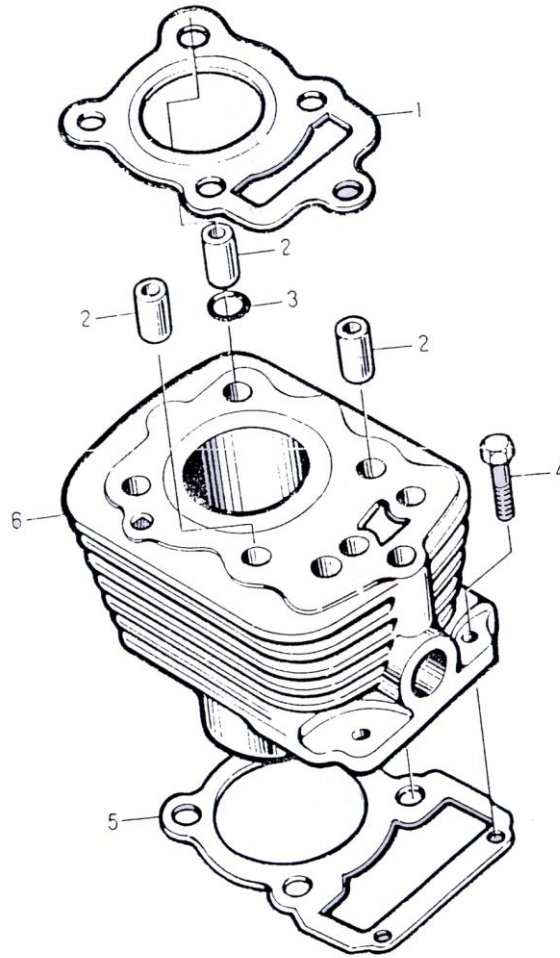
Http: [www.kingringmotor.com](http://www.kingringmotor.com)

Email: [motor@kingring.com](mailto:motor@kingring.com)



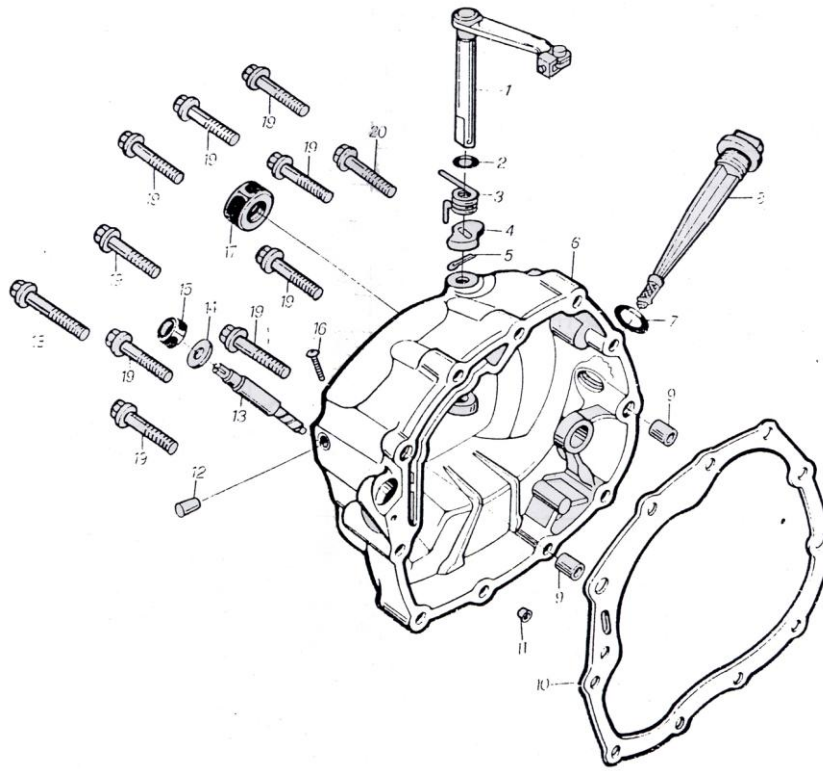
E-1 Cylinder Head Cover

REF. NO.	PART NO.	DESCRIPTION	Q.T.Y
1	E0101	Cover cylinder head	1
202	E0102	Bolt M6×28	3
3	E0103	Bolt M6	1
4	E0104	Washer (Cu)	1
5	E0105	Gasket,cylinder head	1
6	E0106	Nut M6	4
7	E0107	Stud bolt M6×28	2
8	E0108	Bolt M6×20	2
9	E0109	Pipe in take	1
10	E0110	O-ring 33.5×3	1
11	E0111	Bolt M8×79	1
12	E0112	Gasket 8	1
13	E0113	Cylinder head	10
14	E0114	Spark plug (D8EA)	1



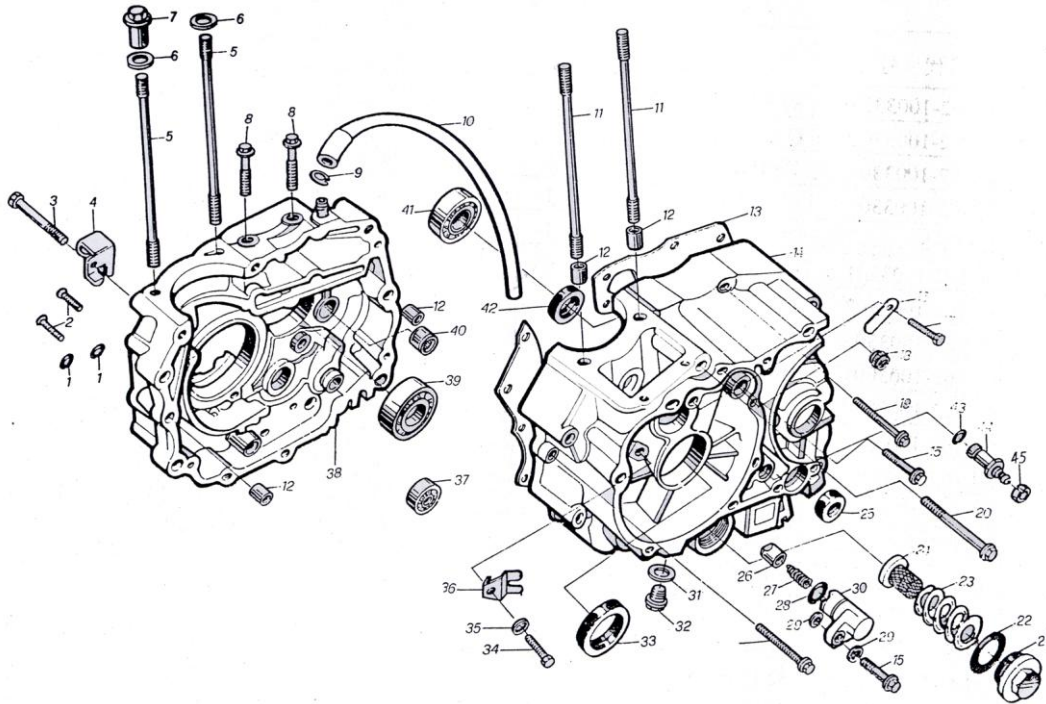
### E-2 Cylinder Comp

REF. NO.	PART NO.	DESCRIPTION	Q.T.Y
1	E0201	Gasket,cylinder head	20
2	E0202	Pin 10×20	3
3	E0203	O-ring 10×1.6	1
4	E0204	Bolt M6×22	2
5	E0205	Gasket Cylinder	20
6	E0206	Cylinder Comp	1



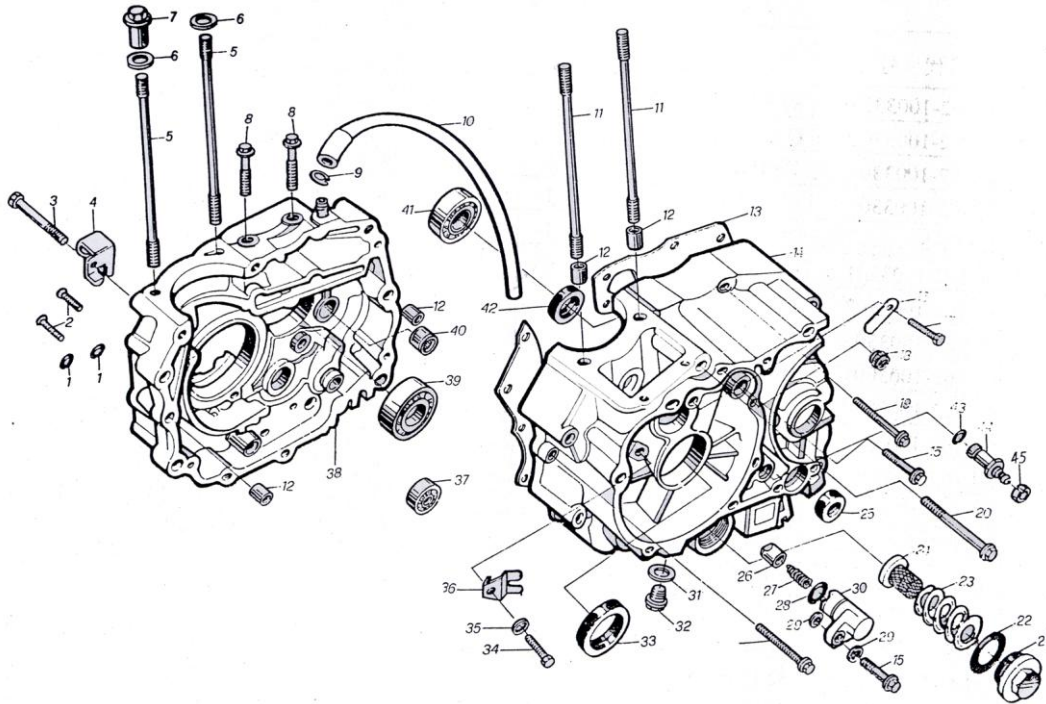
### E-3 Clutch Cover Comp

REF. NO.	PART NO.	DESCRIPTION	Q.T.Y
1	E0301	Control Lever Clutch	1
2	E0302	O-Ring6.8X1.9	1
3	E0303	Spring	1
4	E0304	Cam Clutch Release	1
5	E0305	Cotter pin 2X16	1
6	E0306	Cover Clutch	1
7	E0307	O-Ring 18X3	1
8	E0308	Lever Oil	1
9	E0309	Pin 8X14	2
10	E0310	Gasket Clutch Cover	10
11	E0311	Fitting Oil	1
12	E0312	Bevel Plunger	1
13	E0313	Gear Tachometer	1
14	E0314	Washer Tachometer Gear	1
15	E0315	Oil Seal SD6.5X14.5X7	1
16	E0316	Screw M5X25	1
17	E0317	Oil Seal 16X28X7	10
18	E0318	Bolt M6X50	1
19	E0319	Bolt M6X40	9
20	E0320	Bolt M6X36	1



### E-4 Crankcase Comp

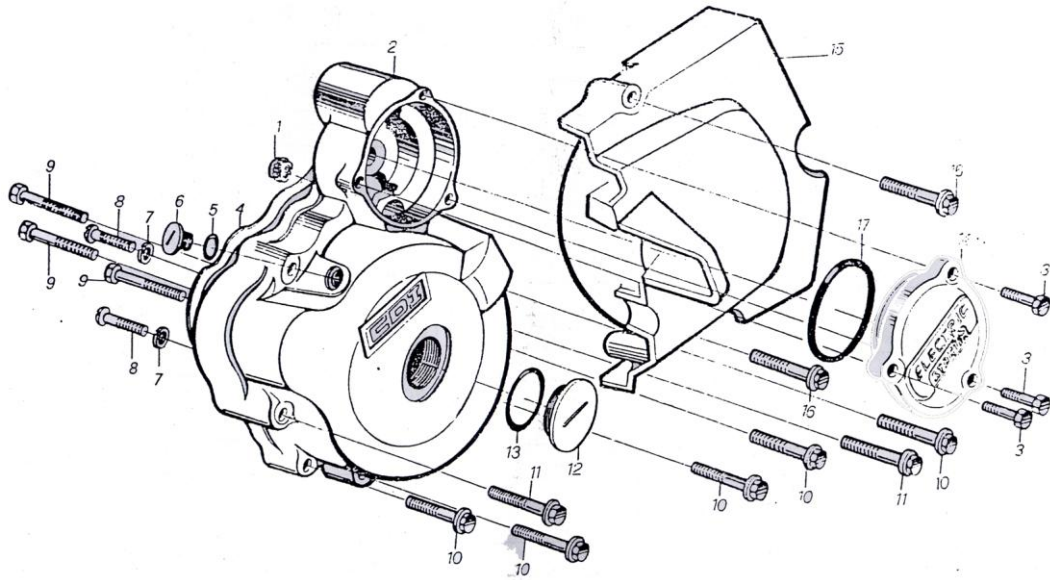
REF. NO.	PART NO.	DESCRIPTION	Q.T.Y
1	E0401	O-Ring 9.4X2.4	2
2	E0402	Screw M6X30	2
3	E0403	Bolt M6X55	1
4	E0404	Bracket Clutch Cable	1
5	E0405	Stud Bolt M8X122	10
6	E0406	Washer 12	2
7	E0407	Nut Cylinder Head	4
8	E0408	Bolt M6X28	2
9	E0409	Clamp	1
10	E0410	Hose	1
11	E0411	Stud Bolt M8X130	10
12	E0412	Pin 10X14	4
13	E0413	Gasket Crankcase	20
14	E0414	Crankcase set LH	1
15	E0415	Bolt M6X25	2
16	E0416	Plate Spring	1
17	E0417	Bolt M6X12	1
18	E0418	Bearing HK1010	1
19	E0419	Bolt M6X50	9
20	E0420	Bolt M6X95	1
21	E0421	Cover Oil Filter	1
22	E0422	O-Ring 35X3	1
23	E0423	Spring Oil Filter	1



### E-4 Crankcase Comp

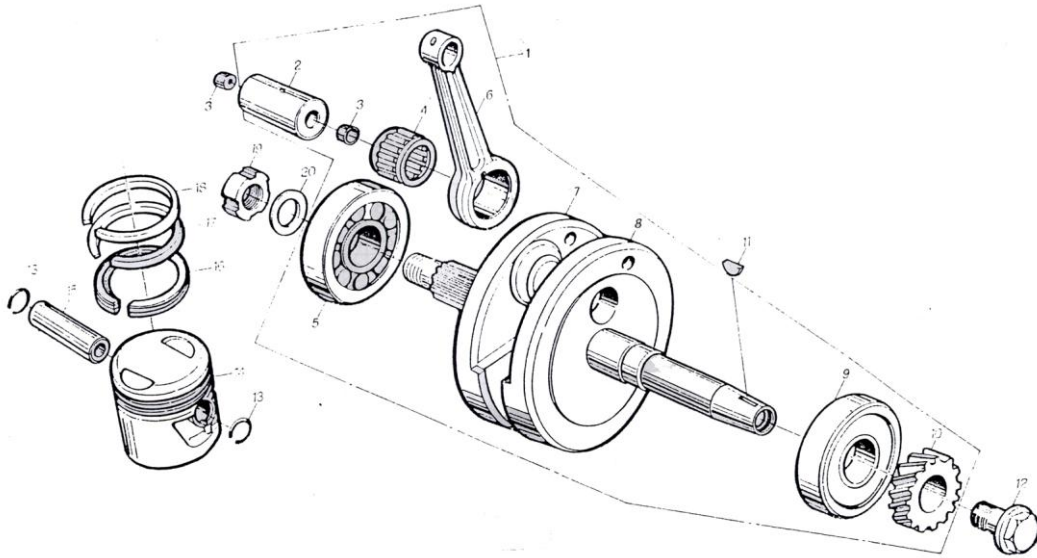
REF. NO.	PART NO.	DESCRIPTION	Q.T.Y
24	E0424	Oil Filter	1
25	E0425	Oil Seal 14X28X7	20
26	E0426	Pin	1
27	E0427	Spring	1
28	E0428	O-Ring 13X2.5	1
29	E0429	Seal Washer 6	2
30	E0430	Bracket bearing plug	1
31	E0431	Oil Seal 34X50X7	20
32	E0432	Bolt M6X16	1
33	E0433	Washer 6	1
34	E0434	Bolt M6X12	1
35	E0435	Washer	1
36	E0436	Bracket Cable	1
37	E0437	Bearing E106	1
38	E0438	Grankcase set RH	1
39	E0439	Bearing E106	1
40	E0440	Bearing RK152112	1
41	E0441	Bearing E204	1
42	E0442	Oil Seal PD 20X34X7	20
43	E0443	O-Ring 7X1.7	1
44	E0444	Switch neutral indicator	1
45	E0445	Plate neutral switch setting	1





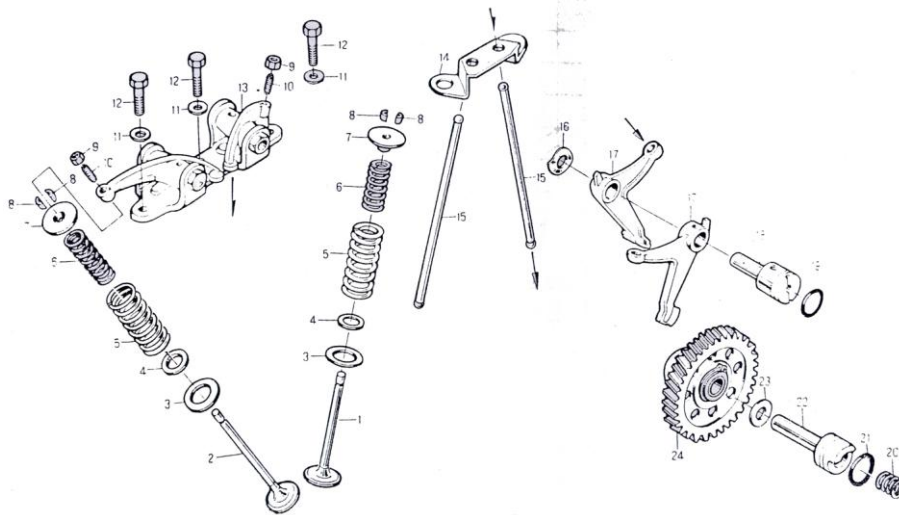
E-5 Magneto Cover Assy

REF. NO.	PART NO.	DESCRIPTION	Q.T.Y
1	E0501	Bearing HK1010	1
2	E0502	Cover magneto	3
3	E0503	Bolt M6×20	3
4	E0504	Gasket magneto	1
5	E0505	O-ring 13.8×2.5	1
6	E0506	Nut M14	1
7	E0507	Washer	2
8	E0508	Screw M5×16	2
9	E0509	Screw M5×25	3
10	E0510	Bolt M6×40	5
11	E0511	Bolt M6×50	2
12	E0512	M30 plug	1
13	E0513	O-ring 27.4×2.4	20
14	E0514	Cap, rear	5
15	E0515	Case, sporcket	5
16	E0516	Bolt M6×30	2
17	E0517	O-ring 63×3	20



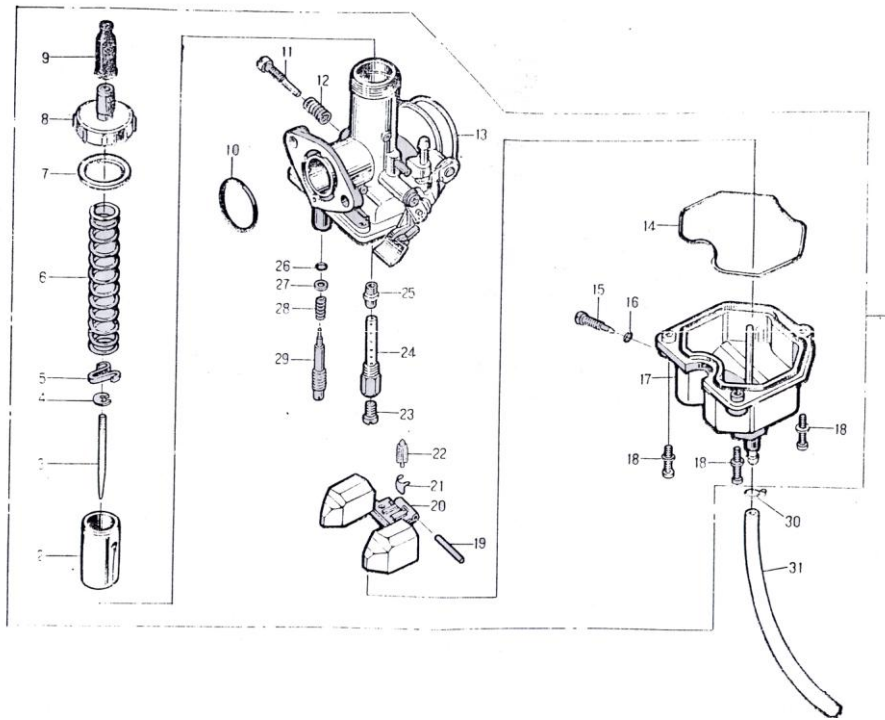
### E-6 Crank·Connecting Rod·Piston

REF. NO.	PART NO.	DESCRIPTION	Q.T.Y
1	E0601	Crank-connecting rod assy	10
2	E0602	Pin-crank	1
3	E0603	Plug,crank pin	2
4	E0604	Bearing,connecting rod	1
5	E0605	Bearing 63/28/P5	1
6	E0606	Connecting rod	1
7	E0607	Crankshaft RH	1
8	E0608	Crankshaft LH	1
9	E0609	Bearing 63/28RS/P5	1
10	E0610	Gear,timing driver	1
11	E0611	Key,woodruff	1
12	E0612	Bolt	1
13	E0613	Circlip	20
14	E0614	Piston	20
15	E0615	Pin,piston	20
16	E0616	Ring,piston	20
17	E0617	Ring(II),piston	20
18	E0618	Ring(I),piston	20
19	E0619	Nut	1
20	E0620	Washer	1



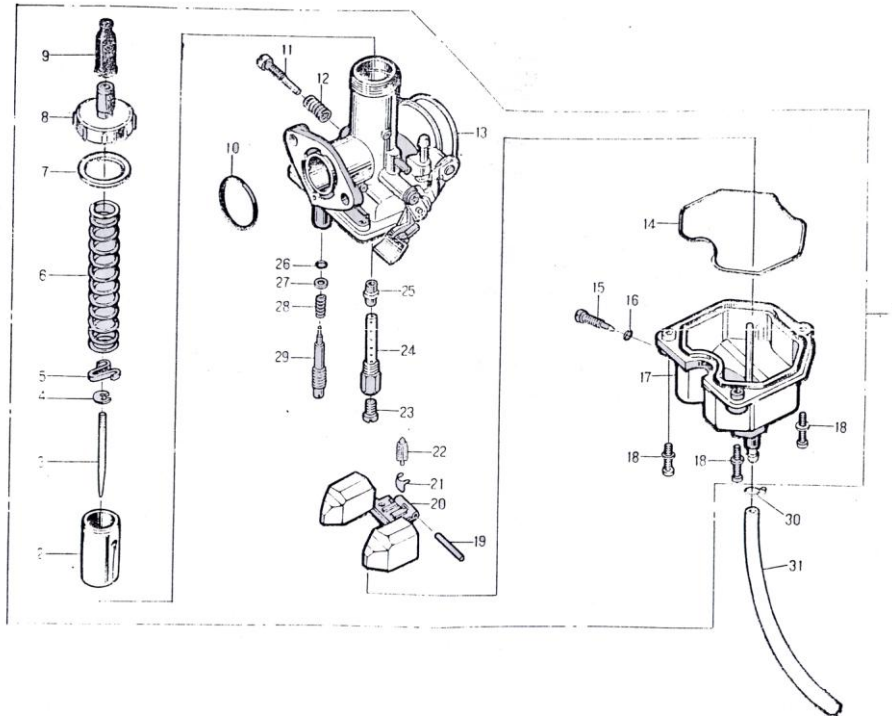
### E-7 Camshaft Valve

REF. NO.	PART NO.	DESCRIPTION	Q.T.Y
1	E0701	Valve intake	10
2	E0702	Valve exhaust	10
3	E0703	Seat valve spring outer	2
4	E0704	Seat valve spring inner	10
5	E0705	Spring valve outer	10
6	E0706	Spring valve inner	10
7	E0707	Seat valve spring upper	10
8	E0708	Cotter valve	20
9	E0709	Nut valve adjusting	2
10	E0710	Screw valve adjusting	2
11	E0711	Washer 8	3
12	E0712	Bolt M8×28	3
13	E0713	Holder comp arm	15
14	E0714	Holder rod push	10
15	E0715	Rod push comp	10
16	E0716	Wave washer	1
17	E0717	Arm,lower	10
18	E0718	Shaft,arm lower	1
19	E0719	O-ring 17×2.5	1
20	E0720	Spring	10
21	E0721	O-ring 20×2.5	10
22	E0722	Shaft,cam	5
23	E0723	Washer	1
24	E0724	Cam comp	5



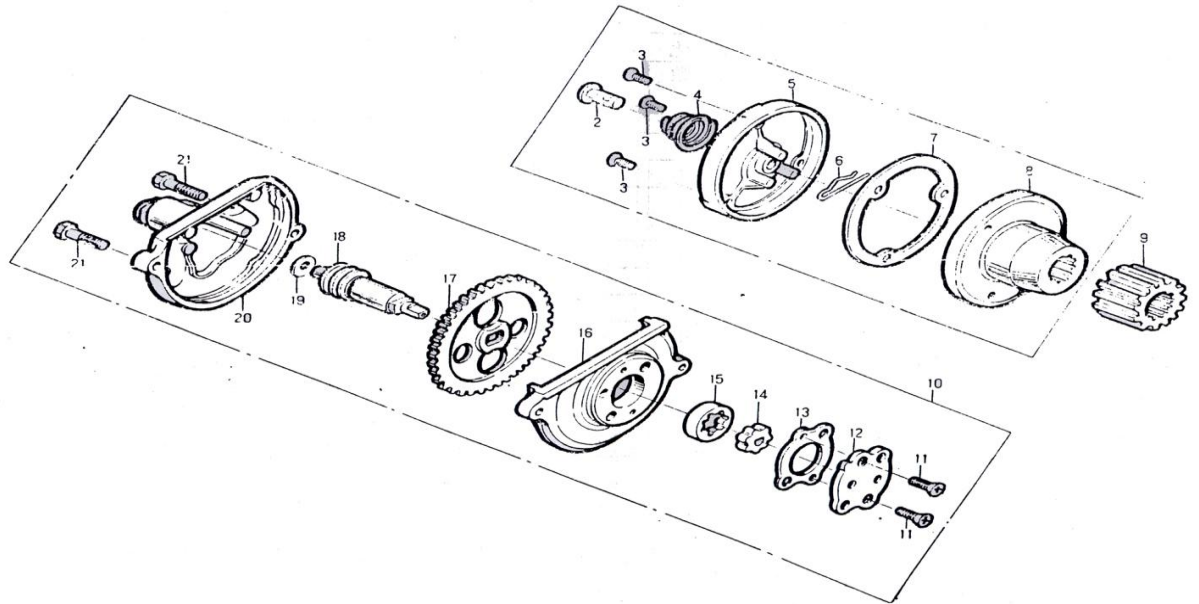
### E-8 Carburetor

REF. NO.	PART NO.	DESCRIPTION	Q.T.Y
1	E0801	Carburetor assy	10
2	E0802	Valve piston	1
3	E0803	Needle JET	1
4	E0804	Needle clip	1
5	E0805	Clip	1
6	E0806	Spring	1
7	E0807	Gasket	1
8	E0808	Cover upper	1
9	E0809	Grommet cable	1
10	E0810	Seal	1
11	E0811	Screw adjuster valve	1
12	E0812	Spring adjuster screw	1
13	E0813	Body carburetor	1
14	E0814	Coasket	1
15	E0815	Screw drain	1
16	E0816	Gasket drain	1
17	E0817	Body flont assy	1
18	E0818	Screw unit M4×16	3
19	E0819	Pin float	1
20	E0820	Float	1
21	E0821	Hook,needle	1
22	E0822	Needle,float	1
23	E0823	Main jet	1



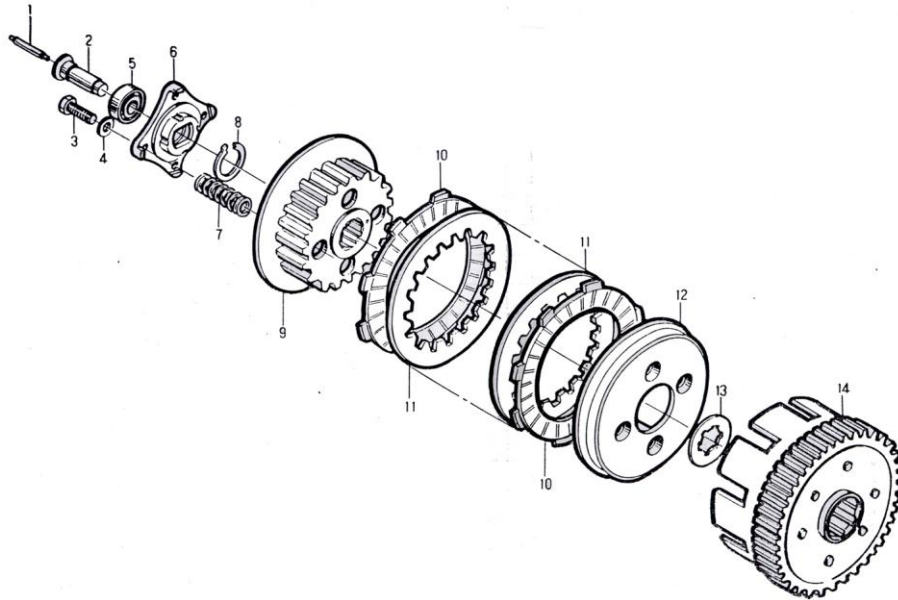
### E-8 Carburetor

REF. NO.	PART NO.	DESCRIPTION	Q.T.Y
24	E0824	Needle jet	1
25	E0825	Jet pilot	1
26	E0826	O-ring,adjusting idle	1
27	E0827	Washer,adjusting idle	1
28	E0828	Spring adjusting idle	1
29	E0829	Screw,idle	1
30	E0830	Clap	1
31	E0831	Hose	1



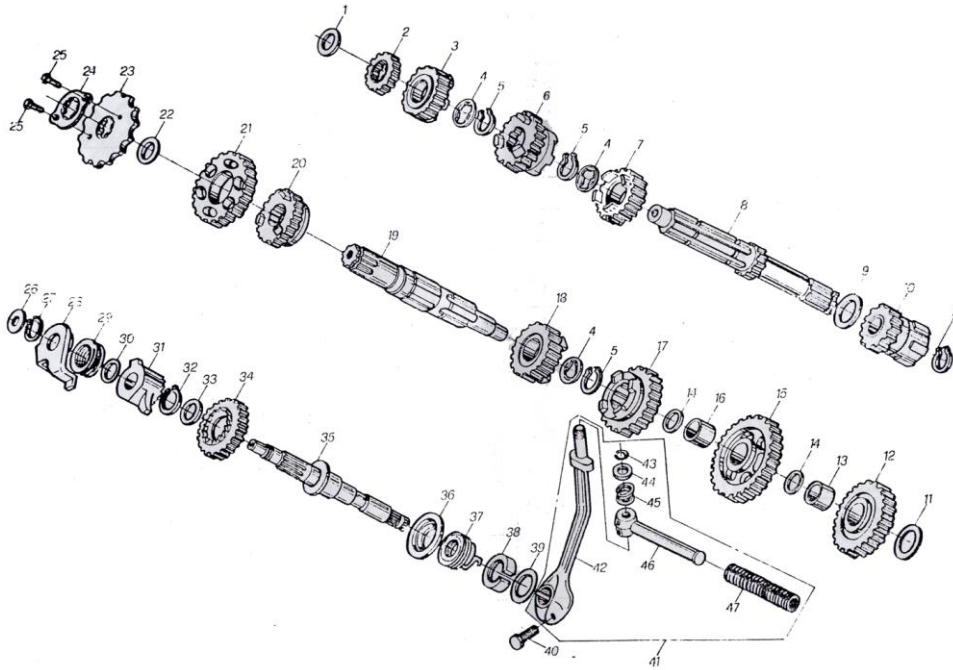
### E-9 Oil Pump·Oil Filter

REF. NO.	PART NO.	DESCRIPTION	Q.T.Y
1	E0901	Oil filter assy	10
2	E0902	Hose intake	1
3	E0903	Screw M5×12	3
4	E0904	Spring	1
5	E0905	Cover oil filter	1
6	E0906	Clip	1
7	E0907	Gasket	1
8	E0908	Rotor comp,oil filter	1
9	E0909	Gear pump drive first	5
10	E0910	Oil pump assy	10
11	E0911	Screw M4×12	2
12	E0912	Cover oil pump	1
13	E0913	Gasket	1
14	E0914	Rotor inner	1
15	E0915	Rotor outer	1
16	E0916	Body oil pump	1
17	E0917	Gear pump drive	1
18	E0918	Gear drive tachometer	1
19	E0919	Washer	1
20	E0920	Cover oil pump gear	1
21	E0921	Bolt M5×20	1



**E-10 Clutch compl. 10**

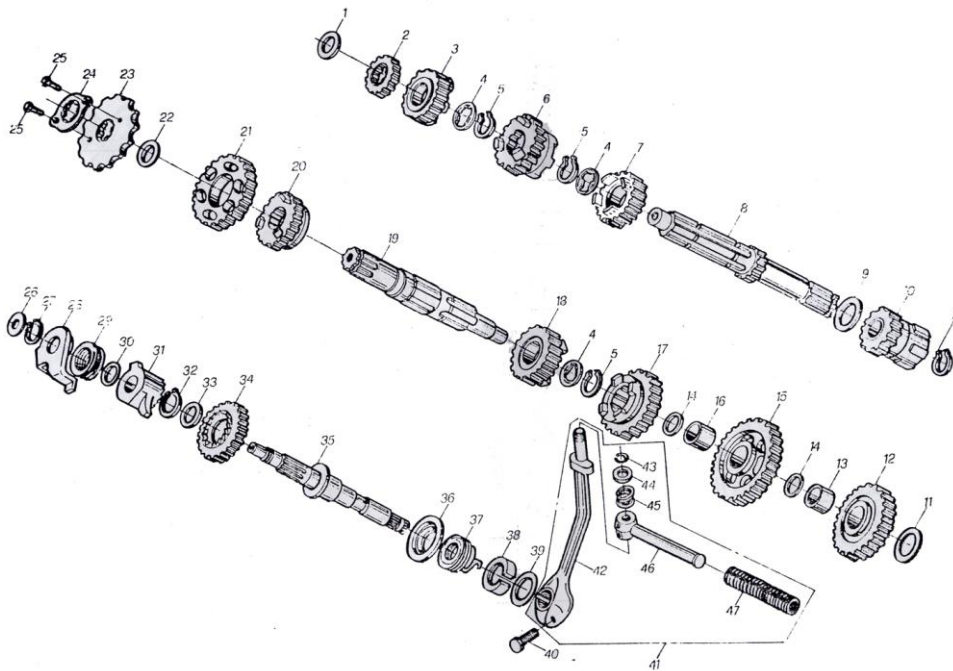
REF. NO.	PART NO.	DESCRIPTION	Q.T.Y
1	E1001	Rod push clutch	1
2	E1002	Spacer	1
3	E1003	Bolt M6×25	4
4	E1004	Flat washer 6	4
5	E1005	Bearing 101	1
6	E1006	Plate clutch lifter	1
7	E1007	Spring clutch	4
8	E1008	Circlip 20	1
9	E1009	Face clutch driven	1
10	E1010	Plate comp clutch drive	20
11	E1011	Plate comp clutch driven	20
12	E1012	Disk pressure	1
13	E1013	Spring clutch	1
14	E1014	Holder comp clutch drive	1



### E-11 Transmission

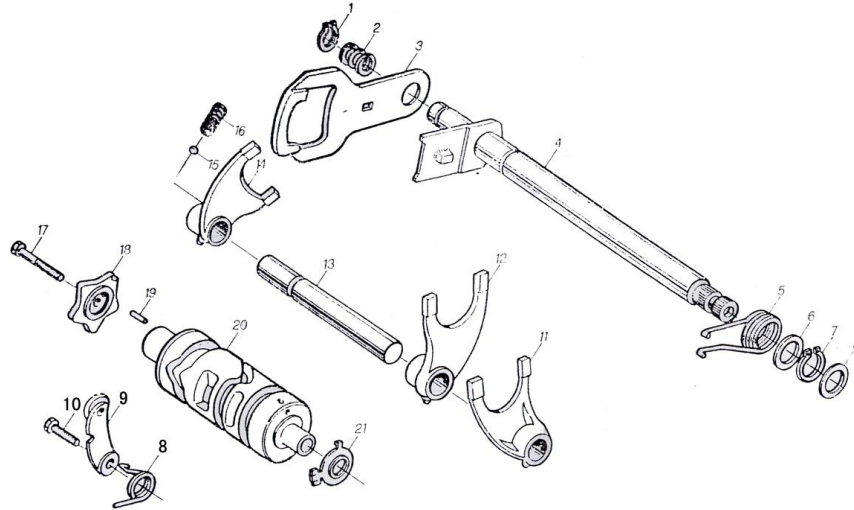
REF. NO.	PART NO.	DESCRIPTION	Q.T.Y
1	E1101	Washer 15	1
2	E1102	Gear 2nd drive	1
3	E1103	Gear 5 <sup>th</sup> drive	1
4	E1104	Washer	3
5	E1105	Circlip 20	4
6	E1106	Gear 4 <sup>th</sup> drive	1
7	E1107	Gear 3 <sup>rd</sup> drive	1
8	E1108	Drive shaft	1
9	E1109	Washer 20	1
10	E1110	Pinion assy staring	1
11	E1111	Washer 15	1
12	E1112	Gear staring idle	1
13	E1113	Bush	1
14	E1114	Washer 16.5	1
15	E1115	Gear 1 <sup>st</sup> driven	1
16	E1116	Bush	1
17	E1117	Gear 3 <sup>rd</sup> driven	1
18	E1118	Gear 4 <sup>th</sup> driven	1
19	E1119	Counter shaft	1
20	E1120	Gear 5 <sup>th</sup> driven	1
21	E1121	Gear 2 <sup>nd</sup> driven	1
22	E1122	Washer 20	1
23	E1123	Sprocket	10
24	E1124	Plate sprocket	1





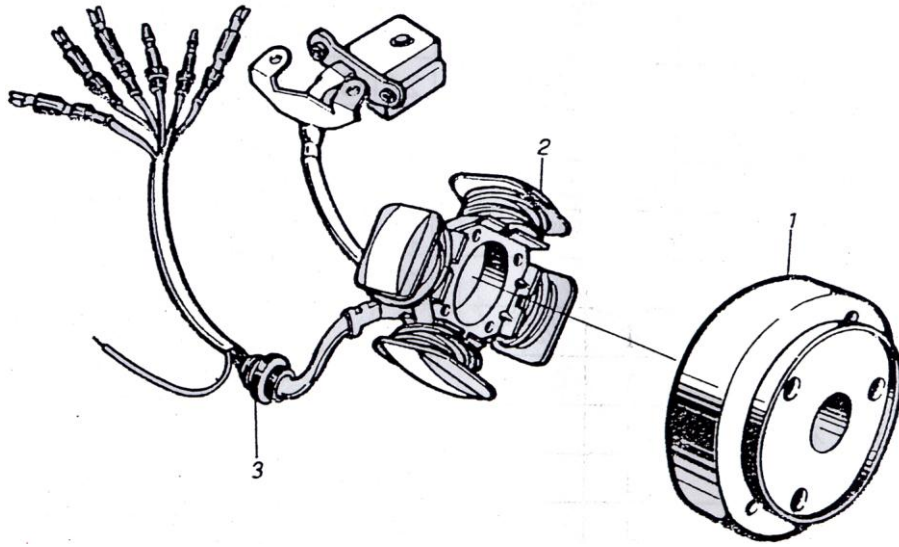
### E-11 Transmission

REF. NO.	PART NO.	DESCRIPTION	Q.T.Y
25	E1125	Bolt M6×10	2
26	E1126	Washer	1
27	E1127	Circlip 16	1
28	E1128	Plate kick ratchet guide	1
29	E1129	Spring	1
30	E1130	Washer 16	1
31	E1131	Claw clutch	1
32	E1132	Circlip 20	1
33	E1133	Washer 20	1
34	E1134	Gear starting	1
35	E1135	Shaft starting	1
36	E1136	Seating spring	1
37	E1137	Spring return	1
38	E1138	Spacer	1
39	E1139	Washer 16	1
40	E1140	Bolt M8×25	1
41	E1141	Lever assy, starting	1
42	E1142	Lever kick starter	1
43	E1143	Circlip	1
44	E1144	Washer	1
45	E1145	Spring	1
46	E1146	Foot set kick starting	1
47	E1147	Rubber starting lever	1



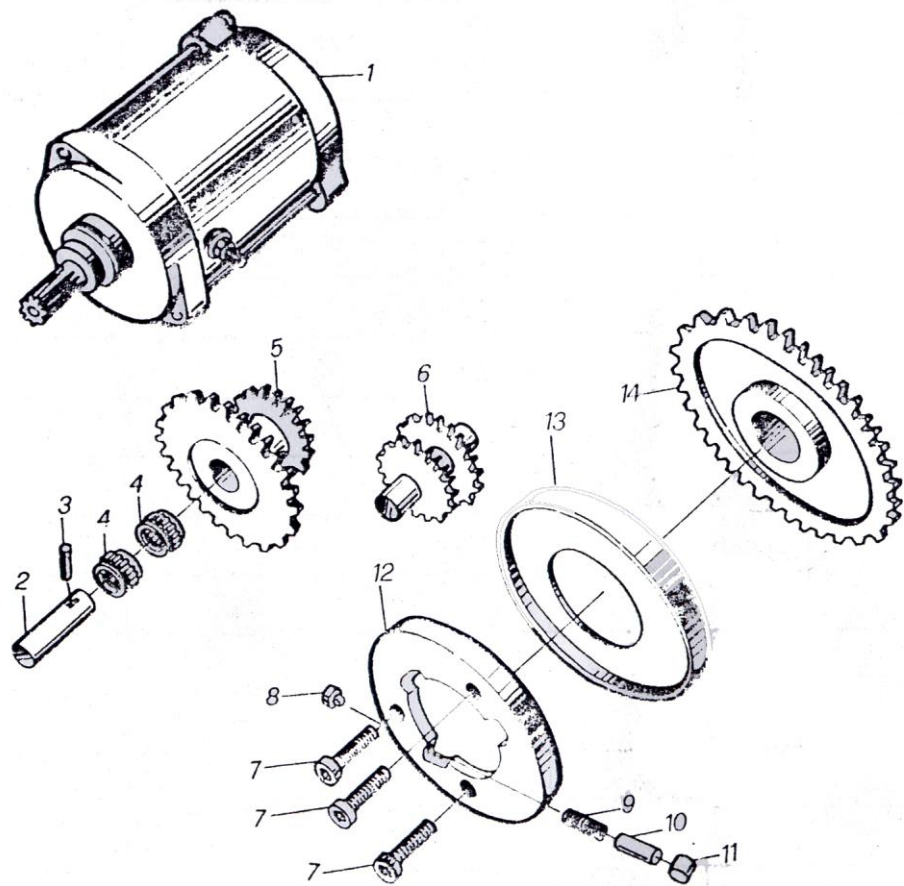
### E-12 Gearshaft

REF. NO.	PART NO.	DESCRIPTION	Q.T.Y
1	E1201	Circlip 12	1
2	E1202	Spring gear shift plate	1
3	E1203	Plate gear shift	1
4	E1204	Shaft gear shift	1
5	E1205	Return spring gear shift	1
6	E1206	Washer 14	2
7	E1207	Circlip 14	1
8	E1208	Spring shift drum stopper	1
9	E1209	Stopper comp,gearshift drum	1
10	E1210	Bolt M6×20	1
11	E1211	Fork gearskift RH	1
12	E1212	Fork gearshift MID	1
13	E1213	Shaft fork gear shift	1
14	E1214	Fork gearshift LH	1
15	E1215	Ball $\phi$ 3.5	1
16	E1216	Spring	1
17	E1217	Bolt M6×25	1
18	E1218	Cam gearshift	1
19	E1219	Pin 4×10	1
20	E1220	Drum ,gear shift	1
21	E1221	Rotor neutral switch	1



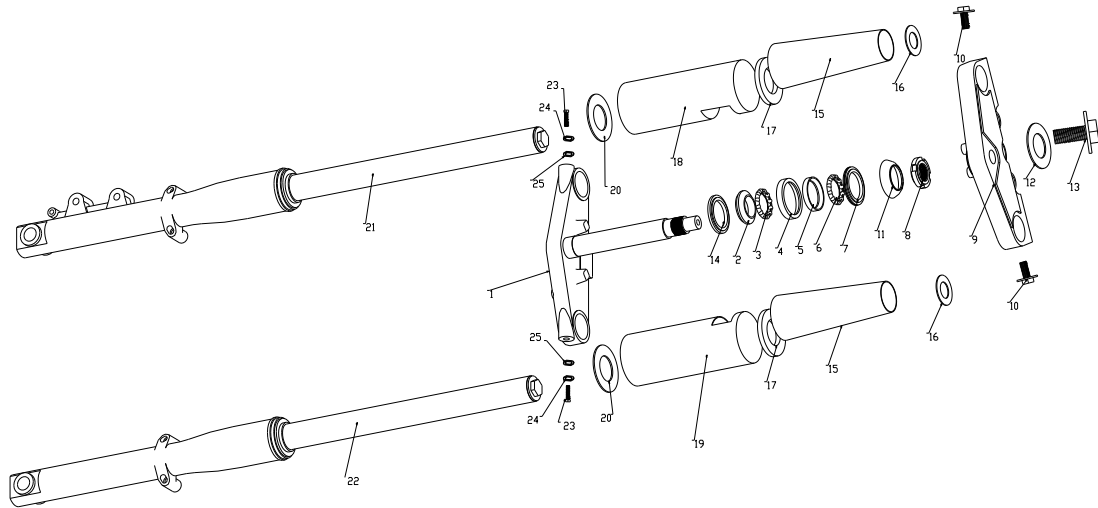
E-13 Magneto Comp

REF. NO.	PART NO.	DESCRIPTION	Q.T.Y
1	E1301	Rotor assy magneto	1
2	E1302	Base assy magneto	1
3	E1303	Ring wire harness	1



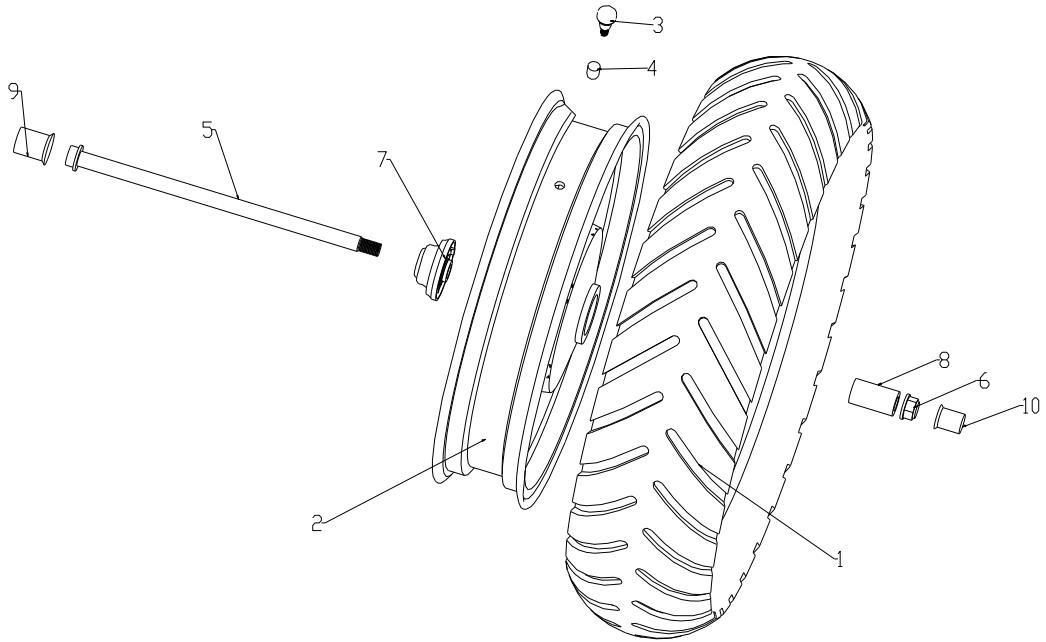
E-14 Electricity starting assembly

REF. NO.	PART NO.	DESCRIPTION	Q.T.Y
1	E1401	Motor starter	1
2	E1402	Shaft gear(I)	1
3	E1403	Pin	1
4	E1404	Bearing HK1010	2
5	E1405	Gear(1) driven	1
6	E1406	Gear(2) driven	1
7	E1407	Screw M8×16	1
8	E1408	Seating spring	10
9	E1409	Spring	10
10	E1410	Ring spring	10
11	E1411	Roller	10
12	E1412	Body starter clutch	10
13	E1413	Side cover starter clutch	10
14	E1414	Gear assy starter clutch	10



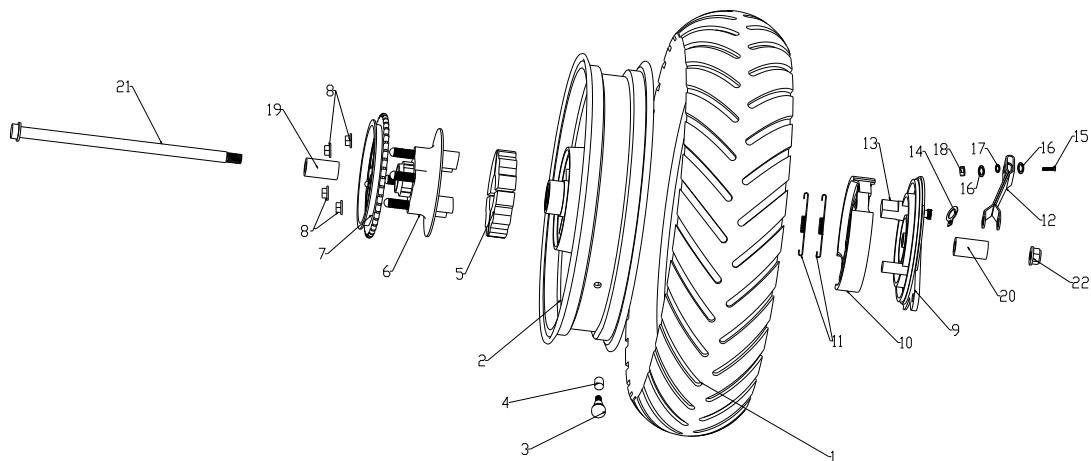
### F-1 FRONT ARM SUSPENSION

REF. NO.	PART NO.	DESCRIPTION	Q.T.Y
1	F0101	Steering Assy.	1
2	F0102	Rase, ball lower	1
3	F0103	Braket, ball lower	1
4	F0104	Rase, frame	1
5	F0105	Rase, frame	1
6	F0106	Bracket, ball upper	1
7	F0107	Rase, ball upper	20
8	F0108	Nut	1
9	F0109	Holder, suspension upper	1
10	F0110		2
11	F0111	Cover, protecting	1
12	F0112	Plain Washer 10	1
13	F0113		1
14	F0114	Washer, rubber	1
15	F0115	Tube,upper	2
16	F0116	Rubber, upper tube	2
17	F0117	Rubber, Lower tube	2
18	F0118	Tube, Lower LH	1
19	F0119	Tube,Lower RH	1
20	F0120	Rubber, tube	2
21	F0121	Front Absorber LH	1
22	F0122	Front Absorber RH	1
23	F0123		2
24	F0124	Spring Washer 8	2
25	F0125	Plain Washer 8	2



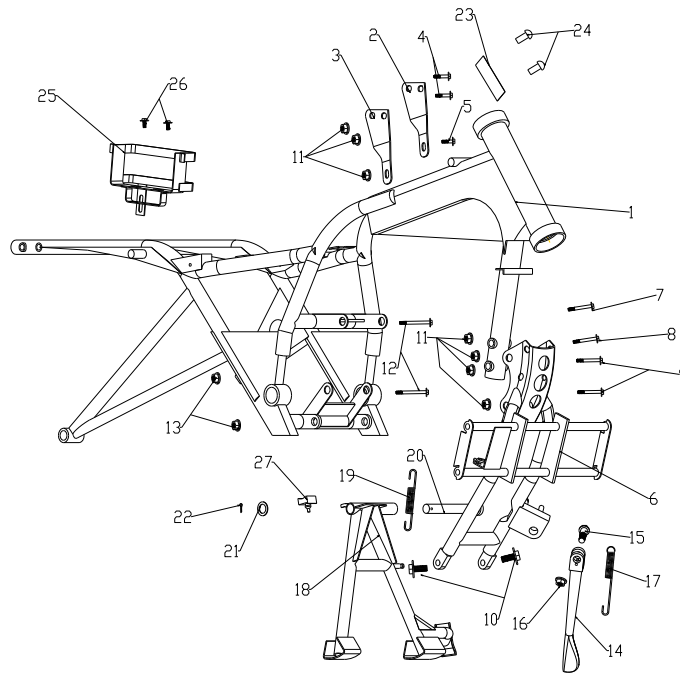
F-2 FRONT WHEEL

REF. NO.	PART NO.	DESCRIPTION	Q.T.Y
1	F0201	Tire Comp, front	1
2	F0202	Rim, front wheel	1
3	F0203	Valve, intake	1
4	F0204	Cap valve intake	1
5	F0205	Axle, front wheel	1
6	F0206		1
7	F0207	Box Assy, transmission	10
8	F0208	Spacer	1
9	F0209		1
10	F0210		1



### F-3 REAR WHEEL

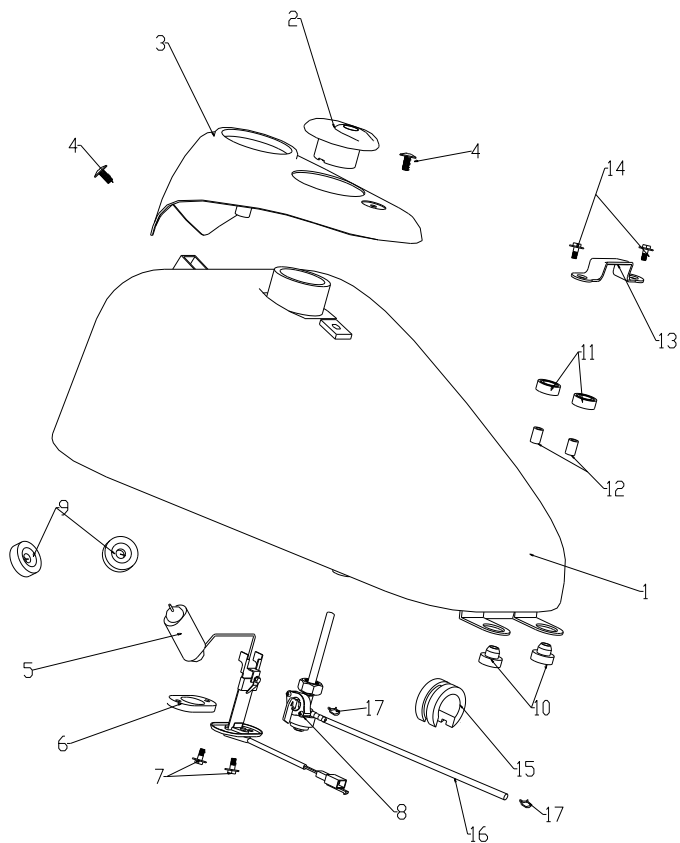
REF. NO.	PART NO.	DESCRIPTION	Q.T.Y
1	F0301	Tire, rear wheel	1
2	F0302	Rim, rear wheel	1
3	F0303	Valve, intake	1
4	F0304	Cap valve intake	1
5	F0305	Cushion, rear wheel	4
6	F0306	Guide chain	1
7	F0307	Sprocket, rear	10
8	F0308		4
9	F0309	Panel, rear brake	1
10	F0310	Shoe, rear brake	2
11	F0311	Spring, rear brake	2
12	F0312	Lever, brake cam	1
13	F0313	Cam, rear brake	1
14	F0314	Plate, timing chain	1
15	F0315		1
16	F0316	Plain Washer 6	2
17	F0317	Spring Washer 6	1
18	F0318	Nut M6	1
19	F0319	Spacer, rear axle L	1
20	F0320	Spacer, rear axle R	1
21	F0321	Axle, rear wheel	1
22	F0322		1



**F-4 FRAME**

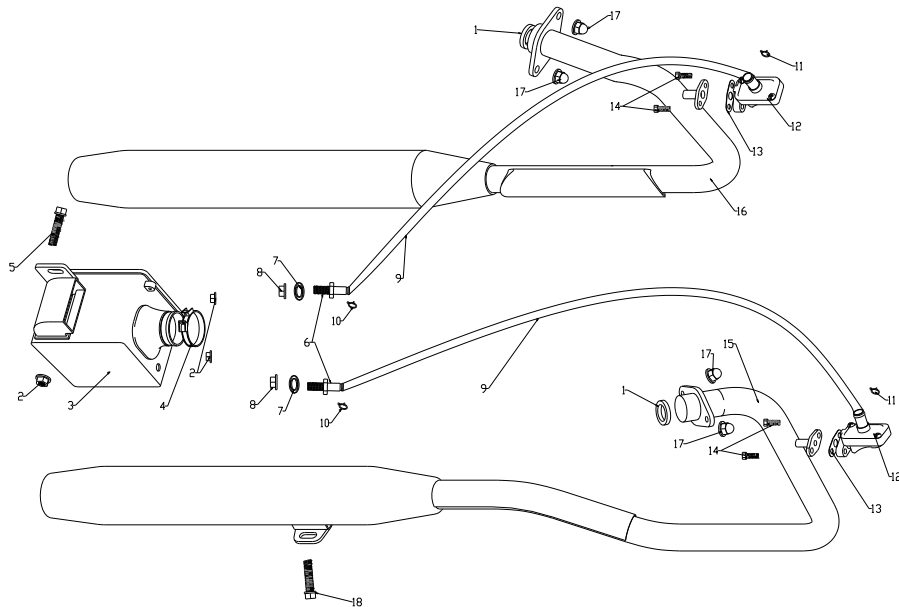
REF. NO.	PART NO.	DESCRIPTION	Q.T.Y
1	F0401	Frame	1
2	F0402	Plate, upper LH	1
3	F0403	Plate, upper RH	1
4	F0404		2
5	F0405		1
6	F0406	Braket, enging	1
7	F0407		1
8	F0408		1
9	F0409		2
10	F0410		2
11	F0411	Nut M8	7
12	F0412		2
13	F0413		2
14	F0414	Stand, prop	1
15	F0415	Screw	1
16	F0416		1
17	F0417	Spring	1
18	F0418	Center Stand	10
19	F0419	Spring	1
20	F0420	Shaft, stand	1
21	F0421	Plat Washer 16	1
22	F0422		1
23	F0423	Plate, name	1
24	F0424		2
25	F0425	Holder, battery	1
26	F0426		2
27	F0427	Cushion, center stand	1





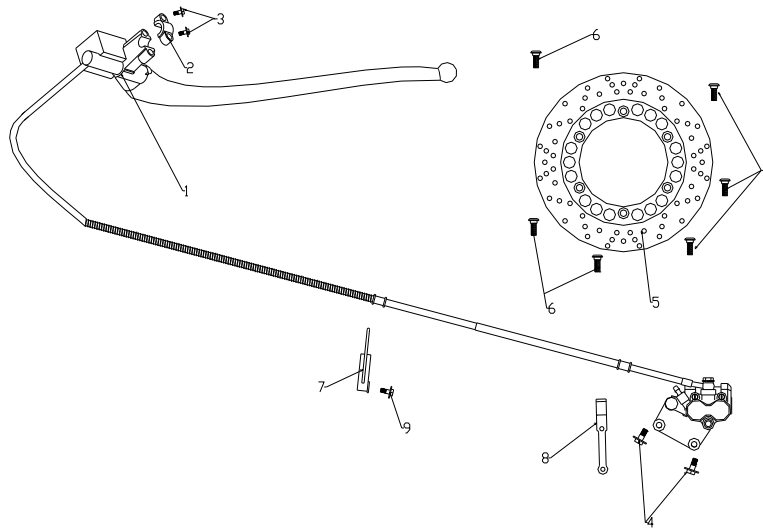
#### F-5 FUEL TANK

REF. NO.	PART NO.	DESCRIPTION	Q.T.Y
1-1	F0501-	Fuel Tank (SUZUKI RED)	5
1-2	F0501-	Fuel Tank (HONDA RED)	5
1-3	F0501-	Fuel Tank (BLACK GOLDEN)	5
1-4	F0501-	Fuel Tank (SUZUKI BLUE)	5
1-5	F0501-	Fuel Tank (SILVER BLUE)	5
2	F0502	Cap,fuel tank	1
3	F0503	Fuelometer Assy.	1
4	F0504	Screw M6×16	2
5	F0505	Fuel level sensor	20
6	F0506	Seal, Fuel unit	1
7	F0507	Bolt M6×16	2
8	F0508	Switch, fuel tank	10
9	F0509	Cushion	2
10	F0510	Cushion	2
11	F0511	Cushion	2
12	F0512	Spacer	2
13	F0513	Plate	1
14	F0514	Bolt M6×30	2
15	F0515	Cushion	1
16	F0516	Hose	1
17	F0517	Clip	2



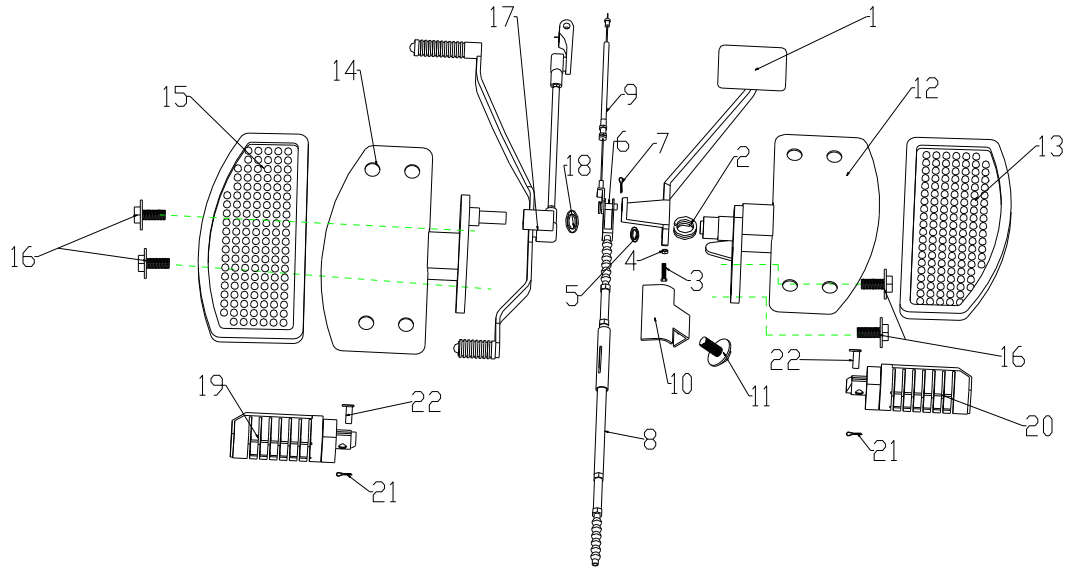
### F-6 CARBURETOR·AIR CLEANER·MUFFLER

REF. NO.	PART NO.	DESCRIPTION	Q.T.Y
1	F0601	Washer, seal	60
2	F0602	Nut M6	3
3	F0603	Air Cleaner	1
4	F0604	Clamp	1
5	F0605	Bolt M6×16	1
6	F0606	Bolt, second air in	2
7	F0607	Washer, seal	2
8	F0608		2
9	F0609	Rubber pipe, second air in	2
10	F0610		2
11	F0611		2
12	F0612	Valve, second air in	2
13	F0613	Gasket	2
14	F0614		4
15	F0615	Muffler LH	10
16	F0616	Muffler RH	10
17	F0617	Nut M6	60
18	F0618	Bolt M10×1.25×30	1



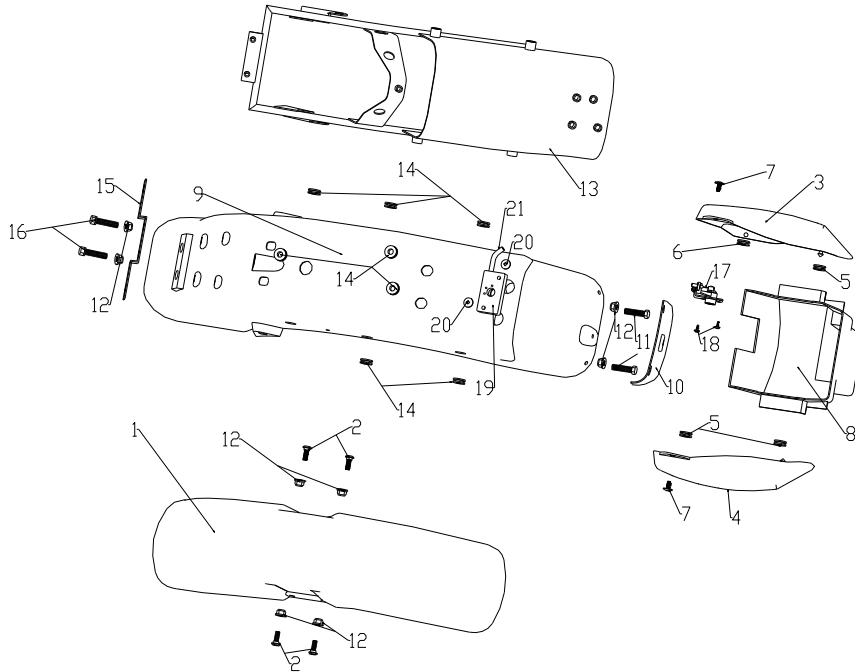
F-7 FRONT BRAKE

REF. NO.	PART NO.	DESCRIPTION	Q.T.Y
1	F0701	Disk Brake	1
2	F0702	Holder	1
3	F0703		2
4	F0704		2
5	F0705	Disk, brake	1
6	F0706	Screw	6
7	F0707	Clip, brake hose upper	1
8	F0708	Clip, brake hose lower	1
9	F0709		1



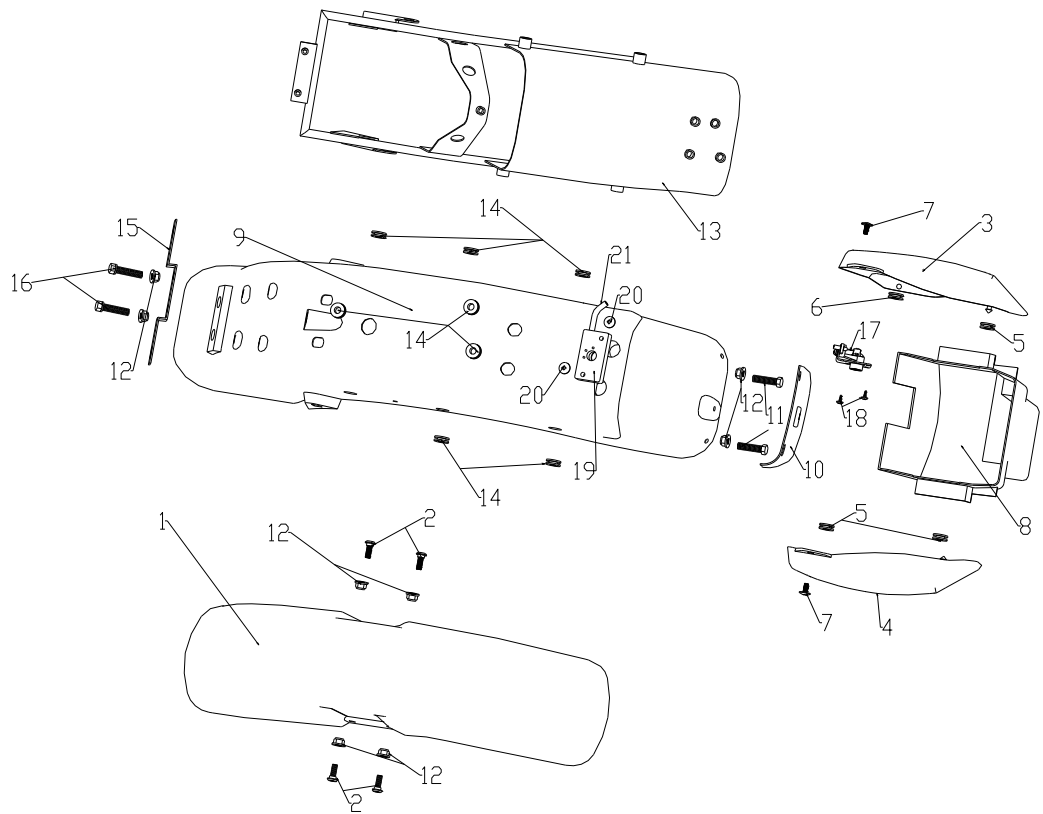
F-8 BRAKE PEDAL FOOTREST

REF. NO.	PART NO.	DESCRIPTION	Q.T.Y
1	F0801	Pedal, brake	1
2	F0802	Spring,pedal return	1
3	F0803	Nut M6	1
4	F0804	Nut M6	1
5	F0805	"E" Rings	1
6	F0806		1
7	F0807		1
8	F0808	Brake Control Caple, rear	1
9	F0809	Brake Switch Caple, rear	1
10	F0810	Protecting Jacket, brake	1
11	F0811	Bolt M6 X 12	1
12	F0812	Front Footrest, RH	1
13	F0813	Rubber, front footrest,RH	1
14	F0814	Front Footrest, LH	1
15	F0815	Rubber, front footrest,LH	1
16	F0816	Bolt M6 X 12	4
17	F0817	Gearshift Control Lever	1
18	F0818	"E" Rings	1
19	F0819	Rear Footrest, LH	1
20	F0820	Rear Footrest, RH	1
21	F0821	Bolt M6 X 12	2
22	F0822	Bolt M6 X 12	2



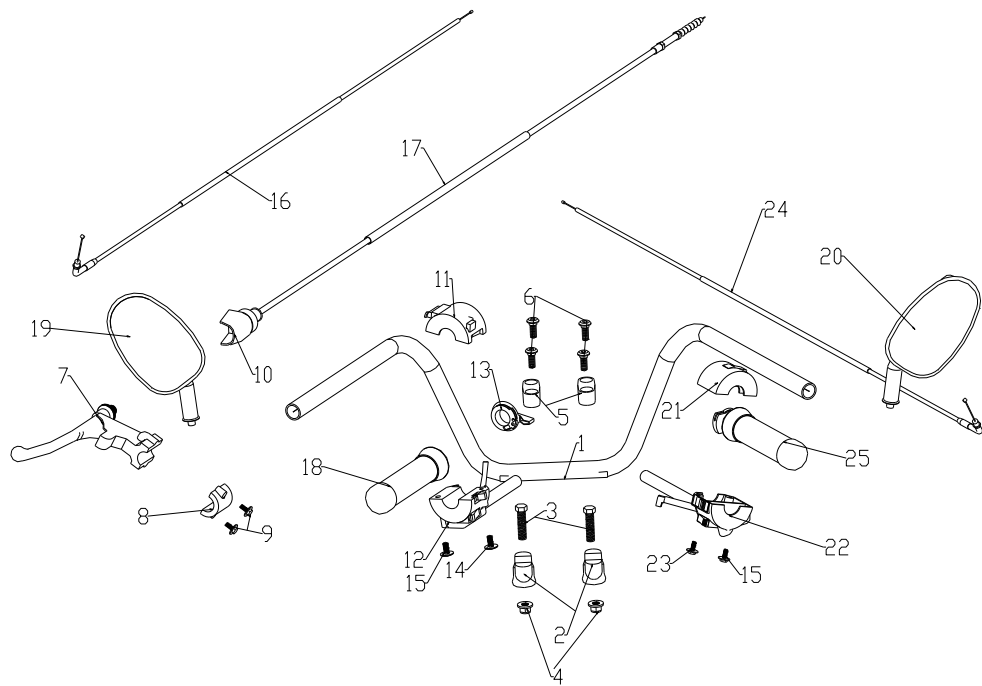
### F-9 COVER

REF. NO.	PART NO.	DESCRIPTION	Q.T.Y
1-1	F0901-	Fender, front (SUZUKI RED)	5
1-2	F0901-	Fender, front (SUZUKI BLUE)	5
1-3	F0901-03	Fender, front (BLACK)	5
1-4	F0901-	Fender, front (HONDA RED)	5
1-5	F0901-05	Fender, front (SILVER BLUE)	5
1-3	F0901-	Fender, front (BLACK GOLDEN)	5
2	F0902	Bolt M6×35	4
3-1	F0903-	Cover, side LH (SUZUKI RED)	5
3-2	F0903-	Cover, side LH (SUZUKI BLUE)	5
3-3	F0903-03	Cover, side LH (BLACK)	5
3-4	F0903-	Cover, side LH (HONDA RED)	5
3-5	F0903-05	Cover, side LH (SILVER BLUE)	5
3-	F0903-	Cover, side LH (BLACK GOLDEN)	5
4-1	F0904-	Cover, side RH (SUZUKI RED)	5
4-2	F0904-	Cover, side RH (SUZUKI BLUE)	5
4-3	F0904-03	Cover, side RH (BLACK)	5
4-4	F0904-	Cover, side RH (HONDA RED)	5
4-5	F0904-05	Cover, side RH (SILVER BLUE)	5
4-	F0904-	Cover, side RH (BLACK GOLDEN)	5
5	F0905	Rubber Washer, side cover	3
6	F0906	Rubber Washer, side cover lower	1
7	F0907	Screw M6×12	2
8	F0908	Box, tools	1
9-1	F0909-01	Fender, rear (SILVER WHITE)	1
9-2	F0909-02	Fender, rear (JEWEL BLUE)	1
9-3	F0909-03	Fender, rear (BLACK)	1



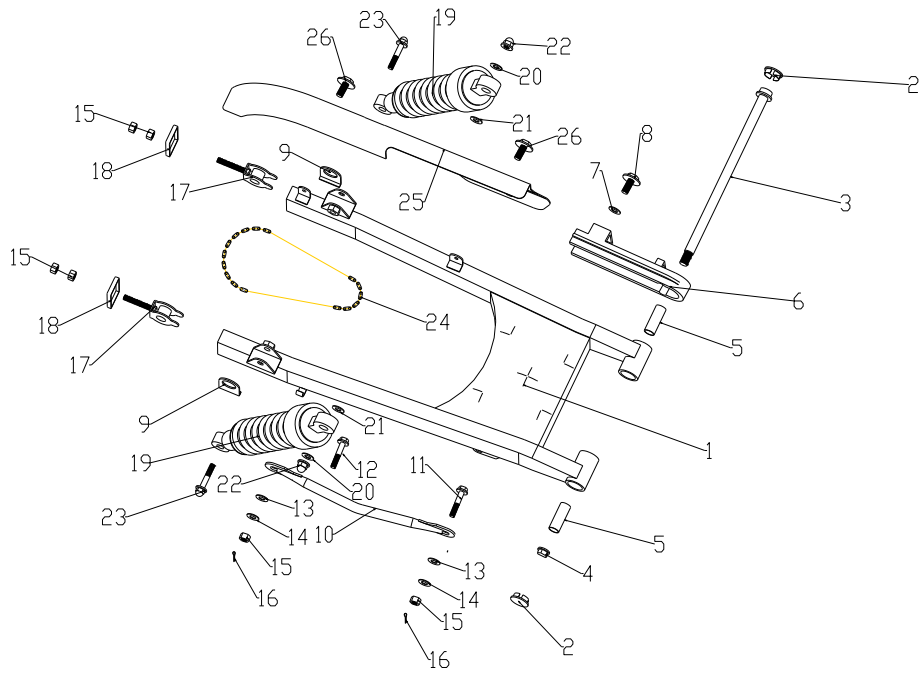
**F-9 COVER**

REF. NO.	PART NO.	DESCRIPTION	Q.T.Y
9-4	F0909-04	Fender, rear (CHAMPAGNE GOLD NO.3)	1
9-5	F0909-05	Fender, rear (SILVER BLUE NO.1)	1
10	F0910	Flap	1
11	F0911		2
12	F0912	Nut M6	8
13	F0913	Holder, rear fender	1
14	F0914	Rubber Washer, rear fender	8
15	F0915	Holder, rear number plate	1
16	F0916		2
17	F0917	Lock, seat	1
18	F0918		2
19	F0919	Holder, seat lock	1
20	F0920		2
21	F0921	Cable, seat lock	1



### F-10 HANDLE BAR

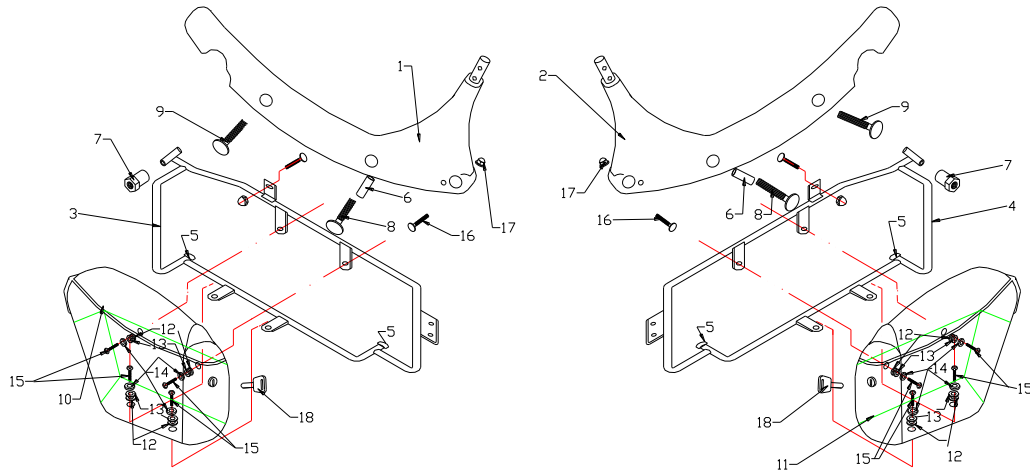
REF. NO.	PART NO.	DESCRIPTION	Q.T.Y
1	F1001	Handle Bar	1
2	F1002	Steering Stem Head	2
3	F1003		2
4	F1004		2
5	F1005	Clamp, handle bar	2
6	F1006		4
7	F1007	Grip, clutch	1
8	F1008	Clamp, clutch grip	1
9	F1009		2
10	F1010	Cable, clutch grip	30
11	F1011	Switch, handle LH upper	1
12	F1012	Switch, handle LH lower	1
13	F1013	Spanner, throttle valve	1
14	F1014		2
15	F1015		1
16	F1016	Cable, throttle valve	20
17	F1017	Cable, clutch	40
18	F1018	Grip LH	1
19	F1019	Mirror Assy rear view LH	1
20	F1020	Mirror Assy rear view RH	1
21	F1021	Switch, handle RH upper	1
22	F1022	Switch, handle RH lower	1
23	F1023		1
24	F1024	Cable, throttle	30
25	F1025	Grip Camp, throttle	1



### F-11 REAR ARM SUSPENSION

REF. NO.	PART NO.	DESCRIPTION	Q.T.Y
1	F1101	Swinging Arm	15
2	F1102	Cover, swinging arm shaft	10
3	F1103	Shaft, swinging arm	10
4	F1104	Nut M14x1.25	1
5	F1105	Bush	20
6	F1106	Rubber, chain	10
7	F1107	Washer 6	1
8	F1108	Bolt M6x12	1
9	F1109	Scale-plate	2
10	F1110	Torque Link, rear	1
11	F1111	Bolt	1
12	F1112	Bolt	1
13	F1113	Washer 8	2
14	F1114	Spring Washer 8	2
15	F1115	Nut M8	6
16	F1116		2
17	F1117	Adjustor, chain	10
18	F1118	Plate, chain adjustor	10
19	F1119	Absorber, rear	10
20	F1120	Washer 10	2
21	F1121	Washer 12	2
22	F1122		2
23	F1123		2
24	F1124	Chain, 08MBx132	10
25	F1125	Case, chain	1
26	F1126		2

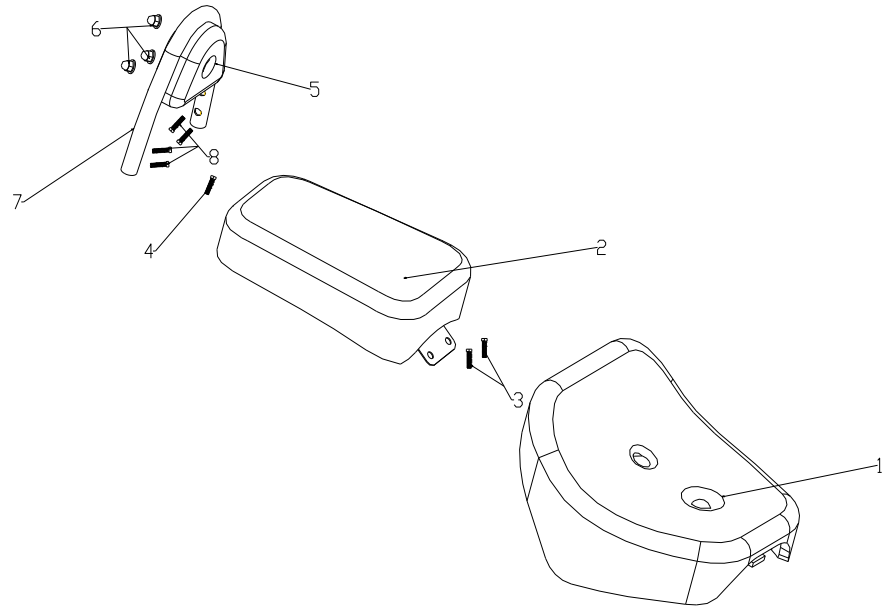




F-12

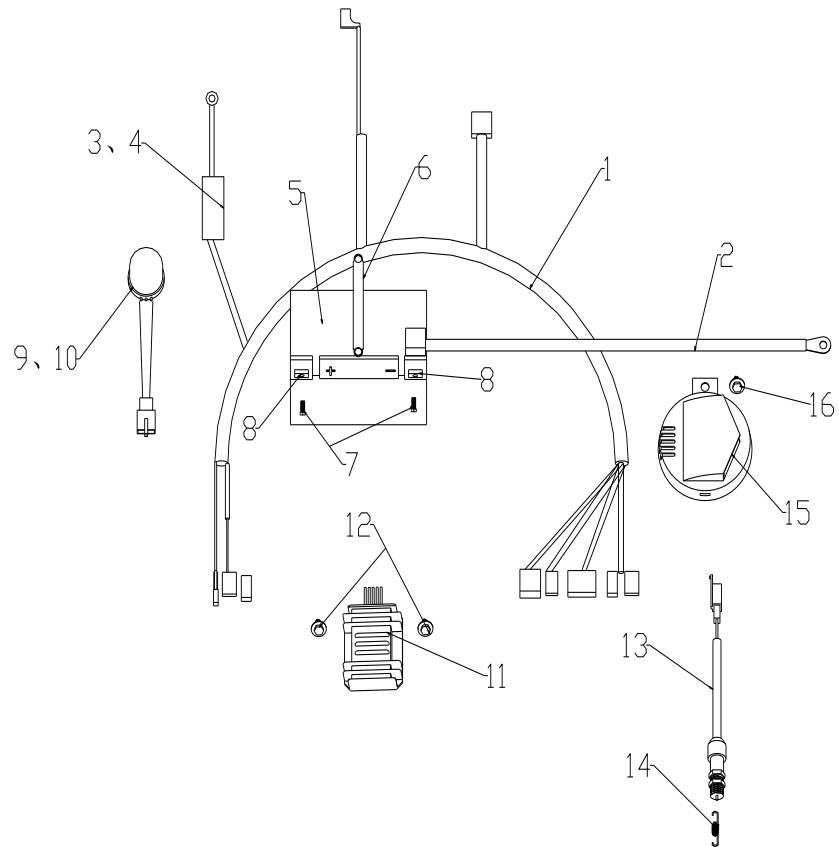
REAR GOODS BOX

REF. NO.	PART NO.	DESCRIPTION	Q.T.Y
1	F1201	Holder, back caution LH	10
2	F1202	Holder, back caution RH	10
3	F1203	Holder, goods box LH	1
4	F1204	Holder, goods box RH	1
5	F1205	Cap, rubber	4
6	F1206	Spaler, packing box	2
7	F1207	Front spacer, packing box	30
8	F1208	Bolt M8×70	2
9	F1209	Bolt M8×55	2
10-1	F1210-	Goods Box LH (SUZUKI RED)	5
10-2	F1210-	Goods Box LH (SUZUKI BLUE)	5
10-3	F1210-03	Goods Box LH (BLACK)	5
10-4	F1210-	Goods Box LH (HONDA RED)	5
10-5	F1210-	Goods Box LH (BLUE)	5
10-6	F1210-	Goods Box LH (WINE-COLOUR)	5
11-1	F1211-01	Goods Box LH (SUZUKI RED)	5
11-2	F1211-02	Goods Box LH (SUZUKI BLUE)	5
11-3	F1211-03	Goods Box LH (BLACK)	5
11-4	F1211-04	Goods Box LH (HONDA RED)	5
11-5	F1211-05	Goods Box LH (BLUE)	5
11-6	F1211-	Goods Box LH (WINE-COLOUR)	5
12	F1212	Rubber Washer	8
13	F1213	Spacer	8
14	F1214	Washer 6	8
15	F1215	Screw M6×24	8
16	F1216	Nut M8	2
17	F1217	Nut M8	2
18	F1218	Key + lock (compl.)	20



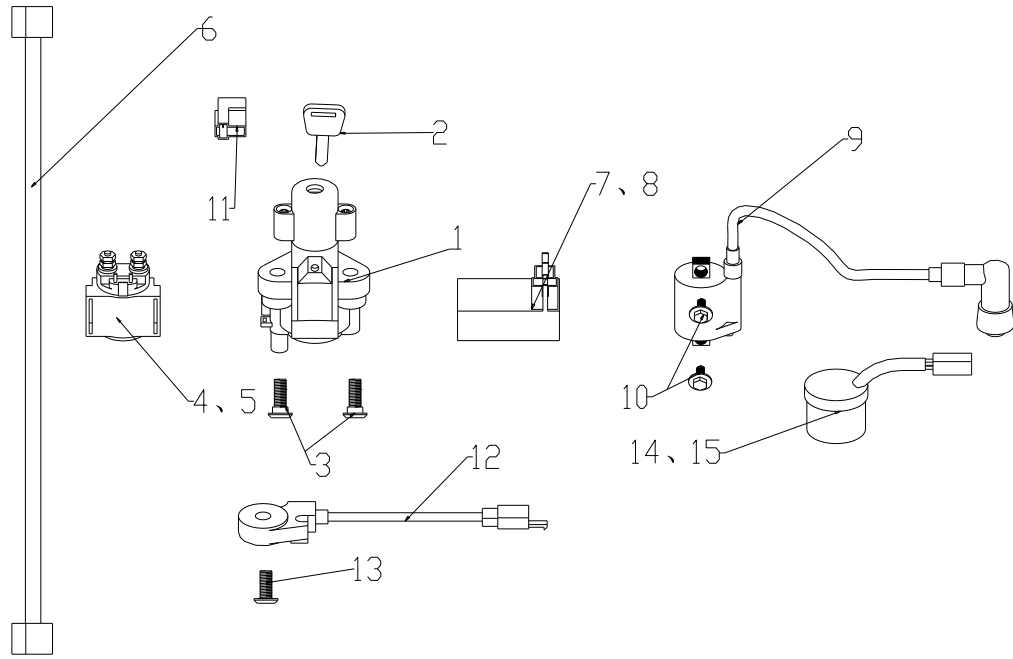
F-13 SEAT

REF. NO.	PART NO.	DESCRIPTION	Q.T.Y
1	F1301	Seat, front	1
2	F1302	Seat, rear	1
3	F1303	Bolt M6×16	1
4	F1304		1
5	F1305	Back Caution, rear	1
6	F1306	Nut M6	3
7	F1307	Holder	1
8	F1308	Bolt M6×16	4



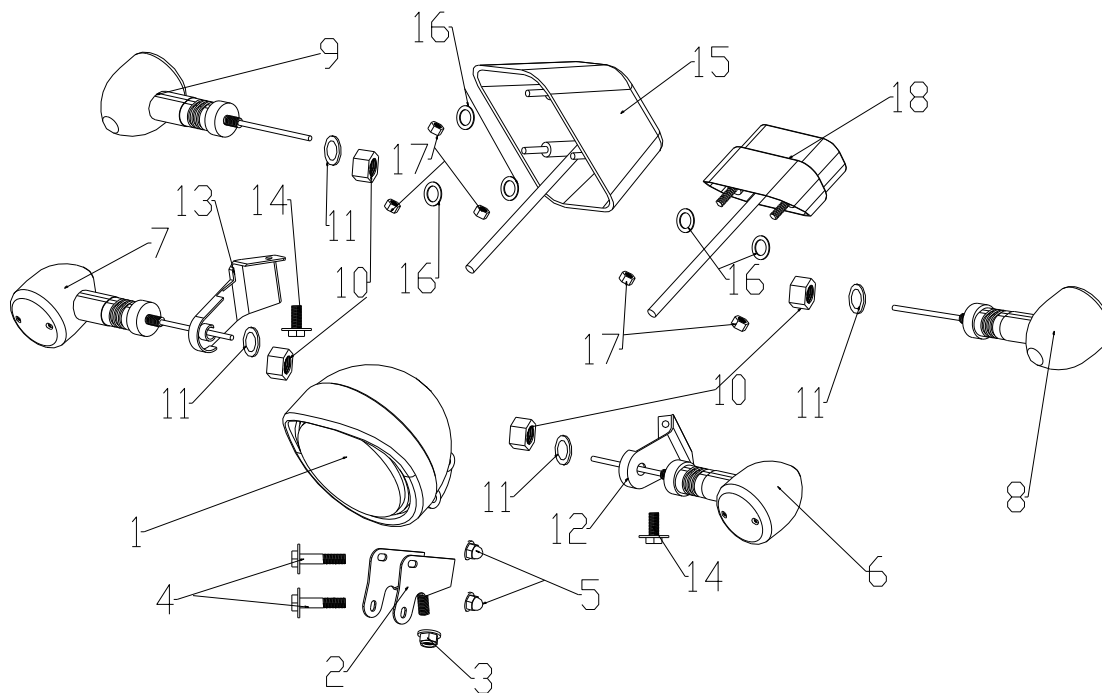
**F-14 POWER WIRE**

REF. NO.	PART NO.	DESCRIPTION	Q.T.Y
1	F1401	Wire, power	6
2	F1402	Wire, earth	1
3	F1403	Fuse	2
4	F1404	Box, fuse	1
5	F1405	Battery	20
6	F1406	Band, battery	1
7	F1407	Bolt M6×12	2
8	F1408	Nut M6	2
9	F1409	Flasher	1
10	F1410	Housing flasher	1
11	F1411	Rectifier Assy.	1
12	F1412	Bolt M6×14	2
13	F1413	Switch, rear brake	1
14	F1414	Spring, rear brake	1
15	F1415	Horn	1
16	F1416	Bolt M8×12	1



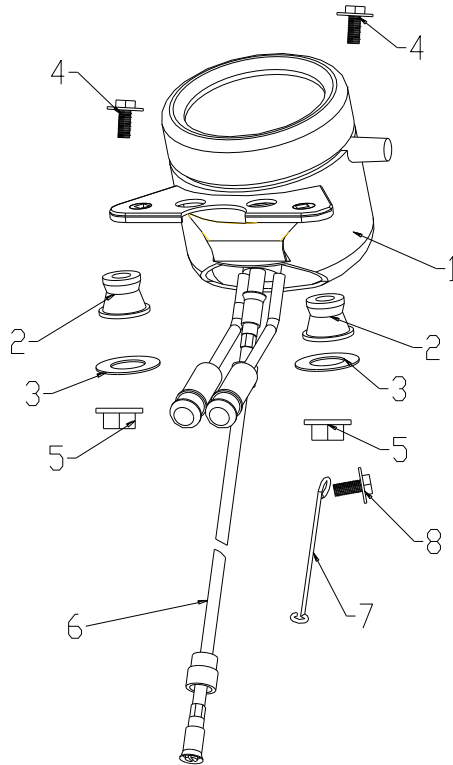
F-15 IGNITION SYSTEM

REF. NO.	PART NO.	DESCRIPTION	Q.T.Y
1	F1501	Main switch	10
2	F1502	Key	20
3	F1503	Screw M8×30	2
4	F1504	Relay, strating	1
5	F1505	Housing, starting relay	1
6	F1506	Wire, power	1
7	F1507	CDI unit	1
8	F1508	Housing, CDI unit	1
9	F1509	Coil, ignition	20
10	F1510	Bolt M6×16	2
11	F1511	Z.D	1
12	F1512	Protect switch, side standing	1
13	F1513	Screw M6×20	1
14	F1514	Relay, protection	20
15	F1515	Housing, relay	20



### F-16 LIGHTING-LIGHT-SIGNALLING

REF. NO.	PART NO.	DESCRIPTION	Q.T.Y
1	F1601	Head lamp	1
2	F1602	Holder, head lamp	1
3	F1603	Nut M10×1.5	1
4	F1604	Bolt M6×50	2
5	F1605	Nut M6	2
6	F1606	Front Direction Light LH	1
7	F1607	Front Direction Light RH	1
8	F1608	Rear Direction Light LH	1
9	F1609	Rear Direction Light RH	1
10	F1610	Nut M10×1.5	4
11	F1611	Washer 10	4
12	F1612	Holder,front direction light LH	1
13	F1613	Holder, front direction light RH	1
14	F1614	Bolt M6×12	2
15	F1615	Tail Light	1
16	F1616	Washer 6	5
17	F1617	Nut M6	5
18	F1618	Rear Number-plate Light	1



F-17 SPEEDOMETER

REF. NO.	PART NO.	DESCRIPTION	Q.T.Y
1	F1701	Speedometer	10
2	F1702	Cushion	2
3	F1703	Plain Washer 6	2
4	F1704	Bolt M6×30	2
5	F1705	Nut M6	2
6	F1706	Cable, speedometer	30
7	F1707	Clip, speedometer	1
8	F1708	Bolt M6×12	1