

# PARTS CATALOGUE

JL250-5 MOTORCYCLE

CIXI KINGRING MOTORCYCLE CO.,LTD.

## INDEX

E-1 Cylinder Head Cover .....	1
-------------------------------	---

E-2	Cylinder Comp	3
E-3	Clutch Cover Comp	4
E-4	Crankcase Comp	5
E-5	Magneto Cover Assy.	7
E-6	Crank·Connecting Rod·Piston	8
E-7	Camshaft·Valve	9
E-8	Carburetor	10
E-9	Oil Pump	12
E-10	Clutch	13
E-11	Transmission	14
E-12	Gearshaft	15
E-13	Electrical system	16
E-14	Electricity starting assembly	17
E-15	Left rear crankcase cover assy.	18
F-1	FRONT ARM SUSPENSION	19
F-2	FRONT WHEEL	20
F-3	REAR WHEEL	21
F-4	FRAME	22
F-5	FUEL TANK	23
F-6	CARBURETOR·AIR CLEANER·MUFFLER	24
F-7	FRONT BRAKE	25
F-8	BRAKE PEDAL·FOOTREST	26
F-9	COVER	27
F-10	HANDLE BAR	29
F-11	REAR ARM SUSPENSION	30

F-12 REAR GOODS BOX.....	31
F-13 SEAT.....	32
F-14 POWER WIRE.....	33
F-15 IGNITION SYSTEM .....	34
F-16 LIGHTING·LIGHT·SIGNALLING .....	35
F-17 SPEEDOMETER.....	36

Address: Kingring Development Zone, Cixi City, Zhejiang, P.R.China

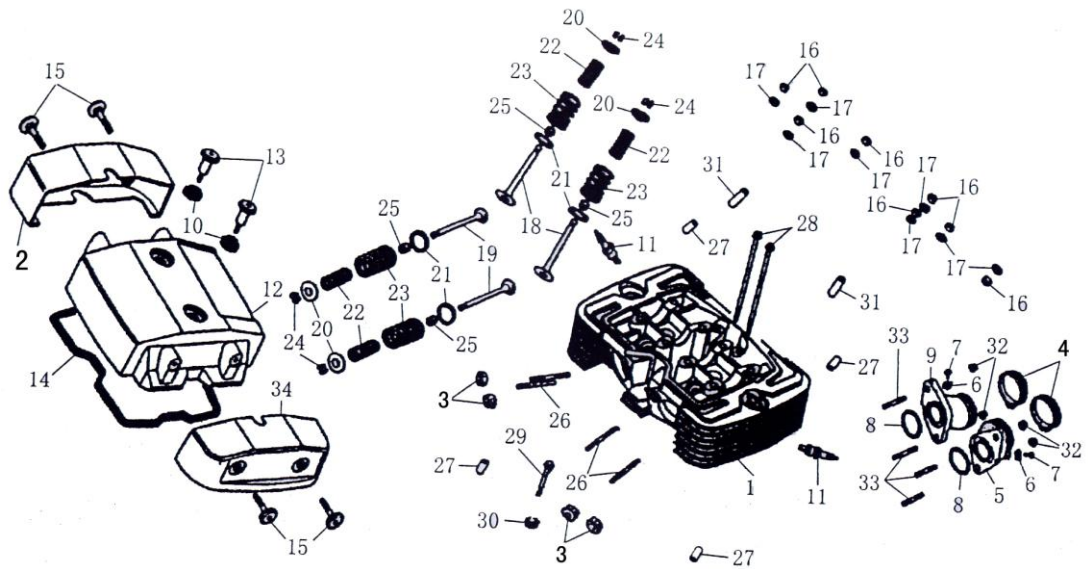
Tel: 86-574-63218692

Fax: 86-574-63218193

Code: 315301

Http: [www.kingringmotor.com](http://www.kingringmotor.com)

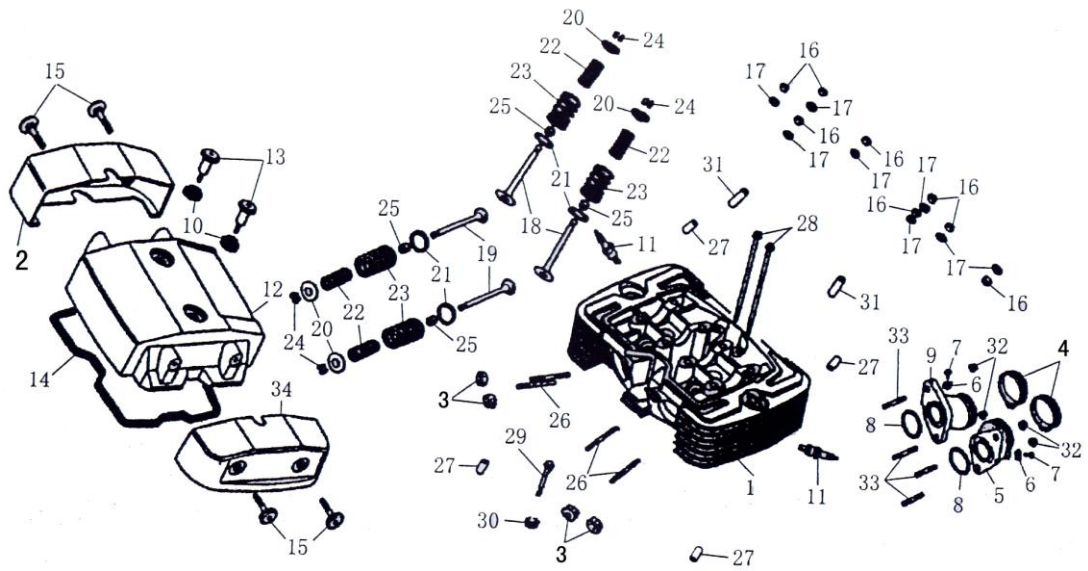
Email: [motor@kingring.com](mailto:motor@kingring.com)



E-1 Cylinder Head Cover

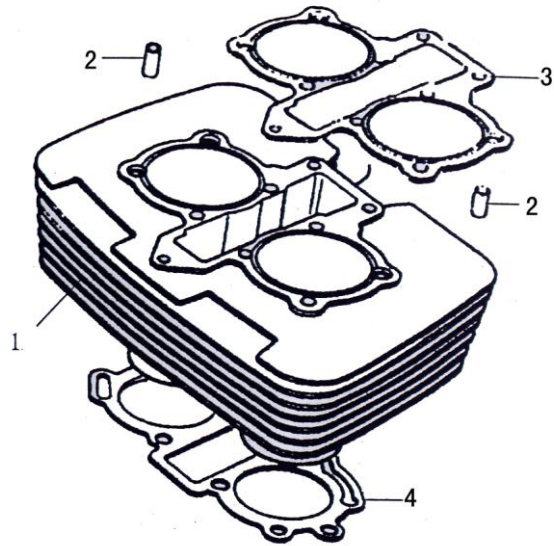
REF. NO.	PART NO.	DESCRIPTION	Q.T.Y
1	E0101	Head comp , cylinder	3
2	E0102	Side cover , cylinder head	2
3	E0103	Cap nut M8	4
4	E0104	Band insulator ( 21~44 )	2
5	E0105	Left manifold , intake	5
6	E0106	Washer 5	2
7	E0107	Screw M5×8	2
8	E0108	O-ring $\phi$ 26×2.5	2
9	E0109	Ring manifold , intake	5
10	E0110	Rubber , mounting	2
11	E0111	Plug , spark A6RTC	2
12	E0112	Cover , cylinder head	1
13	E0113	Bolt , special	2
14	E0114	Packing , head cover	1
15	E0115	Connect screw of cover	4
16	E0116	Nut , hex M8	8
17	E0117	Washer 8	8
18	E0118	Valve , in	6
19	E0119	Valve , ex	6

20	E0120	Retainer , valve spring	4
21	E0121	Seat , valve spring outer	4
22	E0122	Spring , valve inner	4
23	E0123	Spring , valve outer	4
24	E0124	Cotter , valve	8
25	E0125	Seal , valve stem	4
26	E0126	Bolt stud of escape pipe	4
27	E0127	Pin , dowel $\phi$ 10×16	4



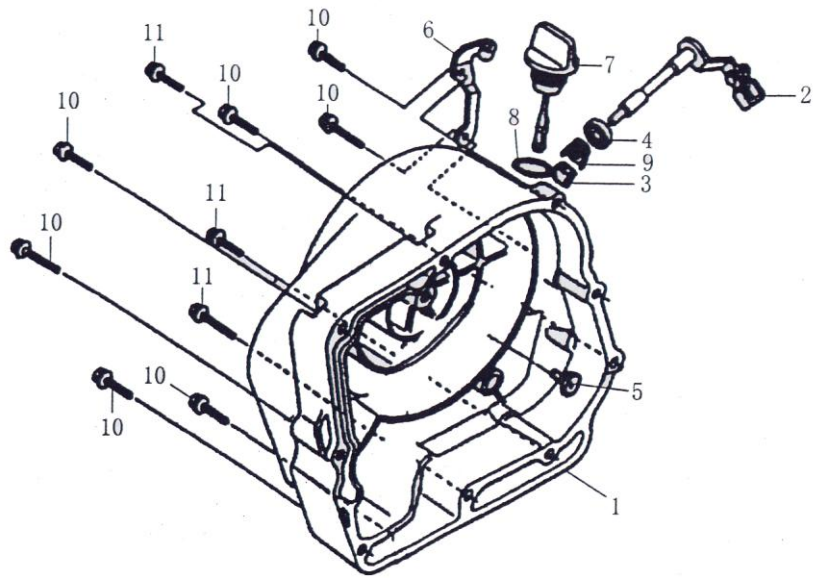
E-1 Cylinder Head Cover

REF. NO.	PART NO.	DESCRIPTION	Q.T.Y
28	E0128	Bolt M6×145	2
29	E0129	Bolt M6×65	1
30	E0130	Nut M6	1
31	E0131	Pin , dowel ( 10×28 )	2
32	E0132	Nut M6	4
33	E0133	Bolt stud M6×29	4



### E-2 Cylinder Comp

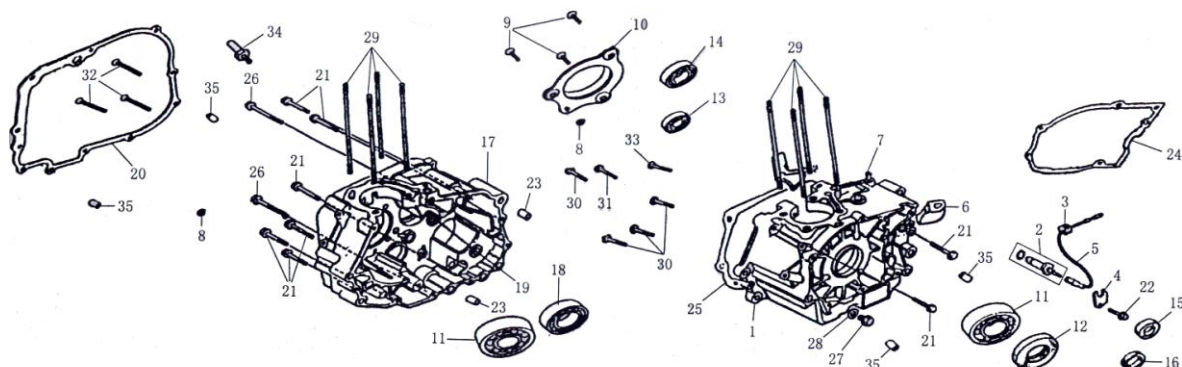
REF. NO.	PART NO.	DESCRIPTION	Q.T.Y
1	E0201	Cylinder comp	1
2	E0202	Pin , dowel ( 8×14 )	2
3	E0203	Gasket , cylinder head	10
4	E0204	Gasket , cylinder	1



### E-3 Clutch Cover Comp

REF. NO.	PART NO.	DESCRIPTION	Q.T.Y
1	E0301	Cover comp , right crankcase	1
2	E0302	Lever comp , clutch	1
3	E0303	Bearing HK1210	2
4	E0304	Oil seal ( 12×18×5 )	1
5	.E0305	Pin , clutch lifter	1
6	E0306	Receiver , clutch cable	1
7	E0307	Gauge , oil level	10
8	E0308	O-ring $\phi$ 18×3	1
9	E0309	Spring , clutch lever	1
10	E0310	Bolt M6×40	7
11	E0311	Bolt M6×50	3

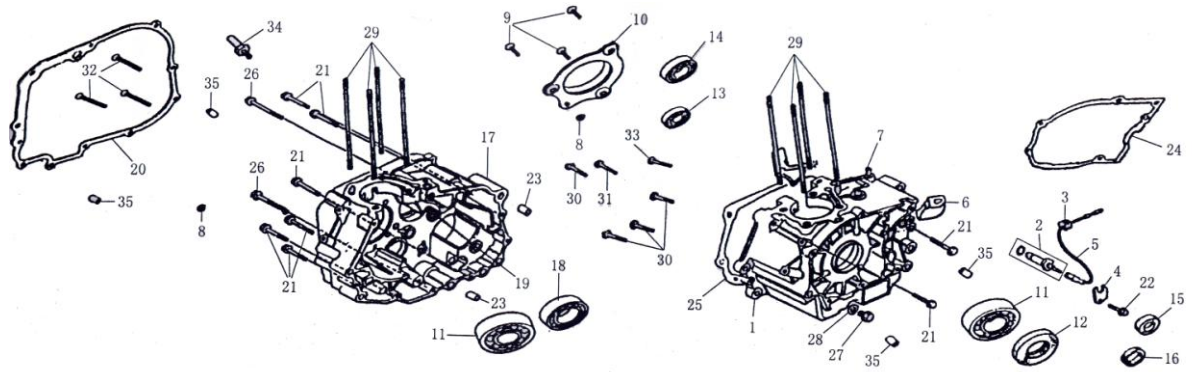




### E-4 Crankcase Comp

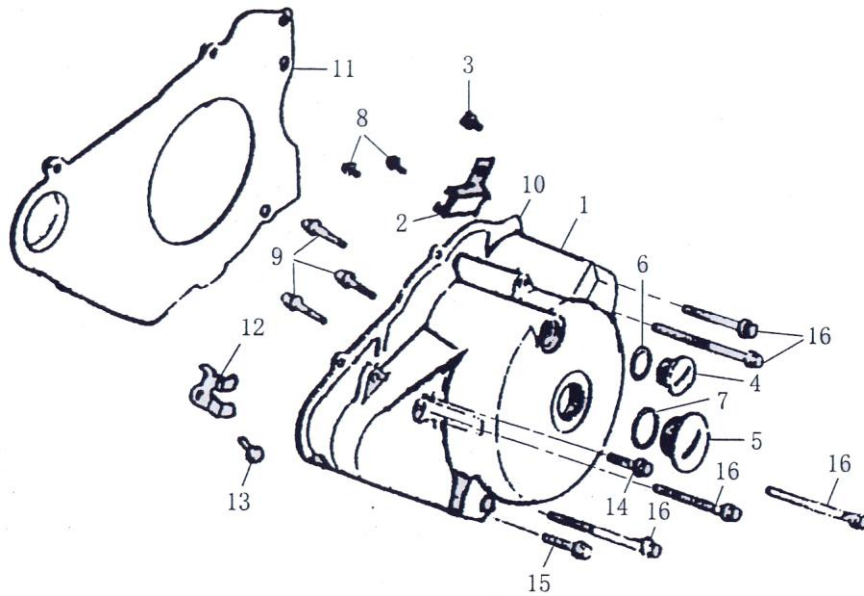
REF. NO.	PART NO.	DESCRIPTION	Q.T.Y
1	E0401	Left crankcase	1
2	E0402	Contact neutral switch	1
3	E0403	Protecting jacket , sub cord neutral )	1
4	E0404	Plate , neutral switch setting	1
5	E0405	Sub cord neutral switch	1
6	E0406	Protecting jacket , alternator Outline	1
7	E0407	Rubber pipe cover	1
8	E0408	O-ring ( 6×3 )	2
9	E0409	Screw M6×16	3
10	E0410	Plate , oil through	1
11	E0411	Bearing 6305/P6	2
12	E0412	Oil seal ( 35×52×7 )	20
13	E0413	Bearing 6202-Z/P6	1
14	E0414	Bearing 22×47×14-RS/P6	1
15	E0415	Oil seal ( 22×34×7 )	20
16	E0416	Oil seal ( 11.6×24×10 )	20
17	E0417	Right crankcase	1
18	E0418	Roller bearing 6304/P6	1
19	E0419	Needle-bearing HK152312	1
20	E0420	Gasket , right crankcase cover	20
21	E0421	Bolt M6×40	8

22	E0422	Bolt M6×12	1
23	E0423	Pin , dowel $\phi$ 12×20	2
24	E0424	Gasket , side spacer	20
25	E0425	Gasket , crankcase	20
26	E0426	Bolt M6×65	2
27	E0427	Screw M12×1.5	1
28	E0428	Washer 12	1
29	E0429	Bolt , cylindr head stud	8
30	E0430	Bolt M8×1×35	4
31	E0431	Bolt M7×26	1



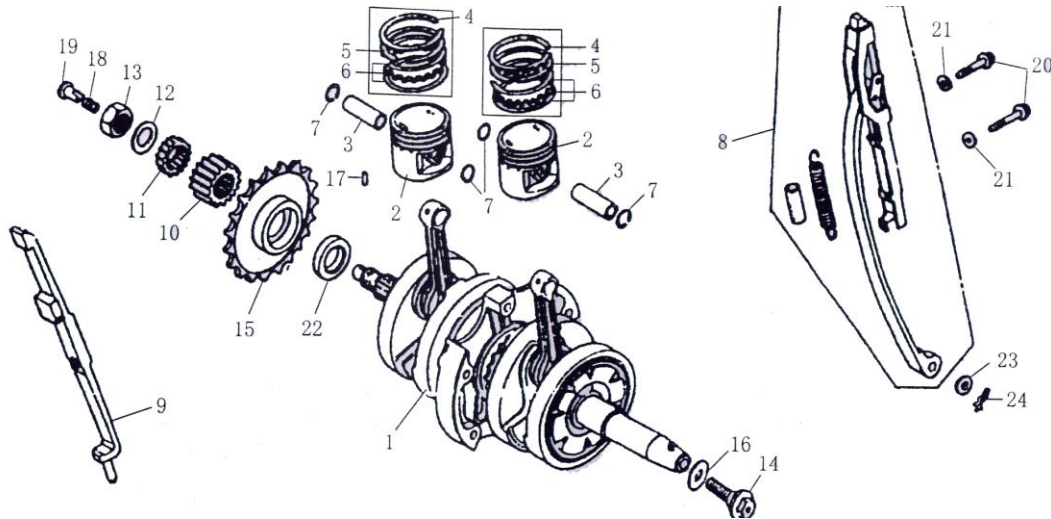
#### E-4 Crankcase Comp

REF. NO.	PART NO.	DESCRIPTION	Q.T.Y
32	E0432	Screw M6×32	3
33	E0433	Bolt M8×1×30	1
34	E0434	Pin , shift	1
35	E0435	Pin , dowel ( 8×14 )	4



E-5 Magneto Cover Assy

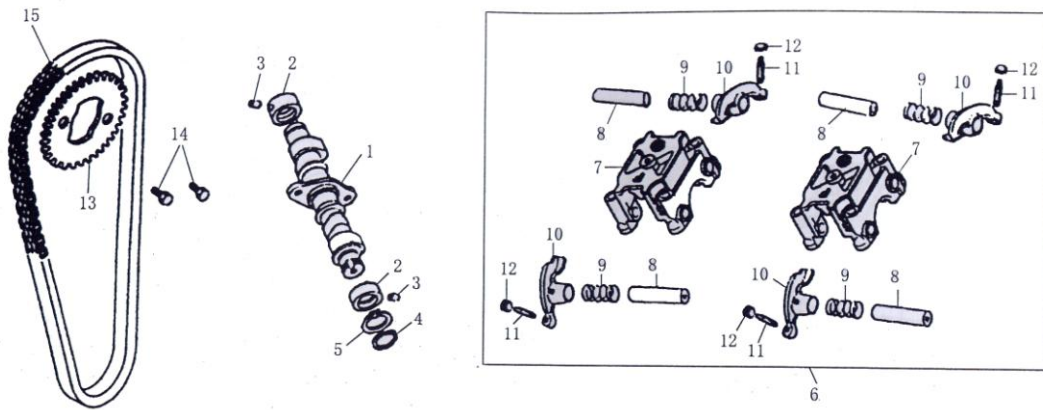
REF. NO.	PART NO.	DESCRIPTION	Q.T.Y
1	E0501	Cover , left crankcase	1
2	E0502	Clamper , cord	1
3	E0503	Screw , socket M5×30	1
4	E0504	Screw M14×1.5	1
5	E0505	Screw M30×1.5	1
6	E0506	O-ring 13.8×25	1
7	E0507	O-ring 27.4×2.4	1
8	E0508	Screw , socket M6×20	2
9	E0509	Screw , socket M5×30	3
10	E0510	Gasket , left crankcase cover	1
11	E0511	Spacer comp , left side	1
12	E0512	Plate , starting sprocket setting	1
13	E0513	Bolt M6×10	1
14	E0514	Bolt M6×20	1
15	E0515	Bolt M6×50	1
16	E0516	Bolt M6×65	5



### E-6 Crank·Connecting Rod·Piston

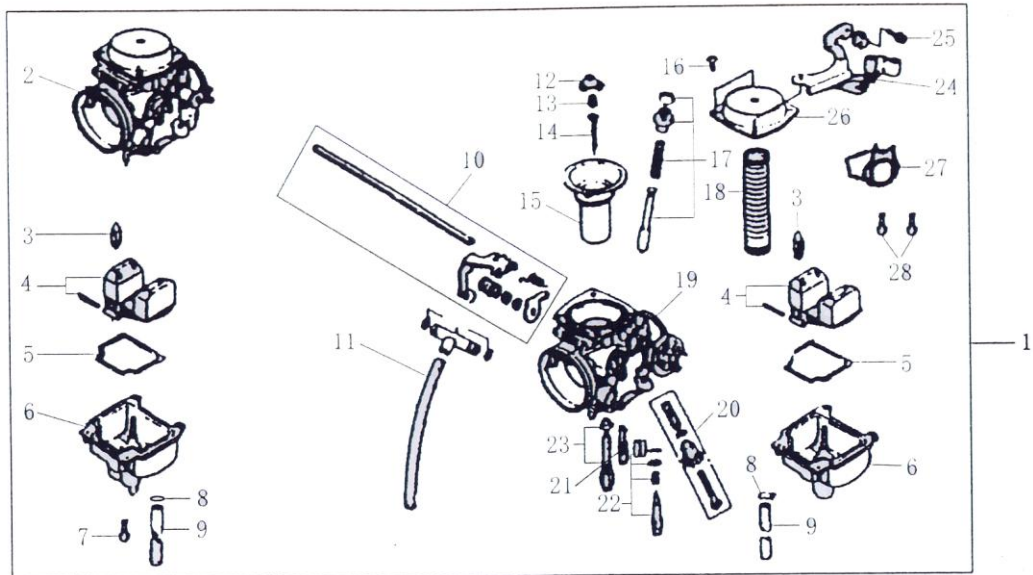
REF. NO.	PART NO.	DESCRIPTION	Q.T.Y
1	E0601	Crank , shaft comp	1
2	E0602	Piston	2
3	E0603	Pin , piston	2
4	E0604	1st piston ring	2
5	E0605	2nd piston ring	2
6	E0606	Oil ring comp	2
7	E0607	Clip , piston pin	4
8	E0608	Chain stretching comp	5
9	E0609	Guide , cam chain	1
10	E0610	Gear , primary drive	1
11	E0611	Gear , oil pump drive	1
12	E0612	Gear , oil pump drive	1
13	E0613	Washer , lock	1
14	E0614	Nut , hex	1

15	E0615	Bolt , rotor setting	1
16	E0616	Sprocket comp , starting	1
17	E0617	Washer 12	1
18	E0618	Stud 2×14	1
19	E0619	Spring , oil through	1
20	E0620	Through oil	1
21	E0621	Bolt M6×26	2
22	E0622	Washer 6	2
23	E0623	Oil seal ( 22×31×5 )	1
24	E0624	Plate washer	1
25	E0625	Pin , lock	1



### E-7 Camshaft-Valve

REF. NO.	PART NO.	DESCRIPTION	Q.T.Y
1	E0701	Camshaft	1
2	E0702	Bush , camshaft	2
3	E0703	Pin , dowel bush camshaft	2
4	E0704	Circlip , external	1
5	E0705	Washer , thrust	1
6	E0706	Holder comp , camshaft	2
7	E0707	Holder , camshaft	2
8	E0708	Shaft , valve rocker arm	4
9	E0709	Spring , rocker arm side	4
10	E0710	Arm , valve rocker	4
11	E0711	Screw , tappet adjusting	4
12	E0712	Nut , tappet adjusting	4
13	E0713	Sprocket , cam	1
14	E0714	Bolt M7×13	2
15	E0715	Chain , cam	3

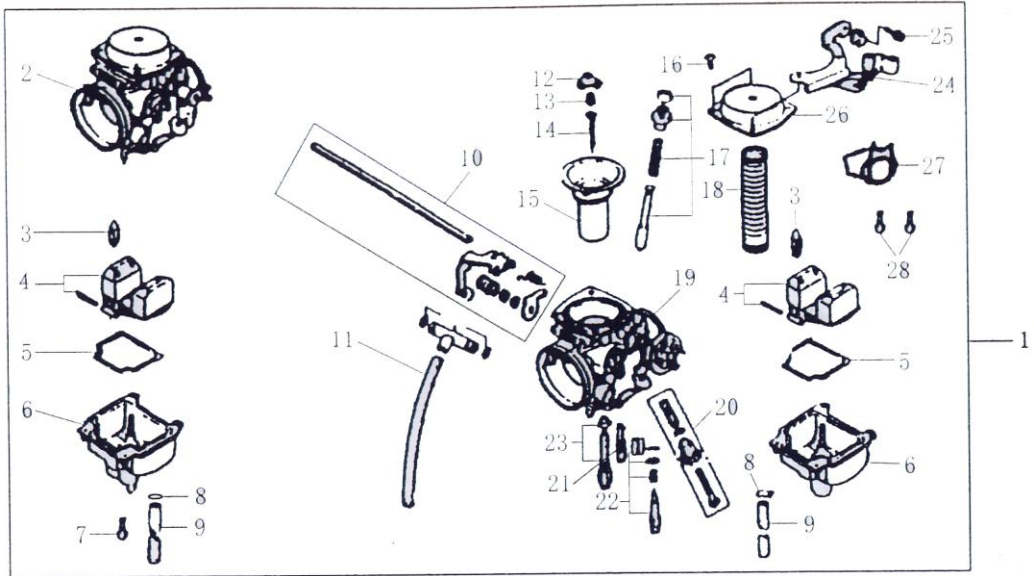


### E-8 Carburetor

REF. NO.	PART NO.	DESCRIPTION	Q.T.Y
1	E0801	Carburetor,assy	1
2	E0802	Left carburetor comp	1
3	E0803	Float pin	2
4	E0804	Float set	2
5	E0805	Gasket , float chamber	2
6	E0806	Chamber set , float	2
7	E0807	Screw M4×14	8
8	E0808	Clip , tube	2
9	E0809	Over petrol tube	2
10	E0810	Starter control rob comp	1
11	E0811	Connecting petrol pipe comp	1
12	E0812	Limited plate	2
13	E0813	Spring	2
14	E0814	Pin , petrol	2
15	E0815	Vacuum piston valve	2
16	E0816	Screw M4×8	8
17	E0817	Starter thicken valve set	1
18	E0818	Reset spring	2
19	E0819	Right carburetor comp	1
20	E0820	Screw set	1
21	E0821	Jet , slow	2
22	E0822	Jet , main	2

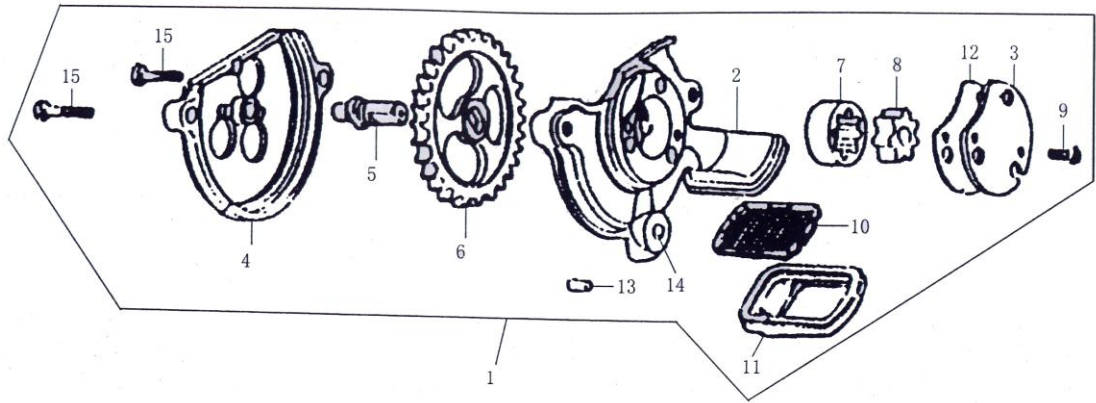


23	E0823	Screw set	2
----	-------	-----------	---



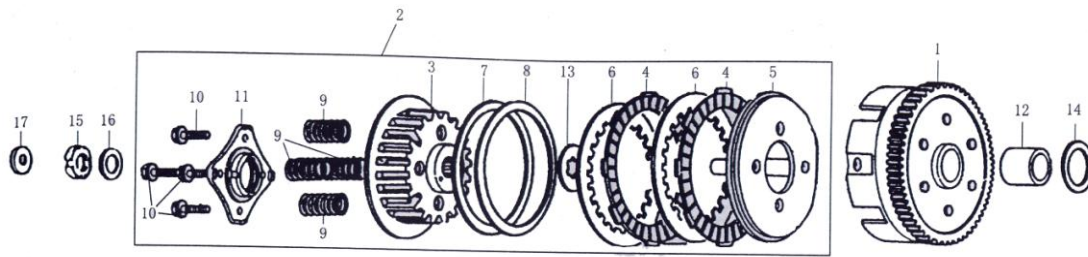
E-8 Carburetor

REF. NO.	PART NO.	DESCRIPTION	Q.T.Y
24	E0824	Frament	1
25	E0825	Screw M4×10	2
26	E0826	Vacuum piston valve cover	2
27	E0827	Decorative cover , carburetor	1
28	E0828	Bolt M4×6	2



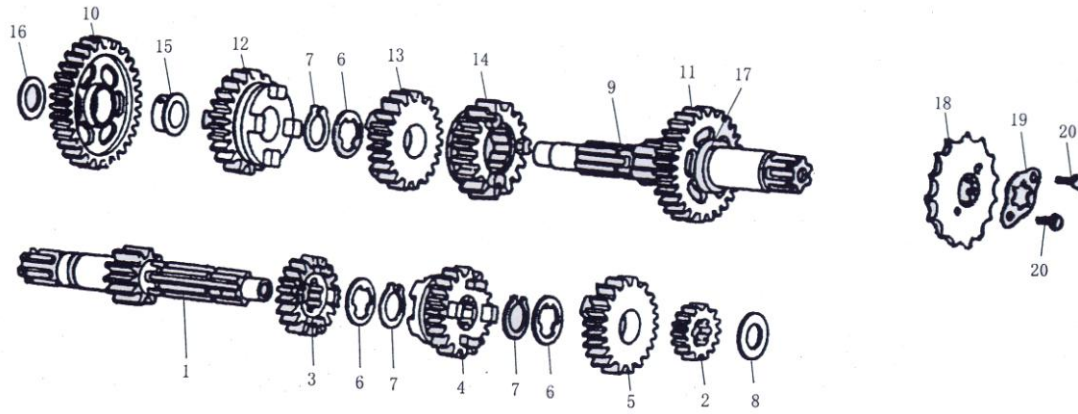
### E-9 Oil Pump

REF. NO.	PART NO.	DESCRIPTION	Q.T.Y
1	E0901	Pump assy , oil	2
2	E0902	Oil pump body	1
3	E0903	Oil pump cover	1
4	E0904	Back cover	1
5	E0905	Shaft , oil pump	1
6	E0906	Gear , oil pump	1
7	E0907	Rotor , oil pump outer	1
8	E0908	Rotor , oil pump inner	1
9	E0909	Screw M5×7.5	1
10	E0910	Screen , oil filter	1
11	E0911	Holder , screen	1
12	E0912	Gasket	1
13	E0913	Pin , dowel	1
14	E0914	Steel ball 8	1
15	E0915	Bolt M5×20	2



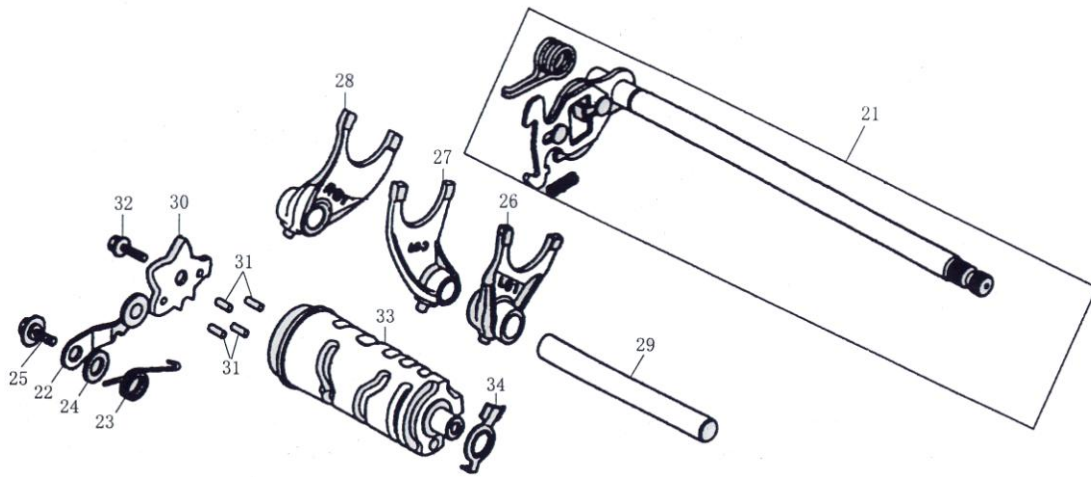
### E-10 Clutch

REF. NO.	PART NO.	DESCRIPTION	Q.T.Y
1	E1001	Outer comp , clutch	1
2	E1002	Center frame comp	1
3	E1003	Center frame	1
4	E1004	Disk , clutch friction	30
5	E1005	Plate , clutch pressure	1
6	E1006	Plate , clutch	42
7	E1007	Washer	10
8	E1008	Seat , judder spring	10
9	E1009	Spring	4
10	E1010	Bolt M6×22	4
11	E1011	Pressure cover	1
12	E1012	Guide , clutch outer	1
13	E1013	Washer , spring	1
14	E1014	Washer	1
15	E1015	Circular nut	1
16	E1016	Washer , thrust	1
17	E1017	Pushing bearing	1



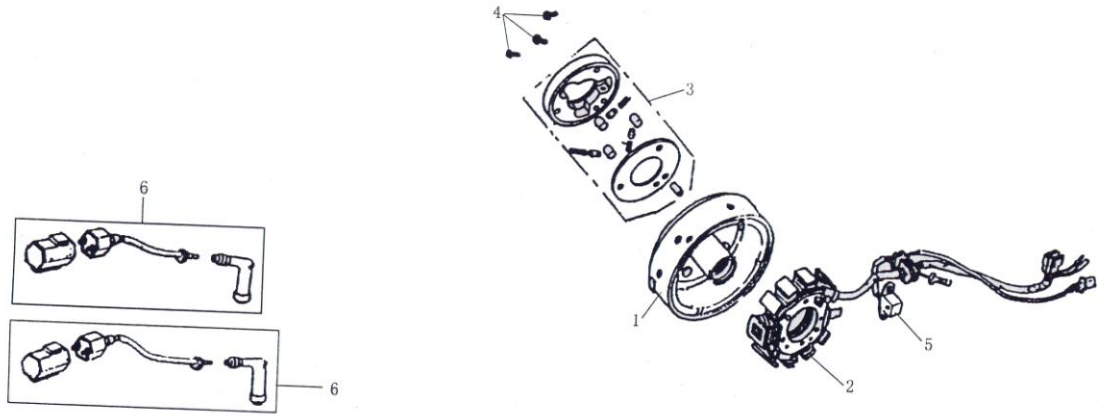
### E-11 Transmission

REF. NO.	PART NO.	DESCRIPTION	Q.T.Y
1	E1101	Mainshaft comp	2
2	E1102	Gear , mainshaft second ( 18T )	1
3	E1103	Gear , mainshaft third ( 21T )	1
4	E1104	Gear , mainshaft fourth ( 24T )	1
5	E1105	Gear , mainshaft fifth ( 23T )	1
6	E1106	Washer spline	3
7	E1107	Set ring	3
8	E1108	Washer	1
9	E1109	Countershaft comp	2
10	E1110	Gear , countershaft first ( 37T )	1
11	E1111	Gear , countershaft second ( 32T )	1
12	E1112	Gear , countershaft third ( 28T )	1
13	E1113	Gear , countershaft fourth ( 26T )	1
14	E1114	Gear , countershaft fifth ( 21T )	1
15	E1115	Bush	1
16	E1116	Washer	1
17	E1117	Retaining ring	1
18	E1118	Sprocket,counter shaft	10
19	E1119	Plate , fixing	1
20	E1120	Bolt M6×10	2



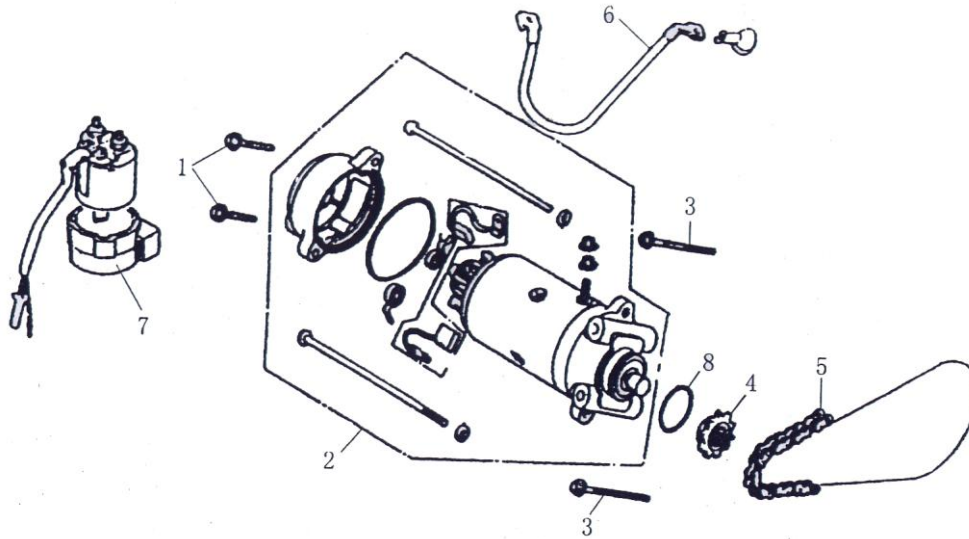
E-12 Gearshaft

REF. NO.	PART NO.	DESCRIPTION	Q.T.Y
1	E1201	Spindle comp , gearshift	1
2	E1202	Stopper comp , gearshift drum	1
3	E1203	Spring , shift drum stopper	1
4	E1204	Washer 6	1
5	E1205	Screw M6×12	1
6	E1206	Fork , left gearshift	1
7	E1207	Fork , center gearshift	1
8	E1208	Fork , right gearshift	1
9	E1209	Shaft , gearshift fork guide	1
10	E1210	Plate , drum stopper	1
11	E1211	Pin , gearshift drum	4
12	E1212	Screw M6×20	1
13	E1213	Drum , gearshift	1
14	E1214	Rotor , neutral switch	1



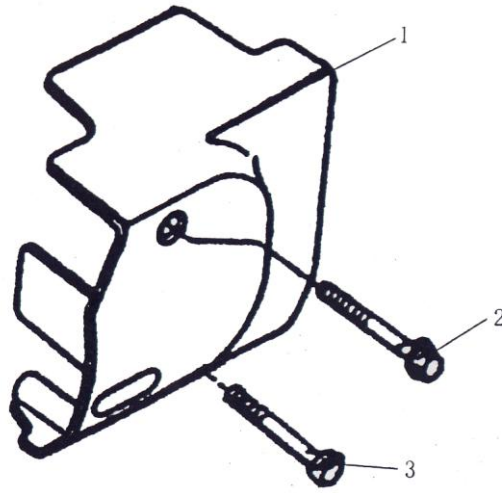
### E-13 Electrical system

REF. NO.	PART NO.	DESCRIPTION	Q.T.Y
1	E1301	Flywheel comp	1
2	E1302	Stator comp	5
3	E1303	Starting clutch	10
4	E1304	Screw M6×14	3
5	E1305	Generator assy , assy , pulse	1
6	E1306	Coil comp	2



E-14 Electricity starting assembly

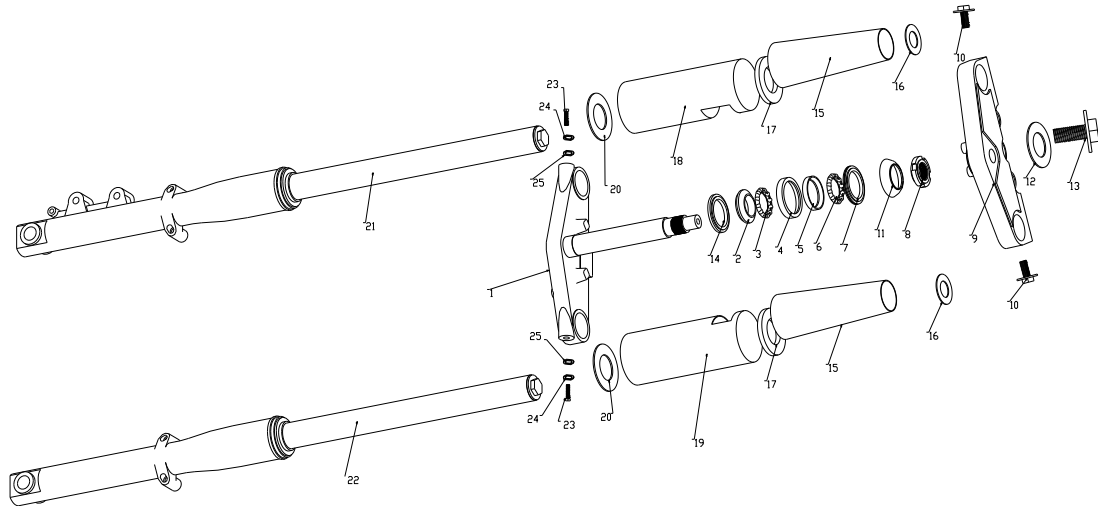
REF. NO.	PART NO.	DESCRIPTION	Q.T.Y
1	E1401	Bolt M6×22	2
2	E1402	Starting motor	1
3	E1403	Bolt M6×65	2
4	E1404	Sprocket , starting motor	1
5	E1405	Chain , starting	1
6	E1406	Cable , starting motor	1
7	E1407	Switch assy , starting magnetic	1
8	E1408	O-ring 33.5×1.8	1



E-15 Left rear crankcase cover assy

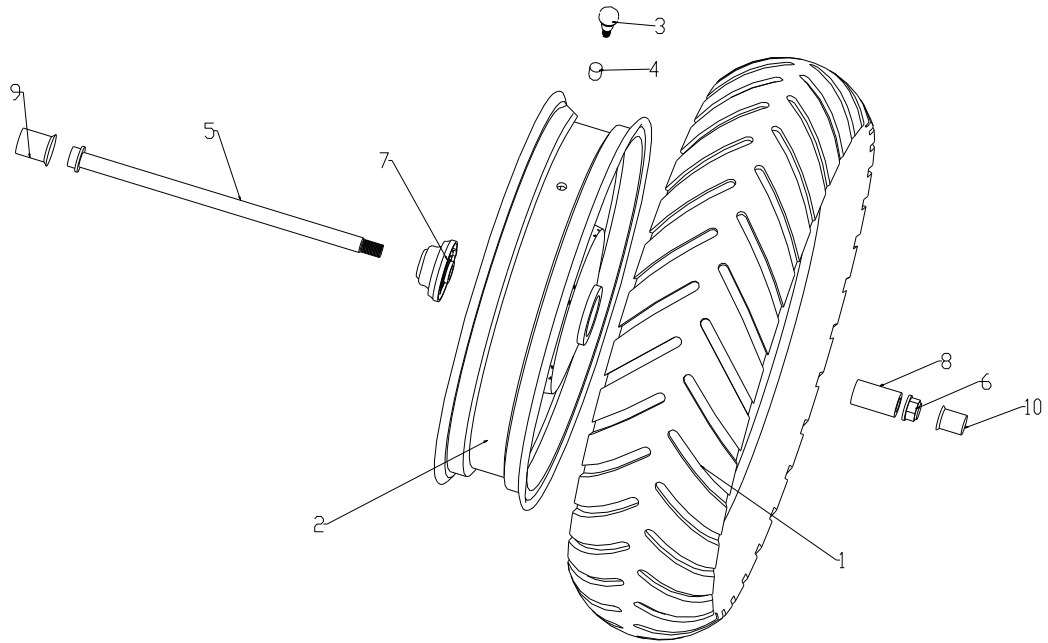
REF. NO.	PART NO.	DESCRIPTION	Q.T.Y
1	E1501	Left crankcase cover	1
2	E1502	Bolt M6×46	1
3	E1503	Bolt M6×60	1





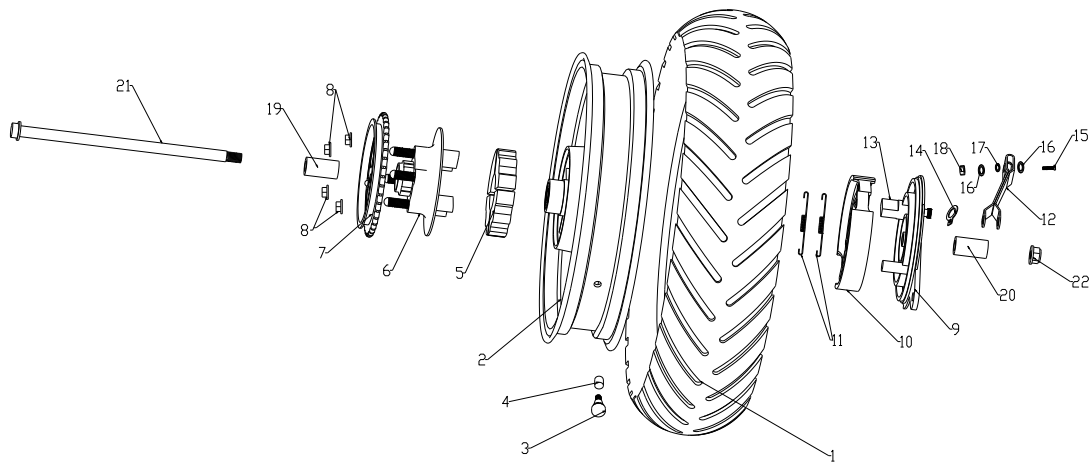
### F-1 FRONT ARM SUSPENSION

REF. NO.	PART NO.	DESCRIPTION	Q.T.Y
1	F0101	Steering Assy.	1
2	F0102	Rase, ball lower	1
3	F0103	Braket, ball lower	1
4	F0104	Rase, frame	1
5	F0105	Rase, frame	1
6	F0106	Bracket, ball upper	1
7	F0107	Rase, ball upper	1
8	F0108	Nut	1
9	F0109	Holder, suspension upper	1
10	F0110		2
11	F0111	Cover, protecting	1
12	F0112	Plain Washer 10	1
13	F0113		1
14	F0114	Washer, rubber	1
15	F0115	Tube,upper	2
16	F0116	Rubber, upper tube	2
17	F0117	Rubber, Lower tube	2
18	F0118	Tube, Lower LH	1
19	F0119	Tube,Lower RH	1
20	F0120	Rubber, tube	2
21	F0121	Front Absorber LH	1
22	F0122	Front Absorber RH	1
23	F0123		2
24	F0124	Spring Washer 8	2
25	F0125	Plain Washer 8	2



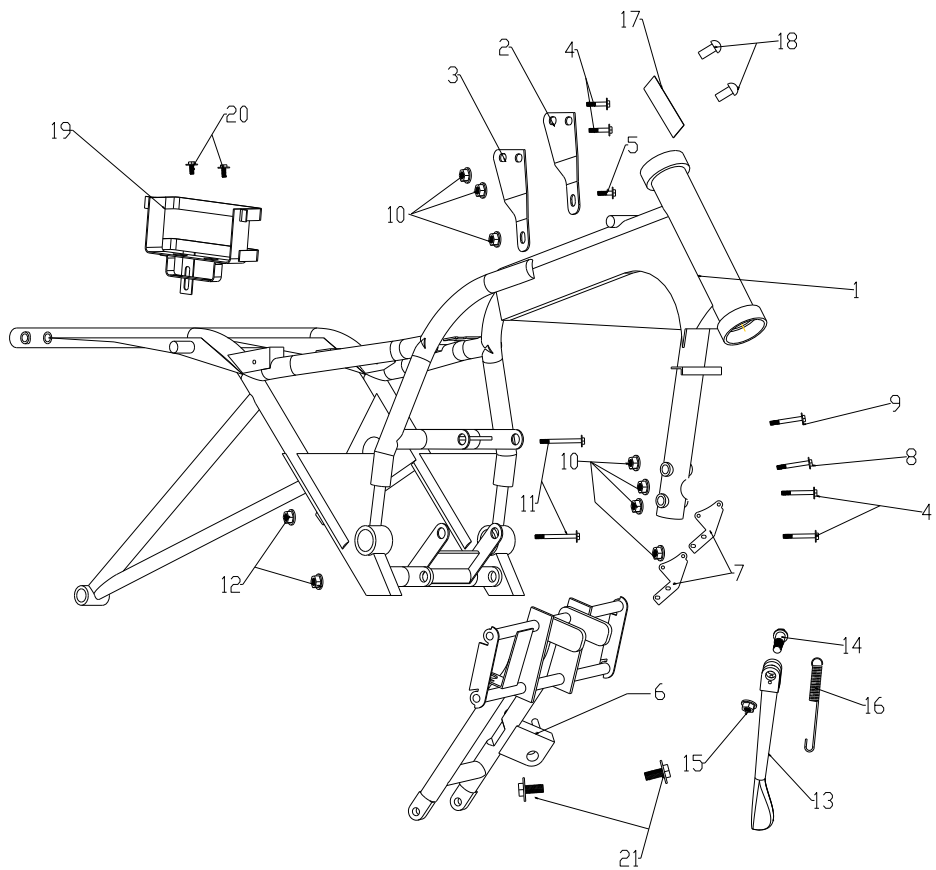
F-2 FRONT WHEEL

REF. NO.	PART NO.	DESCRIPTION	Q.T.Y
1	F0201	Tire Comp, front	1
2	F0202	Rim, front wheel	1
3	F0203	Valve, intake	1
4	F0204	Cap valve intake	1
5	F0205	Axle, front wheel	1
6	F0206		1
7	F0207	Box Assy, transmission	1
8	F0208	Spacer	1
9	F0209		1
10	F0210		1



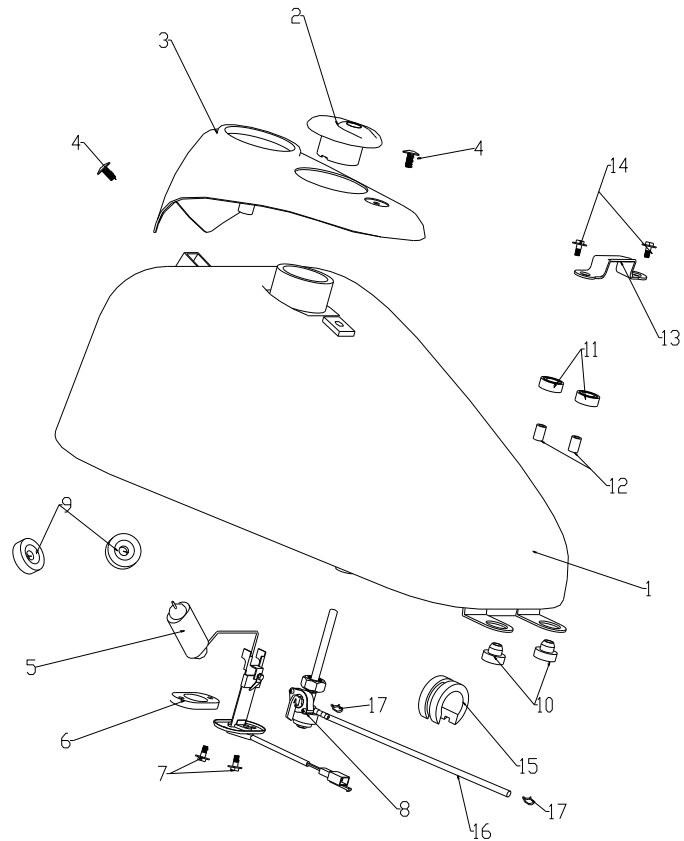
### F-3 REAR WHEEL

REF. NO.	PART NO.	DESCRIPTION	Q.T.Y
1	F0301	Tire, rear wheel	1
2	F0302	Rim, rear wheel	1
3	F0303	Valve, intake	1
4	F0304	Cap valve intake	1
5	F0305	Cushion, rear wheel	4
6	F0306	Guide chain	1
7	F0307	Sprocket, rear	10
8	F0308		4
9	F0309	Panel, rear brake	1
10	F0310	Shoe, rear brake	2
11	F0311	Spring, rear brake	2
12	F0312	Lever, brake cam	1
13	F0313	Cam, rear brake	1
14	F0314	Plate, timing chain	1
15	F0315		1
16	F0316	Plain Washer 6	2
17	F0317	Spring Washer 6	1
18	F0318	Nut M6	1
19	F0319	Spacer, rear axle L	1
20	F0320	Spacer, rear axle R	1
21	F0321	Axle, rear wheel	1
22	F0322		1



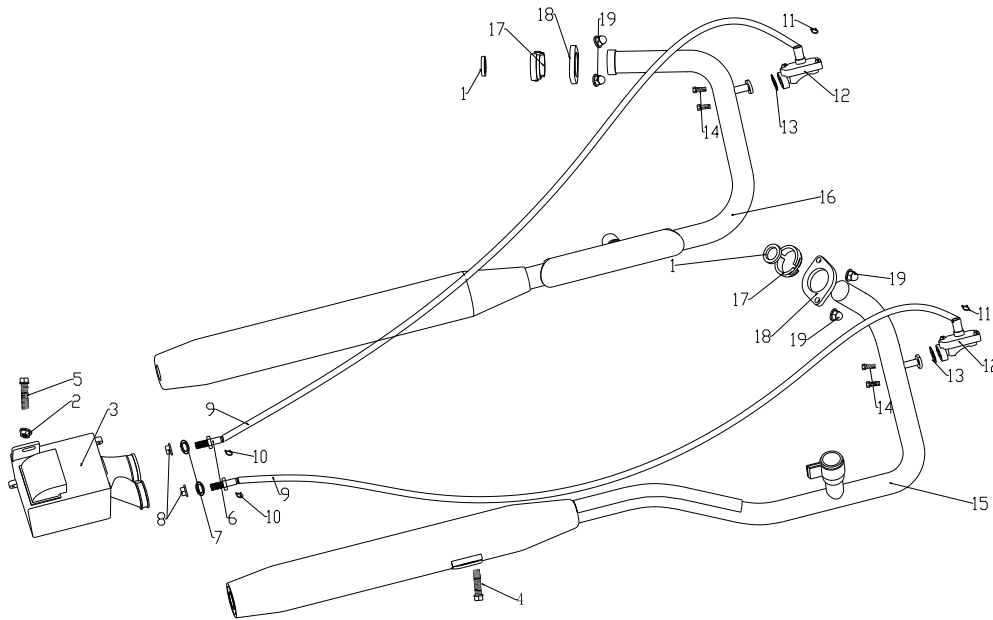
**F-4 FRAME**

REF. NO.	PART NO.	DESCRIPTION	Q.T.Y
1	F0401	Frame	1
2	F0402	Plate, upper LH	1
3	F0403	Plate, upper RH	1
4	F0404		1
5	F0405		4
6	F0406	Holder, engine	1
7	F0407		
8	F0408		1
9	F0409		1
10	F0410	Nut M8	7
11	F0411		2
12	F0412		2
13	F0413	Stand, prop	1
14	F0414	Screw	1
15	F0415		1
16	F0416	Spring	1
17	F0417	Plate, name	1
18	F0418		2
19	F0419	Holder, battery	1
20	F0420		2
21	F0421		2



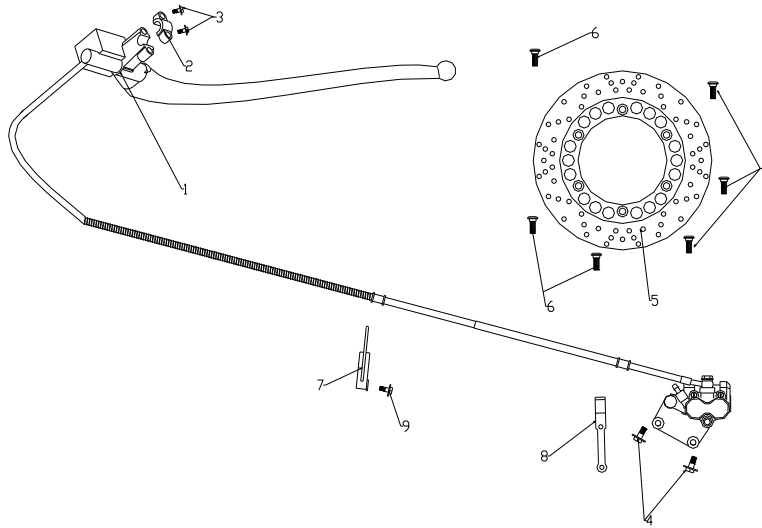
#### F-5 FUEL TANK

REF. NO.	PART NO.	DESCRIPTION	Q.T.Y
1-1	F0501-01	Fuel Tank (SILVER WHITE)	1
1-2	F0501-02	Fuel Tank (JEWEL BLUE)	1
1-3	F0501-03	Fuel Tank (BLACK)	1
1-4	F0501-04	Fuel Tank (CHAMPANE GOLD NO.3)	1
1-5	F0501-05	Fuel Tank (SILVER BLUE NO.1)	1
2	F0502	Cap,fuel tank	1
3	F0503	Fuelometer Assy.	1
4	F0504		2
5	F0505	Fuel level sensor	1
6	F0506	Seal, Fuel unit	1
7	F0507		2
8	F0508	Switch, fuel tank	1
9	F0509	Cushion	2
10	F0510	Cushion	2
11	F0511	Cushion	2
12	F0512	Spacer	2
13	F0513	Plate	1
14	F0514		2
15	F0515	Cushion	1
16	F0516	Hose	1
17	F0517	Clip	2



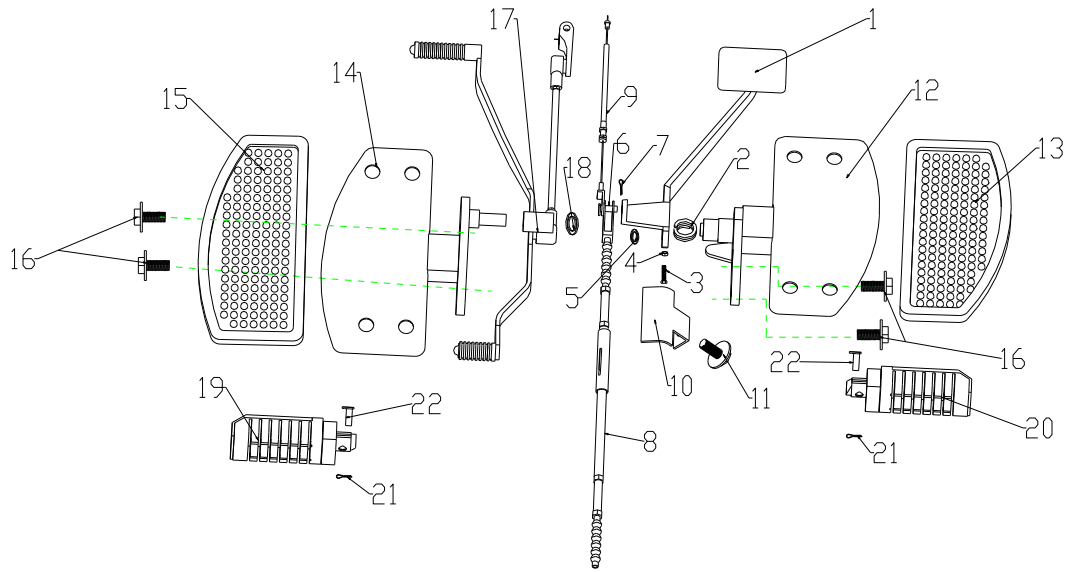
**F-6 CARBURETOR·AIR CLEANER·MUFFLER**

REF. NO.	PART NO.	DESCRIPTION	Q.T.Y
1	F0601	Washer, seal	40
2	F0602	Nut M6	1
3	F0603	Air Cleaner	1
4	F0604		1
5	F0605		1
6	F0606	Bolt, second air in	2
7	F0607	Washer, seal	2
8	F0608		2
9	F0609	Rubber pipe, second air in	2
10	F0610		2
11	F0611		2
12	F0612	Valve, second air in	2
13	F0613	Gasket	2
14	F0614		4
15	F0615	Muffler LH	3
16	F0616	Muffler RH	3
17	F0617	Clamp	2
18	F0618	Flange	2
19	F0619	Nut M8	4



F-7 FRONT BRAKE

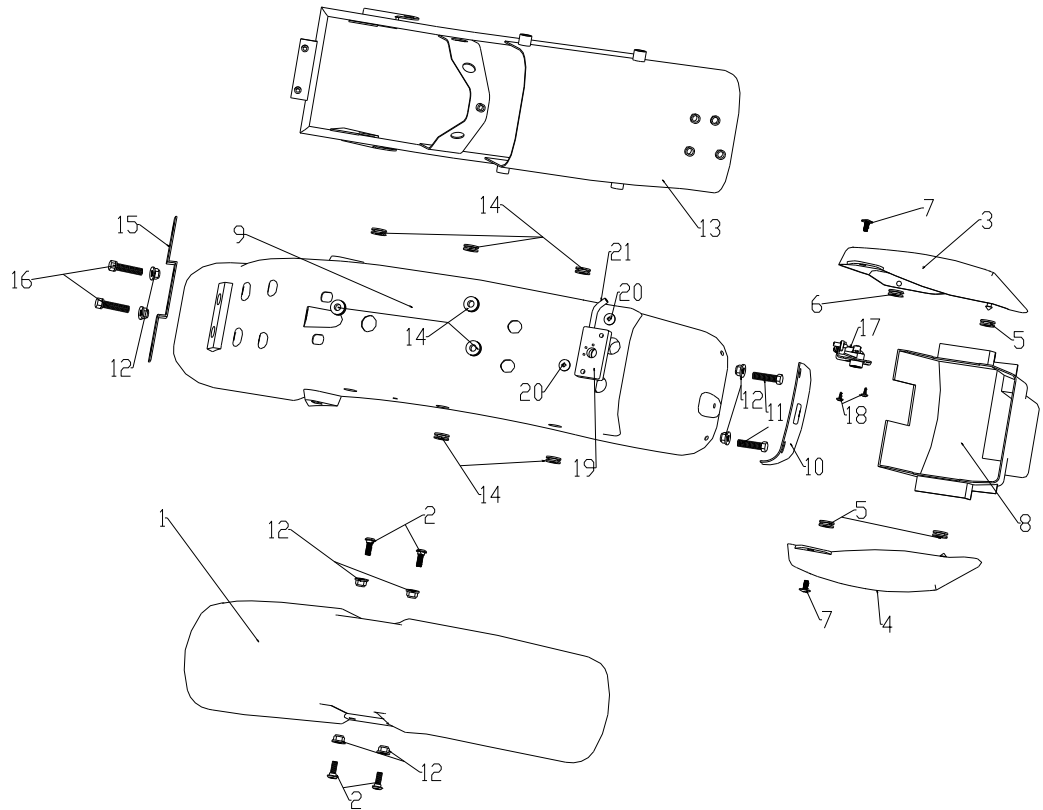
REF. NO.	PART NO.	DESCRIPTION	Q.T.Y
1	F0701	Disk Brake	1
2	F0702	Holder	1
3	F0703	Clip, brake hose upper	2
4	F0704	Clip, brake hose lower	2
5	F0705	Disk, brake	1
6	F0706	Screw	6
7	F0707	Clip, brake hose upper	1
8	F0708	Clip, brake hose lower	1
9	F0709		1



### F-8 BRAKE PEDAL·FOOTREST

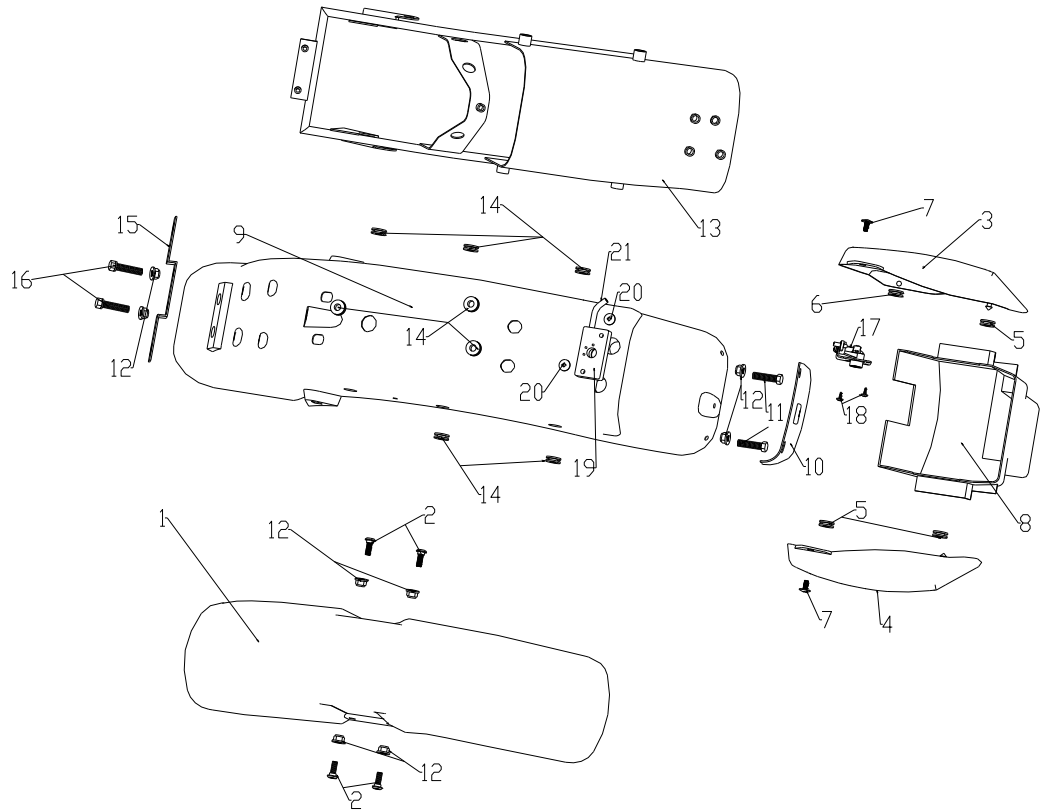
REF. NO.	PART NO.	DESCRIPTION	Q.T.Y
1	F0801	Pedal, brake	1
2	F0802	Spring,pedal return	1
3	F0803		1
4	F0804	Nut M6	1
5	F0805	“E” Rings	1
6	F0806		1
7	F0807		1
8	F0808	Brake Control Caple, rear	1
9	F0809	Brake Switch Caple, rear	1
10	F0810	Protecting Jacket, brake	1
11	F0811		1
12	F0812	Front Footrest, RH	1
13	F0813	Rubber, front footrest,RH	1
14	F0814	Front Footrest, LH	1
15	F0815	Rubber, front footrest,LH	1
16	F0816		4
17	F0817	<b>Gearshift Control Lever</b>	<b>5</b>
18	F0818	“E” Rings	1
19	F0819	Rear Footrest, LH	1
20	F0820	Rear Footrest, RH	1
21	F0821		2
22	F0822		2





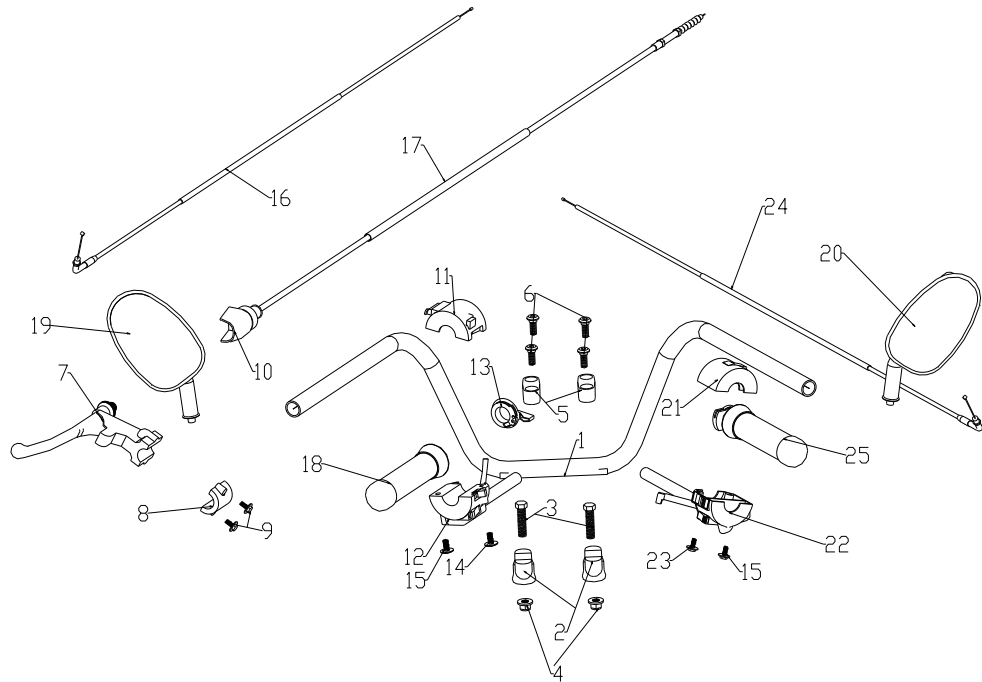
#### F-9 COVER

REF. NO.	PART NO.	DESCRIPTION	Q.T.Y
1-1	F0901-01	Fender, front (SILVER WHITE)	1
1-2	F0901-02	Fender, front (JEWEL BLUE)	1
1-3	F0901-03	Fender, front (BLACK)	1
1-4	F0901-04	Fender, front (CHAMPAGNE GOLD NO.3)	1
1-5	F0901-05	Fender, front (SILVER BLUE NO.1)	1
2	F0902		4
3-1	F0903-01	Cover, side LH (SILVER WHITE)	1
3-2	F0903-02	Cover, side LH (JEWEL BLUE)	1
3-3	F0903-03	Cover, side LH (BLACK)	1
3-4	F0903-04	Cover, side LH (CHAMPAGNE GOLD NO.3)	1
3-5	F0903-05	Cover, side LH (SILVER BLUE NO.1)	1
4-1	F0904-01	Cover, side RH (SILVER WHITE)	1
4-2	F0904-02	Cover, side RH (JEWEL BLUE)	1
4-3	F0904-03	Cover, side RH (BLACK)	1
4-4	F0904-04	Cover, side RH (CHAMPAGNE GOLD NO.3)	1
4-5	F0904-05	Cover, side RH (SILVER BLUE NO.1)	1
5	F0905	Rubber Washer, side cover	3
6	F0906	Rubber Washer, side cover lower	1
7	F0907		2
8	F0908	Box, tools	1
9-1	F0909-01	Fender, rear (SILVER WHITE)	1
9-2	F0909-02	Fender, rear (JEWEL BLUE)	1
9-3	F0909-03	Fender, rear (BLACK)	1



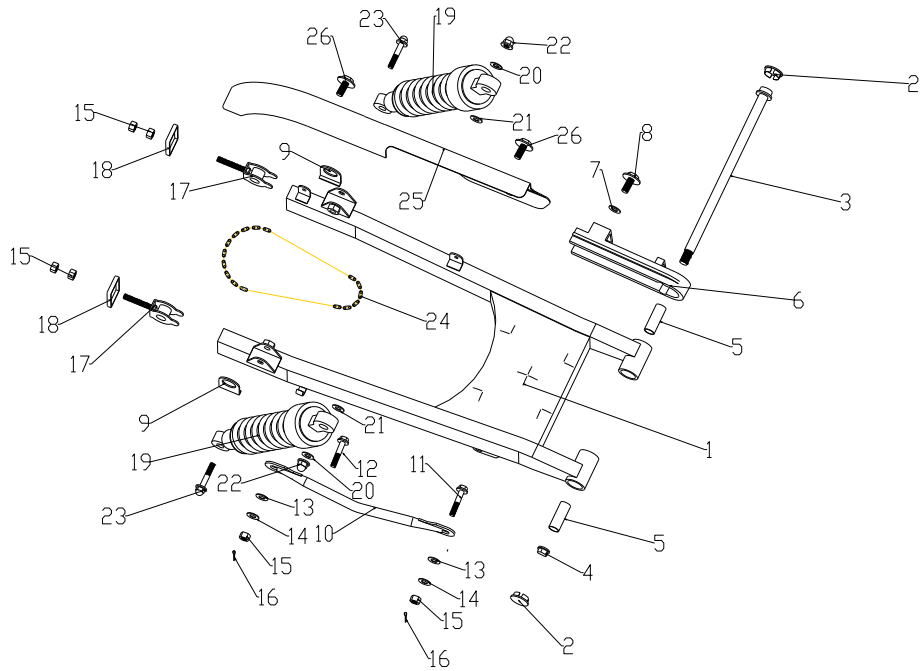
**F-9 COVER**

REF. NO.	PART NO.	DESCRIPTION	Q.T.Y
9-4	F0909-04	Fender, rear (CHAMPAGNE GOLD NO.3)	1
9-5	F0909-05	Fender, rear (SILVER BLUE NO.1)	1
10	F0910	Flap	1
11	F0911		2
12	F0912	Nut M6	8
13	F0913	Holder, rear fender	1
14	F0914	Rubber Washer, rear fender	8
15	F0915	Holder, rear number plate	1
16	F0916		2
17	F0917	Lock, seat	1
18	F0918		2
19	F0919	Holder, seat lock	1
20	F0920		2
21	F0921	Cable, seat lock	1



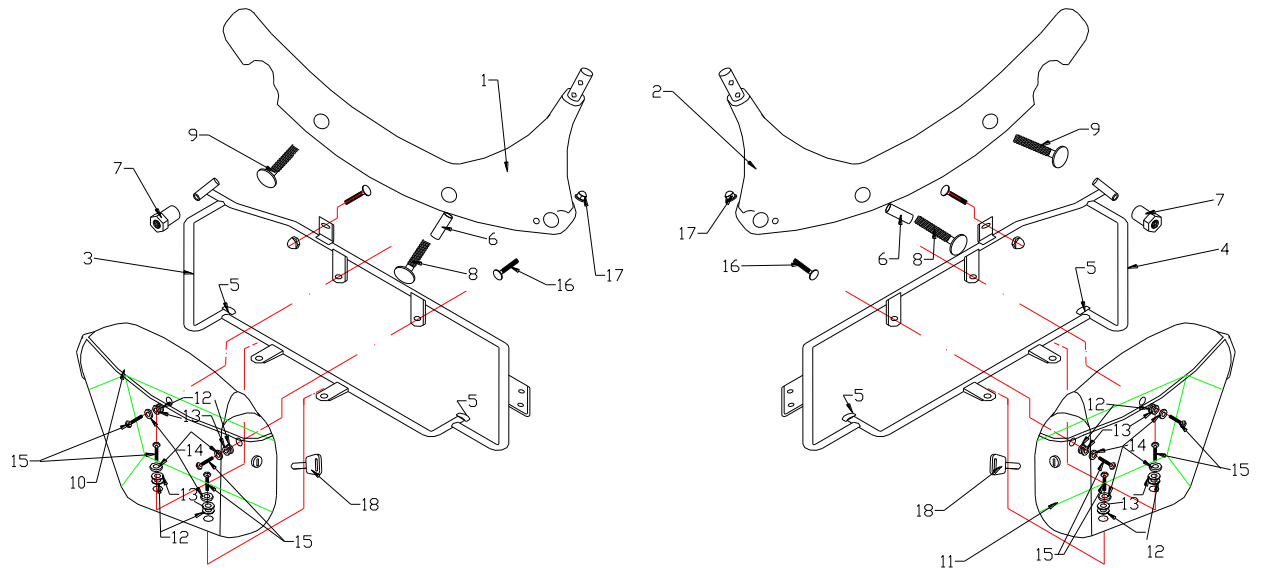
### F-10 HANDLE BAR

REF. NO.	PART NO.	DESCRIPTION	Q.T.Y
1	F1001	Handle Bar	1
2	F1002	Steering Stem Head	2
3	F1003		2
4	F1004		2
5	F1005	Clamp, handle bar	2
6	F1006		4
7	F1007	Grip, clutch	1
8	F1008	Clamp, clutch grip	1
9	F1009		2
10	F1010	Cable, clutch grip	1
11	F1011	Switch, handle LH upper	1
12	F1012	Switch, handle LH lower	1
13	F1013	Spanner, throttle valve	1
14	F1014		2
15	F1015		1
16	F1016	Cable, throttle valve	1
17	F1017	Cable, clutch	30
18	F1018	Grip LH	1
19	F1019	Mirror Assy rear view LH	1
20	F1020	Mirror Assy rear view RH	1
21	F1021	Switch, handle RH upper	1
22	F1022	Switch, handle RH lower	1
23	F1023		1
24	F1024	Cable, tkrottle	1
25	F1025	Grip Camp, throttle	1



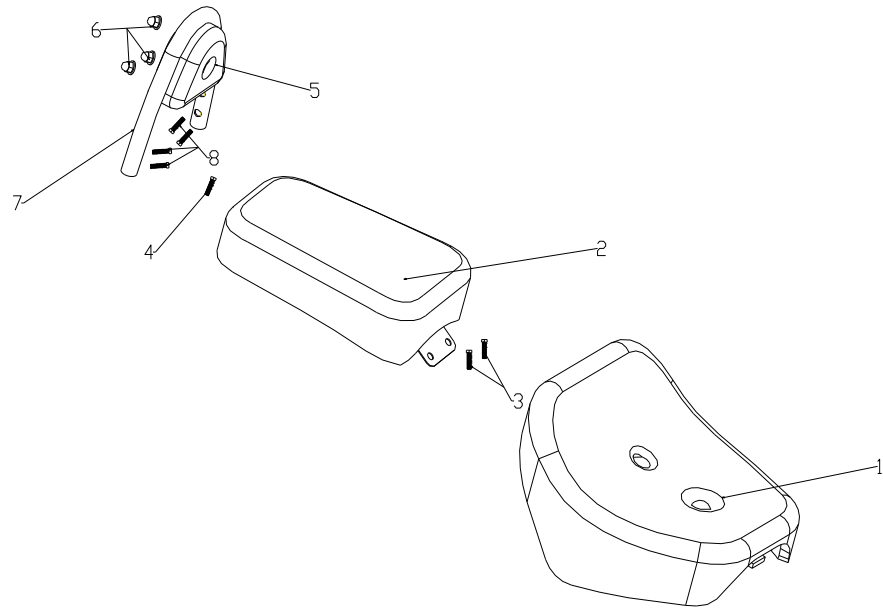
### F-11 REAR ARM SUSPENSION

REF. NO.	PART NO.	DESCRIPTION	Q.T.Y
<b>1</b>	<b>F1101</b>	<b>Swinging Arm</b>	<b>6</b>
2	F1102	Cover, swinging arm shaft	2
3	F1103	Shaft, swinging arm	1
4	F1104		1
5	F1105	Bush	2
6	F1106	Rubber, chain	1
7	F1107	Washer 6	1
8	F1108		1
9	F1109	Scale-plate	2
10	F1110	Torque Link, rear	1
11	F1111	Bolt	1
12	F1112	Bolt	1
13	F1113	Washer 8	2
14	F1114	Spring Washer 8	2
15	F1115	Nut M8	6
16	F1116		2
17	F1117	Adjustor, chain	2
18	F1118	Plate, chain adjustor	2
19	F1119	Absorber, rear	2
20	F1120	Washer 10	2
21	F1121	Washer 12	2
22	F1122		2
23	F1123		2
<b>24</b>	<b>F1124</b>	<b>Chain, 08MB×132</b>	<b>10</b>
25	F1125	Case, chain	1
26	F1126		2



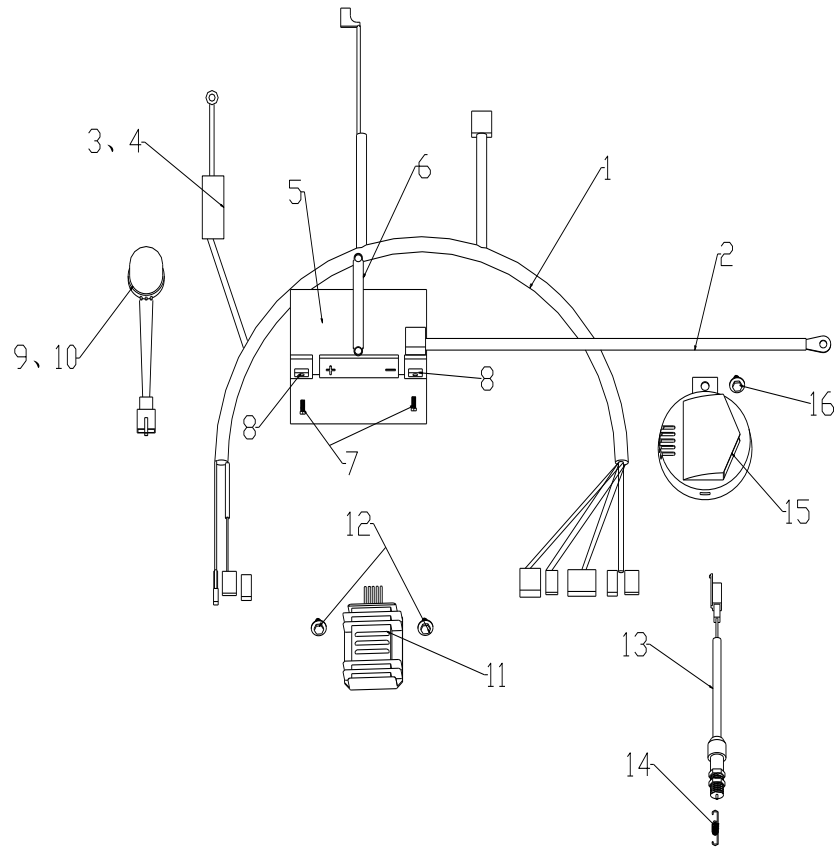
### F-12 REAR GOODS BOX

REF. NO.	PART NO.	DESCRIPTION	Q.T.Y
1	F1201	Holder, back caution LH	1
2	F1202	Holder, back caution RH	1
3	F1203	Holder, goods box LH	1
4	F1204	Holder, goods box RH	1
5	F1205	Cap, rubber	4
6	F1206	Spaler, packing box	2
7	F1207	Front spacer, packing box	2
8	F1208		2
9	F1209		2
10-1	F1210-01	Goods Box LH (SILVER WHITE)	1
10-2	F1210-02	Goods Box LH (JEWEL BLUE)	1
10-3	F1210-03	Goods Box LH (BLACK)	1
10-4	F1210-04	Goods Box LH (CHAMPAGNE GOLD NO.3)	1
10-5	F1210-05	Goods Box LH (SILVER BLUE NO.1)	1
11-1	F1211-01	Goods Box RH (SILVER WHITE)	1
11-2	F1211-02	Goods Box RH (JEWEL BLUE)	1
11-3	F1211-03	Goods Box RH (BLACK)	1
11-4	F1211-04	Goods Box RH (CHAMPAGNE GOLD NO.3)	1
11-5	F1211-05	Goods Box RH (SILVER BLUE NO.1)	1
12	F1212	Rubber Washer	8
13	F1213	Spacer	8
14	F1214	Washer 6	8
15	F1215		8
16	F1216		2
17	F1217	Nut M8	2
18	F1218	Key	2



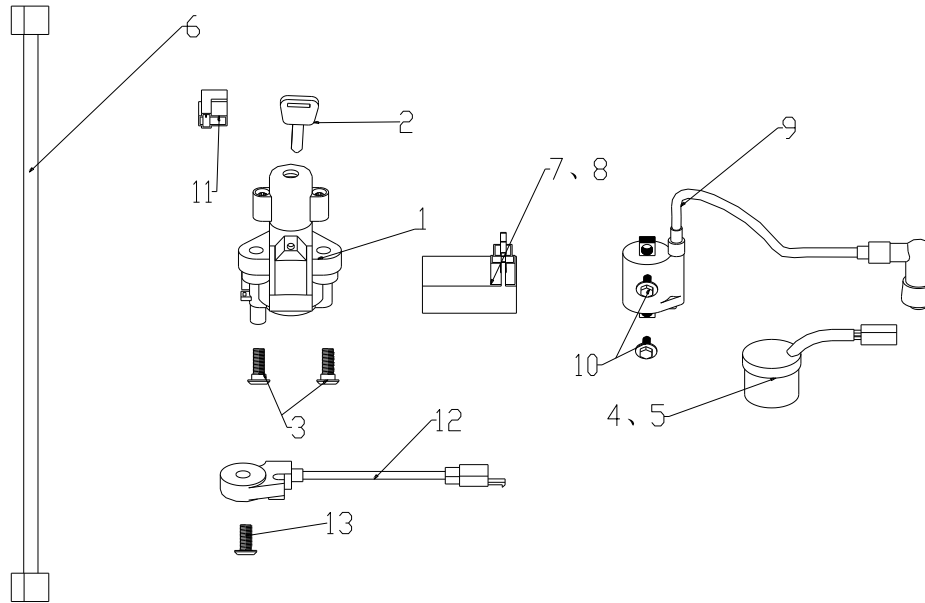
F-13 SEAT

REF. NO.	PART NO.	DESCRIPTION	Q.T.Y
1	F1301	Seat, front	1
2	F1302	Seat, rear	1
3	F1303	Pin M6	1
4	F1304	Pin M6	1
5	F1305	Back Caution, rear	1
6	F1306	Nut M6	3
7	F1307	Holder	1
8	F1308	Pin M6	4



F-14 POWER WIRE

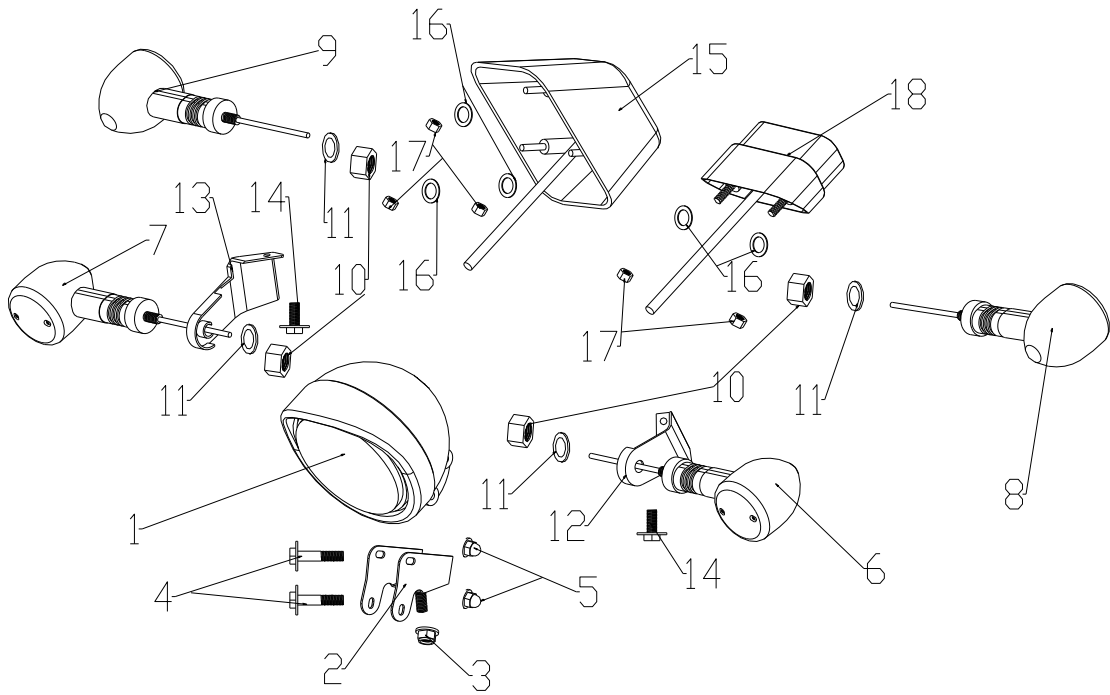
REF. NO.	PART NO.	DESCRIPTION	Q.T.Y
1	F1401	Wire, power	10
2	F1402	Wire, earth	1
3	F1403	Fuse	2
4	F1404	Box, fuse	1
5	F1405	Battery	1
6	F1406	Band, battery	1
7	F1407		2
8	F1408	Nut M6	2
9	F1409	Flasher	1
10	F1410	Housing flasher	1
11	F1411	Rectifier Assy.	10
12	F1412		2
13	F1413	Switch, rear brake	1
14	F1414	Spring, rear brake	1
15	F1415	Horn	1
16	F1416		1



### F-15 IGNITION SYSTEM

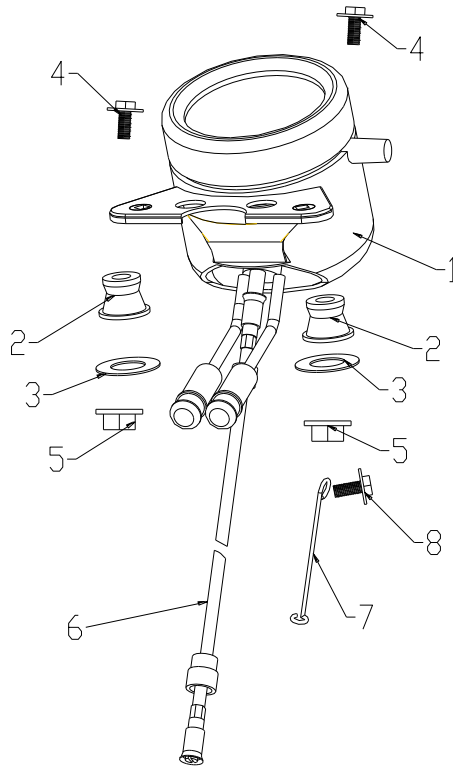
REF. NO.	PART NO.	DESCRIPTION	Q.T.Y
1	F1501	Main switch	1
2	F1502	Key	2
3	F1503	Screw, M3, 20	2
4	F1504	Relay, protection	1
5	F1505	Housing, relay	1
6	F1506	Wire, power	1
7	F1507	CDI unit	10
8	F1508	Housing, CDI unit	1
9	F1509	Coil, ignition	1
10	F1510	Cap, spark plug	2
11	F1511	Z.D	1
12	F1512	Protect switch, side standing	1
13	F1513	Screw, M3, 10	1





### F-16 LIGHTING·LIGHT-SIGNALLING

REF. NO.	PART NO.	DESCRIPTION	Q.T.Y
1	F1601	Head lamp	1
2	F1602	Holder, head lamp	1
3	F1603	Nut M6	1
4	F1604	Washer 10	2
5	F1605	Nut M6	2
6	F1606	Front Direction Light LH	1
7	F1607	Front Direction Light RH	1
8	F1608	Rear Direction Light LH	1
9	F1609	Rear Direction Light RH	1
10	F1610	Washer 6	4
11	F1611	Washer 10	4
12	F1612	Holder,front direction light LH	1
13	F1613	Holder, front direction light RH	1
14	F1614	Washer 10	2
15	F1615	Tail Light	1
16	F1616	Washer 6	5
17	F1617	Nut M6	5
18	F1618	Rear Number-plate Light	1



F-17 SPEEDOMETER

REF. NO.	PART NO.	DESCRIPTION	Q.T.Y
1	F1701	Speedometer	1
2	F1702	Cushion	2
3	F1703	Plain Washer 6	2
4	F1704		2
5	F1705	Nut M6	2
6	F1706	Cable, speedometer	1
7	F1707	Clip, speedometer	1
8	F1708		1