

PARTS CATALOGUE

JL50QT-4 MOTORCYCLE

CIXI KINGRING MOTORCYCLE CO.,LTD.

INDEX

E-1	CRANK CASE.....	1
E-2	CYLINDER HEAD COVER·CYLINDER HEAD	3

E-3	CYLINDER·CRANK CASE·PISTON	5
E-4	RIGHT CRANKCASE COVER	6
E-5	CARBURETOR	7
E-6	DRIVEN PULLEY	8
E-7	STARTINT MOTOR·OIL PUMP	10
E-8	FAN COVER·GENERATOR	11
E-9	TRANSMISSION.....	12
F-1	HEADLIGHT	13
F-2	SPEEDOMETER	14
F-3	HANDLE STEERING	15
F-4	FRONT BRAKE ASSY.....	18
F-5	FRONT FORK·FLOOR PANEL	19
F-6	FRONT FORK WHEEL	22
F-7	FRONT WHEEL	23
F-8	REAR WHEEL	24
F-9	SEAT	25
F-10	FUEL TANK	26
F-11	BATTERY	27
F-12	BODY COVER·LUGGAGE BOX.....	28
F-13	AIR CLEANER.....	31
F-14	EXHAUST MUFFLER	32
F-15	KICK START ARM·STAND	33
F-16	REAR CUSHION	34
F-17	TALL LIGHT·POSLTION LIGHT	35
F-18	TAIL LIGHT	36
F-19	WIRE HARNESS	37

Address: Kingring Development Zone, Cixi City, Zhejiang, P.R.China

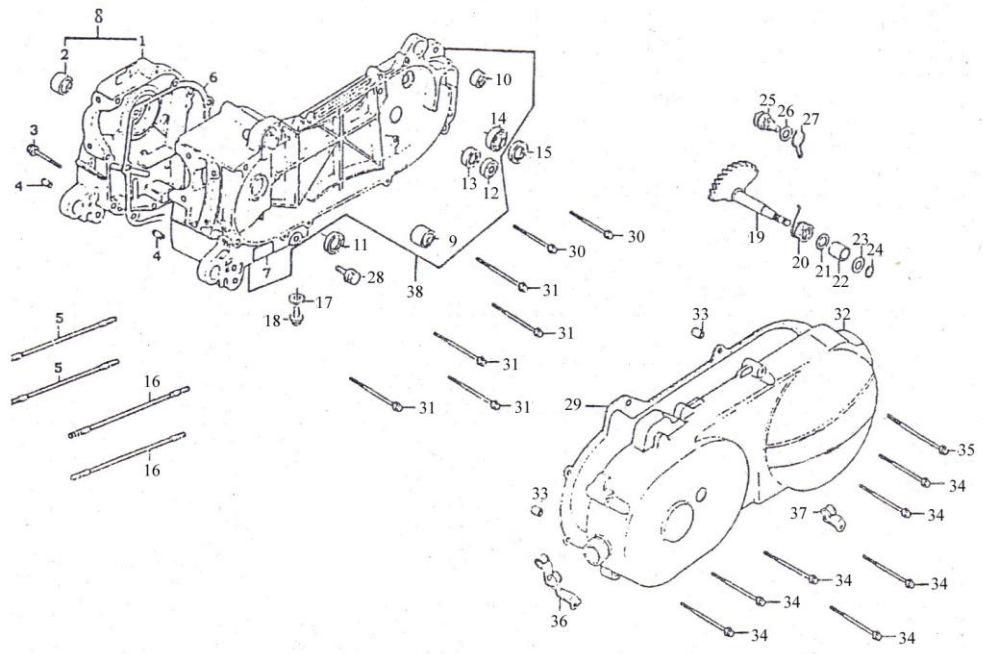
Tel: 86-574-63218692

Fax: 86-574-63218193

Code: 315301

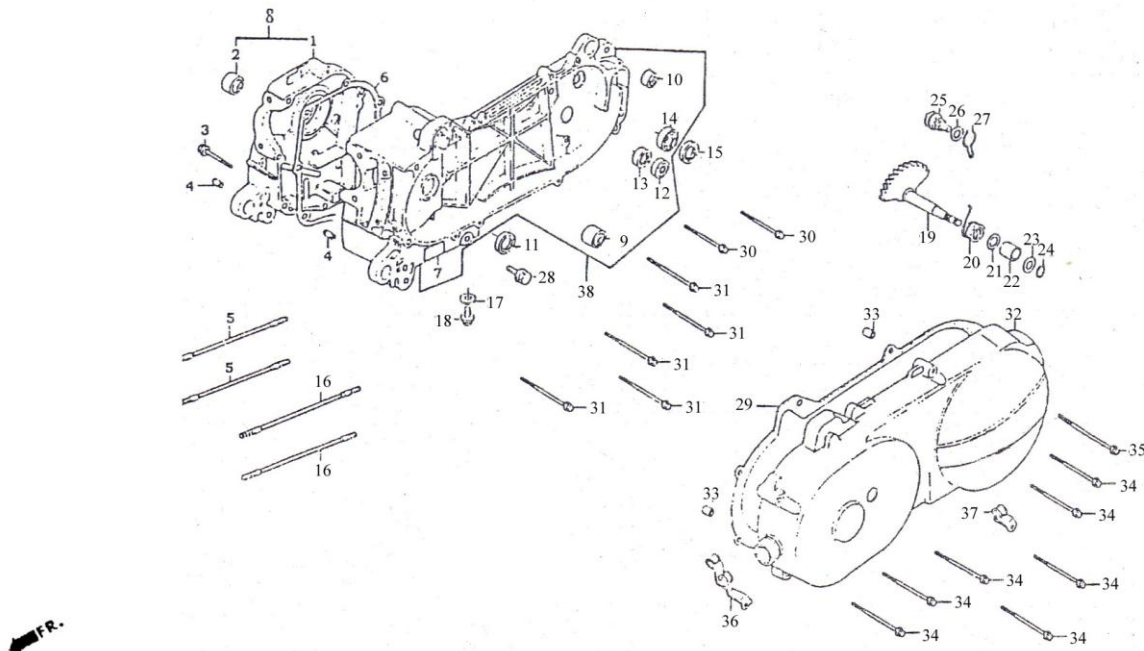
Http: www.kingringmotor.com

Email: motor@kingring.com



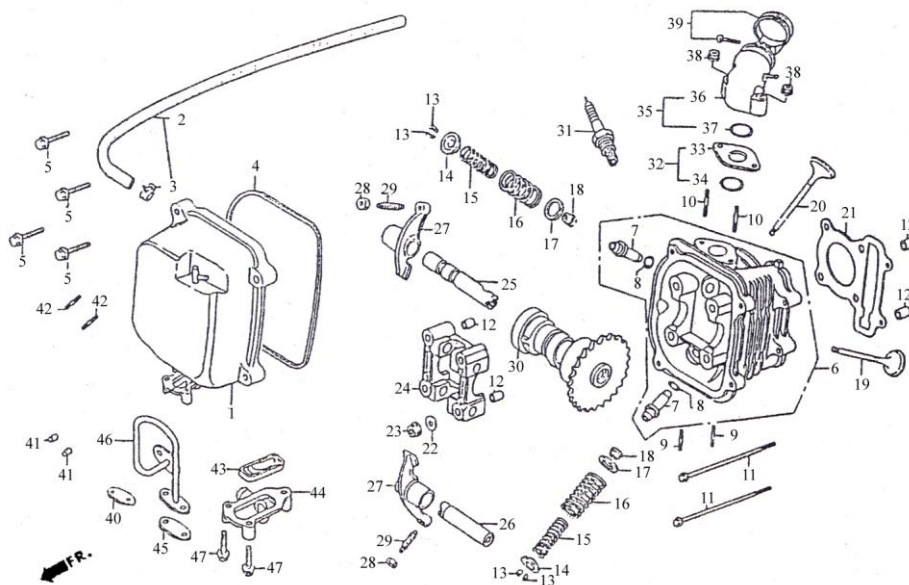
E-1 Crank case

REF.NO.	PART NO.	DESCRIPTION	Q.T.Y
1	E0101	CRANK CASE COMP RIGHT	1
2	E0102	RUB BUSH ENG HANGER	1
3	E0103	BOLT FLANGE SH M6×45	1
4	E0104	DOWEL PIN M8×14	2
5	E0105	BOLT STUD M7×168	2
6	E0106	GASTER CRANK CASE	1
7	E0107	CRANK CASE CIMP LEFT	1
8	E0108	CASE SET R CRANK	1
9	E0109	RUB BUSH ENG HANGER	1
10	E0110	UNDER RUBBER BUSH RR CUSHION	1
11	E0111	OIL SEAL 19.8×30×5	1
12	E0112	BEARING BALL RADIAL 6203	1
13	E0113	BRG BALL RADIAL 6201	1
14	E0114	BRG BALL RADIAL 6203	1
15	E0115	OIL SEAL 17×30×6	1
16	E0116	BOLT STUD 7×176	2
17	E0117	WASHER 8	1
18	E0118	BOLT OIL DRAIN	1
19	E0119	SPINDLE COMP KICK STARTER	1
20	E0120	SPRING KICK RETURN	1
21	E0121	COLLAR KICK BOSS	1
22	E0122	BUSH KICK SPINDLE	1
23	E0123	WASHER KICK SPINDLE	1
24	E0124	CIRCLIP EX 14	1



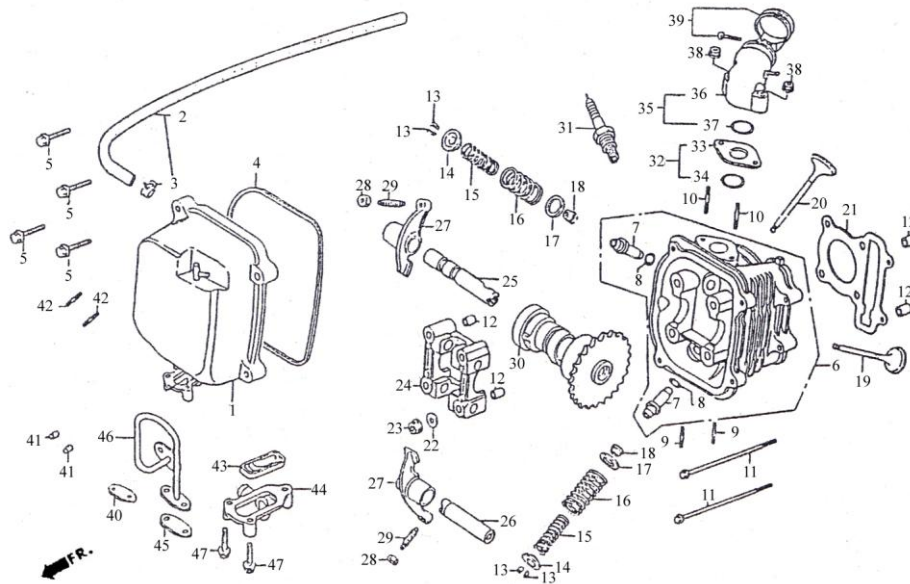
E-1 Crank case

REF.NO.	PART NO.	DESCRIPTION	Q.T.Y
25	E0125	GEAR COMP KICK DRIVEN	1
26	E0126	WASHER THRUST 10	1
27	E0127	SPG KICK DRIVEN GEAR	1
28	E0128	BOLT ASSY DRAIN PLUG	1
29	E0129	GASKET L COVER	1
30	E0130	BOLT FLANGE 8×35	2
31	E0131	BOLT FLANGE 8×40	5
32	E0132	COVER COMP L SIDE	1
33	E0133	DOWEL PIN 8×14	2
34	E0134	BOLT FLANGE 6×35	7
35	E0135	BOLT SPECIAL 8	1
36	E0136	CLAMPER THROTTLE CABLE	1
37	E0137	CLAMPER BRAKE CABLE	1
38	E0138	CRANK CASE SETL	1



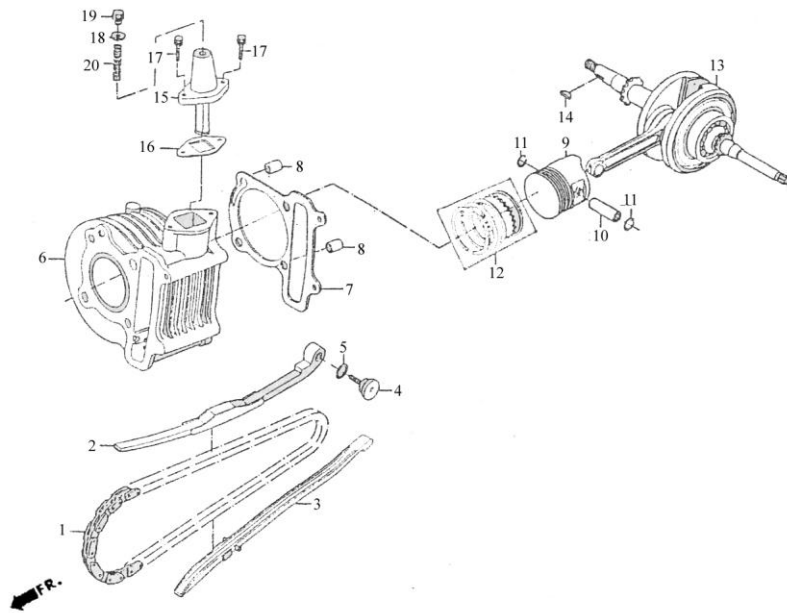
E-2 Cylinder Head Cover-Cylinder Head

REF.NO.	PART NO.	DESCRIPTION	Q.T.Y
1	E0201	COVER COMP HEAD	1
2	E0202	TUBE BREATHER	1
3	E0203	CLIP B8 TUBE	1
4	E0204	GASKET HEAD COVER	1
5	E0205	BOLT FLANGE SH 6X25	4
6	E0206	HEAD COMP CYLN	1
7	E0207	GUIDE VALVE	2
8	E0208	O-RING 9X1.6	2
9	E0209	BOLT STUD 6X32	2
10	E0210	BOLT STUD II 6X50	2
11	E0211	BOLT FLANGE 6X85	2
12	E0212	PIN DOWEL SPECIAL 8X14	4
13	E0213	COTTER VALVE	4
14	E0214	RETAINER VALVE SPRING	2
15	E0215	SPG VALVE INNER	2
16	E0216	SPRING VALVE OUTER	2
17	E0217	SEAT VALVE SPG OUTER	2
18	E0218	SEAT VALVE STEM	2
19	E0219	VALVE EXHAUST	1
20	E0220	VALVE INLET	1
21	E0221	GASKET CYLINDER HEAD	1
22	E0222	WASHER SERALING 7MM	4
23	E0223	NUT FLANGE 7M/M	4
24	E0224	HOLDER CAM SHAFT	1
25	E0225	SHAFT COMP IN ROCKER ARM	1



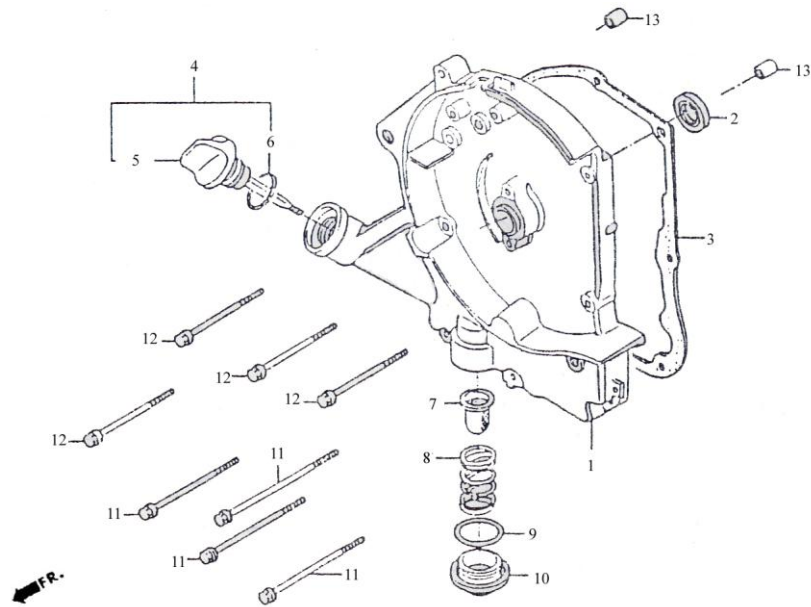
E-2 Cylinder Head Cover-Cylinder Head

REF.NO.	PART NO.	DESCRIPTION	Q.T.Y
26	E0226	SHAFTEXH ROCKER ARM	1
27	E0227	ARM VALVE ROCKER	2
28	E0228	NUT TAPPET ADJG	2
29	E0229	SCREW TAPPET ADJUSTING	2
30	E0230	SHAFT COMP CAM	1
31	E0231	SPARK PLUG(C7HSA)	1
32	E0232	INSULATOR CARB ASSY	1
33	E0233	INSULATOR CARB	1
34	E0234	O-RING 20.6X1.9	1
35	E0235	PIPE ASSY INLET	1
36	E0236	PIPE COMP INLET	1
37	E0237	O-RING 20.6X1.9	1
38	E0238	NUT FLANGE 6MM	2
39	E0239	BAND INSULATOR	1
40	E0240	GAKT A/IPPIPE	1
41	E0241	NUT HEX CAP 6MM	2
42	E0242	BOLT STUD 6X16	2
43	E0243	REED VALVE COMP	1
44	E0244	COVER REED VALVE	1
45	E0245	GAKT A/I PIPE	1
46	E0246	PIPE COMP AIR	1
47	E0247	BOLT FLANGER 6X40	2



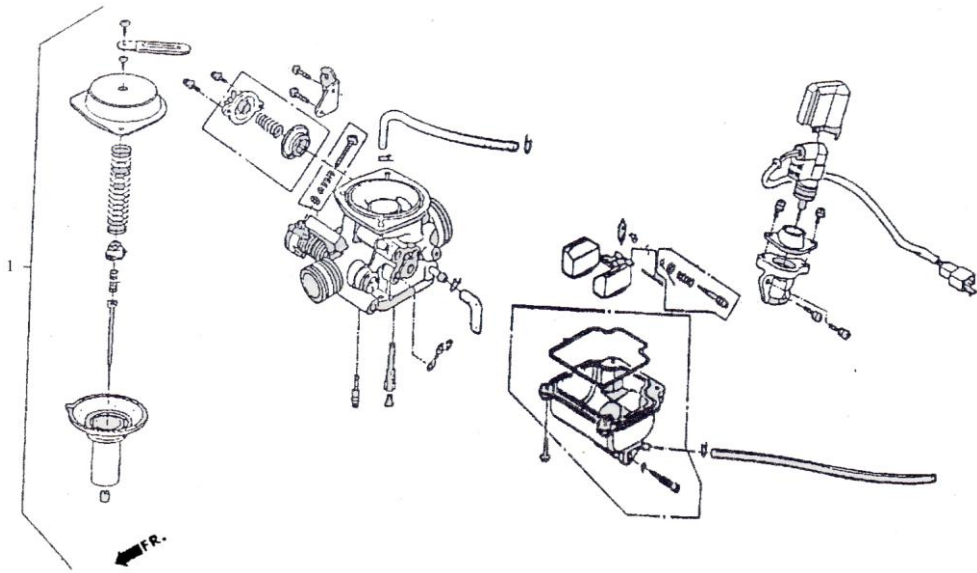
E-3 Cylinder·Crankcase·Piston

REF.NO.	PART NO.	DESCRIPTION	Q.T.Y
1	E0301	CHAIN CAM	1
2	E0302	TENSIONER CAM CHAIN	1
3	E0303	GUIDE COMP CAM CHAIN	1
4	E0304	PIVOT CAM CHAIN TENSIONER	1
5	.E0305	O-RING 15.5-1.5	1
6	E0306	CYLINDER COMP	1
7	E0307	GASKET CYLINDER	1
8	E0308	PIN DOWEL SPECIAL 8X14	2
9	E0309	PISTON	1
10	E0310	PIN PISTON	1
11	E0311	PISTON PIN CLIF	2
12	E0312	RING SET PISTON	1
13	E0313	CRANK SHAFT COMP	1
14	.E0314	KEY WOODRUFF	1
15	E0315	ADJUSTER CAM CHAIN	1
16	E0316	GASKET CAM CHAIN	1
17	E0317	BOLT FLANGE 6X18	2
18	E0318	WASHER SEALING 8X16X1.6	1
19	E0319	PLUG ADJUSTER	1
20	E0320	SPRING CAM CHAIN ADJUSTER	1



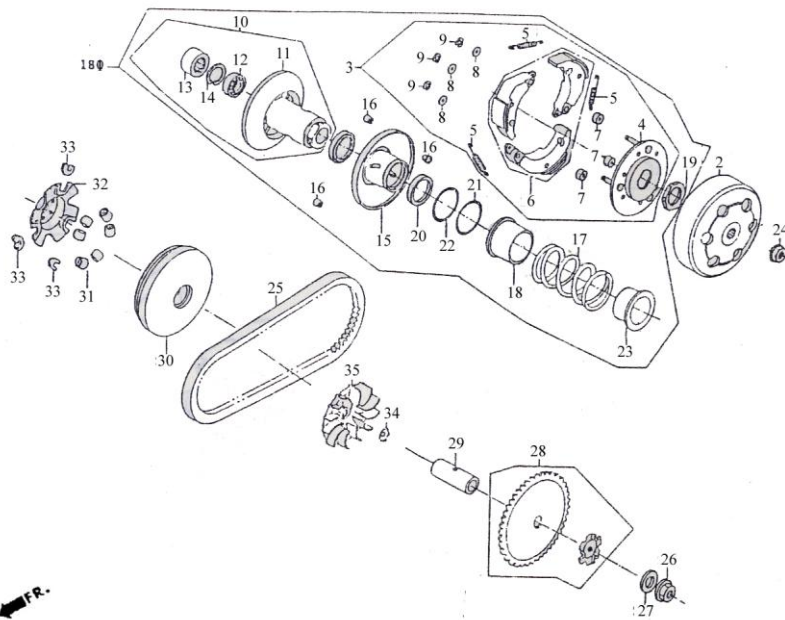
E-4 Right Crankcase Cover

REF.NO.	PART NO.	DESCRIPTION	Q.T.Y
1	E0401	COVER R CRANK CASE	1
2	E0402	OIL SEAL 16.4X30X5	1
3	E0403	GASTER R COVER	1
4	E0404	GAUGE OIL LEVEL ASSY	1
5	E0405	GAUGE OIL LEVEL	1
6	E0406	O-RING 18X3	1
7	E0407	SCREEN OIL FILTER	1
8	E0408	SPG OIL FILTER SCREEN	1
9	E0409	O-RING 30.8M/M	1
10	E0410	HOLE CAP TAPPET ADJUSTING	1
11	E0411	BOLT FLANGE SH M6X100	4
12	E0412	BOLT FLANGE M6X85	4
13	E0413	DOWEL PIN 8X14	2



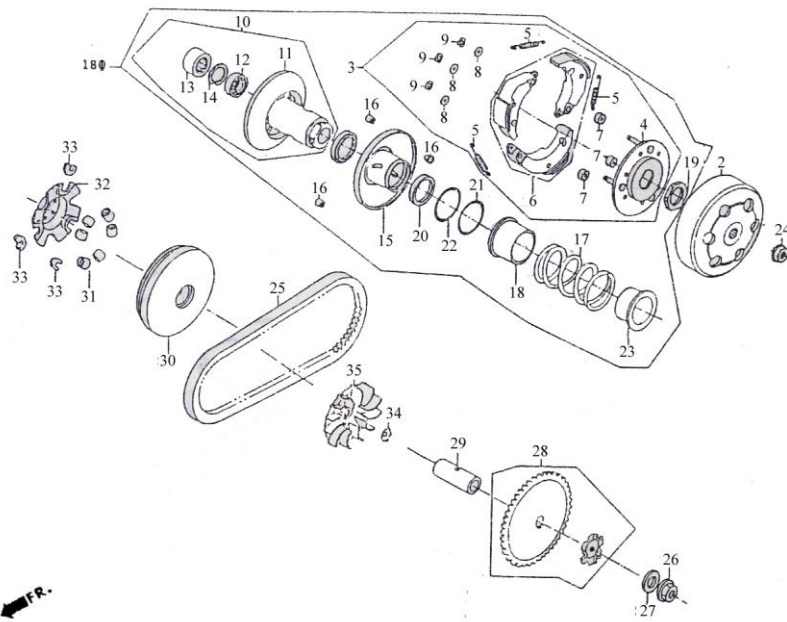
E-5 Carburetor

REF.NO.	PART NO.	DESCRIPTION	Q.T.Y
1	E0501	CARBURETOR ASSY	1



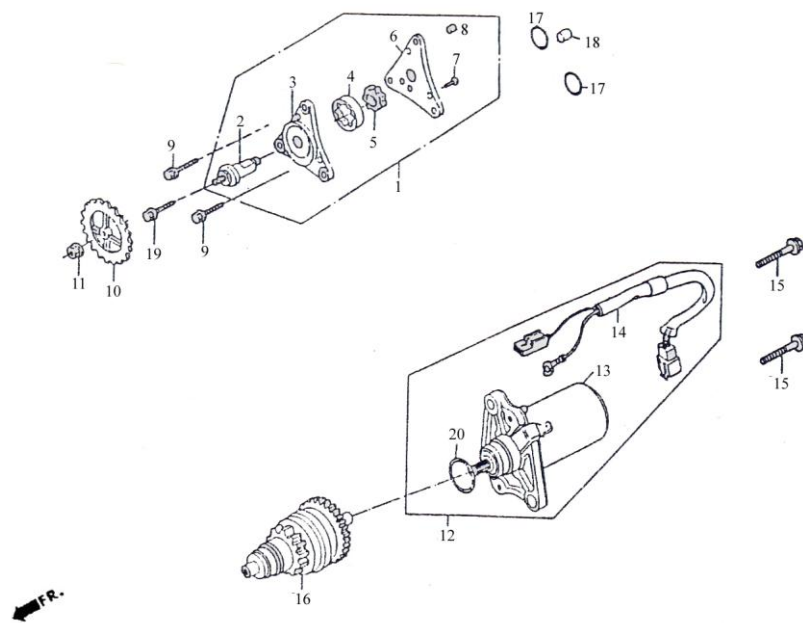
E-6 Driven Pulley

REF.NO.	PART NO.	DESCRIPTION	Q.T.Y
1	E0601	PLATE SUB ASSY DRIVE	1
2	E0602	CLUTCH OUTER	1
3	E0603	PLATE ASSY DRIVE	1
4	E0604	PLATE COMP DRIVE	1
5	E0605	SPRING CLUTCH	3
6	E0606	WEIGHT SET CLUTCH	1
7	E0607	RUBBER CLUTCH DUMPER	3
8	E0608	6M/M THRUST WASHER	3
9	E0609	CIRCLIP 6MM	3
10	E0610	FACE ASSY DRIVEN	1
11	E0611	FACE COMP DRIVEN H1	1
12	E0612	BRG RADIAL BALL 6901U	1
13	E0613	BRG NEEDLE 17X25X18WS	1
14	E0614	CIRCLIP IN 24	1
15	E0615	FACE COMP MOVABLE DRIVEN	1
16	E0616	PIN GUIDE	3
17	E0617	SPG DRIVEN FACE	1
18	E0618	COLLAR SEAL	1
19	E0619	NUT SPECIAL 28MM	1
20	E0620	OIL SEAL 34X39X3	2
21	E0621	O-RING 36X1.5	1
22	E0622	O-RING 39.2X2.2	1
23	E0623	COLLAR SPG	1
24	E0624	NUT FLANGE 10MM	1
25	E0625	BELT DRIVE	1



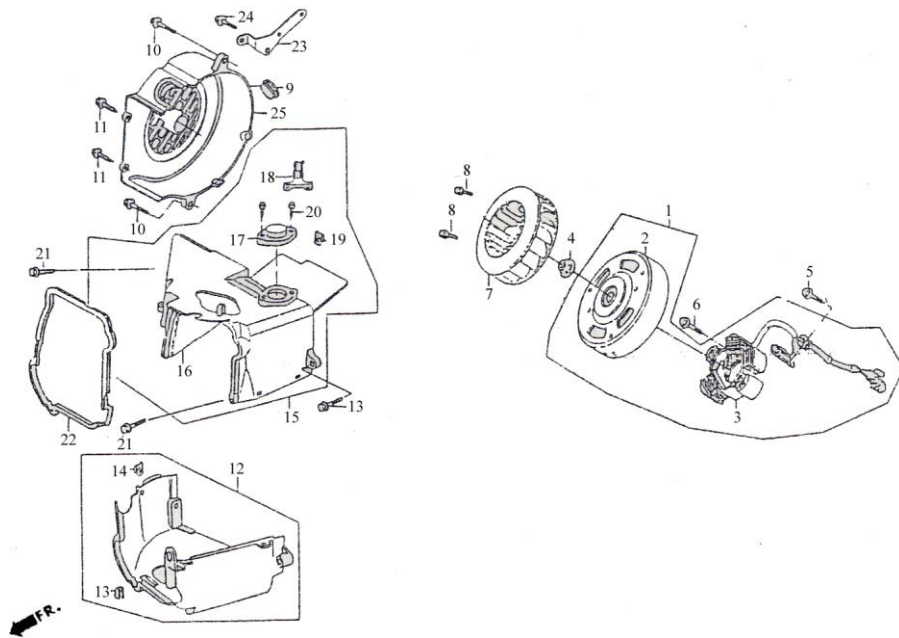
E-6 Driven Pulley

REF.NO.	PART NO.	DESCRIPTION	Q.T.Y
26	E0626	NUT HEX 12MM	1
27	E0627	WASHER SPECIAL 12MM	1
28	E0628	FACE DRIVE	1
29	E0629	BOSS DRIVE FACE	1
30	E0630	FACE COMP MOVABLE DRIVE	1
31	E0631	ROLLER COMP WEIGHT 6.5gr	6
32	E0632	PLATE RAMP	1
33	E0633	PIECE SLIDE	3
34	E0634	RATCHET KICK STARTER	1
35	E0635	FAN CVT COOLING	1



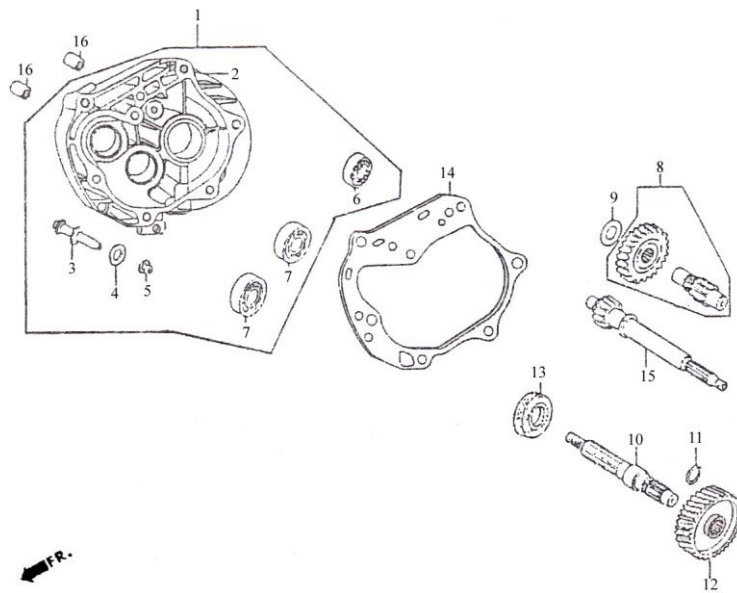
E-7 Starting Motor-Oil Pump

REF.NO.	PART NO.	DESCRIPTION	Q.T.Y
1	E0701	PUMP ASSY OIL	1
2	E0702	SHAFT OIL PUMP	1
3	E0703	BODY OIL PUMP	1
4	E0704	ROTOR OIL PUMP OUTER	1
5	E0705	ROTER OIL PUMP INNER	1
6	E0706	PLATE OIL PUMP	1
7	E0707	SCREW 4X10	3
8	E0708	DOWEL PIN 4X6.5	1
9	E0709	BOLT FLANGE SH 6X20	2
10	E0710	GEAR OIL PUMP DRIVEN	1
11	E0711	NUT FLANGE 6MM	1
12	E0712	MOTOR ASSY START	1
13	E0713	MOTOR UNIT START	1
14	E0714	SUB HARNESS	1
15	E0715	BOLT FLANGE SH 6X25	2
16	E0716	PINION ASSY STARTER	1
17	E0717	O-RING 9X1.6	2
18	E0718	PIN DOWELL 8X10	1
19	E0719	BOLT FLANGE SH 6X25	1
20	E0720	O-RING	1



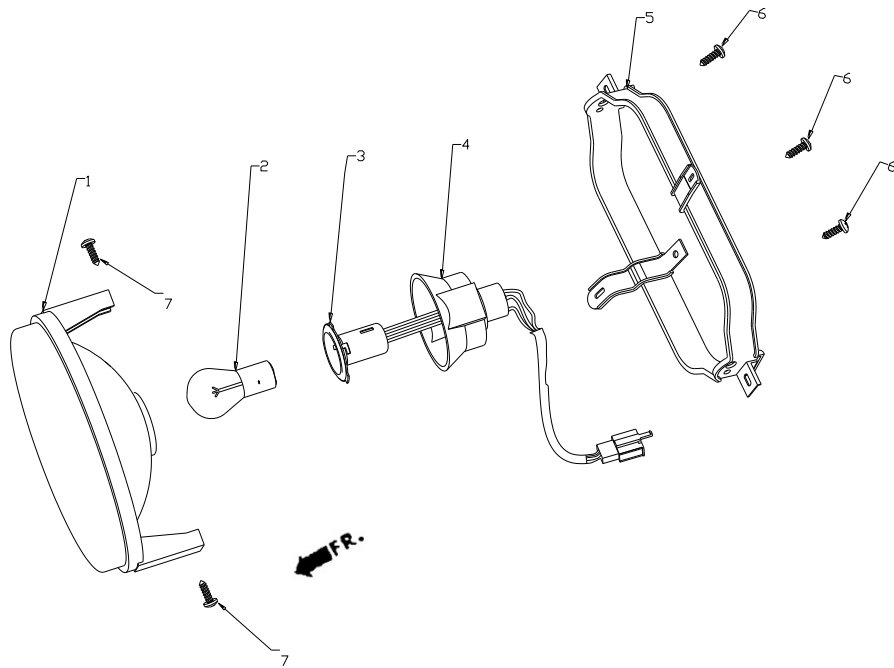
E-8 Fan Cover Generator

REF.NO.	PART NO.	DESCRIPTION	Q.T.Y
1	E0801	AC GEN ASSY	1
2	E0802	FLYWHEEL COMP	1
3	E0803	STATOR COMP	1
4	E0804	NUT FLANGE 10MM	1
5	E0805	BOLT HEX 5X12	2
6	E0806	BOLT FLANGE SH 6X22	2
7	E0807	FAN COMP COOLING	1
8	E0808	BOLT FLANGE SH 6X18	4
9	E0809	GROM B SIDE PNL	1
10	E0810	BOLT FLANGE SH 6X25	3
11	E0811	SCREW TAPPING 5X16	2
12	E0812	SHROUD ASSY A	1
13	E0813	SHROUD COMP A	1
14	E0814	NUT CLIP 6MM	2
15	E0815	SHROUD ASSY B	1
16	E0816	SHROUD COMP B	1
17	E0817	BOX TENSIONER LIFTER	1
18	E0818	CLIP VACUUM TUBE	1
19	E0819	NUT CLIP 6MM	1
20	E0820	SCREW TAPPING 4X12	2
21	E0821	BOLT FLANG SH 6X16	2
22	E0822	SEAL SHROUD	1
23	E0823	STAY FENDER	1
24	E0824	BILT FLANGE SH 6X12	1
25	E0825	COVER ASSY FAN	1



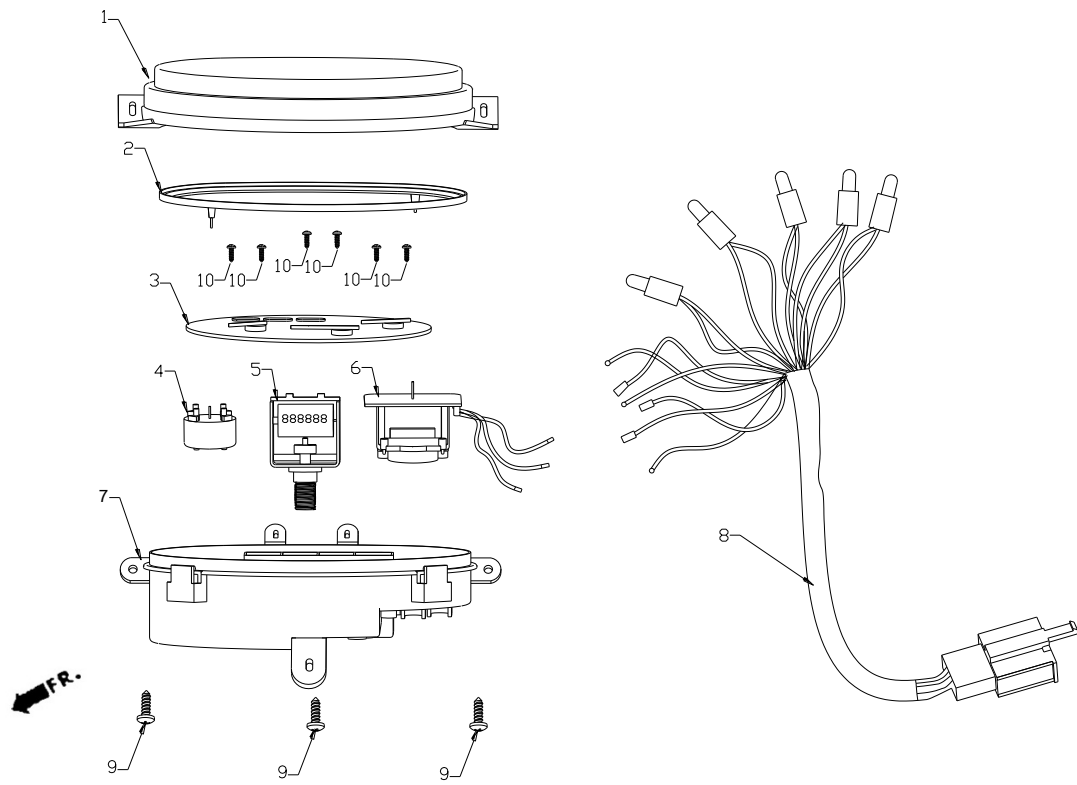
E-9 Transmission

REF.NO.	PART NO.	DESCRIPTION	Q.T.Y
1	E0901	CASE SET MISSION	1
2	E0902	MISSION CASE BODY	1
3	E0903	PIN BRAKE SHOE ANCHOR	1
4	E0904	O RING 7.5X1.5	1
5	E0905	NUT FLANGE M8	1
6	E0906	BRG BALL RAKIAL 6004UU	1
7	E0907	BRG BALL RADIAL 6201	2
8	E0908	SHAFT COMP COUNTER	1
9	E0909	WASHER SIDE 12MM	1
10	E0910	SHAFT FINAL	1
11	E0911	CIRCLIP EX 20	1
12	E0912	GEAR FINAL	1
13	E0913	OIL SEAL 27X42X7	1
14	E0914	GASKET MISSION CASE	1
15	E0915	SHAFT DRIVE	1
16	E0916	DOWEL PIN 10X20	2



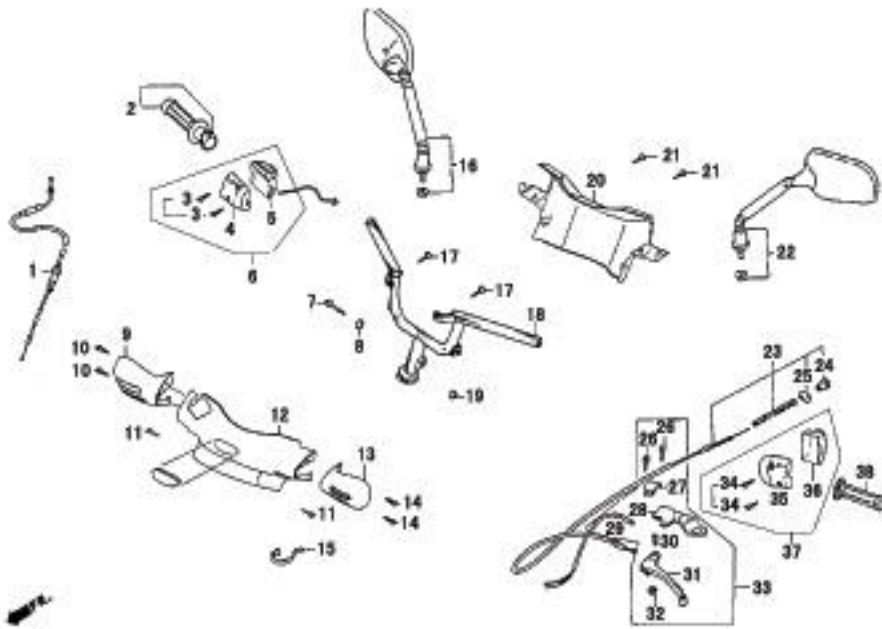
F-1 Head Light

REF.NO.	PART NO.	DESCRIPTION	Q.T.Y
1	F0101	LENS COMP	1
2	F0102	BULB	1
3	F0103	CAP SOCKET	1
4	F0104	CAP SOCKET	1
5	F0105	BRACKET HEAD LAMP	1
6	F0106	SCREW ST 4.8X13	3
7	F0107	BOLT M5X12	2



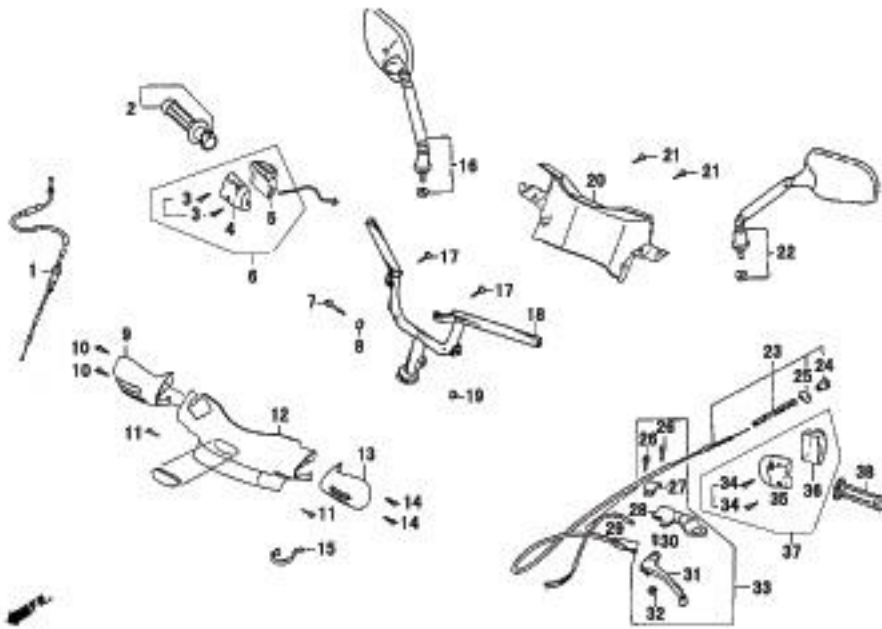
F-2 Speedometer

REF.NO.	PART NO.	DESCRIPTION	Q.T.Y
1	F0201	LENS	1
2	F0202	HOLDER SPEEDOMETER	1
3	F0203	SPEEDOMETER	1
4	F0204	COIL COMP OIL METER	1
5	F0205	TRANSMISSION COMP SPEEDOMETER	1
6	F0206	COIL COMP TACHOMETER	1
7	F0207	CASE ASSY	1
8	F0208	SOCKET COMP METER	1
9	F0209	SCREW ST 4.8X16	3
10	F0210	BOLT 2.5X5	6



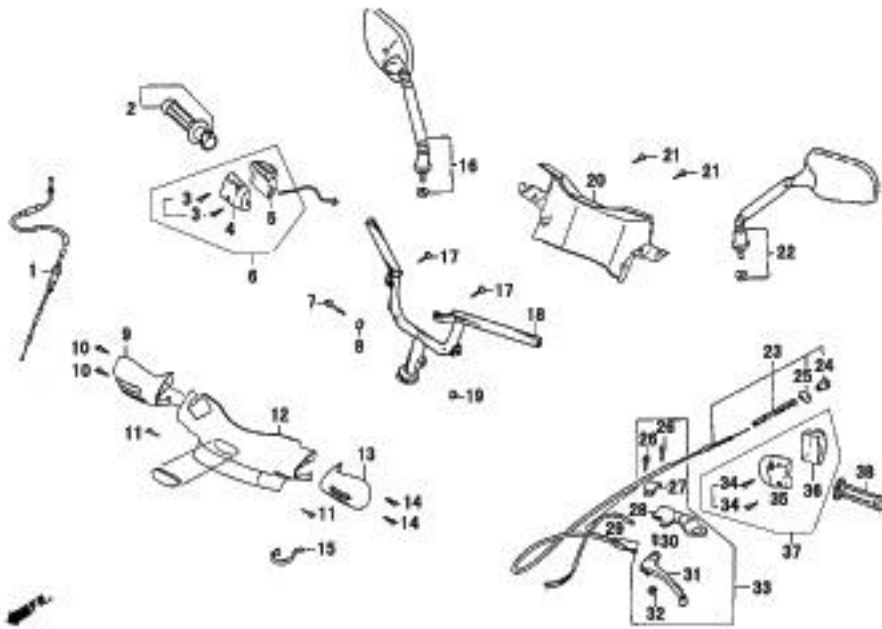
F-3 Handle Steering

REF.NO.	PART NO.	DESCRIPTION	Q.T.Y
1	F0301	CABLE ASSY THRATTLE	1
2	F0302	GRIP ASSY THRATTLE	1
3	F0303	SCREW M5X25	2
4	F0304	HOLDER SWITCH ASSY RH	1
5	F0305	HOLDER SWITCH ASSY RH	1
6	F0306	SWITCH ASSY RH HANDLE COMP	1
7	F0307	BOLT M10X40	1
8	F0308	GASKET 10	1
9-1	F0309-01	COVER HANDLE RH (SILVER WHITE)	1
9-2	F0309-02	COVER HANDLE RH (GINGKO-BLUE)	1
9-3	F0309-03	COVER HANDLE RH (BLACK)	1
9-4	F0309-04	COVER HANDLE RH (DARK GREEN DOUBLE COLOR)	1
9-5	F0309-05	COVER HANDLE RH (JEWEL BLUE DOUBLE COLOR)	1
9-6	F0309-06	COVER HANDLE RH (DARK RED DOUBLE COLOR)	1
9-7	F0309-07	COVER HANDLE RH (BLACK DOUBLE COLOR)	1
9-8	F0309-08	COVER HANDLE RH (GREY DOUBLE COLOR)	1
10	F0310	SCREW ST3.9X12	2
11	F0311	BOLT M6X14	2
12-1	F0312-01	COVER HANDLE FR (SILVER WHITE)	1
12-2	F0312-02	COVER HANDLE FR (GINGKO-BLUE)	1
12-3	F0312-03	COVER HANDLE FR (BLACK)	1
12-4	F0312-04	COVER HANDLE FR (DARK GREEN DOUBLE COLOR)	1
12-5	F0312-05	COVER HANDLE FR (JEWEL BLUE DOUBLE COLOR)	1
12-6	F0312-06	COVER HANDLE FR (DARK RED DOUBLE COLOR)	1
12-7	F0312-07	COVER HANDLE FR (BLACK DOUBLE COLOR)	1



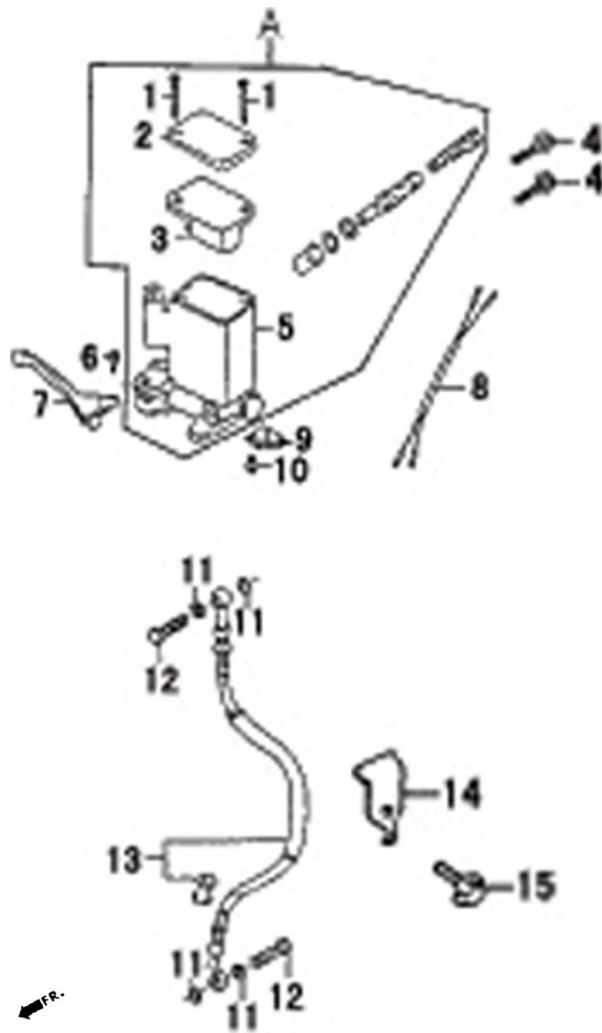
F-3 Handle Steering

REF.NO.	PART NO.	DESCRIPTION	Q.T.Y
12-8	F0312-08	COVER HANDLE FR (GREY DOUBLE COLOR)	1
13-1	F0313-01	COVER HANDLE LH (SILVER WHITE)	1
13-2	F0313-02	COVER HANDLE LH (GINGKO-BLUE)	1
13-3	F0313-03	COVER HANDLE LH (BLACK)	1
13-4	F0313-04	COVER HANDLE LH (DARK GREEN DOUBLE COLOR)	1
13-5	F0313-05	COVER HANDLE LH (JEWEL BLUE DOUBLE COLOR)	1
13-6	F0313-06	COVER HANDLE LH (DARK RED DOUBLE COLOR)	1
13-7	F0313-07	COVER HANDLE LH (BLACK DOUBLE COLOR)	1
13-8	F0313-08	COVER HANDLE LH (GREY DOUBLE COLOR)	1
14	F0314	SCREW ST3.9X12	2
15	F0315	CLAMPER	1
16	F0316	MIRROR ASSY R BACK	1
17	F0317	SCREW ST3.9X12	2
18	F0318	HANDLE BAR	1
19	F0319	NUT M10	1
20	F0320	COVER HANDLE RR	1
21	F0321	SCREW ST4.2X12	2
22	F0322	MIRROR ASSY L BACK	1
23	F0323	CABLE ASSY REAR BRAKE	1
24	F0324	NUT	1
25	F0325	PIN	1
26	F0326	BOLT M6X25	2
27	F0327	UPPER BRACKET REAR BRAKE LEVER	1
28	F0328	LOWER BRACKET REAR BRAKE LEVER	1
29	F0329	SWITCH REAR BRAKE	1



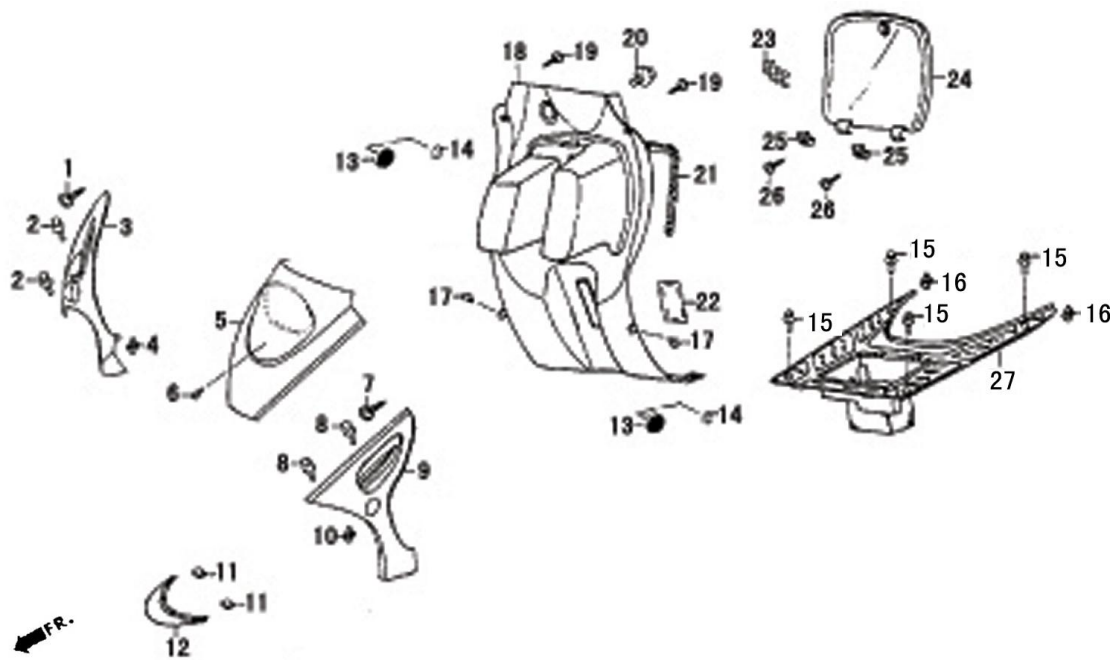
F-3 Handle Steering

REF.NO.	PART NO.	DESCRIPTION	Q.T.Y
30	F0330	SCREW	1
31	F0331	LEVER	1
32	F0332	NUT	1
33	F0333	BRAKE LEVER ASSY REAR	1
34	F0334	SCREW M5X25	2
35	F0335	HOLDER SWITCH ASSY LH	1
36	F0336	HOLDER SWITCH ASSY LH	1
37	F0337	SWITCH ASSY LH HANDLE COMP	1
38	F0338	GRIP ASSY L HANDLE	1



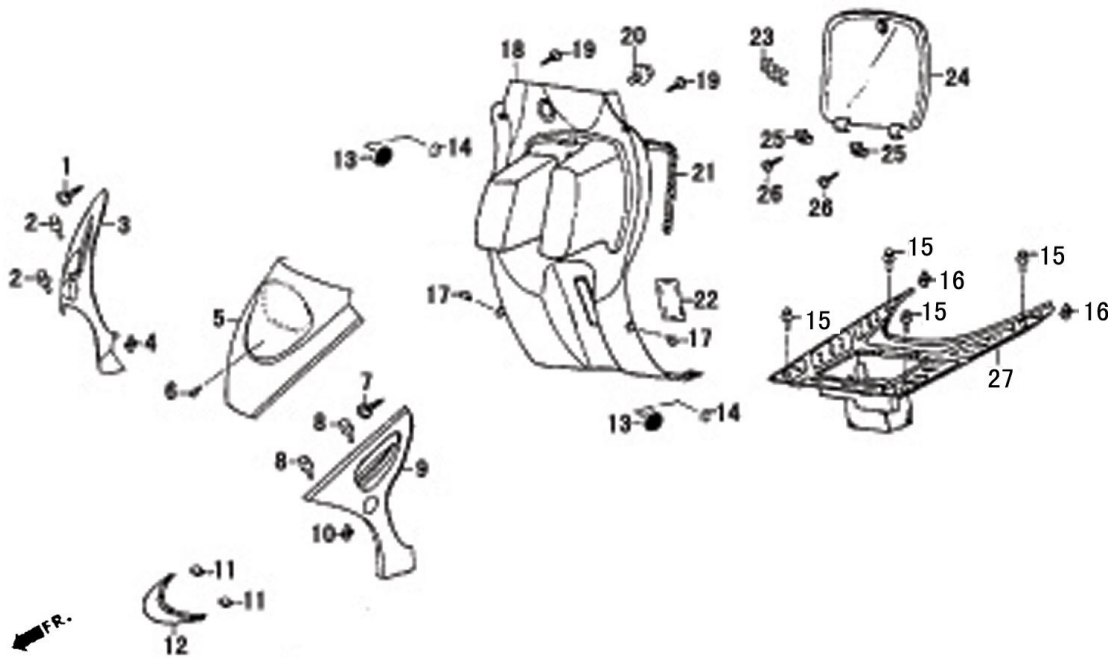
F-4 Front Brake Assy.

REF.NO.	PART NO.	DESCRIPTION	Q.T.Y
A	F04A	BRAKE MASTER CYLINDER ASSY	1
1	F0401	SCREW M4X12	2
2	F0402	CAP	1
3	F0403	DIAPHRAGM	1
4	F0404	BOLT M6X22	2
5	F0405	BODY MASTER CYLINDER	1
6	F0406	SCREW	1
7	F0407	LEVER BRAKE FR	1
8	F0408	LABLE BRAKE SWITCH	1
9	F0409	SWITCH BRAKE FR	1
10	F0410	SCREW M4X12	1
11	F0411	WASHER	4
12	F0412	BOLT M10X22	2
13	F0413	BRAKE HOSE ASSY	1
14	F0414	CLAMP BRAKE HOSE	1
15	F0415	BOLT M6X12	1



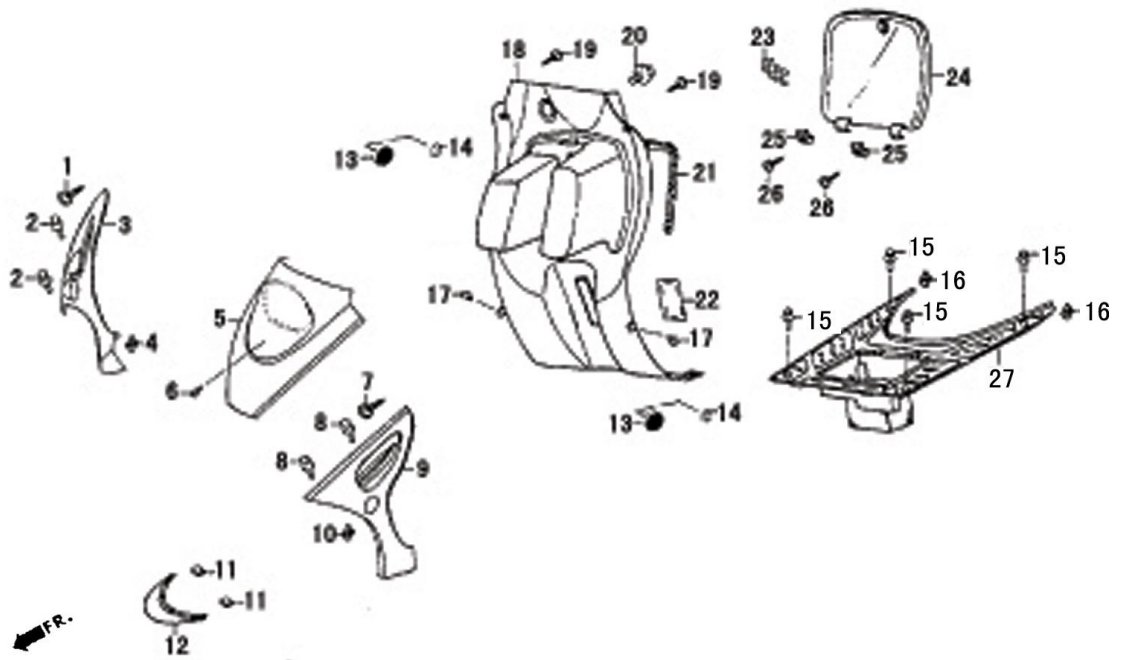
F-5 Front Fork Floor Panel

REF.NO.	PART NO.	DESCRIPTION	Q.T.Y
1	F0501	SCREW ST 3.9X12	1
2	F0502	NUT M6X12	2
3-1	F0503-01	SIDE MOLD RH (SILVER WHITE)	1
3-2	F0503-02	SIDE MOLD RH (GINGKO-BLUE)	1
3-3	F0503-03	SIDE MOLD RH (BLACK)	1
3-4	F0503-04	SIDE MOLD RH (DARK GREEN DOUBLE COLOR)	1
3-5	F0503-05	SIDE MOLD RH (JEWEL BLUE DOUBLE COLOR)	1
3-6	F0503-06	SIDE MOLD RH (DARK RED DOUBLE COLOR)	1
3-7	F0503-07	SIDE MOLD RH (BLACK DOUBLE COLOR)	1
3-8	F0503-08	SIDE MOLD RH (GREY DOUBLE COLOR)	1
4	F0504	NUT CLIP	1
5-1	F0505-01	COVER SET FRONT (SILVER WHITE)	1
5-2	F0505-02	COVER SET FRONT (GINGKO-BLUE)	1
5-3	F0505-03	COVER SET FRONT (BLACK)	1
5-4	F0505-04	COVER SET FRONT (DARK GREEN DOUBLE COLOR)	1
5-5	F0505-05	COVER SET FRONT (JEWEL BLUE DOUBLE COLOR)	1
5-6	F0505-06	COVER SET FRONT (DARK RED DOUBLE COLOR)	1
5-7	F0505-07	COVER SET FRONT (BLACK DOUBLE COLOR)	1
5-8	F0505-08	COVER SET FRONT (GREY DOUBLE COLOR)	1
6	F0506	SCREW M6X12	1
7	F0507	SCREW ST3.9X12	1
8	F0508	BOLT M6X12	2
9-1	F0509-01	FRONT SIDE MOLD LH (SILVER WHITE)	1
9-2	F0509-02	FRONT SIDE MOLD LH (GINGKO-BLUE)	1



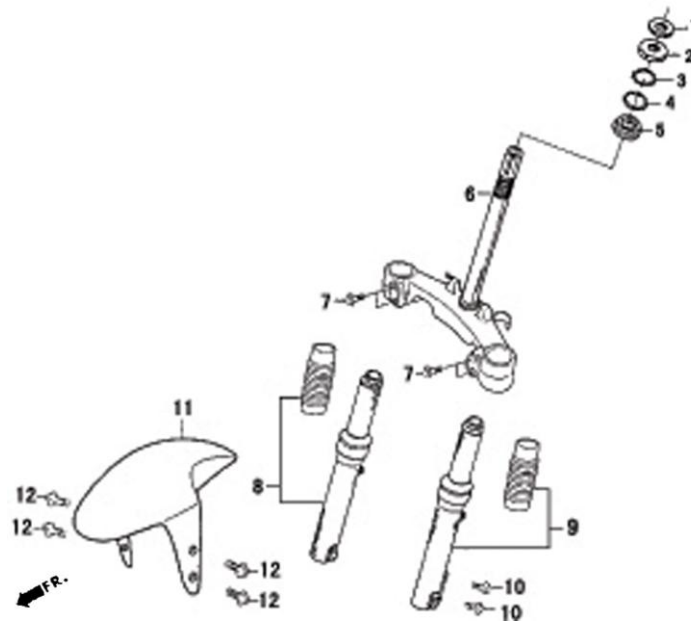
F-5 Front Fork Floor Panel

REF.NO.	PART NO.	DESCRIPTION	Q.T.Y
9-3	F0509-03	FRONT SIDE MOLD LH (BLACK)	1
9-4	F0509-04	FRONT SIDE MOLD LH (DARK GREEN DOUBLE COLR)	1
9-5	F0509-05	FRONT SIDE MOLD LH (JEWEL BLUE DOUBLE COLOR)	1
9-6	F0509-06	FRONT SIDE MOLD LH (DARK RED DOUBLE COLOR)	1
9-7	F0509-07	FRONT SIDE MOLD LH (BLACK DOUBLE COLOR)	1
9-8	F0509-08	FRONT SIDE MOLD LH (GREY DOUBLE COLOR)	1
10	F0510	NUT CLIP	1
11	F0511	CLIP	3
12-1	F0512-01	COVER DECORATION FRONT (SILVER WHITE)	1
12-2	F0512-02	COVER DECORATION FRONT (GINGKO-BLUE)	1
12-3	F0512-03	COVER DECORATION FRONT (BLACK)	1
12-4	F0512-04	COVER DECORATION FRONT (DARK GREEN DOUBLE COLOR)	1
12-5	F0512-05	COVER DECORATION FRONT (JEWEL BLUE DOUBLE COLOR)	1
12-6	F0512-06	COVER DECORATION FRONT (DARK RED DOUBLE COLOR)	1
12-7	F0512-07	COVER DECORATION FRONT (BLACK DOUBLE COLOR)	1
12-8	F0512-08	COVER DECORATION FRONT (GREY DOUBLE COLOR)	1
13	F0513	LID LEG SHIELD	2
14	F0514	BOLT M6X12	2
15	F0515	BOLT M6X12	2
16	F0516	NUT CLIP	2
17	F0517	BOLT M6X16	2
18	F0518	FRONT LUGGAGE	1
19	F0519	SCREW ST3.9X12	2
20	F0520	BOLT M6X16	1



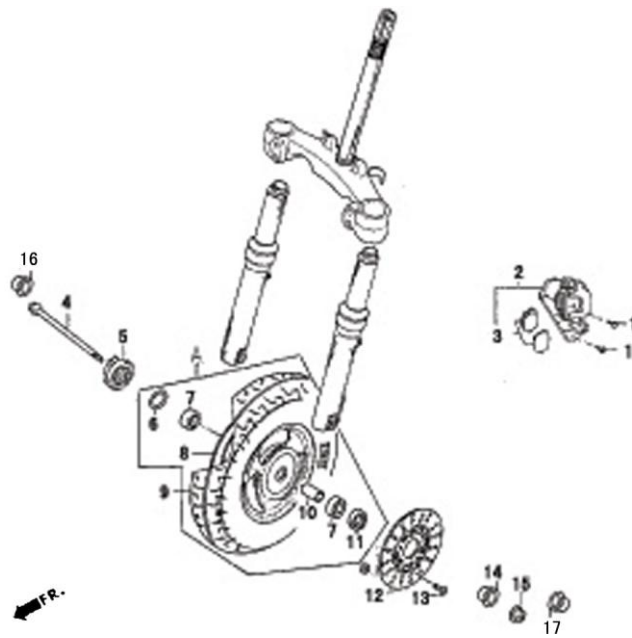
F-5 Front Fork Floor Panel

REF.NO.	PART NO.	DESCRIPTION	Q.T.Y
21	F0521	SEAL DUST	1
22	F0522	LID LEG SHIELD	1
23	F0523	SET SPRING LUGGAGE COVER	1
24	F0524	COVER FRONT LAGGAGE	1
25	F0525	BRACKET	2
26	F0526	SCREW ST 3.9X12	2
27	F0527	PEDAL FLOOR	1



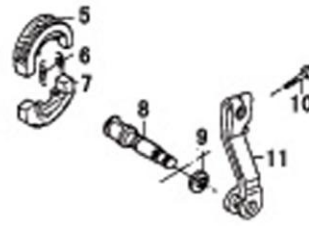
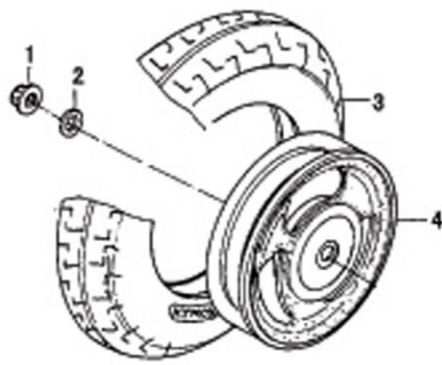
F-6 Front Fork Wheel

REF.NO.	PART NO.	DESCRIPTION	Q.T.Y
1	F0601	NUT	1
2	F0602	BOLL RACE	1
3	F0603	BOLL ϕ 4.763	1
4	F0604	BOLL ϕ 4.763	1
5	F0605	BOLL RACE	1
6	F0606	STEERING	1
7	F0607	BOLT M8X40	4
8	F0608	FORK ASSY R FR	1
9	F0609	FORK ASSY L FR	1
10	F0610	BOL M8X32	2
11-1	F0611-01	FENDER FR (SILVER WHITE)	1
11-2	F0611-02	FENDER FR (GINGKO-BLUE)	1
11-3	F0611-03	FENDER FR (BLACK)	1
11-4	F0611-04	FENDER FR (DARK GREEN DOUBLE COLOR)	1
11-5	F0611-05	FENDER FR (JEWEL BLUE DOUBLE COLOR)	1
11-6	F0611-06	FENDER FR (DARK RED DOUBLE COLOR)	1
11-7	F0611-07	FENDER FR (BLACK DOUBLE COLOR)	1
11-8	F0611-08	FENDER FR (GREY DOUBLE COLOR)	1
12	F0612	BOLT M6X14	4



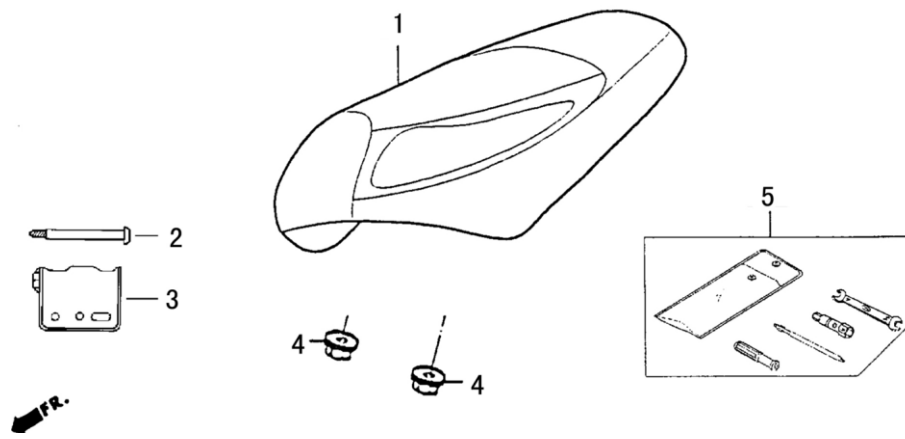
F-7 Front Wheel

REF.NO.	PART NO.	DESCRIPTION	Q.T.Y
A	F07A	FRONT WHEEL ASSY	1
1	F0701	BOLT M8X35	2
2	F0702	LALIPER BRAKE	1
3	F0703	PAD	1
4	F0704	AXLE FRONT WHEEL	1
5	F0705	BOX ASSY SPEEDOMETER GEAR	1
6	F0706	SEAL	1
7	F0707	BEARING 6201	2
8	F0708	WHEEL COMP FR	1
9	F0709	TIRE COMP FRONT 3.50-10	1
10	F0710	SPACER	1
11	F0711	SEAL20X32X5	1
12	F0712	DISC BRAKE	1
13	F0713	SCREW M8X25	3
14	F0714	COLLAR FRONT WHEEL	1
15	F0715	BOLT M12X1.25	1
16	F0716	CAP RUBBER ϕ 12	1
17	F0717	CAP RUBBER ϕ 14	1



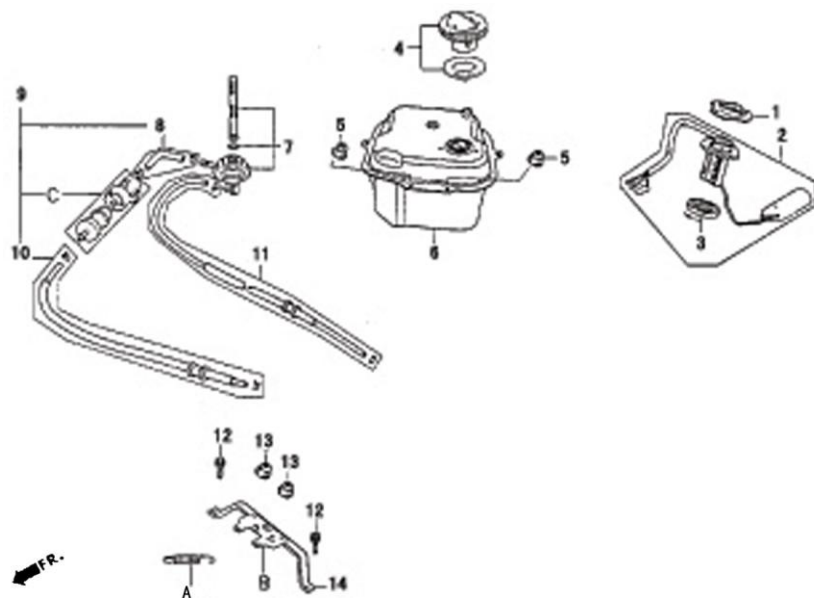
F-8 Rear Wheel

REF.NO.	PART NO.	DESCRIPTION	Q.TY
1	F0801	NUT M16X1.5	1
2	F0802	WASHER	1
3	F0803	TIRE ASSY 3.50-10	1
4	F0804	RIN COMP WHEEL	1
5	F0805	SHOE COMP RR BRAKE	1
6	F0806	SPRING BRAKE SHOE	2
7	F0807	SHOE COMP RR BRAKE	1
8	F0808	CAM BRAKE	1
9	F0809	WASHER	1
10	F0810	BOLT M6X20	1
11	F0111	ARM COMP RR BRAKE	1



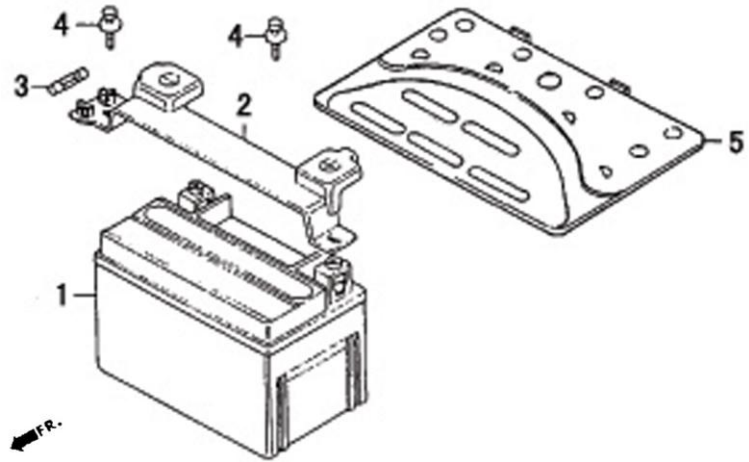
F-9 Seat

REF.NO.	PART NO.	DESCRIPTION	Q.T.Y
1	F0901	SEAT COMP	1
2	F0902	AXLE	1
3	F0903	BRACKET SEAT	1
4	F0904	NUT M6	2
5	F0905	TOOLS	1



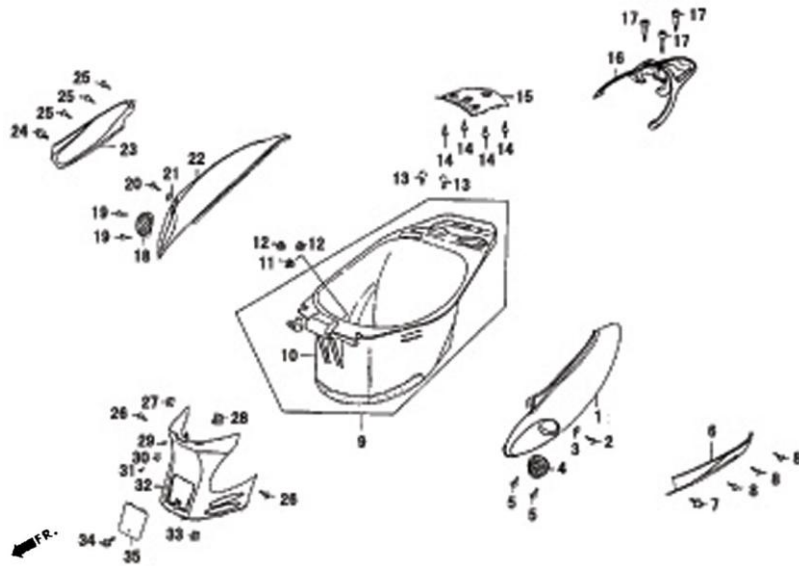
F-10 Fuel Tank

REF.NO.	PART NO.	DESCRIPTION	Q.T.Y
A	F10A	SPRING SEAT CATCH	1
B	F10B	BRACKET SEAT CATCH	1
C	F10C	STRAINER ASSY FUEL	1
1	F1001	RET FUEL UNIT	1
2	F1002	FUEL UNIT ASSY	1
3	F1003	GASKET	1
4	F1004	CAP COMP FILLER	1
5	F1005	NUT M6	2
6	F1006	TANK COMP FUEL	1
7	F1007	AUTO COCK ASSY FUEL	1
8	F1008	TUBE FUEL COCK-STR.A	1
9	F1009	TUBE FUEL	1
10	F1010	TUBE FUEL COCK-STR.B	1
11	F1011	TUBE NO-AIR	1
12	F1012	BOLT M6X12	2
13	F1013	NUT M6	2
14	F1014	STAY RR GRIP	1



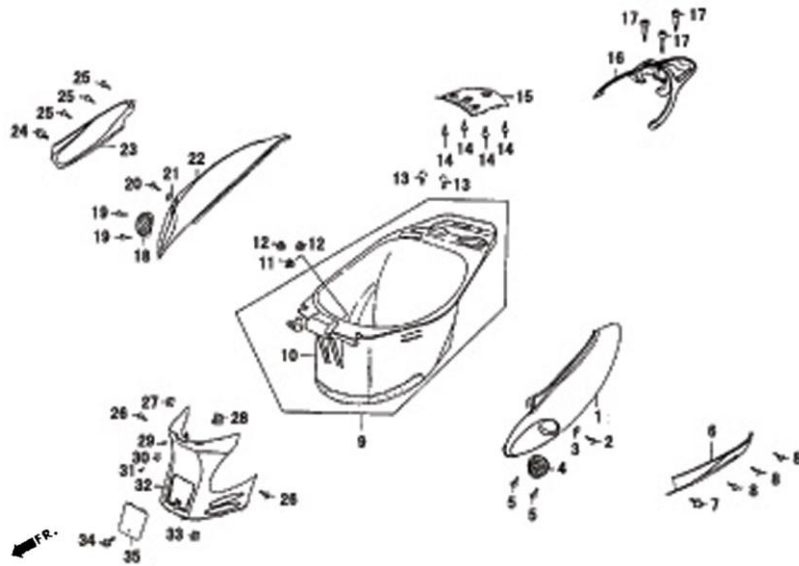
F-11 Battery

REF.NO.	PART NO.	DESCRIPTION	Q.T.Y
1	F1101	BATTERY	1
2	F1102	BAND BATTERY	1
3	F1103	FUSE 15A	1
4	F1104	SCREW M5X12	2
5	F1105	COVER BATTERY	1



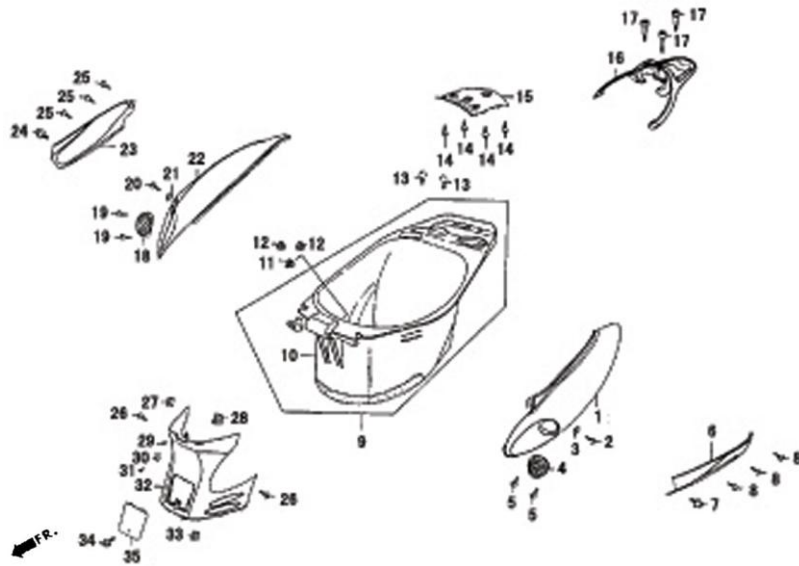
F-12 Body Cover Luggage Box

REF.NO.	PART NO.	DESCRIPTION	Q.T.Y
1-1	F1201-01	COVER LH BODY (SILVER WHITE)	1
1-2	F1201-02	COVER LH BODY (GINGKO-BLUE)	1
1-3	F1201-03	COVER LH BODY (BLACK)	1
1-4	F1201-04	COVER LH BODY (DARK GREEN DOUBLE COLOR)	1
1-5	F1201-05	COVER LH BODY (JEWEL BLUE DOUBLE COLOR)	1
1-6	F1201-06	COVER LH BODY (DARK RED DOUBLE COLOR)	1
1-7	F1201-07	COVER LH BODY (BLACK DOUBLE COLOR)	1
1-8	F1201-08	COVER LH BODY (GREY DOUBLE COLOR)	1
2	F1202	SCREW ST3.9X12	1
3	F1203	NUT CLIP	1
4	F1204	COVER BREATHER LH	1
5	F1205	SCREW ST3.9X12	2
6-1	F1206-01	REAR SIDE MOLD LH (SILVER WHITE)	1
6-2	F1206-02	REAR SIDE MOLD LH (GINGKO-BLUE)	1
6-3	F1206-03	REAR SIDE MOLD LH (BLACK)	1
6-4	F1206-04	REAR SIDE MOLD LH (DARK GREEN DOUBLE COLOR)	1
6-5	F1206-05	REAR SIDE MOLD LH (JEWEL BLUE DOUBLE COLOR)	1
6-6	F1206-06	REAR SIDE MOLD LH (DARK RED DOUBLE COLOR)	1
6-7	F1206-07	REAR SIDE MOLD LH (BLACK DOUBLE COLOR)	1
6-8	F1206-08	REAR SIDE MOLD LH (GREY DOUBLE COLOR)	1
7	F1207	BOLT M6X14	1
8	F1208	SCREW ST3.9X12	2
9	F1209	BOX ASSY LUGGAGE	1
10	F1210	BOX LUGGAGE	1
11	F1211	SCREW M6X12	1
12	F1212	NUT M6	2
13	F1213	BOLT M6X12	2



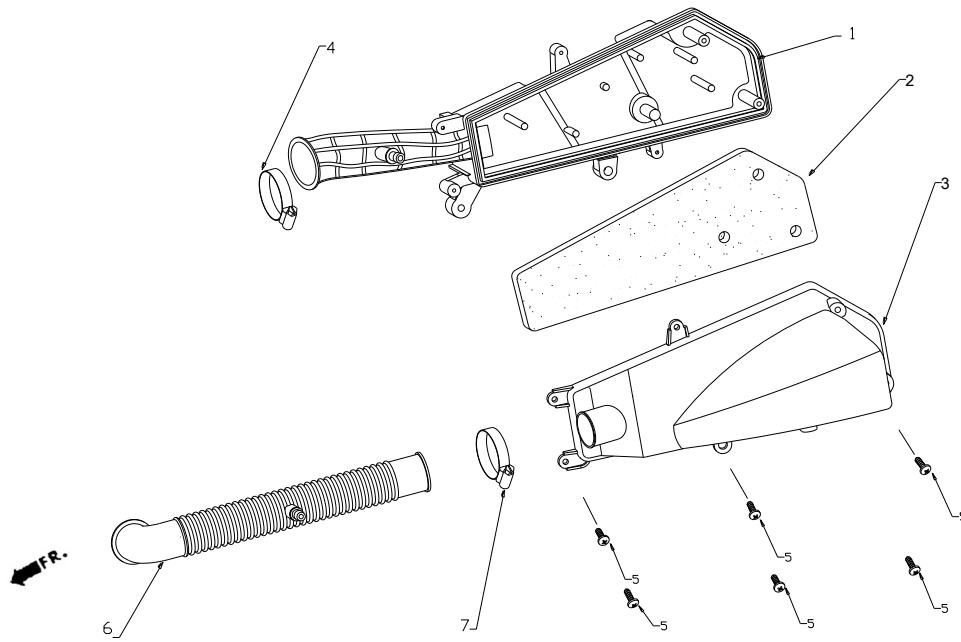
F-12 Body Cover-Luggage Box

REF.NO.	PART NO.	DESCRIPTION	Q.T.Y
14	F1214	SCREW ST3.9X12	4
15-1	F1215-01	COVER RR CENTER (SILVER WHITE)	1
15-2	F1215-02	COVER RR CENTER (GINGKO-BLUE)	1
15-3	F1215-03	COVER RR CENTER (BLACK)	1
15-4	F1215-04	COVER RR CENTER (DARK GREEN DOUBLE COLOR)	1
15-5	F1215-05	COVER RR CENTER (JEWEL BLUE DOUBLE COLOR)	1
15-6	F1215-06	COVER RR CENTER (DARK RED DOUBLE COLOR)	1
15-7	F1215-07	COVER RR CENTER (BLACK DOUBLE COLOR)	1
15-8	F1215-08	COVER RR CENTER (GREY DOUBLE COLOR)	1
16	F1216	LARRIER LUGGAGE	1
17	F1217	BOLT M8X40	3
18	F1218	COVER BREATHER RH	1
19	F1219	SCREW ST3.9X12	2
20	F1220	SCREW ST3.9X12	1
21	F1221	NUT CLIP	1
22-1	F1222-01	COVER RH BODY (SILVER WHITE)	1
22-2	F1222-02	COVER RH BODY (GINGKO-BLUE)	1
22-3	F1222-03	COVER RH BODY (BLACK)	1
22-4	F1222-04	COVER RH BODY (DARK GREEN DOUBLE COLOR)	1
22-5	F1222-05	COVER RH BODY (JEWEL BLUE DOUBLE COLOR)	1
22-6	F1222-06	COVER RH BODY (DARK RED DOUBLE COLOR)	1
22-7	F1222-07	COVER RH BODY (BLACK DOUBLE COLOR)	1
22-8	F1222-08	COVER RH BODY (GREY DOUBLE COLOR)	1
23-1	F1223-01	REAR SIDE MOLD RH (SILVER WHITE)	1
23-2	F1223-02	REAR SIDE MOLD RH (GINGKO-BLUE0	1
23-3	F1223-03	REAR SIDE MOLD RH (BLACK)	1
23-4	F1223-04	REAR SIDE MOLD RH (DARK GREEN DOUBLE COLOR)	1



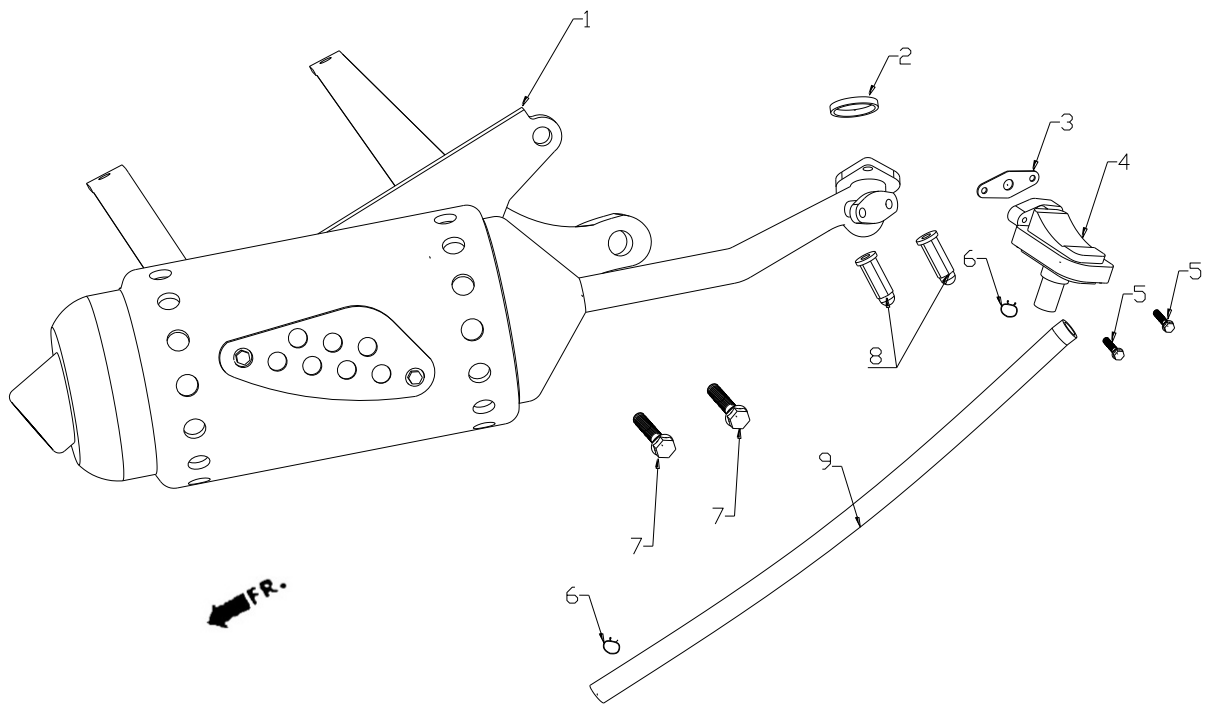
F-12 Body Cover Luggage Box

REF.NO.	PART NO.	DESCRIPTION	Q.T.Y
23-5	F1223-05	REAR SIDE MOLD RH (JEWEL BLUE DOUBLE COLOR)	1
23-6	F1223-06	REAR SIDE MOLD RH (DARK RED DOUBLE COLOR)	1
23-7	F1223-07	REAR SIDE MOLD RH (BLACK DOUBLE COLOR)	1
23-8	F1223-08	REAR SIDE MOLD RH (GREY DOUBLE COLOR)	1
24	F1224	BOLT M6X14	1
25	F1225	SCREW ST3.9X12	2
26	F1226	SCREW ST3.9X12	2
27	F1227	NUT CLIP	1
28	F1228	NUT CLIP M6	1
29	F1229	SCREW ST3.9X12	1
30	F1230	NUT CLIP	1
31	F1231	SCREW ST3.9X12	1
32	F1232	COVER CENTER	1
33	F1233	NUT CLIP M5	1
34	F1234	SCREW M5X12	1
35	F1235	WINDOW COVER CENTER	1



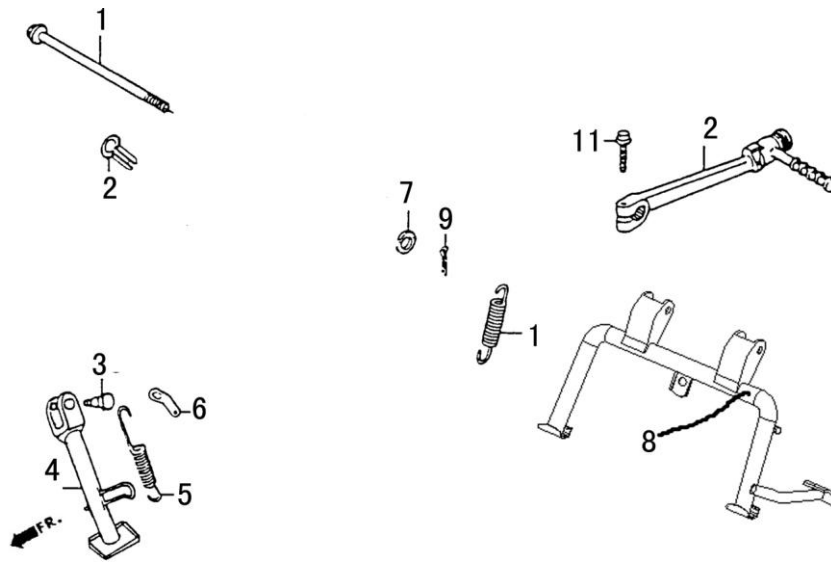
F-13 Air Cleaner

REF.NO.	PART NO.	DESCRIPTION	Q.T.Y
1	F1301	CASE AIR/C	1
2	F1302	ELEMENT AIR/C	1
3	F1303	COVER COMP AIR/C	1
4	F1304	BAND A CONNECTING TUBE	1
5	F1305	SCREW ST4.8X20	6
6	F1306	TUE AIR/C CONN	1
7	F1307	CLIP ASSY AIR/C DUCT	1



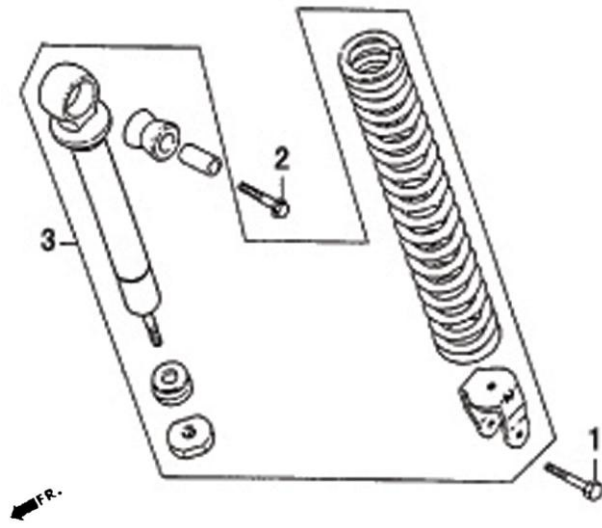
F-14 Exhaust Muffler

REF.NO.	PART NO.	DESCRIPTION	Q.T.Y
1	F1401	MUFFLER ASSY EXHAUST	1
2	F1402	GASKET EXH PIPE	1
3	F1403	GASKET	1
4	F1404	VALVE SECOND AIR IN	1
5	F1405	BOLT M6X12	2
6	F1406	CLAMP	2
7	F1407	BOLT M8X40	2
8	F1408	NUT CAP M6	2
9	F1409	RUBBER PIPE SECOND AIR IN	1



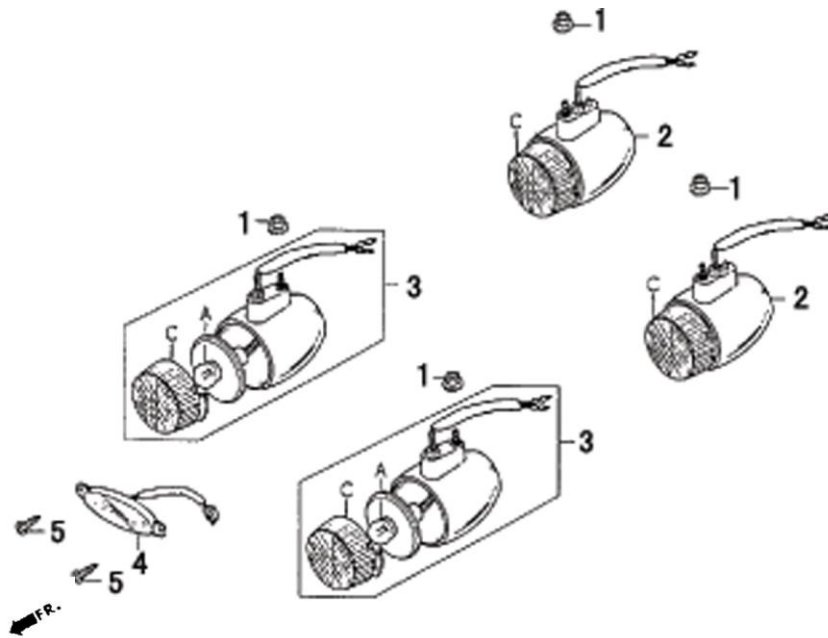
F-15 Kick Start Arm Stand

REF.NO.	PART NO.	DESCRIPTION	Q.T.Y
1	F1501	SHAFT MAIN STAND	1
2	F1502	ARM ASSY KICK STARTER	1
3	F1503	SCREW SIDE STAND PIVOT	1
4	F1504	SIDE STAND	1
5	F1505	SPRING SIDE STAND	1
6	F1506	HOOK SIDE STAND	1
7	F1507	WASHER 8	1
8	F1508	MAIN STAND	1
9	F1509	PIN LOCK 2X16	1
10	F1510	SPRING MAIN STAND	1
11	F1511	BOLT M6X22	1



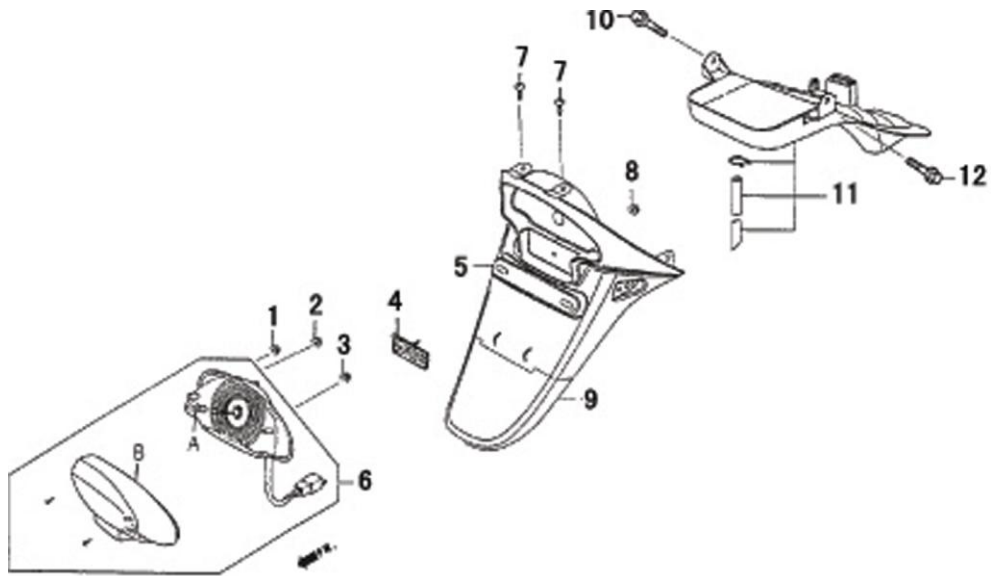
F-16 Rear Cushion

REF.NO.	PART NO.	DESCRIPTION	Q.TY
1	F1601	BOLT M8X32	1
2	F1602	BOLT M10X40	1
3	F1603	CUSHION ASSY REAR	1



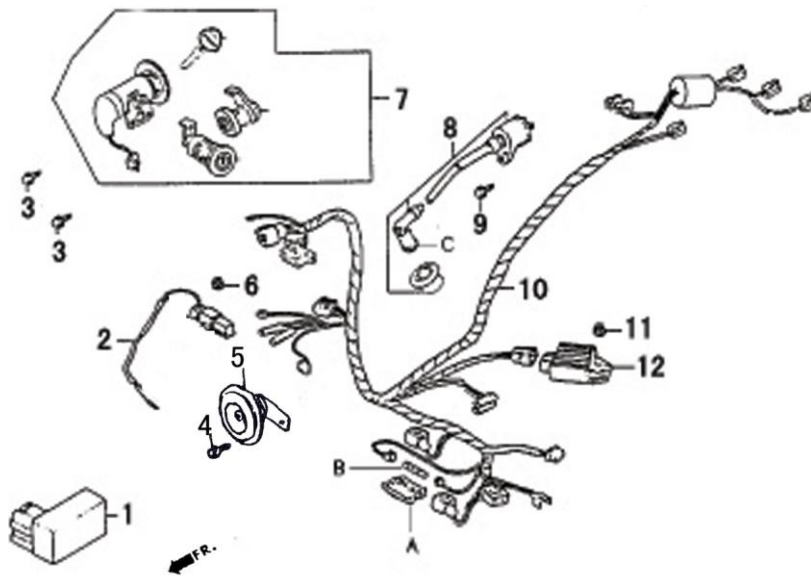
F-17 Position Light

REF.NO.	PART NO.	DESCRIPTION	Q.T.Y
A	F17A	BULB WINKER 12V-10W	4
C	F17C	LENS WINKER	4
1	F1701	NUT M5	4
2	F1702	LIGHT ASSY REAR WINKER	2
3	F1703	LIGHT ASSY FRONT WINKER	2
4	F1704	LIGHT ASSY FRONT POSITION	1
5	F1705	SCREW ST3.9X12	2



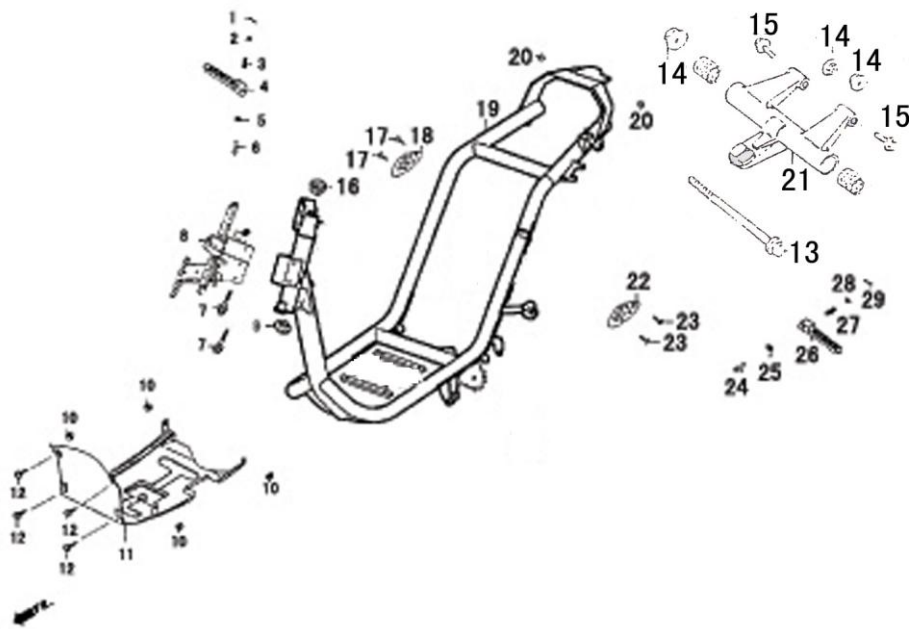
F-18 Tail Light

REF.NO.	PART NO.	DESCRIPTION	Q.T.Y
A	F18A	BULB TAIL LIGHT 12V 21/5W	1
B	F18B	LENS COMP TAIL LIGHT	1
1	F1801	NUT M5	3
2	F1802	NUT M5	3
3	F1803	NUT M5	3
4	F1804	REFLEX REFLECTOR	1
5	F1805	FENDER B RR ASSY	1
6	F1806	TAIL LINGT	1
7	F1807	BOLT M6X12	2
8	F1808	NUT M6	1
9	F1809	FENDER C RR ASSY	1
10	F1810	BOLT M6X16	1
11	F1811	FENDER A RR ASSY	1
12	F1812	BOLT M6X16	1



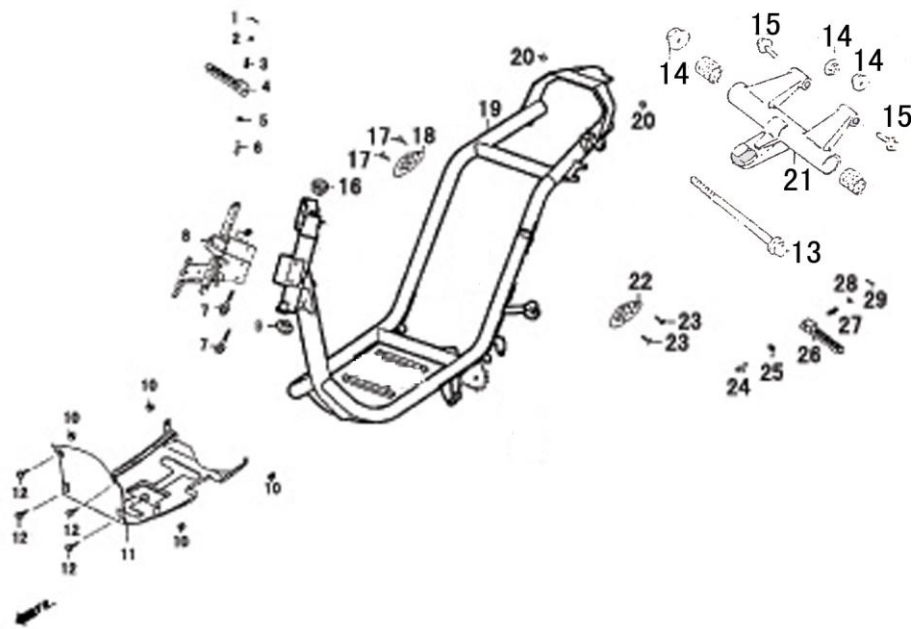
F-19 Wire Harness

REF.NO.	PART NO.	DESCRIPTION	Q.T.Y
A	F19A	CASE FUSE	1
B	F19B	FUSE 15A	2
C	F19C	COIL ASSY IGNITION	1
1	F1901	UNIT COMP CDI	1
2	F1902	RESISTOR COMP	1
3	F1903	BOLT M6X12	2
4	F1904	BOLT M6X16	1
5	F1905	HORN	1
6	F1906	NUT M6	1
7	F1907	KEY SET	1
8	F1908	COIL ASSY IGNITION	1
9	F1909	SCREW M5X22	1
10	F1910	HARNESS WIRE	1
11	F1911	BOLT M6X16	1
12	F1912	RECTIFIER ASSY	1



F-20 Frame Body

REF.NO.	PART NO.	DESCRIPTION	Q.T.Y
1	F2001	COTTER 1.6X20	1
2	F2002	BALL $\phi 6.35$	1
3	F2003	SPRING	1
4	F2004	FOOTREST RH RR	1
5	F2005	WASHER	1
6	F2006	PIN	1
7	F2007	BOLT M6X50	2
8	F2008	STAY FRONT COVER	1
9	F2009	BALL RACE LOWER	1
10	F2010	NUT M6	4
11	F2011	COVER UNDER	1
12	F2012	SCREW ST3.9X12	4
13	F2013	BOLT FLANGE M10X245	1
14	F2014	NUT M10X1.25	3
15	F2015	BOLT M10X70	2
16	F2016	BALL RACE UPPER	1
17	F2017	BOLT M6X12	1
18	F2018	PLATE DECORATION RH	1
19	F2019	BODY COMP FRAME	1
20	F2020	NUT M6	2
21	F2021	LINK ASSY ENG HANGER	1
22	F2022	PLATE DECORATION LH	1
23	F2023	BOLT M6X12	1
24	F2024	PIN	1
25	F2025	WASHER	1



F-20 Frame Body

REF.NO.	PART NO.	DESCRIPTION	Q.T.Y
26	F2026	FOOTREST LH RR	1
27	F2027	SPRING	1
28	F2028	BALL ϕ 6.35	1
29	F2029	COTTER 1.6X20	1