

JL50QT-4 (12" wheel) PARTS EXPLODE DRAWING

Edition No.: 01 , Year: 2007



CIXI KINGRING MOTORCYCLE CO.,LTD.

INDEX

E-1 CRANK CASE.....1
E-2 CYLINDER HEAD COVER·CYLINDER HEAD3
E-3 CYLINDER·CRANK CASE·PISTON5
E-4 RIGHT CRANKCASE COVER6
E-5 CARBURETOR7
E-6 DRIVEN PULLEY9
E-7 STARTINT MOTOR·OIL PUMP11
E-8 FAN COVER·GENERATOR12
E-9 TRANSMISSION.....13
F-1 HEAD LIGHT14
F-2 SPEEDOMETER15
F-3 HANDLE STEERING16
F-4 FRONT BRAKE ASSY.....18
F-5 FRONT COVER BODY·FLOOR PANEL21
F-6 FRONT FORK23
F-7 FRONT WHEEL25
F-8 REAR WHEEL26
F-9 SEAT27
F-10 FUEL TANK28
F-11 BATTERY29
F-12 BODY COVER·LUGGAGE BOX.....30
F-13 AIR CLEANER.....32
F-14 EXHAUST MUFFLER33
F-15 KICK START ARM·STAND34
F-16 REAR CUSHION35
F-17 SIGNAL LIGHT36
F-18 TAIL LIGHT37
F-19 WIRE HARNESS38
F-20 FRAME BODY39
F-21 REAR CARRIER41

Address: Kingring Developing Zone, Cixi,Ningbo, Zhejiang 315301, P.R.China

Tel:0086 574 63219030, 63218692,63218196;63218672

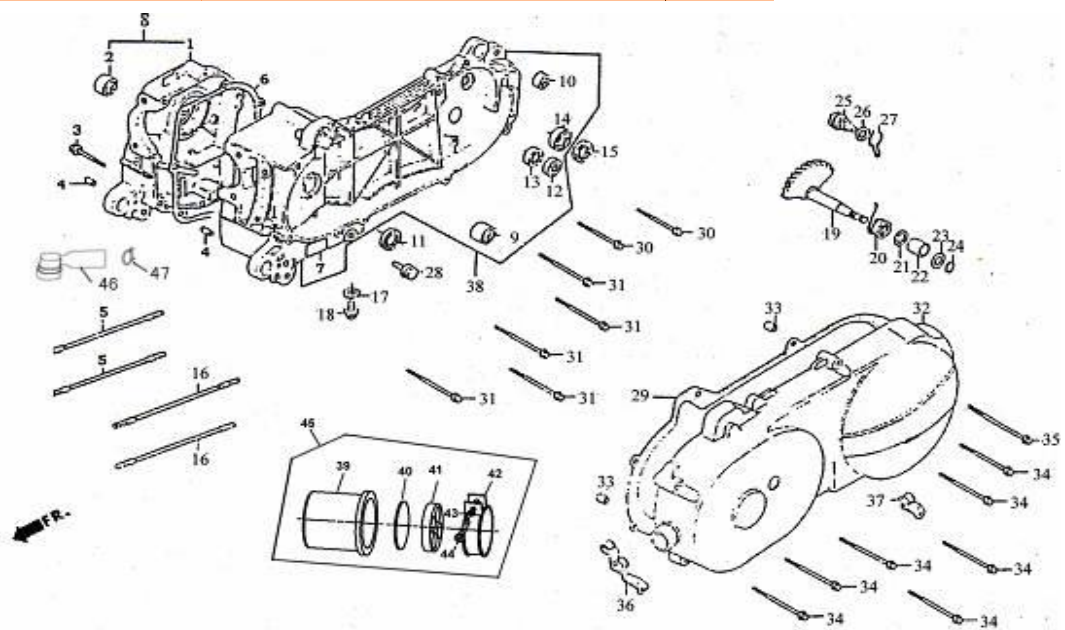
Fax: 0086 574 63218193

E-mail: motor@kingring.com

Website:www.kingringmotor.com; kingring.en.alibaba.com

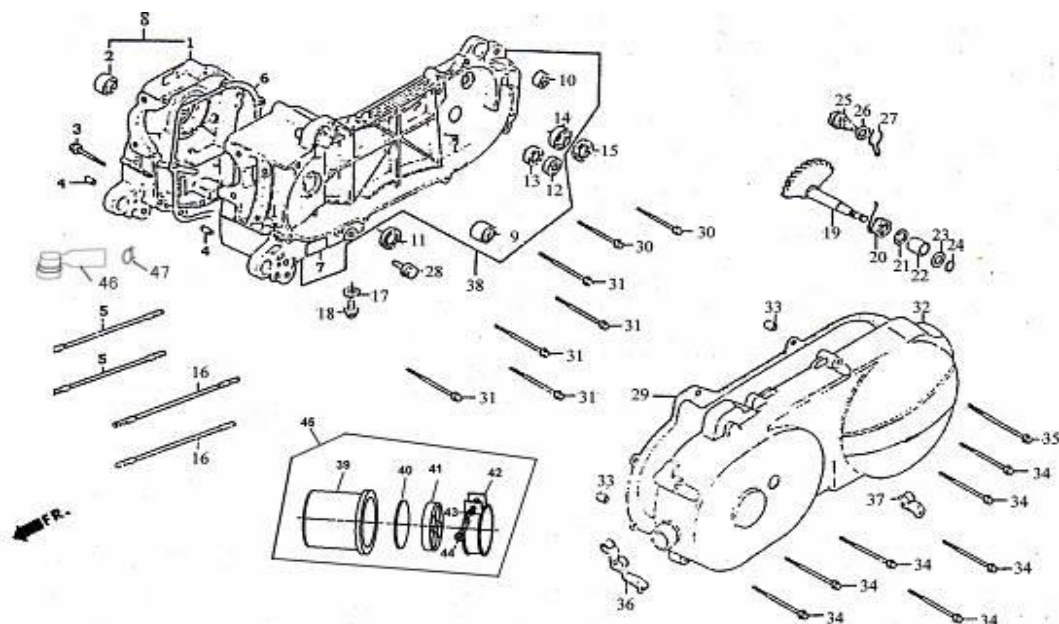
Attention: Please kindly note the latest unit prices (usd) in the below charts are updated every month according to the latest exchange rate

MONTH - YEAR:	March . 2014
Current exchange	7,8073



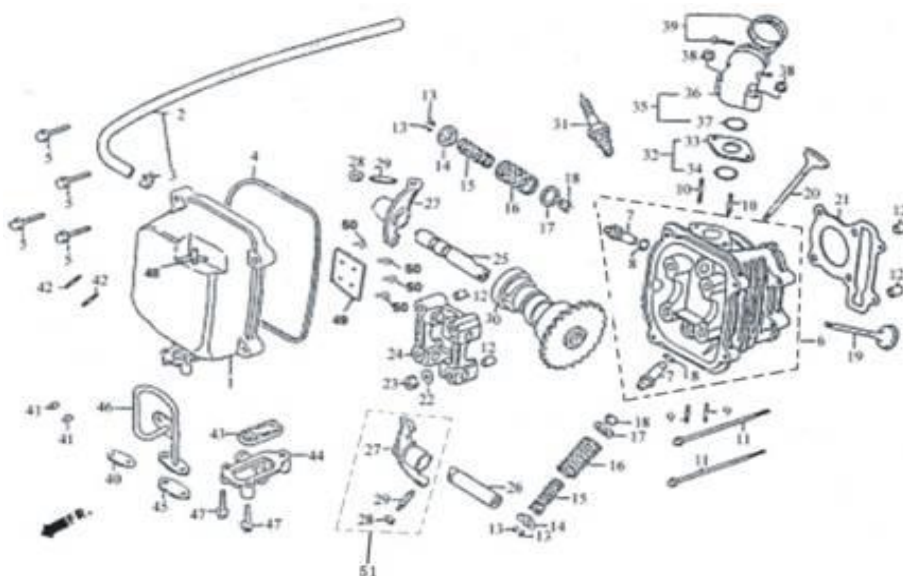
E-01 Crank case

REF.NO.	PART NO.	DESCRIPTION	Q.T.Y
1	E0101	CRANK CASE COMP, RIGHT	1
2	E0102	RUB BUSH ING, HANGER	1
3	E0103	BOLT FLANGE M6×45	1
4	E0104	DOWEL PIN M8×14	2
5	E0105	BOLT STUD M7×168	2
6	E0106	GASKET, CRANK CASE	1
7	E0107	CRANK CASE, LEFT	1
8	E0108	CASE SET, RH CRANK	1
9	E0109	BUSHING, HANGER	1
10	E0110	UNDER RUBBER BUSH, RR	1
11	E0111	OIL SEAL 19.8×30×5	1
12	E0112	BEARING BALL RADIAL 6303	1
13	E0113	BALL 6201	1
14	E0114	BALL 6203	1
15	E0115	OIL SEAL 17×30×6	1
16	E0116	BOLT STUD 7×176	2
17	E0117	WASHER 8	1
18	E0118	SCREW	1
19	E0119	SPINDLE. KICK STARTER	1
20	E0120	SPRING, KICK RETURN	1
21	E0121	COLLAR	1
22	E0122	BUSH, KICK SPINDLE	1
23	E0123	WASHER, KICK SPINDLE	1
24	E0124	CLAMP 14MM	1



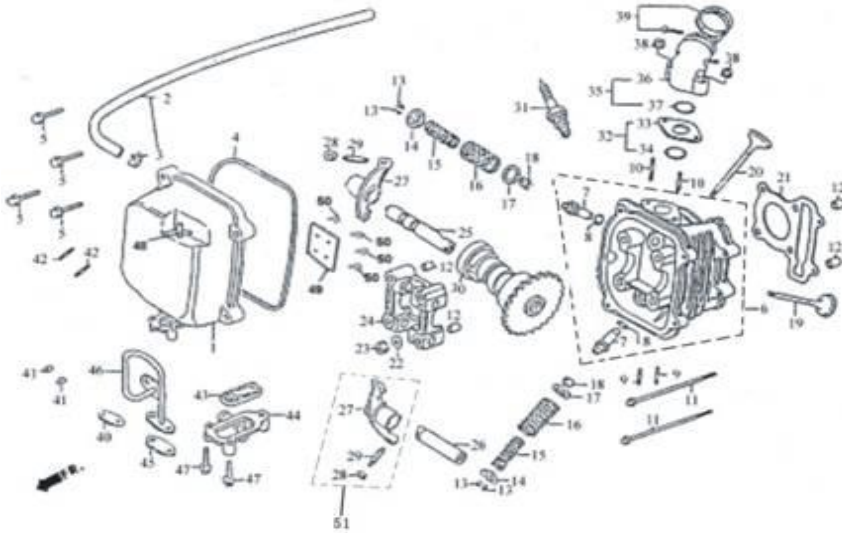
E-01 Crank case

REF.NO.	PART NO.	DESCRIPTION	Q.T.Y
25	E0125	GEAR COMP ,KICK DRIVEN	1
26	E0126	WASHER THRUST 10	1
27	E0127	SPRING, DRIVEN GEAR	1
28	E0128	BOLT ASSY DRAIN PLUG	1
29	E0129	GASKET ,CRANKCASE COVER LH	1
30	E0130	BOLT FLANGE 8×35	2
31	E0131	BOLT FLANGE 8×40	5
32	E0132	COVER, CRANKCASE LH	5
33	E0133	DOWEL PIN 8×14	2
34	E0134	BOLT FLANGE 6×35	7
35	E0135	BOLT SPECIAL 8MM	1
36	E0136	CLAMPER THROTTLE CABLE	1
37	E0137	CLAMPER BRAKE CABLE	1
38	E0138	CRANK CASE SET ,LH	2
39	E0139	CAP	1
40	E0140	SPONGE	1
41	E0141	RUBBER PLATE	1
42	E0142	CLIP	1
43	E0143	WASHER	1
44	E0144	BOLT M4X35	1
45	E0145	INLET AIR ASSY., ENGINE	1
46	E0146	FILTER	40
47	E0147	CLIP	1



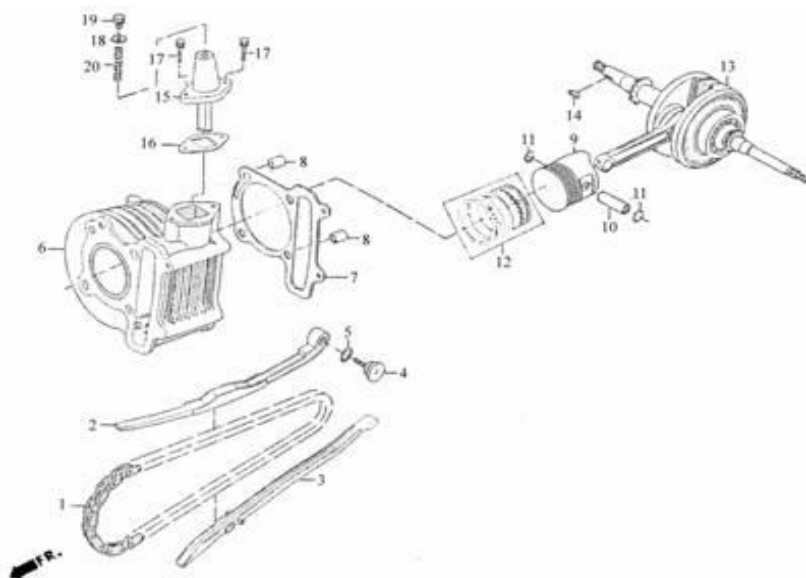
E-02 Cylinder Head Cover-Cylinder Head

REF.NO.	PART NO.	DESCRIPTION	Q.T.Y
1	E0201	COVER COMP HEAD	1
2	E0202	TUBE BREATHER	1
3	E0203	CLIP	1
4	E0204	GASKET ,HEAD COVER	1
5	E0205	BOLT FLANGE SH 6X25	4
6	E0206	HEAD COMP,CYLINDER	1
7	E0207	GUIDE VALVE,THROTTLE	2
8	E0208	O-RING 9X1.6	2
9	E0209	BOLT STUD 6X32	2
10	E0210	BOLT STUD II 6X50	2
11	E0211	BOLT FLANGE 6X85	2
12	E0212	PIN DOWEL SPECIAL 8X14	4
13	E0213	COTTER VALVE	4
14	E0214	RETAINER ,VALVE SPRING	2
15	E0215	SPRING VALVE INNER	2
16	E0216	SPRING VALVE OUTER	2
17	E0217	SOCKET, VALVE SPRING OUTER	40
18	E0218	OIL SEAL ,VALVE STEM	2
19	E0219	VALVE EXHAUST	1
20	E0220	VALVE INLET	1
21	E0221	GASKET CYLINDER HEAD	1
22	E0222	WASHER SERALING 7	4
23	E0223	NUT FLANGE 7MM	4
24	E0224	HOLDER, CAM SHAFT	1
25	E0225	IN ROCKER ARM,VALVE	1



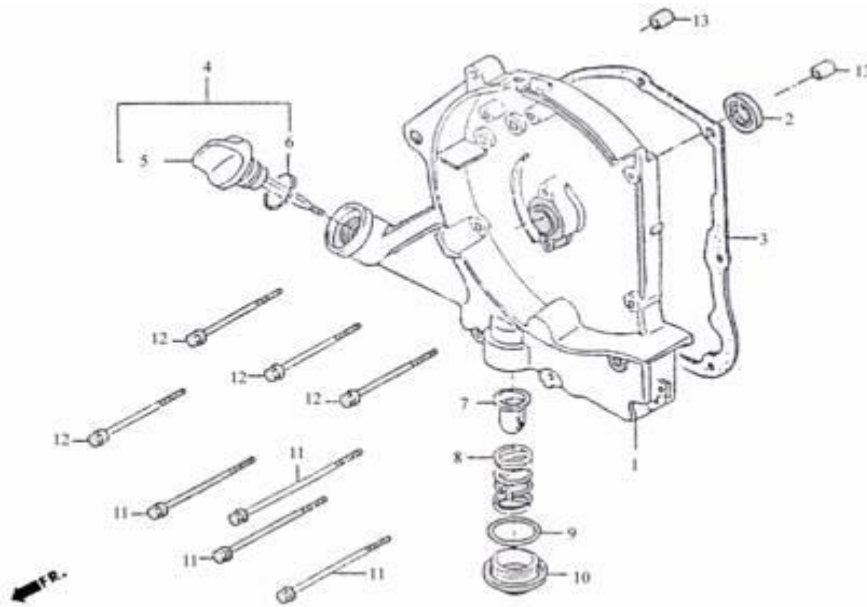
E-02 Cylinder Head Cover-Cylinder Head

REF.NO.	PART NO.	DESCRIPTION	Q.T.Y
26	E0226	ROCKER ARM, EXHAUST VALVE	1
27	E0227	ROCKER, VALVE	2
28	E0228	NUT, TAPPET ADJUSTING	2
29	E0229	SCREW, TAPPET ADJUSTING	2
30	E0230	SHAFT COMP, CAM	1
31	E0231	SPARK PLUG	1
32	E0232	INSULATOR ASSY ,CARB	1
33	E0233	INSULATOR ,CARB	1
34	E0234	O-RING 20.6X1.9	1
35	E0235	PIPE ASSY, INLET	1
36	E0236	PIPE COMP, INLET	1
37	E0237	O-RING 20.6X1.9	1
38	E0238	NUT FLANGE 6	2
39	E0239	INLET AIR PIPE	1
40	E0240	GASKET ,AIR PIPE	1
41	E0241	NUT HEX CAP M6	10
42	E0242	BOLT STUD 6X16	2
43	E0243	REED VALVE COMP	1
44	E0244	COVER, REED VALVE	10
45	E0245	GAKT A/I PIPE	1
46	E0246	PIPE COMP AIR	1
47	E0247	BOLT, M6X40	2
48	E0248	METAL PIPE	1
49	E0249	METAL, PLATE	1
50	E0250	BOLT M4X8	4
51	E0251	VALVE ROCKER ASSY.	2



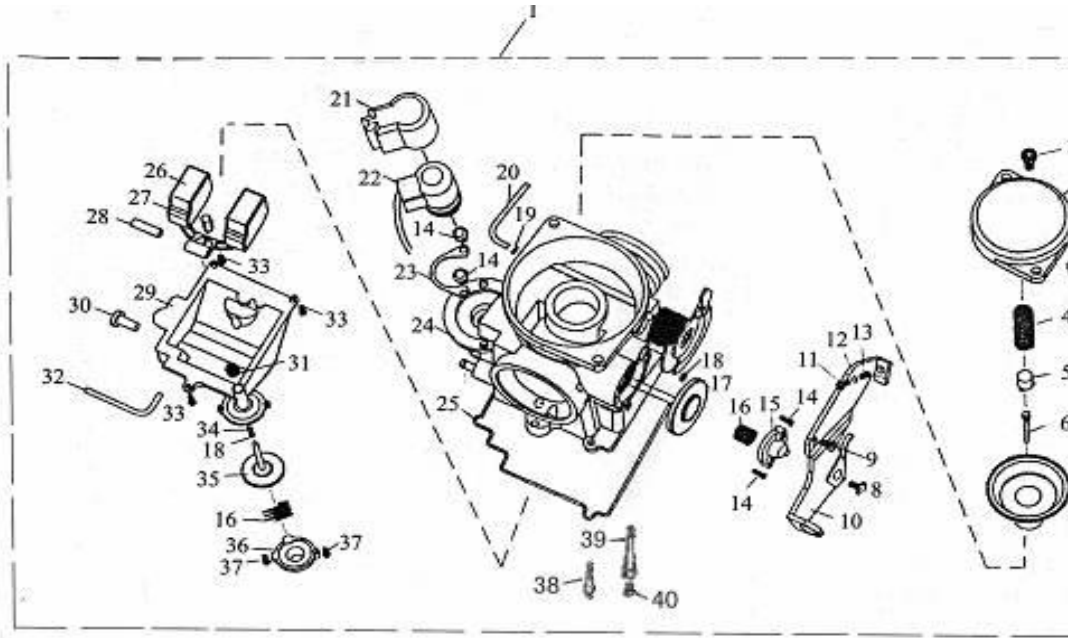
E-03 Cylinder·Crankcase·Piston

REF.NO.	PART NO.	DESCRIPTION	Q.T.Y
1	E0301	CHAIN CAMSHAFT	1
2	E0302	TENSIONER CAM CHAIN	1
3	E0303	GUIDE COMP CAM CHAIN	1
4	E0304	SCREW, TENSIONER	1
5	E0305	O-RING 15.5X1.5	1
6	E0306	CYLINDER COMP	1
7	E0307	GASKET, CYLINDER	1
8	E0308	PIN DOWEL SPECIAL 8X14	2
9	E0309	PISTON	1
10	E0310	PIN PISTON	1
11	E0311	PISTON PIN CLIP	2
12	E0312	RING SET, PISTON	1
13	E0313	CRANK SHAFT COMP	1
14	E0314	KEY, FASTENESS	1
15	E0315	ADJUSTER, CAM CHAIN	1
16	E0316	GASKET CAM CHAIN	1
17	E0317	SCREW FLANGE 6X18	2
18	E0318	WASHER SEALING 8X16X1.6	1
19	E0319	SCREW ADJUSTER	1
20	E0320	SPRING, CHAIN ADJUSTER	1



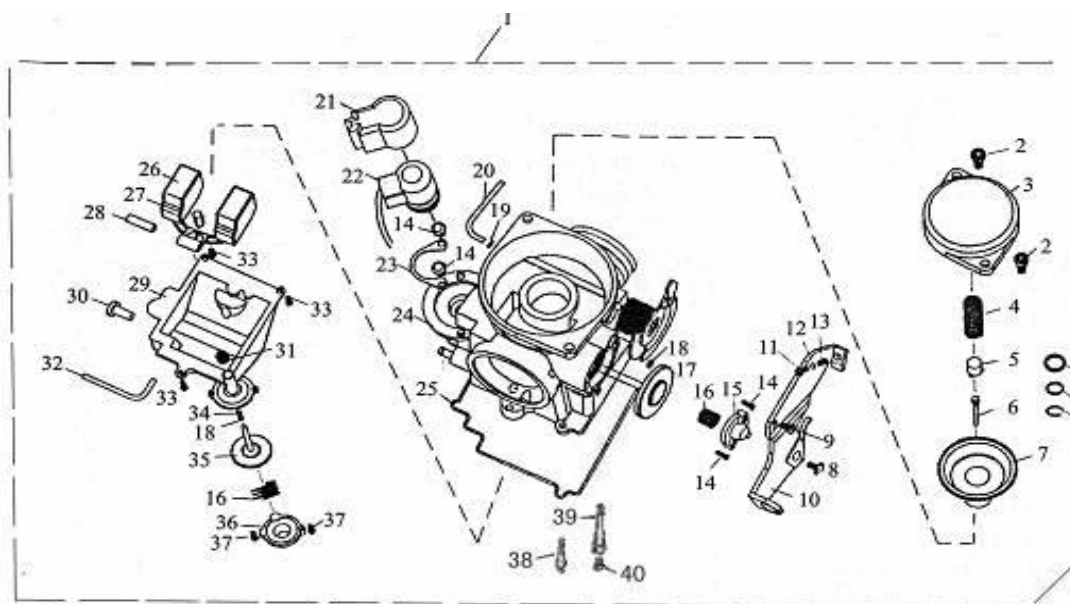
E-04 Right Crankcase Cover

REF.NO.	PART NO.	DESCRIPTION	Q.T.Y
1	E0401	COVER, RH CRANK CASE	1
2	E0402	OIL SEAL 16.4X30X5	1
3	E0403	GASTER R COVER	1
4	E0404	GAUGE ASSY , OIL LEVEL	1
5	E0405	GAUGE , OIL LEVEL	1
6	E0406	O-RING 18X3	1
7	E0407	SCREEN OIL FILTER	1
8	E0408	SPRING OIL FILTER SCREEN	1
9	E0409	O-RING 30X8MM	1
10	E0410	CAP, TAPPET ADJUSTING	1
11	E0411	SCREW FLANGE SH M6X100	4
12	E0412	SCREW FLANGE M6X85	4
13	E0413	DOWEL PIN 8X14	2



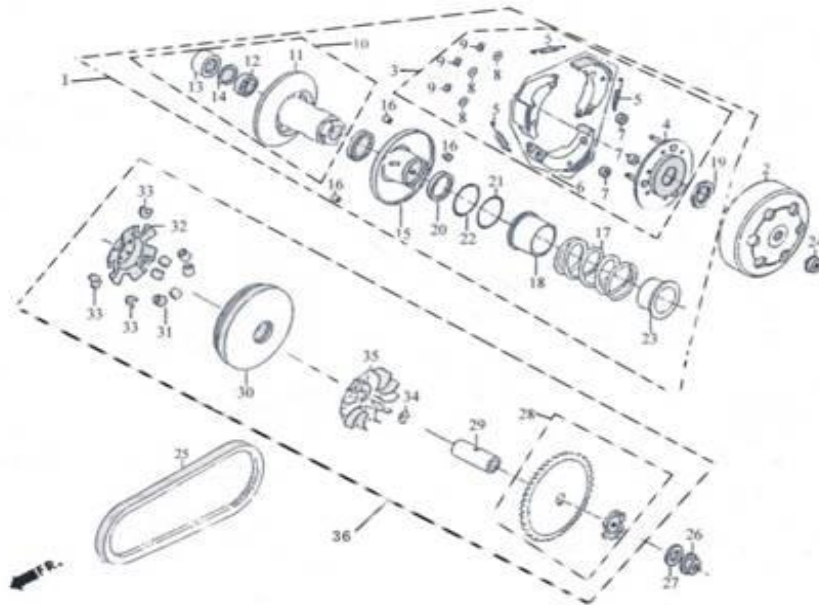
E-05 Carburetor

REF.NO.	PART NO.	DESCRIPTION	Q.T.Y
1	E0501	CARBURETOR	1
2	E0502	SCREW ,SPRING PLATE	2
3	E0503	SPRING PLATE	1
4	E0504	PLATE SPRING	1
5	E0505	SPRING SOCKET	1
6	E0506	JET CARBURETOR	1
6,1	E0506.1	WASHER	1
6,2	E0506.2	O RING	1
6,3	E0506.3	CLIP	1
7	E0507	PISTON COMP.VACUUM	1
8	E0508	OPERATIONLEVER	1
9	E0509	SCREW M5X8	1
10	E0510	SCREW M5X14	1
11	E0511	SCREW M4X17	1
12	E0512	WASHER 4	1
13	E0513	SPRING	1
14	E0514	SCREW M4X8	4
15	E0515	ACV VALVE, COVER	
16	E0516	SPRING, ACV VALVE	2
17	E0517	ACV VALVE	1
18	E0518	SEALING RING	2
19	E0519	CLIP, TUBE	1



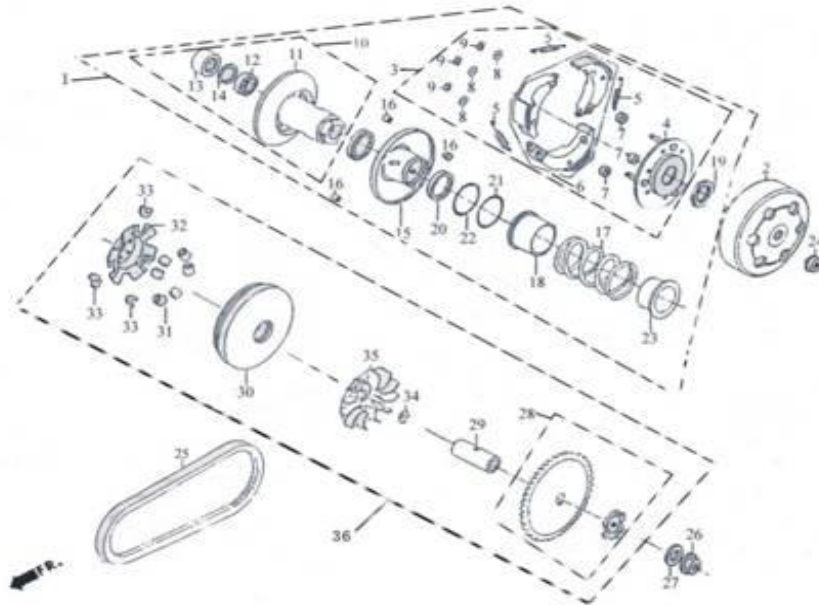
E-5 Carburetor

REF.NO.	PART NO.	DESCRIPTION	Q.T.Y
20	E0520	BREATHER TUBE	1
21	E0521	CAP, STARTER VALVE	1
22	E0522	START VALVE, ASSY	1
23	E0523	START VALVE, SOCKET	1
24	E0524	CARB. BODY	1
25	E0525	SEAL WASHER,FLOAT CELL	1
26	E0526	FLOAT , CARB.	1
27	E0527	NEEDLE ASSY. FLOAT	1
28	E0528	PIN , FLOAT	1
29	E0529	LOWER COVER,CARB.	1
30	E0530	SCRW, OIL DRAIN	1
31	E0531	COVER, DIRTPROOF	1
32	E0532	PIPE, OIL	1
33	E0533	SCREW M4X12	3
34	E0534	SEAL WASHER	1
35	E0535	PLUG ASSY, PUMP	1
36	E0536	LOWER COVER, PUMP	1
37	E0537	SCREW M4X10	2
38	E0538	JET IDLE RUNNING	1
39	E0539	MAIN JET	1
40	E0540	MAIN JET COLUMN	1



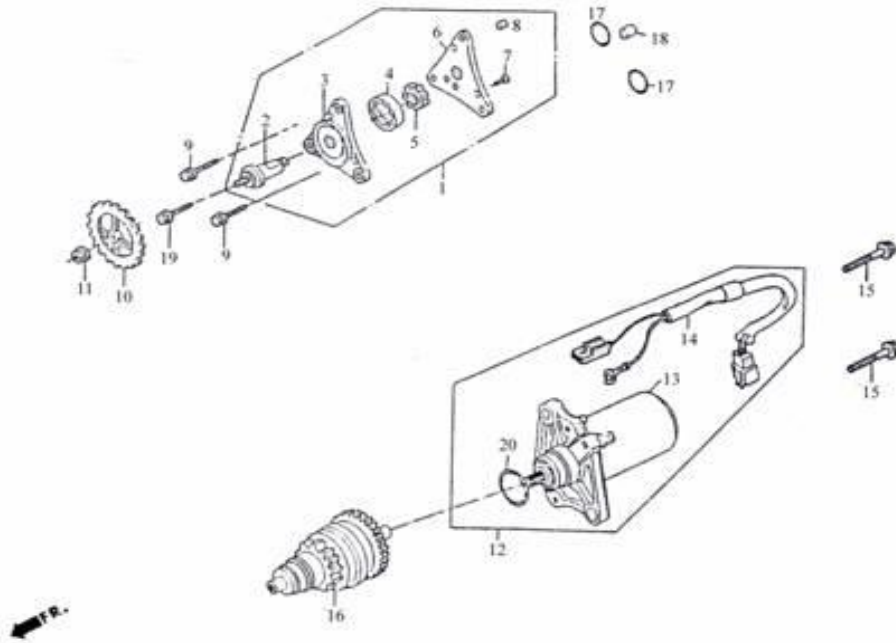
E-06 Driven Pulley

REF.NO.	PART NO.	DESCRIPTION	Q.T.Y
1	E0601	DRIVE STRAP ASSY.	1
2	E0602	CLUTCH OUTER JACKET	1
3	E0603	PLATE ASSY, DRIVE	1
4	E0604	PLATE, COMP DRIVE	1
5	E0605	SPRING, CLUTCH	3
6	E0606	WEIGHT SET CLUTCH	1
7	E0607	RUBBER, CLUTCH DUMPER	3
8	E0608	WASHER 6	3
9	E0609	CIRCLIP 6MM	3
10	E0610	FACE ASSY, DRIVEN	1
11	E0611	FACE COMP DRIVEN	1
12	E0612	BALL 6901U	1
13	E0613	BRG NEEDLE 17X25X18	1
14	E0614	CIRCLIP INSIDE	1
15	E0615	FACE COMP, MOVABLE DRIVEN	1
16	E0616	PIN GUIDE	3
17	E0617	SPRING, DRIVEN FACE	1
18	E0618	COLLAR TUBE	1
19	E0619	NUT SPECIAL M28	1
20	E0620	OIL SEAL 34X39X3,DRIVE	2
21	E0621	O-RING 36X1.5	1
22	E0622	O-RING 39.2X2.2	1
23	E0623	COLLAR	1
24	E0624	NUT FLANGE M10	1
25	E0625	BELT DRIVE	1



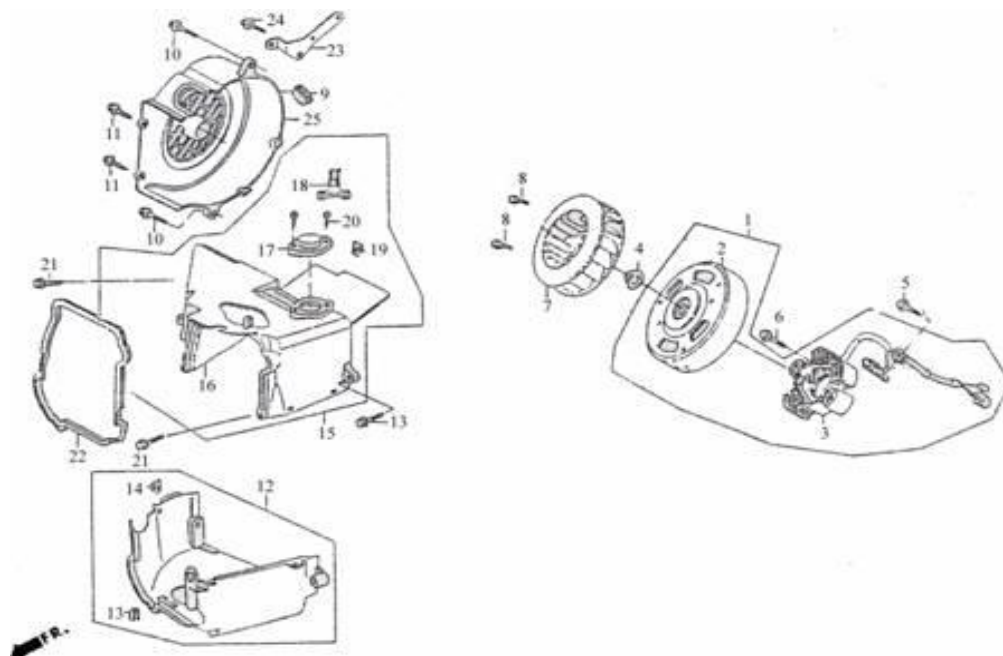
E-06 Driven Pulley

REF.NO.	PART NO.	DESCRIPTION	Q.T.Y
26	E0626	NUT HEX M12	1
27	E0627	WASHER SPECIAL 12	1
28	E0628	FACE DRIVE	1
29	E0629	BUSHING	1
30	E0630	DISK, MOVABLE DRIVE	1
31	E0631	ROLLER COMP ,WEIGHT	6
32	E0632	PLATE, RAMP	1
33	E0633	PIECE SLIDE	3
34	E0634	RATCHET, KICK STARTER	1
35	E0635	FAN ,CVT COOLING	1
36	E0636	DRIVER ASSY.	1



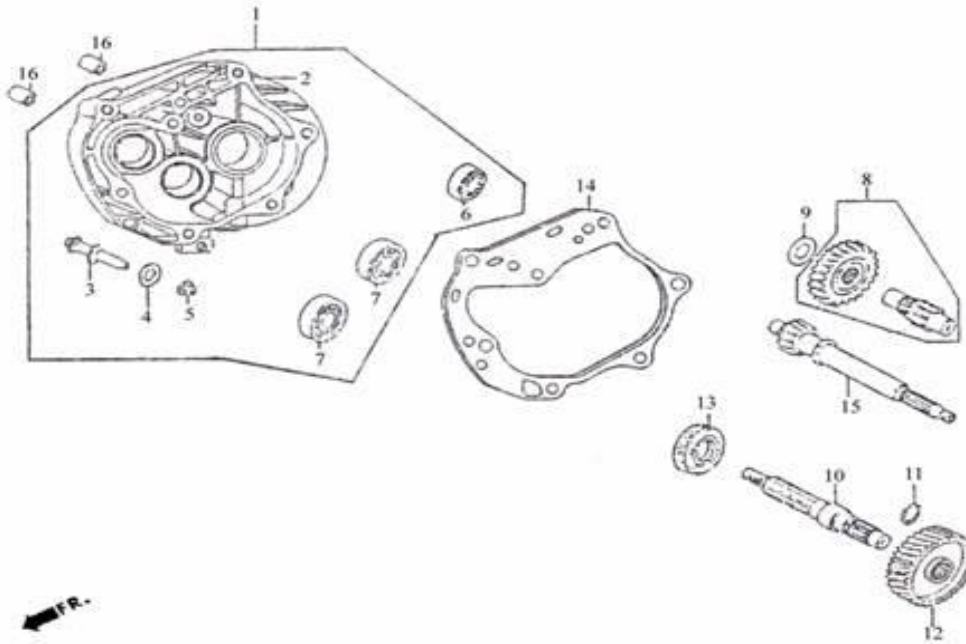
E-07 Starting Motor-Oil Pump

REF.NO.	PART NO.	DESCRIPTION	Q.T.Y
1	E0701	PUMP ASSY OIL	1
2	E0702	SHAFT, OIL PUMP	1
3	E0703	OIL PUMP BODY	1
4	E0704	ROTOR OIL PUMP OUTER	1
5	E0705	ROTER OIL PUMP INNER	1
6	E0706	PLATE OIL PUMP	1
7	E0707	SCREW M4X10	3
8	E0708	DOWEL PIN 4X4.6	1
9	E0709	BOLT FLANGE M 6X20	2
10	E0710	GEAR, OIL PUMP DRIVE	1
11	E0711	NUT FLANGE M6	1
12	E0712	MOTOR ASSY START	1
13	E0713	MOTOR UNIT, START	1
14	E0714	SUB HARNESS, MOTOR	1
15	E0715	BOLT FLANGE SH 6X25	2
16	E0716	PINION ASSY STARTER	1
17	E0717	O-RING 9X1.6	2
18	E0718	PIN DOWELL 8X10	1
19	E0719	BOLT FLANGE M6X25	1
20	E0720	O-RING	1



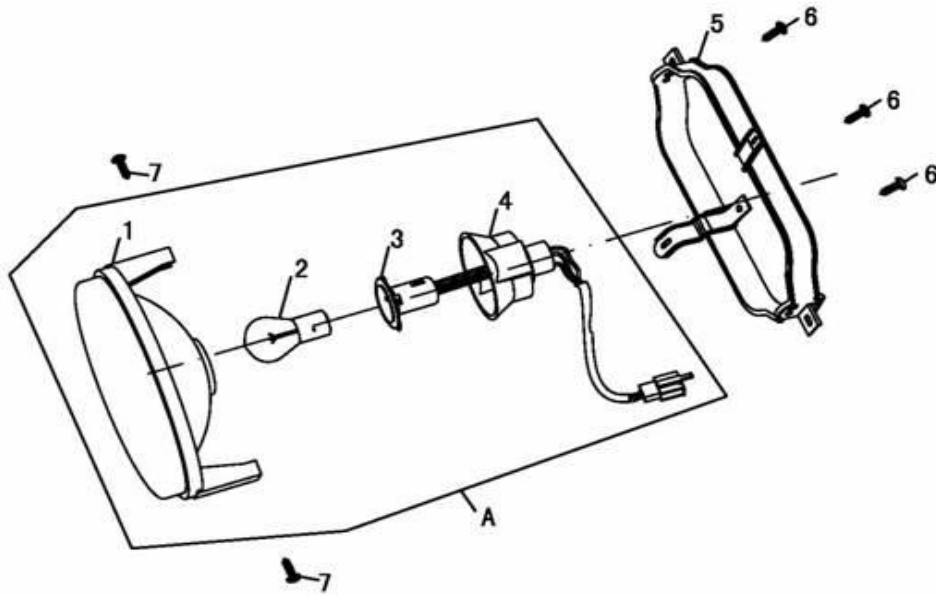
E-08 Fan Cover Generator

REF.NO.	PART NO.	DESCRIPTION	Q.T.Y
1	E0801	MAGNETO	1
2	E0802	FLYWHEEL COVER	1
3	E0803	ROTOR COIL	1
4	E0804	NUT FLANGE M10	1
5	E0805	SCREW HEX 5X12	2
6	E0806	SCREW M6X22	2
7	E0807	FAN COMP COOLING	1
8	E0808	BOLT FLANGE SH 6X18	4
9	E0809	GROM B SIDE PNL	1
10	E0810	BOLT FLANGE SH 6X25	3
11	E0811	SCREW TAPPING 5X16	2
12	E0812	SHROUD ASSY, A	1
13	E0813	SHROUD, A	1
14	E0814	NUT CLIP 6MM	2
15	E0815	SHROUD ASSY, B	1
16	E0816	SHROUD, B	1
17	E0817	BOX TENSIONER LIFTER	1
18	E0818	CLIP, VACUUM TUBE	1
19	E0819	NUT CLIP 6MM	1
20	E0820	SCREW TAPPING 4X12	2
21	E0821	SCREW 6X16	2
22	E0822	OIL SEAL , COVER	1
23	E0823	STAY FENDER	1
24	E0824	SCREW FLANGE M6X12	1
25	E0825	COVER ASSY , FAN	1



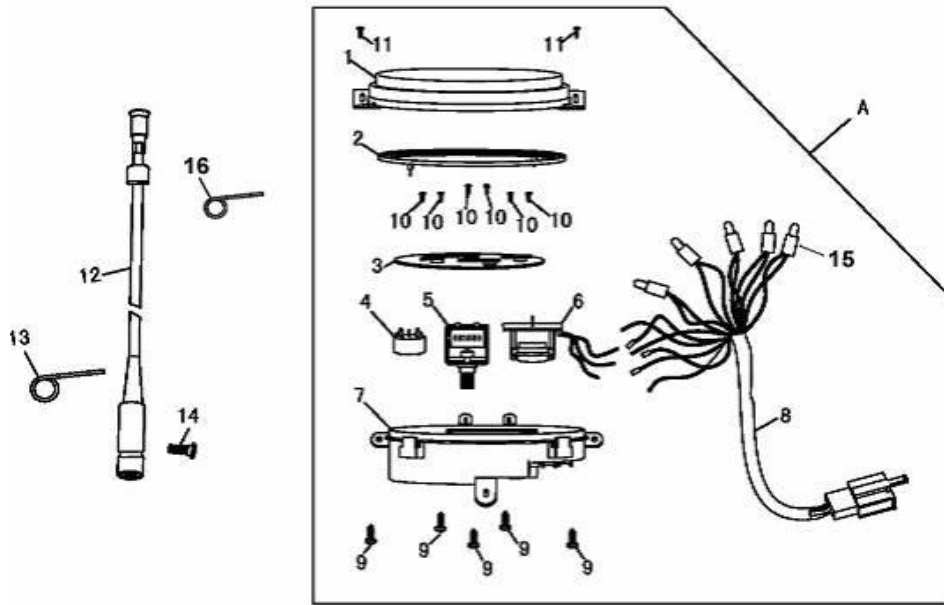
E-09 Transmission

REF.NO.	PART NO.	DESCRIPTION	Q.T.Y
1	E0901	CASE SET, HEADSTOCK	1
2	E0902	COVER, HEADSTOCK	1
3	E0903	PIN ,BRAKE SHOE ANCHOR	1
4	E0904	O RING 7.5X1.5	1
5	E0905	NUT FLANGE M8	1
6	E0906	BALL 6004	1
7	E0907	BALL 6201	2
8	E0908	COUNTERSHAFT SET	1
9	E0909	WASHER SIDE 12	1
10	E0910	SHAFT FINAL	1
11	E0911	CIRCLIP 20MM	1
12	E0912	GEAR FINAL	1
13	E0913	OIL SEAL 27X42X7	1
14	E0914	GASKET HEADSTOCK	1
15	E0915	SHAFT, DRIVE	1
16	E0916	DOWEL PIN 10X20	2



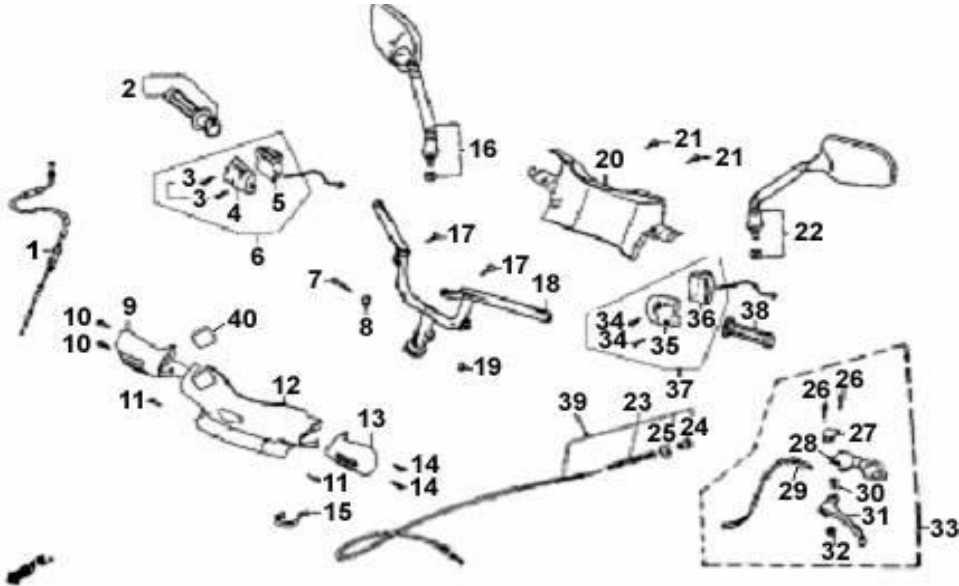
F-1 Head Light

REF.NO.	PART NO.	DESCRIPTION	Q.T.Y
A	F01A	HEADLAMP ASSY	1
1	F0101	COVER , HEADLAMP FR	1
2	F0102	BULB	1
3	F0103	SOCKET, LAMP	1
4	F0104	RUBBER, SOCKET	1
5	F0105	BRACKT, HEADLAMP	1
6	F0106	SCREW ST4.8X13	3
7	F0107	BOLT M5X8	2



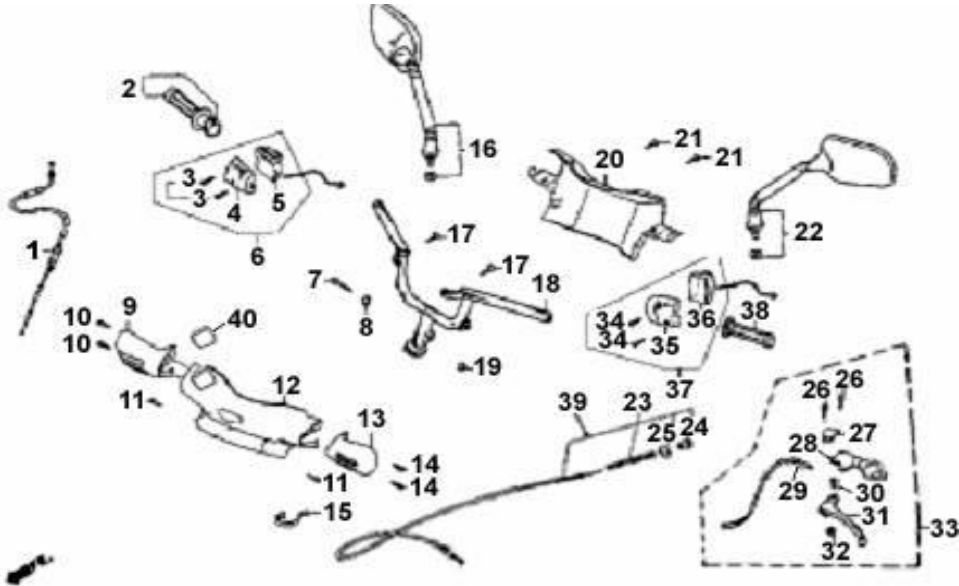
F-2 Speedometer

REF.NO.	PART NO.	DESCRIPTION	Q.T.Y
A	F02A	METER ASSY.	1
1	F0201	COVER, METER	1
2	F0202	RING, METER PLATE	1
3	F0203	METER PLATE	1
4	F0204	SPEEDOMETER	1
5	F0205	MILEAGE METER	1
6	F0206	FUEL METER	1
7	F0207	BOTTOM COVER, METER	1
8	F0208	CABLE,METER	1
9	F0209	SCREW ST4.8X16	5
10	F0210	SCREW ST2.5X5	6
11	F0211	SCREW ST3.9X12	2
12	F0212	TUBE, MILEAGER METER	1
13	F0213	CLAMP, CABLE	1
14	F0214	SCREW M5X18	1
15	F0215	BULB, METER	5
16	F0216	CLIP, MILEAGE METER UP	1



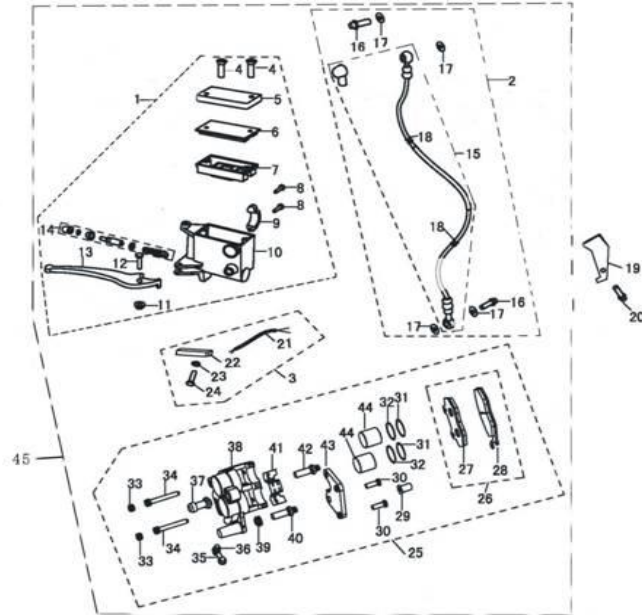
F-3 Handle Steering

REF.NO.	PART NO.	DESCRIPTION	Q.T.Y
1	F0301	CABLE,THROTTLE	1
2	F0302	JACKET, THROTTLE	1
3	F0303	SCREW M5X25	2
4	F0304	SOCKET,UPPER	1
5	F0305	SOCKET,LOWER	1
6	F0306	BRAKE ASSY.RH b	1
7	F0307	BOLT M10X45	1
8	F0308	BUSHING	1
9	F0309	PROTECT,HANDLE(RH)	1
10	F0310	SCREW ST3.9X12	2
11	F0311	BOLT M6X10	2
12	F0312	COVER,TURNING FR	1
13	F0313	PROTECT HANDLE(LH)	1
14	F0314	SCREW ST 3.9X12	2
15	F0315	CLAMP	1
16	F0316	MIRROR LH&RH	1
17	F0317	SCREW ST3.9X12	2
18	F0318	STEERING HANDLE	1
19	F0319	NUT M10	1
20	F0320	METER COVER	1
21	F0321	SCREW ST3.9X12	2
22	F0322	MIRROR LH&RH	1
23	F0323	RETURNED SPRING	1
24	F0324	ADJUST NUT	1
25	F0325	TUBE	1



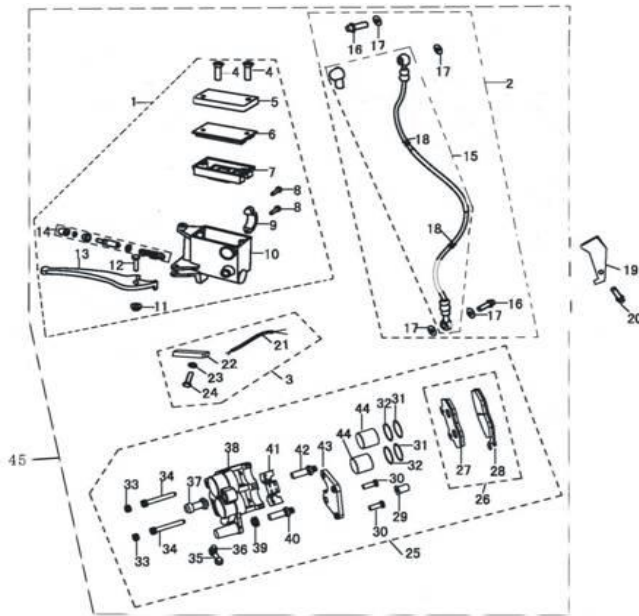
F-3 Handle Steering

REF.NO.	PART NO.	DESCRIPTION	Q.T.Y
26	F0326	BOLT M6X25	2
27	F0327	UPPER PRESSURE, STEERING BAR	1
28	F0328	LOWER PRESSURE, STEERING BAR	1
29	F0329	CABLE, BRAKE	1
30	F0330	BOLT M5X25	1
31	F0331	HANDLE, BRAKE RH	1
32	F0332	NUT M5	1
33	F0333	HANDLE ASSY, LH	1
34	F0334	SCREW M5X35	2
35	F0335	SOCKET, LH BRAKE UP	1
36	F0336	SOCKET, LH BRAKE LOW	1
37	F0337	BRAKE ASSY LH	1
38	F0338	LEVER, LH	1
39	F0339	CABLE, REAR BRAKE	1
40	F0340	VIEW WINDOW, DISK BRAKE	1



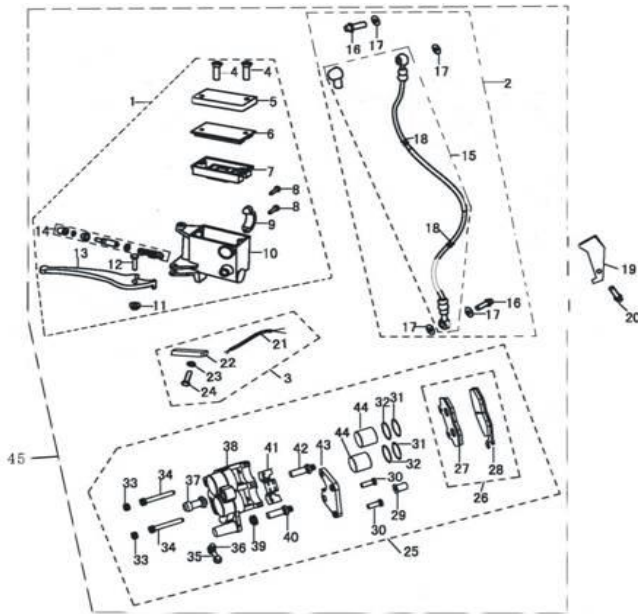
F-4 Front Brake Assy.

REF.NO.	PART NO.	DESCRIPTION	Q.T.Y
1	F0401	Main assy. Front brake	1
2	F0402	Brake pipe assy, front	1
3	F0403	Switch assy, brake	1
4	F0404	Screw M5x25	2
5	F0405	Cover, liquid box	1
6	F0406	Bracket, seal screen	1
7	F0407	Seal screen	1
8	F0408	Bolt M6×22	2
9	F0409	Holder, socket	1
10	F0410	Pump , brake	1
11	F0411	Nut M6	1
12	F0412	Bolt M6x30	1
13	F0413	Brake lever	1
14	F0414	Piston assy	1



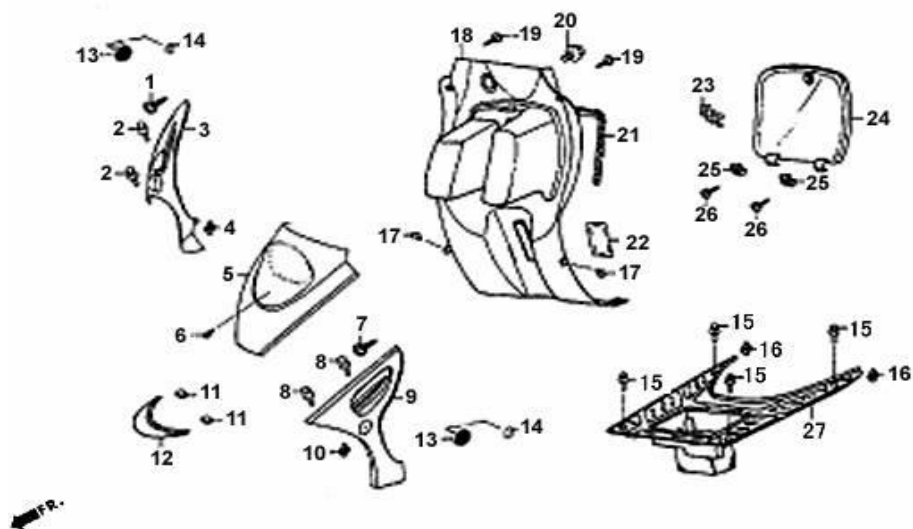
F-4 Front Brake Assy.

REF.NO.	PART NO.	DESCRIPTION	Q.T.Y
15	F0415	Pipe assy. Brake	1
16	F0416	Bolt	2
17	F0417	Washer	4
18	F0418	Ring	2
19	F0419	Clamp	1
20	F0420	Screw M6x10	1
21	F0421	Cable, brake	1
22	F0422	Switch, brake	1
23	F0423	Washer 4	1
24	F0424	Screw M4x12	1
25	F0425	Pump assy. lower	1
26	F0426	Brake pad, assy	1
27	F0427	Brake pad LH	1
28	F0428	Brake pad RH	1



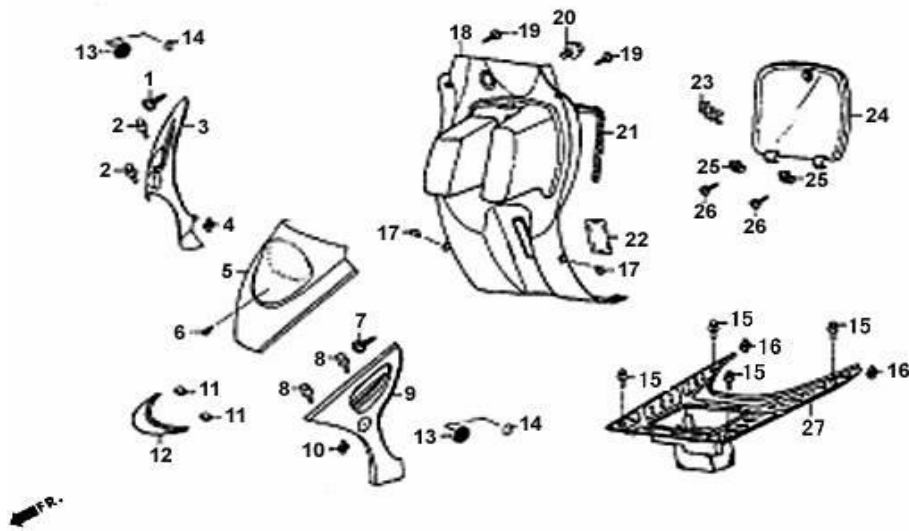
F-4 Front Brake Assy.

REF.NO.	PART NO.	DESCRIPTION	Q.T.Y
29	F0429	Special nut	1
30	F0430	Bolt M8x30	2
31	F0431	Seal ring, piston outside	2
32	F0432	Seal ring, piston inside	2
33	F0433	Screw	2
34	F0434	Bolt brake tongs	2
35	F0435	Screw, oil drain pump	1
36	F0436	Cover, oil drain screw	1
37	F0437	Rubber cover	1
38	F0438	Pump lower	1
39	F0439	Seal ring	1
40	F0440	Sliding axle, lower	1
41	F0441	Located sheet, brake	1
42	F0442	Sliding axle, upper	1
43	F0443	Install board	1
44	F0444	Piston	2
45	F0445	Disk brake	1



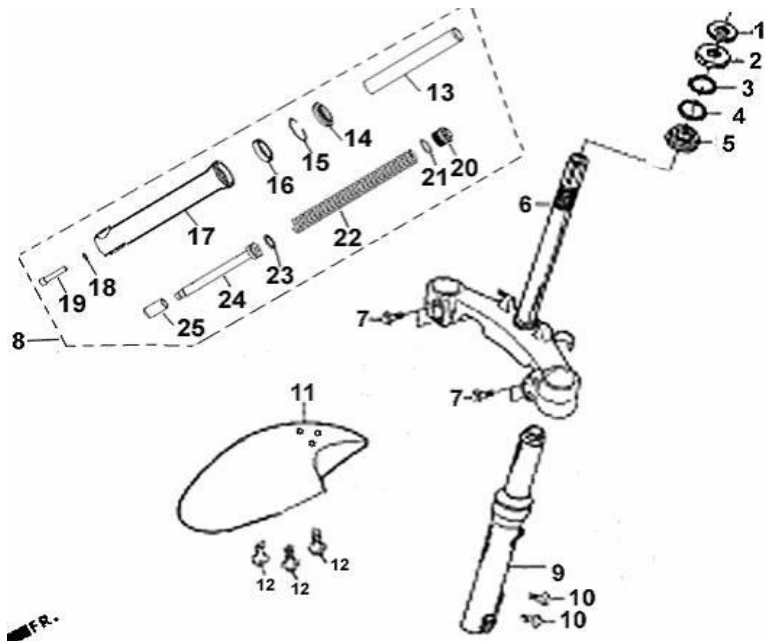
F-5 Front Cover Body Floor Panel

REF.NO.	PART NO.	DESCRIPTION	Q.T.Y
1	F0501	Screw st3.9x13	1
2	F0502	Bolt M6x20	2
3	F0503	Safe bar, front RH	1
4	F0504	reed	1
5	F0505	Cover, front	1
6	F0506	Screw M6x12	1
7	F0507	Screw st3.9x12	1
8	F0508	Bolt M6x12	2
9	F0509	Safe bar ,front& LH	1
10	F0510	Reed	1
11	F0511	Clip, Flow-guide cover	3
12	F0512	Flow-guide cover	1
13	F0513	Reflector , LH&RH	2
14	F0514	Nut M6	2
15	F0515	Nut M6x12	4
16	F0516	Reed	2
17	F0517	Bolt M6x16	2
18	F0518	Luggage box, front	1
19	F0519	Screw ST3.9X12	2
20	F0520	Bolt M6x16	1



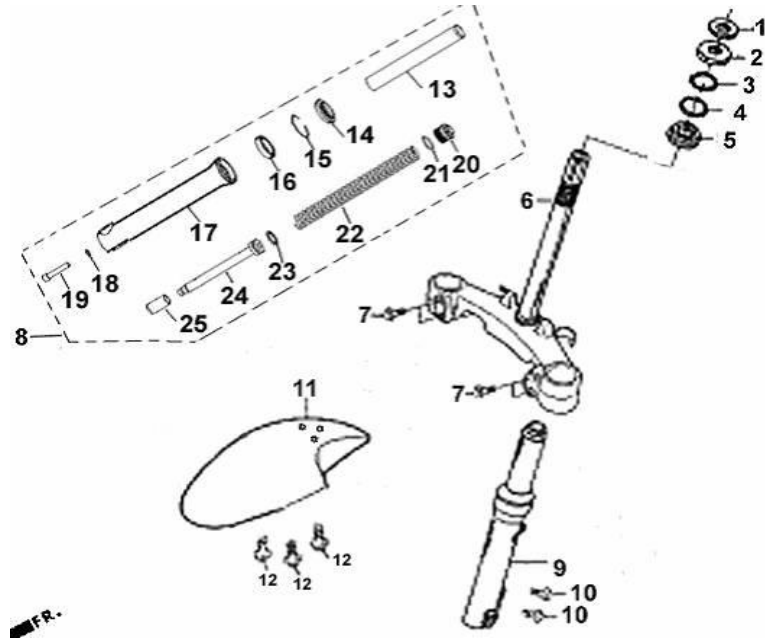
F-5 Front Cover Body/Floor Panel

REF.NO.	PART NO.	DESCRIPTION	Q.T.Y
21	F0521	Sponge	1
22	F0522	Small cover	1
23	F0523	Hook	1
24	F0524	Cover, luggage box front	1
25	F0525	Rocker, luggage box	2
26	F0526	Screw ST3.9X12	2
27	F0527	Foot pedal	1



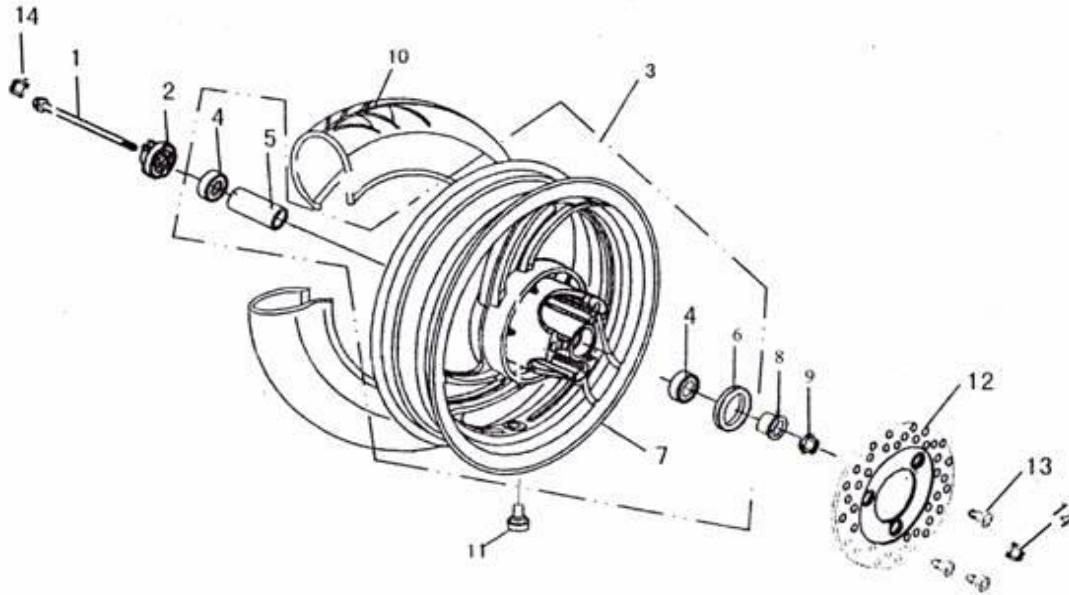
F-6 Front Absorber

REF.NO.	PART NO.	DESCRIPTION	Q.T.Y
1	F0601	Locknut	1
2	F0602	Steel-socket	1
3	F0603	Steelball, upper	1
4	F0604	Steelball lower	1
5	F0605	Steel-socket	1
6	F0606	Steering pole	1
7	F0607	Screw M8x40	4
8	F0608	Shock absorber, front,RH	1
9	F0609	Shock absorber, FR& LH	1
10	F0610	Bolt M8x32	2
11	F0611	Fender front	1
12	F0612	Bolt M6x14	4
13	F0613	Pipe, inside fork FR	1
14	F0614	Dirt-proof cover, fork FR	1
15	F0615	Circlip	1
16	F0616	Oil seal	1



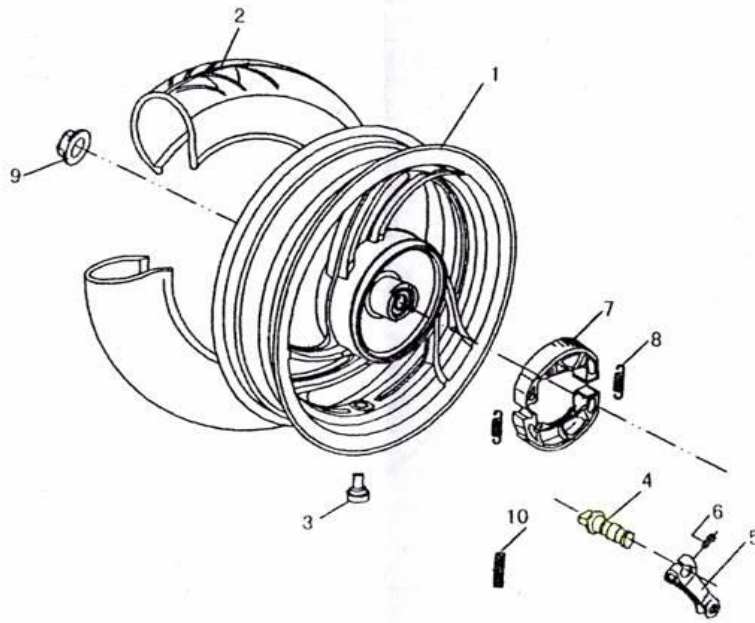
F-6 Front Absorber

REF.NO.	PART NO.	DESCRIPTION	Q.T.Y
17	F0617	Front absorber tube	1
18	F0618	Washer, Seal	1
19	F0619	Bolt	1
20	F0620	Special nut	1
21	F0621	O-ring	1
22	F0622	Main spring	1
23	F0623	Ring, piston	1
24	F0624	Plug	1
25	F0625	Joint	1



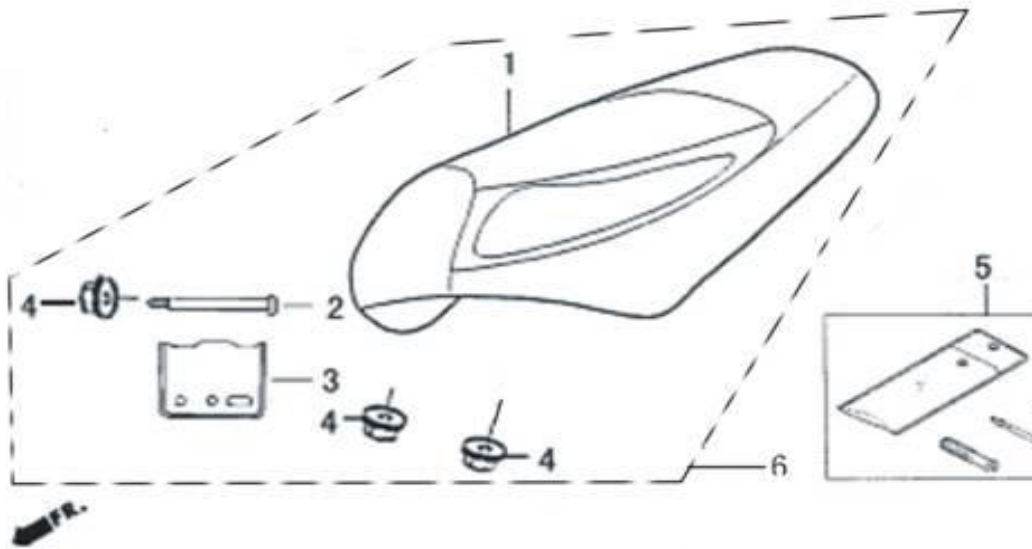
F-7 Front Wheel

REF.NO.	PART NO.	DESCRIPTION	Q.T.Y
1	F0701	Wheelshaft, front	1
2	F0702	Counter	1
3	F0703	Rim assy. Front wheel	1
4	F0704	Ball 6201	2
5	F0705	Bushing middle	1
6	F0706	Oil seal	1
7	F0707	Front rim	4
8	F0708	Bushing	1
9	F0709	Nut M12	1
10	F0710	Tire 130/70-12	30
11	F0711	Breather, valve	1
12	F0712	Disk brake	1
13	F0713	Bolt, disk brake	3
14	F0714	Capφ14	2



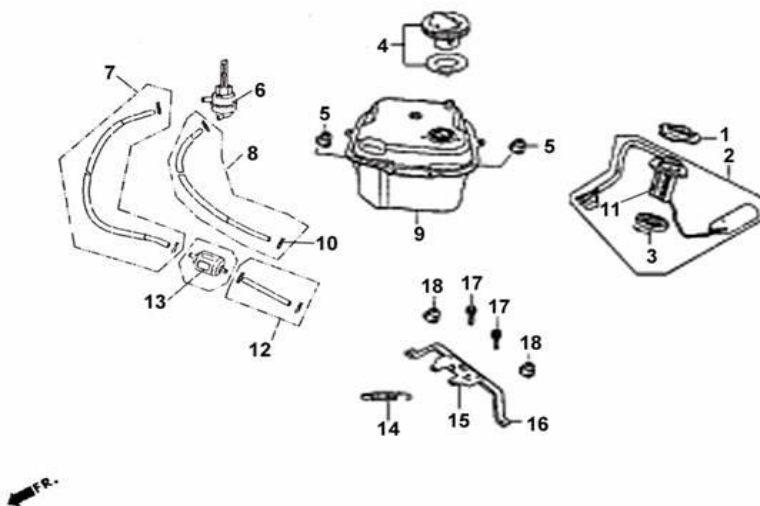
F-8 Rear Wheel

REF.NO.	PART NO.	DESCRIPTION	Q.T.Y
1	F0801	Rear rim	4
2	F0802	Tire	1
3	F0803	Breather, valve	1
4	F0804	Camshaft, rear brake	1
5	F0805	Rocker, rear brake	1
6	F0806	Bolt M6x20	1
7	F0807	Brake pad, rear	1
8	F0808	Spring	2
9	F0809	Nut M16x1.5	1
10	F0810	SPRING	1



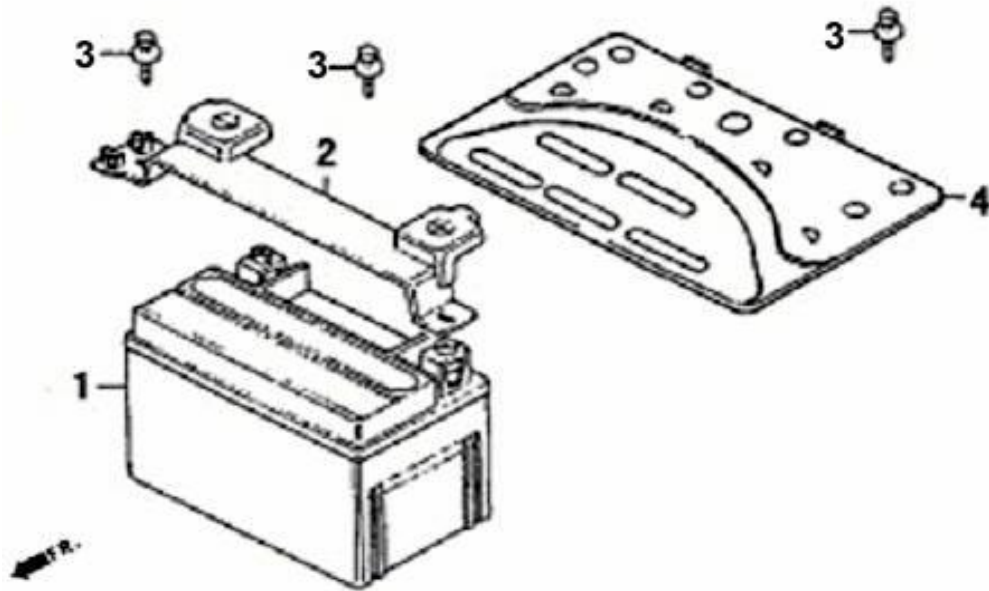
F-9 Cushion

REF.NO.	PART NO.	DESCRIPTION	Q.T.Y
1	F0901	Cushion	1
2	F0902	Axle	1
3	F0903	Rear plate, cushion	1
4	F0904	NUT M6	3
5	F0905	TOOLS	1
6	F0906	SEATS	1



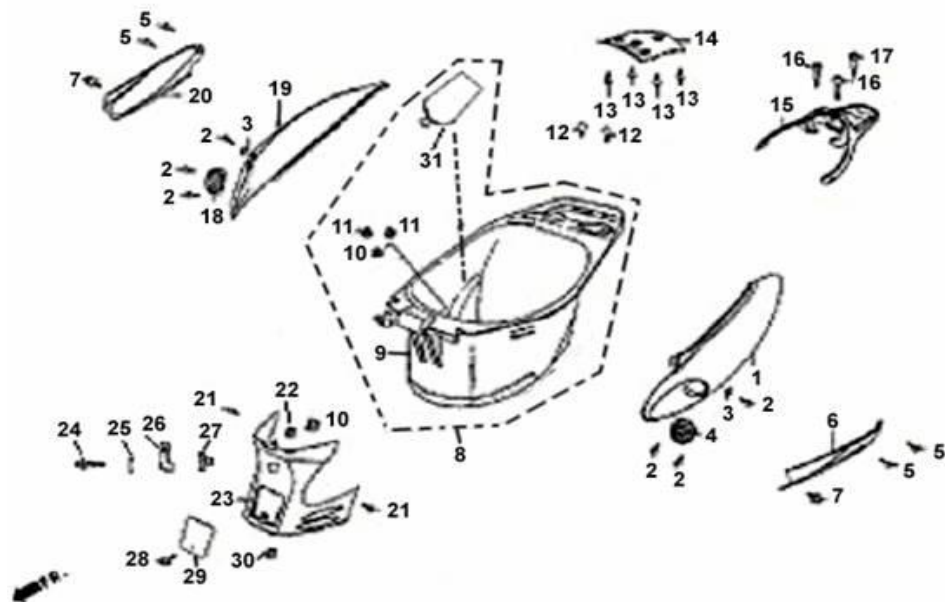
F-10 Fuel Tank

REF.NO.	PART NO.	DESCRIPTION	Q.T.Y
1	F1001	Holder, oil sensor	1
2	F1002	Sensor assy. Oil	1
3	F1003	Seal washer	1
4	F1004	Oil tank cover	1
5	F1005	Nut M6	2
6	F1006	Switch, Oil drain	1
7	F1007	Oil pipe	1
8	F1008	Pipe	1
9	F1009	Tank oil	1
10	F1010	Ring	1
11	F1011	Oil sensor	
12	F1012	Vice-pipe	1
13	F1013	Oil filter	1
14	F1014	Spring	1
15	F1015	Lock socket, cushion	1
16	F1016	Install board	1
17	F1017	Bolt M6x16	2
18	F1018	Nut M6	2



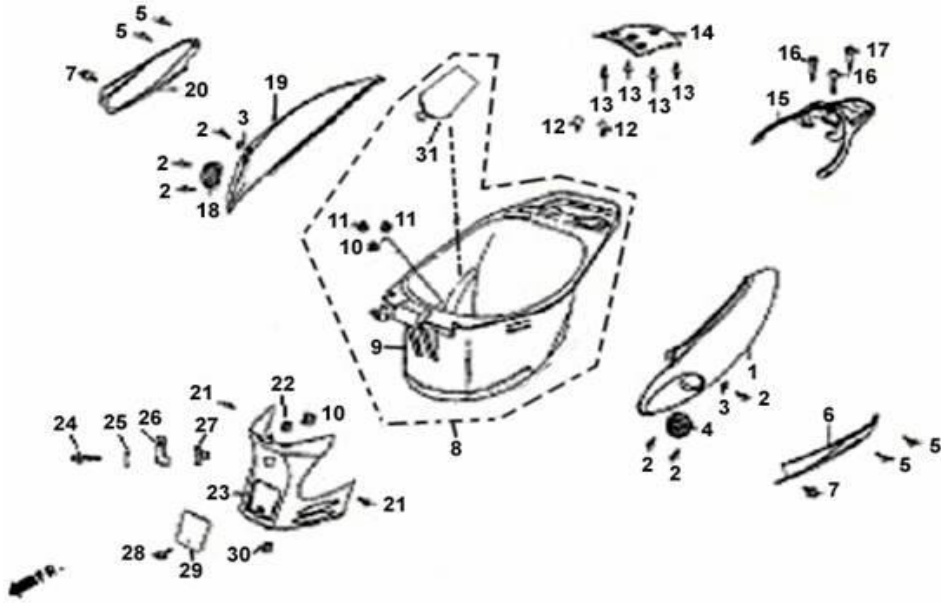
F-11 Battery

REF.NO.	PART NO.	DESCRIPTION	Q.T.Y
1	F1101	Battery	1
2	F1102	Fasten bar	1
3	F1103	Screw M5x12	3
4	F1104	Lid, battery	1



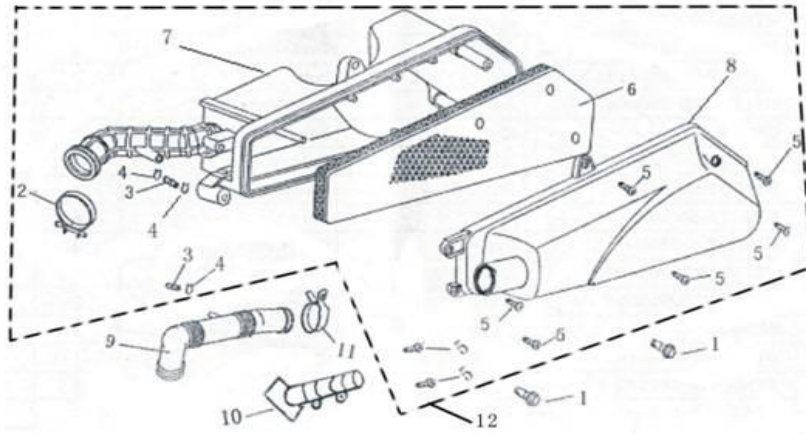
F-12 Body Cover Luggage Box

REF.NO.	PART NO.	DESCRIPTION	Q.T.Y
1	F1201	Sideboard, left	1
2	F1202	Screw ST3.9X13	6
3	F1203	Clip	2
4	F1204	Cover, wind blow	1
5	F1205	Screw ST4.8X16	4
6	F1206	Shield bar, LH RR	1
7	F1207	Bolt M6x12	2
8	F1208	Luggage box assy.	1
9	F1209	Luggage box	1
10	F1210	Screw M6x20	2
11	F1211	Nut M6	2
12	F1212	Bolt M6x12	2
13	F1213	Nut ST3.9X13	4
14	F1214	Protect bar	1
15	F1215	Bracket	1
16	F1216	Bolt M8x45	2
17	F1217	Bolt M8x40	1
18	F1218	Cover, ventilation air RH	1



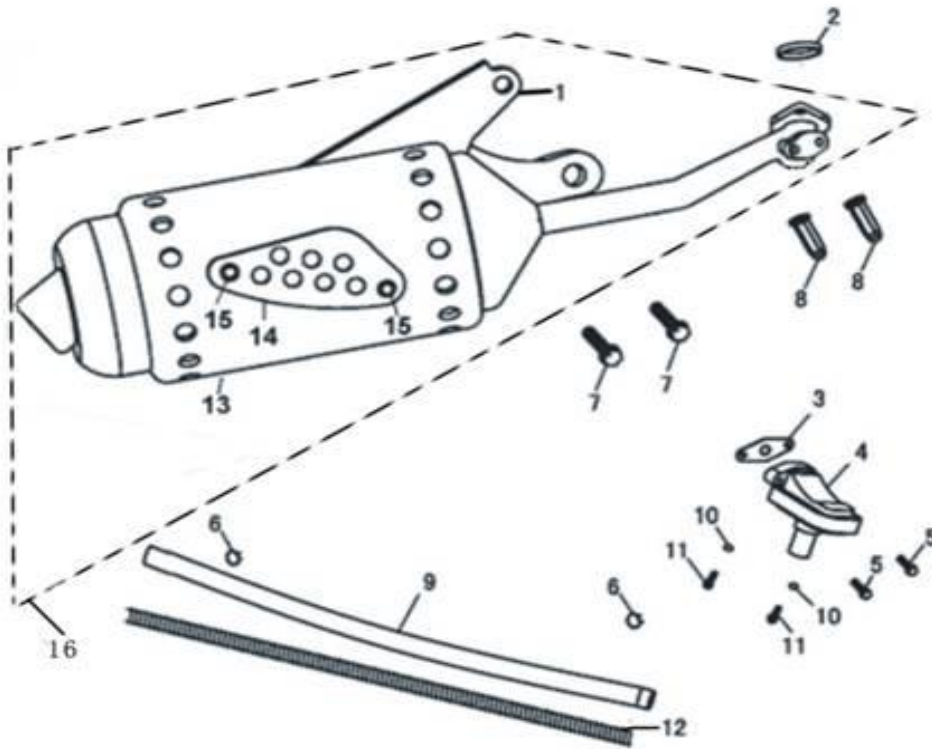
F-12 Body Cover Luggage Box

REF.NO.	PART NO.	DESCRIPTION	Q.T.Y
19	F1219	Sideboard, RH	1
20	F1220	Protect bar, RH	1
21	F1221	Screw ST3.9X13	2
22	F1222	Nut M6	1
23	F1223	Front Cover, luggage box	1
24	F1224	Bolt M6x16	1
25	F1225	Plain washer	1
26	F1226	Hook	1
27	F1227	Nut M6	1
28	F1228	Screw ST4.8X13	1
29	F1229	Window, cylinder view	1
30	F1230	Clip	1
31	F1231	Inner cover, luggage box	1



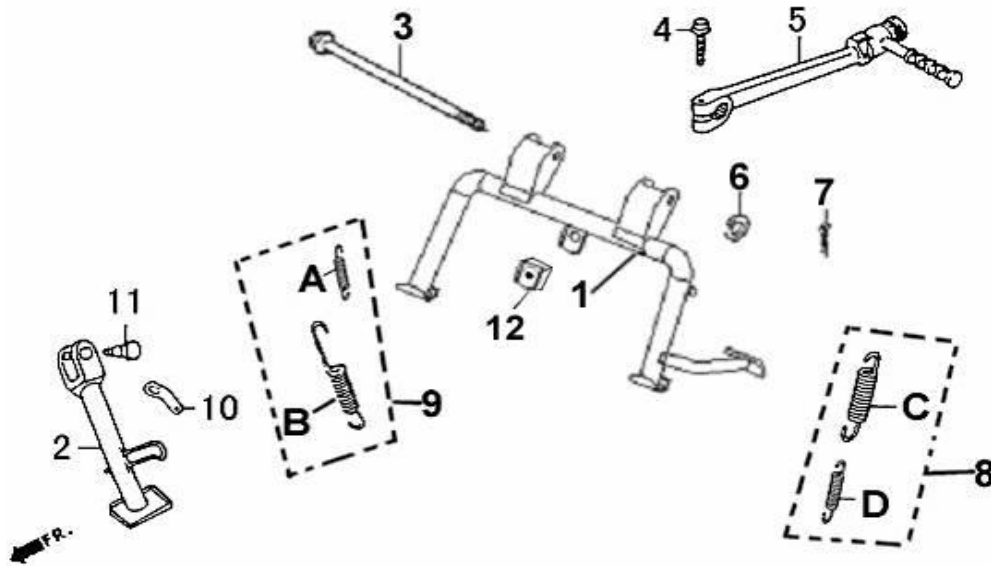
F-13 Air Cleaner

REF.NO.	PART NO.	DESCRIPTION	Q.T.Y
1	F1301	BOLT M6×30	2
2	F1302	HOOP,TUBE	2
3	F1303	TUBE	2
4	F1304	CLIP,	3
5	F1305	SCREW ST4.2×19	8
6	F1306	ELEMENT, AIR/C	1
7	F1307	CASE, AIR/C	1
8	F1308	COVER, COMP AIR/C	1
9	F1309	INLET TUBE	1
10	F1310	BREATHER TUBE	1
11	F1311	CLIP	1
12	F1312	AIR CLEANER	1



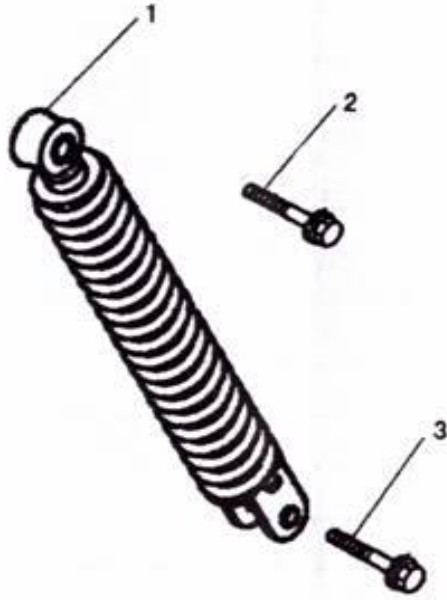
F-14 Exhaust Muffler

REF.NO.	PART NO.	DESCRIPTION	Q.T.Y
1	F1401	MUFFLER ASSY	1
2	F1402	GASKET ASBESTOS	1
3	F1403	GASKET	1
4	F1404	VALVE SECOND AIR IN	1
5	F1405	BOLT M6X12	2
6	F1406	CLAMP	2
7	F1407	BOLT M8×35	2
8	F1408	NUT CAP M6	2
9	F1409	RUBBER PIPE	1
10	F1410	SPRING WASHER	2
11	F1411	BOLT M6×20	2
12	F1412	SPRING	1
13	F1413	COVER, DECORATION INNER	10
14	F1414	COVER, DECORATION OUTER	10
15	F1415	BOLT M6X12	2
16	F1416	EXHAUST ASSY.	1



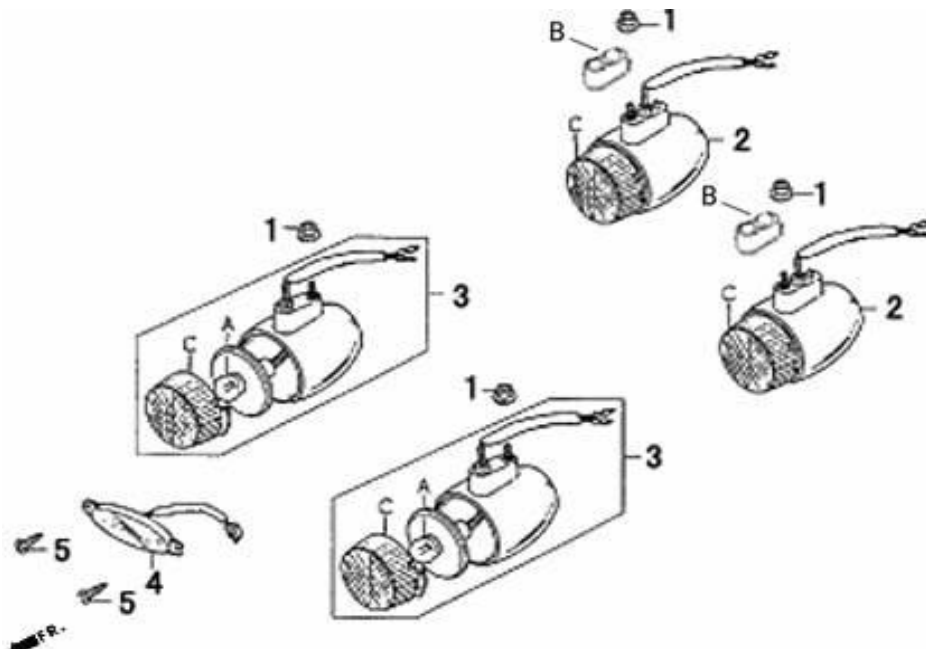
F-15 Kick Start Arm Stand

REF.NO.	PART NO.	DESCRIPTION	Q.T.Y
1	F1501	MAIN STAND	10
2	F1502	SINGLE STAND	1
3	F1503	AXLE, DOUBLE STAND	1
4	F1504	BOLT M6X25	1
5	F1505	POLE, START	1
6	F1506	PLAIN WASHER 10	1
7	F1507	PIN	1
8	F1508	DOUBLE SPRING, MAIN STAND	1
9	F1509	DOUBLE SPRING, SINGLE STAND	1
10	F1510	JOINT BOARD,SPRING	1
11	F1511	AXLE, SINGLE STAND	1
A	F15A	SPRING,SINGLE STAND	1
B	F15B	SPRING, SING STAND OUTER	1
C	F15C	SPRING, MAIN STAND OUTER	1
D	F15D	SPRING, MAIN STAND INNER	1
12	F1512	RUBBER	1



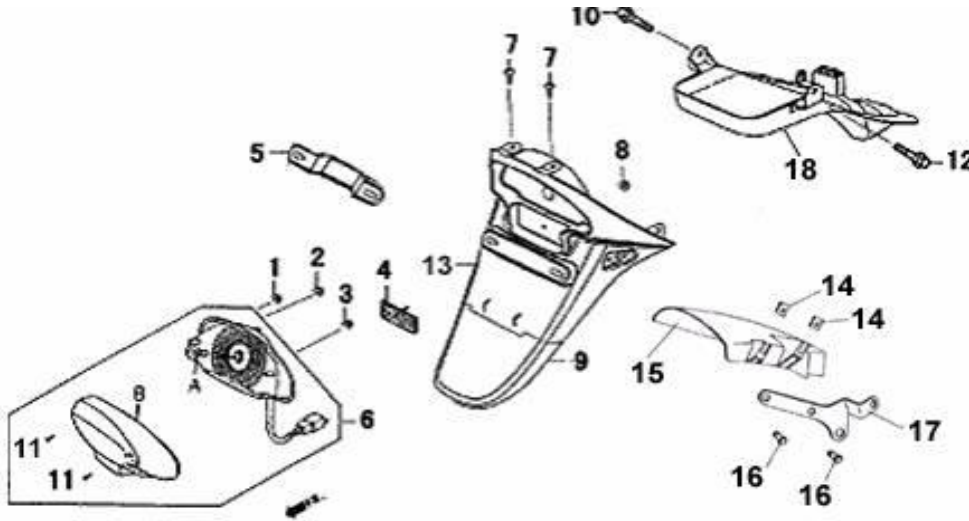
F-16 Rear Cushion

REF.NO.	PART NO.	DESCRIPTION	Q.T.Y
1	F1601	CUSHION ASSY REAR	15
2	F1602	BOLT M10X35	1
3	F1603	BOLT M8X20	1



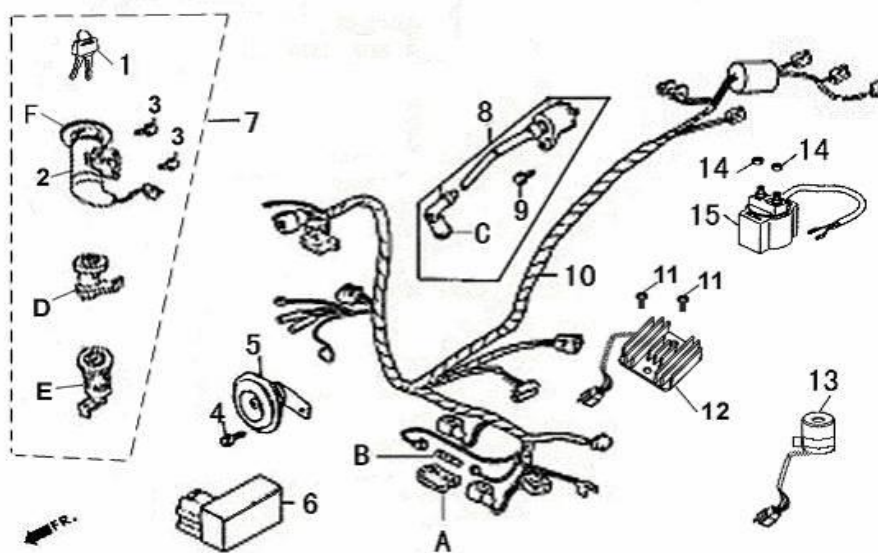
F-17 Signal Light

REF.NO.	PART NO.	DESCRIPTION	Q.T.Y
A	F17A	BULB 12V-10W	4
B	F17B	LIGHT WINKER	2
C	F17C	COVER, LIGHT	4
1	F1701	NUT M5	4
2	F1702	TURN LIGHT LH&LH, RR	2
3	F1703	TURNING LIGHT, LH&RH FR	2
4	F1704	MIST-PROOF LIGHT	1
5	F1705	SCREW ST3.9X13	2



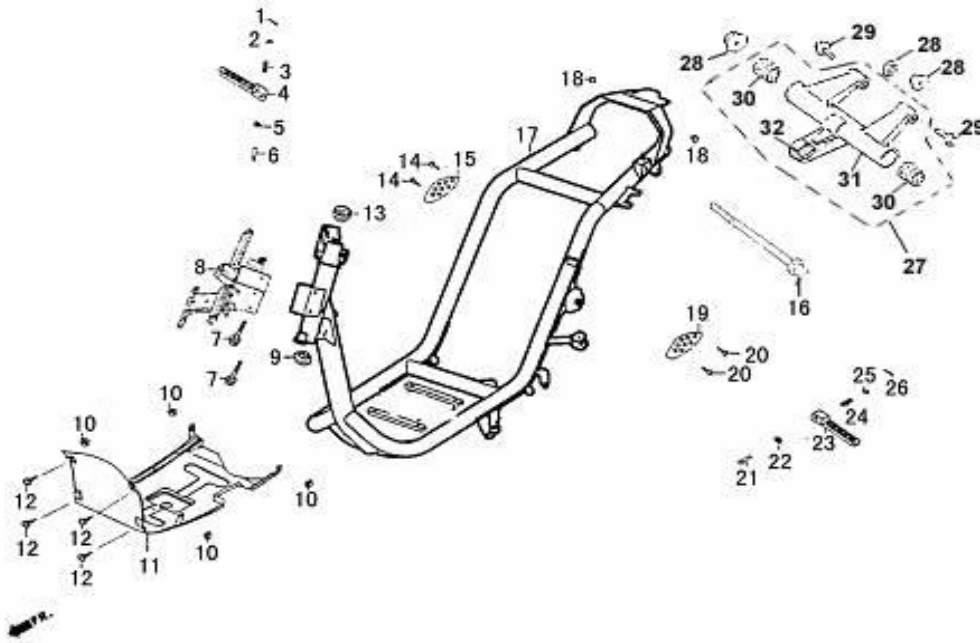
F-18 Tail Light

REF.NO.	PART NO.	DESCRIPTION	Q.T.Y
A	F18A	BULB, LAMP REAR	1
B	F18B	WINKER, TAIL LAMP	1
1	F1801	NUT M5	1
2	F1802	NUT M5	1
3	F1803	NUT M5	1
4	F1804	REFLECTOR	1
5	F1805	BRACKET, LICENSE	1
6	F1806	REAR LIGHT ASSY	1
7	F1807	BOLT M6X12	2
8	F1808	BOLT M5	1
9	F1809	LOWER PLATE, FENDER,RR	1
10	F1810	BOLT M6X16	1
11	F1811	BOLT ST4.2X12	2
12	F1812	BOLT M6X16	1
13	F1813	UPPER PART, FENDER RR	2
14	F1814	WASHER THICK	2
15	F1815	FENDER, SMALL	1
16	F1816	BOLT M6X10	2
17	F1817	BRACKET	1
18	F1818	PLATE, FUEL TANK	1



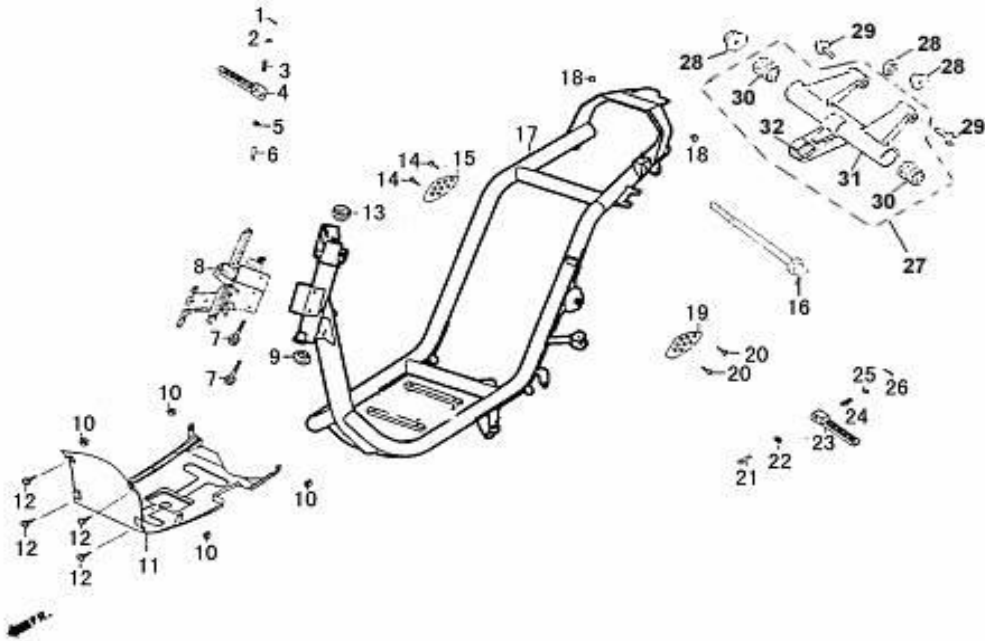
F-19 Wire Harness

REF.NO.	PART NO.	DESCRIPTION	Q.T.Y
A	F19A	BOX,FUSE	1
B	F19B	FUSE	2
C	F19C	CAP, HIGH VOLTAGE	1
D	F19D	LOCK, CUSHION	1
E	F19E	LOCK, BOX FR	1
F	F19F	COVER, KEY	1
1	F1901	KEY	1
2	F1902	SWITCH , IGNITION	1
3	F1903	BOLT M6X16	2
4	F1904	BOLT M6X12	1
5	F1905	HORN	1
6	F1906	IGNITION	1
7	F1907	LOCK SET	5
8	F1908	COIL ASSY. IGNITION	1
9	F1909	BOLT M6X20	1
10	F1910	CABLE ASSY.	1
11	F1911	BOLT M6X16	1
12	F1912	RECTIFIER	20
13	F1913	FLASHER	40
14	F1914	NUT	2
15	F1915	RELAY	1



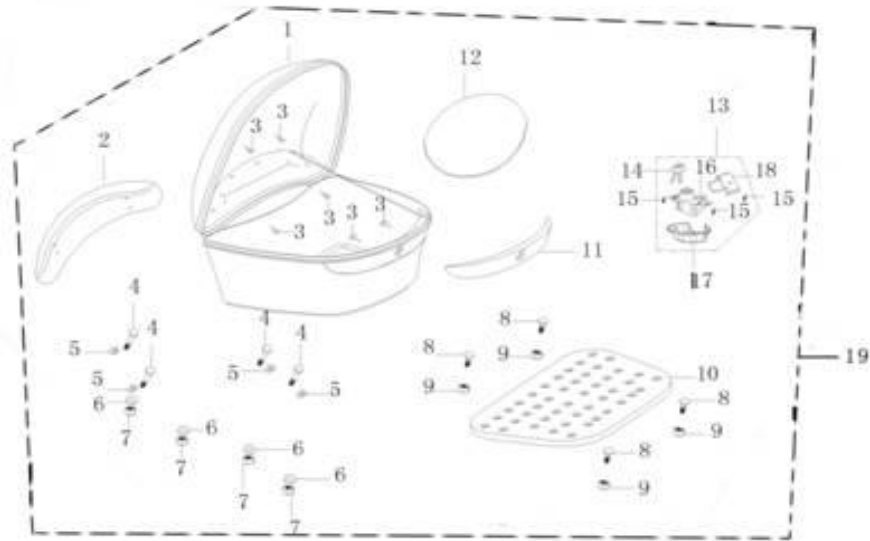
F-20 Frame Body

REF.NO.	PART NO.	DESCRIPTION	Q.T.Y
1	F2001	UNCORK PIN	1
2	F2002	STEELBALL ϕ 6.35	1
3	F2003	SPRING	1
4	F2004	PEDAL, RH	1
5	F2005	PLAIN WASHER	1
6	F2006	PIN	1
7	F2007	BOLT M6X50	2
8	F2008	BRACKET, FR	1
9	F2009	STEELBALL LOWER	1
10	F2010	NUT M6	4
11	F2011	FENDER,	1
12	F2012	NUT ST 3.9X12	4
13	F2013	STEEL-SOCKET, UPPER	1
14	F2014	BOLT M6X12	1
15	F2015	ADORN BOARD, RH	1
16	F2016	AXLE, SWING	1
17	F2017	FRAME	1
18	F2018	NUT M6	2
19	F2019	ADORN BOARD, LH	1
20	F2020	BOLT M6X12	1
21	F2021	PIN	1
22	F2022	PLAIN WASHER	1
23	F2023	PEDAL LH	1



F-20 Frame Body

REF.NO.	PART NO.	DESCRIPTION	Q.T.Y
24	F2024	SPRING	1
25	F2025	STEELBALL ϕ 6.35	1
26	F2026	UNCORK PIN 1.6X20	1
27	F2027	SWING ASSY, ENGINE	10
28	F2028	NUT M10	3
29	F2029	BOLT M10X70	2
30	F2030	TUBE	40
31	F2031	SWING, ENGINE	1
32	F2032	RUBBER	1



F-21 REAR CARRIER

REF.NO.	PART NO.	DESCRIPTION	Q.T.Y
1	F2101	REAR GOODS BOX	1
2	F2102	BACKREST	1
3	F2103	SCREW ST4.8X19	6
4	F2104	BOLT M8X35	4
5	F2105	WASHER	4
6	F2106	PLAIN WASHER 8	4
7	F2107	NUIT M8	4
8	F2108	SCREW M8X24	4
9	F2109	NUT M8	4
10	F2110	FASTEN BOARD	1
11	F2111	REFLECTOR	1
12	F2112	TOOLBOX WASHER	1
13	F2113	LOCK ASSY, BOX	1
14	F2114	KEY	2
15	F2115	BOLT M6X20	3
16	F2116	LOCK BODY	1
17	F2117	COVER, LOCK	1
18	F2118	HOOK	1
19	F2119	REAR GOOS BOX,ASSY.	1



F-22 Mark

REF.NO.	PART NO.	DESCRIPTION	Q.T.Y
1	F2201		1
2	F2202		1
3	F2203		1
4	F2204		1
5	F2205		1
6	F2206		2

