

# JL50QT-6 PARTS EXPLODE DRAWING

Edition No.: 01 , Year: 2007



CIXI KINGRING MOTORCYCLE CO.,LTD.

**INDEX**

E-01 CRANK CASE.....1  
E-02 CYLINDER HEAD COVER·CYLINDER HEAD .....3  
E-03 CYLINDER·CRANK CASE·PISTON .....5  
E-04 RIGHT CRANKCASE COVER .....6  
E-05 CARBURETOR .....7  
E-06 DRIVEN PULLEY .....9  
E-07 STARTING MOTOR·OIL PUMP .....11  
E-08 FAN COVER·GENERATOR .....12  
E-09 TRANSMISSION.....13  
F-01 FRONT WHEEL .....14  
F-02 FRONT FORK .....15  
F-03 OPERATING SYSTEM.....17  
F-04 FRAME BODY.....18  
F-05 FRONT COVER BODY.....20  
F-06 BODY COVER·LUGGAGE BOX.....21  
F-07 AIR CLEANER.....22  
F-08 REAR SHOCK ABSORBER.....23  
F-09 REAR WHEEL .....24  
F-10 FRONT BRAKE SYSTEM .....25  
F-11 FUEL TANK.....28  
F-12 SEAT.....29  
F-13 MUFFLER.....30  
F-14 MAIN STAND ASSY&SIDE STAND ASSY.....31  
F-15 WIRE HARNESS .....32  
F-16 HEAD LIGHT .....33  
F-17 REAR LAMP ASSY.....34  
F-18 FRONT WINKER .....35  
F-19 REAR WINKER .....36  
F-20 METER.....37  
F-21 REAR CARGO BOX.....38

Address: Kingring Developing Zone, Cixi, Ningbo, Zhejiang 315301, P.R.China

Tel:0086 574 63219030, 63218692,63218196;63218672

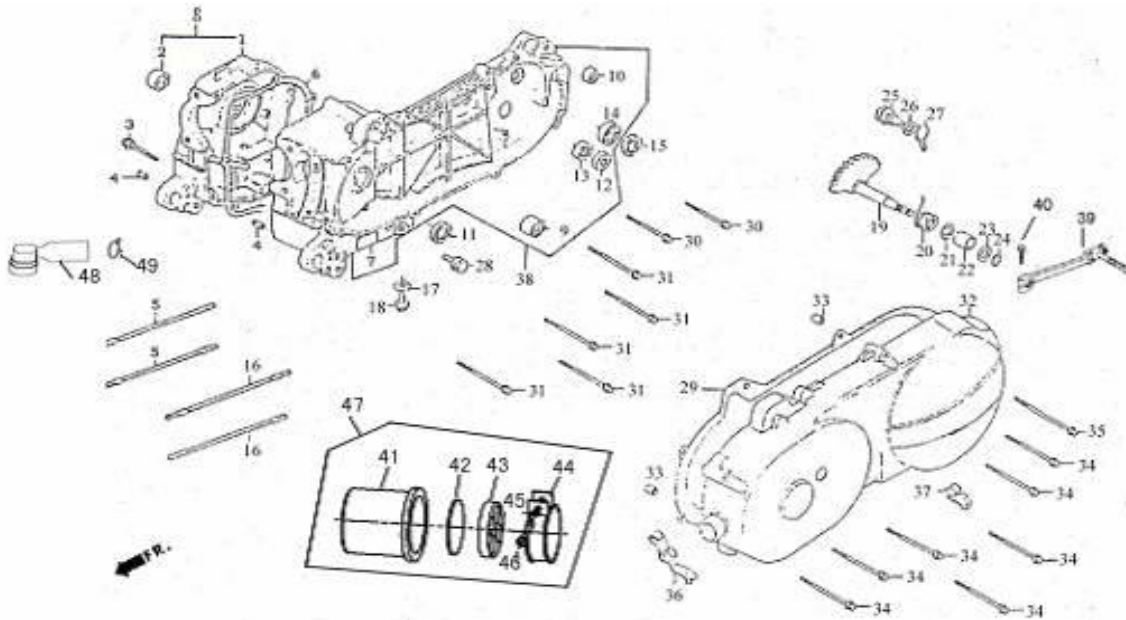
Fax: 0086 574 63218193

E-mail: motor@kingring.com

Website:www.kingringmotor.com; kingring.en.alibaba.com

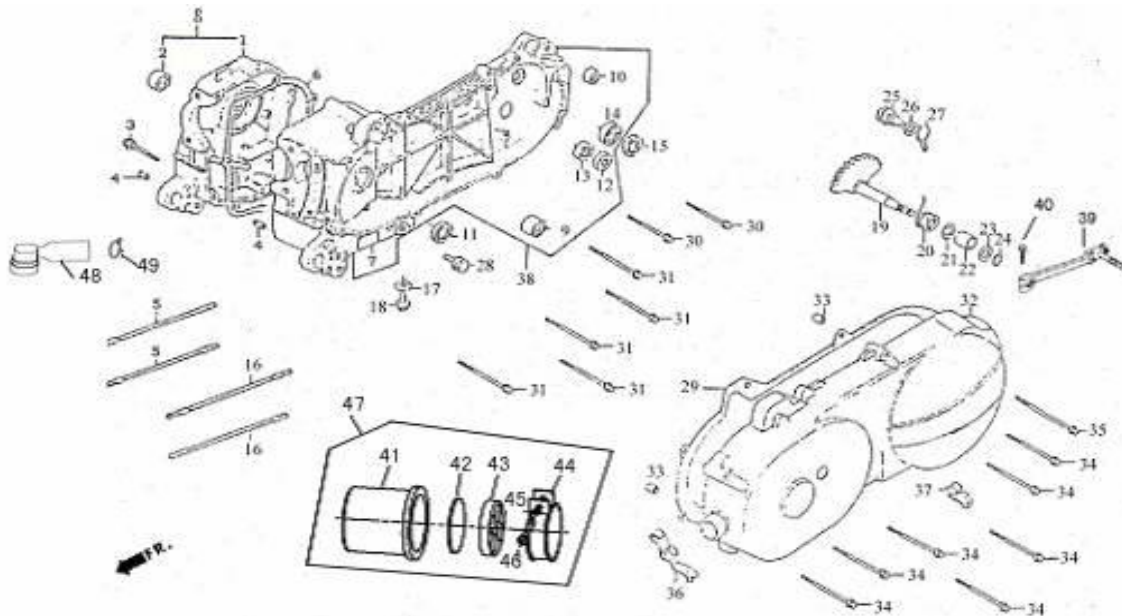
**Attention: Please kindly note the latest unit prices (usd) in the below charts are updated every month according to the latest exchange rate**

<b>MONTH - YEAR:</b>	<b>March . 2014</b>
<b>Current exchange rate:</b>	<b>7,8073</b>



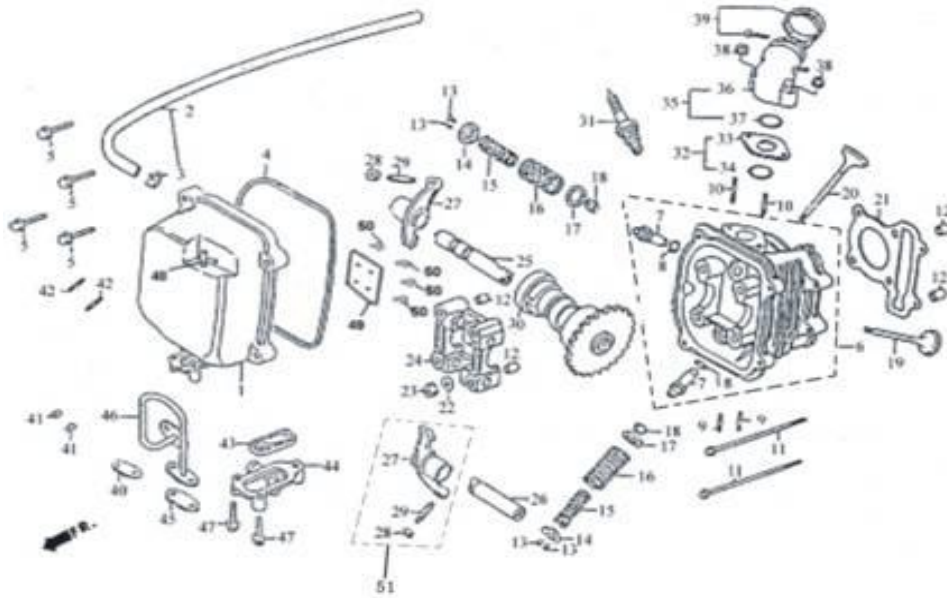
E-01 Crank case

REF.NO.	PART NO.	DESCRIPTION	Q.T.Y
1	E0101	CRANK CASE COMP RIGHT	1
2	E0102	RUB BUSH ENG HANGER	1
3	E0103	BOLT FLANGE SH M6×45	1
4	E0104	DOWEL PIN M8×14	2
5	E0105	BOLT STUD M7×168	2
6	E0106	GASTER CRANK CASE	1
7	E0107	CRANK CASE CIMP LEFT	1
8	E0108	CASE SET R CRANK	1
9	E0109	RUB BUSH ENG HANGER	1
10	E0110	UNDER RUBBER BUSH RR CUSHION	1
11	E0111	OIL SEAL 19.8×30×5	1
12	E0112	BEARING BALL RADIAL 6303	1
13	E0113	BRG BALL RADIAL 6201	1
14	E0114	BRG BALL RADIAL 6203	1
15	E0115	OIL SEAL 17×30×6	1
16	E0116	BOLT STUD 7×176	2
17	E0117	WASHER 8	1
18	E0118	BOLT OIL DRAIN	1
19	E0119	SPINDLE COMP KICK STARTER	1
20	E0120	SPRING KICK RETURN	1
21	E0121	COLLAR KICK BOSS	1
22	E0122	BUSH KICK SPINDLE	1
23	E0123	WASHER KICK SPINDLE	1
24	E0124	CLAMP 14MM	1



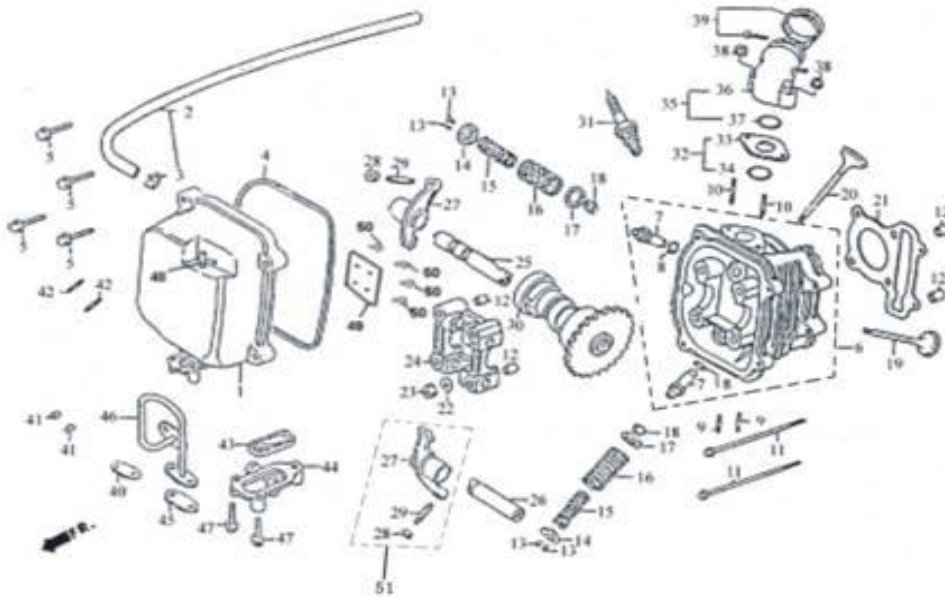
E-01 Crank case

REF.NO.	PART NO.	DESCRIPTION	Q.T.Y
25	E0125	GEAR COMP KICK DRIVEN	1
26	E0126	WASHER THRUST 10	1
27	E0127	SPG KICK DRIVEN GEAR	1
28	E0128	BOLT ASSY DRAIN PLUG	1
29	E0129	GASKET L COVER	1
30	E0130	BOLT FLANGE 8×35	2
31	E0131	BOLT FLANGE 8×40	5
32	E0132	COVER ,LH CRANKCASE	1
33	E0133	DOWEL PIN 8×14	2
34	E0134	BOLT FLANGE 6×35	7
35	E0135	BOLT SPECIAL 8	1
36	E0136	CLAMPER THROTTLE CABLE	1
37	E0137	CLAMPER BRAKE CABLE	1
38	E0138	CRANK CASE SETL	1
39	E0139	KICK STARTER	1
40	E0140	NUT M6×25	1
41	E0141	RUBBER CAP	1
42	E0142	SPONGE	1
43	E0143	RUBBER PLATE	1
44	E0144	CLIP	1
45	E0145	WASHER	1
46	E0146	BOLT M4X35	1
47	E0147	INLET AIR CLEANER ASSY.	1
48	E0148	FILTER	1
49	E0149	CLIP	1



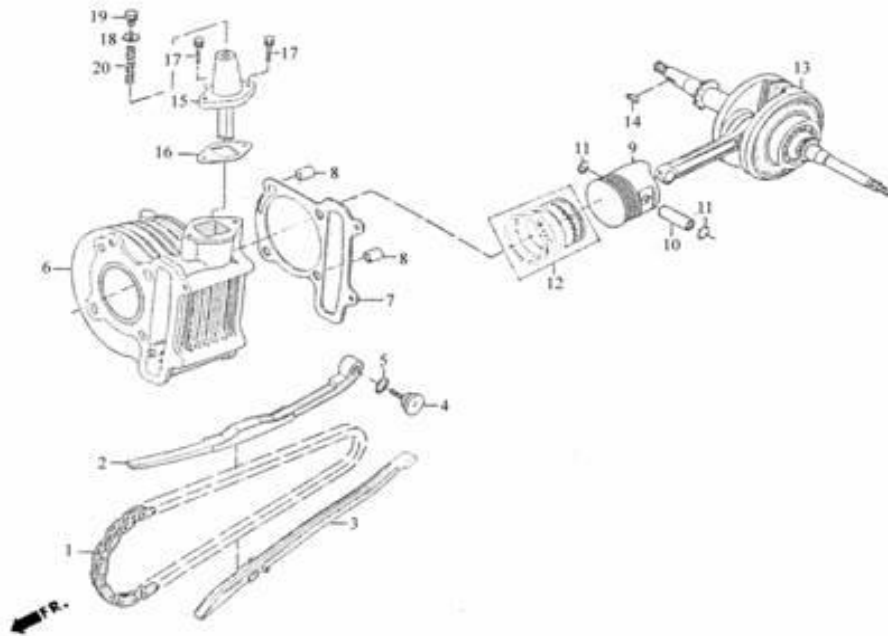
E-02 Cylinder Head Cover-Cylinder Head

REF.NO.	PART NO.	DESCRIPTION	Q.T.Y
1	E0201	COVER COMP HEAD	1
2	E0202	TUBE BREATHER	1
3	E0203	CLIP B8 TUBE	1
4	E0204	GASKET HEAD COVER	1
5	E0205	BOLT FLANGE SH 6X25	4
6	E0206	HEAD COMP CYLN	1
7	E0207	GUIDE VALVE	2
8	E0208	O-RING 9X1.6	2
9	E0209	BOLT STUD 6X32	2
10	E0210	BOLT STUD II 6X50	2
11	E0211	BOLT FLANGE 6X85	2
12	E0212	PIN DOWEL SPECIAL 8X14	4
13	E0213	COTTER VALVE	4
14	E0214	RETAINER VALVE SPRING	2
15	E0215	SPG VALVE INNER	2
16	E0216	SPRING VALVE OUTER	2
17	E0217	SEAT VALVE SPG OUTER	2
18	E0218	SEAT VALVE STEM	2
19	E0219	VALVE EXHAUST	1
20	E0220	VALVE INLET	1
21	E0221	GASKET CYLINDER HEAD	1
22	E0222	WASHER SERALING 7MM	4
23	E0223	NUT FLANGE 7M/M	4
24	E0224	HOLDER CAM SHAFT	1
25	E0225	SHAFT COMP IN ROCKER ARM	1



E-02 Cylinder Head Cover-Cylinder Head

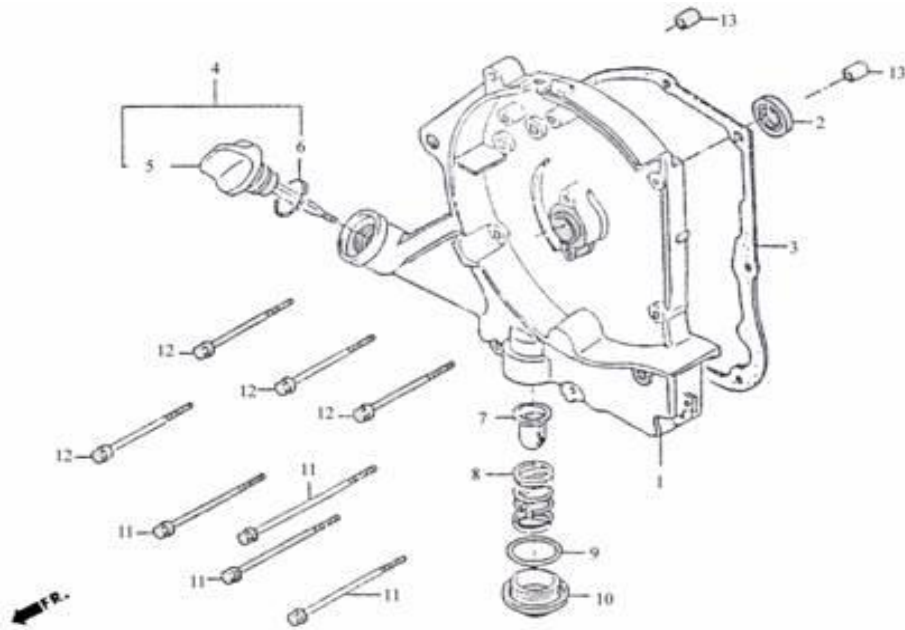
REF.NO.	PART NO.	DESCRIPTION	Q.T.Y
26	E0226	SHAFT, ROCKER ARM, VALVE	1
27	E0227	ARM ROCKER, VALVE	2
28	E0228	NUT TAPPET	2
29	E0229	SCREW TAPPET ADJUSTING	2
30	E0230	SHAFT COMP CAM	1
31	E0231	SPARK PLUG(C7HSA)	1
32	E0232	INSULATOR CARB ASSY	1
33	E0233	INSULATOR CARB	1
34	E0234	O-RING 20.6X1.9	1
35	E0235	PIPE ASSY INLET	1
36	E0236	PIPE COMP INLET	1
37	E0237	O-RING 20.6X1.9	1
38	E0238	NUT FLANGE 6MM	2
39	E0239	BAND INSULATOR	1
40	E0240	GAKT A/IPPIPE	1
41	E0241	NUT HEX CAP 6MM	2
42	E0242	BOLT STUD 6X16	2
43	E0243	REED VALVE COMP	1
44	E0244	COVER REED VALVE	1
45	E0245	GAKT A/I PIPE	1
46	E0246	PIPE COMP AIR	1
47	E0247	BOLT FLANGER 6X40	2
48	E0248	METAL PIPE	1
49	E0249	METAL PLATE	1
50	E0250	BOLT M4X8	4
51	E0251	VALVE ROCKER ASSY.	2



E-03 Cylinder-Crankcase-Piston

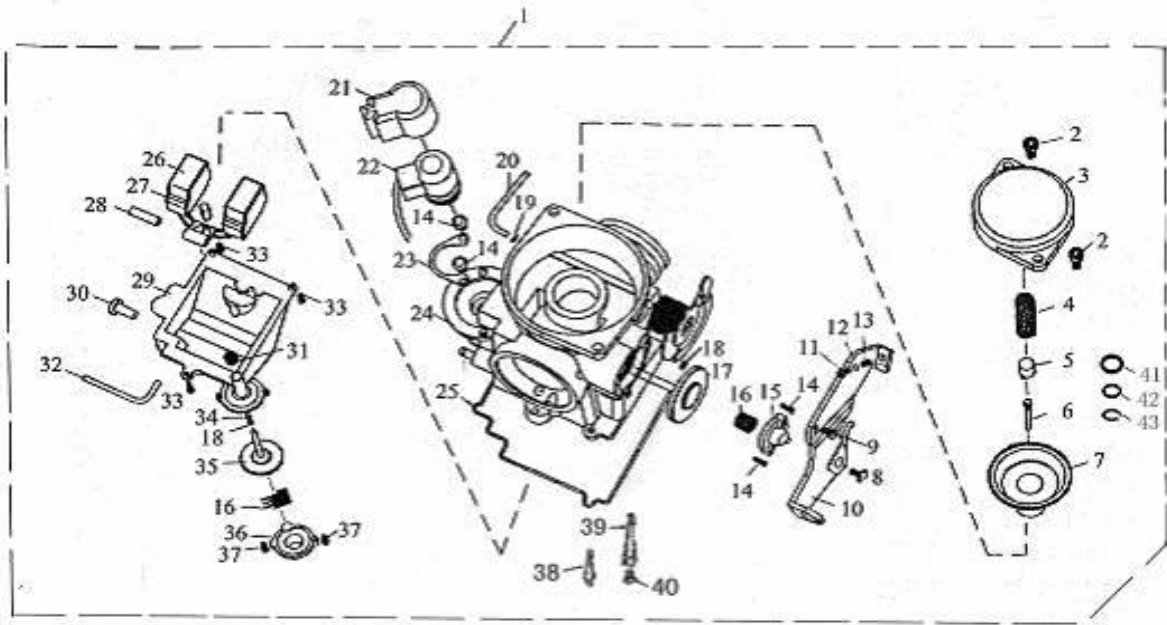
REF.NO.	PART NO.	DESCRIPTION	Q.T.Y
1	E0301	CHAIN CAM	1
2	E0302	TENSIONER CAM CHAIN	1
3	E0303	GUIDE COMP CAM CHAIN	1
4	E0304	PIVOT CAM CHAIN TENSIONER	1
5	E0305	O-RING 15.5-1.5	1
6	E0306	CYLINDER COMP	1
7	E0307	GASKET CYLINDER	1
8	E0308	PIN DOWEL SPECIAL 8X14	2
9	E0309	PISTON	1
10	E0310	PIN PISTON	1
11	E0311	PISTON PIN CLIF	2
12	E0312	RING SET PISTON	1
13	E0313	CRANK SHAFT COMP	1
14	E0314	KEY WOODRUFF	1
15	E0315	ADJUSTER CAM CHAIN	1
16	E0316	GASKET CAM CHAIN	1
17	E0317	BOLT FLANGE 6X18	2
18	E0318	WASHER SEALING 8X16X1.6	1
19	E0319	PLUG ADJUSTER	1
20	E0320	SPRING CAM CHAIN ADJUSTER	1





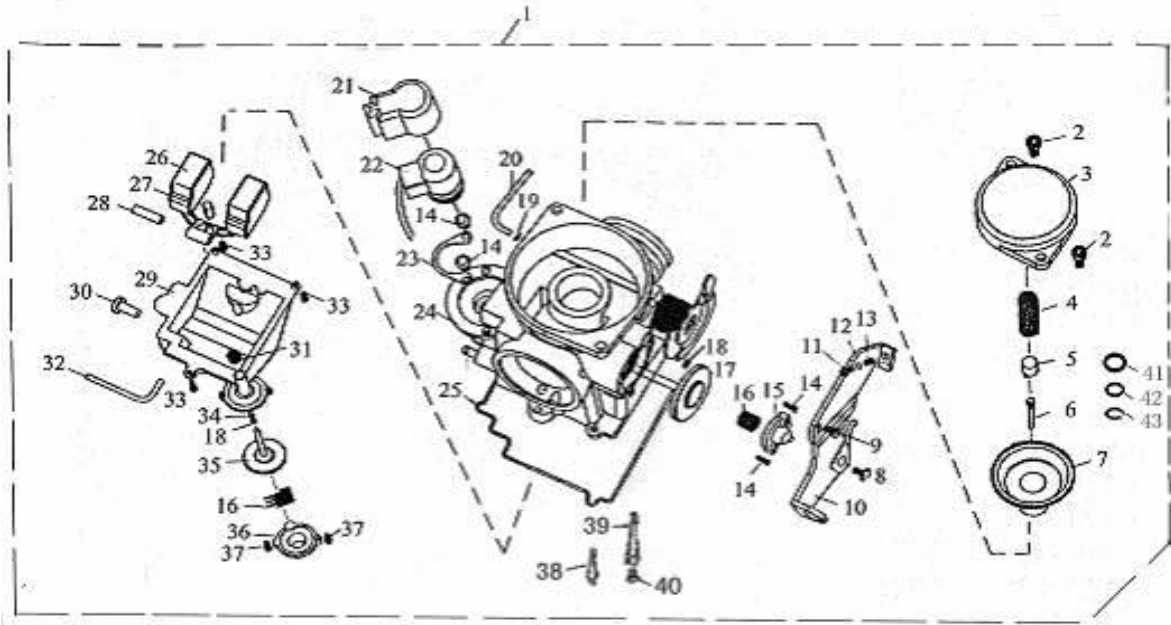
E-04 Right Crankcase Cover

REF.NO.	PART NO.	DESCRIPTION	Q.T.Y
1	E0401	COVER R CRANK CASE	1
2	E0402	OIL SEAL 16.4X30X5	1
3	E0403	GASTER R COVER	1
4	E0404	GAUGE OIL LEVEL ASSY	1
5	E0405	GAUGE OIL LEVEL	1
6	E0406	O-RING 18X3	1
7	E0407	SCREEN OIL FILTER	1
8	E0408	SPG OIL FILTER SCREEN	1
9	E0409	O-RING 30.8M/M	1
10	E0410	HOLE CAP TAPPET ADJUSTING	1
11	E0411	BOLT FLANGE SH M6X100	4
12	E0412	BOLT FLANGE M6X85	4
13	E0413	DOWEL PIN 8X14	2



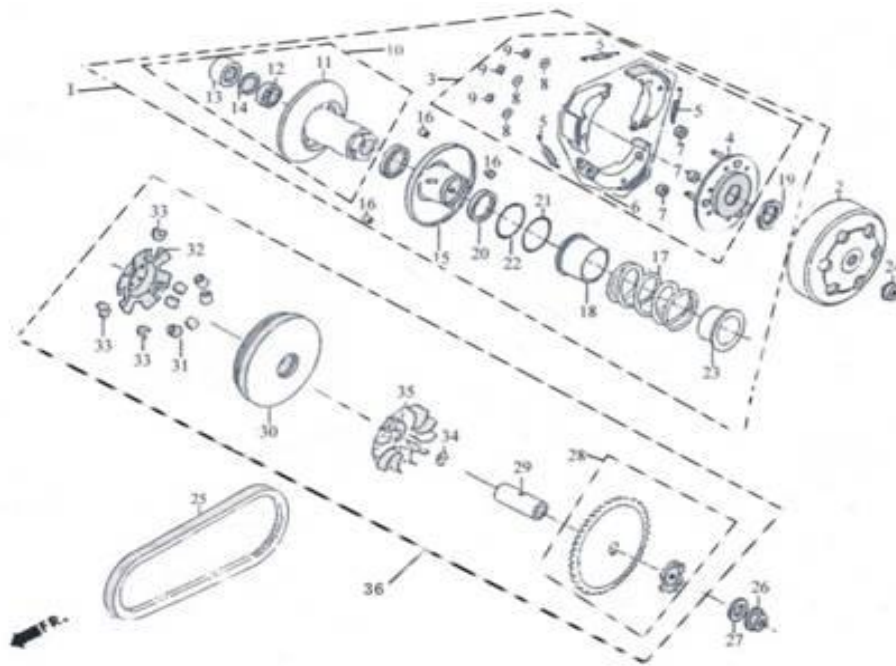
E-05 Carburetor

REF.NO.	PART NO.	DESCRIPTION	Q.T.Y
1	E0501	CARBURETOR	1
2	E0502	SCREW SPRING PLATE	2
3	E0503	SPRING PLATE	1
4	E0504	PLATE SPRING	1
5	E0505	SPRING SOCKET	1
6	E0506	JET CARBURETOR	1
7	E0507	PISTON COMP.VACUUM	1
8	E0508	CONTROL LEVER	1
9	E0509	SCREW M5X8	1
10	E0510	SCREW M5X14	1
11	E0511	SCREW M4X17	1
12	E0512	WASHER	1
13	E0513	SPRING	1
14	E0514	SCREW M4X8	4
15	E0515	ACV VALVE COVER	1
16	E0516	SPRING ACV VALVE	1
17	E0517	ACV VALVE	1
18	E0518	SEALING	2
19	E0519	CLIP,TUBE	1
20	E0520	BREATHER TUBE	1
21	E0521	CAP, STERTER VALVE	1
22	E0522	VALUESSET, STARTER ASSY.	1



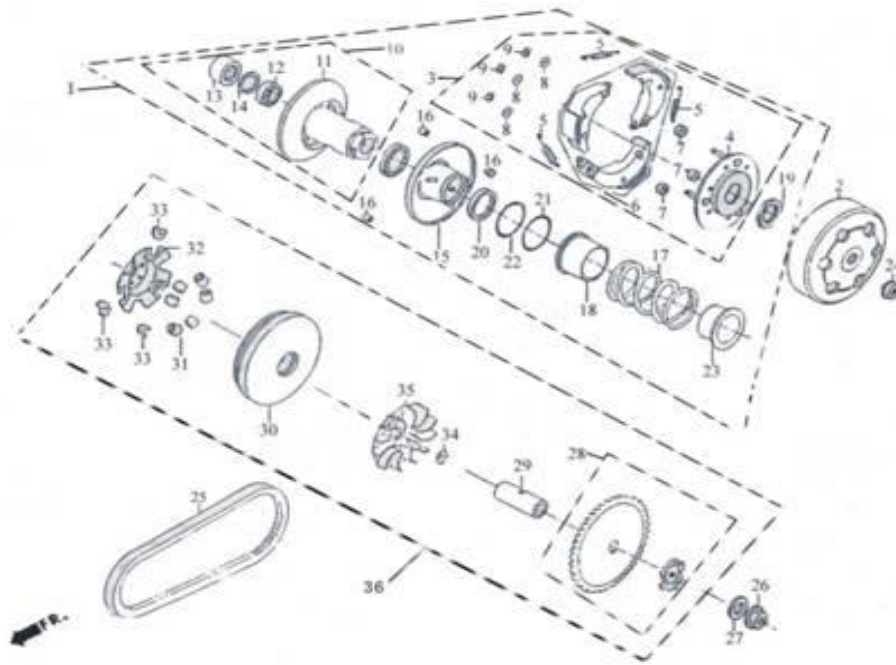
E-5 Carburetor

REF.NO.	PART NO.	DESCRIPTION	Q.T.Y
23	E0523	STARTER SOCKET	1
24	E0524	CARBURETOR BODY	1
25	E0525	SEAL, FLOAT CHAMBER	1
26	E0526	FLOAT	1
27	E0527	FLOAT VALVE ASSY.	1
28	E0528	PIN. FLAOT VALVE	1
29	E0529	CAP CARBURETOR	1
30	E0530	SCREW, FUEL LEAKAGE	1
31	E0531	DUST SEAL CAP	1
32	E0532	OVER FLOW TUBE	1
33	E0533	SCREW M4X12	3
34	E0534	SEALING RING	1
35	E0535	PLUG PUMP ASSY	1
36	E0536	PUMP DOWN COVER	1
37	E0537	SCREW M4X10	2
38	E0538	JET IDLE RUNNING	1
39	E0539	MAIN JET	1
40	E0540	MAIN JET COLUMN	1
41	E0541	WASHER	1
42	E0542	O RING	1
43	E0543	CLIP	1



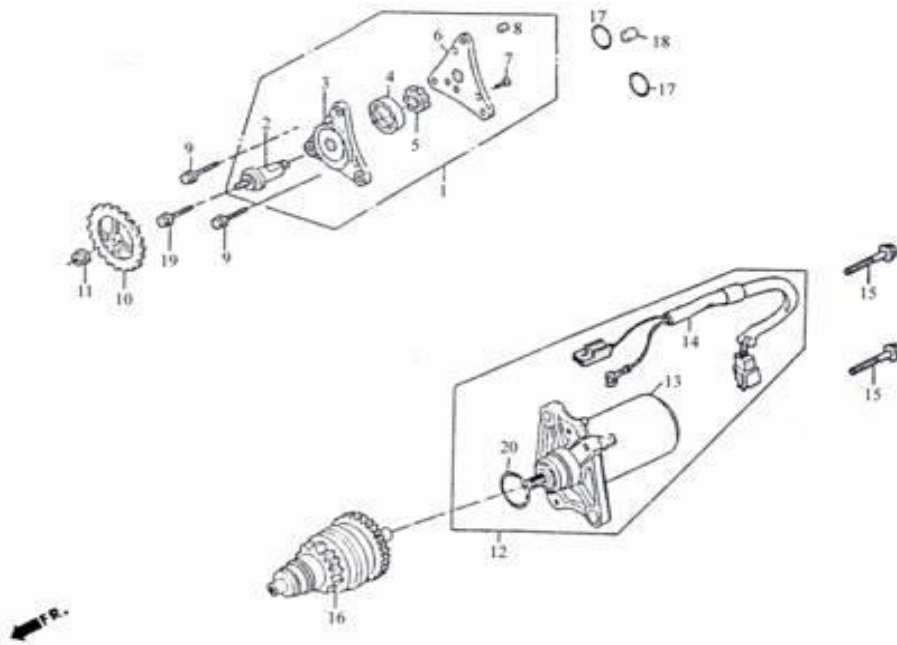
E-06 Driven Pulley

REF.NO.	PART NO.	DESCRIPTION	Q.T.Y
1	E0601	PLATE SUB ASSY DRIVE	1
2	E0602	CLUTCH OUTER	1
3	E0603	PLATE ASSY DRIVE	1
4	E0604	PLATE COMP DRIVE	1
5	E0605	SPRING CLUTCH	3
6	E0606	WEIGHT SET CLUTCH	1
7	E0607	RUBBER CLUTCH DUMPER	3
8	E0608	6M/M THRUST WASHER	3
9	E0609	CIRCLIP 6MM	3
10	E0610	FACE ASSY DRIVEN	1
11	E0611	FACE COMP DRIVEN H1	1
12	E0612	BRG RADIAL BALL 6901U	1
13	E0613	BRG NEEDLE 17X25X18WS	1
14	E0614	CIRCLIP IN 24	1
15	E0615	FACE COMP MOVABLE DRIVEN	1
16	E0616	PIN GUIDE	3
17	E0617	SPG DRIVEN FACE	1
18	E0618	COLLAR SEAL	1
19	E0619	NUT SPECIAL 28MM	1
20	E0620	OIL SEAL 34X39X3	2
21	E0621	O-RING 36X1.5	1
22	E0622	O-RING 39.2X2.2	1
23	E0623	COLLAR SPG	1
24	E0624	NUT FLANGE 10MM	1
25	E0625	BELT DRIVE	1



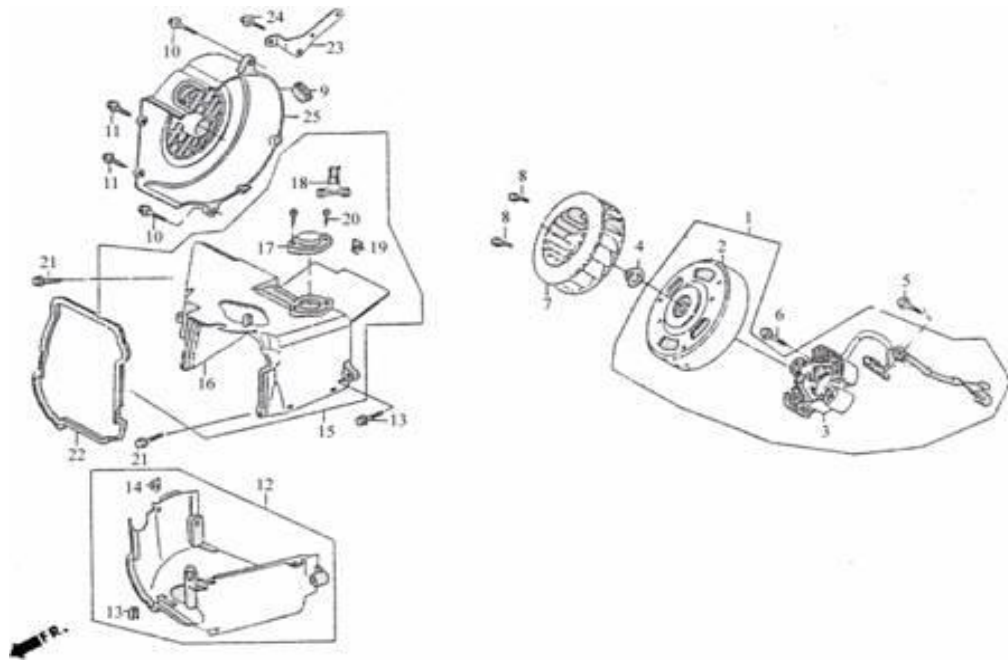
E-06 Driven Pulley

REF.NO.	PART NO.	DESCRIPTION	Q.T.Y
26	E0626	NUT HEX 12MM	1
27	E0627	WASHER SPECIAL 12MM	1
28	E0628	FACE DRIVE	1
29	E0629	BOSS DRIVE FACE	1
30	E0630	FACE COMP MOVABLE DRIVE	1
31	E0631	ROLLER COMP WEIGHT 6.5gr	6
32	E0632	PLATE RAMP	1
33	E0633	PIECE SLIDE	3
34	E0634	RATCHET KICK STARTER	1
35	E0635	FAN CVT COOLING	1
36	E0636	DRIVER ASSY.	1



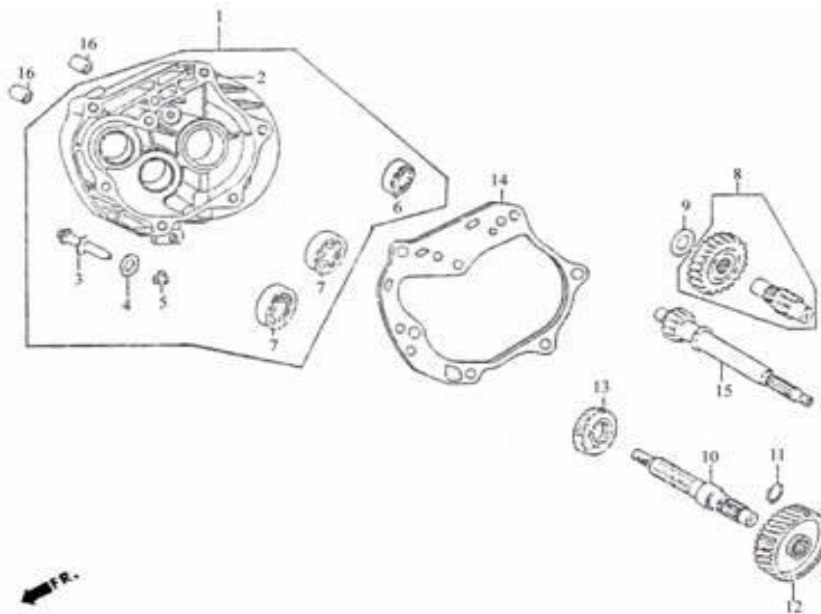
E-07 Starting Motor-Oil Pump

REF.NO.	PART NO.	DESCRIPTION	Q.T.Y
1	E0701	PUMP ASSY OIL	1
2	E0702	SHAFT OIL PUMP	1
3	E0703	BODY OIL PUMP	1
4	E0704	ROTOR OIL PUMP OUTER	1
5	E0705	ROTER OIL PUMP INNER	1
6	E0706	PLATE OIL PUMP	1
7	E0707	SCREW 4X10	3
8	E0708	DOWEL PIN 4X6.5	1
9	E0709	BOLT FLANGE SH 6X20	2
10	E0710	GEAR OIL PUMP DRIVEN	1
11	E0711	NUT FLANGE 6MM	1
12	E0712	MOTOR ASSY START	1
13	E0713	MOTOR UNIT START	1
14	E0714	SUB HARNESS	1
15	E0715	BOLT FLANGE SH 6X25	2
16	E0716	PINION ASSY STARTER	1
17	E0717	O-RING 9X1.6	2
18	E0718	PIN DOWELL 8X10	1
19	E0719	BOLT FLANGE SH 6X25	1
20	E0720	O-RING	1



E-08 Fan Cover Generator

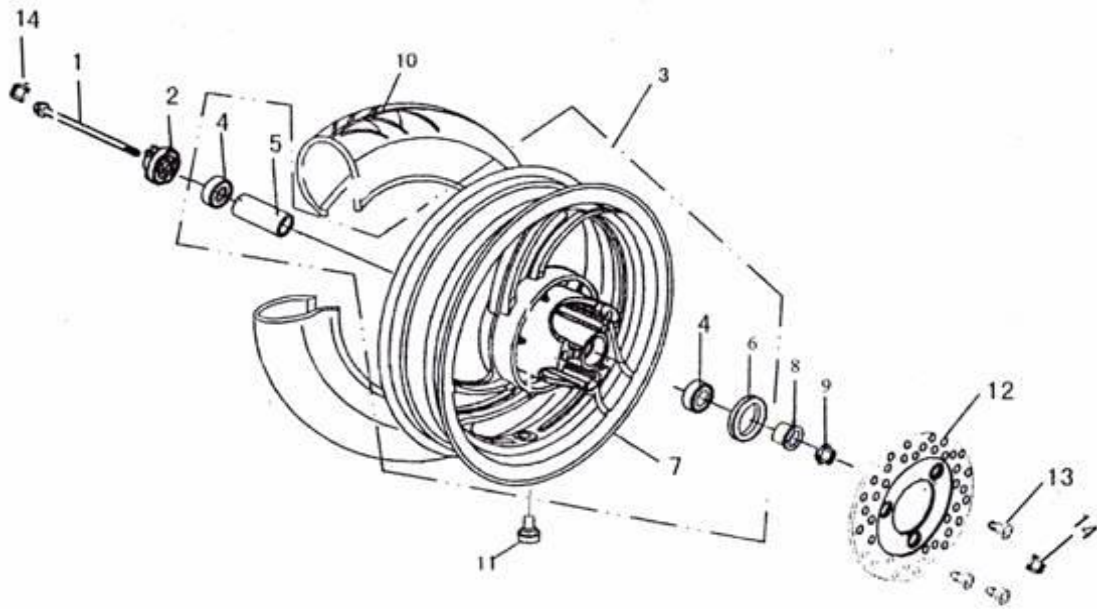
REF.NO.	PART NO.	DESCRIPTION	Q.T.Y
1	E0801	AC GEN ASSY	1
2	E0802	FLYWHEEL COMP	1
3	E0803	STATOR COMP	1
4	E0804	NUT FLANGE 10MM	1
5	E0805	BOLT HEX 5X12	2
6	E0806	BOLT FLANGE SH 6X22	2
7	E0807	FAN COMP COOLING	1
8	E0808	BOLT FLANGE SH 6X18	4
9	E0809	GROM B SIDE PNL	1
10	E0810	BOLT FLANGE SH 6X25	3
11	E0811	SCREW TAPPING 5X16	2
12	E0812	SHROUD ASSY A	1
13	E0813	SHROUD COMP A	1
14	E0814	NUT CLIP 6MM	2
15	E0815	SHROUD ASSY B	1
16	E0816	SHROUD COMP B	1
17	E0817	BOX TENSIONER LIFTER	1
18	E0818	CLIP VACUUM TUBE	1
19	E0819	NUT CLIP 6MM	1
20	E0820	SCREW TAPPING 4X12	2
21	E0821	BOLT FLANG SH 6X16	2
22	E0822	SEAL SHROUD	1
23	E0823	STAY FENDER	1
24	E0824	BILT FLANGE SH 6X12	1
25	E0825	COVER ASSY FAN	1



E-09 Transmission

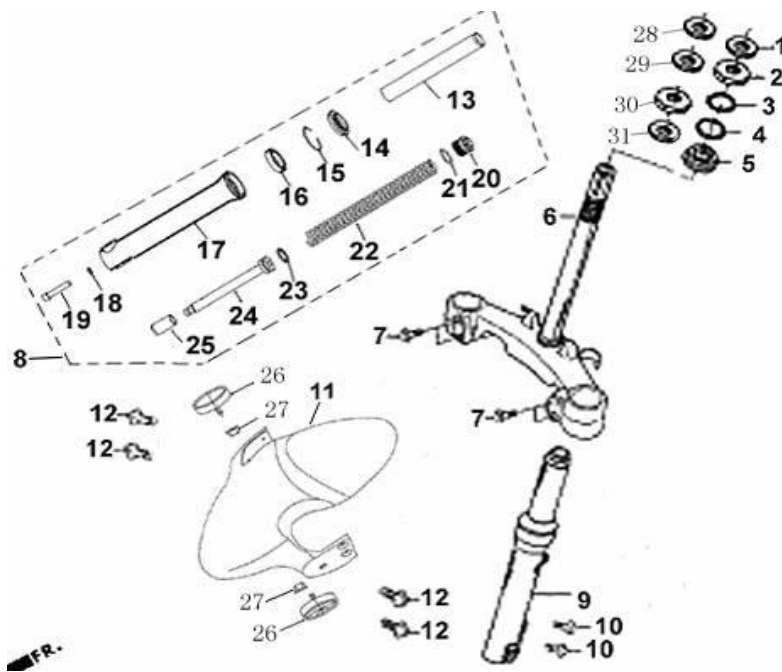
REF.NO.	PART NO.	DESCRIPTION	Q.T.Y
1	E0901	CASE SET MISSION	1
2	E0902	MISSION CASE BODY	1
3	E0903	PIN BRAKE SHOE ANCHOR	1
4	E0904	O RING 7.5X1.5	1
5	E0905	NUT FLANGE M8	1
6	E0906	BRG BALL RAKIAL 6004UU	1
7	E0907	BRG BALL RADIAL 6201	2
8	E0908	SHAFT COMP COUNTER	1
9	E0909	WASHER SIDE 12MM	1
10	E0910	SHAFT FINAL	1
11	E0911	CIRCLIP EX 20	1
12	E0912	GEAR FINAL	1
13	E0913	OIL SEAL 27X42X7	1
14	E0914	GASKET MISSION CASE	1
15	E0915	SHAFT DRIVE	1
16	E0916	DOWEL PIN 10X20	2





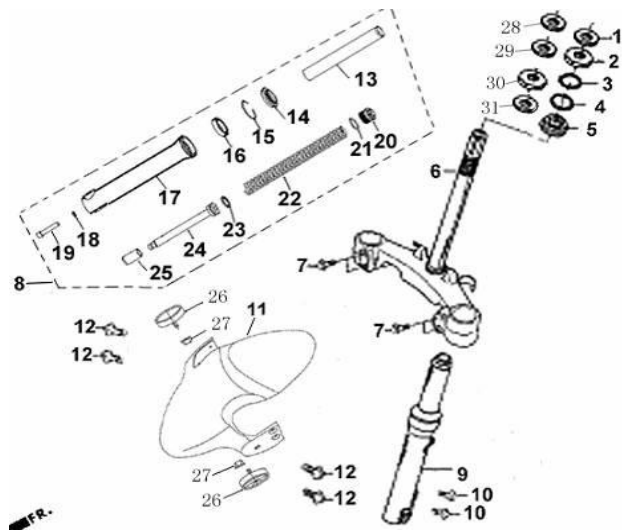
F-01 FRONT WHEEL&前轮总成

REF.NO.	PART NO.	DESCRIPTION	Q.T.Y
1	F0101	FRONT AXLE	1
2	F0102	COUNTER	10
3	F0103	ASSY, FRONT RIM	1
4	F0104	BEARING 6201	2
5	F0105	MIDDLE BUSHING,	1
6	F0106	OIL SEAL	1
7	F0107	FRONT RIM	4
8	F0108	BUSHING	1
9	F0109	NUT M12	1
10	F0110	TIRE 90/90-12	30
11	F0111	CAP	1
12	F0112	DISK BRAKE PLATE	1
13	F0113	BOLT	3
14	F0114	RUBBER φ14	2



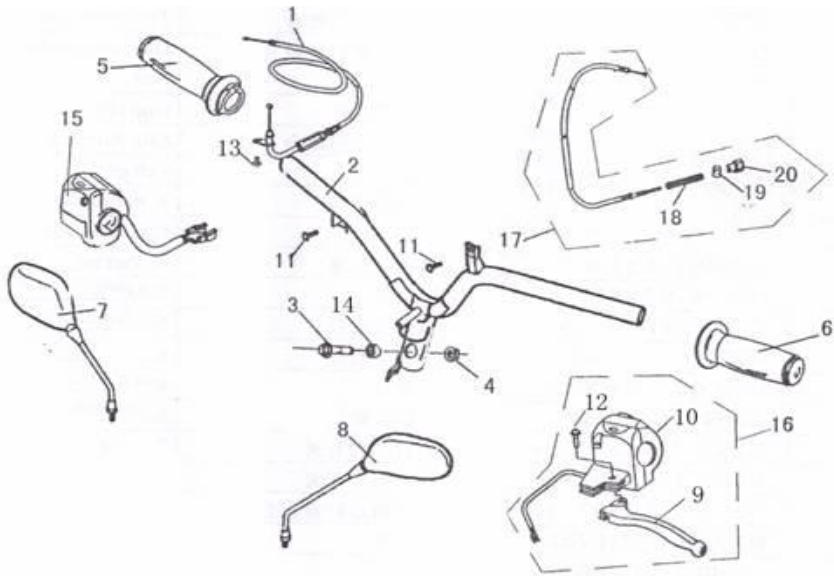
F-02 FRONT FORK & 前悬挂总成

REF.NO.	PART NO.	DESCRIPTION	Q.T.Y
1	F0201	LOCKNUT	1
2	F0202	BEARER, UPPER	1
3	F0203	STEEL BALL, UPPER	1
4	F0204	STEEL BALL, LOWER	1
5	F0205	BEARER, STEERING POLE	1
6	F0206	STEERING POLE	3
7	F0207	BOLT M8X40	1
8	F0208	SHOCK ABSORBER, FR RH.	1
9	F0209	SHOCK ABSORBER, FR LH.	1
10	F0210	BOLT M8X32	1
11	F0211	FR. FENDER	1
12	F0212	BOLT M6X14	1
13	F0213	INNER TUBE, FR SHOCK ABSORBER	1
14	F0214	SEAL, FR SHOCK ABSORBER	1
15	F0215	CIRCLIP , FR SHOCK ABSORBER	1
16	F0216	OIL SEAL, FR. SHOCK ABSORBER	1
17	F0217	TUBE, FR. SHOCK ABSORBER	1



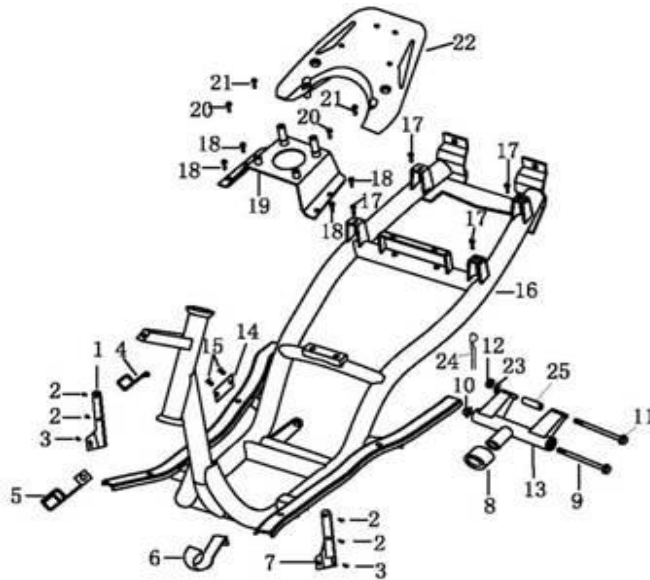
F-02 FRONT FORK & FRONT SWING PARTS

REF.NO.	PART NO.	DESCRIPTION	Q.T.Y
18	F0218	WASHER	1
19	F0219	BOLT	1
20	F0220	SPECIAL NUT	1
21	F0221	O-RING	1
22	F0222	MAIN SPRING	1
23	F0223	RING, PISTON	1
24	F0224	PLUG	1
25	F0225	JOINT, OIL STOP	1
26	F0226	REFLECTOR	2
27	F0227	FLANGE NUT M6	2
28	F0228	LOCKNUT, LOWER	1
29	F0229	UPPER BEARER, FRAME	1
30	F0230	COVER, DIRT PROOF	1
31	F0231	LOWER BEARER, FRAME	1



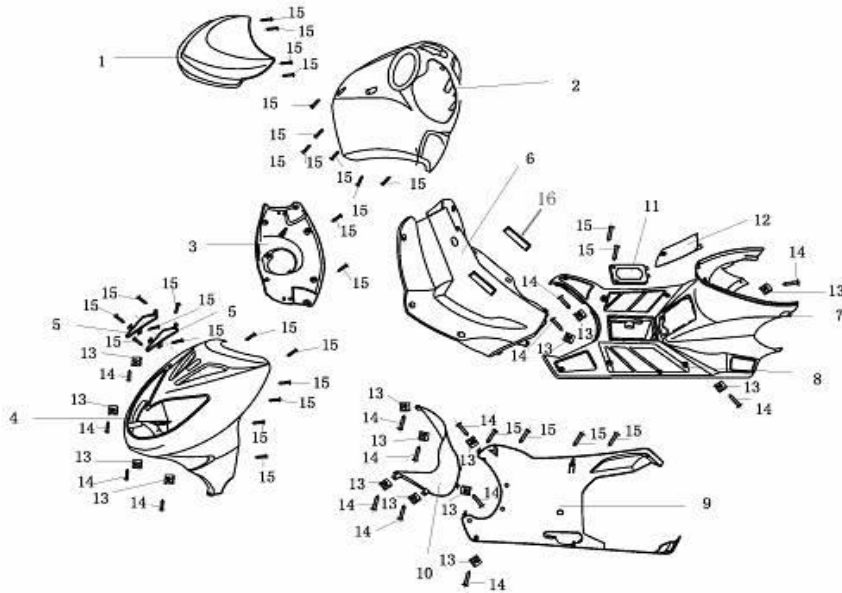
F-03 OPERATING SYSTEM&操纵总成

REF.NO.	PART NO.	DESCRIPTION	Q.T.Y
1	F0301	CABLE ASSY, THROTTLE	1
2	F0302	WELDING PARTS, HANDLE	2
3	F0303	BOLT M6X20	1
4	F0304	BOLT MM10×1.25×45	1
5	F0305	ASSY, THROTTLE BAR	1
6	F0306	HANDLEBAR LH	1
7	F0307	MIRROR, RT	1
8	F0308	MIRROR , LH	1
9	F0309	BRAKE GRIP, LH	1
10	F0310	SWITCH, LH	1
11	F0311	NUT M10X1.25	1
12	F0312	FASTEN SCREW, HANDLEBAR	1
13	F0313	SCREW M5X8	1
14	F0314	BUSHING	1
15	F0315	SWITCH ASSY, RT.	1
16	F0316	SWITCH ASSY, LH	1
17	F0317	BRAKE CABLE ASSY, RR	1
18	F0318	SPRING	1
19	F0319	JOINT	1
20	F0320	ADJUSTED CAP	1



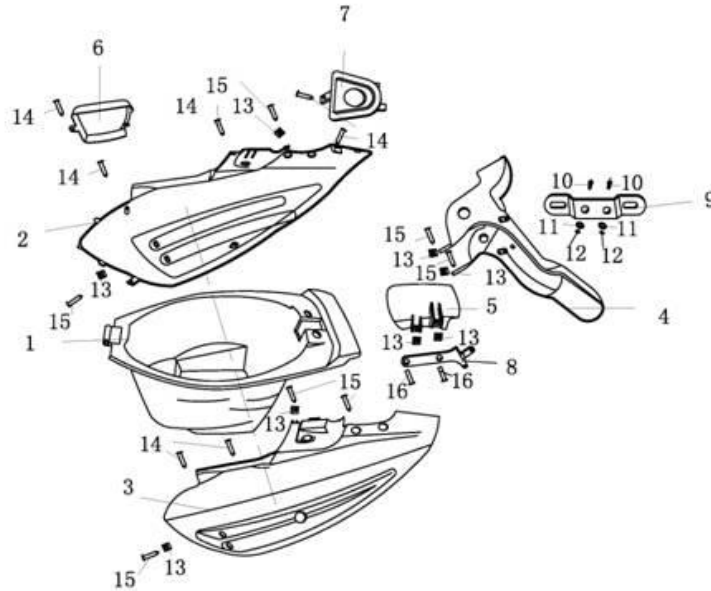
F-04 FRAME BODY & 车架总成

REF.NO.	PART NO.	DESCRIPTION	Q.T.Y
1	F0401	RIGHT RACK, FR. FRONT	1
2	F0402	BOLT M6X25	4
3	F0403	BOLT M6X20	2
4	F0404	CABLE 1	1
5	F0405	CABLE 2	1
6	F0406	CABLE 3	1
7	F0407	LEFT RACK, FR. FENDER	1
8	F0408	AMORTIZE, SWINGER	1
9	F0409	MOUNT AXLE, SWING BRACKET	1
10	F0410	LOCKNUT M10X1.25	1
11	F0411	AXLE, SWING BRACKET	1
12	F0412	UNCORK NUT	1
13	F0413	ENGINE , SWING BRACKET	4
14	F0414	STATUTORY LABEL	1
15	F0415	SCREW	2
16	F0416	WELDING PARTS, FRAME	1
17	F0417	BOLT M6X25	4
18	F0418	BOLT M6X20	4
19	F0419	CAP, FUEL TANK	1
20	F0420	BOLT M8X50	2
21	F0421	BOLT M8X25	2
22	F0422	REAR LUGGAGE BRACKET HONDA RED	1
	F0422	REAR LUGGAGE BRACKET SUZUKI BLUE	1
	F0422	REAR LUGGAGE BRACKET SUZUKI RED	1
23	F0423	WASHER 12	1
24	F0424	UNCORK PIN	1
25	F0425	AXLE BUSHING, SWING BRACKET	1



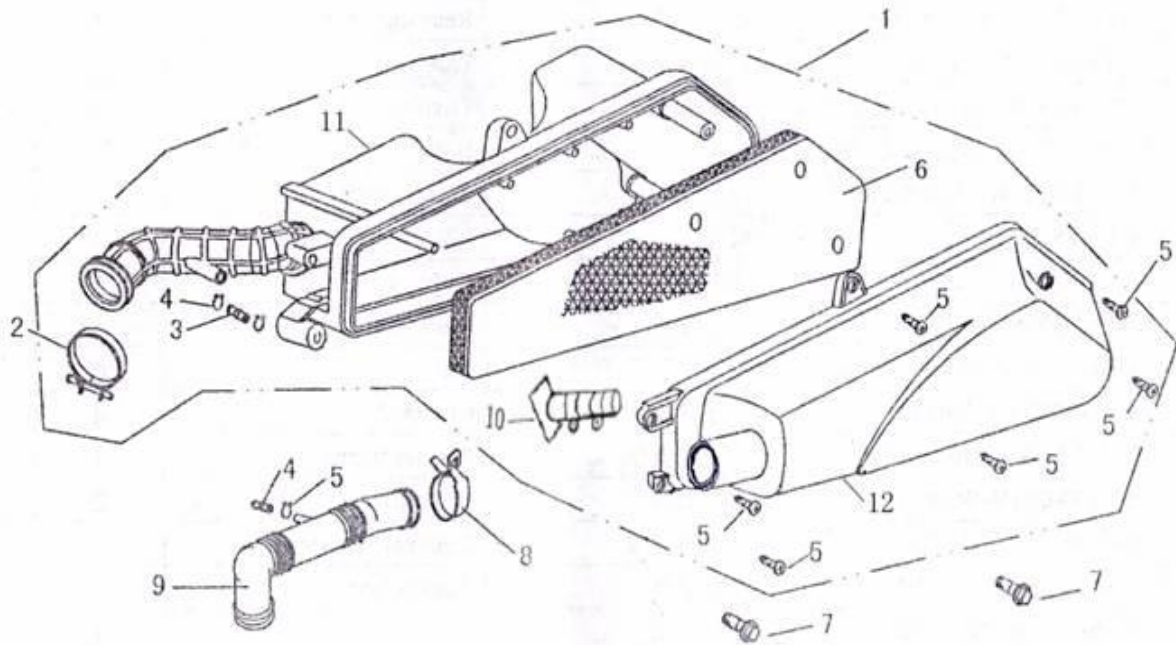
F-05 FRONT COVER BODY&前车体件

REF.NO.	PART NO.	DESCRIPTION	Q.T.Y
1	F0501	WINGPROOF GLASS	10
2	F0502	OUTER COVER, METER HONDA RED	2
	F0502	OUTER COVER, METER SUZUKI RED	2
	F0502	OUTER COVER, METER SUZUKI BLUE	2
3	F0503	LOWER PART, HEAD COVER	3
4	F0504	FACE PLATE	1
5	F0505	PLATE, FR. PROTECTION	2
6	F0506	MID-PROTECTION COVER	3
7	F0507	FRONT COVER, GLOVE BOX	2
8	F0508	FOOT PEDAL	3
9	F0509	LOWER COVER HONDA RED	2
	F0509	LOWER COVER SUZUKI RED	2
	F0509	LOWER COVER SUZUKI BLUE	2
10	F0510	FENDER FR.	4
11	F0511	LID, BATTERY CASE	1
12	F0512	OIL VIEW PLATE	1
13	F0513	WASHER	16
14	F0514	ST4.8X13	16
15	F0515	ST3.9X13	30
16	F0516	COVER ,VIN	5



F-06 Body Cover:GLOVE Box&车体件

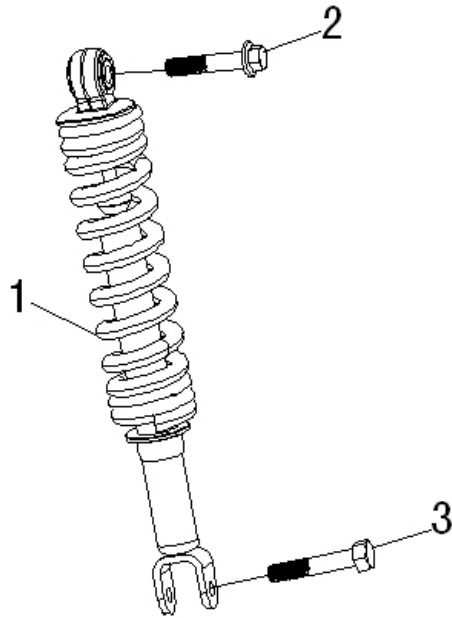
REF.NO.	PART NO.	DESCRIPTION	Q.T.Y
1	F0601	GLOVE BOX	1
2	F0602	SIDE PROTECTION PLATE , RH	1
3	F0603	SIDE PROTECTION PLATE , LH	1
4	F0604	FENDER , RR	3
5	F0605	FENDER, SMALL	1
6	F0606	INNER COVER,GLOVE BOX	1
7	F0607	COVER, OIL TANK	1
8	F0608	BRACKET,SMALL FENDER	1
9	F0609	BRACKET, LICENSE RR	1
10	F0610	BOLT M6X30	2
11	F0611	PLAIN WASHER	2
12	F0612	NUT M6	2
13	F0613	WASHER	8
14	F0614	SCREW ST3.9X13	5
15	F0615	SCREW ST 4.8X13	6
16	F0616	ST4.8X20	2



F-07 AIR CLAENER&空濾器

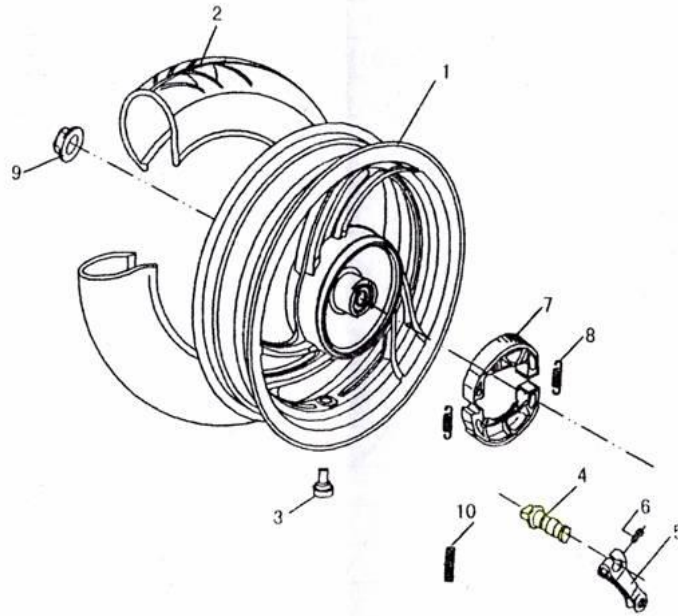
REF.NO.	PART NO.	DESCRIPTION	Q.T.Y
1	F0701	ASSY, FILTER	3
2	F0702	HOOP	2
3	F0703	JOINT, AIR SUPPLY	2
4	F0704	RING	3
5	F0705	ST4.2X19	8
6	F0706	CORE, AIR FILTER	1
7	F0707	BOLT M6X30	2
8	F0708	TUBE CLAMP	1
9	F0709	INLET TUBE	1
10	F0710	VENTILATION TUBE	1
11	F0711	SHELL, AIR FILTER	1
12	F0712	CAP, AIR FILTER	1





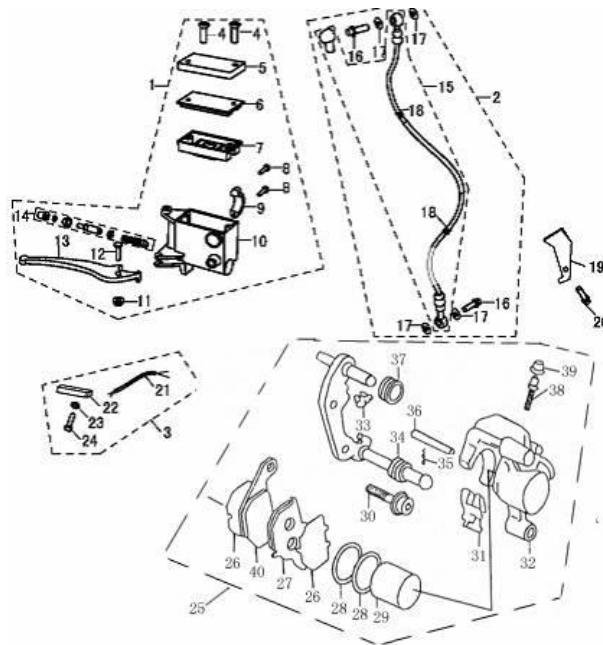
F-08 REAR SHOACK ABSORBER&后悬挂总成

REF.NO.	PART NO.	DESCRIPTION	Q.T.Y
1	F0801	REAR SHOCK ABSORBER ASSY	1
2	F0802	BOLT M10X32	1
3	F0803	BOLT M10X32	1



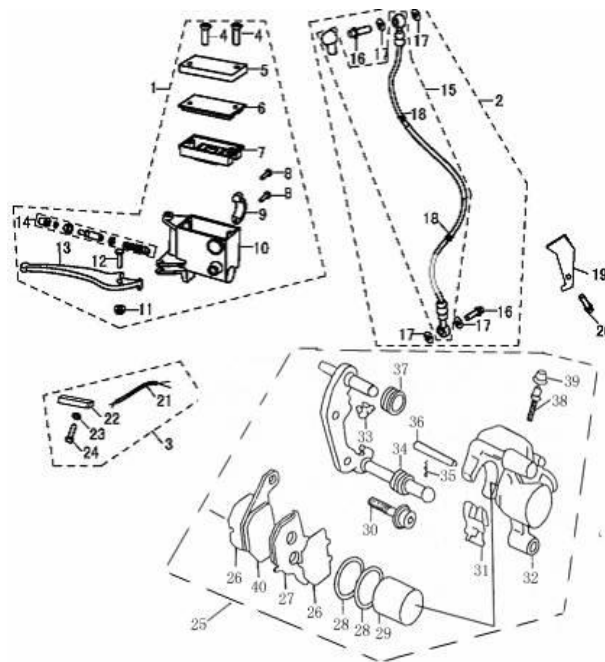
F-09 REAR WHEEL & 后轮总成

REF.NO.	PART NO.	DESCRIPTION	Q.T.Y
1	F0901	REAR RIM	3
2	F0902	TIRE	1
3	F0903	CAP	1
4	F0904	CAM SHAFT, BRAKE RR	1
5	F0905	SWING ARM, BRAKE RR	1
6	F0906	BOLT M6X20	1
7	F0907	BRAKE PAD ,RR	1
8	F0908	PULLED SPRING	2
9	F0909	NUT M16X1.5	1
10	F0910	RETURN SPRING	1



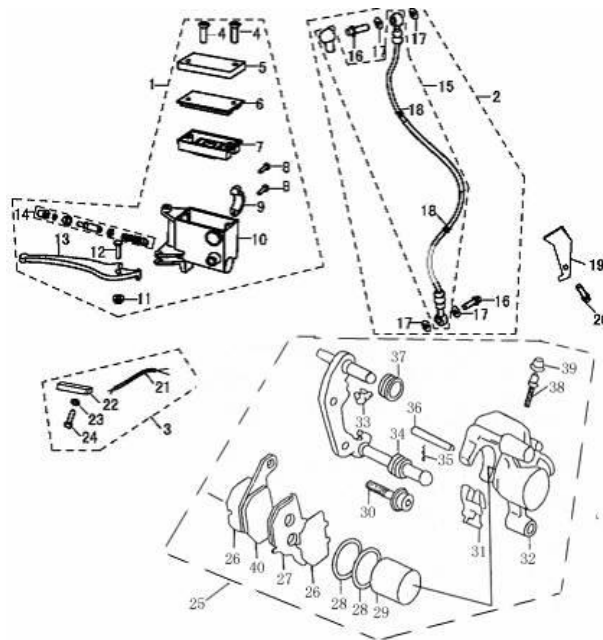
F-10 FRONT BRAKE SYSTEM&前刹总成

REF.NO.	PART NO.	DESCRIPTION	Q.T.Y
1	F1001	MAIN BRAKE PUMP ASSY, FR	1
2	F1002	BRAKE TUBE ASSY, FR	1
3	F1003	SWITCH ASSY, BRAKE	1
4	F1004	SCREW M5X25	2
5	F1005	COVER, LIQUID STORAGE BOX	1
6	F1006	BRACKET, SEAL FILM	1
7	F1007	SEAL FILM	1
8	F1008	BOLT M6X22	2
9	F1009	PRESSER	1
10	F1010	BRAKE PUMP	1
11	F1011	NUT M6	1
12	F1012	BOLT M6X30	1
13	F1013	BRAKE GRIP	10
14	F1014	PISTON ASSY	1



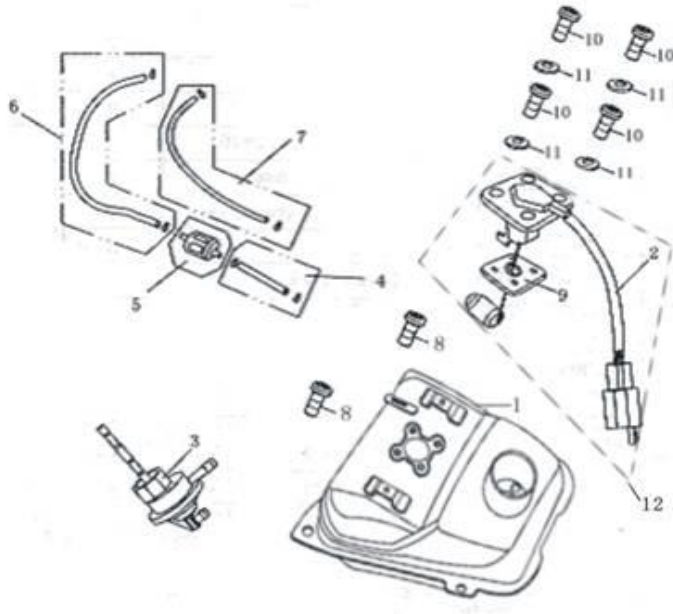
F-10 FRONT BRAKE SYSTEM&前刹总成

REF.NO.	PART NO.	DESCRIPTION	Q.T.Y
15	F1015	BRAKE TUBE, ASSY	1
16	F1016	BOLT, OIL BREATHER	2
17	F1017	WASHER	4
18	F1018	RUBBER RING	2
19	F1019	OIL TUBE CLAMP	1
20	F1020	SCREW M6X10	1
21	F1021	SWITCH CABLE, BRAKE	1
22	F1022	BRAKE SWITCH	1
23	F1023	WASHER 4	1
24	F1024	SCREW M4X12	1
25	F1025	LOWER PUMP ASSY	4
26	F1026	WASHER	2
27	F1027	BASE	20
28	F1028	OIL SEAL	2



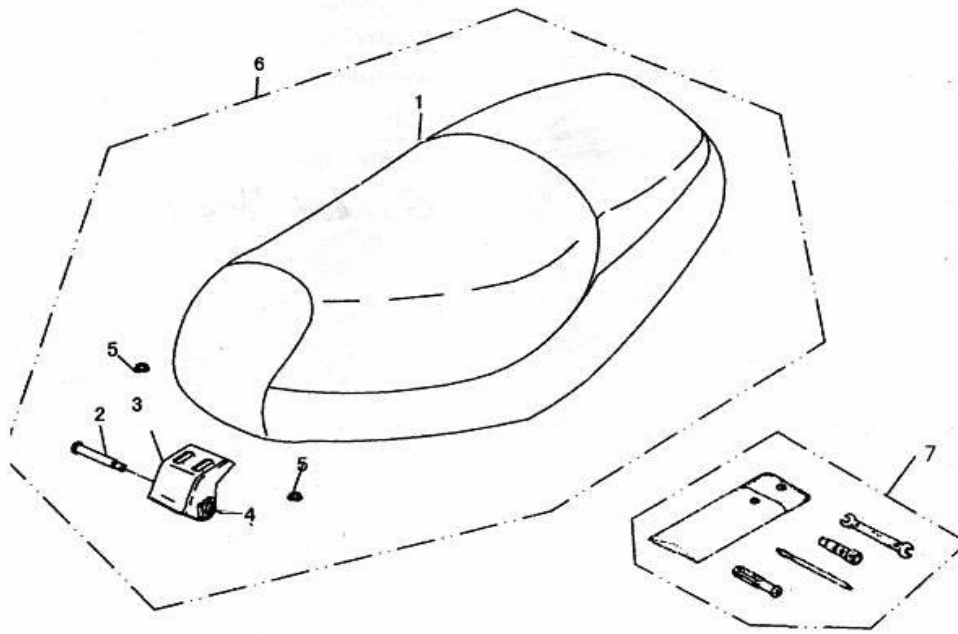
F-10 FRONT BRAKE SYSTEM&前刹总成

REF.NO.	PART NO.	DESCRIPTION	Q.T.Y
29	F1029	PISTON	1
30	F1030	SCREW, BRAKE CLAMPER	2
31	F1031	SPRING SHEET	1
32	F1032	SUB-OIL TANK	1
33	F1033	LEADING BLOCK	1
34	F1034	INSULATOR	1
35	F1035	CLAMP	1
36	F1036	PIN	1
37	F1037	PROTECT COVER	1
38	F1038	BOLT, AIR OUTLET	1
39	F1039	COVER	1



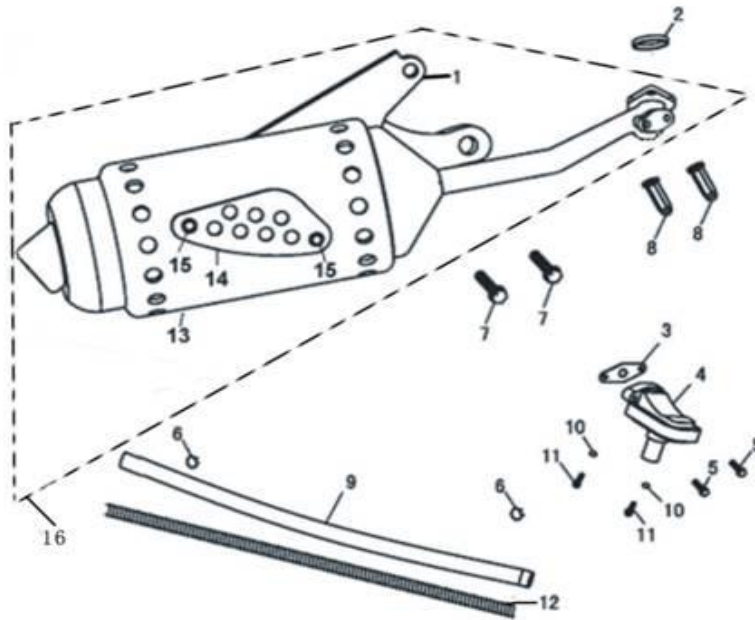
F-11 FUEL TANK & 油箱

REF.NO.	PART NO.	DESCRIPTION	Q.T.Y
1	F1101	Oil tank assy	1
2	F1102	Sensor assy	1
3	F1103	Switch assy, gas	1
4	F1104	Oil tube A	2
5	F1105	Oil Filter	2
6	F1106	Oil tube B	1
7	F1107	Tube	1
8	F1108	Bolt M6x22	3
9	F1109	Seal washer, fuel sensor	1
10	F1110	Bolt M6x12	4
11	F1111	Plain washer 5	4
12	F1112	FUEL SENSOR	20



F-12 Cushion & 坐垫总成

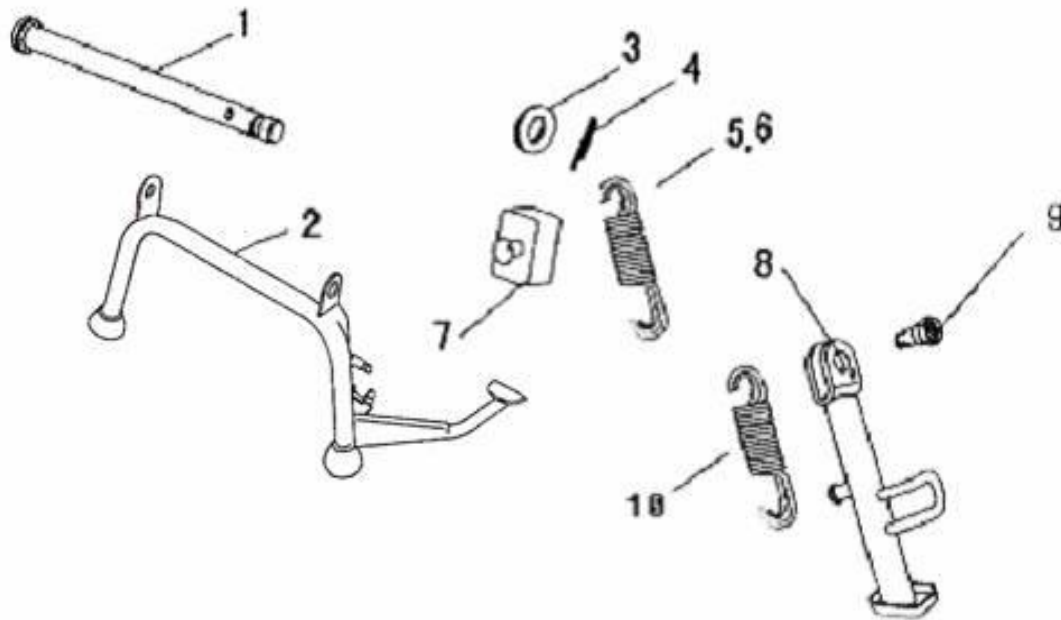
REF.NO.	PART NO.	DESCRIPTION	Q.T.Y
1	F1201	cushion	2
2	F1202	Axle	1
3	F1203	Bracket, cushion	1
4	F1204	Nut M6	1
5	F1205	Nut M6	1
6	F1206	Cushion assy	1
7	F1207	Daily tools	1



F-13 MUFFLER & 消声器总成

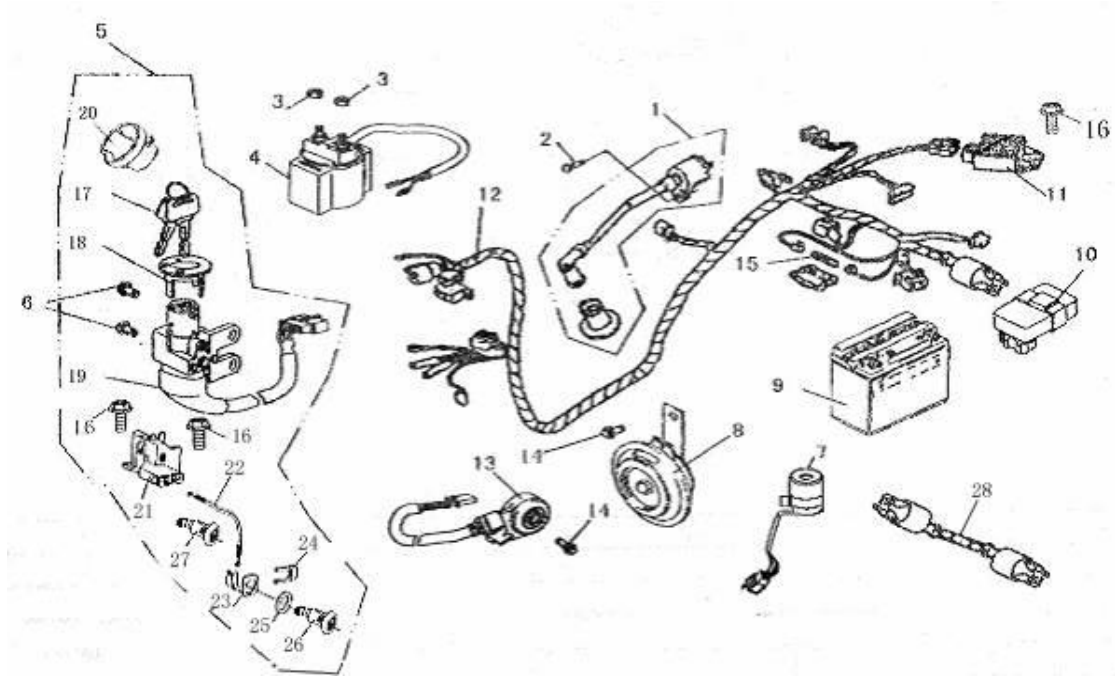
REF.NO.	PART NO.	DESCRIPTION	Q.T.Y
1	F1301	Muffler assy	1
2	F1302	Asbestine washer	1
3	F1303	Asbestine washer, 2 <sup>nd</sup> air supply vlave	1
4	F1304	2 <sup>nd</sup> air supply valve	1
5	F1305	Bolt M6x112	2
6	F1306	Clamped Ring	2
7	F1307	Bolt M8x35	2
8	F1308	Nut M6	2
9	F1309	2 <sup>nd</sup> air supply pipe	1
10	F1310	Spring washer	2
11	F1311	Bolt M6x20	2
12	F1312	Adorn spring	1
13	F1313	Inner adorn cover	1
14	F1314	Outer adorn cover	1
15	F1315	Bolt M6x12	2
16	F1316	EXHAUST ASSY.	1





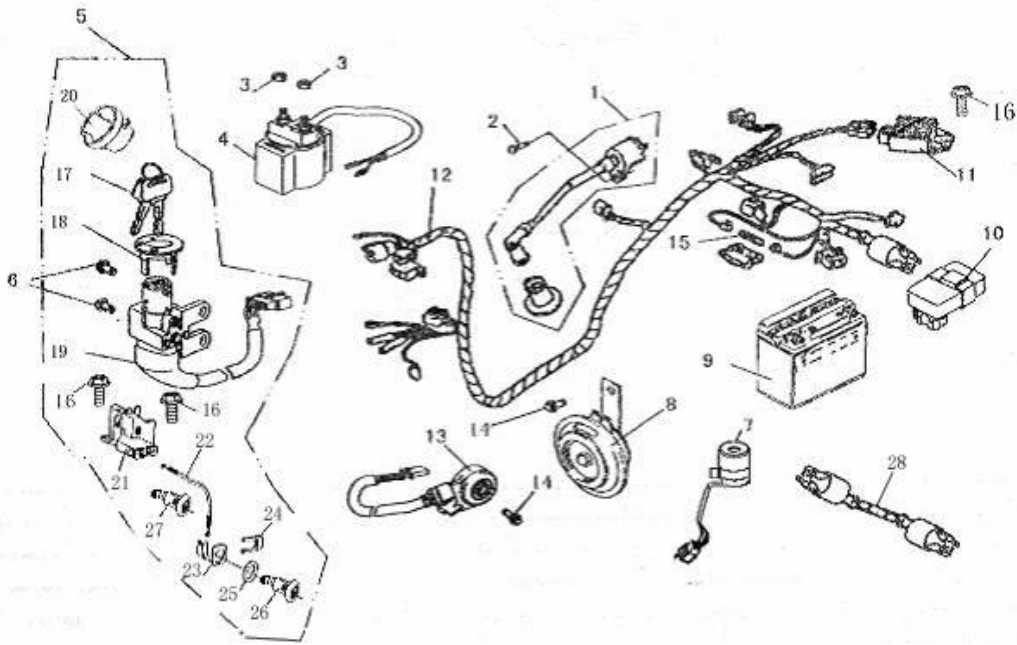
F-14 Main stand assy/Side stand assy

REF.NO.	PART NO.	DESCRIPTION	Q.T.Y
1	F1401	Install axle, main stand	1
2	F1402	Welding assy, main supporter	3
3	F1403	Plain washer 8	1
4	F1404	Uncork pin 1.5x2.4	1
5	F1405	Inner spring	1
6	F1406	Outer spring	1
7	F1407	Amortize , Main supporter	1
8	F1408	Welding assy, side stand	3
9	F1409	Bolt , side stand	1
10	F1410	Spring, side stand	1



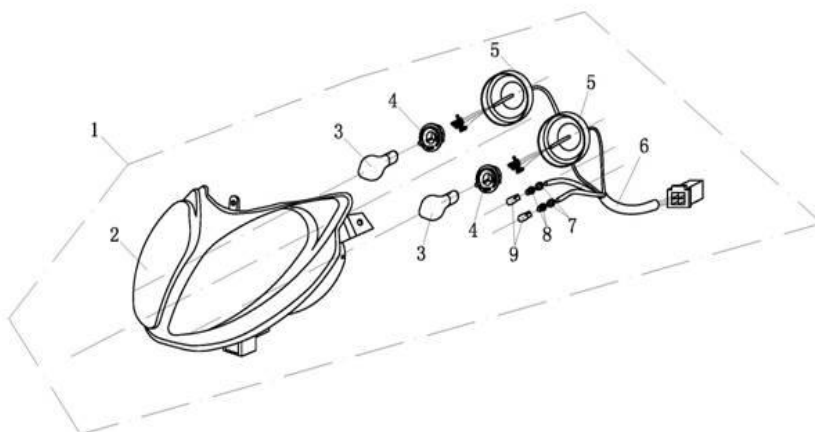
F-15 Wire harness

REF.NO.	PART NO.	DESCRIPTION	Q.T.Y
1	F1501	Ignition coil	1
2	F1502	Bolt M6x20	1
3	F1503	Nut m6	2
4	F1504	Start relay	1
5	F1505	Set lock	6
6	F1506	Bolt M6x16	2
7	F1507	Flasher	1
8	F1508	Horn	1
9	F1509	battery	1
10	F1510	CDI	1
11	F1511	Rectifier	10
12	F1512	Cable assy	1
13	F1513	Assy, flameout switch	1
14	F1514	Bolt M6x10	2
15	F1515	Fuse	1
16	F1516	Bolt M6x12	2
17	F1517	Key	2
18	F1518	Cover, ignition switch lock	1
19	F1519	Ignition switch lock	1
20	F1520	Assy, fuel tank cover	1
21	F1521	Socket, cushion lock	1
22	F1522	Cable , cushion lock	1
23	F1523	Fasten sheet, cushion lock	1



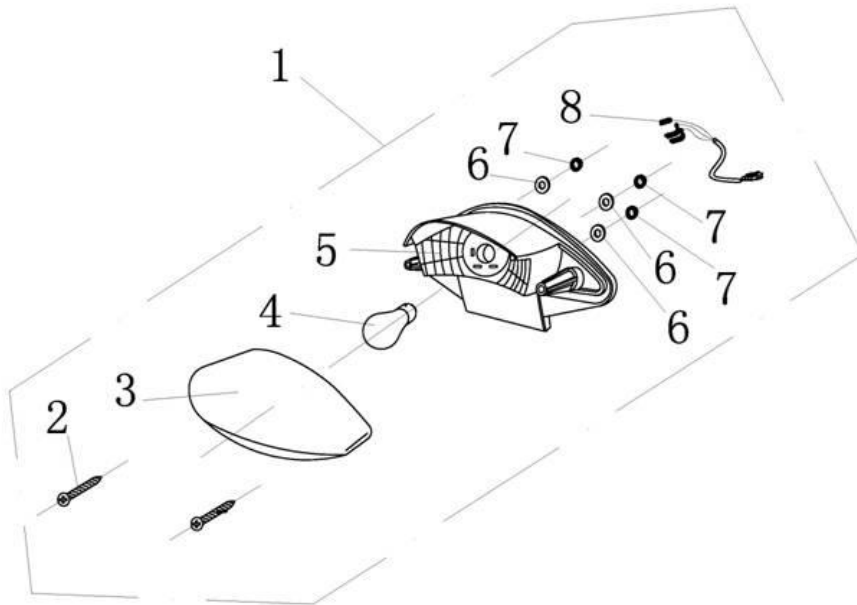
F-15 Wire harness

REF.NO.	PART NO.	DESCRIPTION	Q.T.Y
24	F1524	Lock sheet, cushion	1
25	F1525	Rubber ring	1
26	F1526	Assy, cushion lock	1
27	F1527	Lock, glove box	1



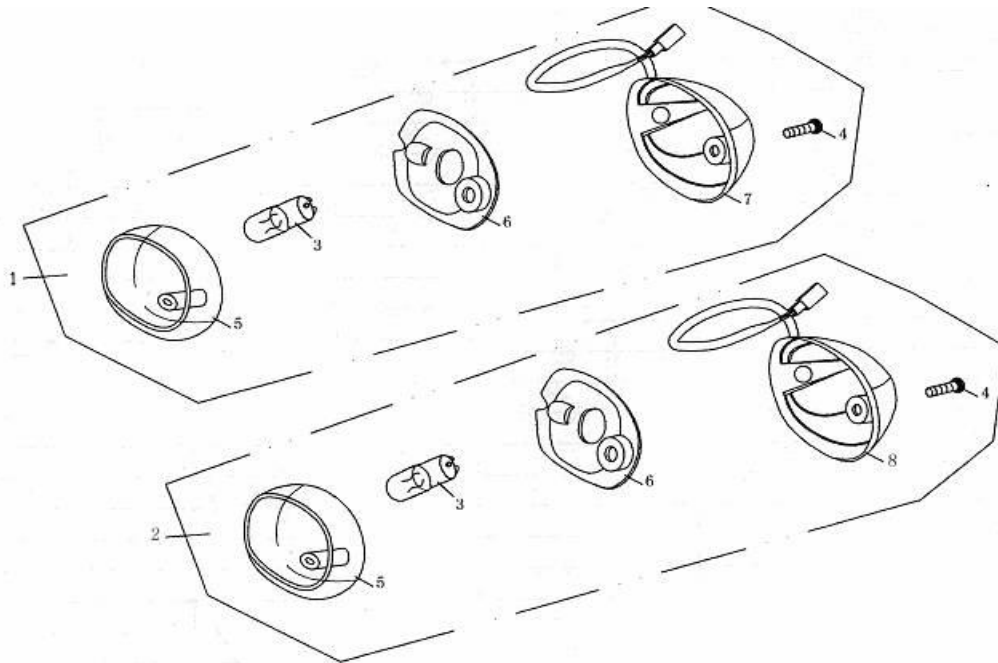
F-16 HEAD LIGHT & 大灯总成

REF.NO.	PART NO.	DESCRIPTION	Q.T.Y
1	F1601	Assy, headlight	1
2	F1602	Cover, headlight	1
3	F1603	Bulb, headlight	2
4	F1604	Socket, headlight	10
5	F1605	Dirtproof, headlight	10
6	F1606	Cable	10
7	F1607	Rear cover, position light	2
8	F1608	Socket, position light	2
9	F1609	Bulb, position	2



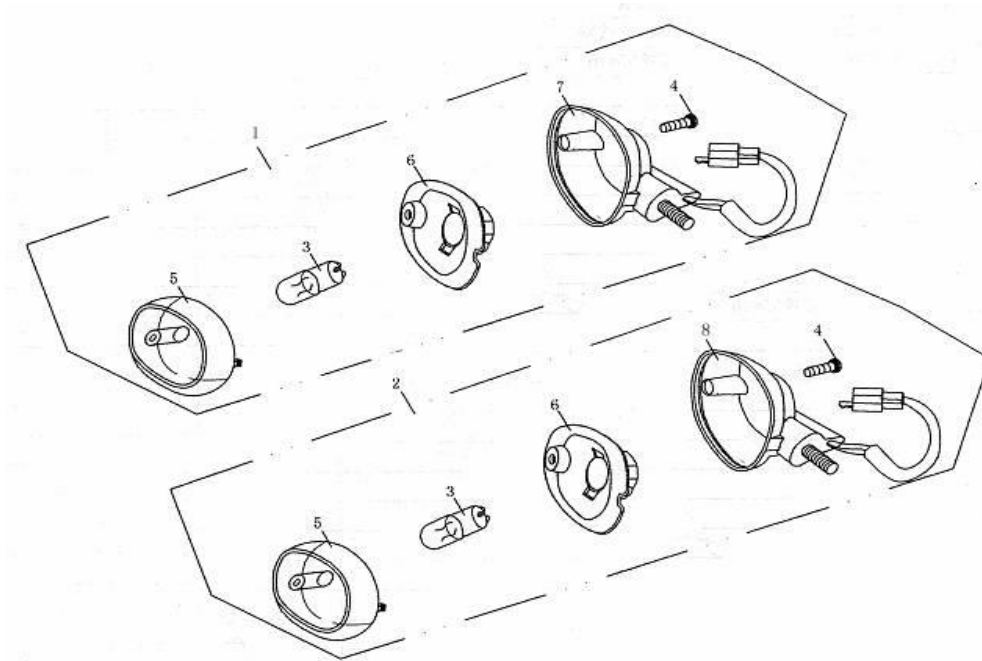
F-17 REAR LAMP ASSY&后尾灯

REF.NO.	PART NO.	DESCRIPTION	Q.T.Y
1	F1701	Assy, taillight	5
2	F1702	Screw M4X32	2
3	F1703	Outer cover, taillight	5
4	F1704	Bulb, taillight	1
5	F1705	Inner cover, taillight	1
6	F1706	Washer	3
7	F1707	Nut M6	3
8	F1708	cable	1



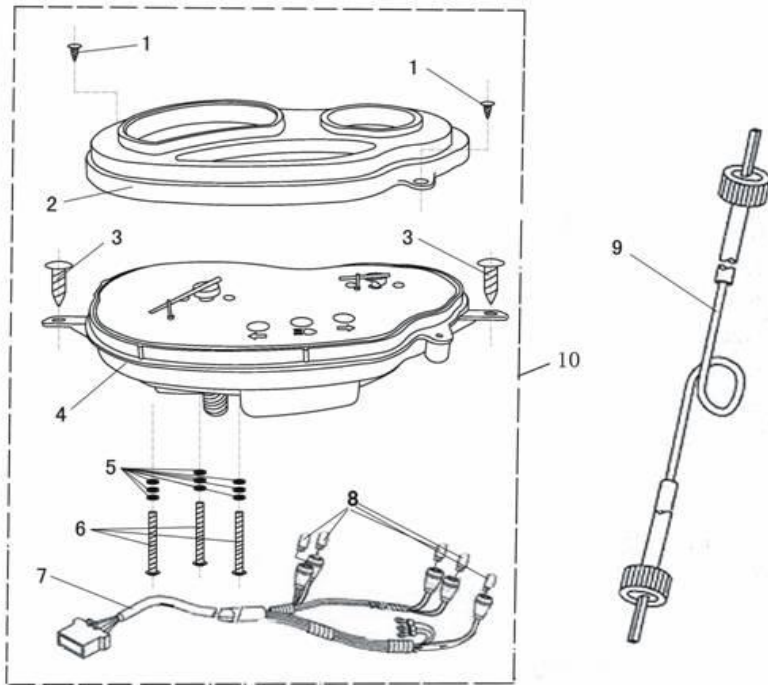
F-18 FRONT WINKER & 前转向灯

REF.NO.	PART NO.	DESCRIPTION	Q.T.Y
1	F1801	Assy, front turning light RH	4
2	F1802	Assy, front turning light LH	4
3	F1803	Bulb	2
4	F1804	Screw ST3.9X13	2
5	F1805	Cover, turning light	1
6	F1806	Inner flasher	2
7	F1807	socket ,Turning light , FR RH	1
8	F1808	socket ,Turning light , FR LH	1



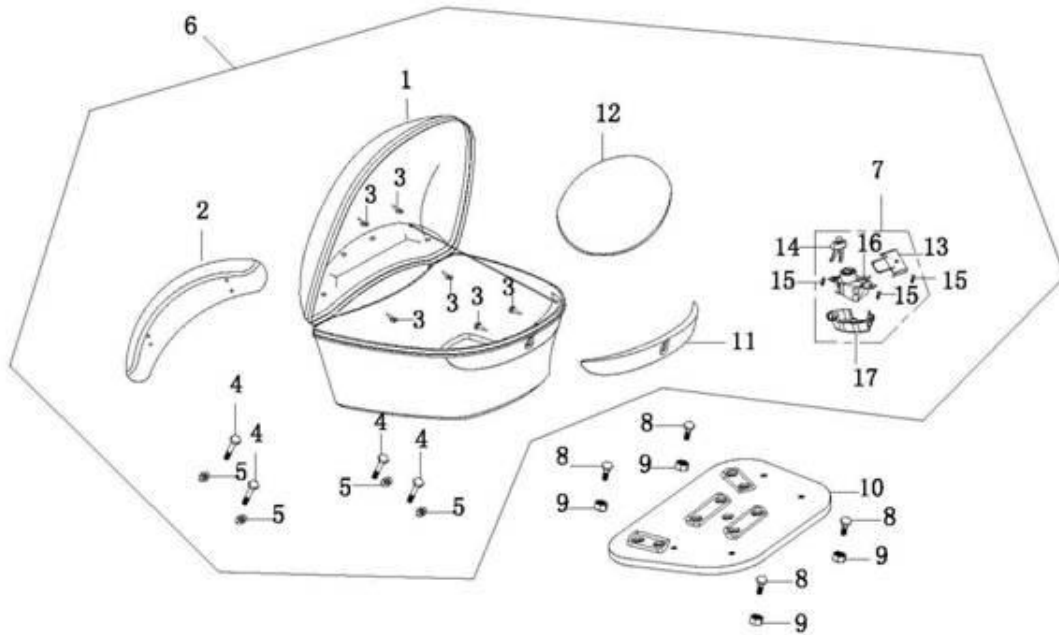
F-19 REAR WINKER & 后转向灯

REF.NO.	PART NO.	DESCRIPTION	Q.T.Y
1	F1901	Turning light assy, RR RH	4
2	F1902	Turning light assy, RR LH	4
3	F1903	Bulb	2
4	F1904	Screw 3.9x13	2
5	F1905	Cover, turning light	1
6	F1906	Inner flasher	2
7	F1907	Socket, turning light RR RH	1
8	F1908	Socket, turning light RR LH	1



F-20 METER&仪表

REF.NO.	PART NO.	DESCRIPTION	Q.T.Y
1	F2001	Screw ST2.9X7	2
2	F2002	Cover, meter	1
3	F2003	ST4.2X13	2
4	F2004	Meter body	1
5	F2005	Washer	6
6	F2006	Screw M3X25	3
7	F2007	Meter cable	1
8	F2008	Bulb	5
9	F2009	Soft axle cable	20
10	F2010	Meter assy	4



F-21 REAR Cargo Box

REF.NO.	PART NO.	DESCRIPTION	Q.T.Y
1	F2101	Rear cargo box	1
2	F2102	Backrest, box	1
3	F2103	ST4.8X19	6
4	F2104	Bolt M6x20	4
5	F2105	Washer	4
6	F2106	Rear cargo box	1
7	F2107	Assy, rear cargo box lock	1
8	F2108	Screw M6x24	4
9	F2109	Nut M6	4
10	F2110	Fasten plate	1
11	F2111	reflector	1
12	F2112	Washer, Tool box	1
13	F2113	Hook	1
14	F2114	Key	2
15	F2115	Bolt M6x20	3
16	F2116	Lock body	1
17	F2117	Lock cover	1