

## JL50QT-7 PARTS EXPLODE DRAWING

Edition No.: 01 , Year: 2007



CIXI KINGRING MOTORCYCLE

**INDEX**

E-1 CRANK CASE.....2

E-2 CYLINDER HEAD COVER·CYLINDER HEAD .....4

E-3 CYLINDER·CRANK CASE·PISTON .....6

E-4 RIGHT CRANKCASE COVER .....7

E-5 CARBURETOR .....8

E-6 DRIVEN PULLEY .....9

E-7 STARTINT MOTOR·OIL PUMP .....11

E-8 FAN COVER·GENERATOR .....12

E-9 TRANSMISSION.....13

F-1 FRONT WHEEL .....13

F-2 REAR WHEEL.....14

F-3 FRONT FORT.....15

F-4 MAIN STAND ASSY/SIDE STAND ASSY.....16

F-5 REAR SHOCK ABSORBER.....17

F-6 WIRE HARNESS.....18

F-7 HEAD LIGHT .....20

F-8 OPERATING SYSTEM.....21

F-9 METER ASSY .....23

F-10 FRONT WINKER .....24

F-11 REAR WINKER/FIND LAMP ASSY.....25

F-12 FRONT COVER/FLOOR PEDAL.....26

F-13 BODY COVER/LUGGAGE BOX.....27

F-14 LUGGAGE CARRIER.....28

F-15 REAR LIGHT ASSY/REAR FENDER ASSY .....29

F-16 FUEL TANK.....30

F-17 FRAME BODY .....31

F-18 EXHAUST MUFFER .....32

F-19 SEAT.....33

F-20 AIR CLEANER.....34

Address: Kingring Developing Zone, Cixi,Ningbo, Zhejiang 315301, P.R.China

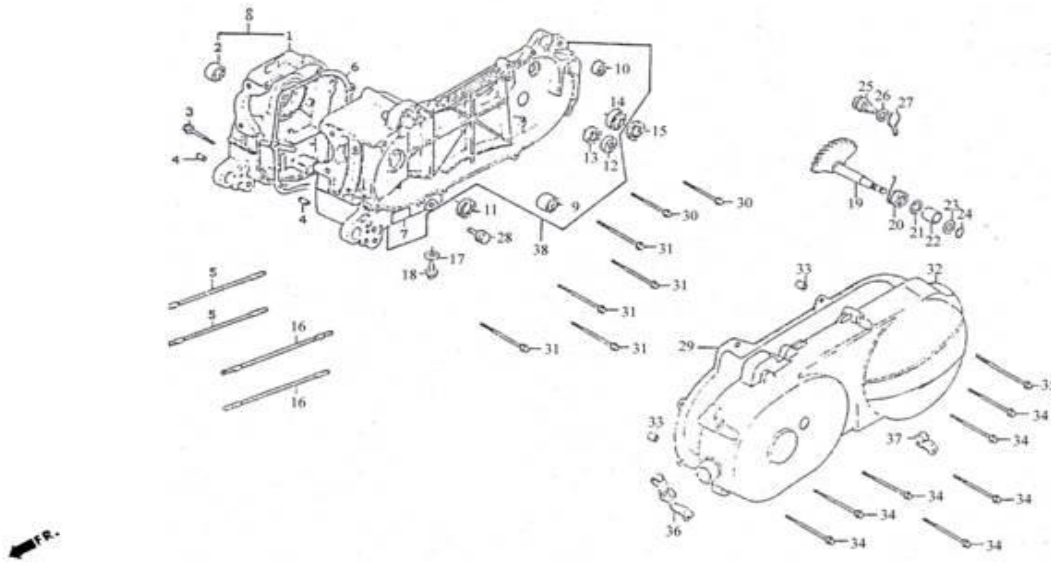
Tel:0086 574 63219030, 63218692,63218196;63218672

Fax: 0086 574 63218193

E-mail: motor@kingring.com

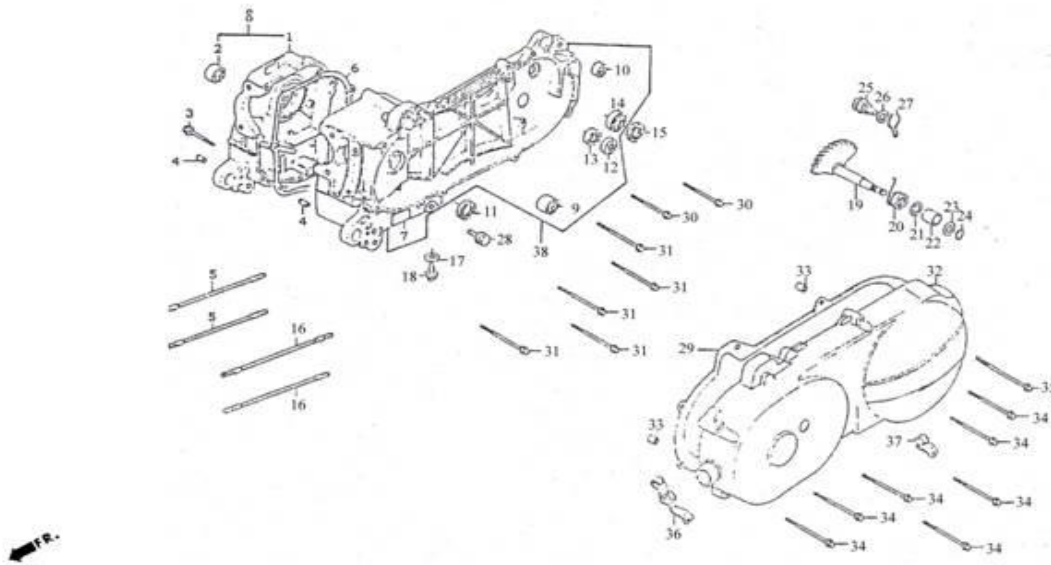
Website:www.kingringmotor.com; kingring.en.alibaba.com

<b>Attention: Please kindly note the latest unit prices (usd) in the below charts are updated every month according to the latest exchange rate</b>	
<b>MONTH - YEAR:</b>	<b>March . 2014</b>
<b>Current exchange rate:</b>	<b>7,8073</b>



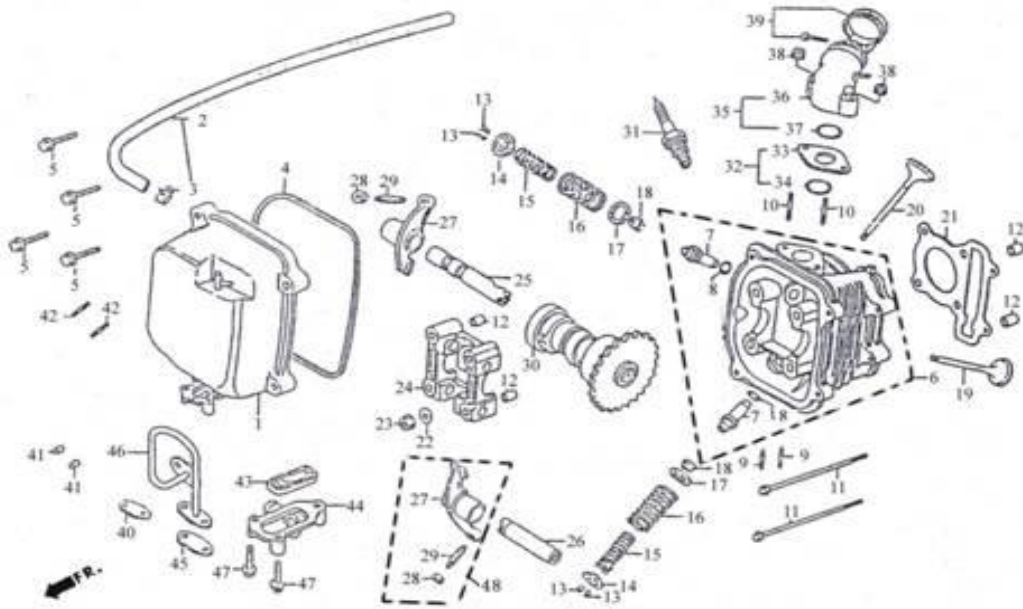
E-01 Crank case

REF.NO.	PART NO.	DESCRIPTION	Q.T.Y
1	E0101	CRANK CASE COMP RIGHT	1
2	E0102	RUB BUSH ENG HANGER	1
3	E0103	BOLT FLANGE SH M6×45	1
4	E0104	DOWEL PIN M8×14	2
5	E0105	BOLT STUD M7×168	2
6	E0106	GASTER CRANK CASE	1
7	E0107	CRANK CASE CIMP LEFT	1
8	E0108	CASE SET R CRANK	1
9	E0109	RUB BUSH ENG HANGER	1
10	E0110	UNDER RUBBER BUSH RR CUSHION	1
11	E0111	OIL SEAL 19.8×30×5	1
12	E0112	BEARING BALL RADIAL 6203	1
13	E0113	BRG BALL RADIAL 6201	1
14	E0114	BRG BALL RADIAL 6203	1
15	E0115	OIL SEAL 17×30×6	1
16	E0116	BOLT STUD 7×176	2
17	E0117	WASHER 8	1
18	E0118	BOLT OIL DRAIN	1
19	E0119	SPINDLE COMP KICK STARTER	1
20	E0120	SPRING KICK RETURN	1
21	E0121	COLLAR KICK BOSS	1
22	E0122	BUSH KICK SPINDLE	1
23	E0123	WASHER KICK SPINDLE	1
24	E0124	CIRCLIP EX 14	1



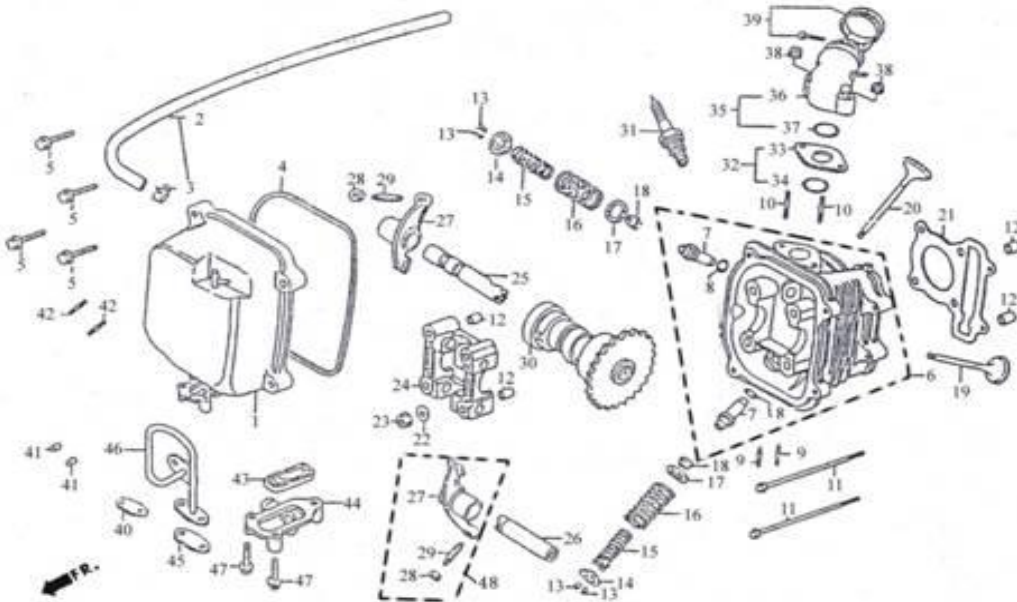
E-01 Crank case

REF.NO.	PART NO.	DESCRIPTION	Q.T.Y
25	E0125	GEAR COMP KICK DRIVEN	1
26	E0126	WASHER THRUST 10	1
27	E0127	SPG KICK DRIVEN GEAR	1
28	E0128	BOLT ASSY DRAIN PLUG	1
29	E0129	GASKET L COVER	1
30	E0130	BOLT FLANGE 8×35	2
31	E0131	BOLT FLANGE 8×40	5
32	E0132	COVER COMP L SIDE	1
33	E0133	DOWEL PIN 8×14	2
34	E0134	BOLT FLANGE 6×35	7
35	E0135	BOLT SPECIAL 8	1
36	E0136	CLAMPER THROTTLE CABLE	1
37	E0137	CLAMPER BRAKE CABLE	1
38	E0138	CRANK CASE SETL	1



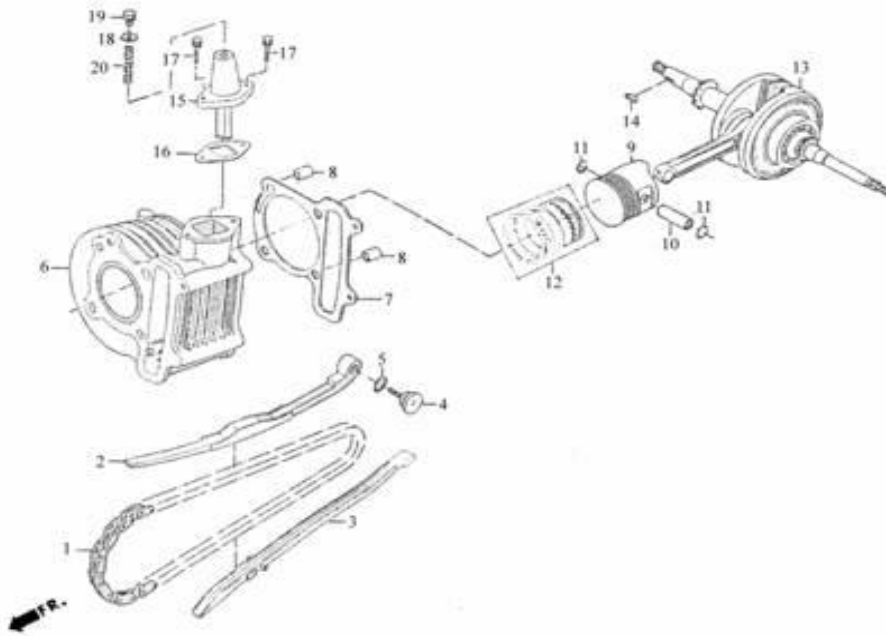
E-02 Cylinder Head Cover-Cylinder Head

REF.NO.	PART NO.	DESCRIPTION	Q.T.Y
1	E0201	COVER COMP HEAD	1
2	E0202	TUBE BREATHER	1
3	E0203	CLIP B8 TUBE	1
4	E0204	GASKET HEAD COVER	1
5	E0205	BOLT FLANGE SH 6X25	4
6	E0206	HEAD COMP CYLN	1
7	E0207	GUIDE VALVE	2
8	E0208	O-RING 9X1.6	2
9	E0209	BOLT STUD 6X32	2
10	E0210	BOLT STUD II 6X50	2
11	E0211	BOLT FLANGE 6X85	2
12	E0212	PIN DOWEL SPECIAL 8X14	4
13	E0213	COTTER VALVE	4
14	E0214	RETAINER VALVE SPRING	2
15	E0215	SPG VALVE INNER	2
16	E0216	SPRING VALVE OUTER	2
17	E0217	SEAT VALVE Spring OUTER	2
18	E0218	SEAT VALVE STEM	2
19	E0219	VALVE EXHAUST	1
20	E0220	VALVE INLET	1
21	E0221	GASKET CYLINDER HEAD	1
22	E0222	WASHER SERALING 7MM	4
23	E0223	NUT FLANGE 7M/M	4
24	E0224	HOLDER CAM SHAFT	1
25	E0225	SHAFT COMP IN ROCKER ARM	1



E-02 Cylinder Head Cover-Cylinder Head

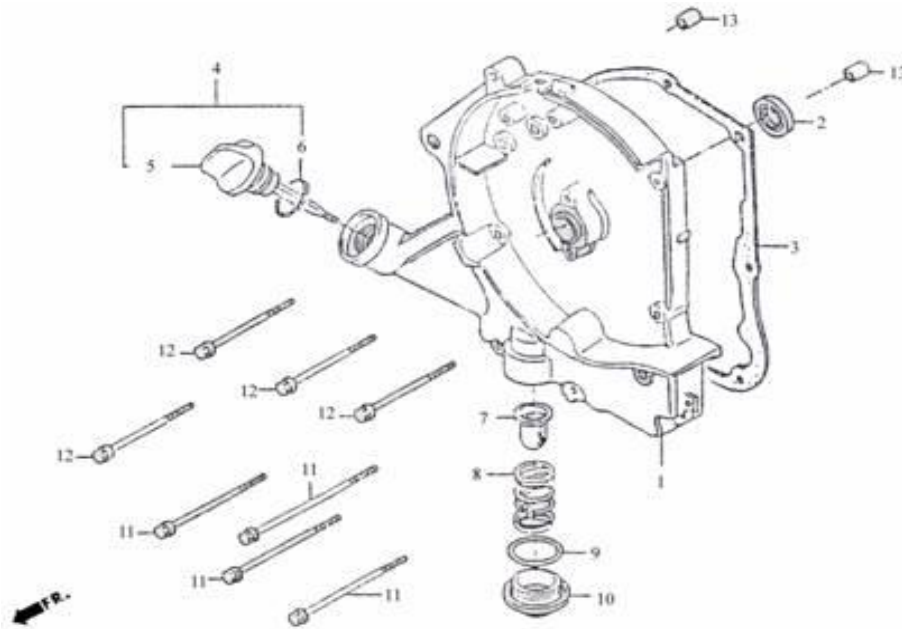
REF.NO.	PART NO.	DESCRIPTION	Q.T.Y
26	E0226	SHAFTEXH ROCKER ARM	1
27	E0227	ARM VALVE ROCKER	2
28	E0228	NUT TAPPET ADJG	2
29	E0229	SCREW TAPPET ADJUSTING	2
30	E0230	SHAFT COMP CAM	1
31	E0231	SPARK PLUG(C7HSA)	1
32	E0232	INSULATOR CARB ASSY	1
33	E0233	INSULATOR CARB	1
34	E0234	O-RING 20.6X1.9	1
35	E0235	PIPE ASSY INLET	1
36	E0236	PIPE COMP INLET	1
37	E0237	O-RING 20.6X1.9	1
38	E0238	NUT FLANGE 6MM	2
39	E0239	BAND INSULATOR	1
40	E0240	GAKT A/PIPE	1
41	E0241	NUT HEX CAP 6MM	2
42	E0242	BOLT STUD 6X16	2
43	E0243	REED VALVE COMP	1
44	E0244	COVER REED VALVE	1
45	E0245	GAKT A/I PIPE	1
46	E0246	PIPE COMP AIR	1
47	E0247	BOLT FLANGER 6X40	2
48	E0248	VALVE ROCKER ASSY.	1



E-03 Cylinder-Crankcase-Piston

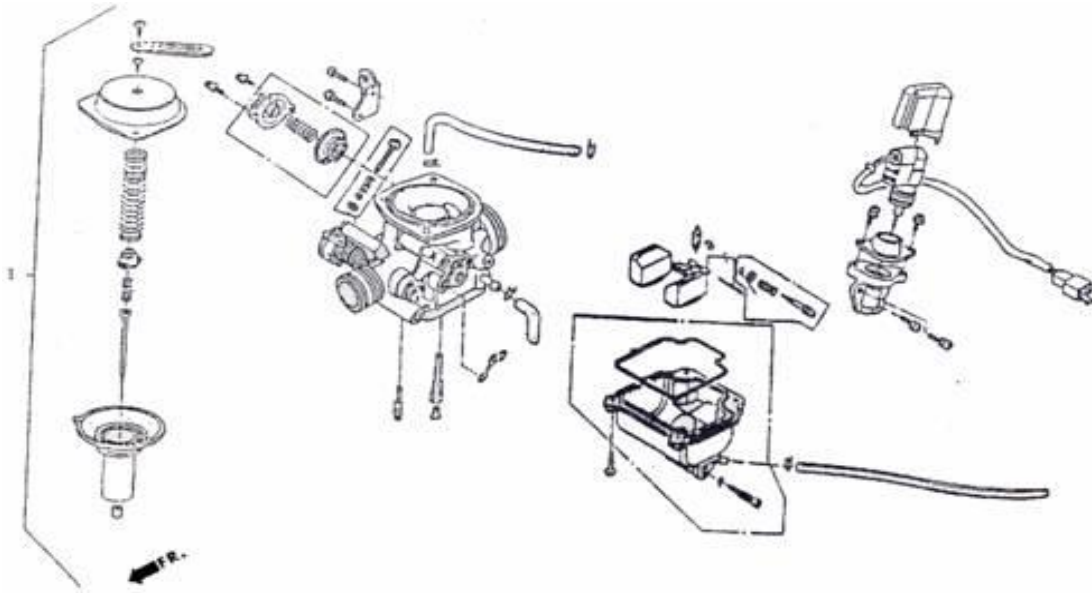
REF.NO.	PART NO.	DESCRIPTION	Q.T.Y
1	E0301	CHAIN CAM	1
2	E0302	TENSIONER CAM CHAIN	1
3	E0303	GUIDE COMP CAM CHAIN	1
4	E0304	PIVOT CAM CHAIN TENSIONER	1
5	E0305	O-RING 15.5-1.5	1
6	E0306	CYLINDER COMP	1
7	E0307	GASKET CYLINDER	1
8	E0308	PIN DOWEL SPECIAL 8X14	2
9	E0309	PISTON	1
10	E0310	PIN PISTON	1
11	E0311	PISTON PIN CLIF	2
12	E0312	RING SET PISTON	1
13	E0313	CRANK SHAFT COMP	1
14	E0314	KEY WOODRUFF	1
15	E0315	ADJUSTER CAM CHAIN	1
16	E0316	GASKET CAM CHAIN	1
17	E0317	BOLT FLANGE 6X18	2
18	E0318	WASHER SEALING 8X16X1.6	1
19	E0319	PLUG ADJUSTER	1
20	E0320	SPRING CAM CHAIN ADJUSTER	1





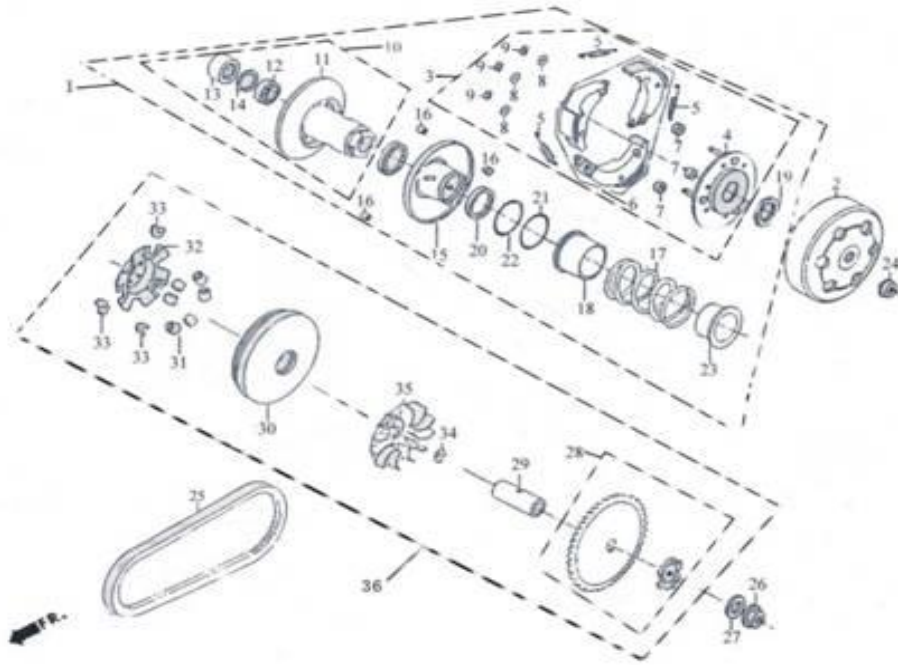
E-04 Right Crankcase Cover

REF.NO.	PART NO.	DESCRIPTION	Q.T.Y
1	E0401	COVER R CRANK CASE	1
2	E0402	OIL SEAL 16.4X30X5	1
3	E0403	GASTER R COVER	1
4	E0404	GAUGE OIL LEVEL ASSY	1
5	E0405	GAUGE OIL LEVEL	1
6	E0406	O-RING 18X3	1
7	E0407	SCREEN OIL FILTER	1
8	E0408	SPG OIL FILTER SCREEN	1
9	E0409	O-RING 30.8M/M	1
10	E0410	HOLE CAP TAPPET ADJUSTING	1
11	E0411	BOLT FLANGE SH M6X100	4
12	E0412	BOLT FLANGE M6X85	4
13	E0413	DOWEL PIN 8X14	2



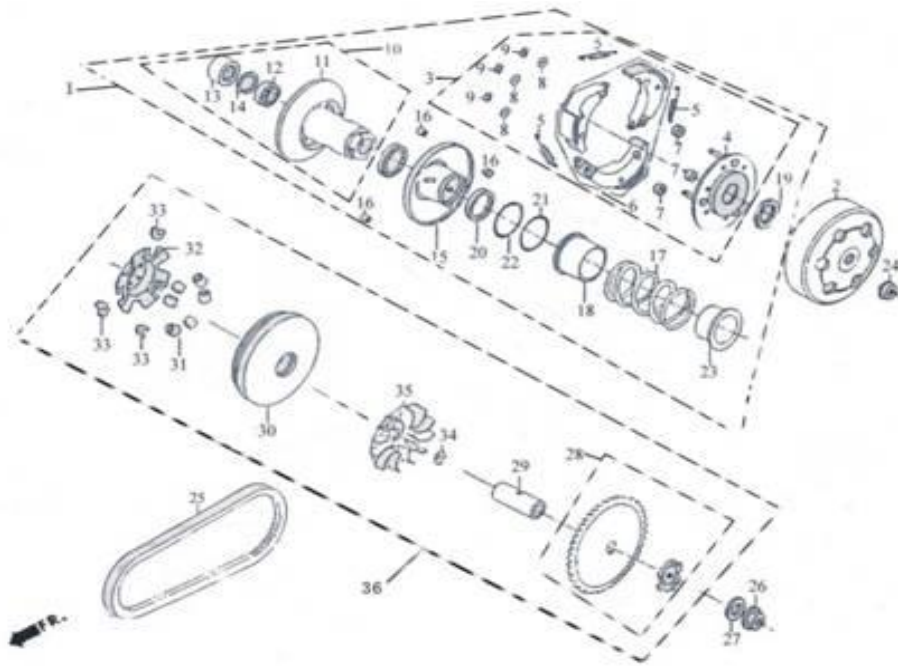
E-05 Carburetor

REF.NO.	PART NO.	DESCRIPTION	Q.T.Y
1	E0501	CARBURETOR ASSY	1



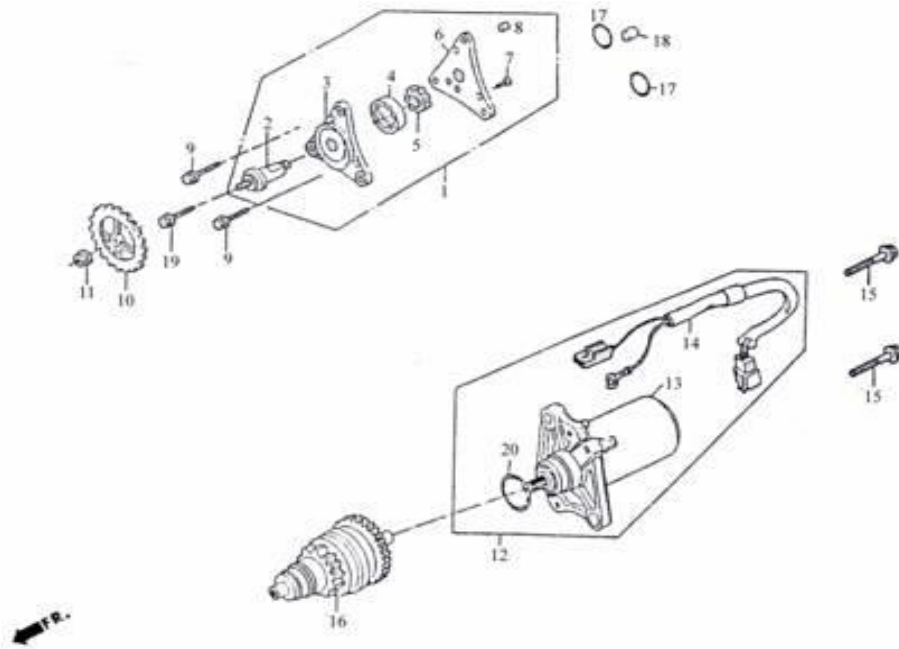
E-06 Driven Pulley

REF.NO.	PART NO.	DESCRIPTION	Q.T.Y
1	E0601	PLATE SUB ASSY DRIVE	1
2	E0602	CLUTCH OUTER	1
3	E0603	PLATE ASSY DRIVE	1
4	E0604	PLATE COMP DRIVE	1
5	E0605	SPRING CLUTCH	3
6	E0606	WEIGHT SET CLUTCH	1
7	E0607	RUBBER CLUTCH DUMPER	3
8	E0608	6M/M THRUST WASHER	3
9	E0609	CIRCLIP 6MM	3
10	E0610	FACE ASSY DRIVEN	1
11	E0611	FACE COMP DRIVEN H1	1
12	E0612	BRG RADIAL BALL 6901U	1
13	E0613	BRG NEEDLE 17X25X18WS	1
14	E0614	CIRCLIP IN 24	1
15	E0615	FACE COMP MOVABLE DRIVEN	1
16	E0616	PIN GUIDE	3
17	E0617	SPG DRIVEN FACE	1
18	E0618	COLLAR SEAL	1
19	E0619	NUT SPECIAL 28MM	1
20	E0620	OIL SEAL 34X39X3	2
21	E0621	O-RING 36X1.5	1
22	E0622	O-RING 39.2X2.2	1
23	E0623	COLLAR SPG	1
24	E0624	NUT FLANGE 10MM	1
25	E0625	BELT DRIVE	1



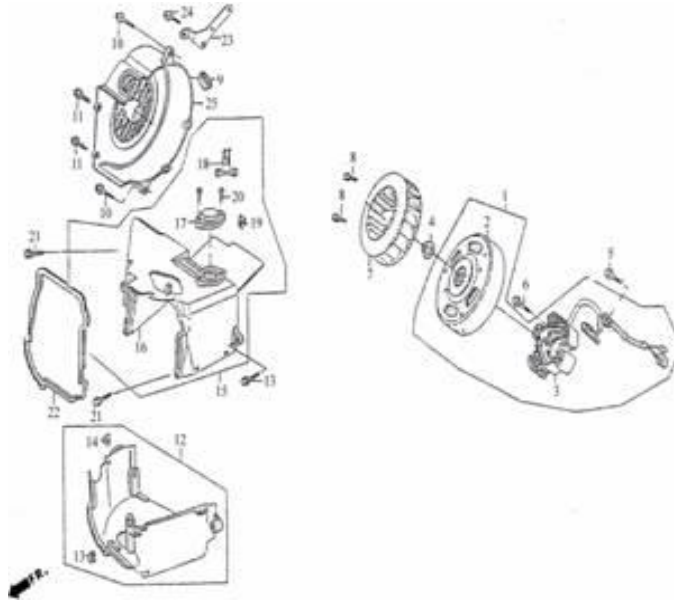
E-06 Driven Pulley

REF.NO.	PART NO.	DESCRIPTION	Q.T.Y
26	E0626	NUT HEX 12MM	1
27	E0627	WASHER SPECIAL 12MM	1
28	E0628	FACE DRIVE	1
29	E0629	BOSS DRIVE FACE	1
30	E0630	FACE COMP MOVABLE DRIVE	1
31	E0631	ROLLER COMP WEIGHT 6.5gr	6
32	E0632	PLATE RAMP	1
33	E0633	PIECE SLIDE	3
34	E0634	RATCHET KICK STARTER	1
35	E0635	FAN CVT COOLING	1
36	E0636	DRIVER ASSY.	1



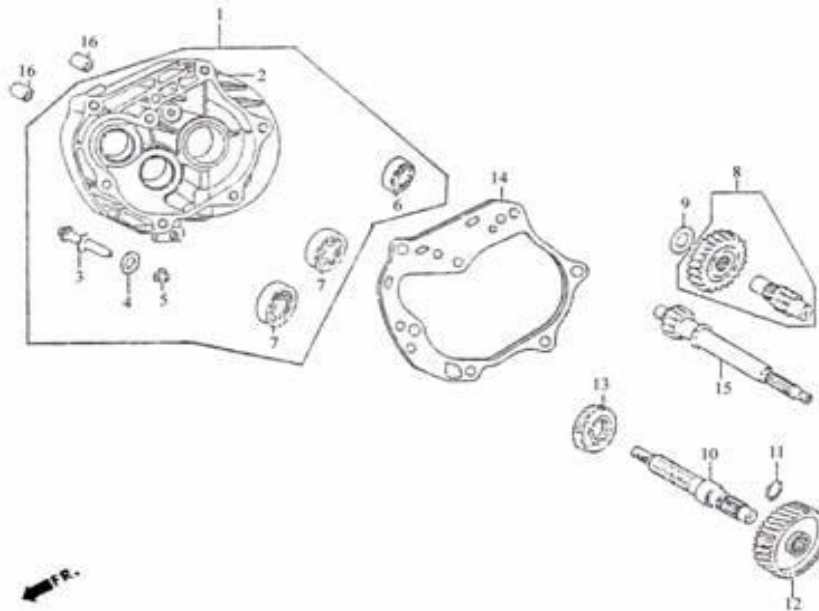
E-07 Starting Motor-Oil Pump

REF.NO.	PART NO.	DESCRIPTION	Q.T.Y
1	E0701	PUMP ASSY OIL	1
2	E0702	SHAFT OIL PUMP	1
3	E0703	BODY OIL PUMP	1
4	E0704	ROTOR OIL PUMP OUTER	1
5	E0705	ROTER OIL PUMP INNER	1
6	E0706	PLATE OIL PUMP	1
7	E0707	SCREW 4X10	3
8	E0708	DOWEL PIN 4X6.5	1
9	E0709	BOLT FLANGE SH 6X20	2
10	E0710	GEAR OIL PUMP DRIVEN	1
11	E0711	NUT FLANGE 6MM	1
12	E0712	MOTOR ASSY START	1
13	E0713	MOTOR UNIT START	1
14	E0714	SUB HARNESS	1
15	E0715	BOLT FLANGE SH 6X25	2
16	E0716	PINION ASSY STARTER	1
17	E0717	O-RING 9X1.6	2
18	E0718	PIN DOWELL 8X10	1
19	E0719	BOLT FLANGE SH 6X25	1
20	E0720	O-RING	1



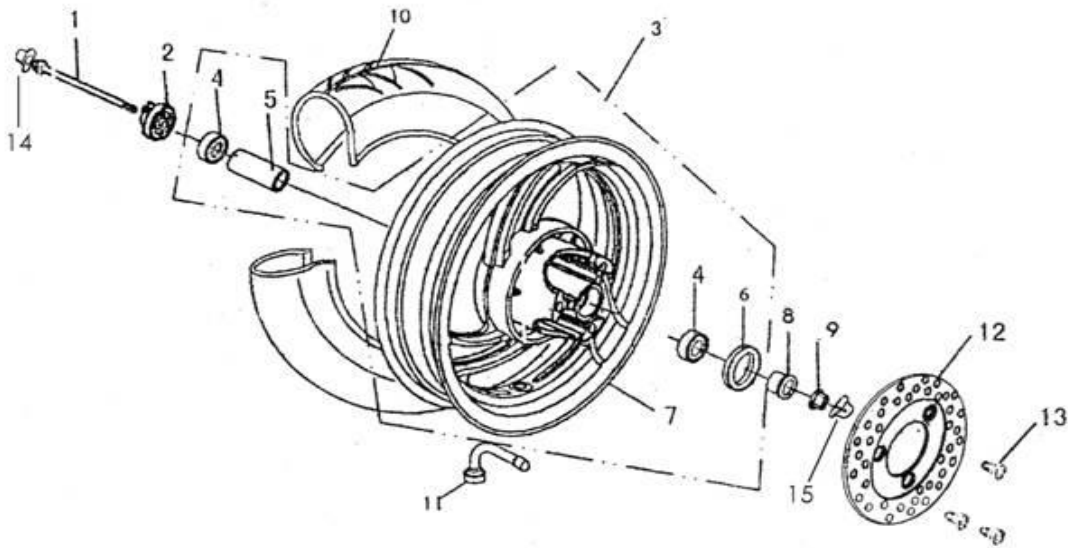
E-08 Fan Cover Generator

REF.NO.	PART NO.	DESCRIPTION	Q.T.Y
1	E0801	AC GEN ASSY	1
2	E0802	FLYWHEEL COMP	1
3	E0803	STATOR COMP	1
4	E0804	NUT FLANGE 10MM	1
5	E0805	BOLT HEX 5X12	2
6	E0806	BOLT FLANGE SH 6X22	2
7	E0807	FAN COMP COOLING	1
8	E0808	BOLT FLANGE SH 6X18	4
9	E0809	GROM B SIDE PNL	1
10	E0810	BOLT FLANGE SH 6X25	3
11	E0811	SCREW TAPPING 5X16	2
12	E0812	SHROUD ASSY A	1
13	E0813	SHROUD COMP A	1
14	E0814	NUT CLIP 6MM	2
15	E0815	SHROUD ASSY B	1
16	E0816	SHROUD COMP B	1
17	E0817	BOX TENSIONER LIFTER	1
18	E0818	CLIP VACUUM TUBE	1
19	E0819	NUT CLIP 6MM	1
20	E0820	SCREW TAPPING 4X12	2
21	E0821	BOLT FLANG SH 6X16	2
22	E0822	SEAL SHROUD	1
23	E0823	STAY FENDER	1
24	E0824	BILT FLANGE SH 6X12	1
25	E0825	COVER ASSY FAN	1



E-09 Transmission

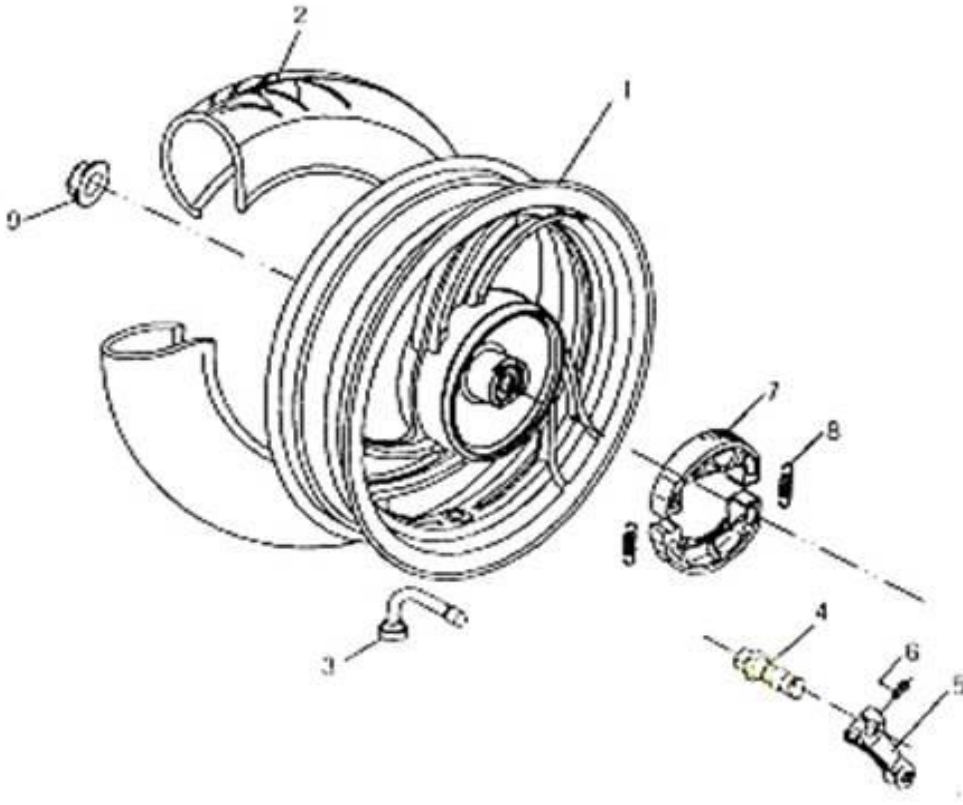
REF.NO.	PART NO.	DESCRIPTION	Q.T.Y
1	E0901	CASE SET MISSION	1
2	E0902	MISSION CASE BODY	1
3	E0903	PIN BRAKE SHOE ANCHOR	1
4	E0904	O RING 7.5X1.5	1
5	E0905	NUT FLANGE M8	1
6	E0906	BRG BALL RAKIAL 6004UU	1
7	E0907	BRG BALL RADIAL 6201	2
8	E0908	SHAFT COMP COUNTER	1
9	E0909	WASHER SIDE 12MM	1
10	E0910	SHAFT FINAL	1
11	E0911	CIRCLIP EX 20	1
12	E0912	GEAR FINAL	1
13	E0913	OIL SEAL 27X42X7	1
14	E0914	GASKET MISSION CASE	1
15	E0915	SHAFT DRIVE	1
16	E0916	DOWEL PIN 10X20	2



F-01 Front Wheel

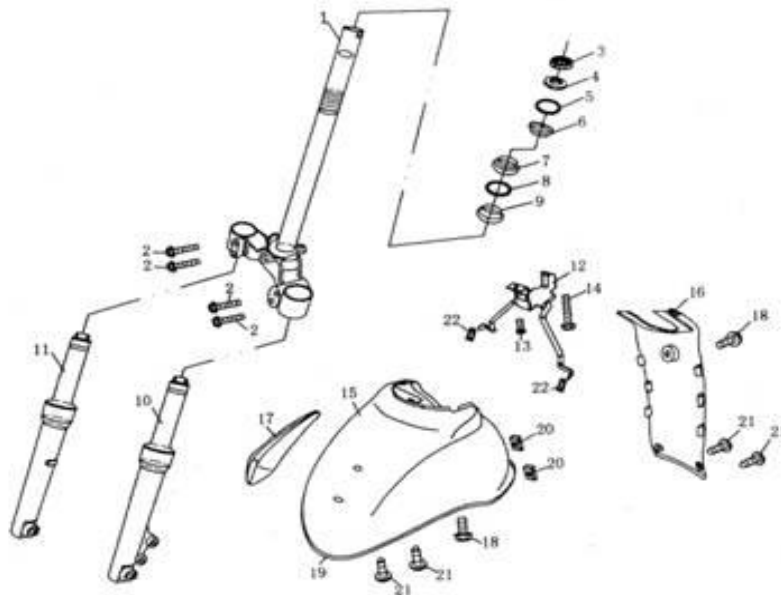
REF.NO.	PART NO.	DESCRIPTION	Q.T.Y
1	F0101	AXLE FR.WHEEL	1
2	F0102	GEAR BOX ASSY SPEED	1
3	F0103	FRONT WHEEL ASSY	1
4	F0104	BEARING 6201	2
5	F0105	CENTRAL SET	1
6	F0106	SEAL DRST	1
7	F0107	FRONT WHEEL	1
8	F0108	BUSHING	1
9	F0109	NUT M12X1.25	1
10	F0110	TIRE 3.50-10	1
11	F0111	VALVE	1
12	F0112	DISK BRAKE	1
13	F0113	DISK BRAKE BOLT	3
14	F0114	RUBBER CAP	1
15	F0115	RUBBER CAP	1





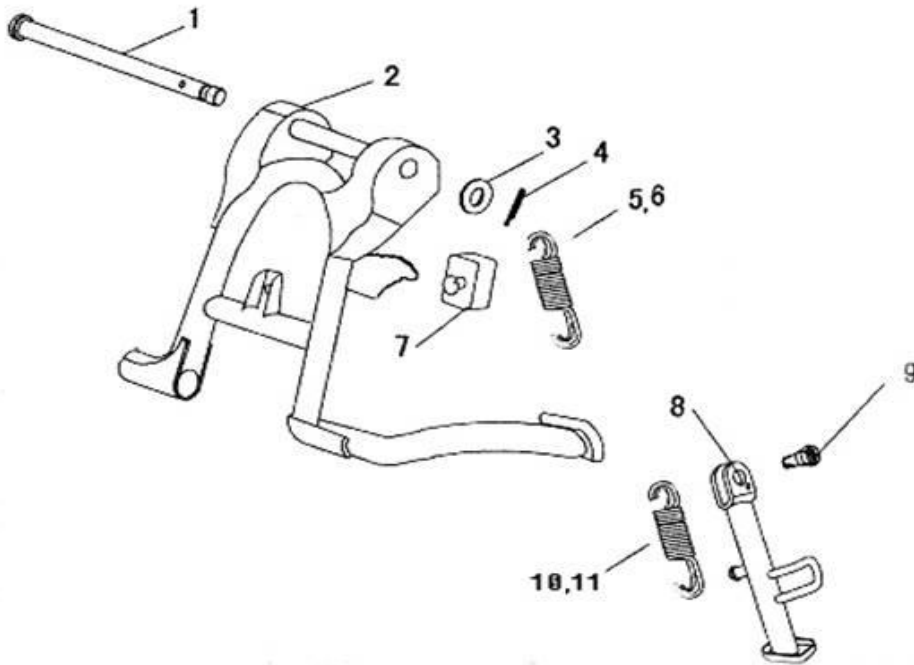
F-02 Rear Wheel

REF.NO.	PART NO.	DESCRIPTION	Q.T.Y
1	F0201	REAR WHEEL	1
2	F0202	TYRE3.50-10	1
3	F0203	TYRE VALVE	1
4	F0204	REAR BRAKE CAM	1
5	F0205	REAR BRAKE LEVER WELDING ASSY	1
6	F0206	BOLT M6×35	1
7	F0207	BRAKE SHOE ASSY	2
8	F0208	SPRING	2
9	F0209	NUT. SELF. LOCK	1



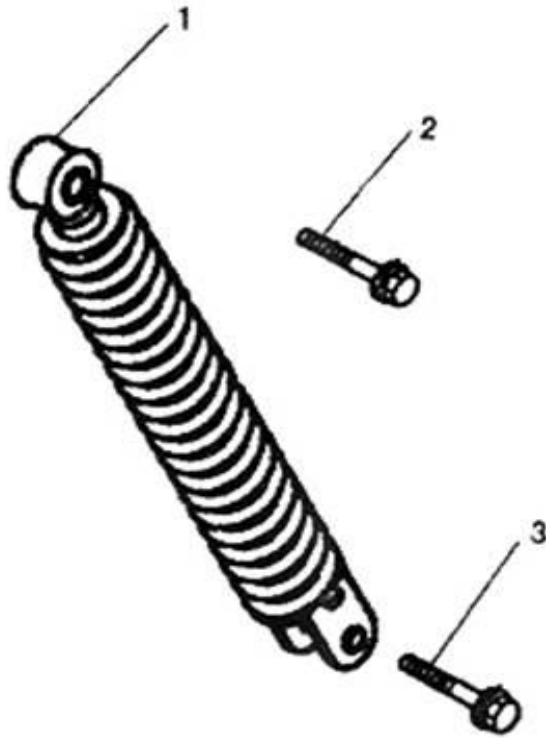
F-03 Front Fort

REF.NO.	PART NO.	DESCRIPTION	Q.T.Y
1	F0301	STEERING COLUMN WELD ASSY	1
2	F0302	BOLT FLLANGE M8×35	4
3	F0303	ASSMBLY NUT STEERING COLUMN	1
4	F0304	RACE STRG TOP CONE	1
5	F0305	BALL STEEL ASSY	1
6	F0306	RACE UNDER STRG BALL	1
7	F0307	RACE UNDER STRG BALL	1
8	F0308	BALL STEEL ASSY	1
9	F0309	RACE STRG BOT CONE	1
10	F0310	FR.FORK SHOCK ABSORBER ASSY(L)	1
11	F0311	FR.FORK SHOCK ABSORBER ASSY(R)	1
12	F0312	FENDER WELDING ASSY	1
13	F0313	BOLT	1
14	F0314	RUBBER TAILLIGHT MOUNTING	1
15	F0315	FR.PART,FR.FENDER	1
16	F0316	REAR PART,FR.FENDER	1
17	F0317	ORNAMENT , FR.FENDER	2
18	F0318	BOLT	2
20	F0320	CLIP(4.2)	2
21	F0321	SCREW TAPPING ST4.2×13	2
22	F0322	SMALL RUBBER,FR.FENDER	2



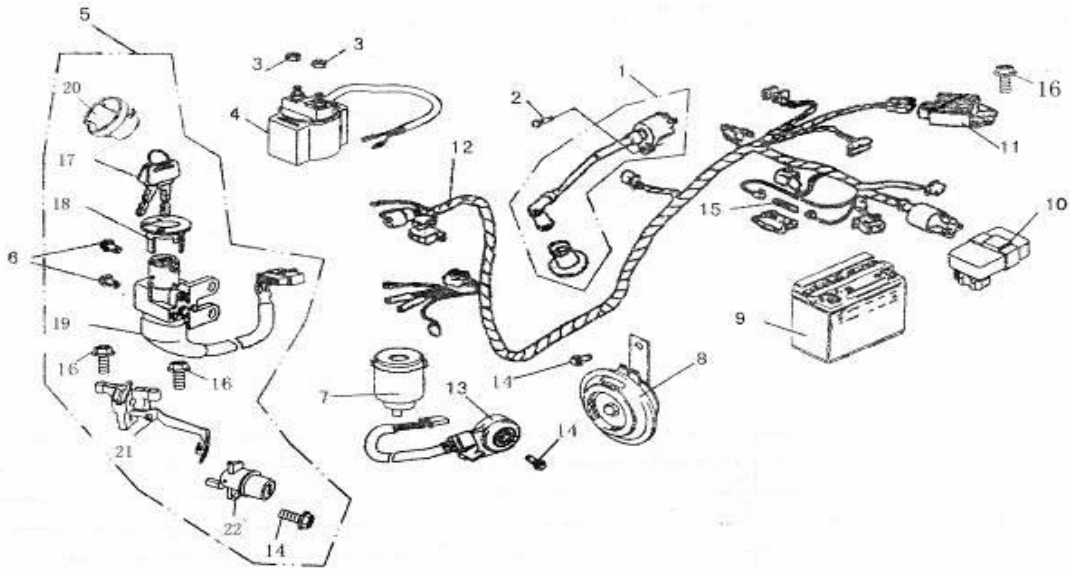
F-04 Main stand assy/Side stand assy

REF.NO.	PART NO.	DESCRIPTION	Q.T.Y
1	F0401	AXLE,CENTER STAND	1
2	F0402	CENTER STAND ASSY	1
3	F0403	WASHER 8	1
4	F0404	COTTER PIN1.5×2.4	1
5	F0405	SPRING	1
6	F0406	SPRING	1
7	F0407	RUBBER,CENTER STAND	1
8	F0408	SIDE STAND WELDING ASSY	1
9	F0409	BOLT,SIDE STAND	1
10	F0410	SPRING SIDE STANDI	1
11	F0411	SPRING SIDE STANDΠ	1



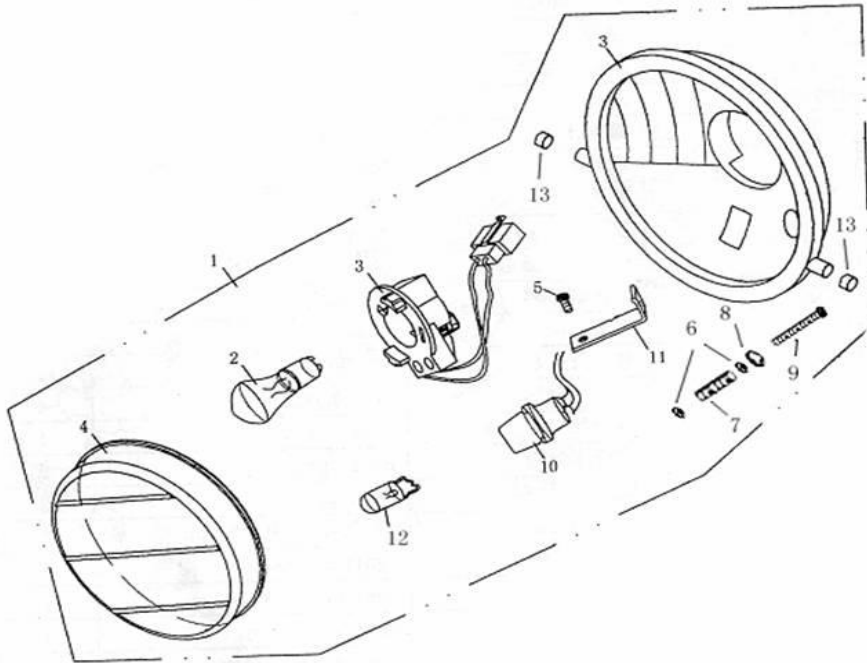
F-05 Rear shock absorber

REF.NO.	PART NO.	DESCRIPTION	Q.T.Y
1	F0501	REAR SHOCK ABSORBER ASSY	1
2	F0502	BOLT	1
3	F0503	BOLT	1



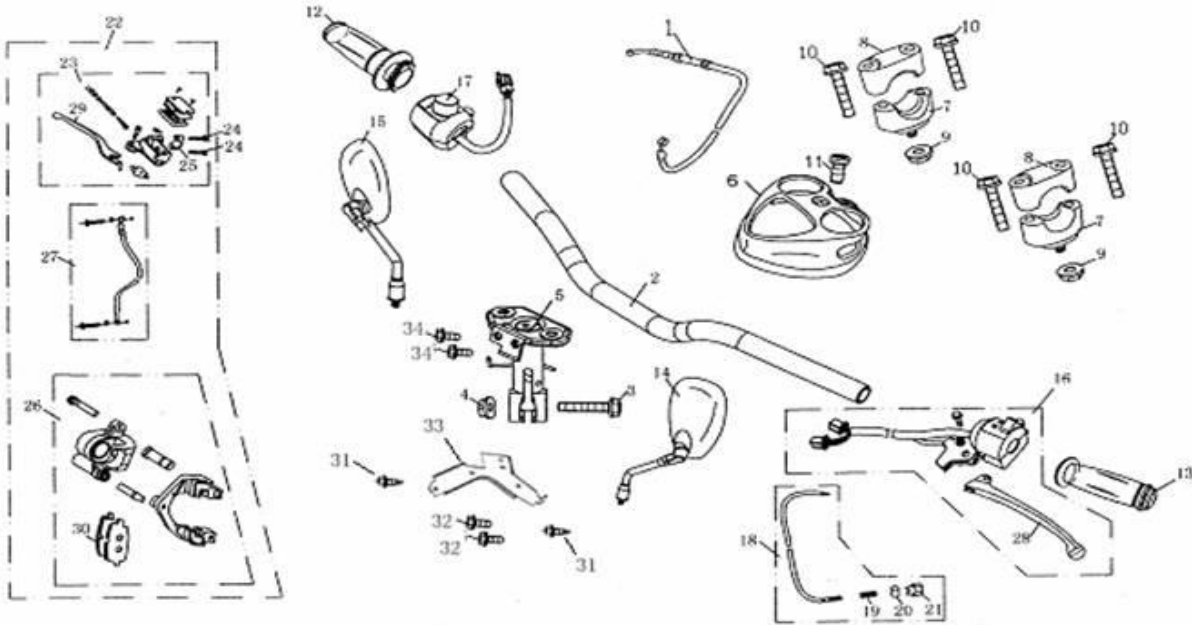
F-06 Wire harness

REF.NO.	PART NO.	DESCRIPTION	Q.T.Y
1	F0601	COIL ASSY IGNITION	1
2	F0602	BOLT M6×20	1
3	F0603	NUT M6	2
4	F0604	IGNITION COIL	1
5	F0605	SWITCH ASSY	4
6	F0606	BOLT	2
7	F0607	GLITTERY RELAY	1
8	F0608	HORN COMP	1
9	F0609	BATTERY	1
10	F0610	CDI	1
11	F0611	RECTIFIER ADJUSTER	1
12	F0612	WIRING ASSY	1
13	F0613	(OFF)SWITCH ASSY	1
14	F0614	BOLT M6×16	14
15	F0615	FUSE	1
16	F0616	BOLT M6×12	2
17	F0617	KEY	2
18	F0618	IGNITION SWITCH CAP	1
19	F0619	IGNITION SWITCH	1
20	F0620	FUEL COVER ASSY	1
21	F0621	SEAT LOCK ASSY	1
22	F0622	SEAT SWITCH LOCK ASSY	1



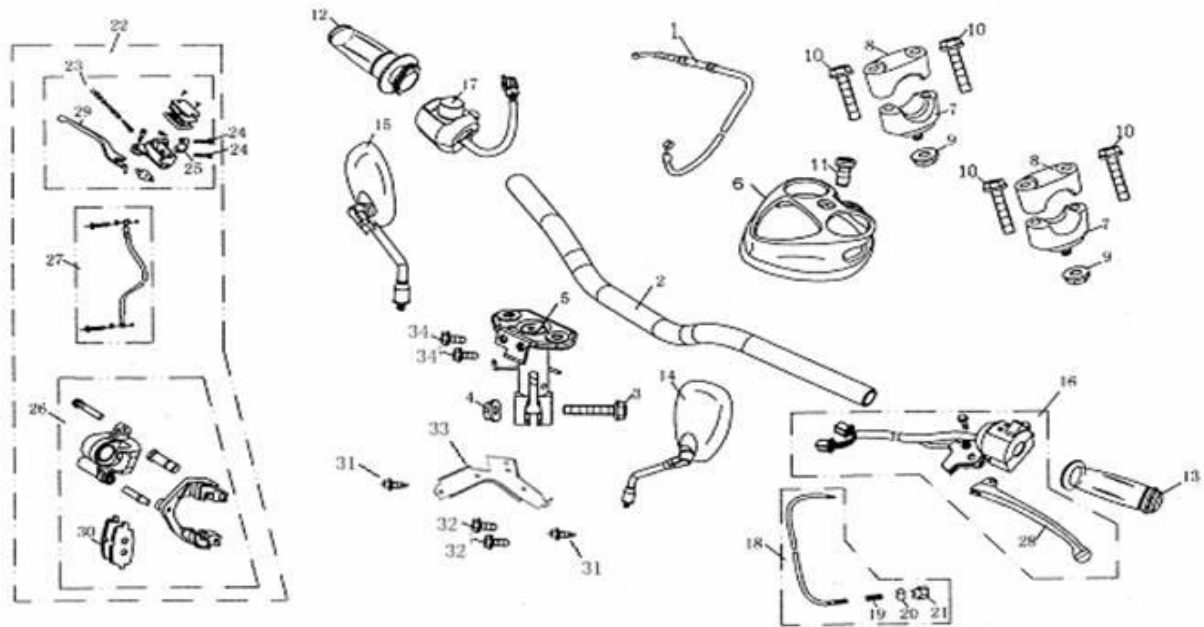
F-07 Headlight

REF.NO.	PART NO.	DESCRIPTION	Q.T.Y
1	F0701	HEAD LIGHT ASSY	3
2	F0702	HEAD LIGHT BULB	1
3	F0703	LAMP HOUSING	1
4	F0704	FR.HEAD LIGHT,COVER	1
5	F0705	BOLT M5×10	1
6	F0706	WASH 5	2
7	F0707	SPRING	1
8	F0708	BIG WASHER 5	1
9	F0709	BOLT M5×45	1
10	F0710	POSITION LAMP SETTING SOCKET	1
11	F0711	HEAD LIGHT SETTING BLOCK	1
12	F0712	POSITION LAMP BULB	1
13	F0713	SAFETYPAD	2



F-08 Operating System (disk brake)

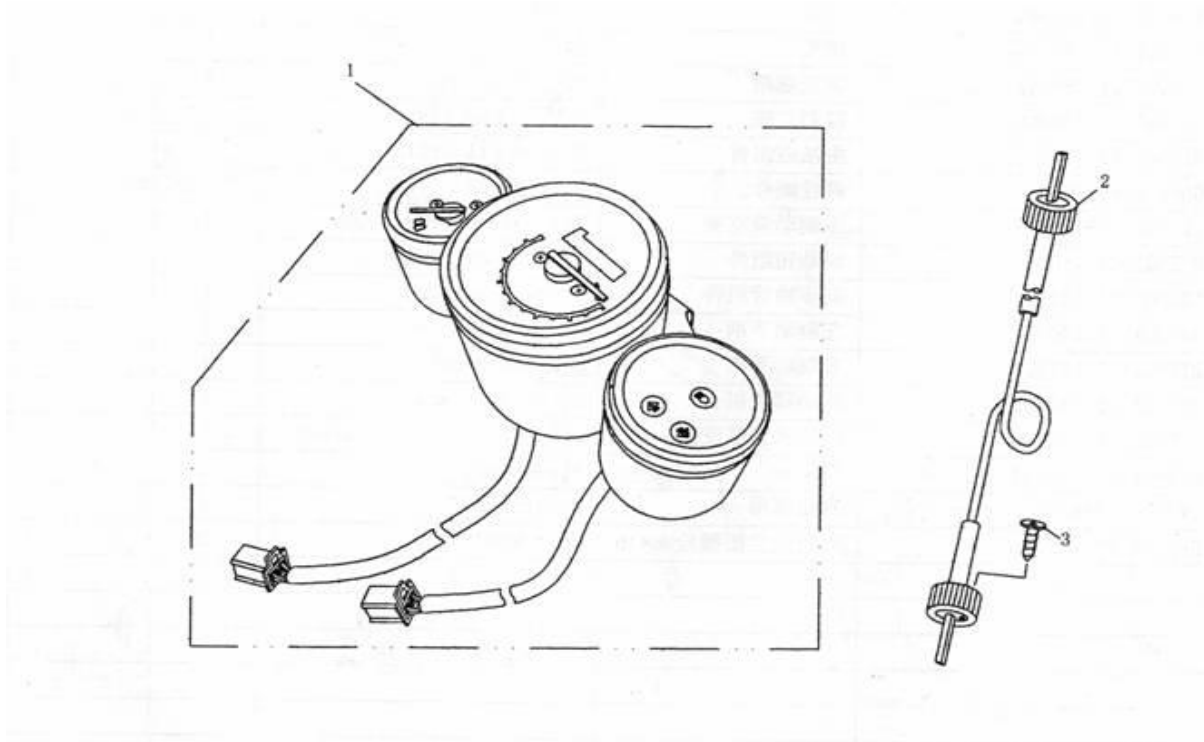
REF.NO.	PART NO.	DESCRIPTION	Q.T.Y
1	F0801	THROTTLE CABLE ASSY	1
2	F0802	HANDLE BAR	2
3	F0803	BOLT M10×1.25×45	1
4	F0804	NUT M10×1.25	1
5	F0805	SETTING SEAT ,DIRECTION HANDLE	4
6	F0806	ORNAMENT COVER,DIRECTION HANDLE	6
7	F0807	DIRECTION HANDLE SEAT	2
8	F0808	DIRECTION HANDLE BLOCK	2
9	F0809	NUT M10×1.25	2
10	F0810	BOLT M6×35	4
11	F0811	BOLT M5×16	1
12	F0812	THROTTL GRIP ASSY	1
13	F0813	LEFT GRIP	1
14	F0814	L.MIRROR COMP BACK	1
15	F0815	R.MIRROR COMP BACK	1
16	F0816	L.HANDLE SWITCH ASSY	10
17	F0817	R.HANDLE SWITCH ASSY	10
18	F0818	REAR BRAKE CABLE ASSY	10



F-08 Operating System (disk brake)

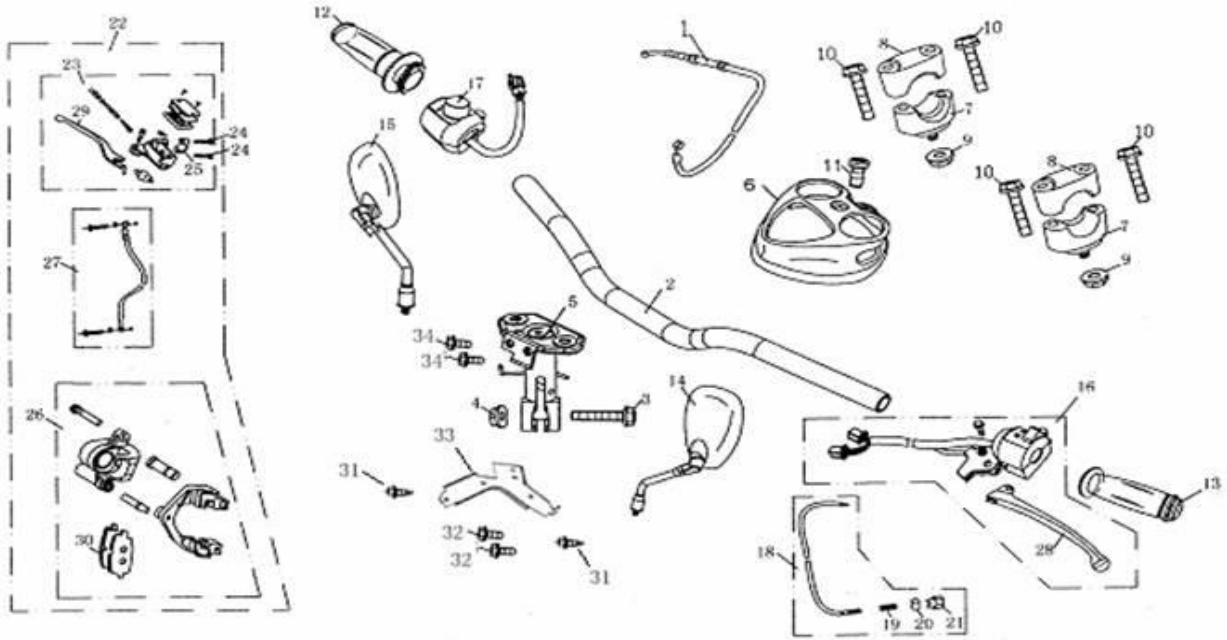
REF.NO.	PART NO.	DESCRIPTION	Q.T.Y
19	F0819	SPRING	1
20	F0820	JOINT	1
21	F0821	NUT.ADJUST	1
22	F0822	DISK BRAKE ASSY	1
23	F0823	MASTER OIL CYLINDER ASSY	5
24	F0824	BOLT M6x22	2
25	F0825	BRAKCKET,MASTER CYLINDER	1
26	F0826	BRAKE TONGS ASSY	1
27	F0827	BRAKE HOSE ASSY	1
28	F0828	L.BRAKE HANDLE	10
29	F0829	R.BRAKE HANDLE	10
30	F0830	BRAKE SHOE ASSY	10
31	F0831	SCREW,TAPPING ST3.9x12	2
32	F0832	BOLT M6x16	2
33	F0833	ERECTING FRAME	1
34	F0834	BOLT M6x12	2





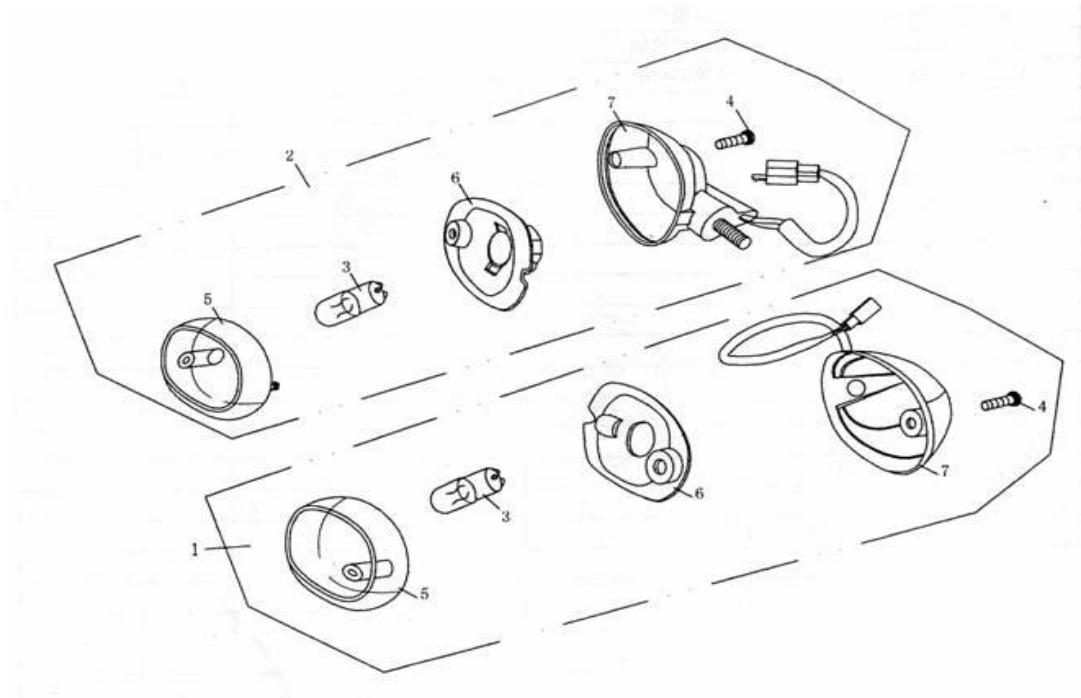
F-09 Meter Assy

REF.NO.	PART NO.	DESCRIPTION	Q.T.Y
1	F0901	METER ASSY	10
2	F0902	ODOMETER TUBE	20
3	F0903	BOLT M5×16	1



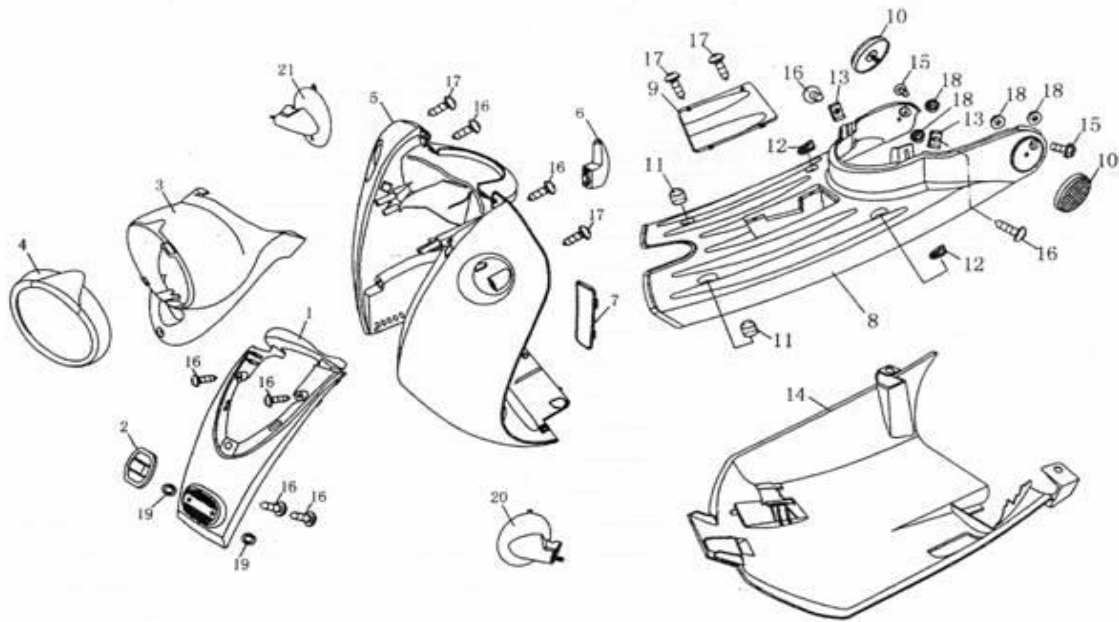
F-10 Front Winker

REF.NO.	PART NO.	DESCRIPTION	Q.T.Y
1	F1001	FR.LEFT TURN SIGNAL ASSY	3
2	F1002	FR.RIGHT TURN SIGNAL ASSY	3
3	F1003	TURN SIGNAL BULB	2
4	F1004	SCREW TAPPING ST3.9×14	2
5	F1005	LENS,FRONT WINKER	2
6	F1006	BASE FRONT WINKER	2
7	F1007	SETTING SOCKET,FRONT WINKER	2



F-11 REAR Winker /Find Lamp Assy

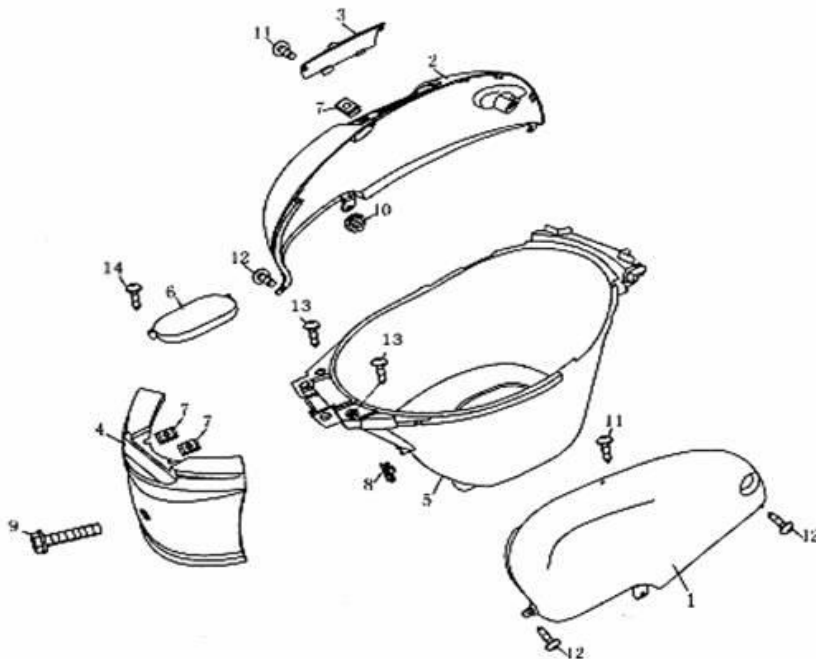
REF.NO.	PART NO.	DESCRIPTION	Q.T.Y
1	F1101	RR.LEFT TURN SIGNAL ASSY	3
2	F1102	RR.RIGHT TURN SIGNAL ASSY	3
3	F1103	TURN SIGNAL BULB	2
4	F1104	SCREW TAPPING ST3.9×14	2
5	F1105	LENS,FRONT WINKER	2
6	F1106	BASE FRONT WINKER	2



F-12Front Cover/Floor Pedal

REF.NO.	PART NO.	DESCRIPTION	Q.T.Y
1	F1201	FR.COVER	1
2	F1202	ORNAMENT , FRONT COVER	1
3	F1203	HEAD LIGHT BASE ORANGE	2
	F1203	HEAD LIGHT BASE RED	2
	F1203	HEAD LIGHT BASE BLACK	2
4	F1204	HEAD LIGHT COVER ORANGE	2
	F1204	HEAD LIGHT COVER RED	2
	F1204	HEAD LIGHT COVER BLACK	2
5	F1205	FR , GUARD BOARD ASSY. ORANGE	1
	F1205	FR , GUARD BOARD ASSY. RED	1
	F1205	FR , GUARD BOARD ASSY. BLACK	1
6	F1206	HOOK,HELMET	1
7	F1207	OBSERVE COVER	10
8	F1208	PEDAL	3
9	F1209	BATTERY BOX COVER	3
10	F1210	REFLECTOR	2
11	F1211	PEDAL RUBBER,FRONT	2
12	F1212	PEDAL RUBBER,REAR	2
13	F1213	CLIP(4.2)	2
14	F1214	BOTTOM COVER	2
15	F1215	BOLT M6×12	2
16	F1216	SCREW TAPPING ST4.2×13	8
17	F1217	SCREW TAPPING ST4.2×16	4
18	F1218	NUT M6	4

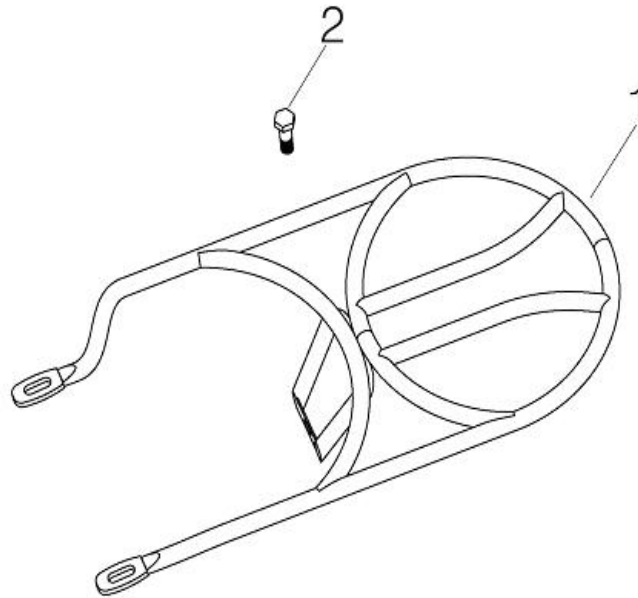
19	F1219	WASHER 5	2
20	F1220	FRONT WINKER BASE,LEFT ORANGE	5
	F1220	FRONT WINKER BASE,LEFT RED	5
	F1220	FRONT WINKER BASE,LEFT BLACK	5
21	F1221	FRONT WINKER BASE,RIGHT ORANGE	5
		FRONT WINKER BASE,RIGHT RED	5
		FRONT WINKER BASE,RIGHT BLACK	5



F-13 Body Cover/Luggage Box

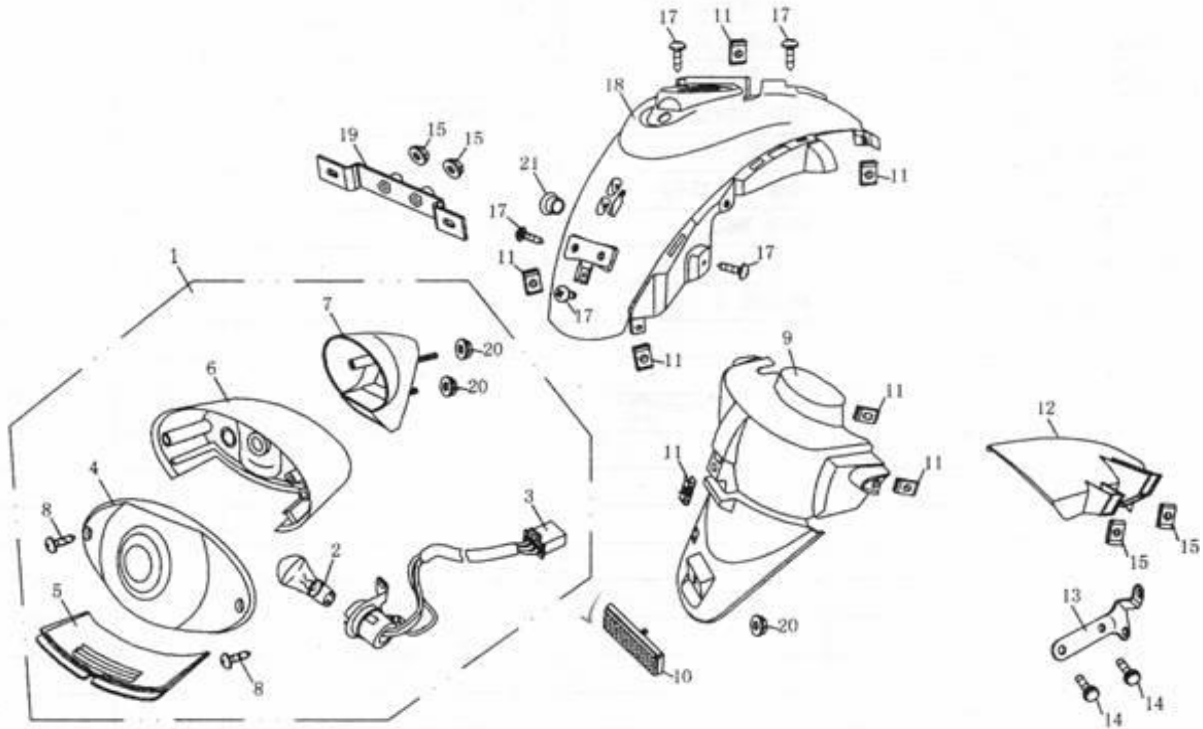
REF.NO.	PART NO.	DESCRIPTION	Q.T.Y
1	F1301	COVER ASSY.,LEFT BODY SIDE	1
2	F1302	COVER ASSY.,RIGHT BODY SIDE	1
3	F1303	SMALL COVER ,RIGHT COVER ASSY	1
4	F1304	FR.COVER,LUGGAGE BOX	1
5	F1305	LUGGAGE BOX	1
6	F1306	INNER COVER,LUGGAGE BOX	1
7	F1307	CLIP(4.2)	3
8	F1308	CLIP NUT M6	1
9	F1309	BOLT M6×70	1
10	F1310	NUT M6	2
11	F1311	SCREW TAPPING ST3.9×17	4

12	F1312	SCREW TAPPING ST4.2×20	4
13	F1313	SCREW TAPPING ST4.8×16	2
14	F1314	SCREW M5×12	1



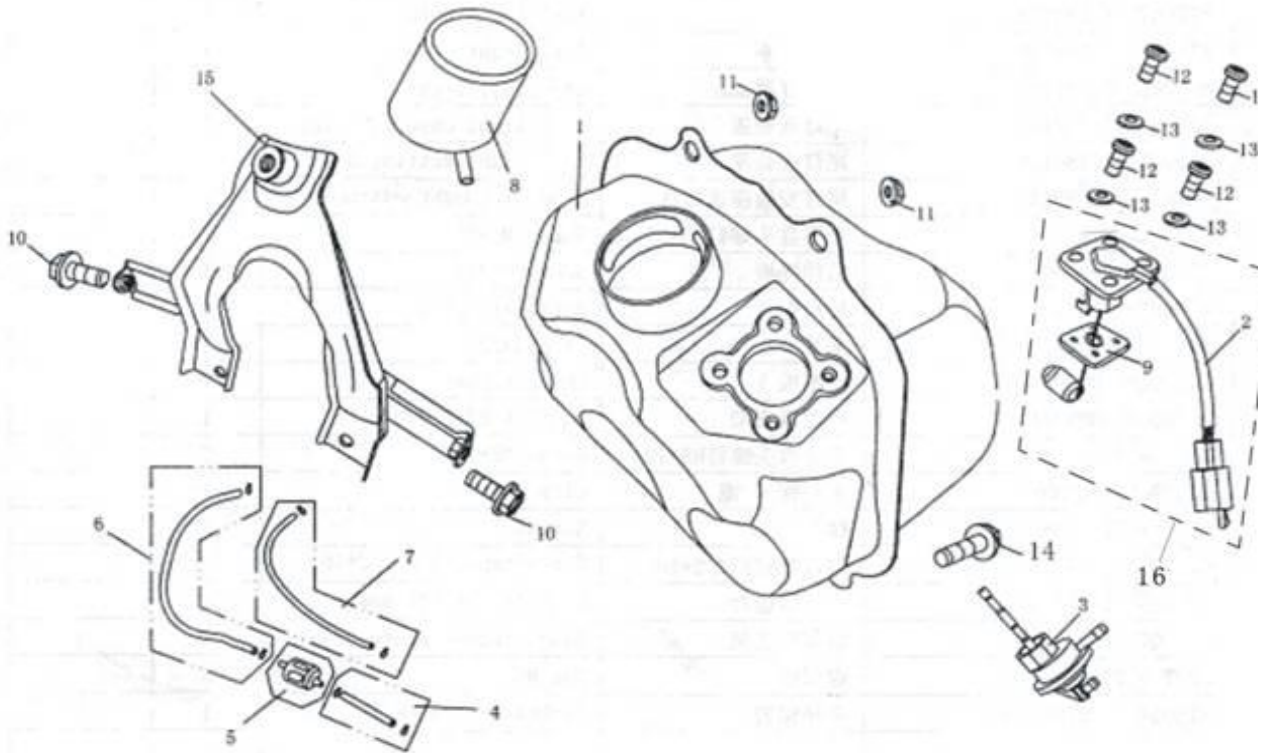
F-14 LUGGADE CARRIER

REF.NO.	PART NO.	DESCRIPTION	Q.T.Y
1	F1401	LUGGAGE CARRIER WELDING ASSY.	1
2	F1402	BLOT M8×12	1



F-15 Rear light Assy/Rear Fender Assy

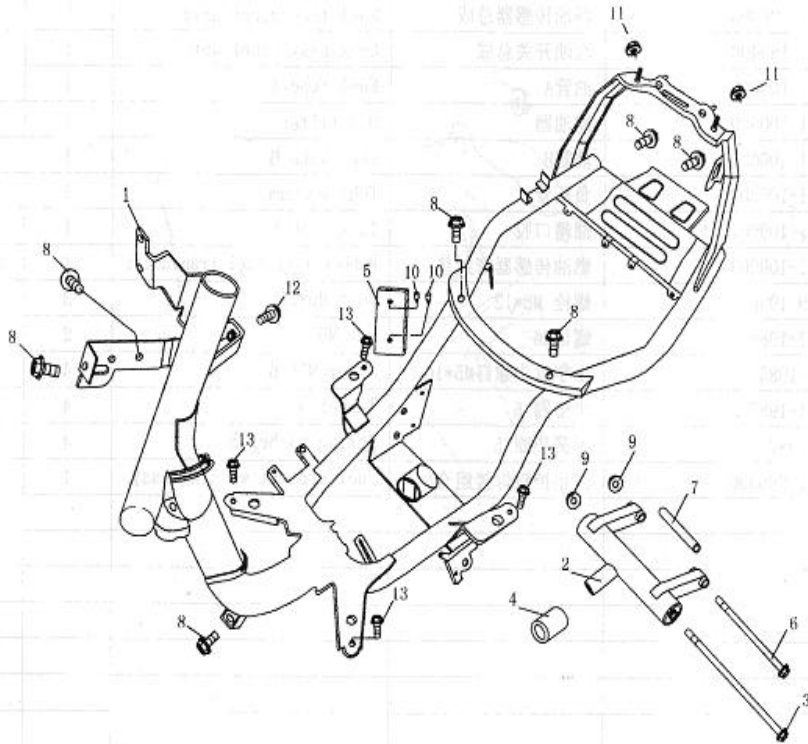
REF.NO.	PART NO.	DESCRIPTION	Q.T.Y
1	F1501	REAR LIGHT ASSY	1
2	F1502	TAIL LAMP	1
3	F1503	TURN SIGNAL LAMP	1
4	F1504	TAIL LAMP COVER	1
5	F1505	TAIL LIGHT OBSERVE COVER	1
6	F1506	TAIL LIGHT SETTING BODY	1
7	F1507	JOINT,TAIL LIGHT SETTING SOCKET	1
8	F1508	SCREW M5×20	2
9	F1509	REAR FENDER	1
10	F1510	REAR REFLECTOR	1
11	F1511	CLIP(4.2)	7
12	F1512	SMALL FENDER	1
13	F1513	SMALL FENDER FRAME	1
14	F1514	SCREW M5×12	2
15	F1515	CLIP NUT	2
16	F1516	NUT M6	2
17	F1517	SCREW TAPPING ST1.2×16	5
18	F1518	REAR TAIL COVER ASSY. ORANGE	1
	F1518	REAR TAIL COVER ASSY. RED	1
	F1518	REAR TAIL COVER ASSY. BLACK	1
19	F1519	REAR LICENSE PLATE FRAME	1
20	F1520	NUT M5	3
21	F1521	RUBBER,SEAT LOCK	1



F-16 Fuel Tank

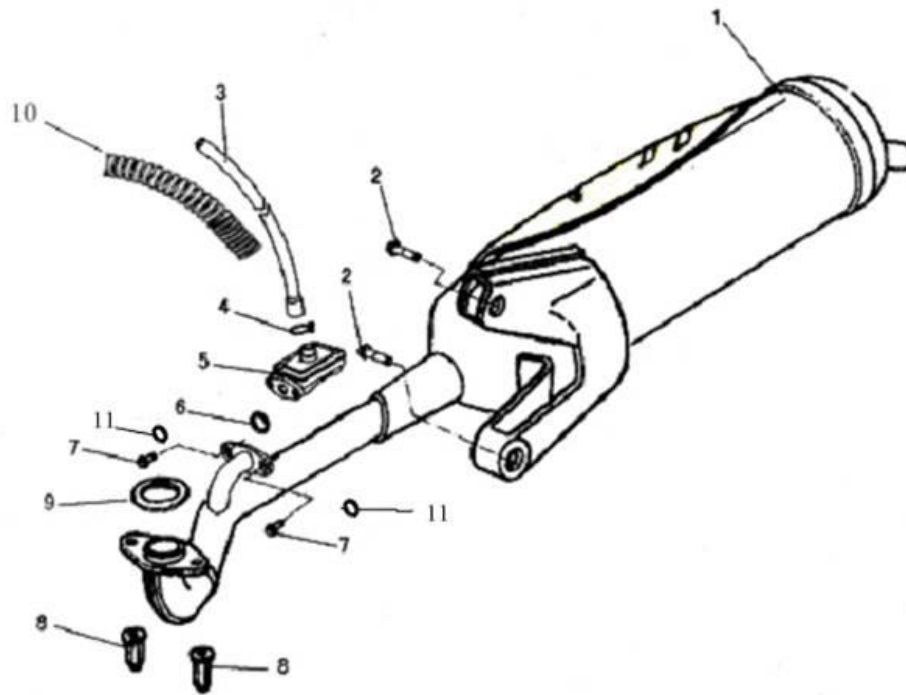
REF.NO.	PART NO.	DESCRIPTION	Q.T.Y
1	F1601	TANK WELDING ASSY	1
2	F1602	FUEL TRANSDUCER	1
3	F1603	COOK ASSY., FUEL ANTO	1
4	F1604	TUBE FUEL A	2
5	F1605	OIL FILTER	2
6	F1606	TUBE FUEL B	1
7	F1607	TUBE VJACUUM	1
8	F1608	TANK TUBBER	1
9	F1609	RUBBER-RING,FUEL TRANSDUCER	1
10	F1610	BOLT M6×12	2
11	F1611	NUT M6	2
12	F1612	SCREW M5×16	4
13	F1613	WASHER 5	4
14	F1614	BOLT M6×22	1
15	F1615	FUEL PROTECT WELDING ASSY.	1
16	F1616	FUEL SENSOR	10





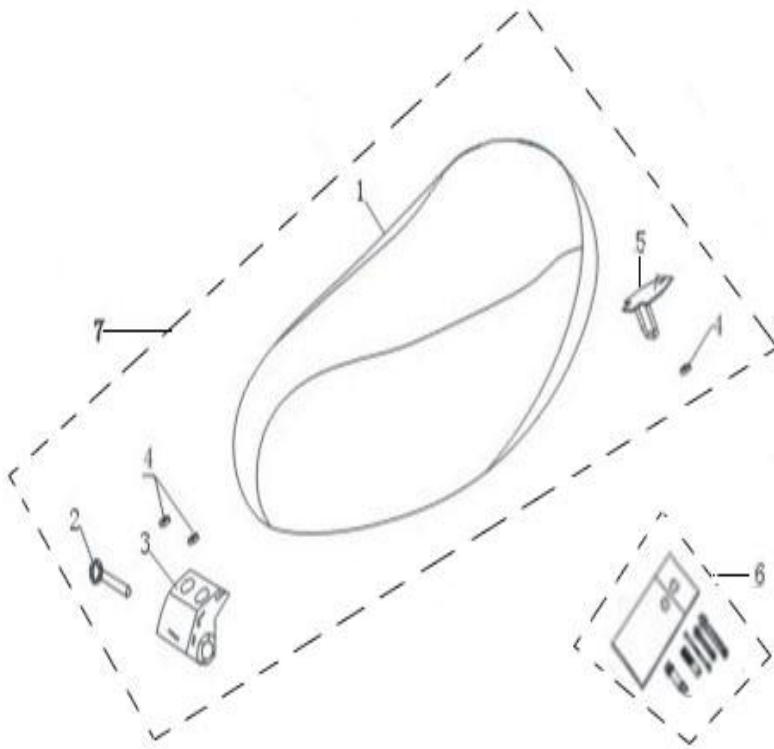
F-17 Frame Body

REF.NO.	PART NO.	DESCRIPTION	Q.T.Y
1	F1701	FRAME BODY WELDING ASSY	1
2	F1702	HANGER COMP.,ENGINE	5
3	F1703	SHAFT,HANGER AOMP.	1
4	F1704	RUBBER,HANGER AOMP.	1
5	F1705	NAMEPLATE,FRAME	1
6	F1706	SHAFT,ENGINE ASSEMBLING	1
7	F1707	MIDDLE SPACER	1
8	F1708	BOLT M6×12	7
9	F1709	NUT M10×1.25	2
10	F1710	RIVET $\phi$ 3.2	2
11	F1711	NUT M6	2
12	F1712	BOLT M6×25	1
13	F1713	BOLT M6×16	4



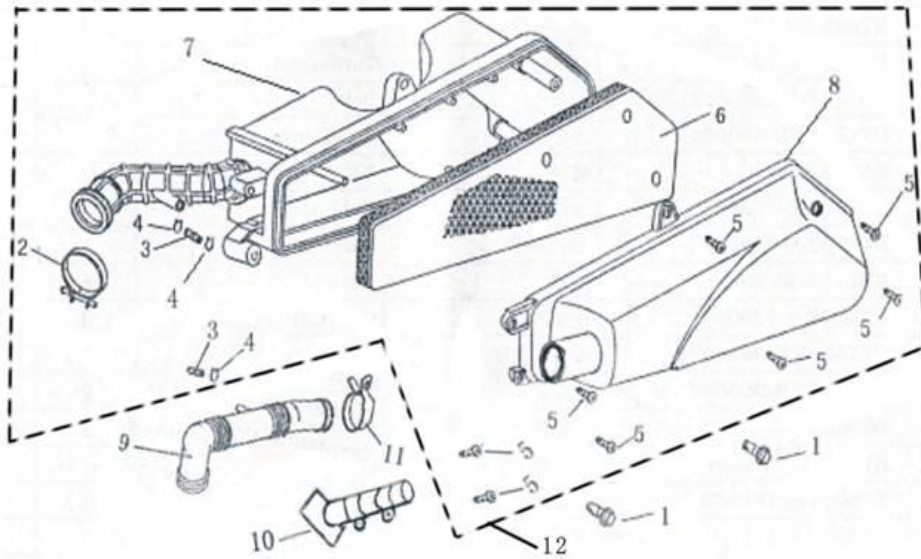
F-18Exhaust Muffler

REF.NO.	PART NO.	DESCRIPTION	Q.T.Y
1	F1801	MUFFLER WELDING ASSY	1
2	F1802	BOLT M8×35	2
3	F1803	2 <sup>ND</sup> INLET PIPE	1
4	F1804	HOOP	1
5	F1805	2 <sup>ND</sup> INLET VALVE	1
6	F1806	WASHER PLAIN	1
7	F1807	BOLT M6×12	2
8	F1808	SCREW M6	2
9	F1809	SEAL washer	1
10	F1810	SPRING	1
11	F1811	Gasket spring	2



F-19 Seat

REF.NO.	PART NO.	DESCRIPTION	Q.T.Y
1	F1901	SEAT ASSY	2
2	F1902	SHAFT	1
3	F1903	SEAT SETTING BRACKET	1
4	F1904	NUT M6	3
5	F1905	LOCK BUTTON,SEAT	1
6	F1906	TOOL SET	1
7	F1907	SEATS	1



F-20Air Cleaner

REF.NO.	PART NO.	DESCRIPTION	Q.T.Y
1	F2001	BOLT M6×30	2
2	F2002	CLIP,TUBE	2
3	F2003	TUBE	2
4	F2004	CLIP,TUBE(A)	3
5	F2005	SCREW ST4.2X19	8
6	F2006	AIR FILTER	1
7	F2007	BODY AIR FILTER	1
8	F2008	COVER OIL INLET	1
9	F2009	INLET TUBE	1
10	F2010	VENTILATION PIPE	1
11	F2011	CLIP	1
12	F2012	AIR CLEANER	1





































































11/15/2011 10:41:11 AM









