

**ADAMOTO ROME 125CC SPARE PARTS CATALOGUE**



图1 头罩前部前照灯总成 Hood front headlight assembly

序号 REF.	代码 CODE	NAME	数量quantity	单位 UNIT(piece)
1	QT-16-01-02	left rearview mirror	1	pc
2	QT-16-01-05	right rearview mirror	1	pc
3	QT-16-01-06W	hood front	1	pc
4	QT-16-01-07	self tapping screw	7	pc
5	QT-16-01-08	headlight assembly	1	pc

2  
2  
2

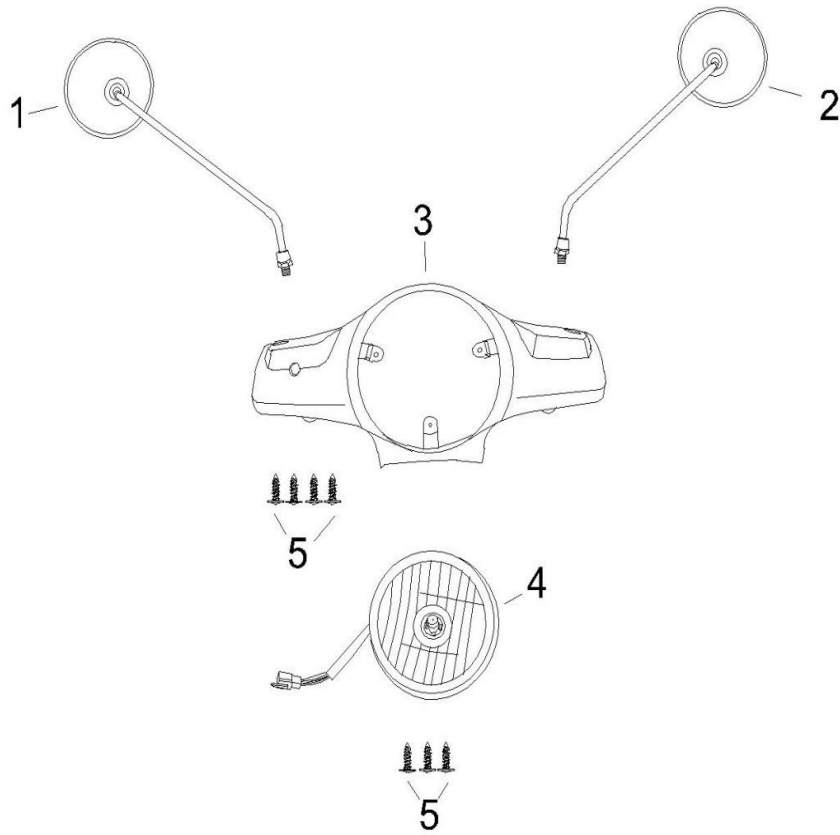


图2 头罩后部及仪表总成 Back and instrument hood assembly

序号 REF.	代码 CODE	NAME	数量quantity	单位UNIT(piece)
1	QT-16-02-01W	hood rear, pearl white	1	pc
2	QT-16-02-02	Cross recessed small pan head screws	1	pc
3	QT-16-02-03	card	2	pc
4	QT-16-02-04	self tapping screw	2	pc
5	QT-16-02-05	Dimmer switch	1	pc
6	QT-16-02-06	turn signal swich	1	pc
7	QT-16-02-07	Electric horn switch	1	pc
8	QT-16-02-08	Headlight switch(normal)	1	pc
9	QT-16-02-09	Electric starter switch	1	pc
10	125T-2-02-10	Panel assembly	1	pc
11	QT-16-02-11	self tapping screw	4	pc
12	125T-2-02-12	subfeeder cable/125CC	1	pc

2

2

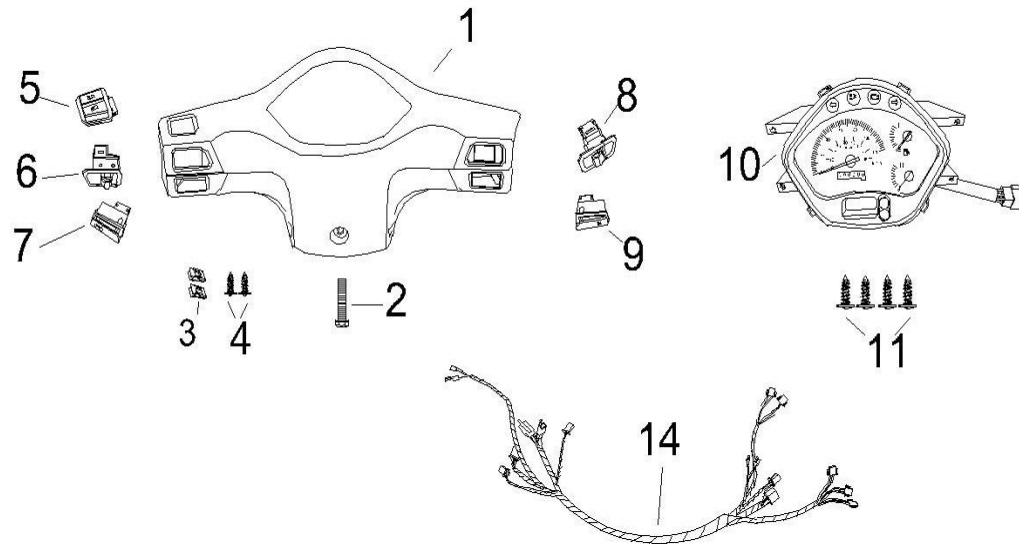


图3 方向把焊接组合及拉索 Composition and direction of the welding cable

序号 REF.	代码 CODE	NAME	数量quantity	单位UNIT(piece)
1	QT-16-03-01	left hand set	1	pc
2	QT-16-03-02	Combination of the direction of the welding	1	pc
3	QT-16-03-03	Throttle holder	1	pc
4	QT-16-03-07	Turn the throttle	1	pc
5	QT-16-03-08	Hex Flange Screws	1	pc
6	QT-16-03-09	Flat washer	1	pc
7	QT-16-03-10	The direction of the sleeve	1	pc
8	QT-16-03-20	Instrument flexible shaft	1	pc
9	QT-16-03-22	Throttle cable	1	pc

2

2

2

2

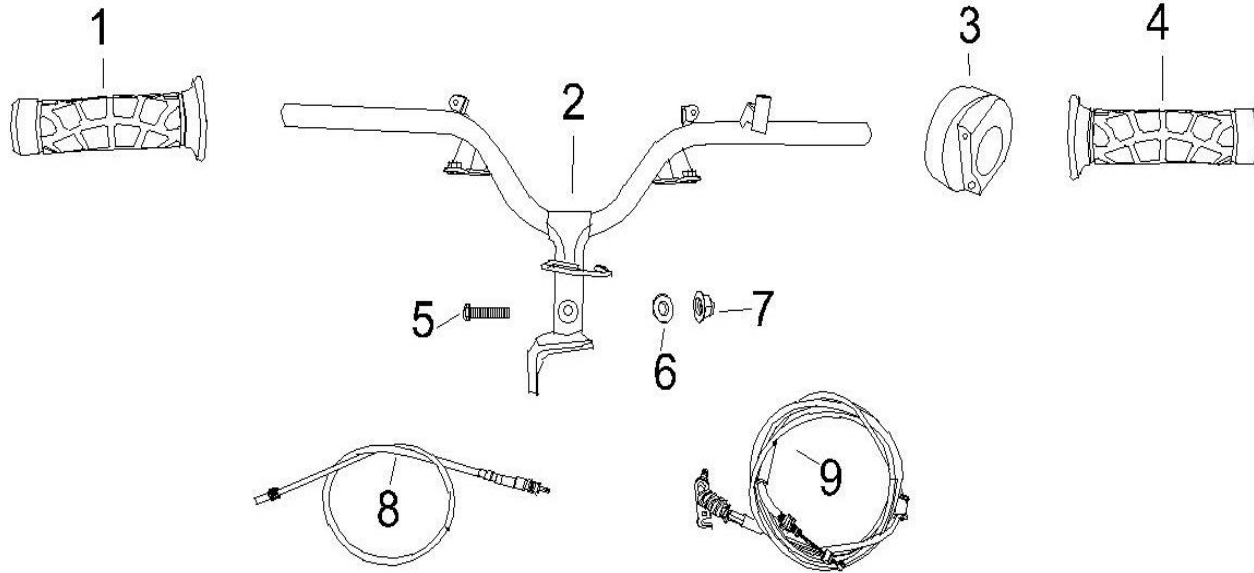


图4 前大板及前围 Before the big board and former Circuit

序号 REF.	代码 CODE	NAME	数量quantity	单位UNIT(piece)
1	QT-16-04-01W	Front board	1	pc
2	QT-16-04-02	Front left turn light assembly	1	pc
3	QT-16-04-03	Front right turn light assembly	1	pc
4	QT-16-04-04	self-tapping screw	14	pc
5	QT-16-04-07W	front wall	1	pc
6	QT-16-04-08	card	2	pc

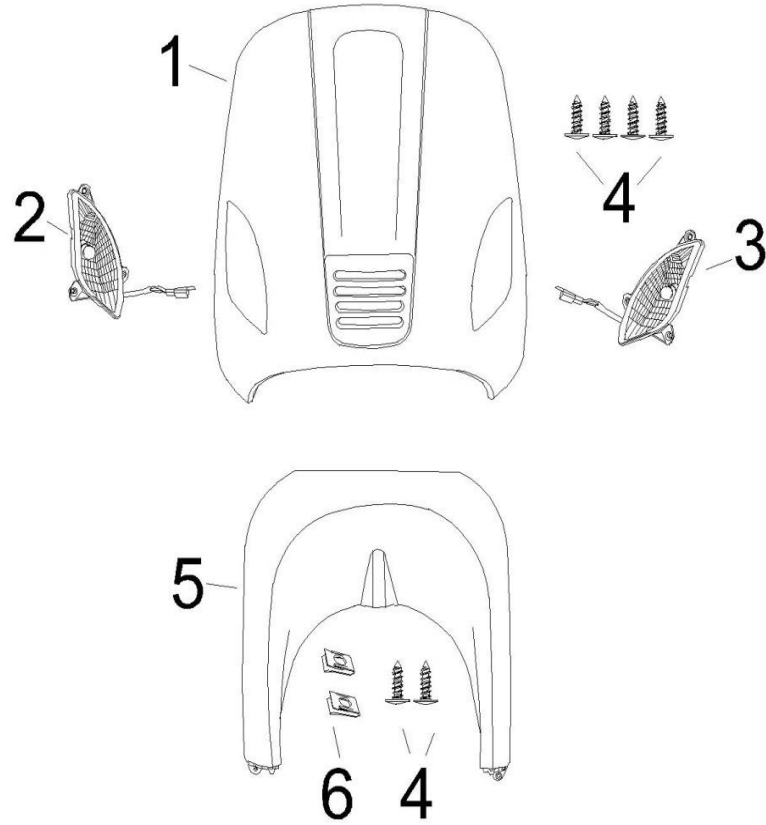
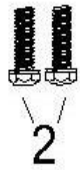
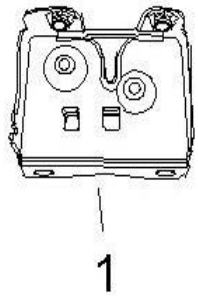


图5 前综合安装支架及套锁部分 Pre-installed part stents and lock sets

序号 REF.	代码 CODE	NAME	数量quantity	单位UNIT(piece)
1	QT-16-05-01	Lock seat cushion	1	pc
2	QT-16-05-02	Hex Flange Screws	2	pc
3	QT-16-05-03	Cross recessed countersunk head bolts	1	pc
4	QT-16-05-04	Lock assembly	2	pc
5	QT-16-05-05	Ignition switch lock cover	1	pc
6	QT-16-05-06	Ignition switch lock	1	pc
7	QT-16-05-07	Spring seat lock card	2	pc
8	QT-16-05-09	Seat Lock	1	pc
9	QT-16-05-10	Glove box lock	1	pc
10	QT-16-05-11	key	1	pc

2



4

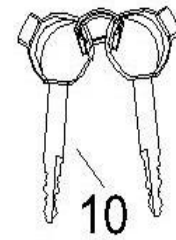
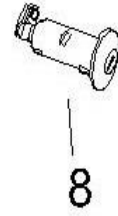
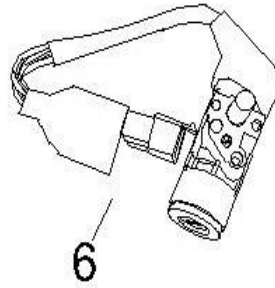


图6 座垫及行李箱、前置物箱 Seat and trunk, front locker

序号 REF.	代码 CODE	NAME	数量quantity	单位UNIT (piece)
1	QT-16-06-01	Seat assembly	1	pc
2	QT-16-06-02	Sewing Cover	1	pc
3	QT-16-06-03	Tapping Screws	12	pc
4	QT-16-06-04	Seat lock cover	1	pc
5	QT-16-06-05	Seat lock briquette	2	pc
6	QT-16-06-06	Seat lock hook	1	pc
7	QT-16-06-07	Spring seat lock button hook	1	pc
8	QT-16-06-08	Cable saddle	1	pc
9	QT-16-06-09	Seat hinge	1	pc
10	QT-16-06-10	Pin Cushion	1	pc
11	QT-16-06-11	Hexagon nuts with flange	1	pc
12	QT-16-06-12	boot trunk	1	pc
13	QT-16-06-13	Hex Flange Screws	2	pc
14	QT-16-06-14	Hex Flange Screws	2	pc
15	QT-16-06-15	flat gasket	4	pc

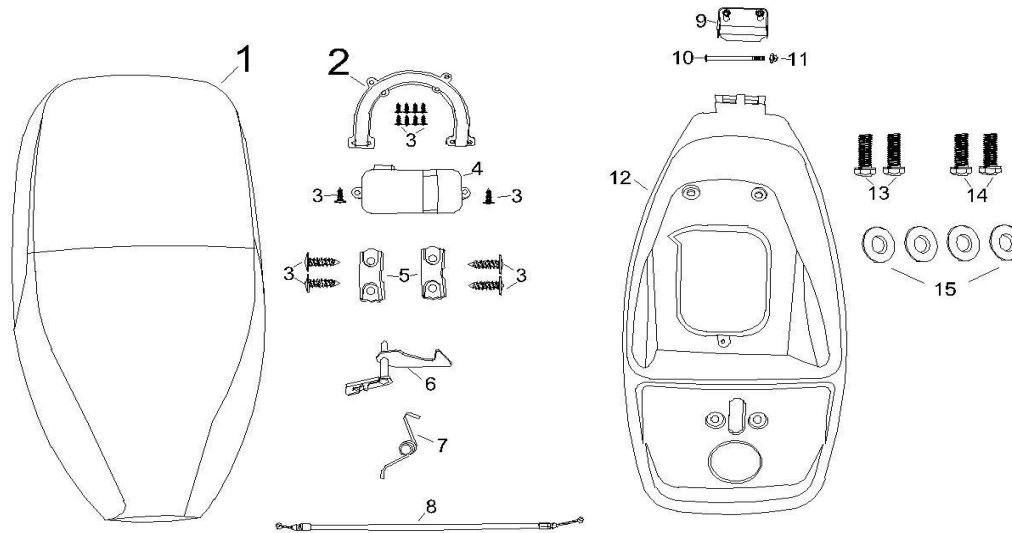


图7 车架挡泥板及脚踏板 Fender and foot board frame

序号 REF.	代码 CODE	NAME	数量quantity	单位UNIT(piece)
1	QT-16-07-01W	storage space	1	pc
2	QT-16-07-02	helmet pothook	1	pc
3	QT-16-07-03	Hex Flange Screws	1	pc
4	QT-16-07-04	No. cover frame	1	pc
5	QT-16-07-05	Tapping Screws	5	pc
6	QT-16-07-06	card	4	pc
7	QT-16-07-07W	Glove compartment lid	1	pc
8	QT-16-07-08	Compartment plate	2	pc
9	QT-16-07-09	self-tapping screw	4	pc
10	QT-16-07-10W	steering wheel cover	1	pc
11	QT-16-07-11W	foot plate	1	pc
12	QT-16-07-12	flat gasket	8	pc
13	QT-16-07-13	Hex Flange Screws	4	pc
14	QT-16-07-14W	storage battery cover	1	pc
15	QT-16-07-15	storage battery	1	pc
16	QT-16-07-16	Frame Fender	1	pc
17	QT-16-07-17	Hex Flange Screws	4	pc
18	QT-16-07-18		2	pc
19	QT-16-07-19		4	pc



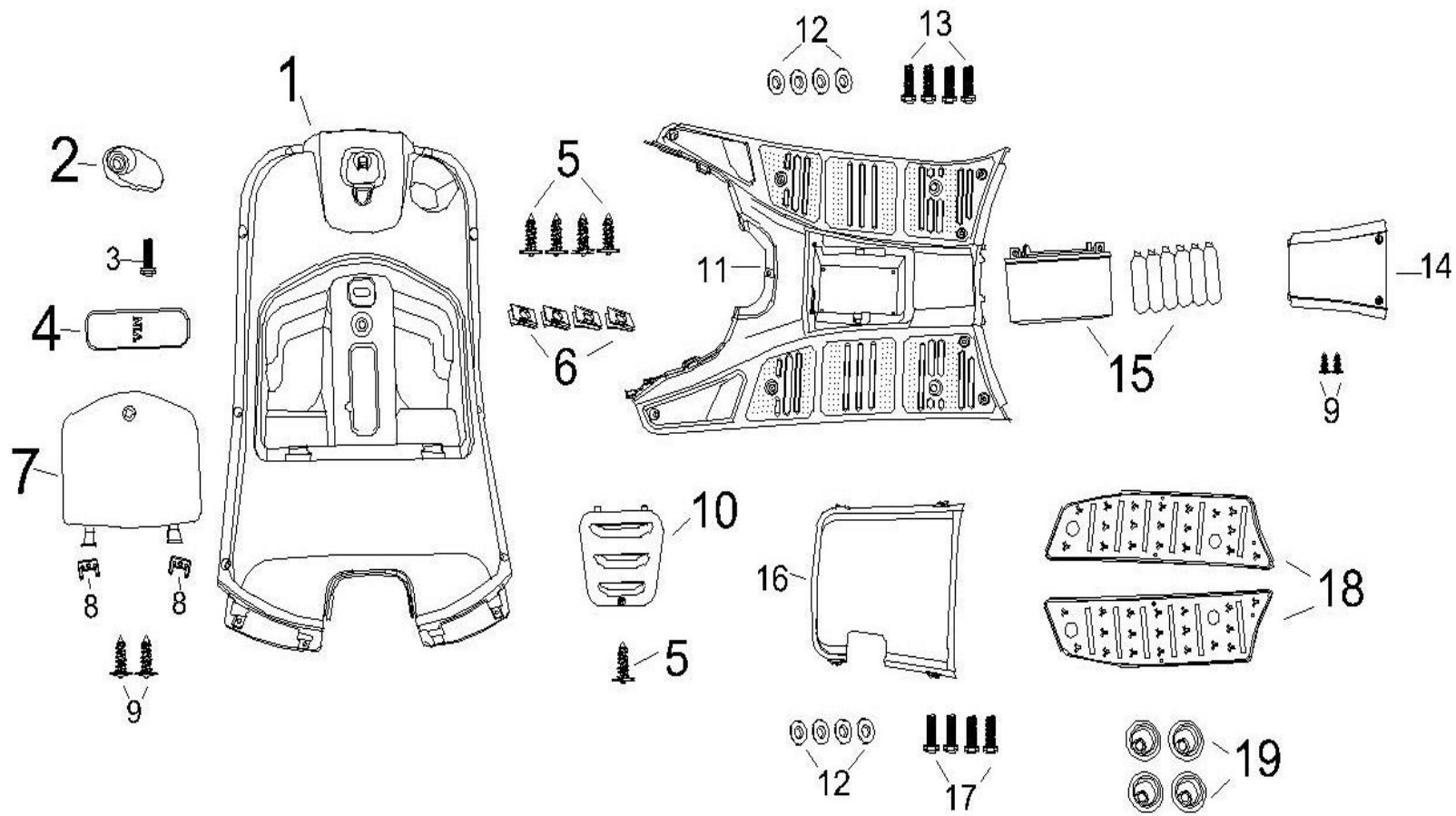


图8 装饰板部分 Some decorative plates

序号 REF.	代码 CODE	NAME	数量quantity	单位UNIT(piece)
1	QT-16-08-01W	Left decorative plate	1	pc
2	QT-16-08-02W	right decorative plate	1	pc
3	QT-16-08-03	self tapping screw	13	pc
4	QT-16-08-04	card	13	pc
5	QT-16-08-05	After the left turn signal assembly	1	pc
6	QT-16-08-06	After the right turn signal assembly	1	pc
7	QT-16-08-07	self tapping screw	19	pc
8	QT-16-08-08W	Section on the left after	1	pc
9	QT-16-08-09W	Section on the right after	1	pc
10	QT-16-08-10W	left side cover 125cc	1	pc
11	QT-16-08-11W	right side cover 125cc	1	pc
12	QT-16-08-12	Rear light	1	pc

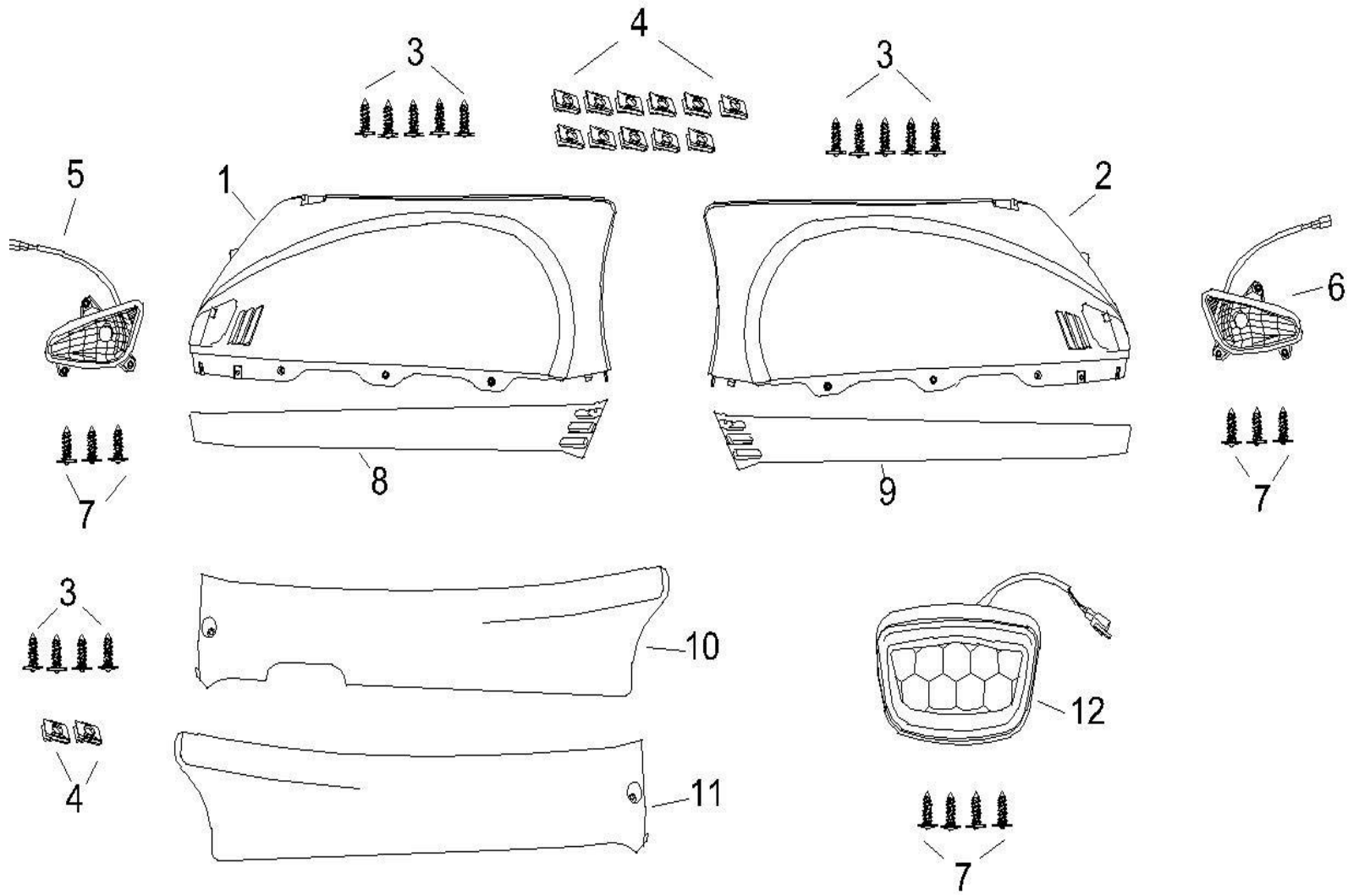


图9 后尾架部分及后挡泥板 Frame part of the tail and Rear fender

序号 REF.	代码 CODE	NAME	数量quantity	单位UNIT(piece)
1	QT-16-09-01W	rear fender	1	pc
2	QT-16-09-02	self tapping screw	4	pc
3	QT-16-09-03	self tapping screw	2	pc
4	QT-16-09-04	After Care section	1	pc
5	QT-16-09-05	Rear lamps assembly	1	pc
6	QT-16-09-08	After the license lamp lamp shell	1	pc
7	QT-16-09-09	After the reflector	1	pc
8	QT-16-09-10	Hexagon nuts with flange	3	pc
9	QT-16-09-11	After the license bracket	1	pc
10	QT-16-09-12	Side reflector	1	set
11	QT-16-09-13AC	Rear carrier, fold type, chorme	1	pc
11	QT-16-09-13AB	Rear carrier, fold type, chorme	1	pc
11	QT-16-09-13BC	Rear carrier, for rear box type, chorme	1	pc
11	QT-16-09-13BB	Rear carrier, for rear box type, black	1	pc
12	QT-16-09-14	Hexagon flange bolts	2	pc
13	QT-16-09-15	Hexagon flange bolts	2	pc
14	QT-16-09-16	After the last frame rubber	4	pc

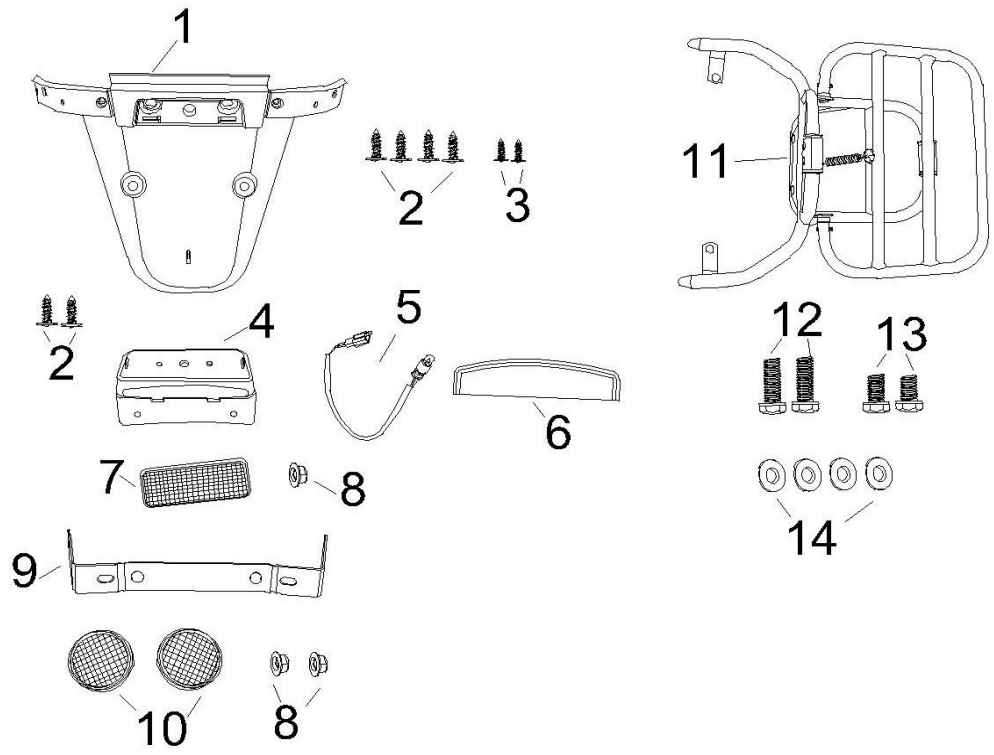


图10 燃油箱焊接组合 Combination of fuel tank welding

序号 REF.	代码 CODE	NAME	数量quantity	单位UNIT(piece)
1		FULE TANK	1	pc
2		fuel tank cap	1	pc
3		Hexagon flange bolts	4	pc
4			1	pc
5			1	pc
6			6	pc
7		COMMON FUEL TUBE	3	pc
8		DUMP VALVE	1	pc
9		CLAMP $\phi$ 10	3	pc
10		CLAMP $\phi$ 8.3	1	pc
11		CARBON CANISTER SOLENOID VALVE	1	pc
12		COMMON FUEL TUBE	1	pc
13		CARBON CANISTER OX-TGM-2 OXIN	1	pc
14		CLAMP $\phi$ 8.3	4	pc
15		THROTTLE VALVE ASSY	1	pc
16		HIGH VOLTAGE FUEL TUBE	1	pc
17		DEDICATED CATHODIC JOINT FOR FUEL TUBE	2	pc
18		CLAMP FOR HIGH VOLTAGE FUEL TUBE	2	pc

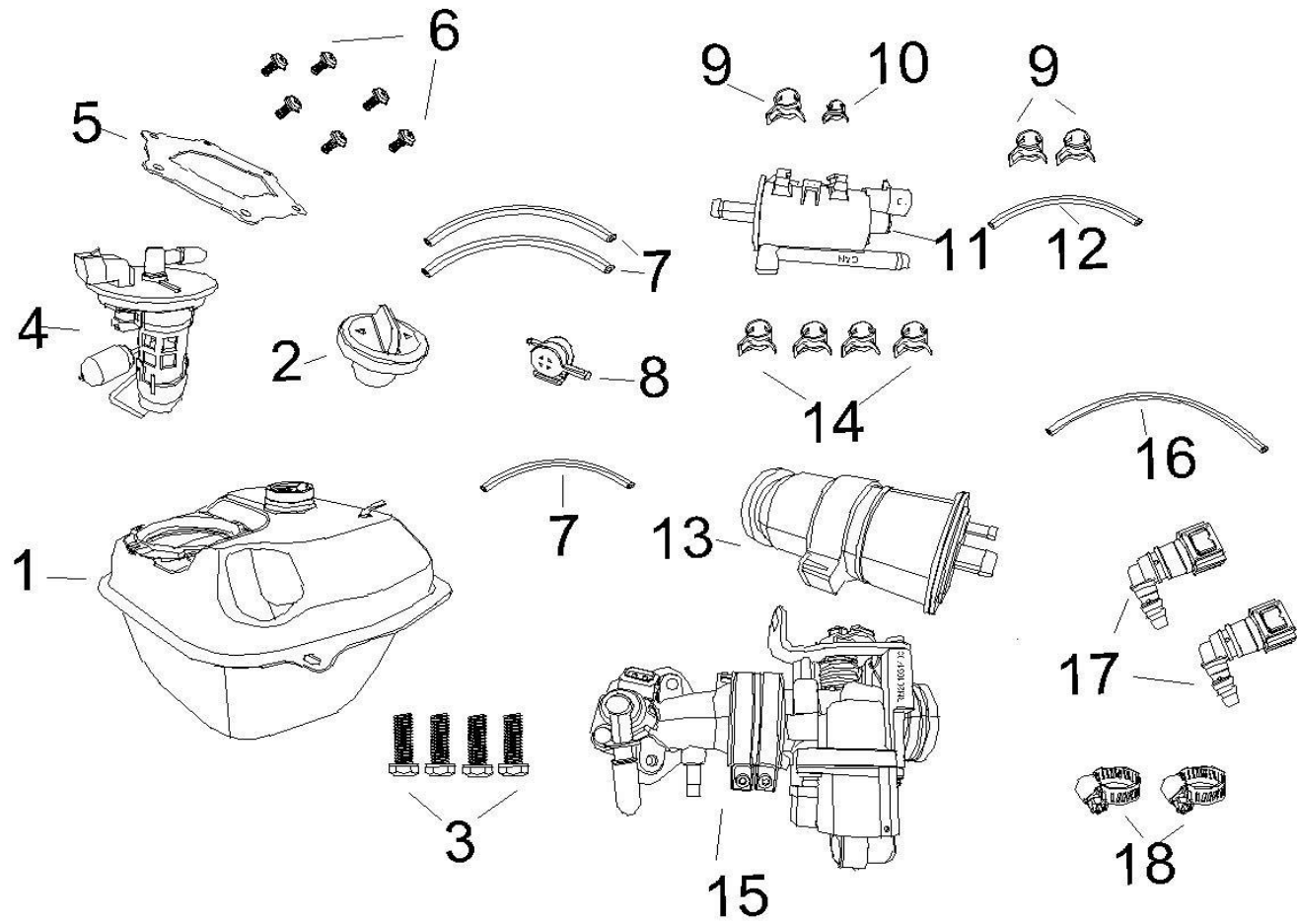


图11 主电缆及电器件 The main cable and electrical parts

序号 REF.	代码 CODE	NAME	数量quantity	单位UNIT(piece)
1	125T-2-11-01	main cable	1	set
2	QT-16-11-02	Electric horn	1	pc
3	QT-16-11-03	Hex Flange Screws	3	pc
4	QT-16-11-06	electric relay	1	pc
5	QT-16-11-07	Regulators (18 pole DC)	1	pc
6		IGNITION COIL COMP.	2	pc
7	QT-16-11-11	flash apparatus	1	pc
8		EFI DEDICATED RELAY	2	pc
9		Headlight controller	1	pc

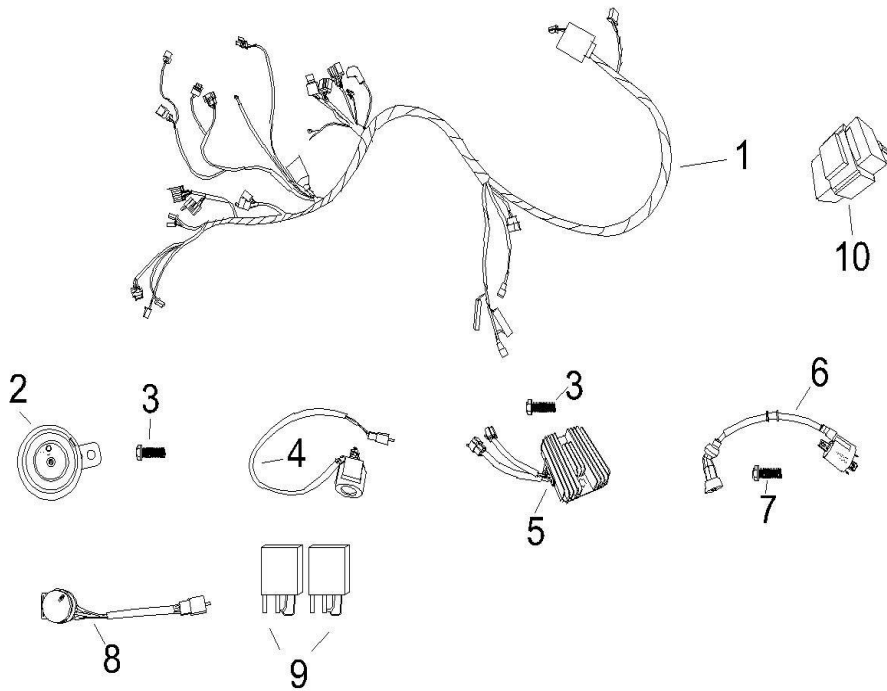




图12 方向柱及前减震 The direction of column and pre-shock

序号 REF.	代码 CODE	NAME	数量quantity	单位UNIT(piece)
1	QT-16-12-01	Full steel bowl	1	套
2	QT-16-12-02	Orientation column nut	1	pc
3	QT-16-12-03	Column bearing on the direction of plate	1	pc
4	QT-16-12-04	Column direction of ball assembly	1	pc
5	QT-16-12-05	Under the direction column bearing plate	1	pc
6	QT-16-12-06	Bearing on the plate under the direction of column	1	pc
7	QT-16-12-07	Ball assembly under the direction of column	1	pc
8	QT-16-12-08	Under the bearing plate under the direction of column	1	pc
9	QT-16-12-09	Combination of column welding direction	1	pc
10	QT-16-12-10	Hex Flange Screws	1	pc
11	QT-16-12-11	spring washer	6	pc
12	QT-16-12-12	Front left shock absorber assembly	1	pc
13	QT-16-12-13	Front right shock absorber assembly	1	pc
14	QT-16-12-14	Cross Recess Head Screw	3	pc
15	QT-16-12-15W	Front fender, peral white	1	pc
15	QT-16-12-15B	Front fender, black	1	pc
16	QT-16-12-16	Hydraulic tube clamp solid support before	1	pc
17	QT-16-12-17	Before the hydraulic tube solid clamp	2	set
18	QT-16-12-18	Cross Recess Head Screw	2	pc
19	QT-16-12-19	rubber washer	2	pc
20	QT-16-12-20	flat gasket	4	pc
21	QT-16-12-21	knuckle spindle	1	pc
22	QT-16-12-22	bushing block	1	pc
23	QT-16-12-23	All-metal hexagon nuts with flange	1	pc
24			1	pc

2

4

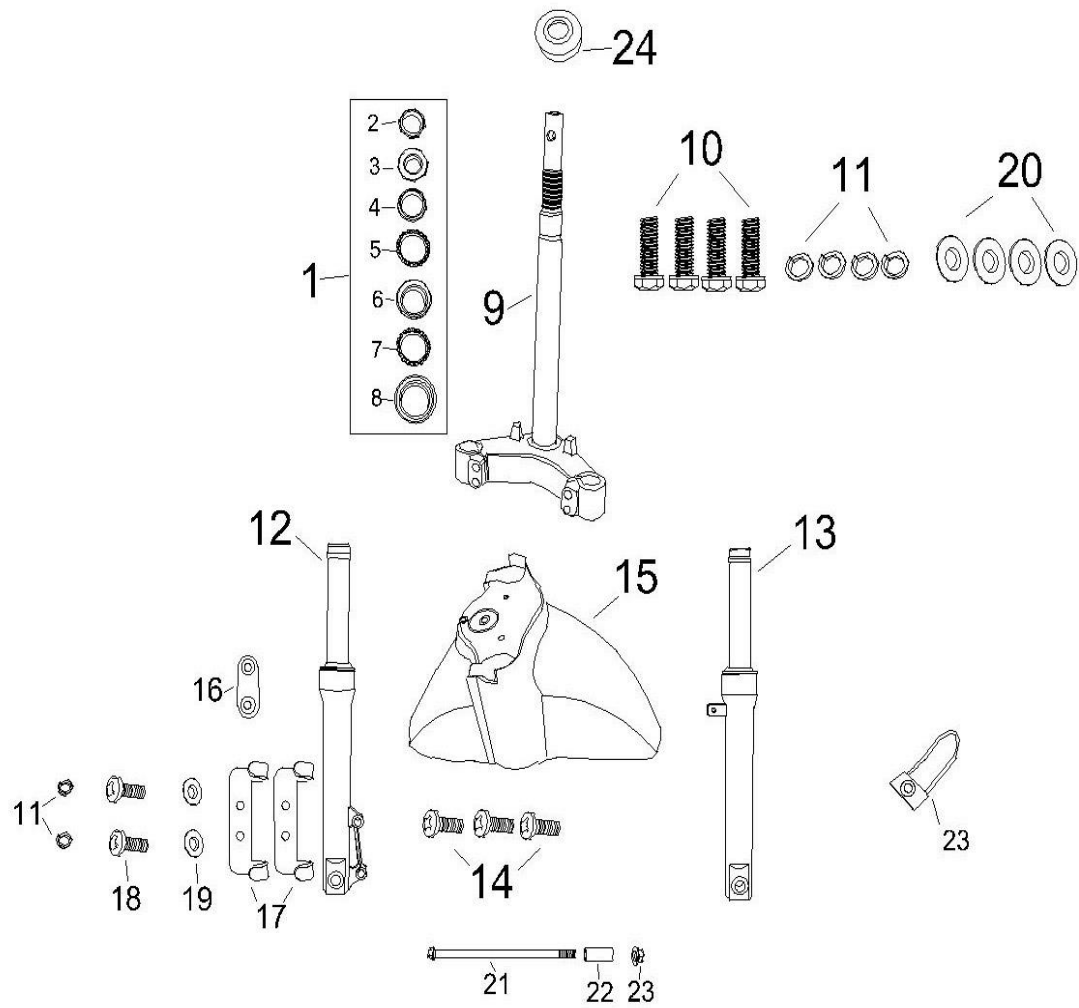


图13 前轮部分及前液压制动器总成 Hydraulic brake parts and front wheel assembly

序号 REF.	代码 CODE	NAME	数量quantity	单位UNIT (piece)
1	QT-16-13-04	tyre, CST	1	pc
2	QT-16-13-02	Aluminum wheel hub	1	pc
3	QT-16-13-03	inflating valve	1	pc
4	QT-16-13-09	Disc tray	1	pc
5	QT-16-13-10	Disc brake disc mounting bolts	3	pc
6	QT-16-13-11	Speedometer gear	1	pc

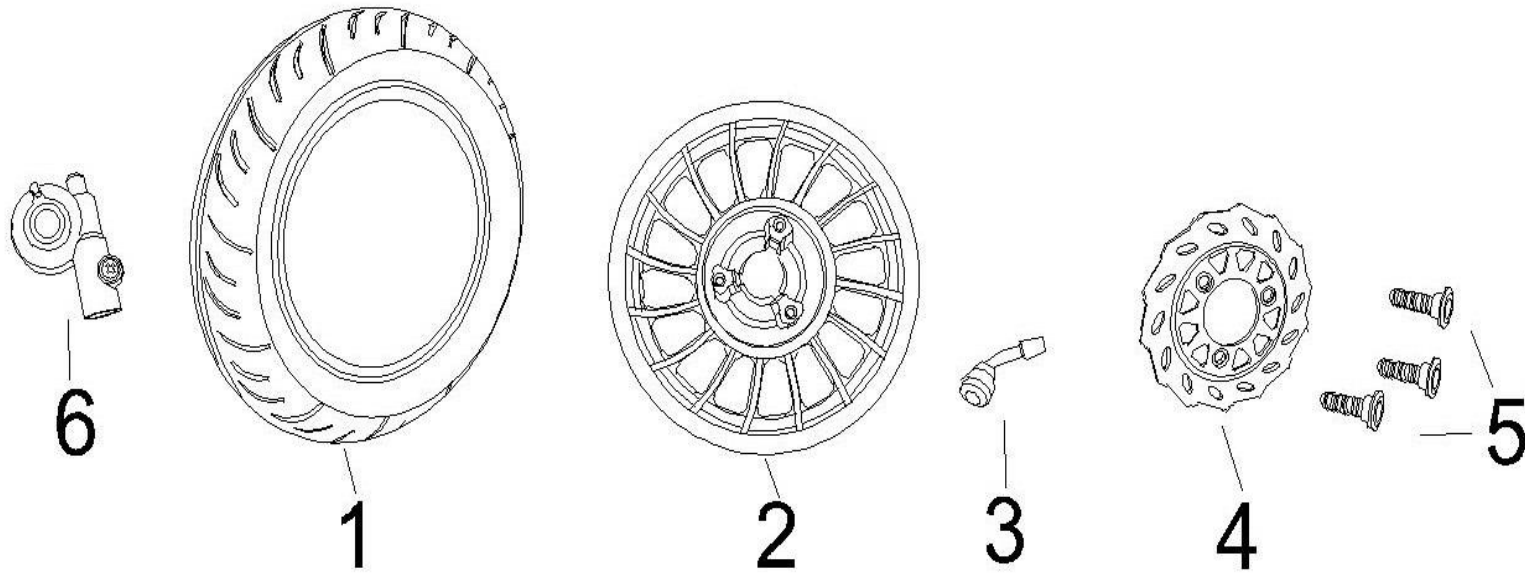


图14前液压制动器

序号 REF.	代码 CODE	NAME	数量quantity	单位UNIT (piece)
1		BRAKE LEVER, L	1	pc
2		DISC BRAKE PUMP,RR,UPPER	1	pc
3		HEX FLANGE SCREW M6*30	2	pc
4		SELF-LOCKING NUT	2	pc
5		BRAKE SWITCH	2	pc
6		BRAKE SWITCH CABLE	2	pc
7		HOLLOW SCREW M10*35	1	pc
8		GASKET SEAL	11	pc
9		BRAKE LEVER, R	1	pc
10		DISC BRAKE PUMP,FR,UPPER	1	pc
11		HOLLOW SCREW M10*20	2	pc
12		HIGH-PRESURE TUBE 2	1	pc
13		HIGH-PRESURE TUBE 3	1	pc
14		HIGH-PRESURE TUBE 1	1	pc
15		DISC BRAKE PUMP,RR,DOWN	1	pc
16		DISC BRAKE PUMP BRACKET,RR	1	pc
17		BRAKE PAD, R	1	set
18		DISC BRAKE PUMP,FR,DOWN	1	pc
19		DISC BRAKE PUMP BRACKET,FR	1	pc
20		BRAKE PAD, F	1	set

后联动碟刹泵

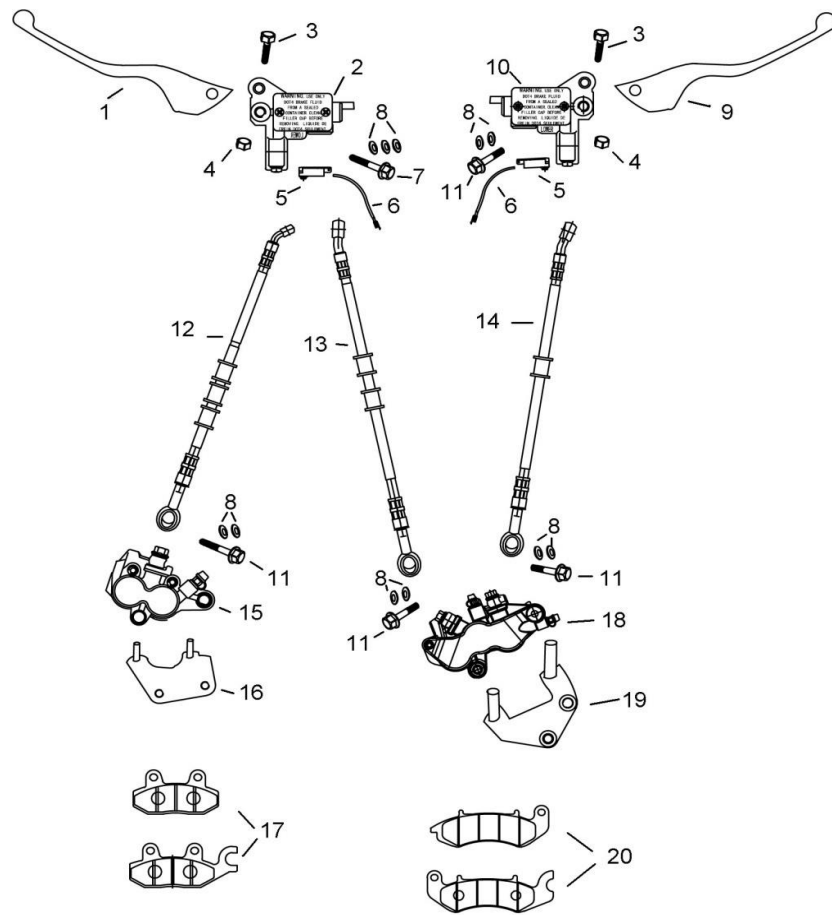


图15 后轮部分及后减震 And after some rear shock absorber

序号 REF.	代码 CODE	NAME	数量quantity	单位UNIT(piece)
1	QT-16-15-04	tyre	1	pc
2	QT-16-15-02	Aluminum rear wheel hub	1	pc
3	QT-16-15-03	valve cock	1	pc
4		Disc tray	1	pc
5		Disc brake disc mounting bolts	3	pc
6	125T-2-15-05	Muffler mounting plate	1	pc
7	125T-2-15-07	Long sleeve	1	pc
8	QT-16-15-08	Short sleeve	1	pc
9	125T-2-15-09	After the shock absorber assembly,double	2	pc
10	QT-16-15-10	Hex Flange Screws	4	pc
11	QT-16-15-11	spring washer	1	pc
12	QT-16-15-12	flat gasket	1	pc
13			1	pc
14			1	pc
15			1	pc

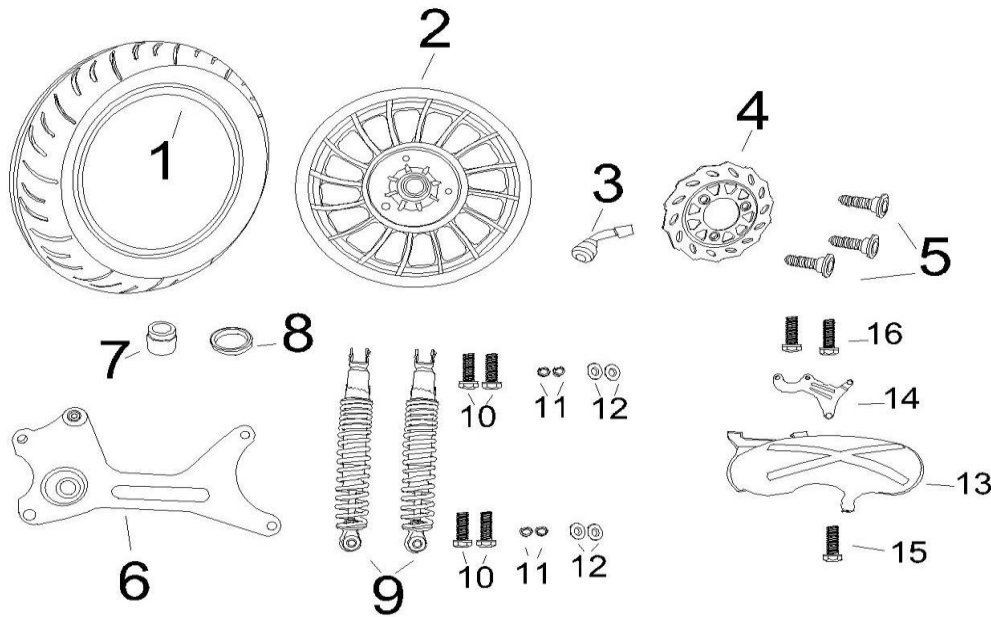


图16 空滤气 Air filter gas

序号 REF.	代码 CODE	NAME	数量quantity	单位UNIT(piece)
1	125T-2-16-01	air cleaner/125CC	1	pc

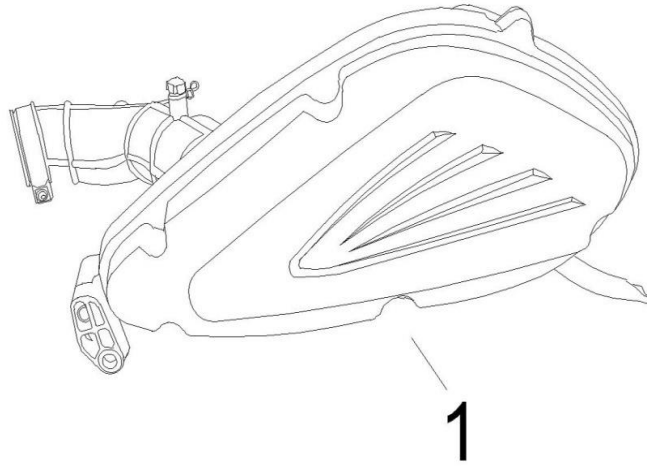


图17 铁筒消声器 Muffler turned cylinder

序号 REF.	代码 CODE	NAME	数量quantity	单位UNIT(piece)
1	125T-2-17-01	Muffler assy	1	pc
2		OXYGEN SENSOR	1	pc
3	QT-16-17-03	Muffler gasket	1	pc
4	QT-16-17-02	High-cap-shaped nut	2	pc
5	QT-16-17-04	Hexagon flange bolts	2	pc
6	QT-16-17-08	spring washer	3	pc
7	QT-16-17-09	flat gasket	3	pc

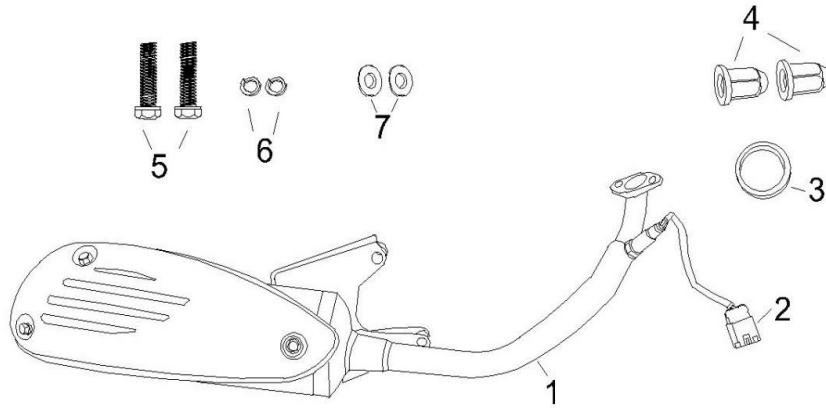




图18 车架部分及车架散件 Spare parts parts and chassis frame

序号 REF.	代码 CODE	NAME	数量quantity	单位UNIT(piece)
1	125T-2-18-01	Frame welding assemblies/125CC	1	pc
2			1	pc
3		ECU (ELECTRIC CONTROL UNIT)	1	pc
4	QT-16-18-18	Tail light bracket/50CC	1	pc
5			1	pc
6	QT-16-18-12	Welding combination cradle/50CC	1	pc
7	QT-16-18-15	Cradle welding buffer block	2	pc
8	QT-16-18-16	Hexagon flange bolts	2	pc
9	125T-2-18-08	Combination of the main support welding	1	pc
10	QT-16-18-11	Main support buffer block	1	pc
11	QT-16-18-10	Main support springs and rubber sleeve	1	pc
12	QT-16-18-09	Hexagon flange bolts	2	pc
13	QT-16-18-05	Combination of side support weld	1	pc
14	QT-16-18-07	Edge support springs and rubber sleeve	1	pc
15	QT-16-18-06	Side support mounting bolt	1	pc
16		Hexagon flange bolts	1	pc

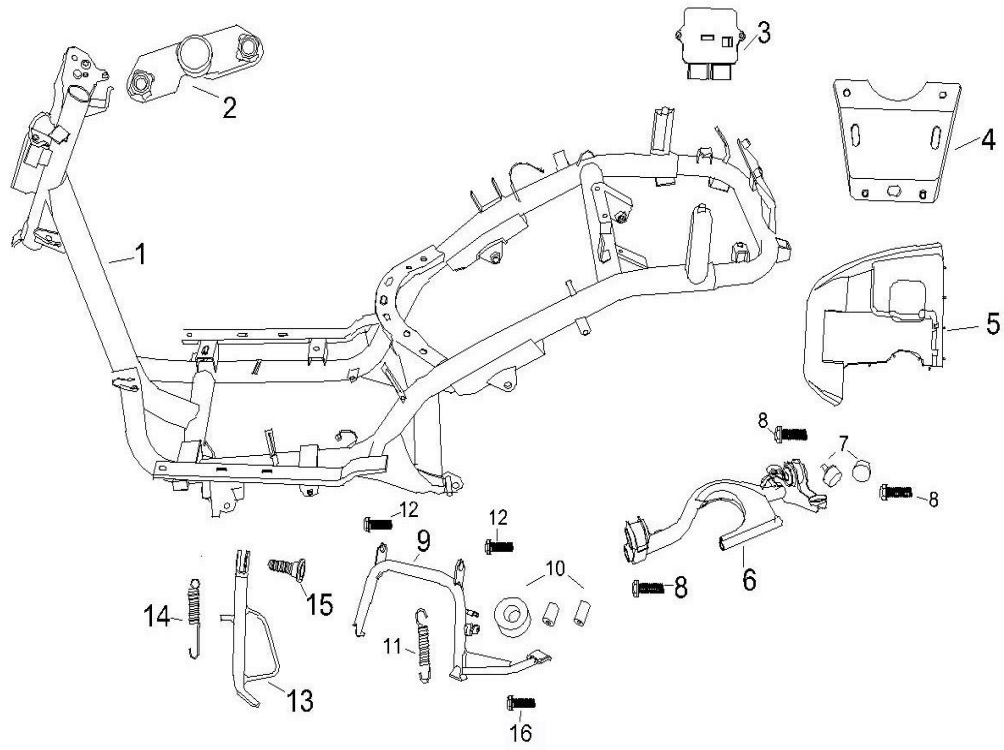


图19 随车工具 driver's tool

序号 REF.	代码 CODE	NAME	数量quantity	单位UNIT(piece)
1		driver tool bag	1	pc
2		Four red 125	1	pc
3		14×17	1	pc
4		10*12	1	pc
5		screw driver	1	pc
6		currency	1	pc
7		Hexagonal key	1	pc

