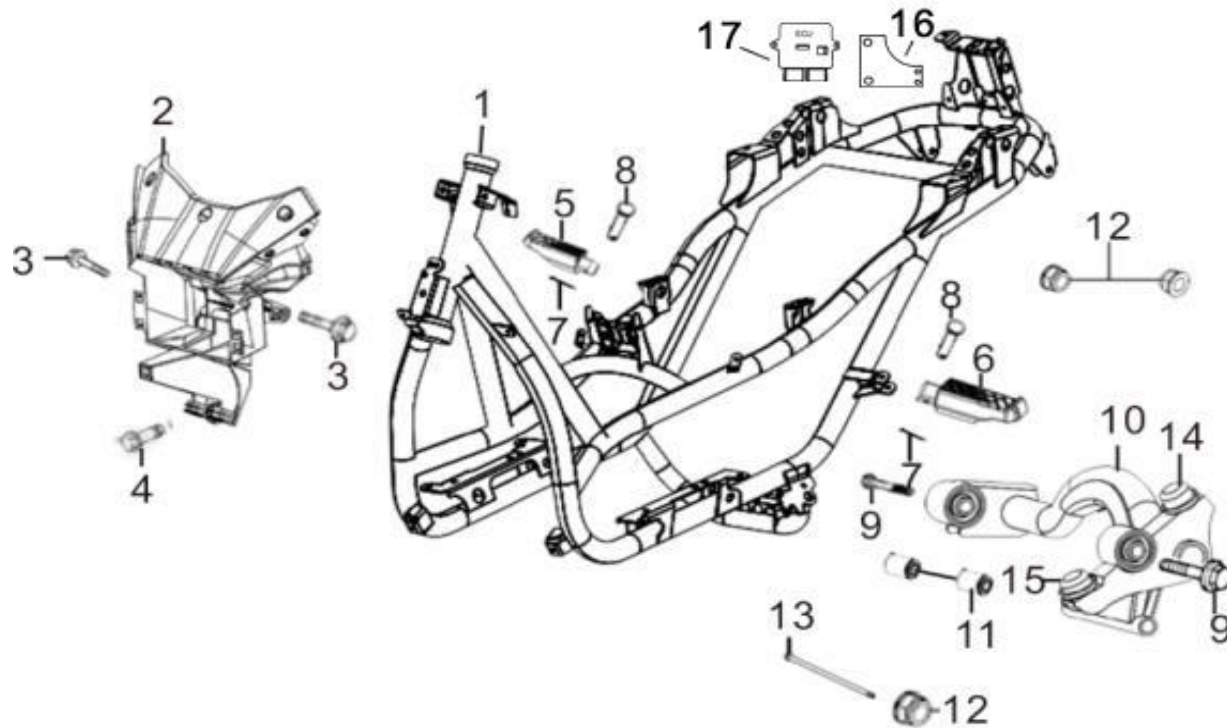


ADAMOTO T9 125 MAXI PARTS CATALOG



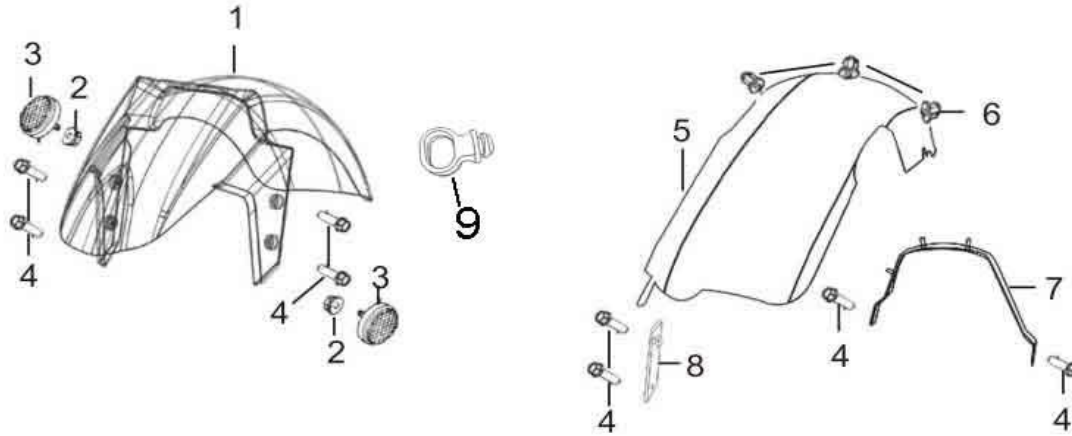
FRAME BODY



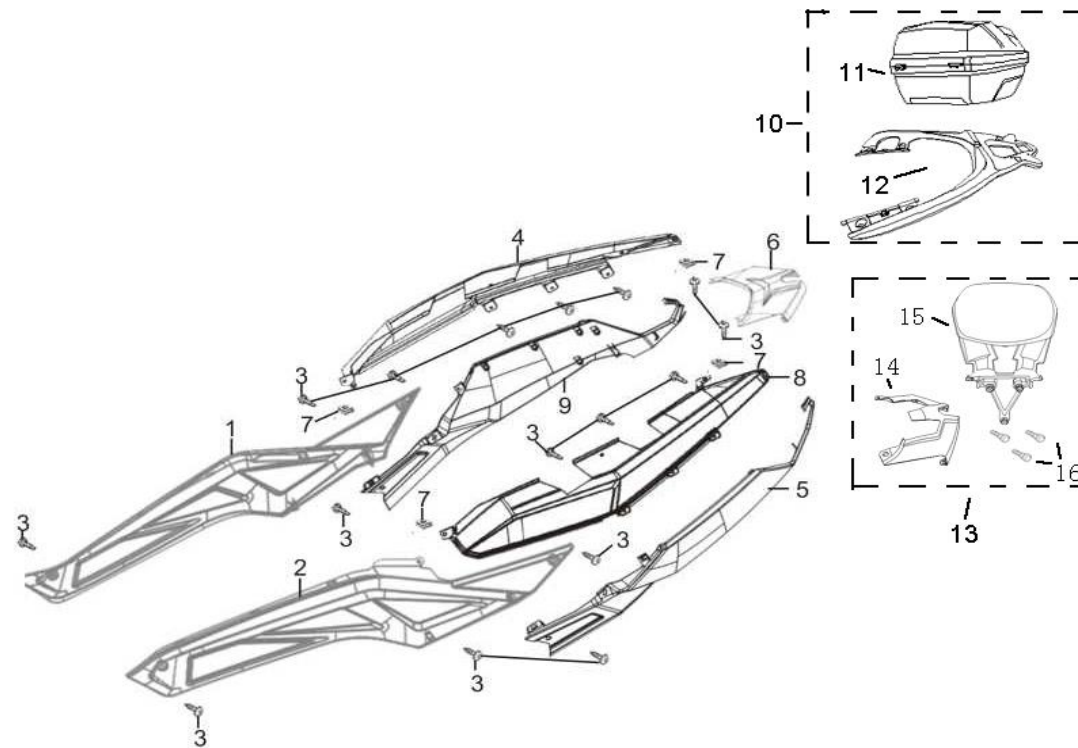
NO.	PART CODE	En. Name	Qty.	Unit
1	TY125T-H-01-001	FRAME BODY	1	pc
2	TY125T-H-01-002	BRACKET,COVER FR	1	pc
3	TY125T-H-01-003	BOLT FLANGE M8×25	2	pc
4	TY125T-H-01-004	BOLT FLANGE M8×20	1	pc
5	TY125T-H-01-005	BAR R STEP ASSY	1	pc
6	TY125T-H-01-006	BAR L STEP ASSY	1	pc
7	TY125T-H-01-007	PIN SPLIT 1.6*15	1	pc

8	TY125T-H-01-008	PIN RR STEP 6*31.5	1	pc
9	TY125T-H-01-009	BOLT FLANGE 10*55	2	pc
10	TY125T-H-01-010	HANGER OF ENGINE	1	pc
11	TY125T-H-01-011	BUSH SWING LOCK	1	pc
12	TY125T-H-01-012	NUT FLANGE 10MM	3	pc
13	TY125T-H-01-013	FLANGE BOLT M10×1.25×235	1	pc
14	TY125T-H-01-014	RUBBER STOPPER A	1	pc
15	TY125T-H-01-015	RUBBER STOPPER B	1	pc
16	TY125T-H-01-016	ECU INSTALLING BRACKET	1	pc
17	TY125T-H-01-017	ECU (ELECTRIC CONTROL UNIT)	1	pc

1

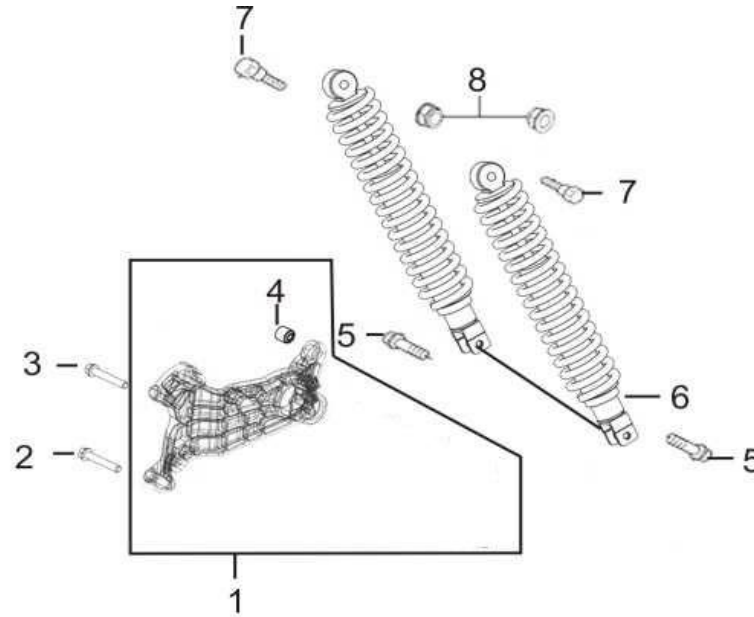
FENDER

NO.	PART CODE	En. Name	Qty.	Unit
1	TY125T-H-02-001	FRONT FENDER	1	pc
2	TY125T-H-02-002	NUT 6M M	2	pc
3	TY125T-H-02-003	REFLEX REFLECTOR SIDE	2	pc
4	TY125T-H-02-004	BOLT FLANGE M6×16	8	pc
5	TY125T-H-02-005	FENDER RR TIRE	1	pc
6	TY125T-H-02-006	NUT (H EX) CAP 6M M	4	pc
7	TY125T-H-02-007	RIGHT BRACKET,FENDER RR TIRE	1	pc
8	TY125T-H-02-008	BRACKET,FENDER RR TIRE	1	pc
9	TY125T-H-02-009	SPEEDOMETER CABLE CLAP	1	pc

BODY COVER

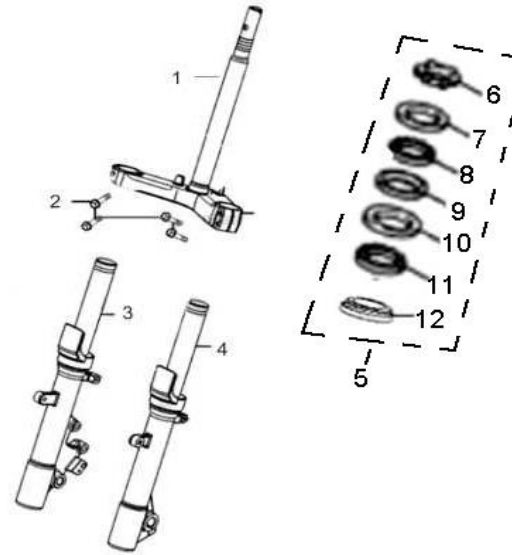
NO.	PART CODE	En. Name	Qty.	Unit
1	TY125T-H-03-001	COVER R SIDE	1	pc
2	TY125T-H-03-002	COVER L SIDE	1	pc
3	TY125T-H-03-003	SCREW TAPPING 4*12 (K)	16	pc
4	TY125T-H-03-004	Right trim panel	1	pc
5	TY125T-H-03-005	Lower left trim panel	1	pc
6	TY125T-H-03-006	Tail light upper cover	1	pc
7	TY125T-H-03-007	NUT SPRING 4MM	4	pc

8	TY125T-H-03-008	Left trim panel	1	pc
9	TY125T-H-03-009	Lower right trim panel	1	pc
10	TY125T-H-03-010	REAR BOX ASSY	1	pc
11	TY125T-H-03-011	BIG REAR CARRIER FOR REAR B	1	pc
12	TY125T-H-03-012	REAR BOX	1	pc
13	TY125T-H-03-013	BACKREST ASSY	1	pc
14	TY125T-H-03-014	Tail light upper cover, For backrest on	1	pc
15	TY125T-H-03-016	BACKREST	1	pc
16	TY125T-H-03-017	BACKREST BRACKET INSTALLIN	3	pc

REAR SHOCK ABSORBER

NO.	PART CODE	En. Name	Qty.	Unit
1	TY125T-H-04-001	Power connecting plate	1	set
2	TY125T-H-04-002	BOLT FLANGE M8×70	1	pc
3	TY125T-H-04-003	BOLT FLANGE M8×60	1	pc
4	TY125T-H-04-005	BOLT FLANGE M8×40	2	pc
5	TY125T-H-04-006	CUSHION ASSY., R R .	2	pc
6	TY125T-H-04-007	BOLT HEX 8*27	2	pc
7	TY125T-H-04-008	NUT 10M M	2	pc
8	TY125T-H-04-008	NUT 10M M	2	pc

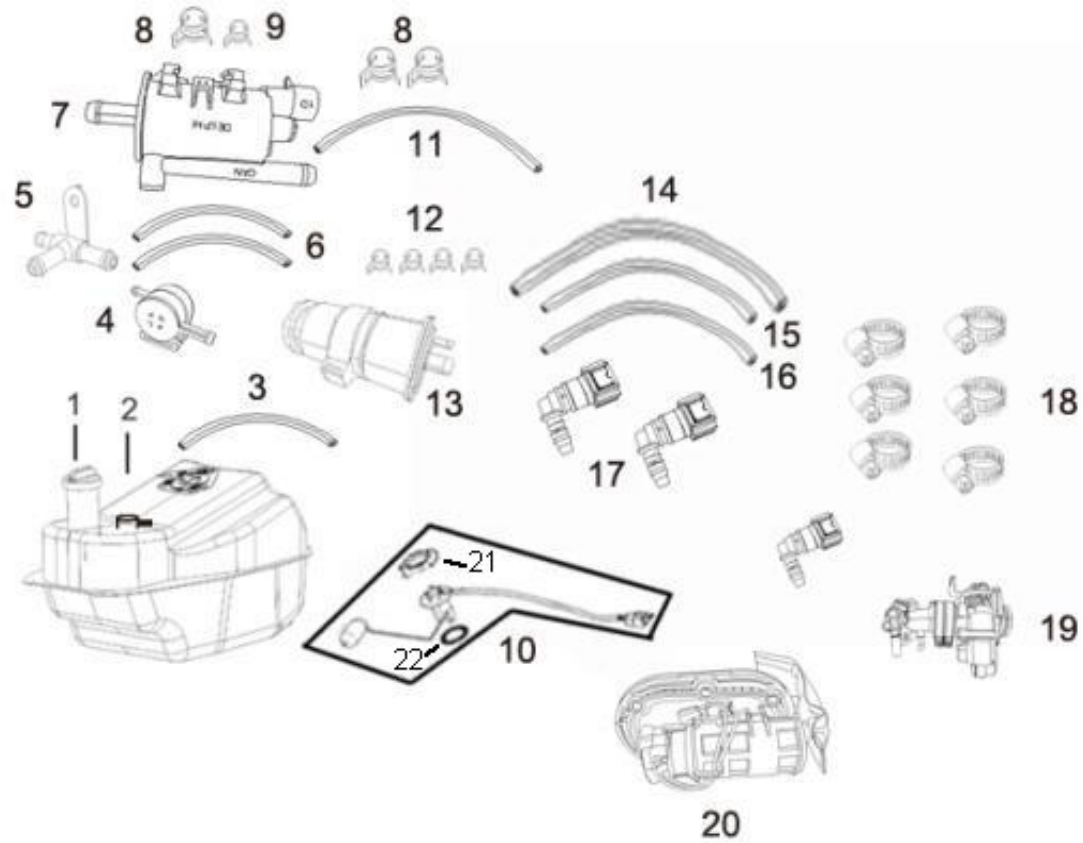
FRONT FORK



NO.	PART CODE	En. Name	Qty.	Unit
1	TY125T-H-05-001	STEERING BAR	1	pc
2	TY125T-H-05-002	BOLT FLANGE M8×45	4	pc
3	TY125T-H-05-003	R.FR.FORK ASSY.	1	pc
4	TY125T-H-05-004	L.FR.FORK ASSY.	1	pc
5	TY125T-H-05-005	FULL SET STEEL BOWL	1	set
6	TY125T-H-05-005	TOP NUT,STEERING STEM	2	set
7		BOWL 1	1	
8		BALL ASSY.,UPPER	22	
9		BEAR ING TOP STRG	1	
10		BOWL 2	1	
11		BALL ASSY.,LOWER	17	
12		BEAR ING BOT STRG	1	

FUEL TANK

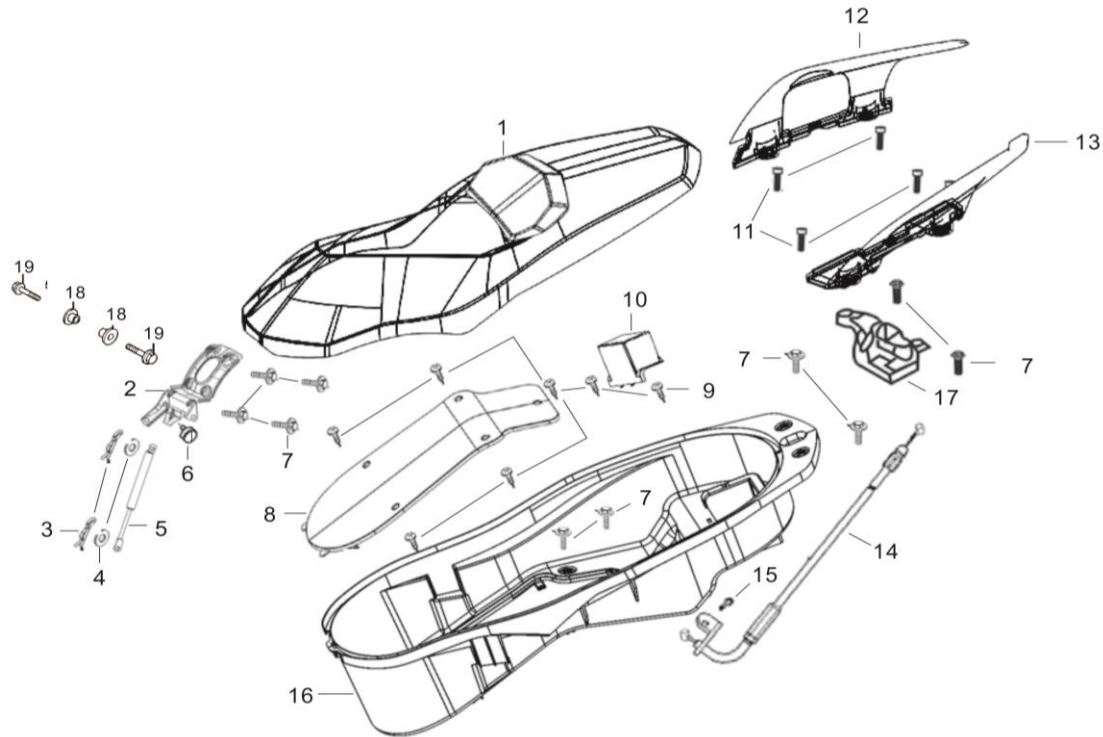
11



NO.	PART CODE	En. Name	Qty.	Unit
1	TY125T-H-06-001	CAP SET FILLER	1	pc
2	TY125T-H-06-002	FUEL TANK	1	pc

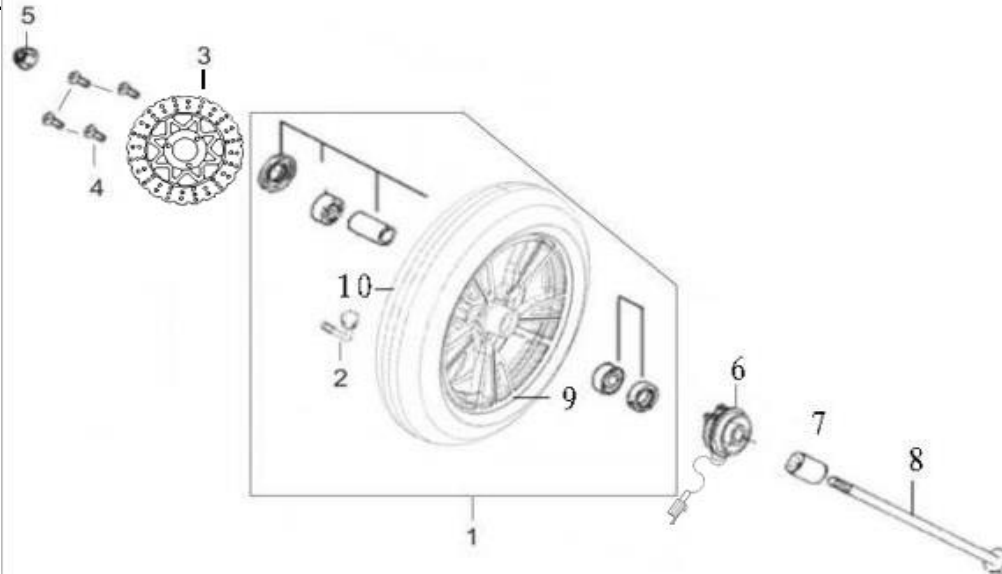
3	TY125T-H-06-003	COMMON FUEL TUBE	1	pc
4	TY125T-H-06-004	DUMP VALVE	1	pc
5	TY125T-H-06-005	THREE-WAY VALVE	1	pc
6	TY125T-H-06-006	COMMON FUEL TUBE	2	pc
7	TY125T-H-06-007	CARBON CANISTER SOLENOID V	1	pc
8	TY125T-H-06-008	CLAMP ϕ 10	3	pc
9	TY125T-H-06-009	CLAMP ϕ 8.3	1	pc
10	TY125T-H-06-010	FUEL SENSOR ASSY	1	pc
11	TY125T-H-06-011	COMMON FUEL TUBE	1	pc
12	TY125T-H-06-012	CLAMP ϕ 8.3	4	pc
13	TY125T-H-06-013	CARBON CANISTER OX-TGM-2 O	1	pc
14	TY125T-H-06-014	HIGH VOLTAGE FUEL TUBE	1	pc
15	TY125T-H-06-015	HIGH VOLTAGE FUEL TUBE	1	pc
16	TY125T-H-06-016	HIGH VOLTAGE FUEL TUBE	1	pc
17	TY125T-H-06-017	DEDICATED CATHODIC JOINT FC	3	pc
18	TY125T-H-06-018	CLAMP FOR HIGH VOLTAGE FUE	6	pc
19	TY125T-H-06-019	THROTTLE VALVE ASSY	1	pc
20	TY125T-H-06-020	HORIZONTAL FUEL PUMP	1	pc
21	TY125T-H-06-021	SENER CLIP	1	pc
22	TY125T-H-06-022	SENER SEALING GASKET	1	pc

SEAT ASSY

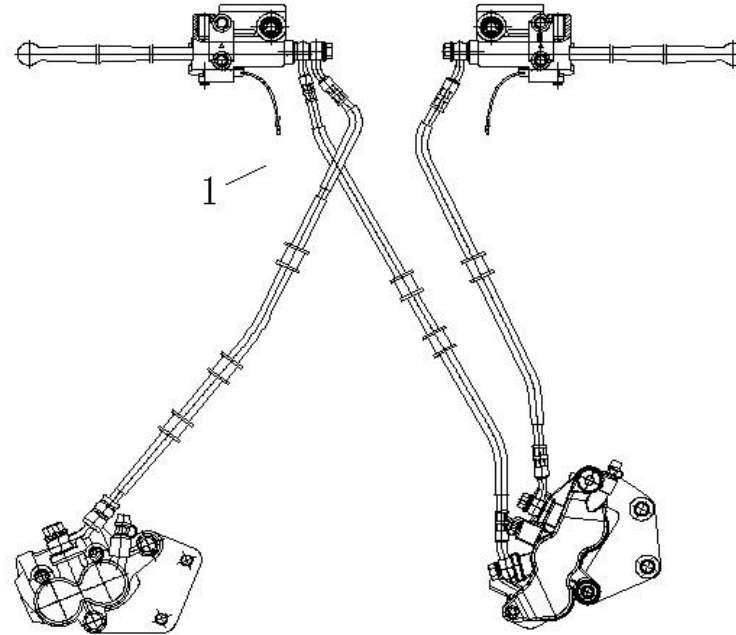


NO.	PART CODE	En. Name	Qty.	Unit
1	TY125T-H-07-001	SEAT	1	pc
2	TY125T-H-07-002	HINGE ASSY SEAT	1	pc
3	TY125T-H-07-003	PIN LOCK 8M M	2	pc
4	TY125T-H-07-004	WASH PLAIN 8MM	2	pc
5	TY125T-H-07-005	Cushion gas spring	1	pc
6	TY125T-H-07-006	RUBBER STOPPER A	1	pc
7	TY125T-H-07-007	BOLT FLANGE M6×12	8	pc

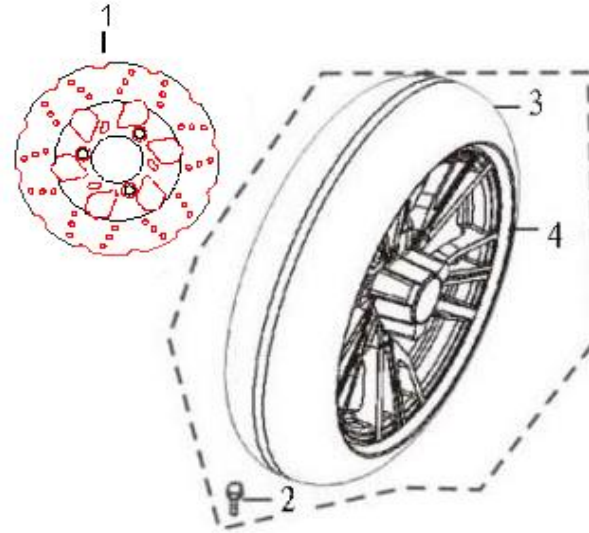
8	TY125T-H-07-008	LID CARB MAINT	1	pc
9	TY125T-H-07-009	SCREW TAPPING 4*12 (K)	7	pc
10	TY125T-H-07-010	COVER BATTERY	1	pc
11	TY125T-H-07-011	BOLT FLANGE M8×25	4	pc
12	TY125T-H-07-012	Right rear shelf	1	pc
13	TY125T-H-07-013	Left rear shelf	1	pc
14	TY125T-H-07-014	CABLE OF SEAT LOCK	1	pc
15	TY125T-H-07-015	SCREW SPECIAL	1	pc
16	TY125T-H-07-016	LUGGAGE BOX ASSY	1	pc
17	TY125T-H-07-017	LOCK BASE OF SEAT	1	pc
18	TY125T-H-07-018	COLLAR HINGE ASSY SEAT	2	pc
19	TY125T-H-07-019	BOLT FLANGE M6×20	8	pc

FRONT WHEEL

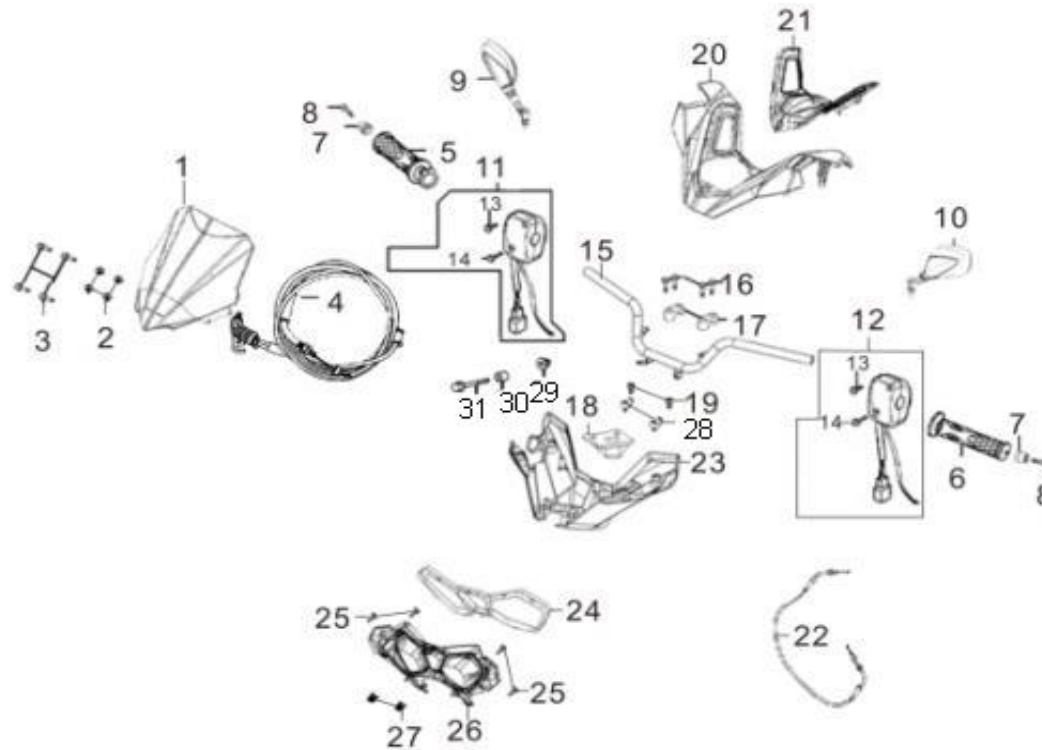
NO.	PART CODE	En. Name	Qty.	Unit
1	TY125T-H-08-001	FRONT WHEEL	1	set
2	TY125T-H-08-002	VALVE RIM	1	pc
3	TY125T-H-08-003	DISK FR BRAKE	1	pc
4	TY125T-H-08-004	BOLT FR DISK 8*24	3	pc
5	TY125T-H-08-005	NUT U FLANGE	1	pc
6	TY125T-H-08-006	GEAR BOX ASSY FOR CALCULAT	1	pc
7	TY125T-H-08-007	COLLAR RR AXLE	1	pc
8	TY125T-H-08-008	AXLE FR WHEEL	1	pc
9	TY125T-H-08-009	FRONT RIM 14"	1	pc
10	TY125T-H-08-010	FRONT TIRE 120/80-14, CST	1	pc

BRAKE SYSTEM

NO.	PART CODE	En. Name	Qty.	Unit
1	TY125T-H-09-001	FRONT AND REAR GANGED DISK	1	set

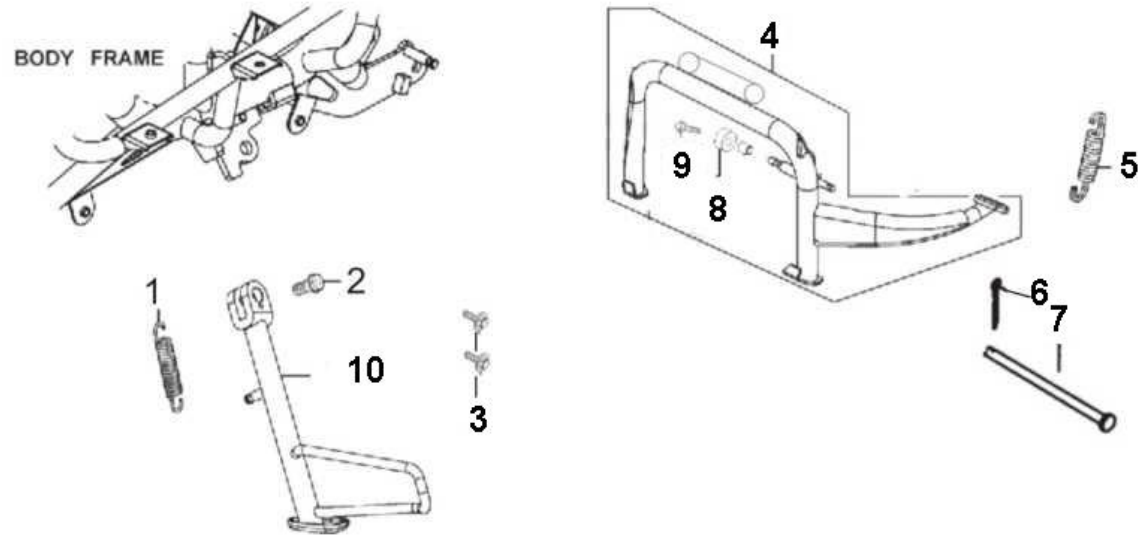
REAR WHEEL

NO.	PART CODE	En. Name	Qty.	Unit
1	TY125T-H-10-001	REAR BRAKE DISK	1	pc
2	TY125T-H-10-002	VALVE RIM	1	pc
3	TY125T-H-10-003	REAR TIRE,13",CST	1	pc
4	TY125T-H-10-004	REAR RIM;13"	1	pc

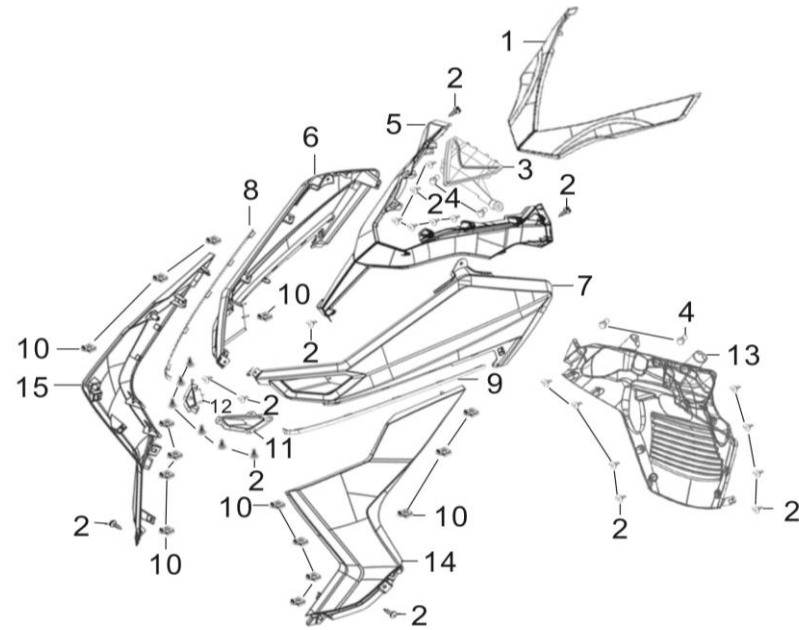
HANDLE BAR

NO.	PART CODE	En. Name	Qty.	Unit
1	TY125T-H-11-001	WIND SCREEN	1	pc
2	TY125T-H-11-002	RUBBER WIND SCREEN	1	pc
3	TY125T-H-11-003	BO LT W ASH ER5*20	4	pc
4	TY125T-H-11-004	THROTTLE CABLE	1	pc
5	TY125T-H-11-005	THROTTLE GRIP,HANDLE	1	pc
6	TY125T-H-11-006	L.GRIP,HANDLE	1	pc
7	TY125T-H-11-007	END HANDLE	2	pc

8	TY125T-H-11-008	BOLT W ASH M 8*60	2	pc
9	TY125T-H-11-009	MIRROR ASSY R BACK	1	pc
10	TY125T-H-11-010	MIRROR ASSY L BACK	1	pc
11	TY125T-H-11-011	SWITCH,HANDLEBAR R.	1	pc
12	TY125T-H-11-012	SWITCH,HANDLEBAR L.	1	pc
13	TY125T-H-11-013	SCREW PAN 5*25	1	pc
14	TY125T-H-11-014	SCREW PAN 5*32	1	pc
15	TY125T-H-11-015	HANDLE BAR	1	pc
16	TY125T-H-11-016	BOLT WASH M 8*30	4	pc
17	TY125T-H-11-017	HOLD ER HANDLE PIPE	2	pc
18	TY125T-H-11-018	CLIP, BRAKEHO SE(TOP BRIDGE)	1	pc
19	TY125T-H-11-019	BOLT M10*45	2	pc
20	TY125T-H-11-020	HANDLE COVER UP	1	pc
21	TY125T-H-11-021	Cover the upper cover	1	pc
22	TY125T-H-11-022	CABLE COMP RR BRK	1	pc
23	TY125T-H-11-023	HANDLE COVER LOW	1	pc
24	TY125T-H-11-024	Instrument cover decorative cover	1	pc
25	TY125T-H-11-025	SCREW TAPPING 4*12 (K)	4	pc
26	TY125T-H-11-026	Instrument cover	1	pc
27	TY125T-H-11-027	NUT SPRING 4MM	2	pc
28	TY125T-H-11-028	HOLD LOW HANDLE PIPE	2	pc
29	TY125T-H-11-029	NUT 10M	1	pc
30	TY125T-H-11-030	BUSH,HANDLE BAR	1	pc
31	TY125T-H-11-031	BOLT FLANGE M8-10×55	1	pc

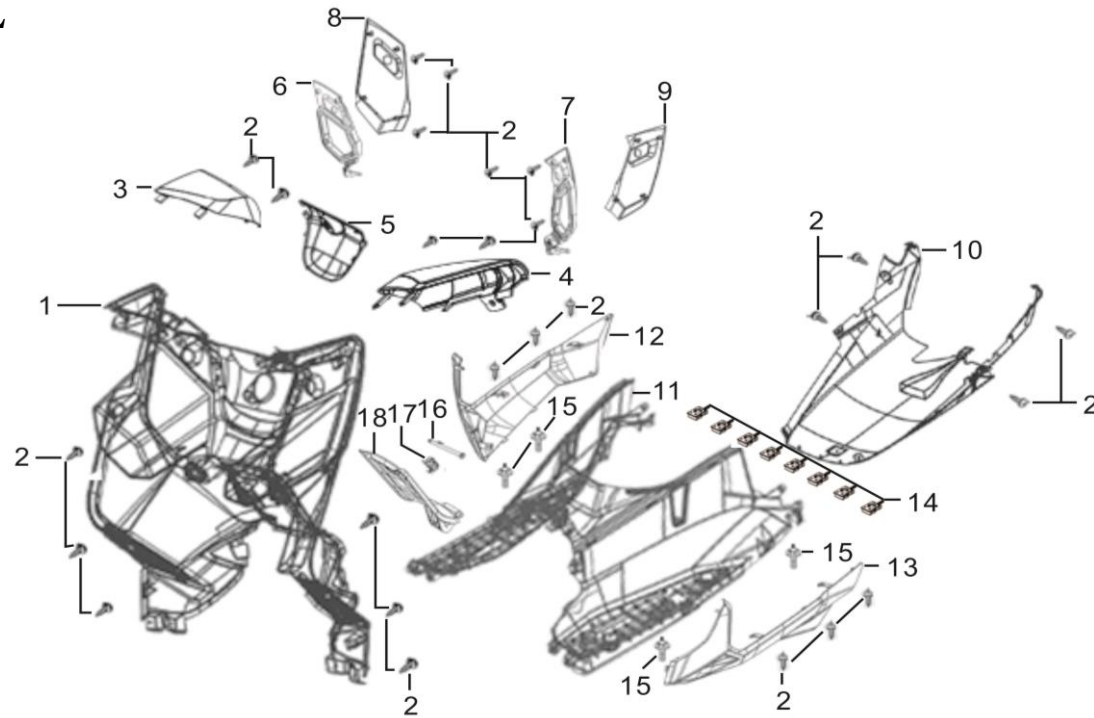
STAND ASSY

NO.	PART CODE	En. Name	Qty.	Unit
1	TY125T-H-12-001	SPRING OF SIDE STAND	1	pc
2	TY125T-H-12-002	SCREW SIDE STAND PIVOT	1	pc
3	TY125T-H-12-003	BOLT WASH ER6*20	2	pc
4	TY125T-H-12-004	STAND ASSY MAIN	1	pc
5	TY125T-H-12-005	SPRING OF MAIN STAND	1	pc
6	TY125T-H-12-006	PIN LOCK 8M M	1	pc
7	TY125T-H-12-007	AXLE MIAN STAND	1	pc
8	TY125T-H-12-008	RUBBER STOPPER MAIN	1	pc
9	TY125T-H-12-009	BOLT FLANGE M6×12	1	pc
10	TY125T-H-12-010	BAR SIDE STAND	1	pc

FRONT COVER

NO.	PART CODE	En. Name	Qty.	Unit
1	TY125T-H-13-001	Front panel trim cover	1	pc
2	TY125T-H-13-002	SCREW TAPPING 4*12 (K)	18	pc
3	TY125T-H-13-003	LID BRACKET,COVER FR	1	pc
4	TY125T-H-13-004	BOLT FLANGE M6×12	2	pc
5	TY125T-H-13-005	front panel	1	pc
6	TY125T-H-13-006	Front right trim panel	1	pc
7	TY125T-H-13-007	Front left trim panel	1	pc
8	TY125T-H-13-008	Decorative strip for right decorative bo	1	pc

9	TY125T-H-13-009	Decorative strip for left decorative board	1	pc
10	TY125T-H-13-010	NUT SPRING 4MM	14	pc
11	TY125T-H-13-011	Left front trim panel cover	1	pc
12	TY125T-H-13-012	Right front trim panel cover	1	pc
13	TY125T-H-13-013	Ventilation grid	1	pc
14	TY125T-H-13-014	Lower front left trim panel	1	pc
15	TY125T-H-13-015	Lower front right trim panel	1	pc

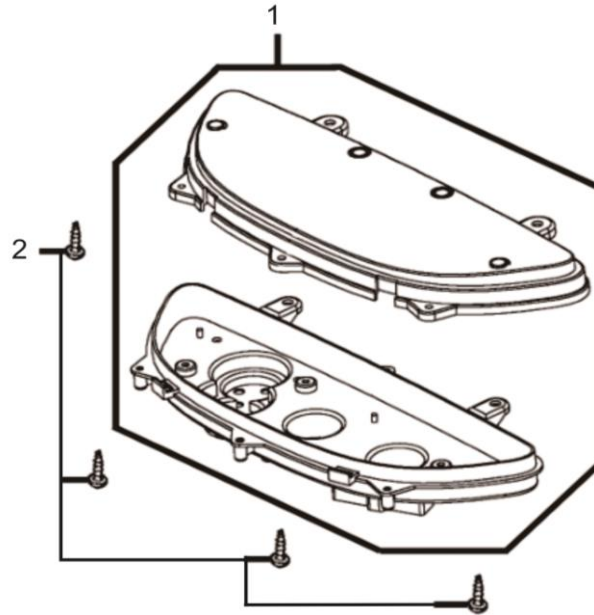
FLOOR PANEL

NO.	PART CODE	En. Name	Qty.	Unit
1	TY125T-H-14-001	Tool kit	1	pc
2	TY125T-H-14-002	SCREW TAPPING 4*12 (K)	18	pc
3	TY125T-H-14-003	COVER R LEG SIELD UP	1	pc
4	TY125T-H-14-004	COVER L LEG SIELD UP	1	pc
5	TY125T-H-14-005	COVER MIAN LOCK	1	pc
6	TY125T-H-14-006	COVER R INTER LID FR INTER BC	1	pc
7	TY125T-H-14-007	COVER L INTER LID FR INTER BC	1	pc
8	TY125T-H-14-008	COVER R OUTER LID FR INTER B	1	pc

9	TY125T-H-14-009	COVER L OUTER LID FR INTER B	1	pc
10	TY125T-H-14-010	COVER UNDER	1	pc
11	TY125T-H-14-011	PAN EL FLO O R	1	pc
12	TY125T-H-14-012	Right guard	1	pc
13	TY125T-H-14-013	Left guard	1	pc
14	TY125T-H-14-014	NUT SPRING 4MM	8	pc
15	TY125T-H-14-015	BOLT FLANGE M6×20	4	pc
16	TY125T-H-14-016	Tank bracket	1	pc
17	TY125T-H-14-017	PIN LO C K 8M M	1	pc
18	TY125T-H-14-018	LID FUEL CAP MAIN T	1	pc

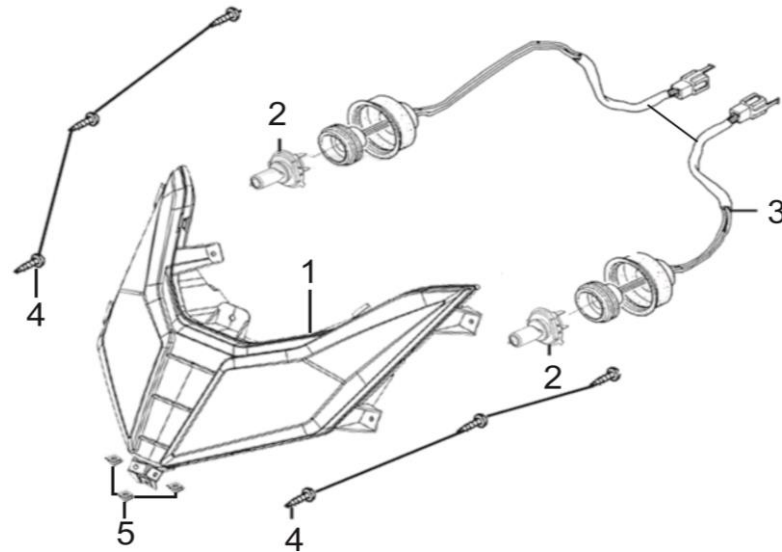
14

SPEEDOMETER

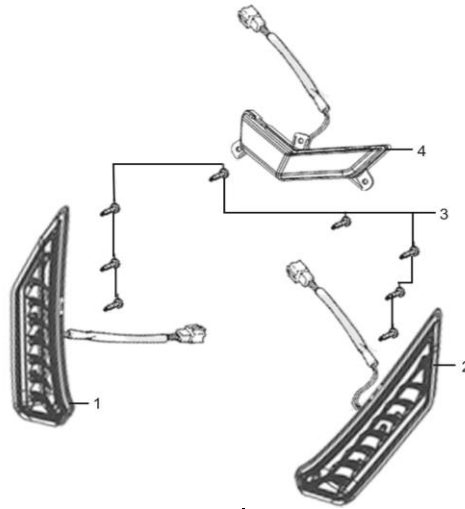


NO.	PART CODE	En. Name	Qty.	Unit
1	TY125T-H-15-001	SPEEDOMETER ASSY.(MILE/DOT)	1	pc
2	TY125T-H-15-002	SCREW TAPPING 4*12 (K)	4	pc

HEADLIGHT



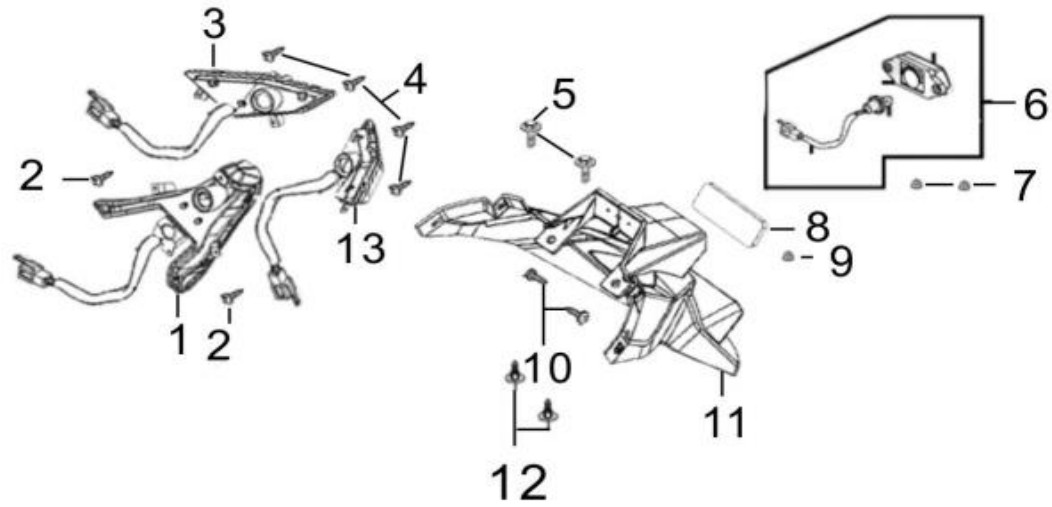
NO.	PART CODE	En. Name	Qty.	Unit
1	TY125T-H-16-001	HEADLIGHT	1	set
2	TY125T-H-16-002	BULB OF HEADLIGHT 12V 35/35W	2	pc
3	TY125T-H-16-003	SOCKET COMP	1	pc
4	TY125T-H-16-004	SCREW TAPPING 4*12 (K)	6	pc
5	TY125T-H-16-005	NUT SPRING 4MM	3	pc

WINKER

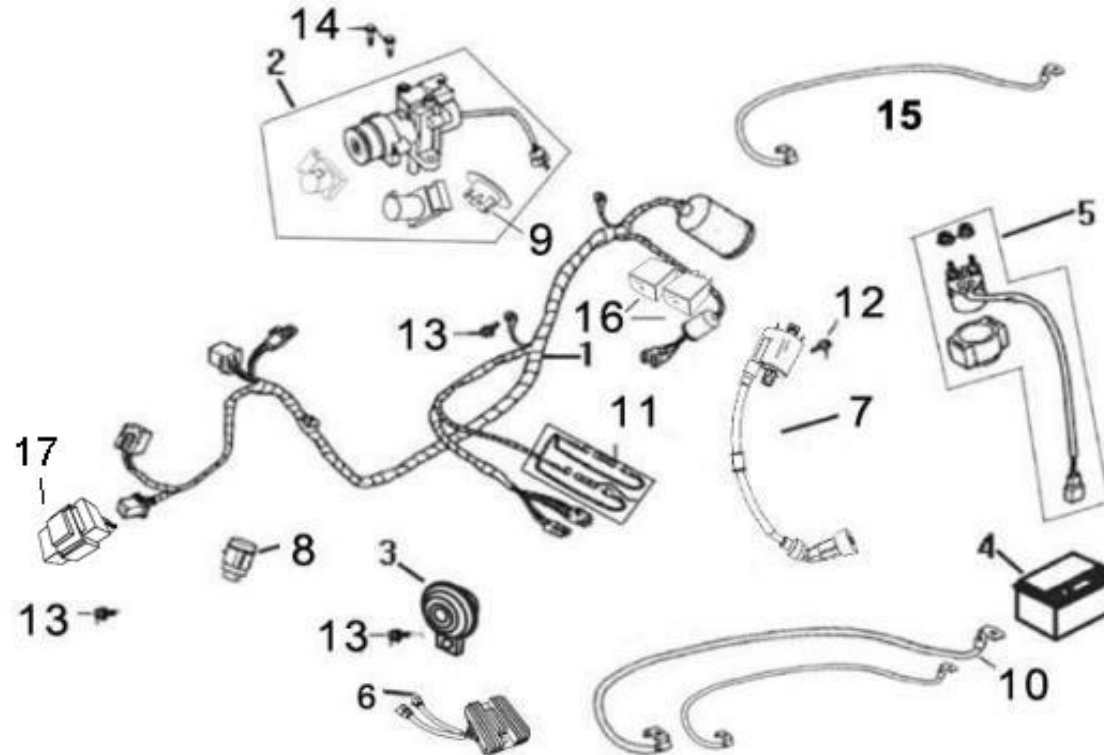
NO.	PART CODE	En. Name	Qty.	Unit
1	TY125T-H-17-001	W IN KER ASSY.. R . FR	1	pc
2	TY125T-H-17-002	W IN KER ASSY.. L . FR	1	pc
3	TY125T-H-17-003	SCREW TAPPING 4*12 (K)	8	pc
4	TY125T-H-17-004	Front position lamp	1	pc

17

TAILLIGHT



NO.	PART CODE	En. Name	Qty.	Unit
1	TY125T-H-18-001	RIGHT TAILLIGHT ASSY	1	set
2	TY125T-H-18-002	SCREW TAPPING 4*16 (K)	2	pc
3	TY125T-H-18-003	R.RR.TURNING LIGHT ASSY	1	pc
4	TY125T-H-18-004	SCREW TAPPING 4*12 (K)	6	pc
5	TY125T-H-18-005	BOLT FLANGE M6×16	2	pc
6	TY125T-H-18-006	LICENSE PLATE LAMP	1	pc
7	TY125T-H-18-007	FLANGE NUT M6	2	pc
8	TY125T-H-18-008	REAR REFLECTOR	1	pc
9	TY125T-H-18-009	FLANGE NUT M6	2	pc
10	TY125T-H-18-010	SCREW TAPPING 4*12 (K)	2	pc
11	TY125T-H-18-011	REAR FENDER	1	pc
12	TY125T-H-18-012	SCREW TAPPING 4*16 (K)	2	pc
13	TY125T-H-18-013	L.RR.TURNING LIGHT ASSY	1	pc

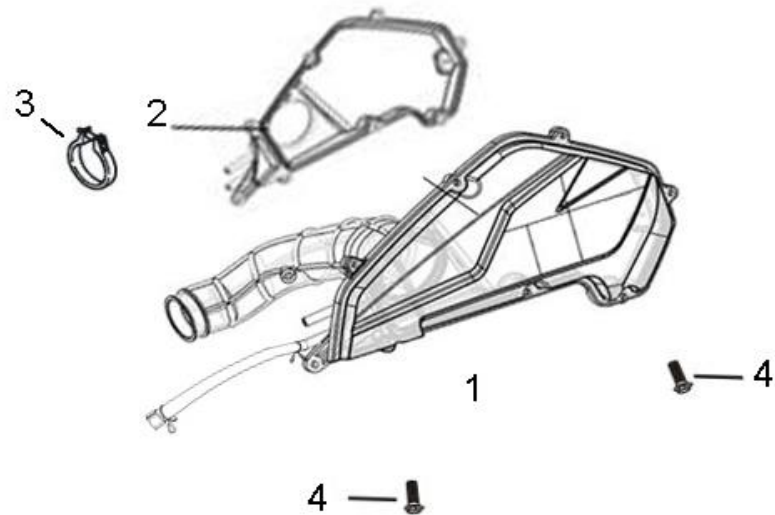
ELECTRICAL SYSTEM

NO.	PART CODE	En. Name	Qty.	Unit
1	TY125T-H-19-001	EFI DEDICATED MAIN WIRE HAR	1	set
2	TY125T-H-19-002	MAIN LOCK ASSY	1	pc
3	TY125T-H-19-003	HORN	1	pc
4	TY125T-H-19-004	BATTERY	1	pc
5	TY125T-H-19-005	START RELAY	1	pc
6	TY125T-H-19-006	DIRECT-CURRENT REGULATOR	1	pc

7	TY125T-H-19-007	IGNITION COIL COMP.	1	pc
8	TY125T-H-19-008	FLASHER	1	pc
9	TY125T-H-19-009	LOCK SET	1	set
10	TY125T-H-19-010	CATHODE LINE	2	pc
11	TY125T-H-19-011	FUSE 10A	2	pc
12	TY125T-H-19-012	BOLT HEX 5*20	2	pc
13	TY125T-H-19-013	BOLT FLANGE SH	3	pc
14	TY125T-H-19-014	BO LT W ASH M 8*30	4	pc
15	TY125T-H-19-015	STARTING ANI\ODIC WIRE	1	pc
16	TY125T-H-19-016	EFI DEDICATED RELAY	2	pc
17	TY125T-H-19-017	Headlight controller	1	pc

19

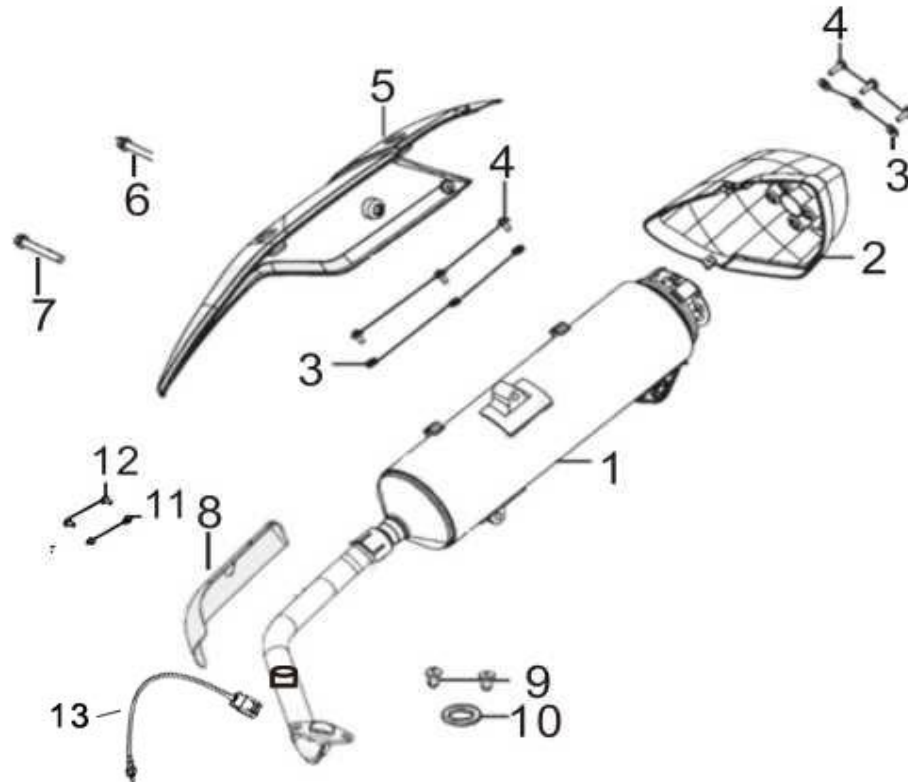
AIR FILTER



NO.	PART CODE	En. Name	Qty.	Unit
1	TY125T-H-20-001	Air filter assy	1	pc
2	TY125T-H-20-002	Air filter element	1	pc
3	TY125T-H-20-003	Air filter exit pipe clamp	1	pc
4	TY125T-H-20-004	Hexagon flange bolts M6×25	2	pc

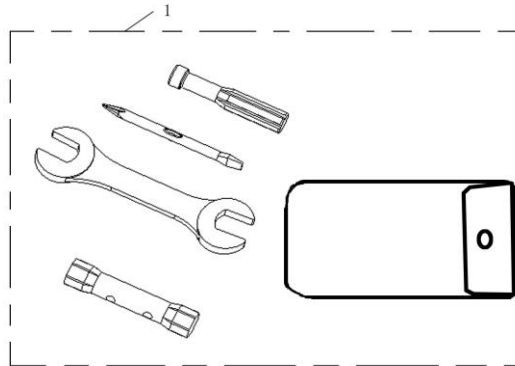
20

EXHAUST SYST

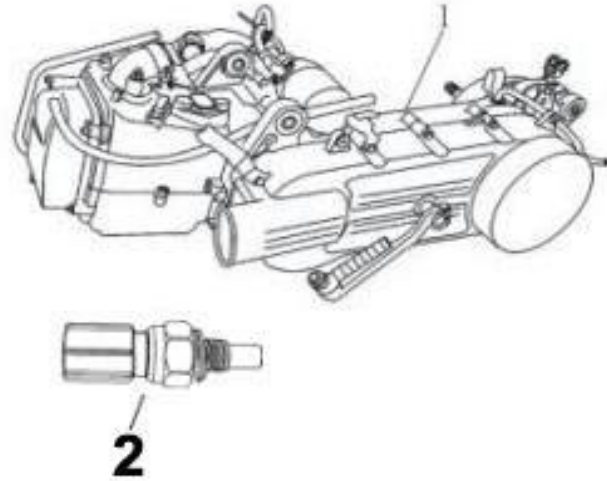


NO.	PART CODE	En. Name	Qty.	Unit
1	TY125T-H-21-001	EXHAUST MUFFLER ASSY.(CATA	1	set
2		TAIL C AP. M U FFLER	1	
3		PAC KING PROTECTOR	6	
4		BO LT W ASH ER 6*20	6	
5	TY125T-H-21-005	MUFF. PROTECTOR	1	pc
6	TY125T-H-21-006	BOLT FLANGE M8×35	1	pc
7	TY125T-H-21-007	BOLT FLANGE M8×55	1	pc
8	TY125T-H-21-008	PROTECTOR . EXH PIPE	1	pc
9	TY125T-H-21-009	NUT (H EX) CAP 8MM	2	pc
10	TY125T-H-21-010	GASKET OF EXHAUST PIPE	1	pc
11	TY125T-H-21-011	PAC KING PROTECTOR	2	pc
12	TY125T-H-21-012	BOLT FLANGE SH 6X16	2	pc
13	TY125T-H-21-013	OXYGEN SENSOR	1	pc

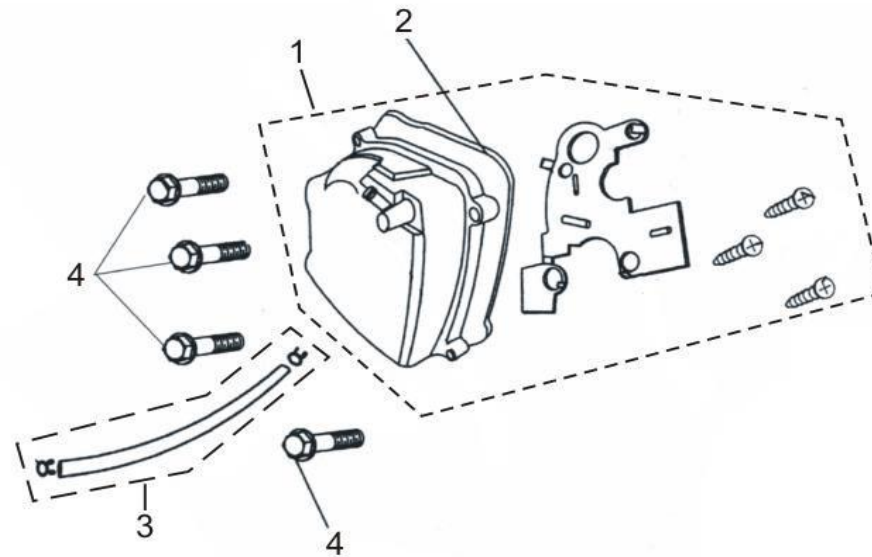
TOOLS



NO.	PART CODE	DESCRIPTION	QTY	Unit
1	TY125T-H-22-01	DRIVER'S TOOLS	1	set

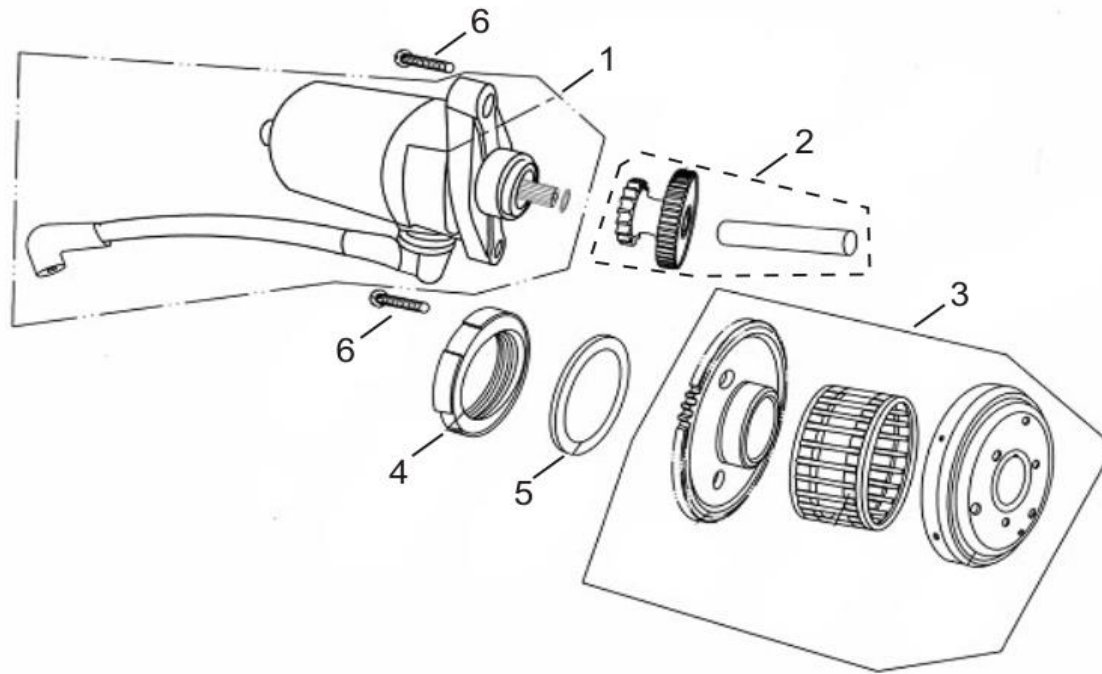
ENGINE

NO.	PART CODE	DESCRIPTION	QTY	Unit
1	152QMI-A-01-001	ENGINE ASSEMBLY	1	pc
2	152QMI-A-01-002	CYLINDER HEAD TEMPERATURE SENSOR	1	pc

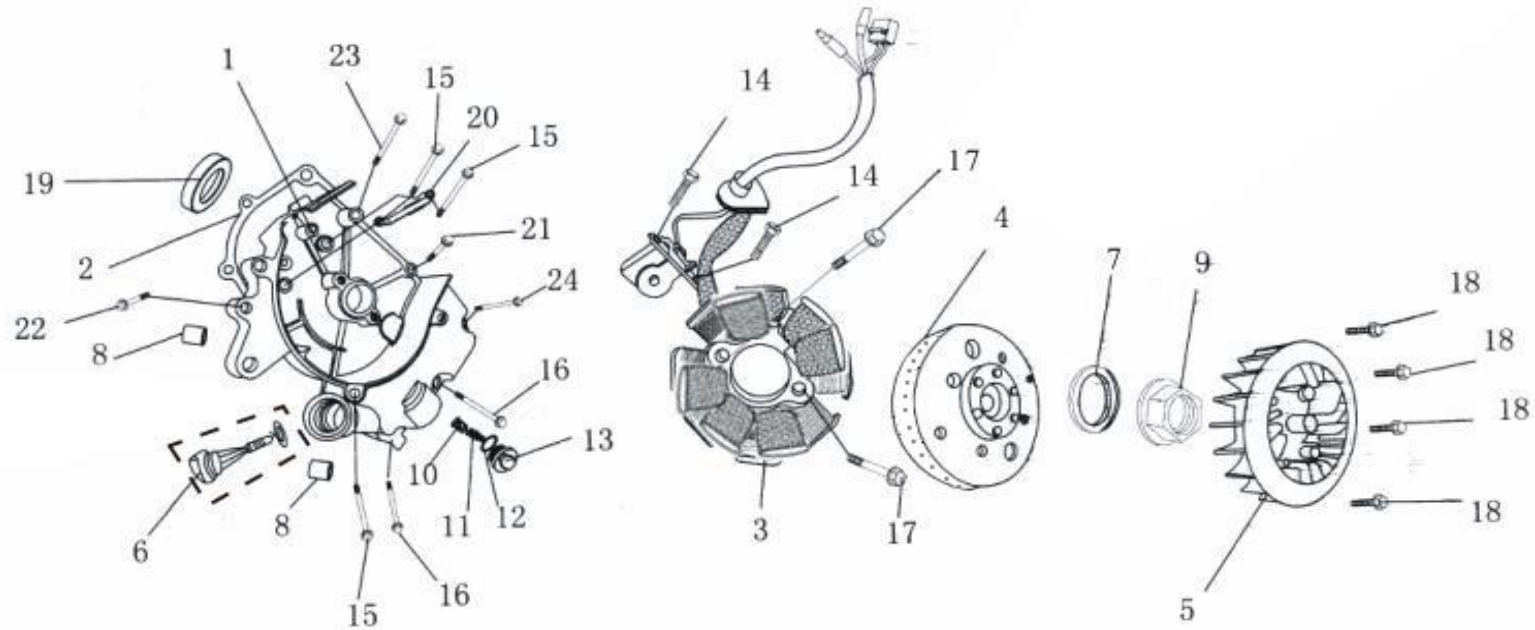
CYLINDER HEAD COVER

NO.	PART CODE	DESCRIPTION	QTY	Unit
1	152QMI-A-02-001	CYLINDER HEAD COVER	1	pc
2	152QMI-A-02-002	WASHER,CYLINDER HEAD COVER	1	pc
3	152QMI-A-02-003	VENT PIPE	1	pc
4	152QMI-A-02-004	FLANGE BOLT M6*25(CHROME)	4	pc

START MOTOR



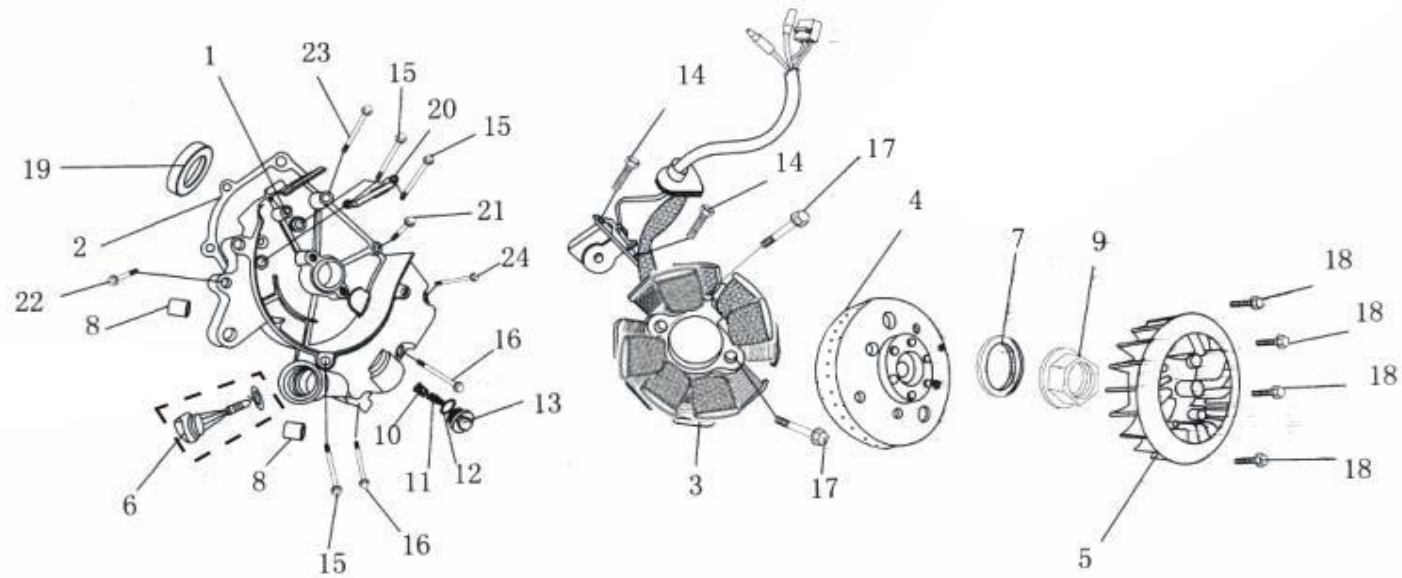
NO.	PART CODE	DESCRIPTION	QTY	Unit
1	152QMI-A-03-001	STARTER MOTOR ASSY	1	pc
2	152QMI-A-03-002	GEAR,STARTER REDUCTION	1	pc
3	152QMI-A-03-003	STARTER CLUTCH ASSY	1	pc
4	152QMI-A-03-004	LOCKNUT M22	1	pc
5	152QMI-A-03-005	WASHER 22(BLACK)	1	pc
6	152QMI-A-03-006	FLANGE BOLT M6*16(CHROME)	2	pc

MAGNETO

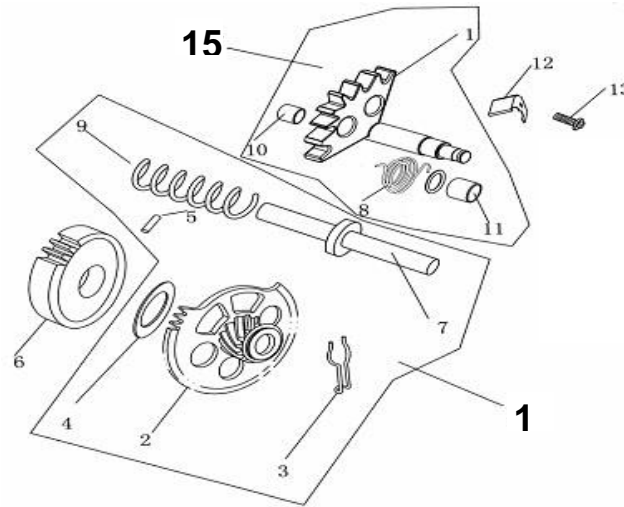
NO.	PART CODE	DESCRIPTION	QTY	Unit
1	152QMI-A-04-001	R.CRANKCASE COVER	1	pc
2	152QMI-A-04-002	GASKET,R.CRANKCASE COVER	1	pc
3	152QMI-A-04-003	COIL ASSY 18 POLE	1	pc
4	152QMI-A-04-004	FLY WHEEL ASSY 18 POLE	1	pc
5	152QMI-A-04-005	FAN	1	pc
6	152QMI-A-04-006	OIL RULE(WITH O-RING)	1	pc
7	152QMI-A-04-007	WASHER 12(BLACK)	1	pc

8	152QMI-A-04-008	LOCATING DEWEL 8*14	2	pc
9	152QMI-A-04-009	FLANGE NUT M12	1	pc
10	152QMI-A-04-010	OIL FILTER	1	pc
11	152QMI-A-04-011	SPRING,OIL FILTER	1	pc
12	152QMI-A-04-012	O-RING 30.8*3	1	pc
13	152QMI-A-04-013	OIL DRAIN CAP	1	pc
14	152QMI-A-04-014	HEX.FLANGE BOLT M5*12	2	pc
15	152QMI-A-04-015	FLANGE BOLT M6*95	3	pc
16	152QMI-A-04-016	FLANGE BOLT M6*110(CHROME)	2	pc
17	152QMI-A-04-017	FLANGE BOLT M6*22	2	pc
18	152QMI-A-04-018	FLANGE BOLT M6*18	4	pc
19	152QMI-A-04-019	OIL SEAL 19.8*30*5	1	pc
20	152QMI-A-04-020	LINE CLAMP,MAGNETO	1	pc

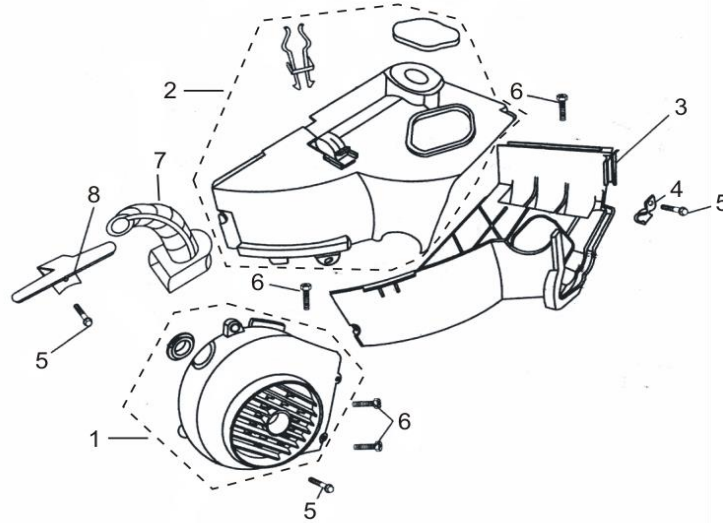
MAGNETO



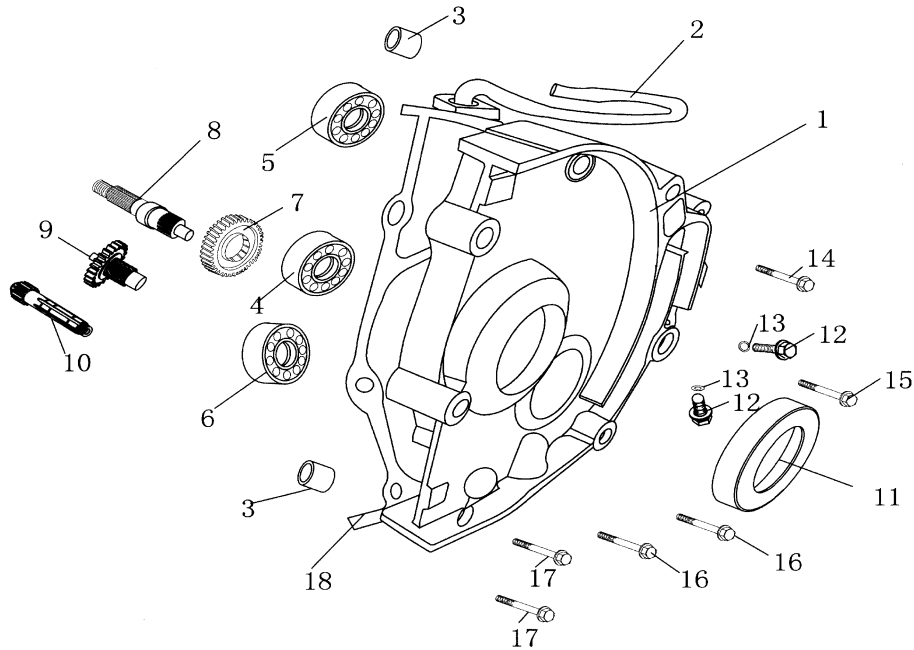
NO.	PART CODE	DESCRIPTION	QTY	Unit
21	152QMI-A-05-001	FLANGE BOLT M6*32(CHROME)	1	pc
22	152QMI-A-05-002	HEX.FLANGE BOLT M6*35	1	pc
23	152QMI-A-05-003	FLANGE BOLT M6*100	1	pc
24	152QMI-A-05-004	FLANGE BOLT M6*95(CHROME)	1	pc

KICK STARTER ASSY

NO.	PART CODE	DESCRIPTION	QTY	Unit
1	152QMI-A-06-001	STARTER AXLE	1	pc
2	152QMI-A-06-002	IDLER WHEEL GEAR	1	pc
3	152QMI-A-06-003	ATTRITION SPRING	1	pc
4	152QMI-A-06-004	PLASTIC WASHER 12*22*1.6	1	pc
5	152QMI-A-06-005	CYLINDRICAL PIN3*8.5	1	pc
6	152QMI-A-06-006	DRIVEN GEAR	1	pc
7	152QMI-A-06-007	IDLER WHEEL AXLE	1	pc
8	152QMI-A-06-008	RETURN SPRING,STARTER AXLE	1	pc
9	152QMI-A-06-009	SPRING,IDLER WHEEL AXLE	1	pc
10	152QMI-A-06-010	BUSH 1,STARTER AXLE	1	pc
11	152QMI-A-06-011	BUSH 2,STARTER AXLE	1	pc
12	152QMI-A-06-012	LOCK PLATE	1	pc
13	152QMI-A-06-013	FLANGE BOLT M6*14(WHITE)	1	pc
14	152QMI-A-06-014	IDLER WHEEL AXLE ASSY	1	set
15	152QMI-A-06-015	STARTER AXLE ASSY.	1	set

FAN COVER

NO.	PART CODE		QTY	Unit
1	152QMI-A-07-001	COOLING FAN COVER(WITH RUBBER PLUG)	1	pc
2	152QMI-A-07-002	UPPER COVER(WITH GASKET)	1	pc
3	152QMI-A-07-003	LOWER COVER(WITH GASKET)	1	pc
4	152QMI-A-07-004	CLAMP,OIL HEADER	1	pc
5	152QMI-A-07-005	FLANGE BOLT M6*25(WHITE)	3	pc
6	152QMI-A-07-006	CROSS HEAD,HEX.SCREW M5*16(BLACK)	4	pc
7	152QMI-A-07-007	COOLING TUBE,CARBURETOR	1	pc
8	152QMI-A-07-008	CLAMP,MOTOR LINE	1	pc

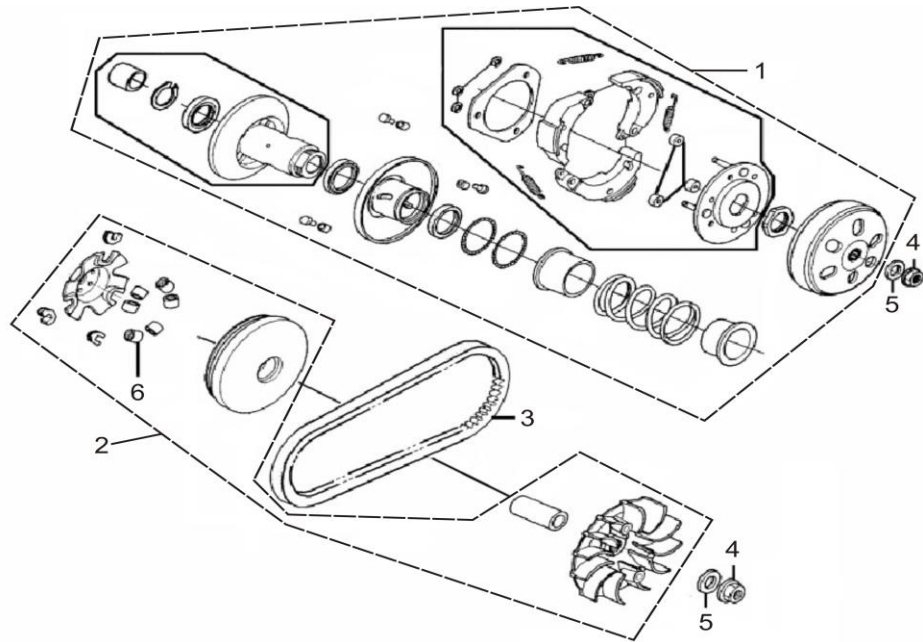
REAR GEAR BOX

NO.	PART CODE	DESCRIPTION	QTY	Unit
1	152QMI-A-08-001	GEARBOX COVER	1	pc
2	152QMI-A-08-002	VENT PIPE,GEARBOX	1	pc
3	152QMI-A-08-003	LOCATING DEWEL 8*14	2	pc
4	152QMI-A-08-004	BEARING 6204	1	pc
5	152QMI-A-08-005	BEARING 6202	1	pc
6	152QMI-A-08-006	BEARING 6203	1	pc
7	152QMI-A-08-007	FINAL GEAR	1	pc

8	152QMI-A-08-008	FINAL SHAFT(LONG)	1	pc
9	152QMI-A-08-009	COUNTERSHAFT	1	pc
10	152QMI-A-08-010	DRIVE SHAFT	1	pc
11	152QMI-A-08-011	OIL SEAL 20*32*6	1	pc
12	152QMI-A-08-012	FLANGE BOLT M8*12(CHROME)	2	pc
13	152QMI-A-08-013	GASKET 8(REDF)	2	pc
14	152QMI-A-08-014	FLANGE BOLT M6*28(CHROME)	1	pc
15	152QMI-A-08-015	FLANGE BOLT M6*35(CHROME)	1	pc
16	152QMI-A-08-016	FLANGE BOLT M6*35(WHITE)	2	pc
17	152QMI-A-08-017	FLANGE BOLT M6*28(WHITE)	2	pc
18	152QMI-A-08-018	GASKET,GEARBOX COVER	1	pc

30

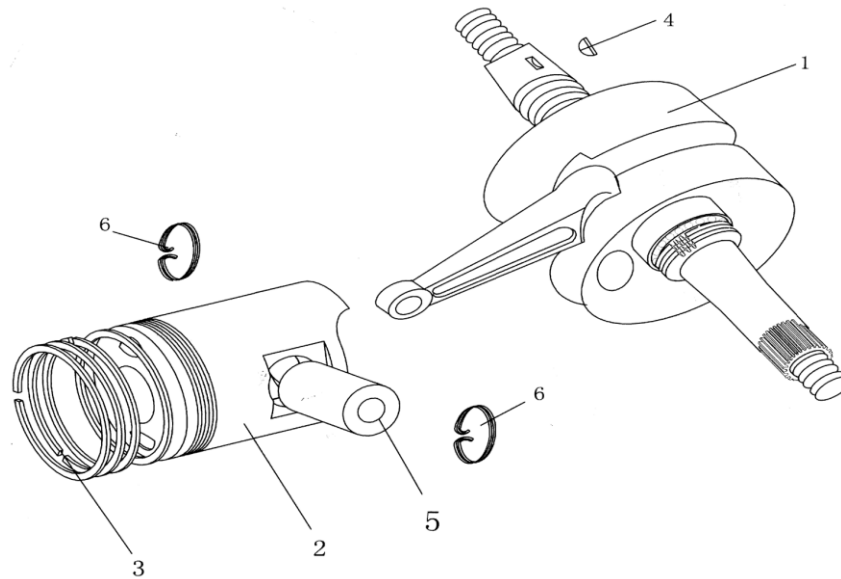
DRIVEN PULLEY



NO.	PART CODE	DESCRIPTION	QTY	Unit
1	152QMI-A-09-001	DRIVING WHEEL ASSY	1	set
2	152QMI-A-09-002	DRIVING DISK ASSY	1	set
3	152QMI-A-09-003	DRIVING BELT	1	pc
4	152QMI-A-09-004	FLANGE NUT 12	2	pc
5	152QMI-A-09-005	WASHER 12	2	pc
6	152QMI-A-09-006	ROLLER COMP WEIGHT	6	pc

31

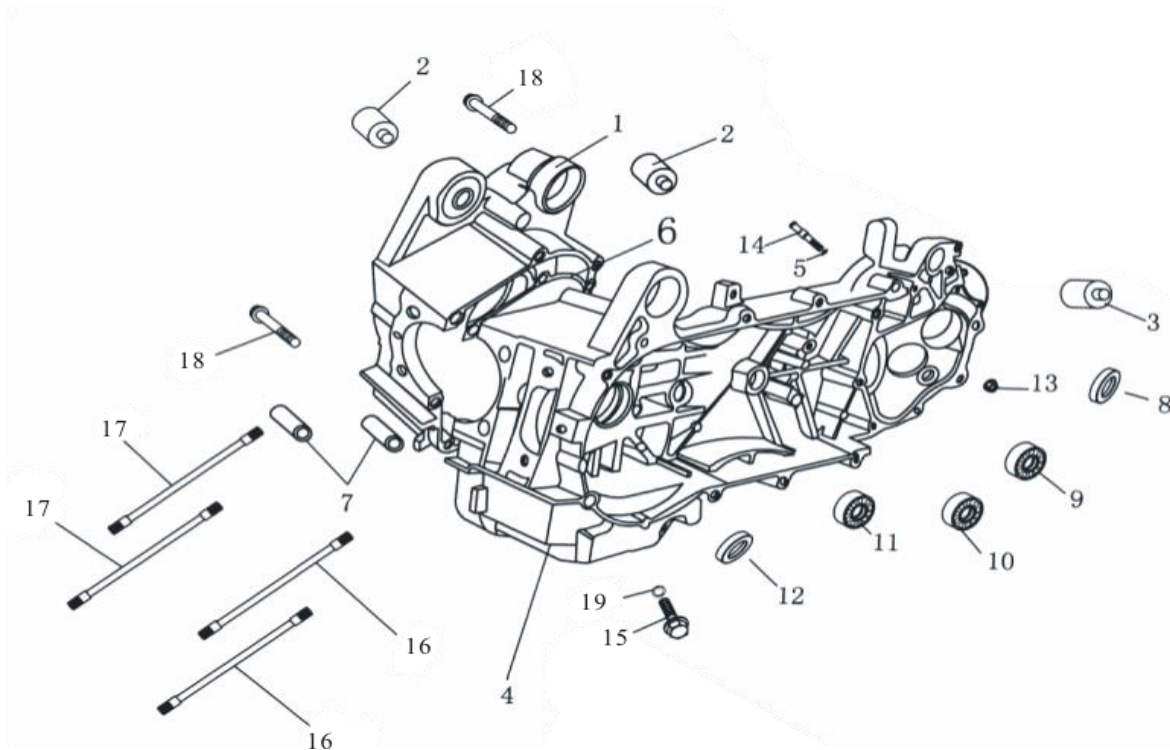
CRANKSHAFT & CONNECT ROD



NO.	PART CODE	DESCRIPTION	QTY	Unit
1	152QMI-A-10-001	CRANKSHAFT&CONNECT ROD ASSEMBLY	1	pc
2	152QMI-A-10-002	PISTON	1	pc
3	152QMI-A-10-003	PISTON RING COMP.	1	set
4	152QMI-A-10-004	WOODRUFF KEY	2	pc
5	152QMI-A-10-005	PISTON PIN	1	pc
6	152QMI-A-10-006	CLOSING RING,PISTON PIN	2	pc

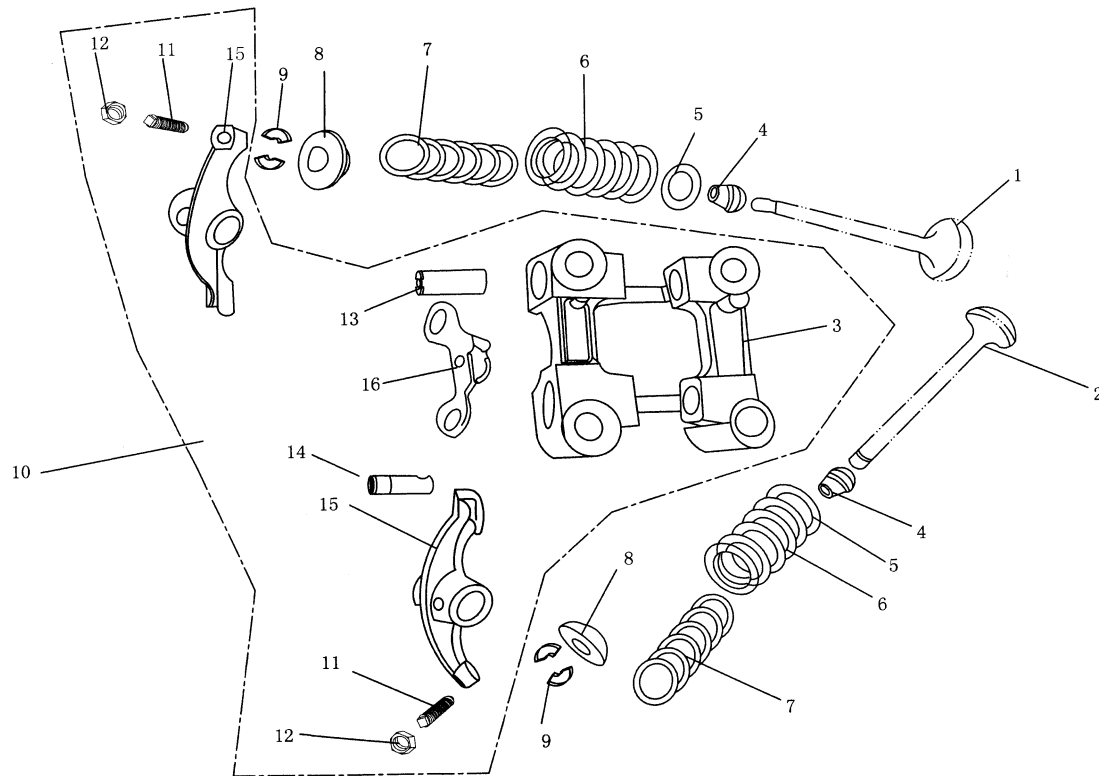
32

CRANKCASE



NO.	PART CODE	DESCRIPTION	QTY	Unit
1	152QMI-A-11-001	R.CRANKCASE BODY	1	pc
2	152QMI-A-11-002	BUSH,ENGINE HANGER	2	pc
3	152QMI-A-11-003	BUSH,LOWER SHOCK ABSORBER,RR	1	pc
4	152QMI-A-11-004	L.CARKCASE BODY(LONGER)	1	pc
5	152QMI-A-11-005	O-RING 7.5*1.5	1	pc
6	152QMI-A-11-006	GASKET,CRANKCASE	1	pc
7	152QMI-A-11-007	LOCATING DEWEL 8*14	2	pc
8	152QMI-A-11-008	OIL SEAL 27*42*7	1	pc
9	152QMI-A-11-009	BEARING 6004	1	pc
10	152QMI-A-11-010	BEARING 6301	1	pc
11	152QMI-A-11-011	BEARING 6002	1	pc
12	152QMI-A-11-012	OIL SEAL 19.8*30*5	1	pc
13	152QMI-A-11-013	LOCKNUT M8	1	pc
14	152QMI-A-11-014	LOCATING DEWEL BRAKE BLOCK	1	pc
15	152QMI-A-11-015	OIL DRAIN BOLT(CHROE)	1	pc
16	152QMI-A-11-016	STUD BOLT M8*195.5(COLOR)	2	pc
17	152QMI-A-11-017	STUD BOLT M8*187.5(COLOR)	2	pc
18	152QMI-A-11-018	FLANGE BOLT M6*50(WHITE)	2	pc
19	152QMI-A-11-019	WASHER 12	1	pc

AIR MACHINE

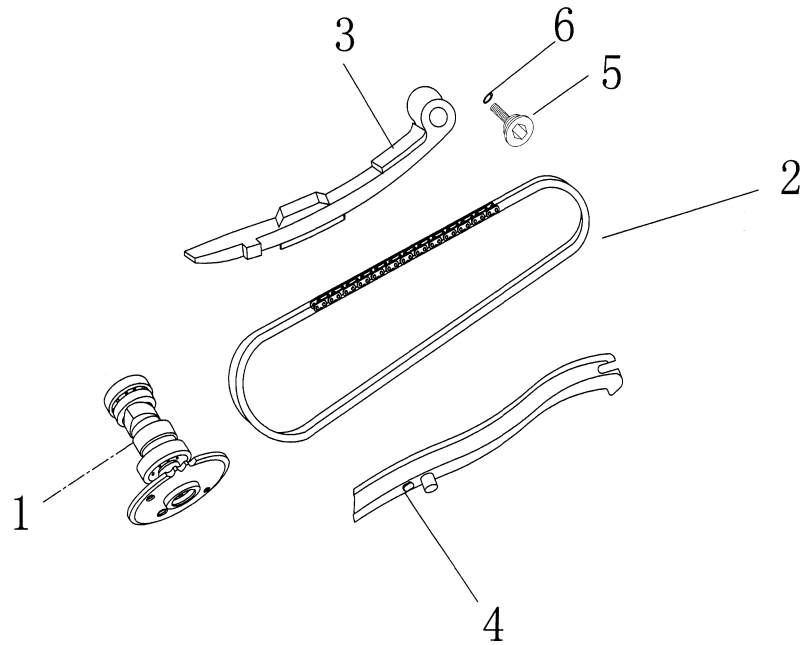


NO.	PART CODE	DESCRIPTION	QTY	Unit
1	152QMI-A-12-001	INLET VALVE	1	pc
2	152QMI-A-12-002	EXHAUSE VALVE	1	pc
3	152QMI-A-12-003	HOLDER OF ROCKER	1	pc
4	152QMI-A-12-004	VALVE OIL SEAL	2	pc
5	152QMI-A-12-005	VALVE SPRING SEAT	2	pc
6	152QMI-A-12-006	VALVE OUTER SPRING	2	pc

7	152QMI-A-12-007	VALVE INNER SPRING	2	pc
8	152QMI-A-12-008	VALVE SPRING TRAY	2	pc
9	152QMI-A-12-009	VALVE LOCK CLAMP	4	pc
10	152QMI-A-12-010	VALVE ROCKER SEAT ASSY.	2	pc
11	152QMI-A-12-011	ADJUSTING SCREW, VALVE	2	pc
12	152QMI-A-12-012	ADJUSTING LOCKNUT, VALVE	2	pc
13	152QMI-A-12-013	ROCKER SHAFT, EXHAUST VALVE	1	pc
14	152QMI-A-12-014	ROCKER SHAFT, INLET VALVE	1	pc
15	152QMI-A-12-015	ROCKER	2	pc
16	152QMI-A-12-016	DECOMPRESSION LOCK PLATE COMP.	1	pc

34

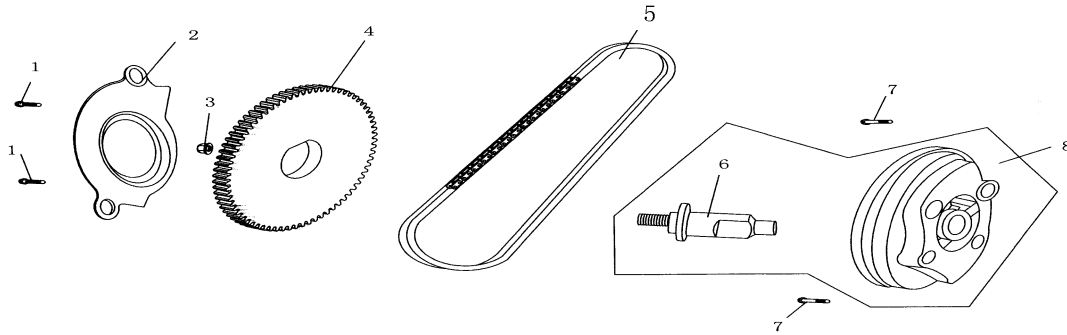
TIMING CHAIN, TENSIONER



NO.	PART CODE	DESCRIPTION	QTY	Unit
1	152QMI-A-13-001	CAM GEAR COMP.	1	pc
2	152QMI-A-13-002	TIMING CHAIN	1	pc
3	152QMI-A-13-003	CHAIN TENSION STUD	1	pc
4	152QMI-A-13-004	CHAIN GUIDED ROD	1	pc
5	152QMI-A-13-005	SCERW,CHAIN TENSION STUD(WITH O-RING)	1	pc
6	152QMI-A-13-006	O-SEAL 15*1.5	1	pc

35

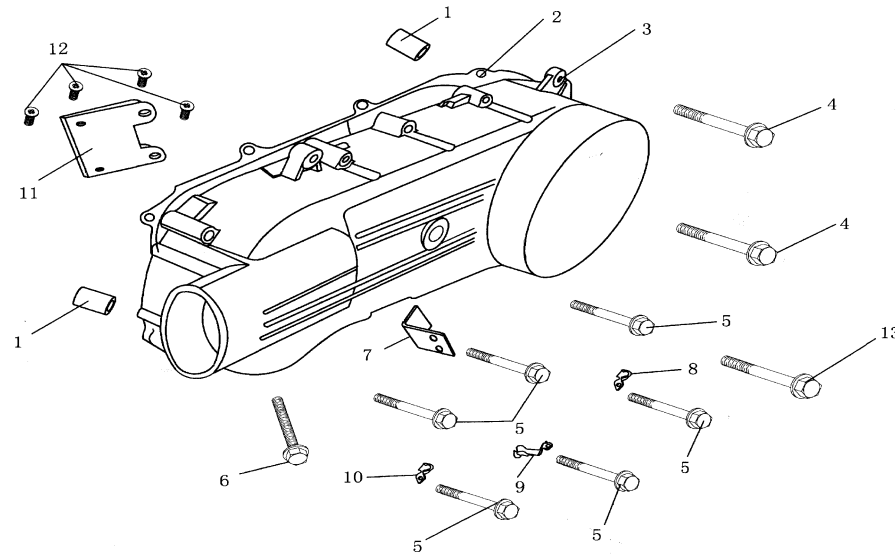
OIL PUMP



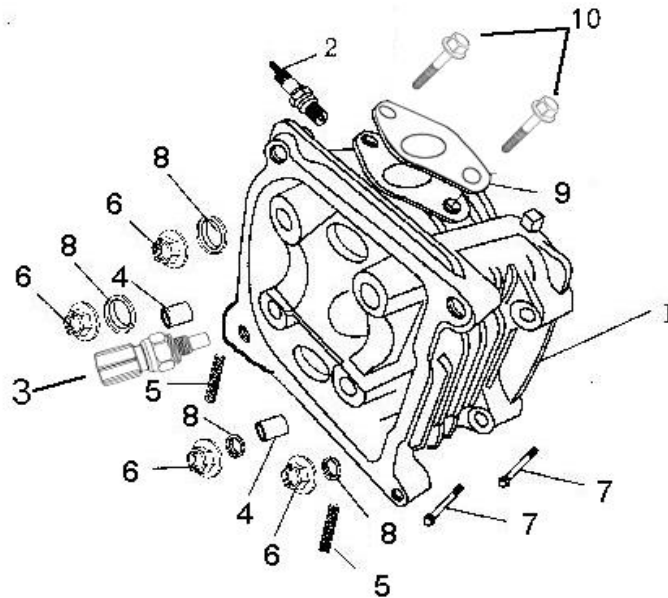
NO.	PART CODE	DESCRIPTION	QTY	Unit
1	152QMI-A-14-001	FLANGE BOLT M6*12	2	
2	152QMI-A-14-002	OIL DIVISION PLATE	1	
3	152QMI-A-14-003	FLANGE BOLT M6(WHITE)	1	
4	152QMI-A-14-004	DRIVING GEAR,OIL PUMP	1	
5	152QMI-A-14-005	DRIVING CHAIN,OIL PUMP	1	
6	152QMI-A-14-006	OIL PUMP SHAFT	1	
7	152QMI-A-14-007	FLANGE BOLT M6*25(WHITE)	2	
8	152QMI-A-14-008	OIL PUMP ASSY	1	

36

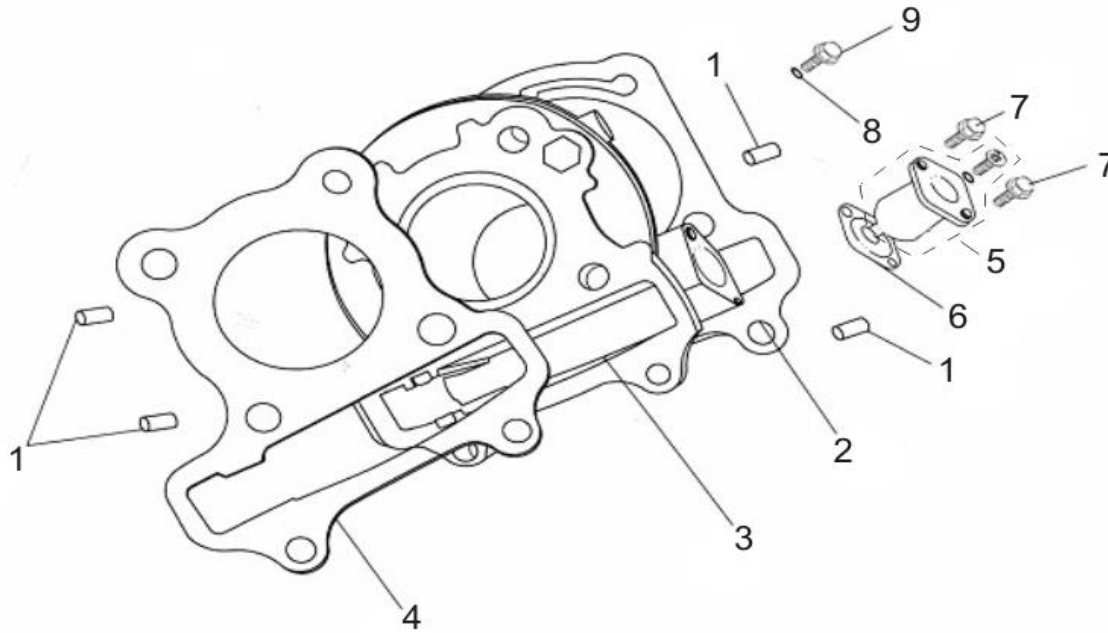
LEFT COVER



NO.	PART CODE		QTY	Unit
1	152QMI-A-15-001	LOCATING DEWEL 8*14	2	pc
2	152QMI-A-15-002	GASKET,L.CRANKCASE	1	pc
3	152QMI-A-15-003	L.CRANKCASE COVER(BLACK)	1	pc
4	152QMI-A-15-004	FLANGE BOLT M6*65(CHROME)	2	pc
5	152QMI-A-15-005	FLANGE BOLT M6*40(CHROME)	7	pc
6	152QMI-A-15-006	FLANGE BOLT M6*12	1	pc
7	152QMI-A-15-007	MAIN STAND PLATE	1	pc
8	152QMI-A-15-008	BRAKE CABLE CLAMP	1	pc
9	152QMI-A-15-009	THROTTLE CABLE CLAMP	1	pc
10	152QMI-A-15-010	CLAMP	1	pc
11	152QMI-A-15-011	VENT GUIDE BOARD	1	pc
12	152QMI-A-15-012	TAPPING SCREW M4*8(COLOR)	4	pc

CYLINDER HEAD

NO.	PART CODE	DESCRIPTION	QTY	Unit
1	152QMI-A-16-001	CYLINDER HEAD COMP.	1	pc
2	152QMI-A-16-002	SPARK PLUG	1	pc
3	152QMI-A-16-003	CYLINDER HEAD TEMPERATURE SENSOR	1	pc
4	152QMI-A-16-004	LOCATING DEWEL 10*16	2	pc
5	152QMI-A-16-005	STUD BOLT M6*32	2	pc
6	152QMI-A-16-006	FLANGE BOLT M8	4	pc
7	152QMI-A-16-007	FLANGE BOLT M6*100	2	pc
8	152QMI-A-16-008	WASHER 8(COLOR)	4	pc
9	152QMI-A-16-009	SHIM,INSULATING BOARD	1	pc
10	152QMI-A-16-010	FLANGE BOLT M6*45	2	pc

CYLINDER

NO.	PART CODE	DESCRIPTION	QTY	Unit
1	152QMI-A-17-001	LOCATING DEWEL 10*16	4	pc
2	152QMI-A-17-002	GASKET,CYLINDER	1	pc
3	152QMI-A-17-003	CYLINDER BODY	1	pc
4	152QMI-A-17-004	GASKET,CYLINDER HEAD	1	pc
5	152QMI-A-17-005	CHAIN ADJUSTOR ASSY	1	pc
6	152QMI-A-17-006	GASKET,CHAIN ADJUSTOR	1	pc
7	152QMI-A-17-007	FLANGE BOLT M6*25(CHROME)	2	pc
8	152QMI-A-17-008	GASKET 6	1	pc
9	152QMI-A-17-009	FLANGE BOLT M6*14(WHITE)	1	pc